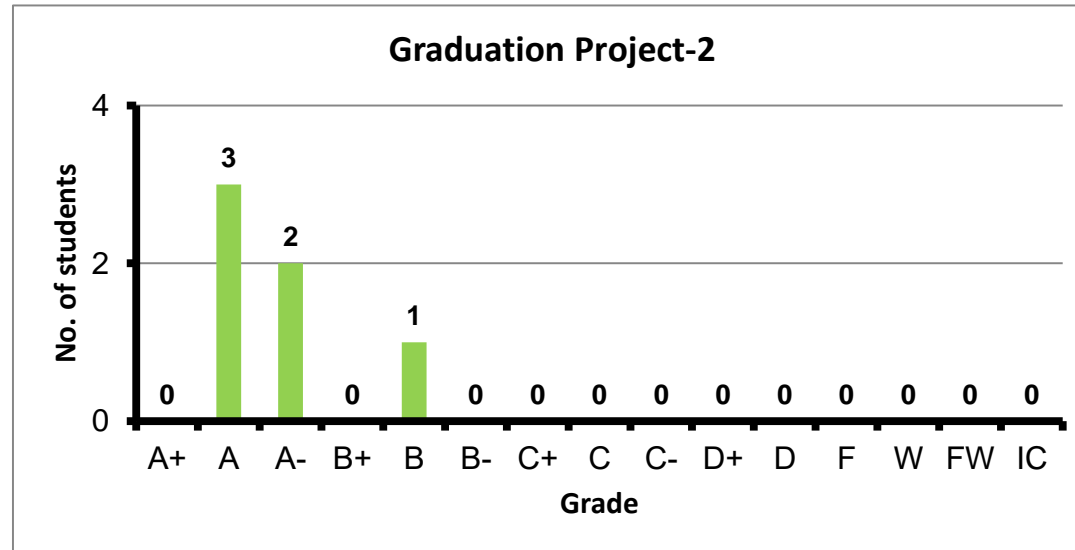
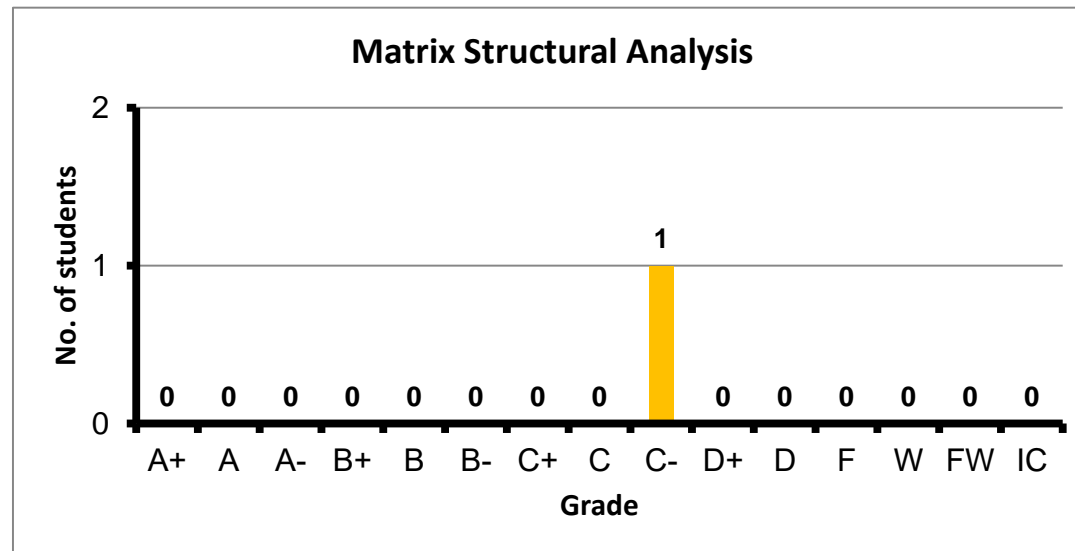


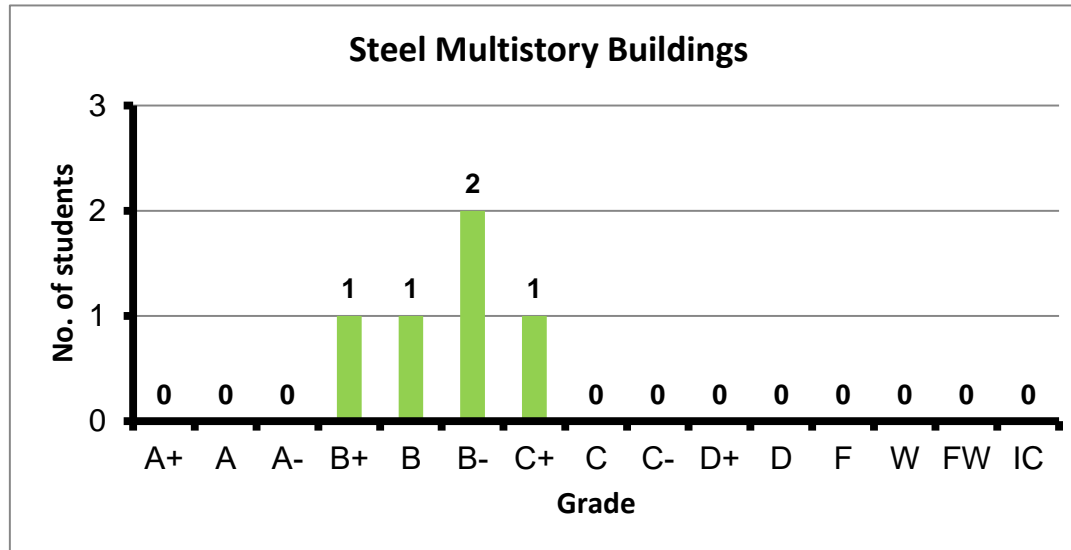
Course: Graduation Project-2  
 Programs: STE  
 Code: STES482  
 Student: 6  
 A+ to C: 100%  
 C- to D: 0%  
 F: 0  
 W: 0  
 Average: 3.73  
 Std Dev: 4.11



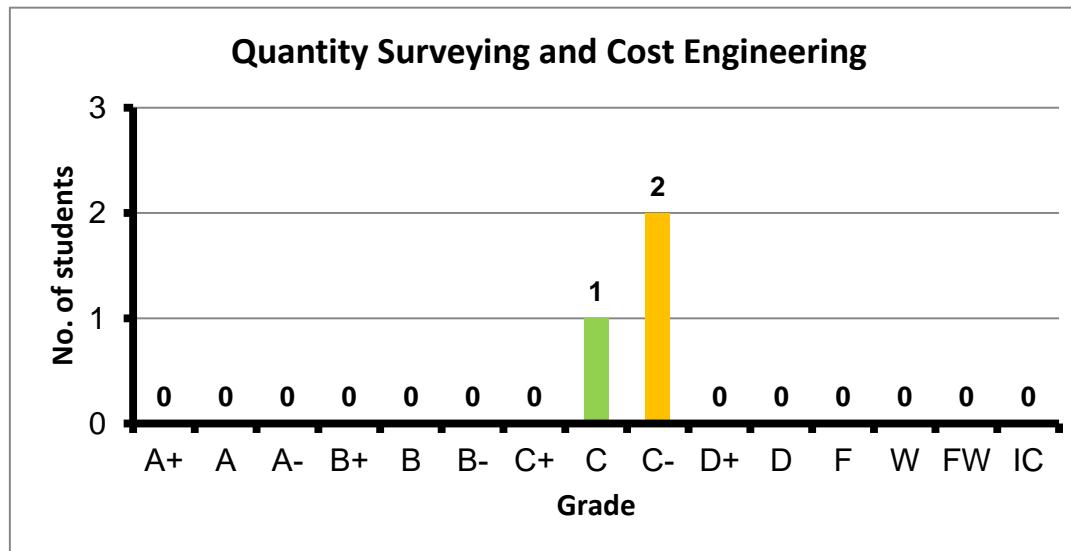
Course: Matrix Structural Analysis  
 Programs: STE  
 Code: STRS305  
 Student: 1  
 A+ to C: 0%  
 C- to D: 100%  
 F: 0  
 W: 0  
 Average: 1.70  
 Std Dev: #DIV/0!



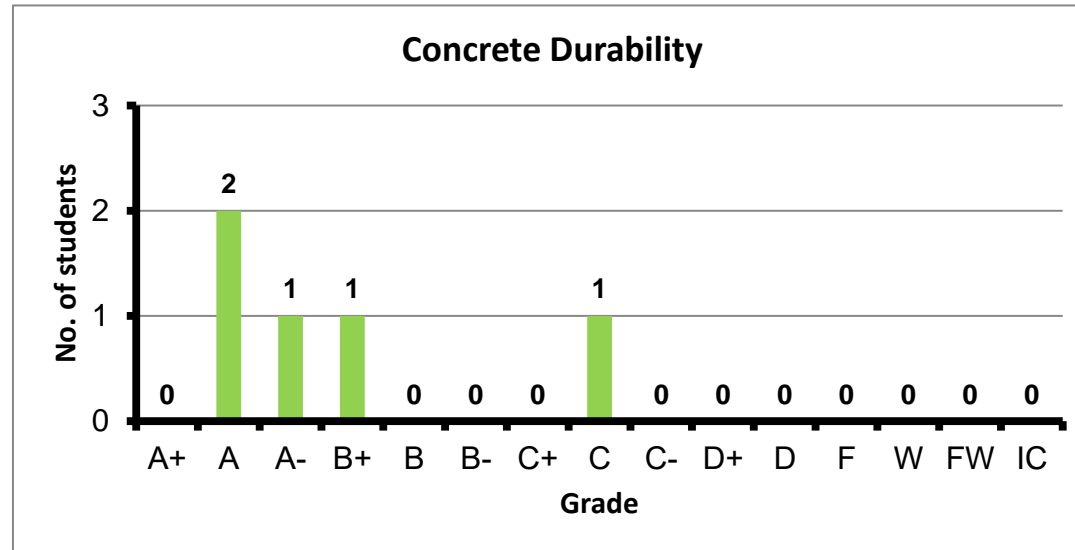
Course: Steel Multistory Buildings  
 Programs: STE  
 Code: STRS409  
 Student: 5  
 A+ to C: 100%  
 C- to D: 0%  
 F: 0  
 W: 0  
 Average: 2.80  
 Std Dev: 3.15



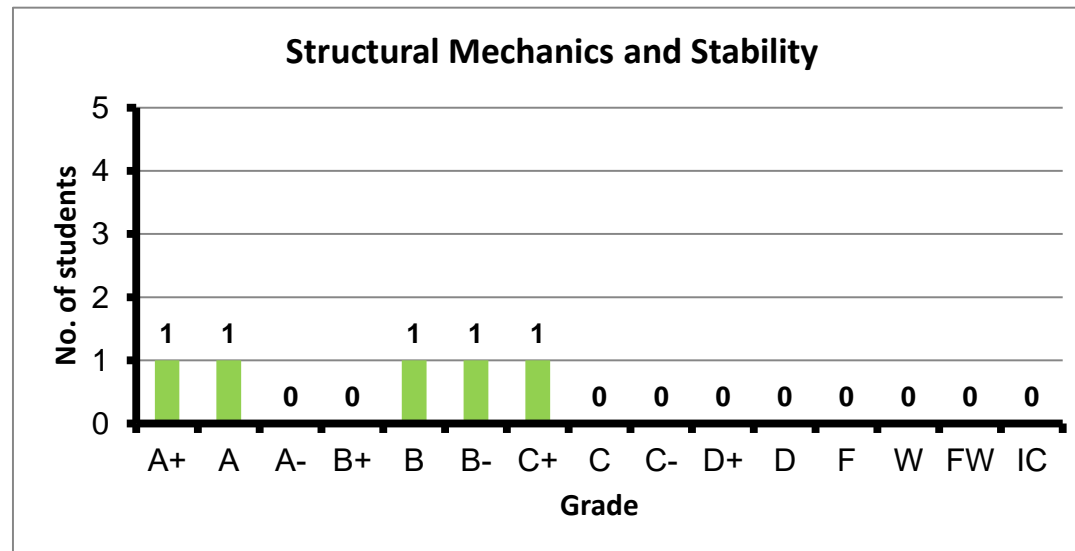
Course: Quantity Surveying and Cost Engineering  
 Programs: STE  
 Code: STRS419  
 Student: 3  
 A+ to C: 33%  
 C- to D: 67%  
 F: 0  
 W: 0  
 Average: 1.80  
 Std Dev: 2.21



Course: Concrete Durability  
 Programs: STE  
 Code: STRS431  
 Student: 5  
 A+ to C: 100%  
 C- to D: 0%  
 F: 0  
 W: 0  
 Average: 3.40  
 Std Dev: 3.89



Course: Structural Mechanics and Stability  
 Programs: STE  
 Code: STRS433  
 Student: 5  
 A+ to C: 100%  
 C- to D: 0%  
 F: 0  
 W: 0  
 Average: 3.20  
 Std Dev: 3.66



Course: Seismic Design of Structures  
Programs: STE  
Code: STRS437  
Student: 4  
A+ to C: 50%  
C- to D: 0%  
F: 2  
W: 0  
Average: 1.75  
Std Dev: 2.86

