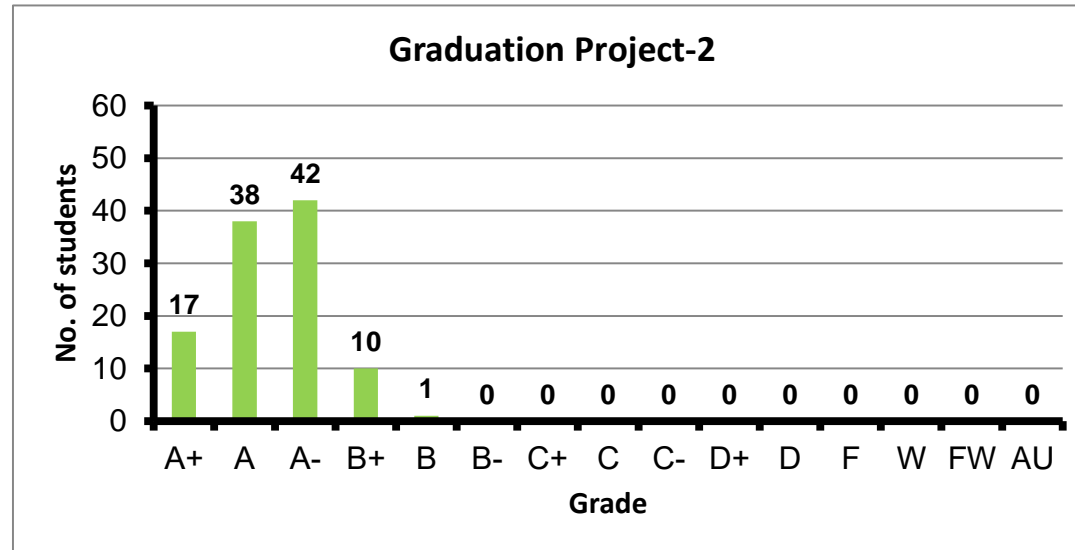
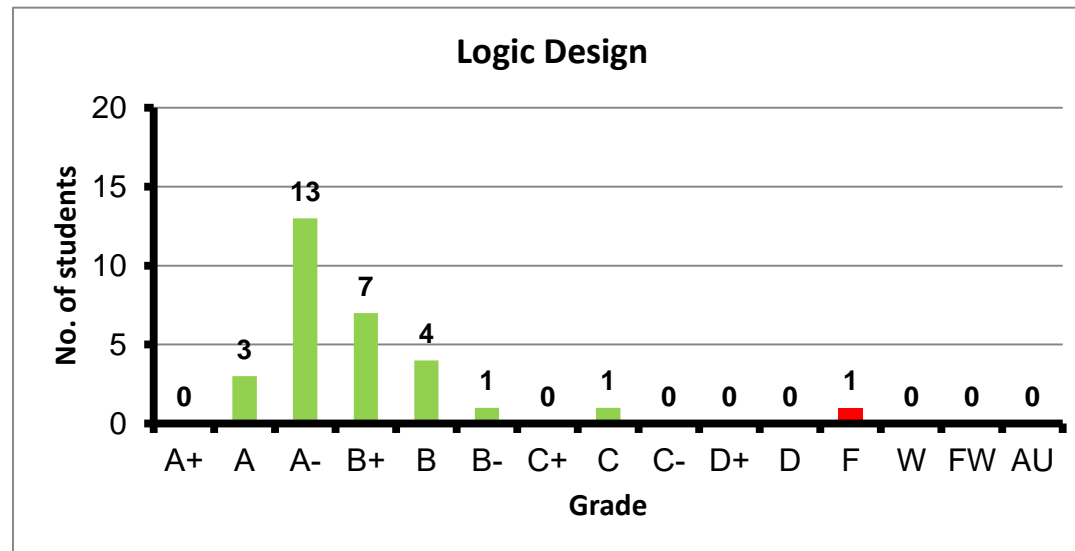


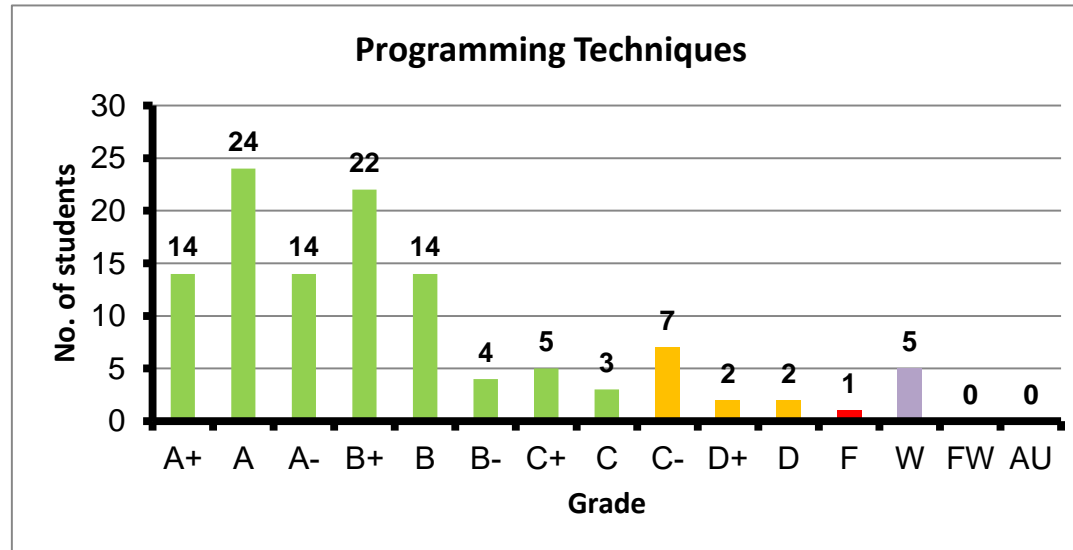
Course: Graduation Project-2
 Programs: CCE-C
 Code: CCES482
 Student: 108
 A+ to C: 100%
 C- to D: 0%
 F: 0
 W: 0
 Average: 3.81
 Std Dev: 3.83



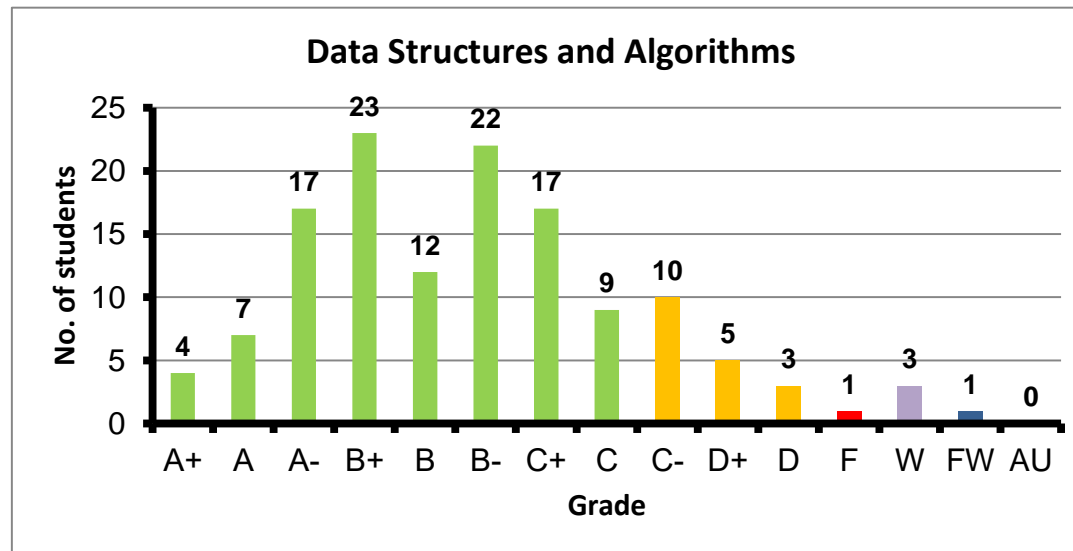
Course: Logic Design
 Programs: CCE-C
 Code: CMPS101
 Student: 30
 A+ to C: 97%
 C- to D: 0%
 F: 1
 W: 0
 Average: 3.33
 Std Dev: 3.47



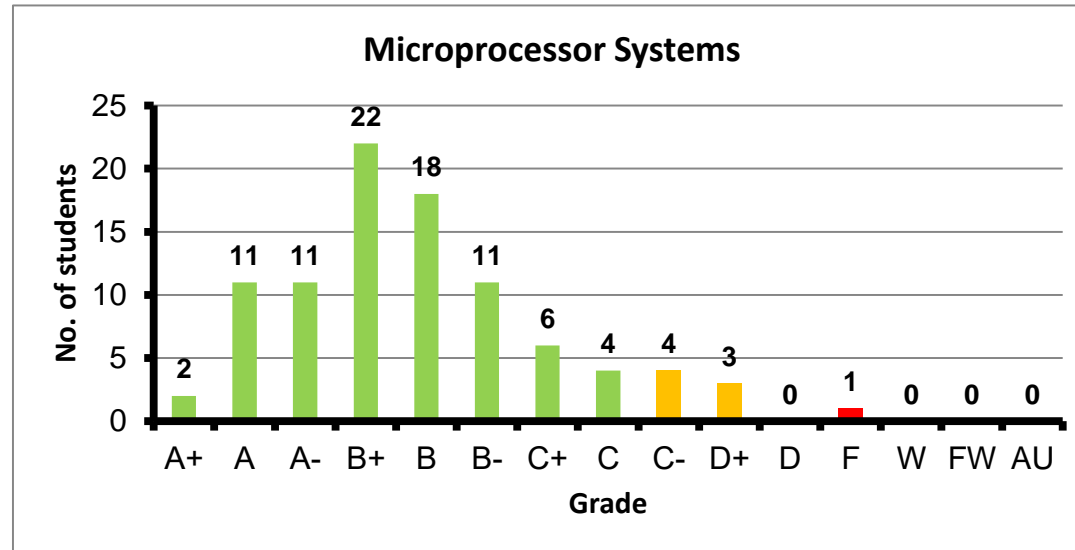
Course: Programming Techniques
 Programs: CCE-C
 Code: CMPS102
 Student: 117
 A+ to C: 85%
 C- to D: 9%
 F: 1
 W: 5
 Average: 3.24
 Std Dev: 3.33



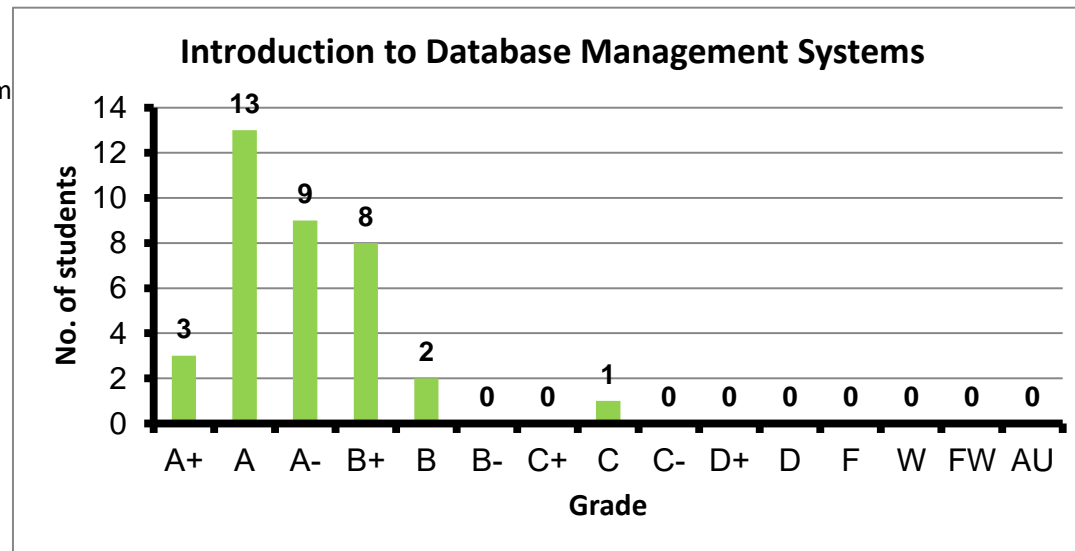
Course: Data Structures and Algorithms
 Programs: CCE-C
 Code: CMPS103
 Student: 134
 A+ to C: 83%
 C- to D: 13%
 F: 1
 W: 3
 Average: 2.79
 Std Dev: 2.89



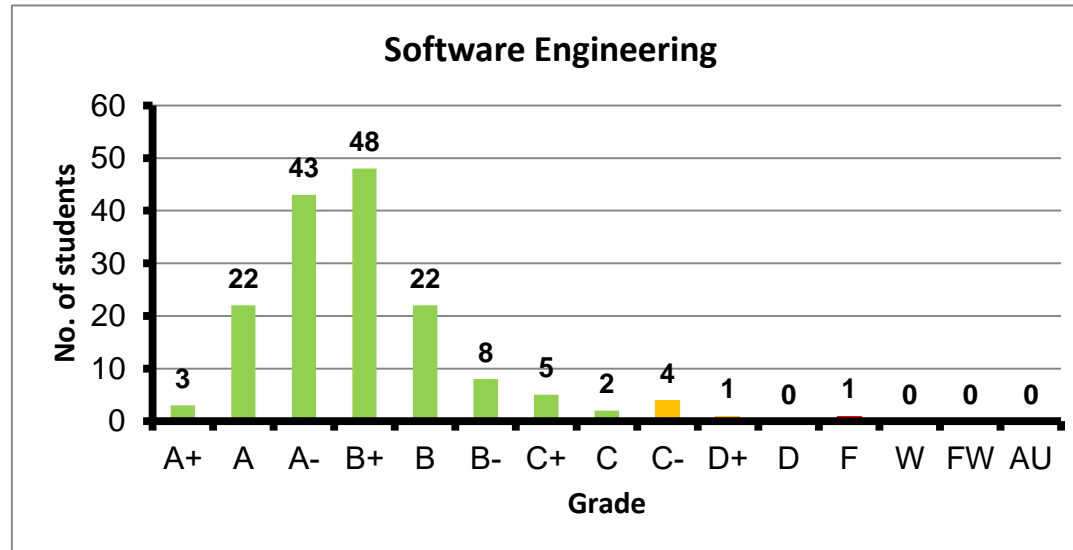
Course: Microprocessor Systems
 Programs: CCE-C
 Code: CMPS201
 Student: 93
 A+ to C: 91%
 C- to D: 8%
 F: 1
 W: 0
 Average: 3.03
 Std Dev: 3.14



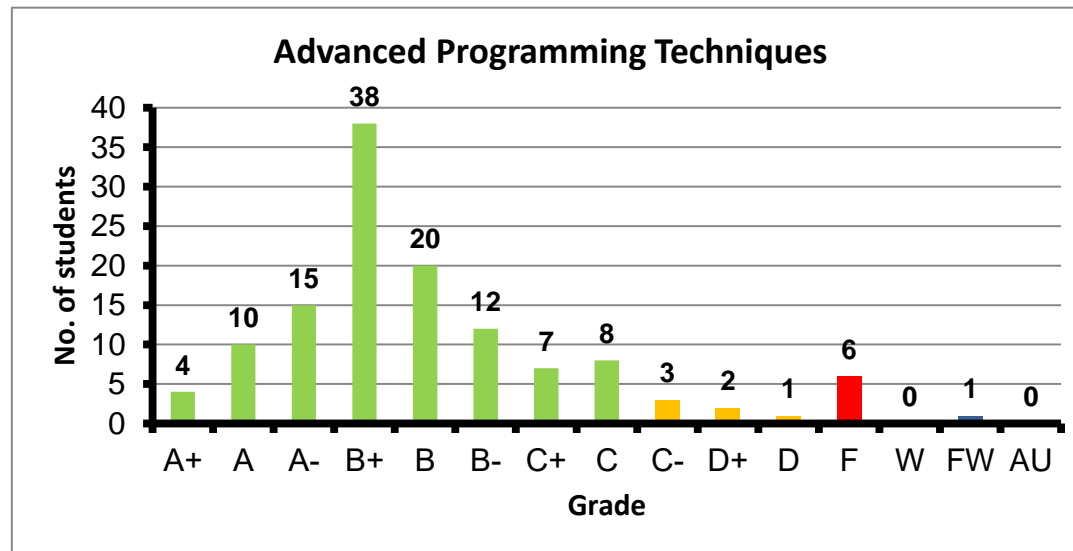
Course: Introduction to Database Management System
 Programs: CCE-C
 Code: CMPS202
 Student: 36
 A+ to C: 100%
 C- to D: 0%
 F: 0
 W: 0
 Average: 3.66
 Std Dev: 3.74



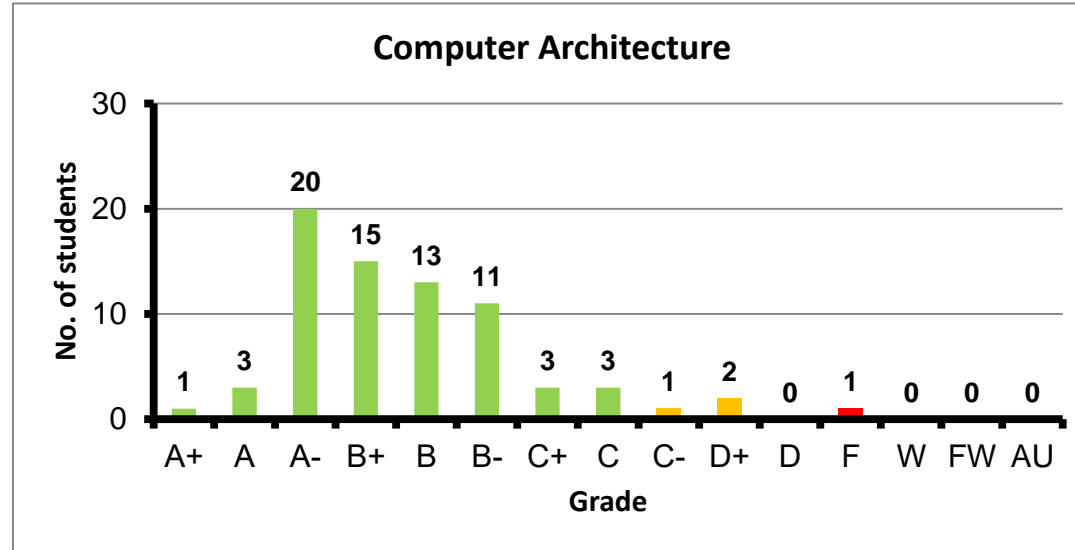
Course: Software Engineering
 Programs: CCE-C
 Code: CMPS203
 Student: 159
 A+ to C: 96%
 C- to D: 3%
 F: 1
 W: 0
 Average: 3.33
 Std Dev: 3.39



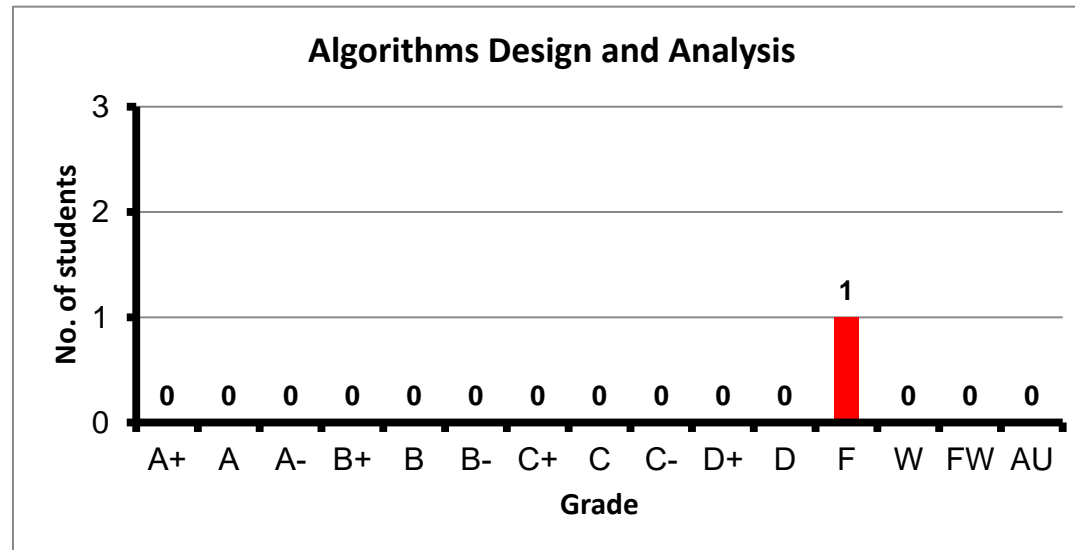
Course: Advanced Programming Techniques
 Programs: CCE-C
 Code: CMPS211
 Student: 127
 A+ to C: 90%
 C- to D: 5%
 F: 6
 W: 0
 Average: 2.94
 Std Dev: 3.09



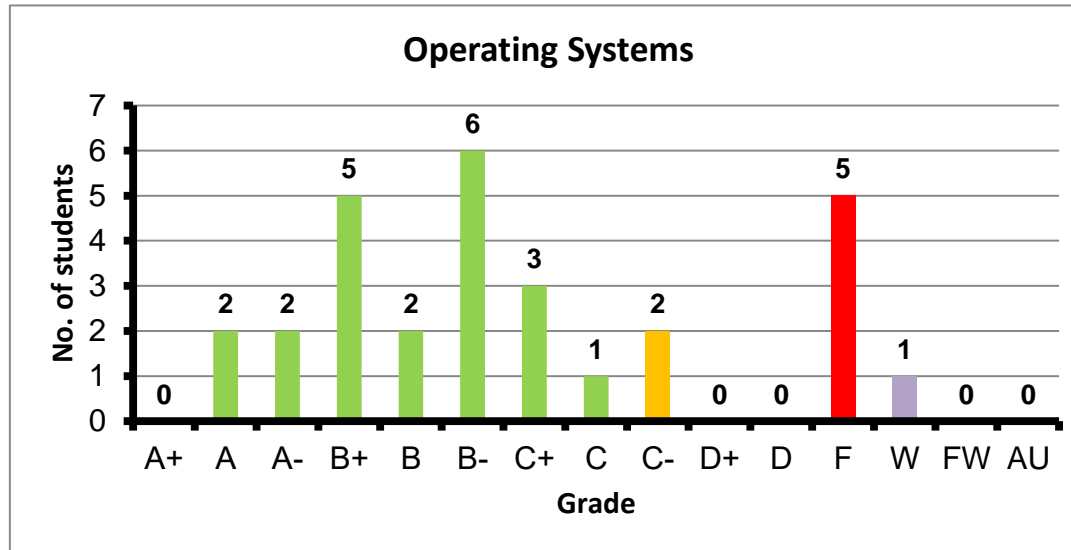
Course: Computer Architecture
 Programs: CCE-C
 Code: CMPS301
 Student: 73
 A+ to C: 95%
 C- to D: 4%
 F: 1
 W: 0
 Average: 3.09
 Std Dev: 3.19



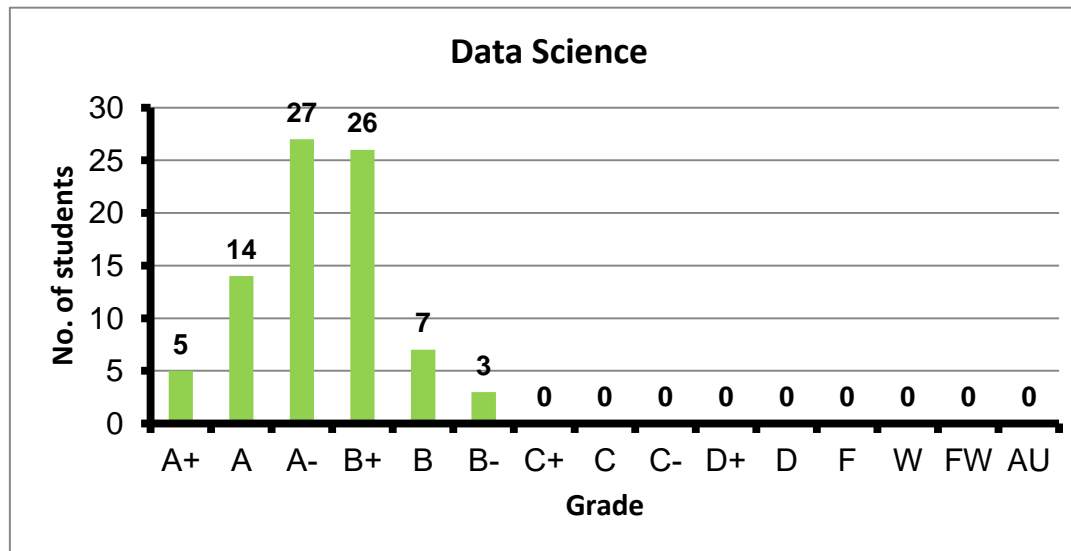
Course: Algorithms Design and Analysis
 Programs: CCE-C
 Code: CMPS302
 Student: 1
 A+ to C: 0%
 C- to D: 0%
 F: 1
 W: 0
 Average: 0.00
 Std Dev: #DIV/0!



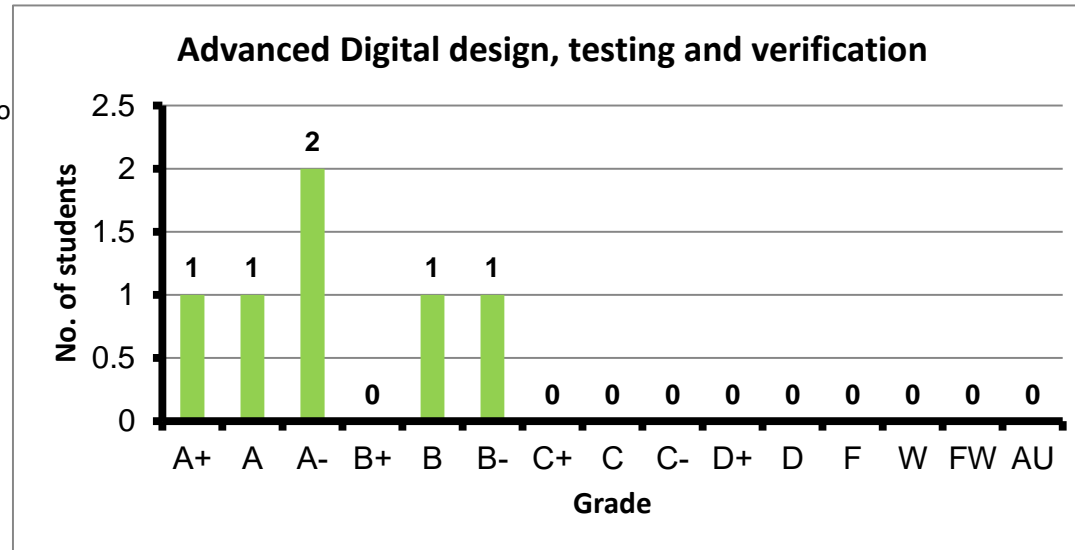
Course: Operating Systems
 Programs: CCE-C
 Code: CMPS303
 Student: 29
 A+ to C: 72%
 C- to D: 7%
 F: 5
 W: 1
 Average: 2.37
 Std Dev: 2.70



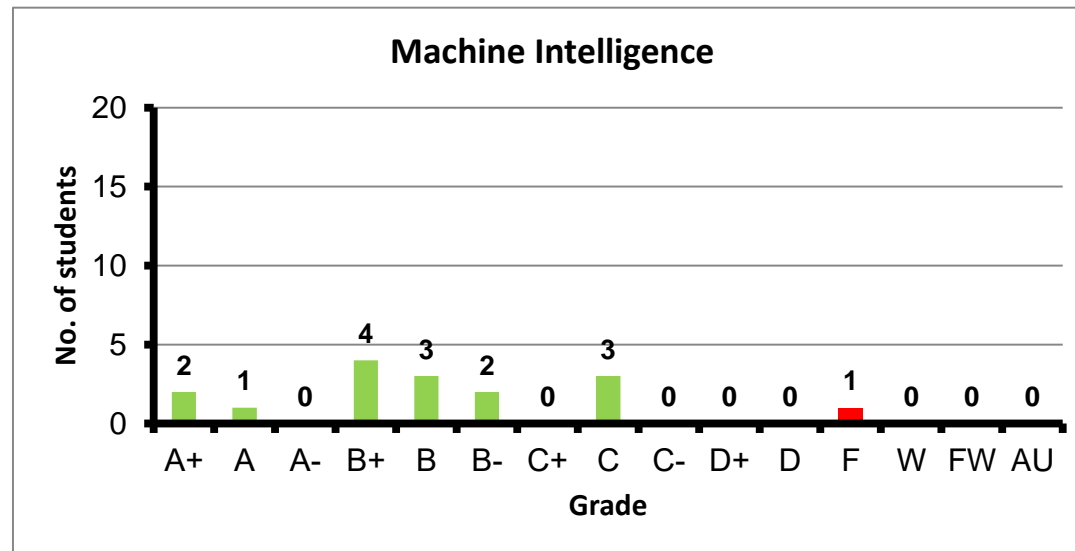
Course: Data Science
 Programs: CCE-C
 Code: CMPS344
 Student: 82
 A+ to C: 100%
 C- to D: 0%
 F: 0
 W: 0
 Average: 3.55
 Std Dev: 3.59



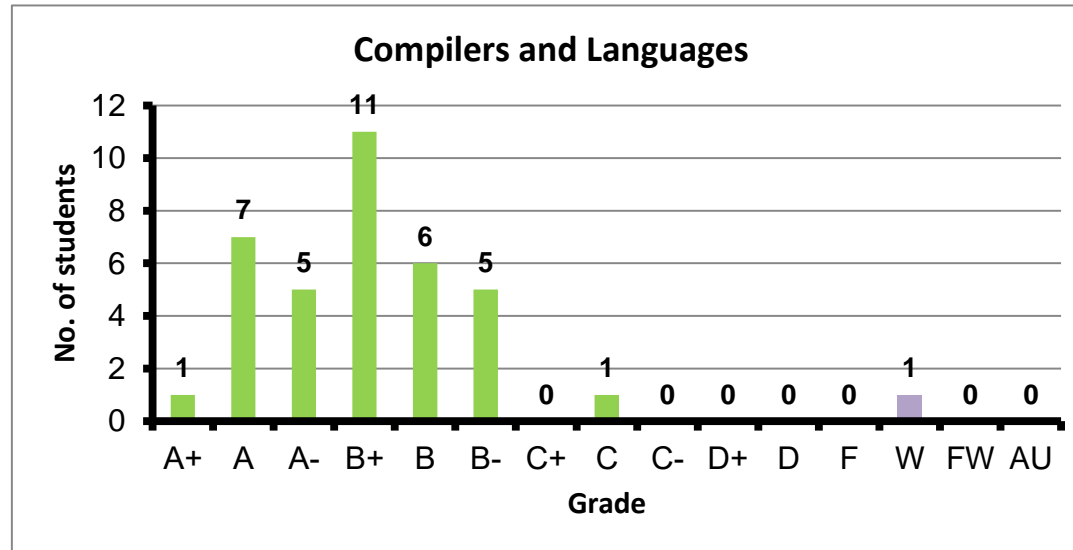
Course: Advanced Digital design, testing and verificatio
 Programs: CCE-C
 Code: CMPS345
 Student: 6
 A+ to C: 100%
 C- to D: 0%
 F: 0
 W: 0
 Average: 3.52
 Std Dev: 3.89



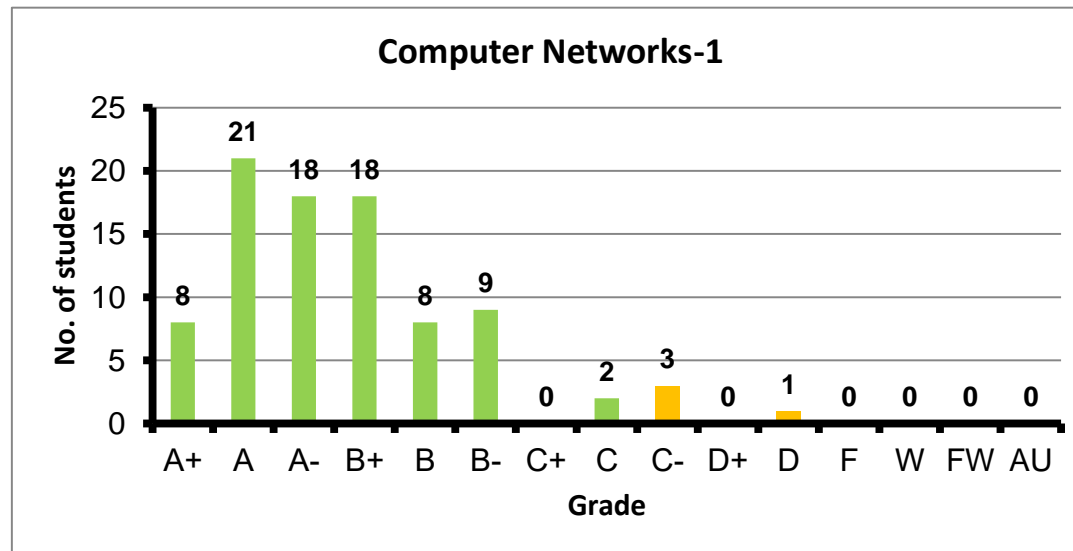
Course: Machine Intelligence
 Programs: CCE-C
 Code: CMPS402
 Student: 16
 A+ to C: 94%
 C- to D: 0%
 F: 1
 W: 0
 Average: 2.85
 Std Dev: 3.11



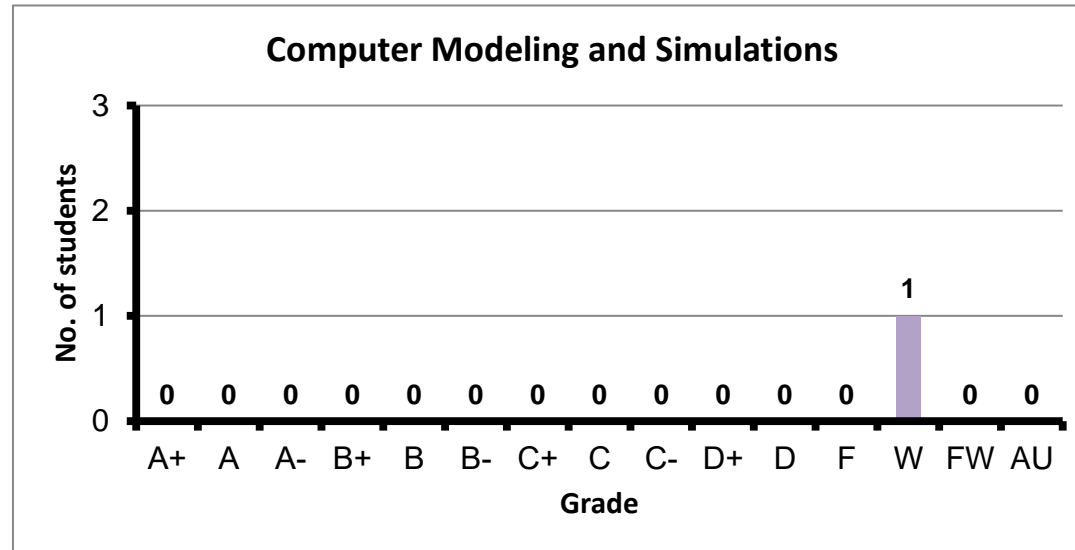
Course: Compilers and Languages
 Programs: CCE-C
 Code: CMPS403
 Student: 37
 A+ to C: 97%
 C- to D: 0%
 F: 0
 W: 1
 Average: 3.34
 Std Dev: 3.40



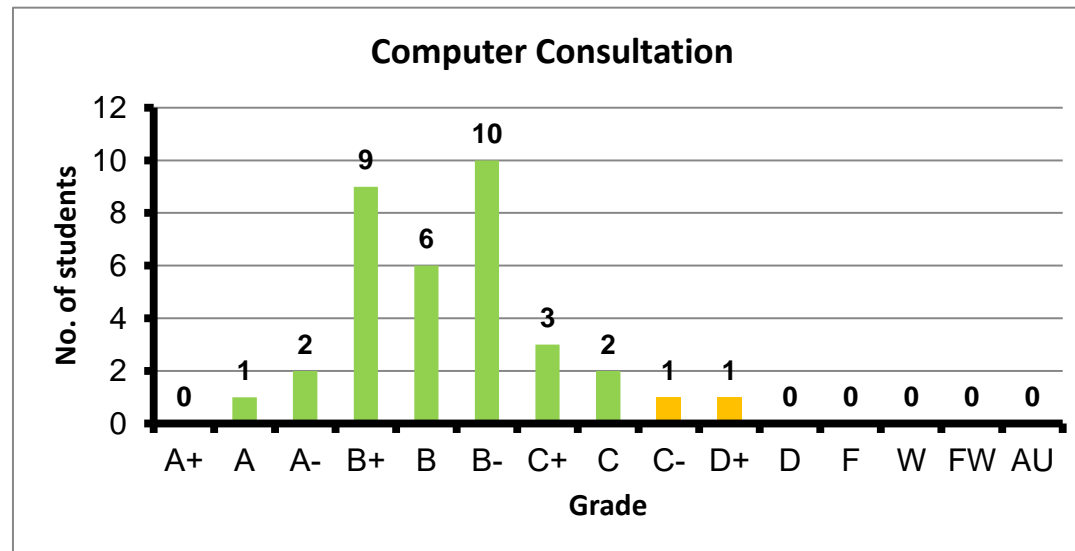
Course: Computer Networks-1
 Programs: CCE-C
 Code: CMPS405
 Student: 88
 A+ to C: 95%
 C- to D: 5%
 F: 0
 W: 0
 Average: 3.41
 Std Dev: 3.49



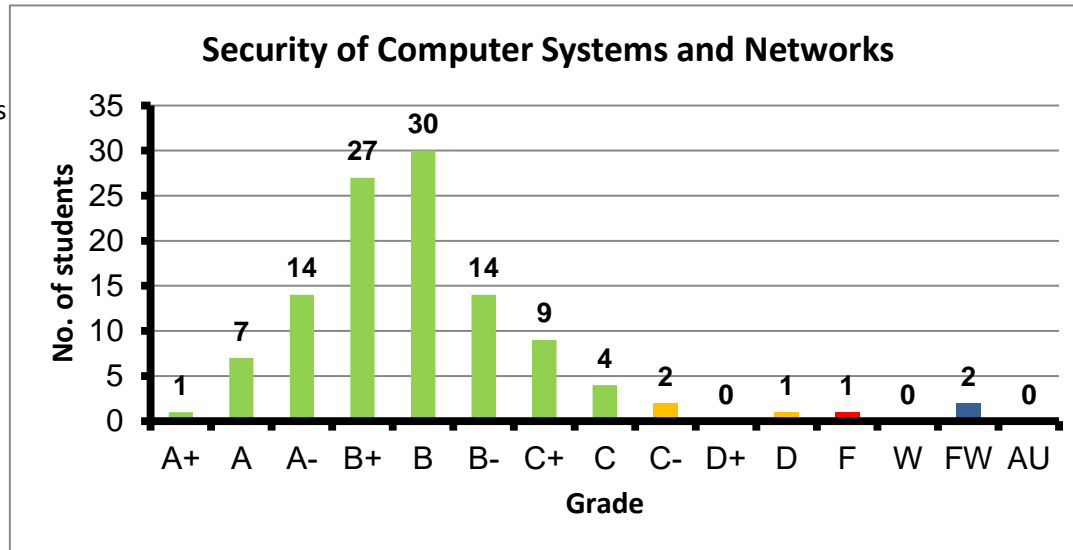
Course: Computer Modeling and Simulations
 Programs: CCE-C
 Code: CMPS407
 Student: 1
 A+ to C: 0%
 C- to D: 0%
 F: 0
 W: 1
 Average: #DIV/0!
 Std Dev: 0.00



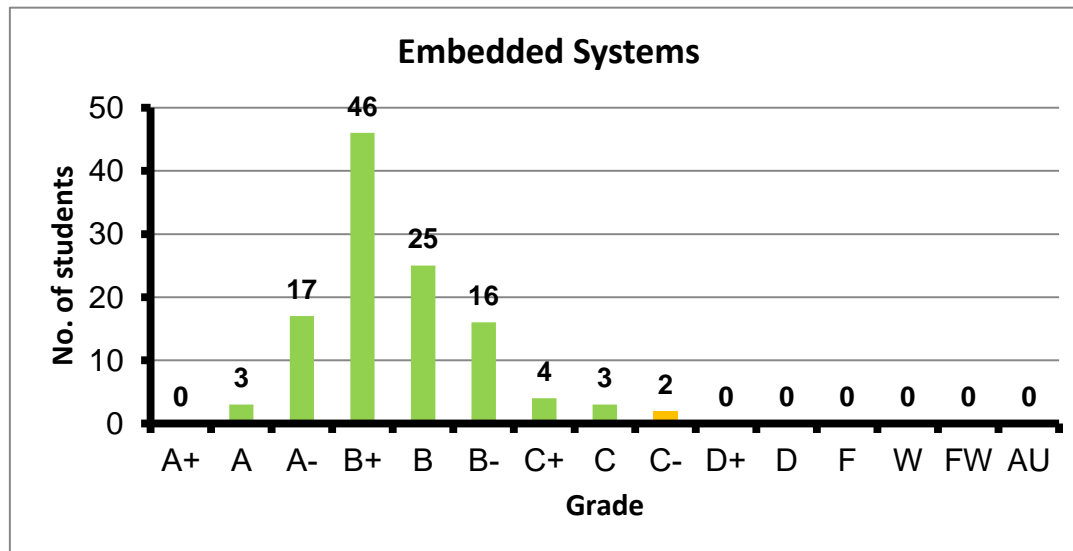
Course: Computer Consultation
 Programs: CCE-C
 Code: CMPS425
 Student: 35
 A+ to C: 94%
 C- to D: 6%
 F: 0
 W: 0
 Average: 2.86
 Std Dev: 2.95



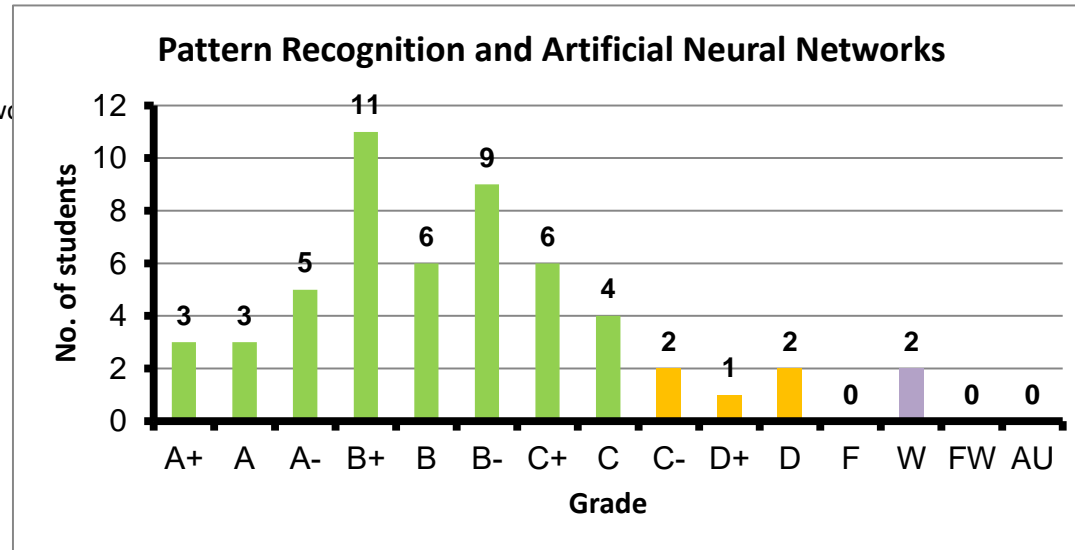
Course: Security of Computer Systems and Networks
 Programs: CCE-C
 Code: CMPS426
 Student: 112
 A+ to C: 95%
 C- to D: 3%
 F: 1
 W: 0
 Average: 3.03
 Std Dev: 3.11



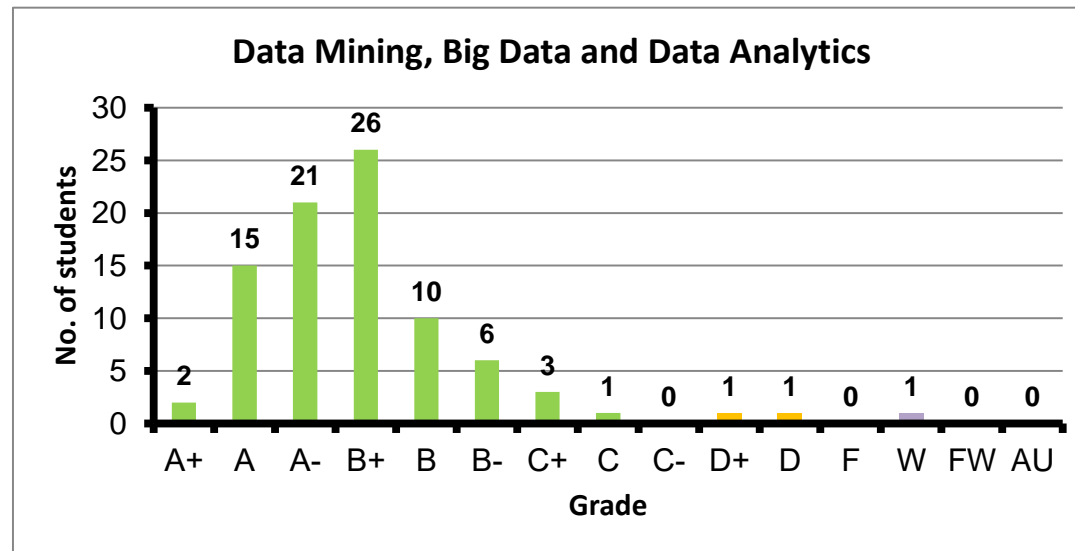
Course: Embedded Systems
 Programs: CCE-C
 Code: CMPS445
 Student: 116
 A+ to C: 98%
 C- to D: 2%
 F: 0
 W: 0
 Average: 3.13
 Std Dev: 3.18



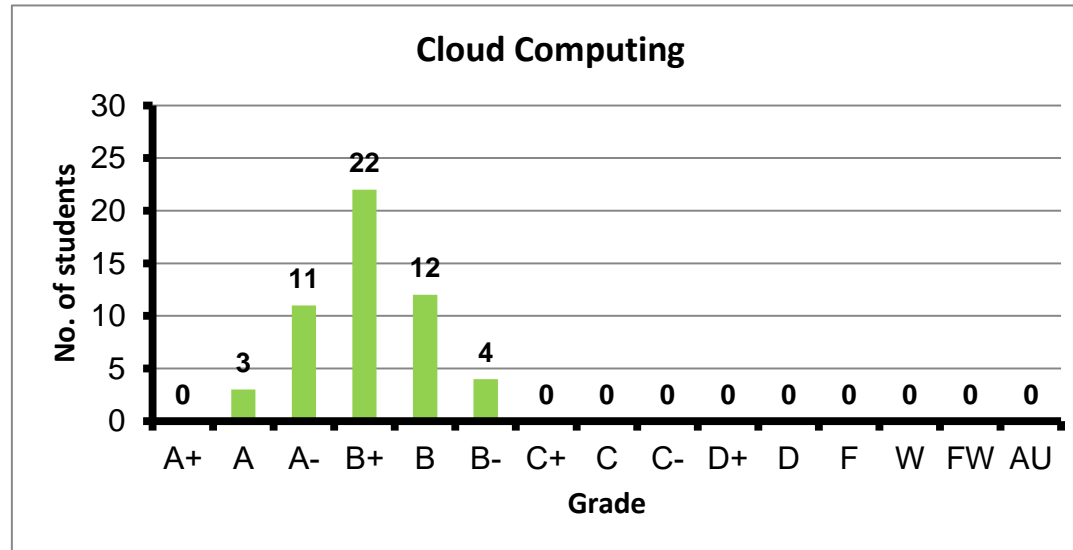
Course: Pattern Recognition and Artificial Neural Networks
 Programs: CCE-C
 Code: CMPS450
 Student: 54
 A+ to C: 87%
 C- to D: 9%
 F: 0
 W: 2
 Average: 2.88
 Std Dev: 2.97



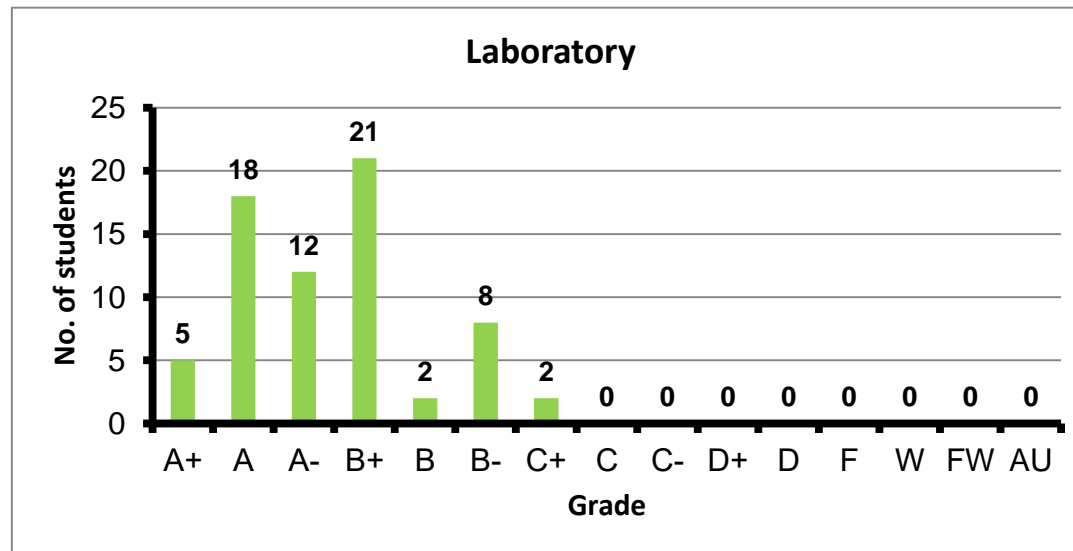
Course: Data Mining, Big Data and Data Analytics
 Programs: CCE-C
 Code: CMPS451
 Student: 87
 A+ to C: 97%
 C- to D: 2%
 F: 0
 W: 1
 Average: 3.36
 Std Dev: 3.42



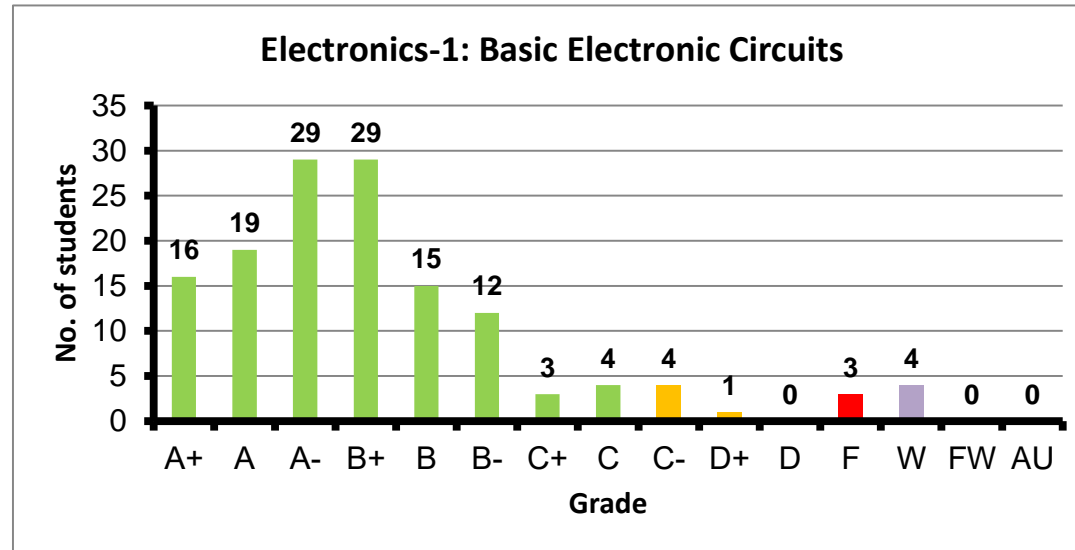
Course: Cloud Computing
 Programs: CCE-C
 Code: CMPS453
 Student: 52
 A+ to C: 100%
 C- to D: 0%
 F: 0
 W: 0
 Average: 3.31
 Std Dev: 3.36



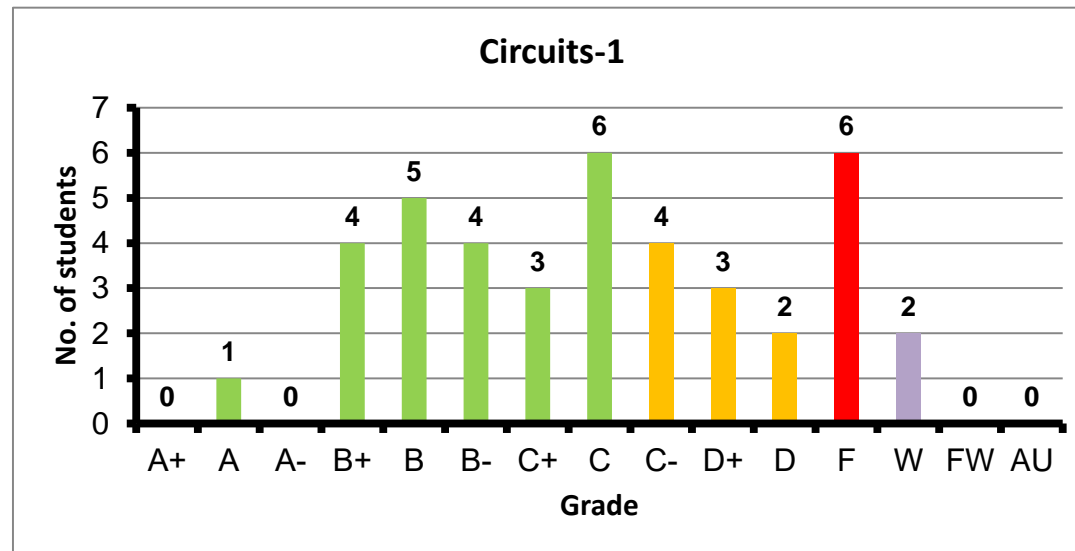
Course: Laboratory
 Programs: CCE-E
 Code: EECS100
 Student: 68
 A+ to C: 100%
 C- to D: 0%
 F: 0
 W: 0
 Average: 3.50
 Std Dev: 3.56



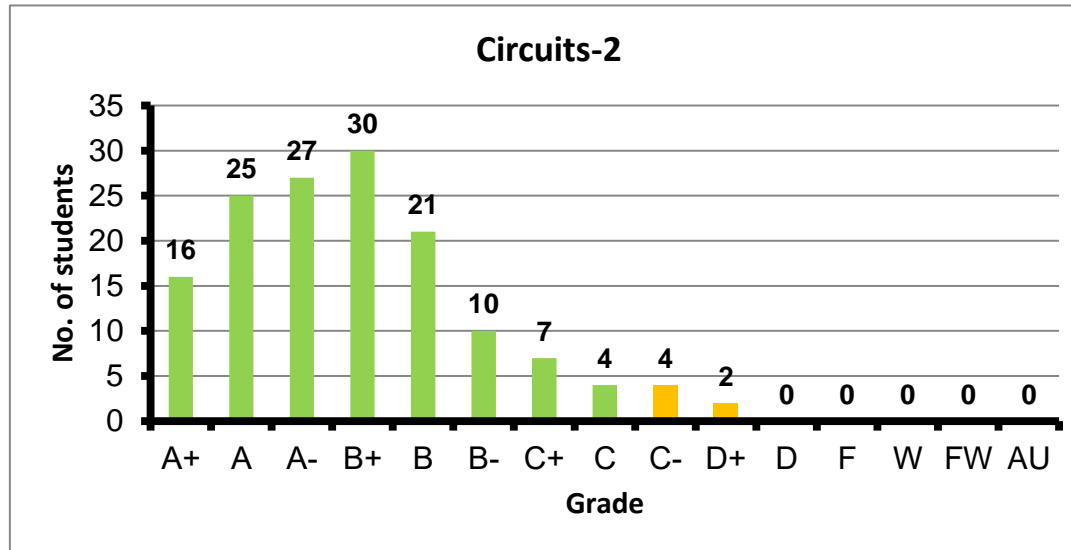
Course: Electronics-1: Basic Electronic Circuits
 Programs: CCE-E
 Code: EECS101
 Student: 139
 A+ to C: 91%
 C- to D: 4%
 F: 3
 W: 4
 Average: 3.29
 Std Dev: 3.36



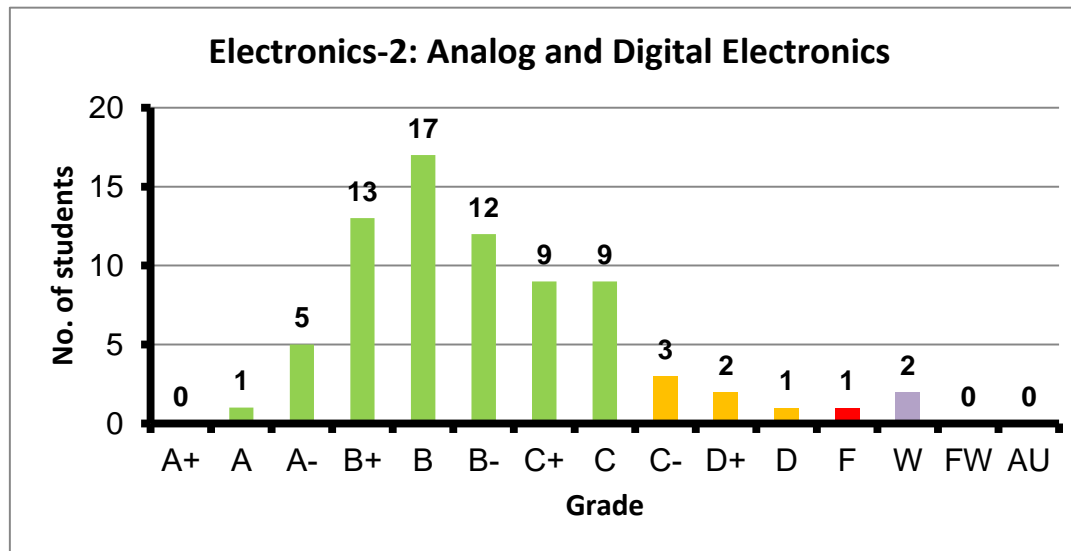
Course: Circuits-1
 Programs: CCE-E
 Code: EECS102
 Student: 40
 A+ to C: 58%
 C- to D: 23%
 F: 6
 W: 2
 Average: 1.97
 Std Dev: 2.24



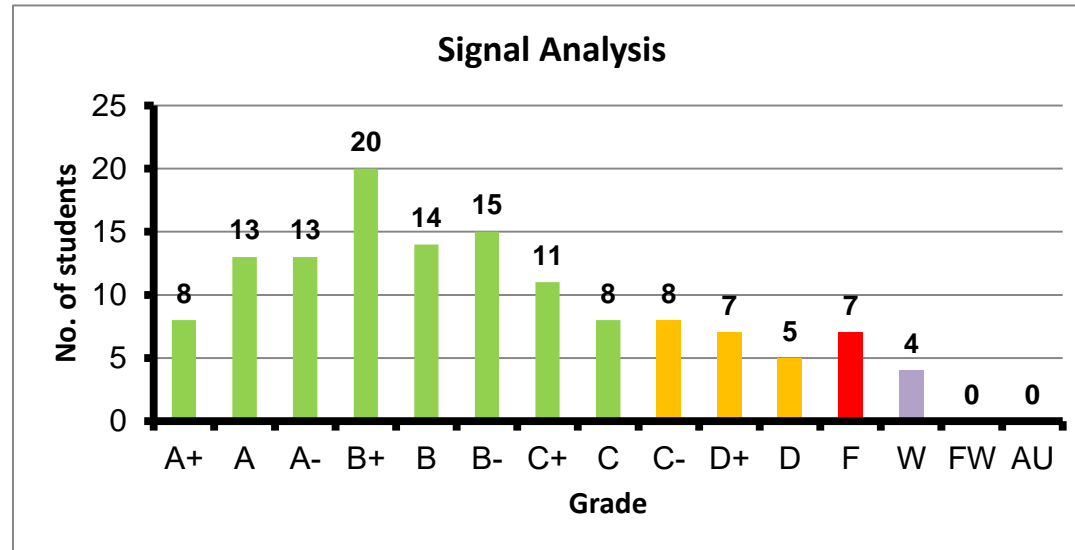
Course: Circuits-2
 Programs: CCE-E
 Code: EECS112
 Student: 146
 A+ to C: 96%
 C- to D: 4%
 F: 0
 W: 0
 Average: 3.33
 Std Dev: 3.41



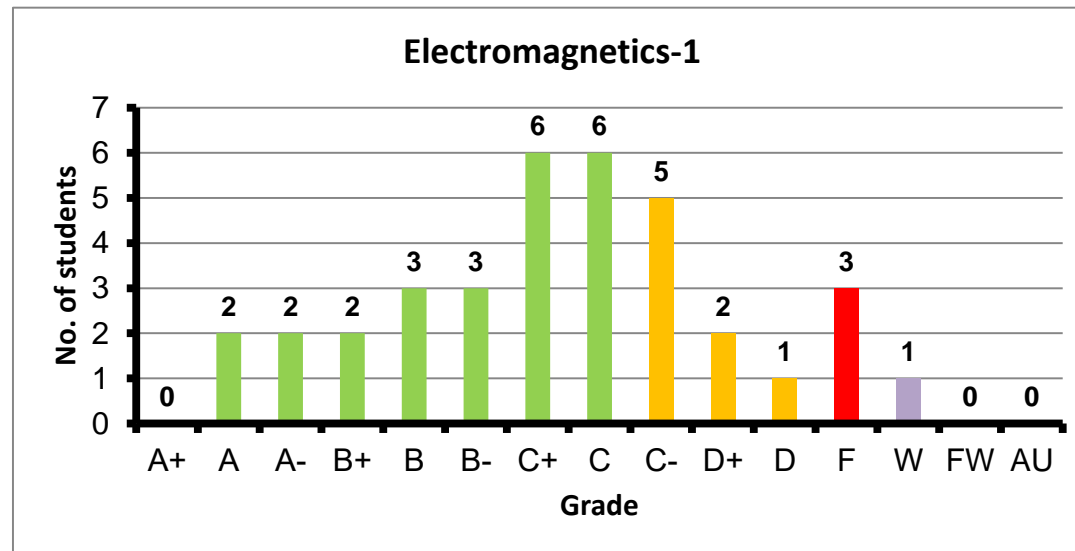
Course: Electronics-2: Analog and Digital Electronics
 Programs: CCE-E
 Code: EECS201
 Student: 75
 A+ to C: 88%
 C- to D: 8%
 F: 1
 W: 2
 Average: 2.69
 Std Dev: 2.77



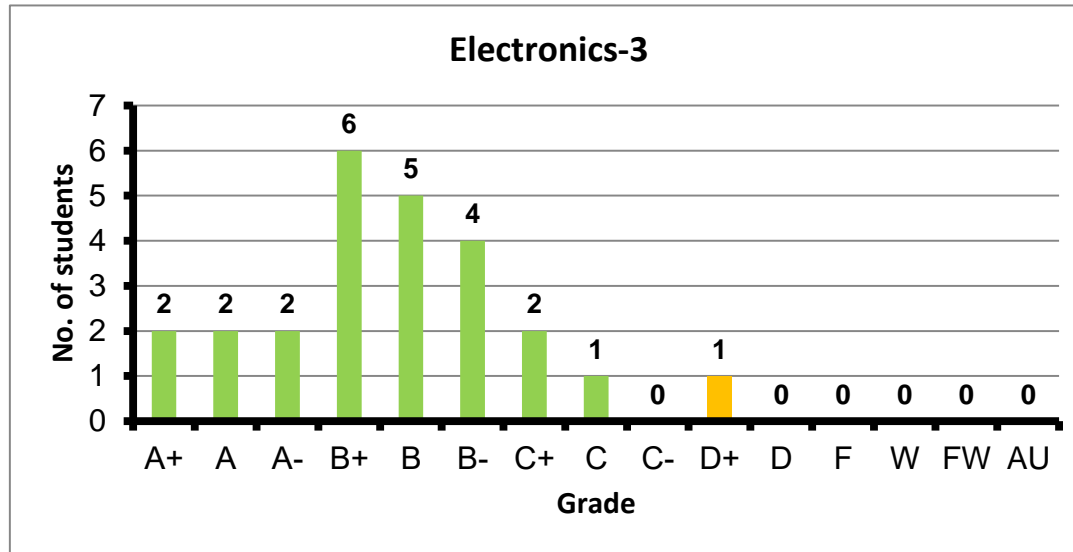
Course: Signal Analysis
 Programs: CCE-E
 Code: EECS203
 Student: 133
 A+ to C: 77%
 C- to D: 15%
 F: 7
 W: 4
 Average: 2.72
 Std Dev: 2.90



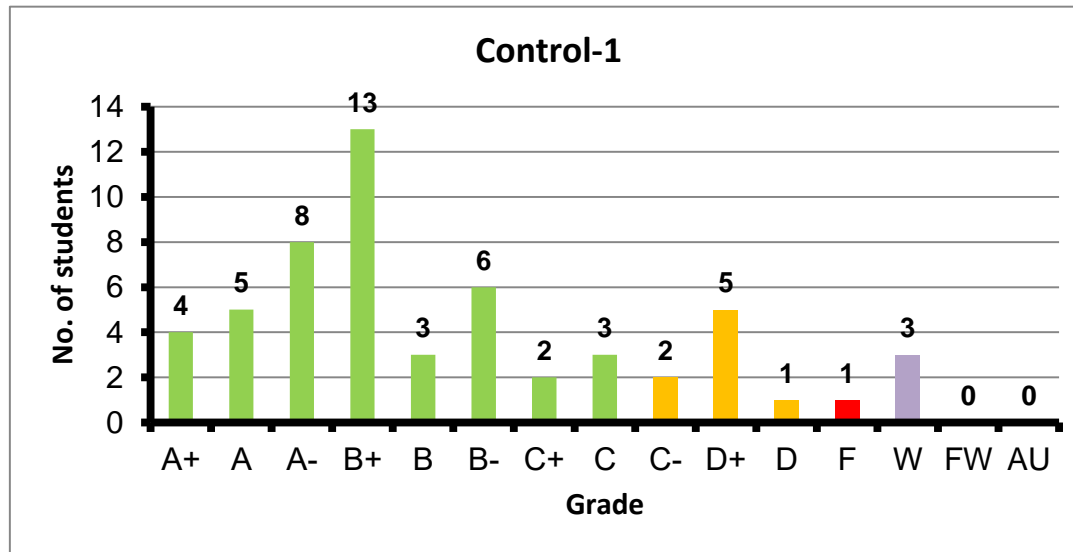
Course: Electromagnetics-1
 Programs: CCE-E
 Code: EECS205
 Student: 36
 A+ to C: 67%
 C- to D: 22%
 F: 3
 W: 1
 Average: 2.21
 Std Dev: 2.43



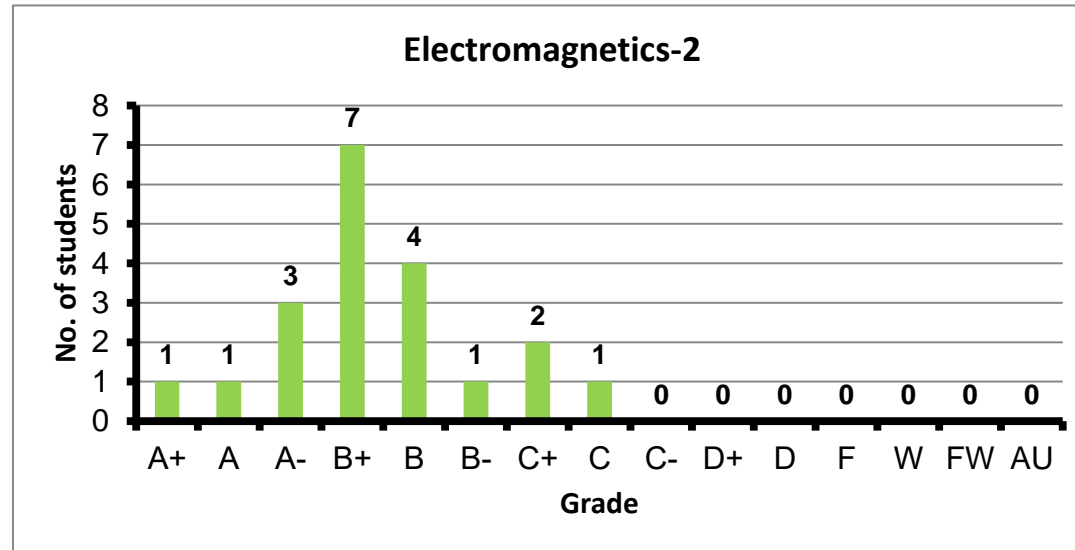
Course: Electronics-3
 Programs: CCE-E
 Code: EECS301
 Student: 25
 A+ to C: 96%
 C- to D: 4%
 F: 0
 W: 0
 Average: 3.08
 Std Dev: 3.21



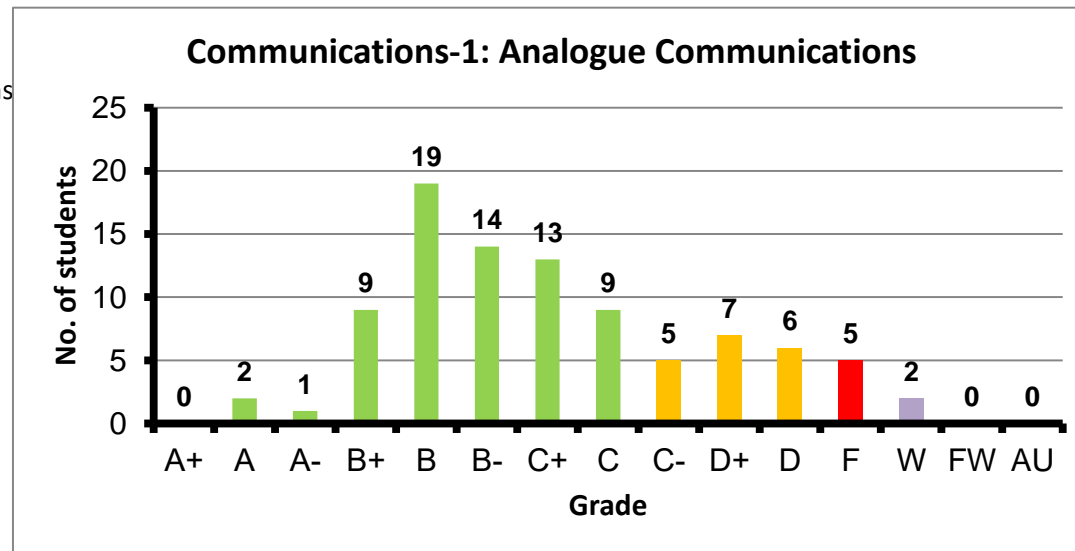
Course: Control-1
 Programs: CCE-E
 Code: EECS304
 Student: 56
 A+ to C: 79%
 C- to D: 14%
 F: 1
 W: 3
 Average: 2.94
 Std Dev: 3.06



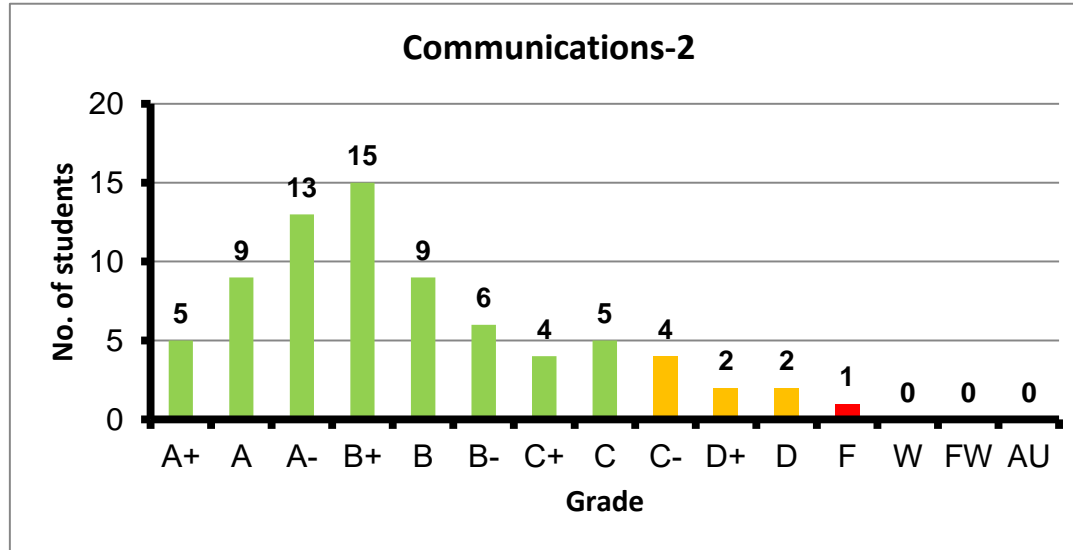
Course: Electromagnetics-2
 Programs: CCE-E
 Code: EECS305
 Student: 20
 A+ to C: 100%
 C- to D: 0%
 F: 0
 W: 0
 Average: 3.18
 Std Dev: 3.30



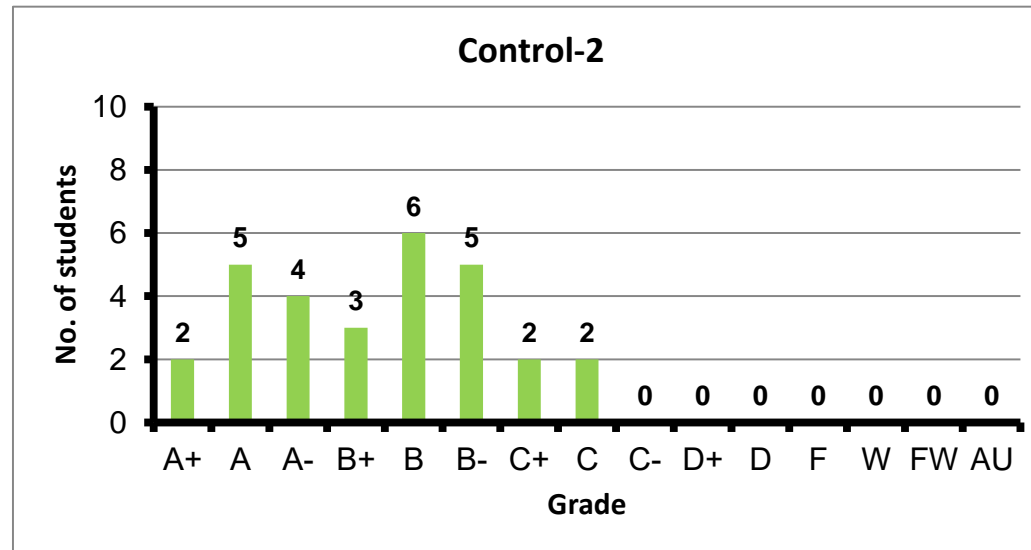
Course: Communications-1: Analogue Communications
 Programs: CCE-E
 Code: EECS306
 Student: 92
 A+ to C: 73%
 C- to D: 20%
 F: 5
 W: 2
 Average: 2.32
 Std Dev: 2.47



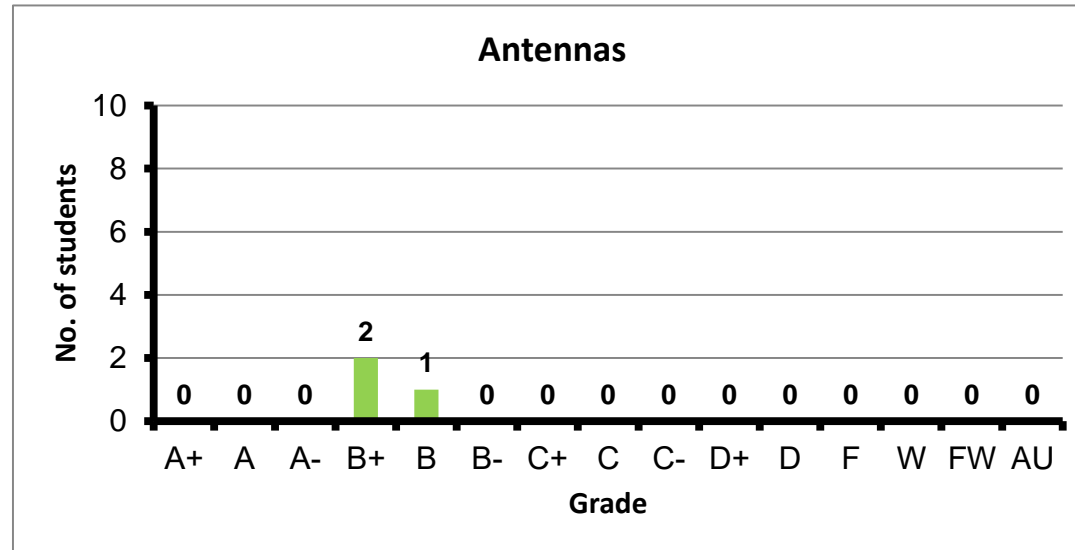
Course: Communications-2
 Programs: CCE-E
 Code: EECS316
 Student: 75
 A+ to C: 88%
 C- to D: 11%
 F: 1
 W: 0
 Average: 3.03
 Std Dev: 3.18



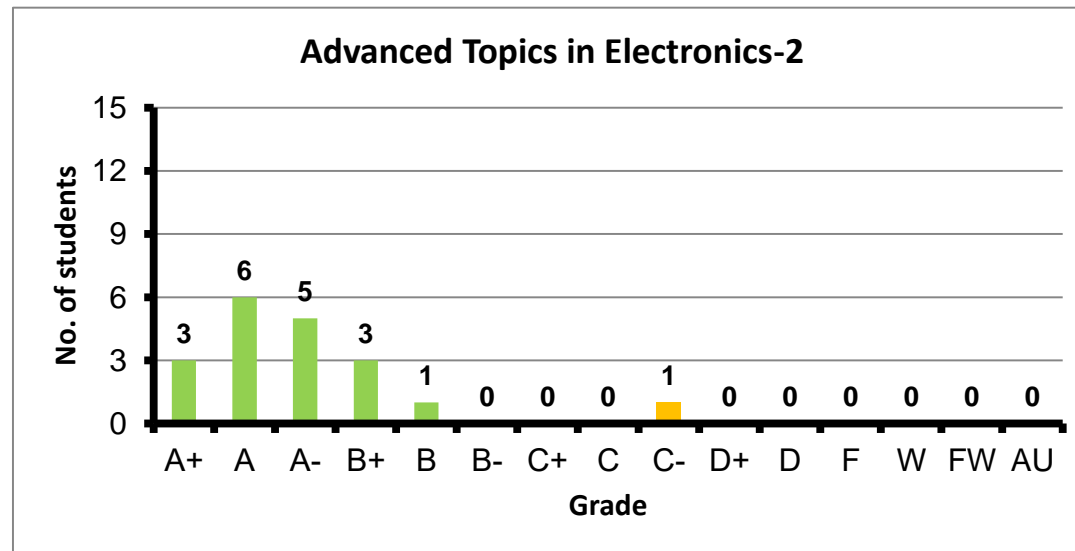
Course: Control-2
 Programs: CCE-E
 Code: 29
 Student: 100%
 A+ to C: 0%
 C- to D: 0
 F: 0
 W: 3.20
 Average: 3.32
 Std Dev: 0.00



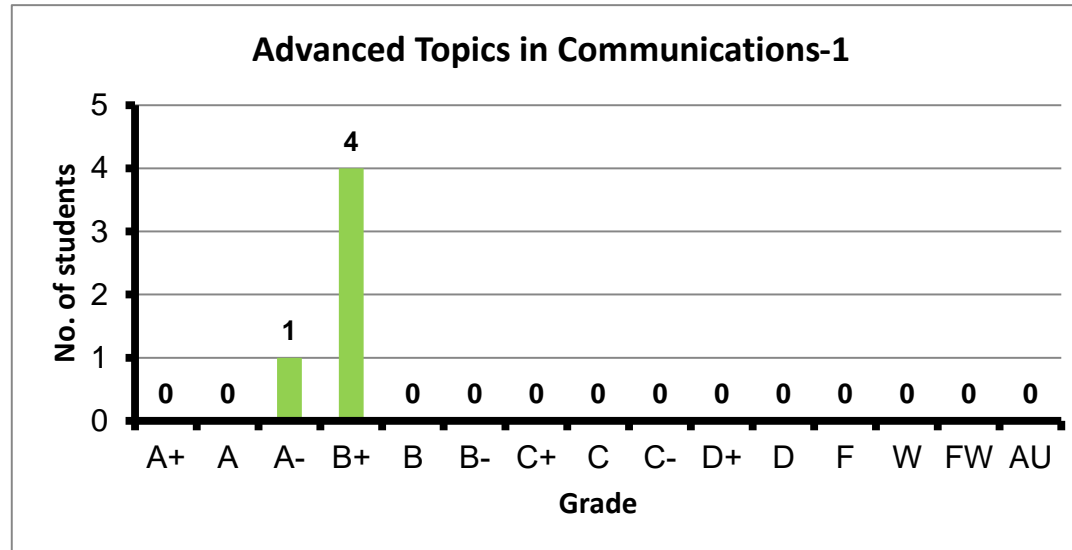
Course: Antennas
Programs: CCE-E
Code: EECS405
Student: 3
A+ to C: 100%
C- to D: 0%
F: 0
W: 0
Average: 3.20
Std Dev: 3.92



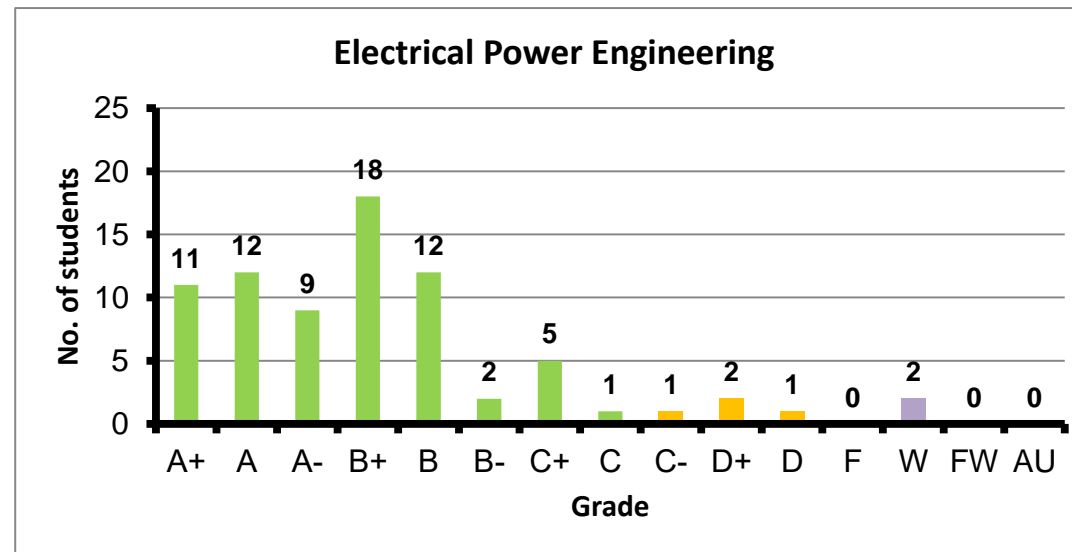
Course: Advanced Topics in Electronics-2
Programs: CCE-E
Code: EECS441
Student: 19
A+ to C: 95%
C- to D: 5%
F: 0
W: 0
Average: 3.64
Std Dev: 3.78



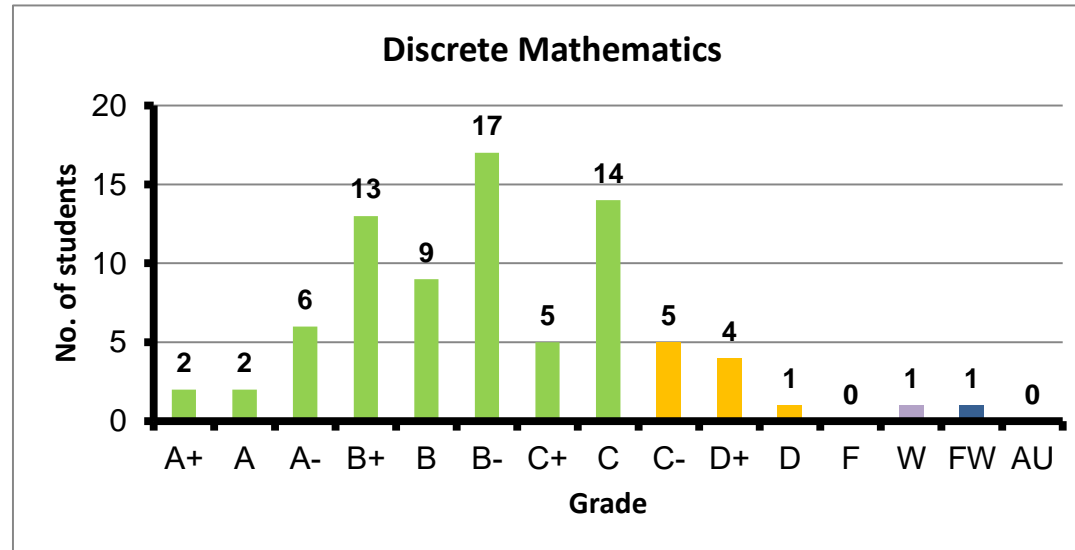
Course: Advanced Topics in Communications-1
 Programs: CCE-E
 Code: EECS446
 Student: 5
 A+ to C: 100%
 C- to D: 0%
 F: 0
 W: 0
 Average: 3.38
 Std Dev: 3.78



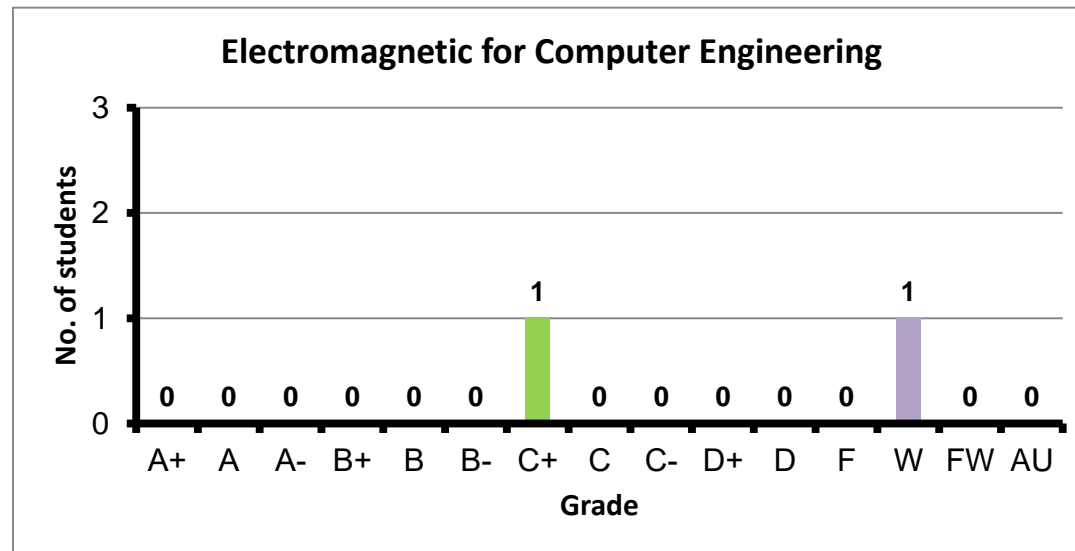
Course: Electrical Power Engineering
 Programs: CCE-E
 Code: EPES125
 Student: 76
 A+ to C: 92%
 C- to D: 5%
 F: 0
 W: 2
 Average: 3.31
 Std Dev: 3.38



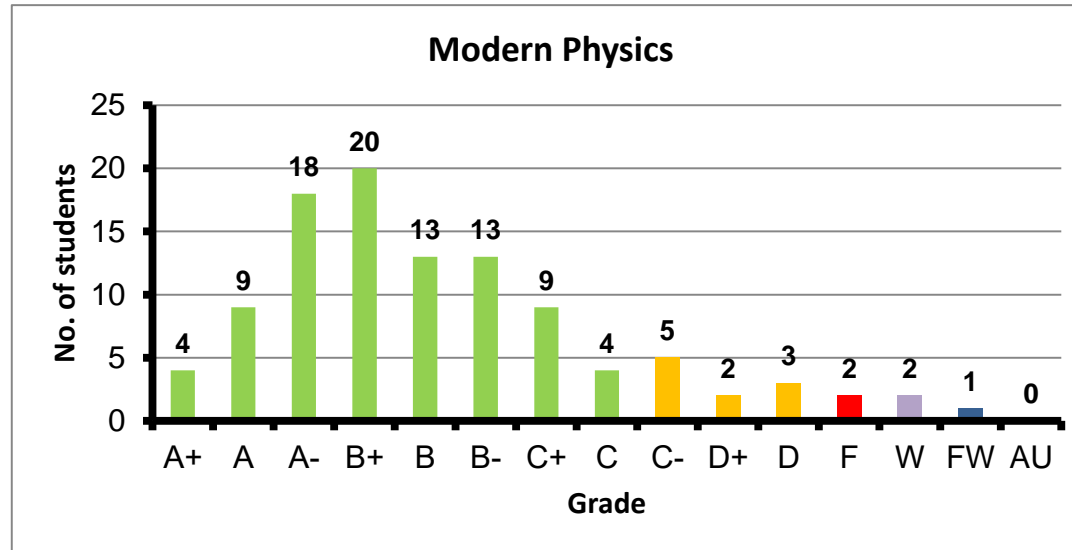
Course: Discrete Mathematics
 Programs: CCE-E
 Code: MTHS004
 Student: 80
 A+ to C: 85%
 C- to D: 13%
 F: 0
 W: 1
 Average: 2.67
 Std Dev: 2.77



Course: Electromagnetic for Computer Engineering
 Programs: CCE-E
 Code: PHYN212
 Student: 2
 A+ to C: 50%
 C- to D: 0%
 F: 0
 W: 1
 Average: 2.30
 Std Dev: #DIV/0!



Course: Modern Physics
 Programs: CCE-E
 Code: PHYS102
 Student: 105
 A+ to C: 86%
 C- to D: 10%
 F: 2
 W: 2
 Average: 2.96
 Std Dev: 3.08



Course: Electromagnetic Fields
 Programs: CCE-E
 Code: PHYS211
 Student: 32
 A+ to C: 84%
 C- to D: 6%
 F: 3
 W: 0
 Average: 2.66
 Std Dev: 2.94

