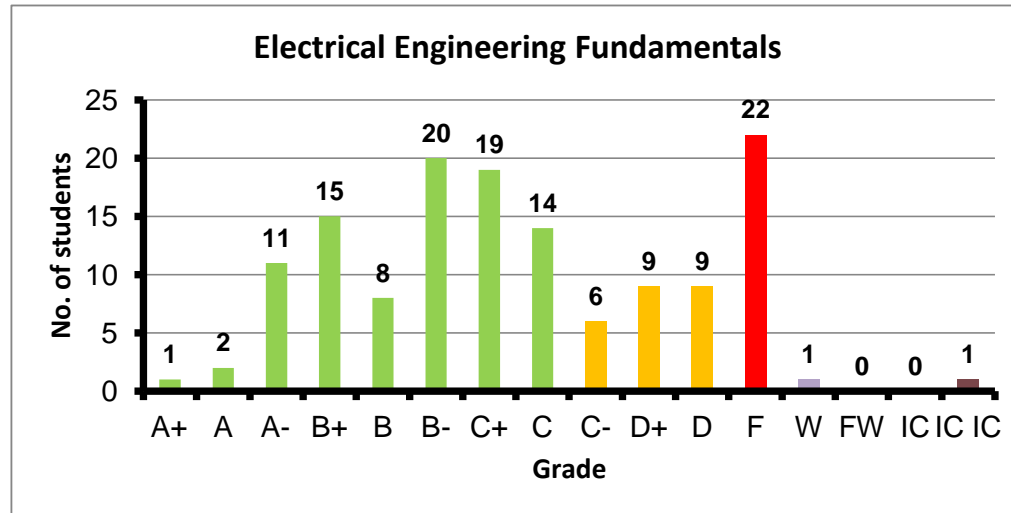
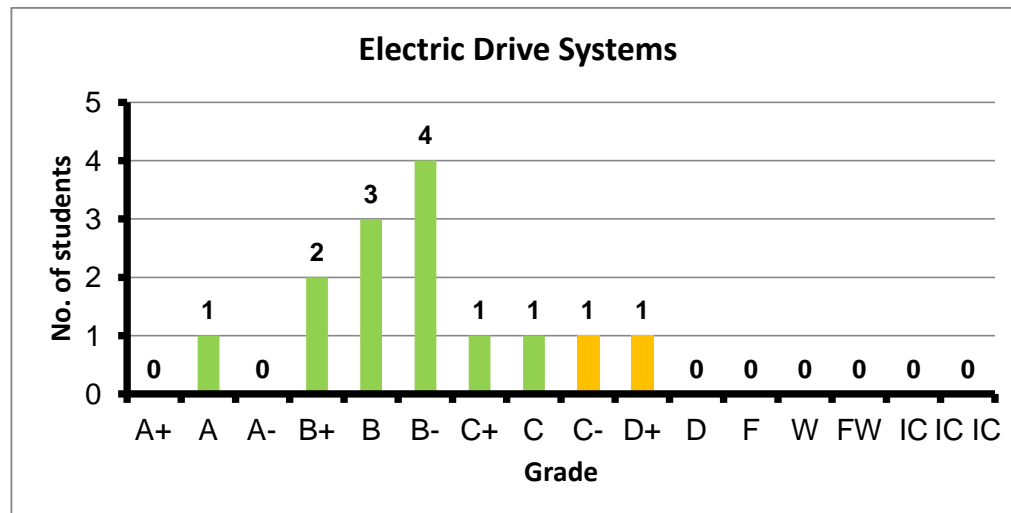


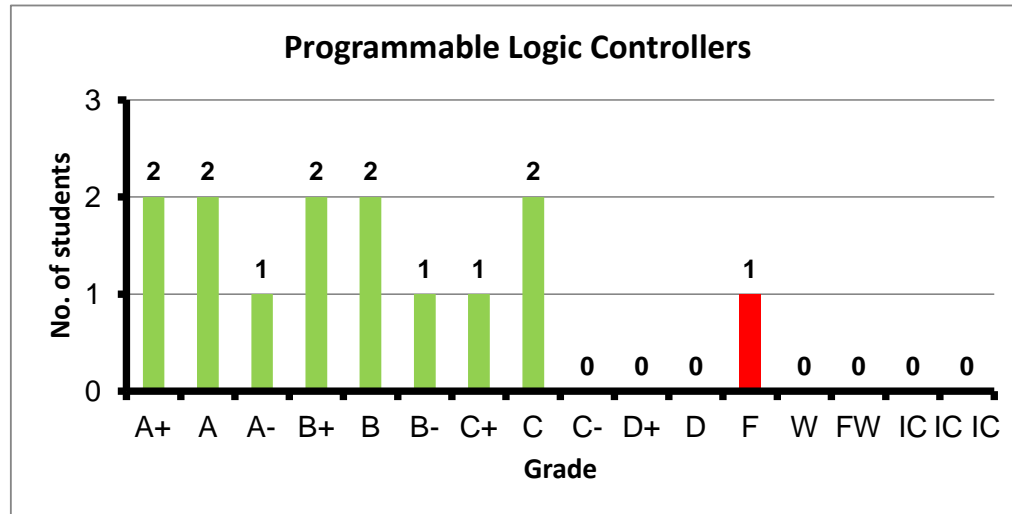
Course: Electrical Engineering Fundamentals  
 Programs: MDE  
 Code: EPMN101  
 Student: 138  
 A+ to C: 66%  
 C- to D: 18%  
 F: 22  
 W: 1  
 Average: 2.09  
 Std Dev: 2.39



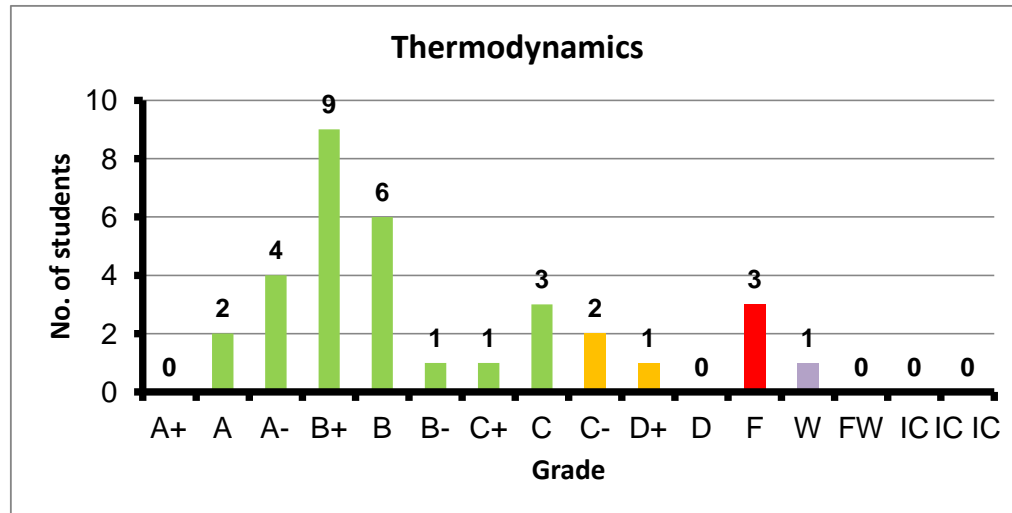
Course: Electric Drive Systems  
 Programs: MDE  
 Code: EPMN202  
 Student: 14  
 A+ to C: 86%  
 C- to D: 14%  
 F: 0  
 W: 0  
 Average: 2.70  
 Std Dev: 2.88



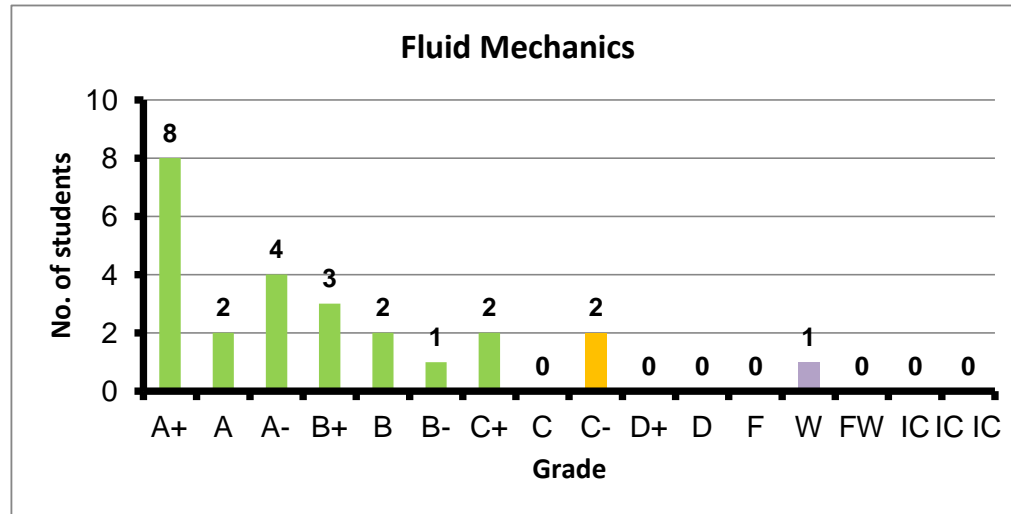
Course: Programmable Logic Controllers  
 Programs: MDE  
 Code: EPMN404  
 Student: 14  
 A+ to C: 93%  
 C- to D: 0%  
 F: 1  
 W: 0  
 Average: 2.95  
 Std Dev: 3.26



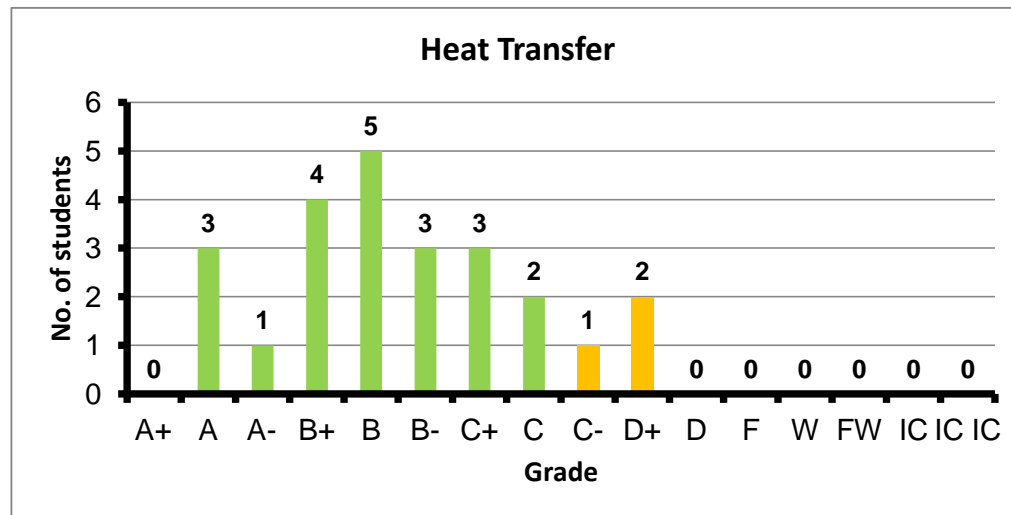
Course: Thermodynamics  
 Programs: MDE  
 Code: MCNN101  
 Student: 33  
 A+ to C: 79%  
 C- to D: 9%  
 F: 3  
 W: 1  
 Average: 2.70  
 Std Dev: 2.93



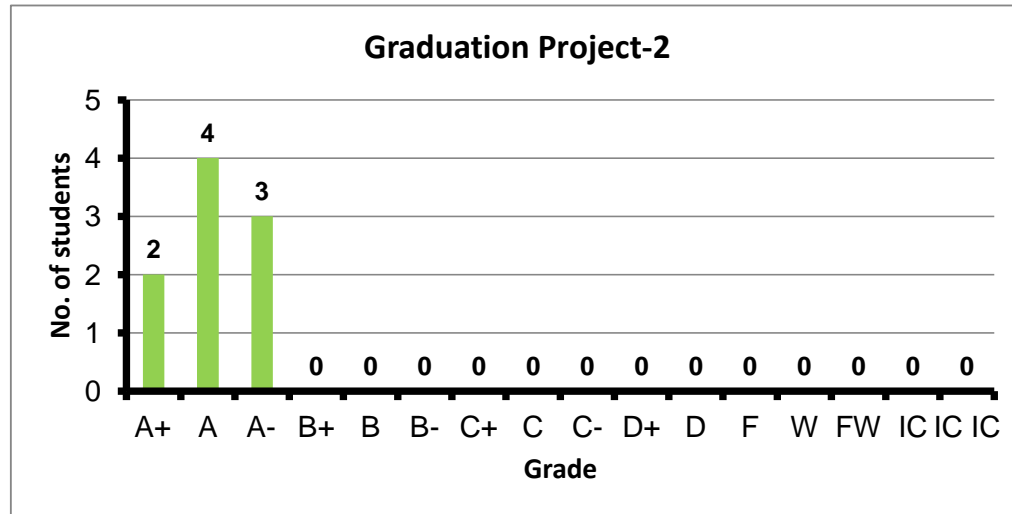
Course: Fluid Mechanics  
 Programs: MDE  
 Code: MCNN202  
 Student: 25  
 A+ to C: 88%  
 C- to D: 8%  
 F: 0  
 W: 1  
 Average: 3.39  
 Std Dev: 3.51



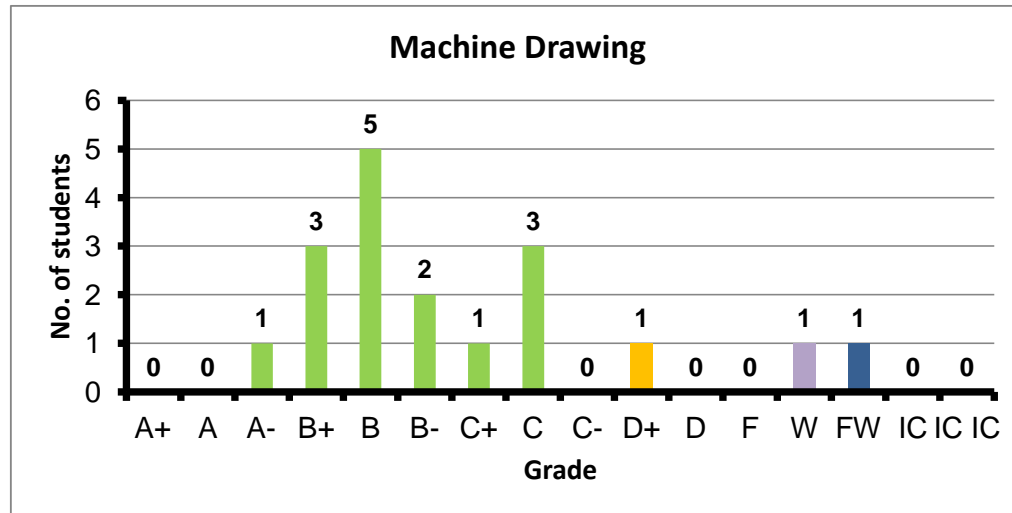
Course: Heat Transfer  
 Programs: MDE  
 Code: MCNN326  
 Student: 24  
 A+ to C: 88%  
 C- to D: 13%  
 F: 0  
 W: 0  
 Average: 2.81  
 Std Dev: 2.97



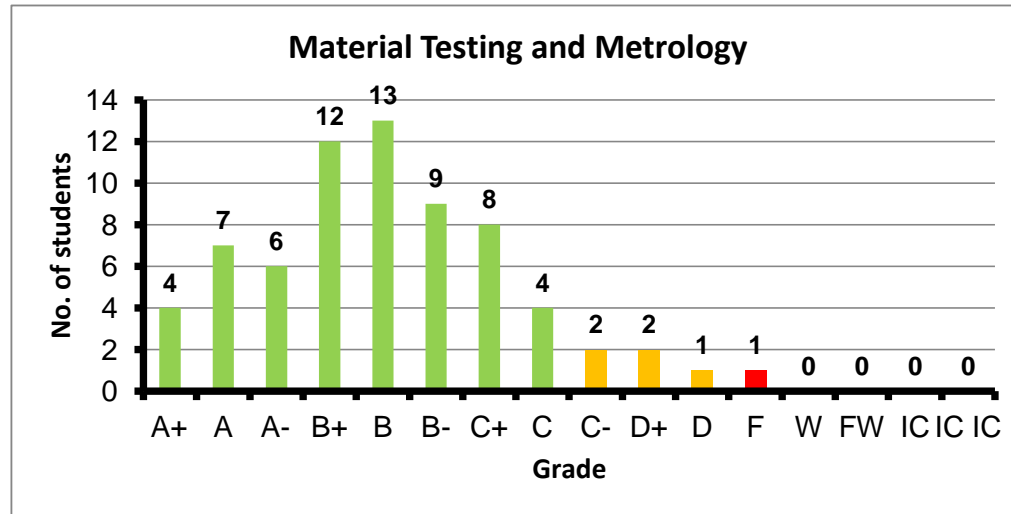
Course: Graduation Project-2  
 Programs: MDE  
 Code: MDEN481  
 Student: 9  
 A+ to C: 100%  
 C- to D: 0%  
 F: 0  
 W: 0  
 Average: 3.90  
 Std Dev: 4.14



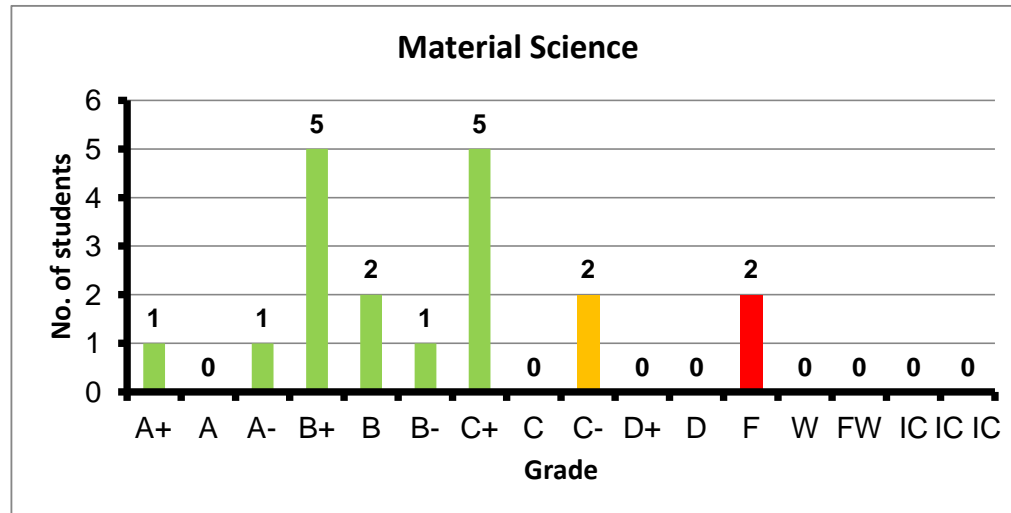
Course: Machine Drawing  
 Programs: MDE  
 Code: MDPN117  
 Student: 18  
 A+ to C: 83%  
 C- to D: 6%  
 F: 0  
 W: 1  
 Average: 2.73  
 Std Dev: 2.83



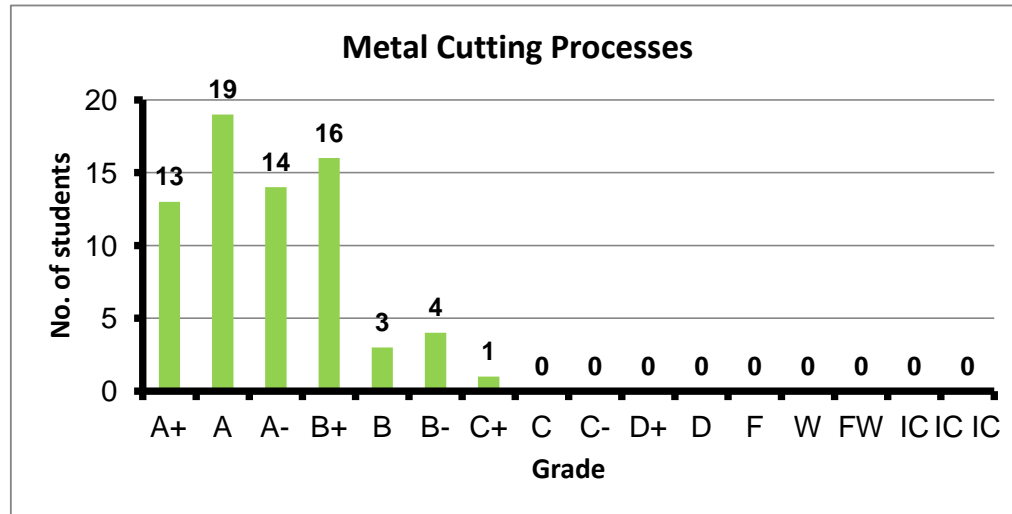
Course: Material Testing and Metrology  
 Programs: MDE  
 Code: MDPN131  
 Student: 69  
 A+ to C: 91%  
 C- to D: 7%  
 F: 1  
 W: 0  
 Average: 2.94  
 Std Dev: 3.07



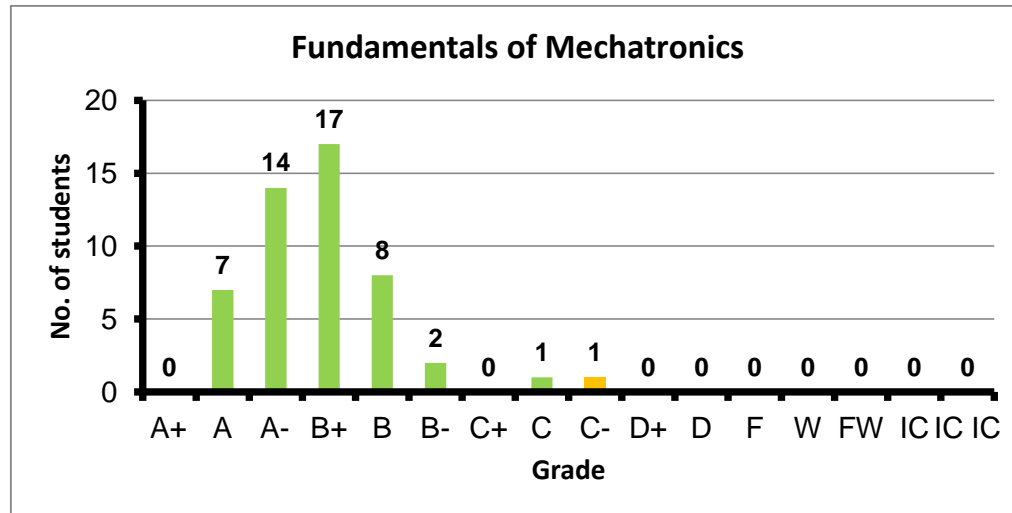
Course: Material Science  
 Programs: MDE  
 Code: MDPN132  
 Student: 19  
 A+ to C: 79%  
 C- to D: 11%  
 F: 2  
 W: 0  
 Average: 2.52  
 Std Dev: 2.81



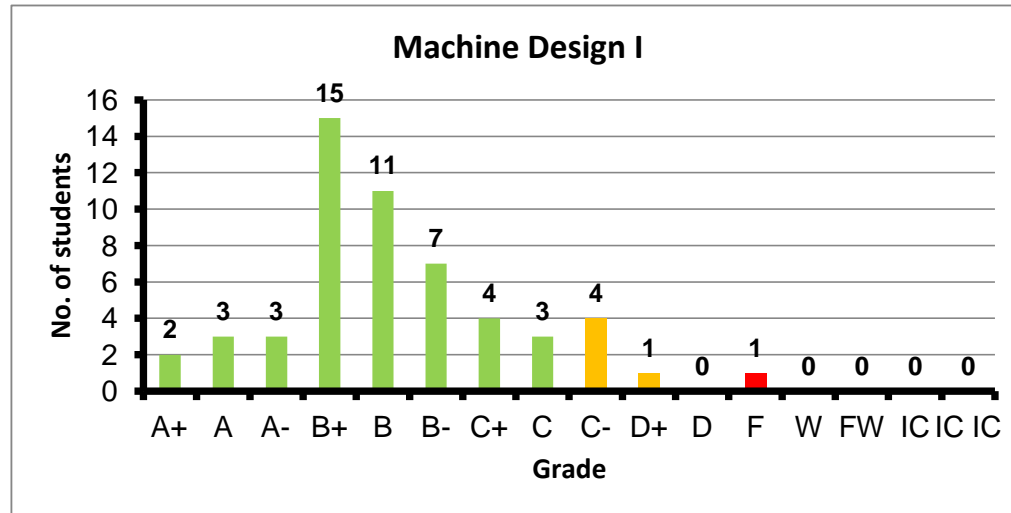
Course: Metal Cutting Processes  
 Programs: MDE  
 Code: MDPN141  
 Student: 70  
 A+ to C: 100%  
 C- to D: 0%  
 F: 0  
 W: 0  
 Average: 3.64  
 Std Dev: 3.69



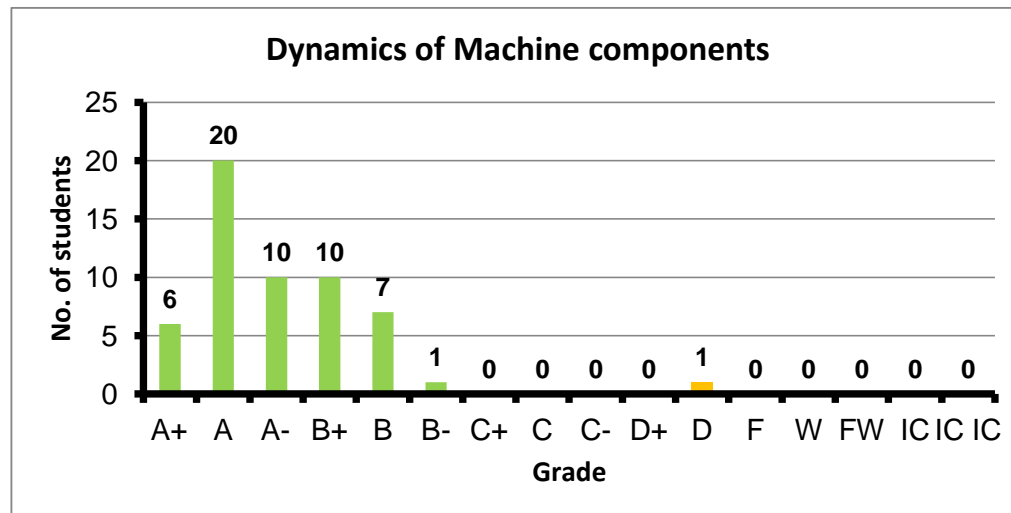
Course: Fundamentals of Mechatronics  
 Programs: MDE  
 Code: MDPN250  
 Student: 50  
 A+ to C: 98%  
 C- to D: 2%  
 F: 0  
 W: 0  
 Average: 3.38  
 Std Dev: 3.45



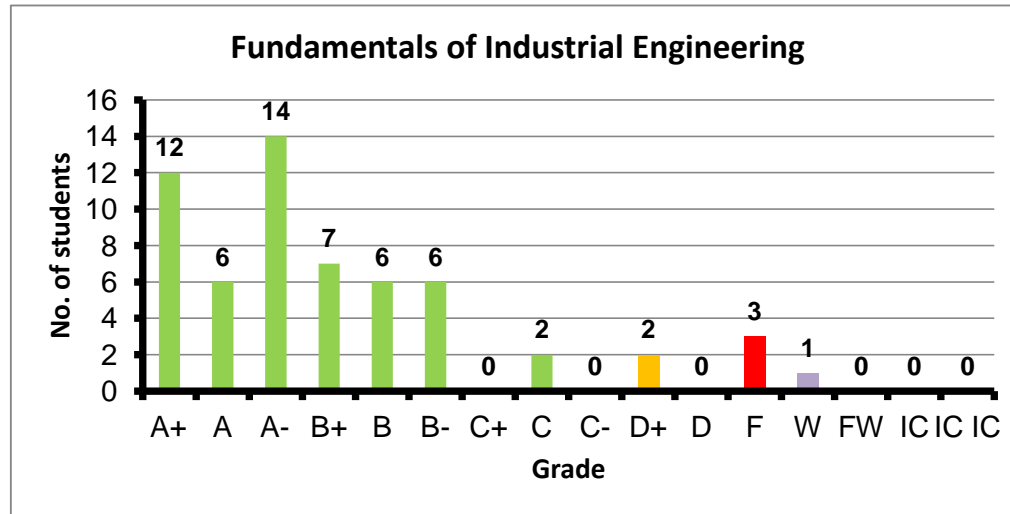
Course: Machine Design I  
 Programs: MDE  
 Code: MDPN252  
 Student: 54  
 A+ to C: 89%  
 C- to D: 9%  
 F: 1  
 W: 0  
 Average: 2.89  
 Std Dev: 3.01



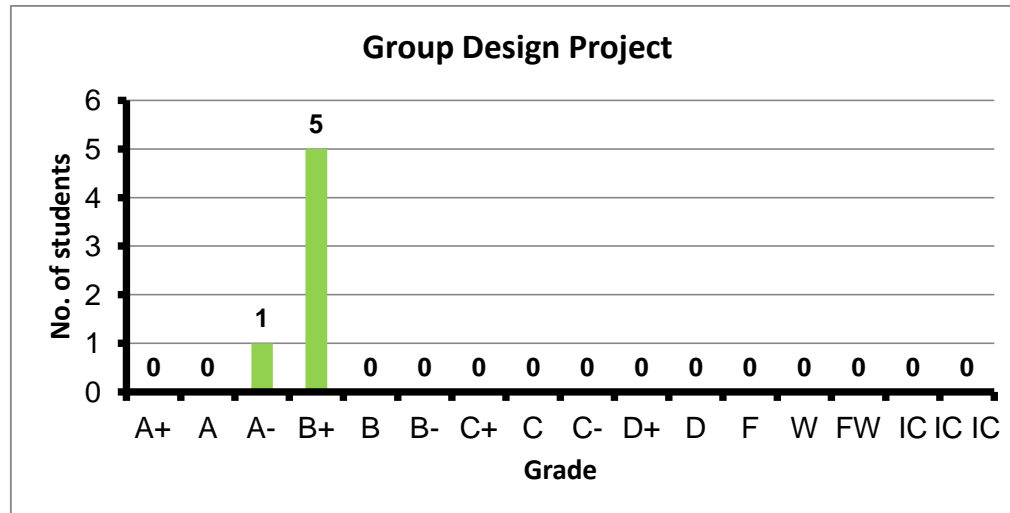
Course: Dynamics of Machine components  
 Programs: MDE  
 Code: MDPN253  
 Student: 55  
 A+ to C: 98%  
 C- to D: 2%  
 F: 0  
 W: 0  
 Average: 3.61  
 Std Dev: 3.68



Course: Fundamentals of Industrial Engineering  
 Programs: MDE  
 Code: MDPN260  
 Student: 59  
 A+ to C: 90%  
 C- to D: 3%  
 F: 3  
 W: 1  
 Average: 3.24  
 Std Dev: 3.40

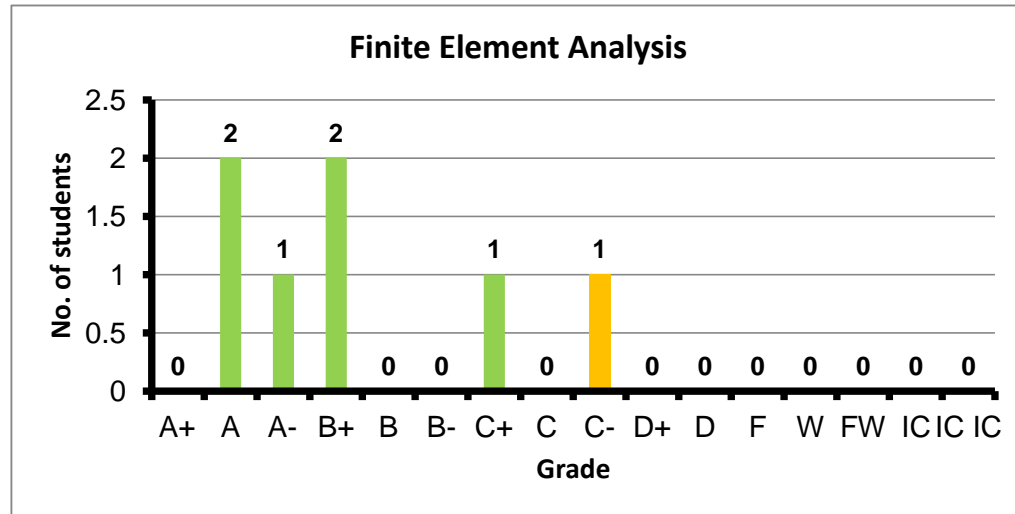


Course: Group Design Project  
 Programs: MDE  
 Code: MDPN313  
 Student: 6  
 A+ to C: 100%  
 C- to D: 0%  
 F: 0  
 W: 0  
 Average: 3.37  
 Std Dev: 3.69

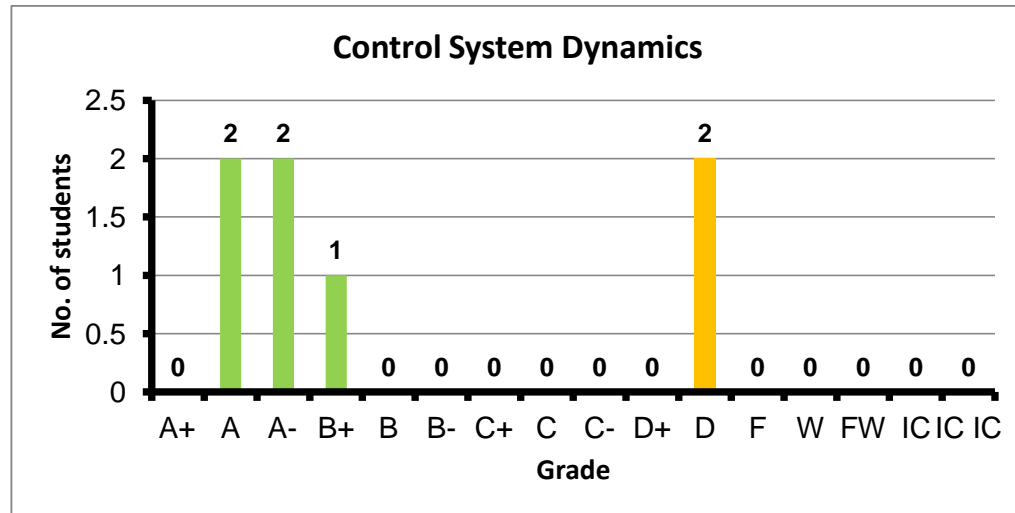




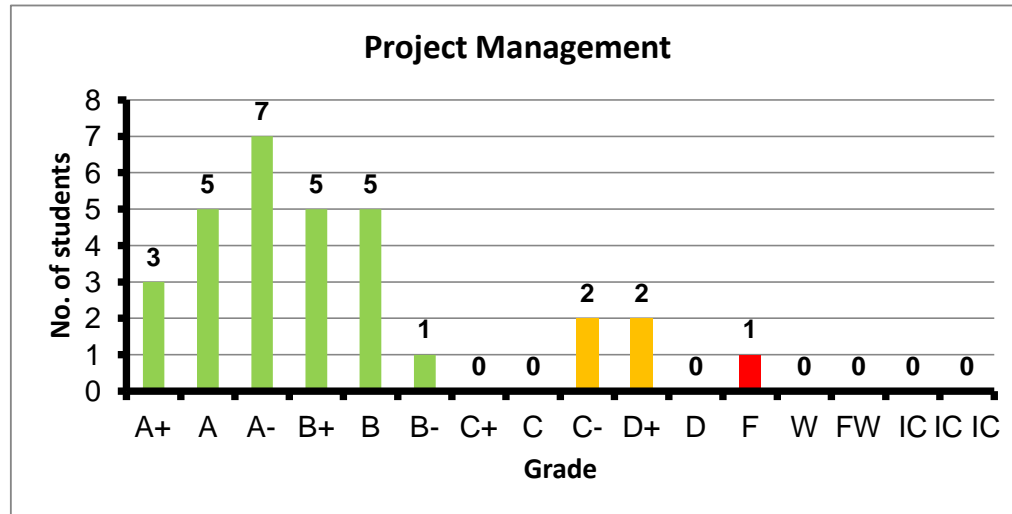
Course: Finite Element Analysis  
 Programs: MDE  
 Code: MDPN363  
 Student: 7  
 A+ to C: 86%  
 C- to D: 14%  
 F: 0  
 W: 0  
 Average: 3.19  
 Std Dev: 3.55



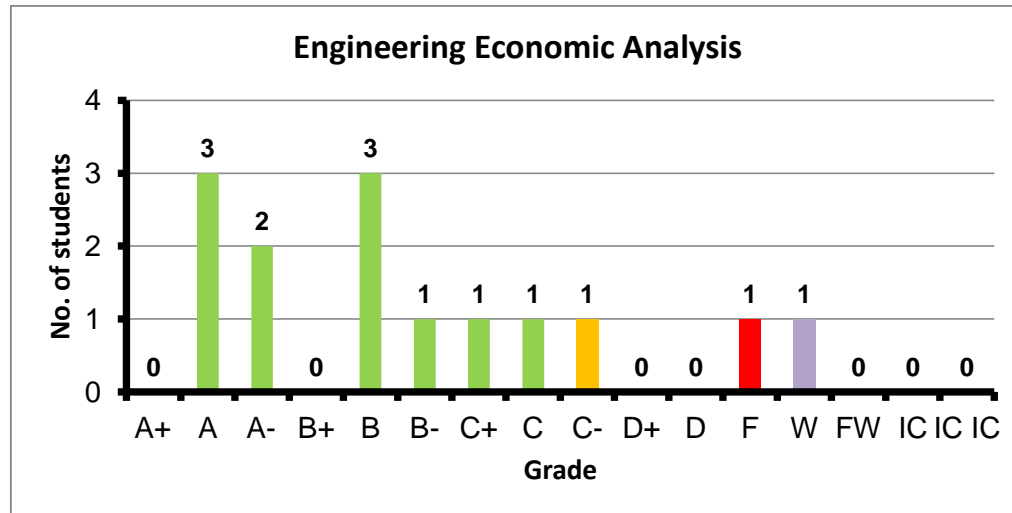
Course: Control System Dynamics  
 Programs: MDE  
 Code: MDPN372  
 Student: 7  
 A+ to C: 71%  
 C- to D: 29%  
 F: 0  
 W: 0  
 Average: 2.96  
 Std Dev: 3.47



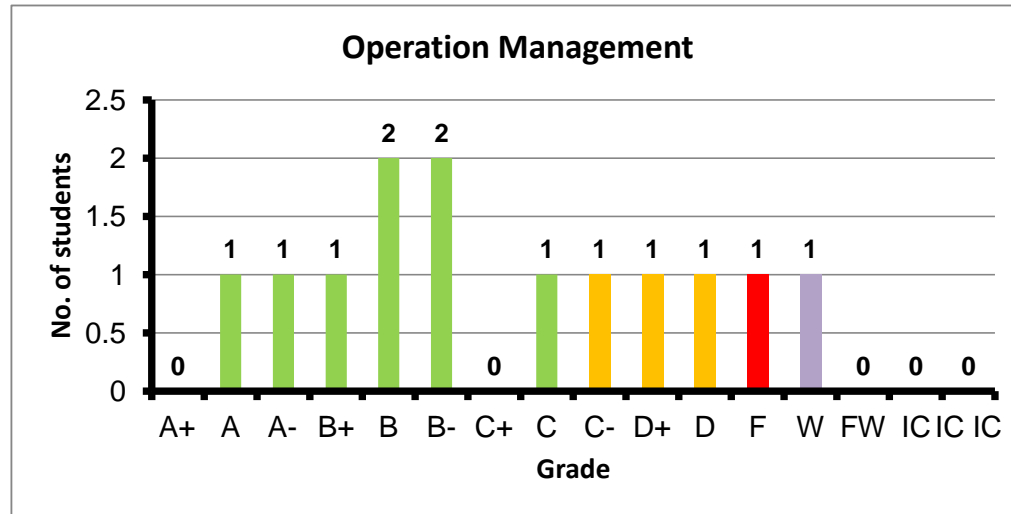
Course: Project Management  
 Programs: MDE  
 Code: MDPN424  
 Student: 31  
 A+ to C: 84%  
 C- to D: 13%  
 F: 1  
 W: 0  
 Average: 3.17  
 Std Dev: 3.37



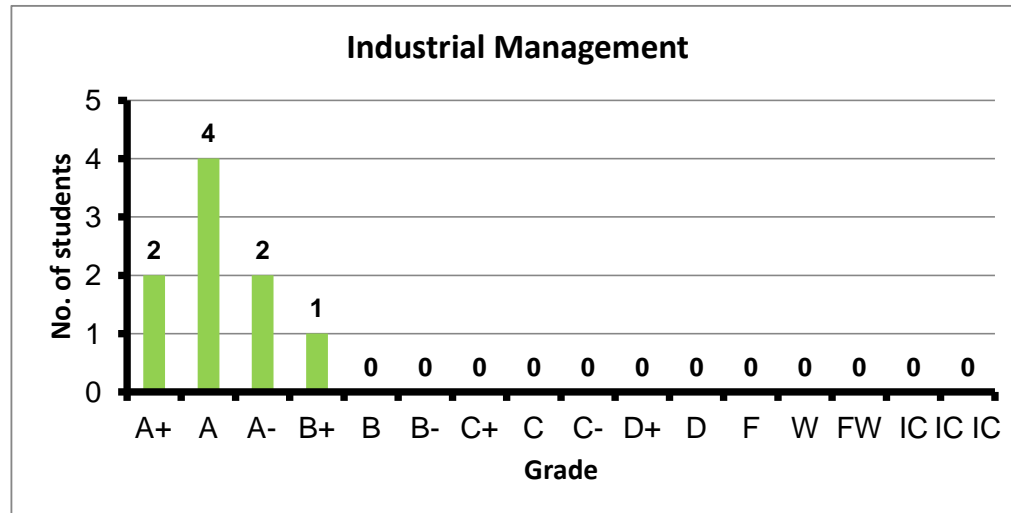
Course: Engineering Economic Analysis  
 Programs: MDE  
 Code: MDPN426  
 Student: 14  
 A+ to C: 79%  
 C- to D: 7%  
 F: 1  
 W: 1  
 Average: 2.85  
 Std Dev: 3.12



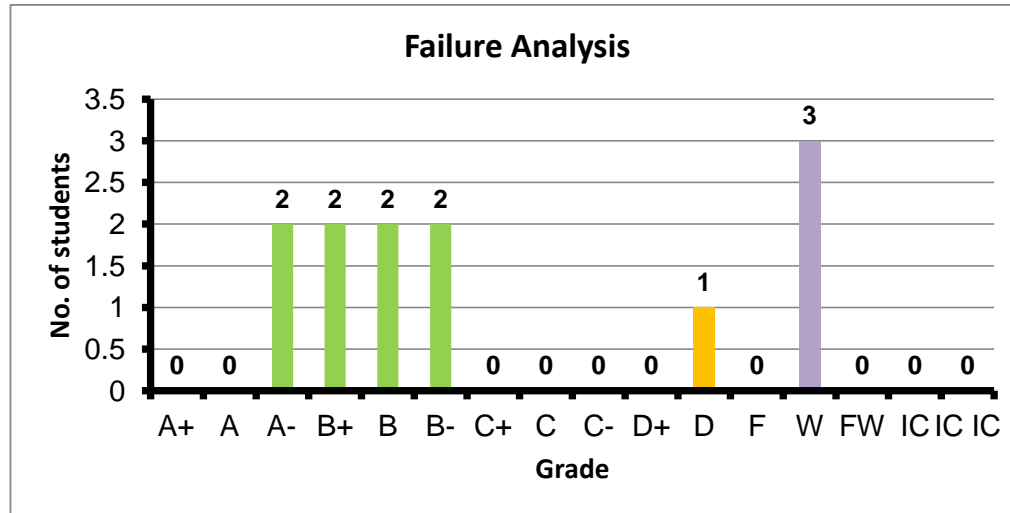
Course: Operation Management  
 Programs: MDE  
 Code: MDPN437  
 Student: 13  
 A+ to C: 62%  
 C- to D: 23%  
 F: 1  
 W: 1  
 Average: 2.38  
 Std Dev: 2.67



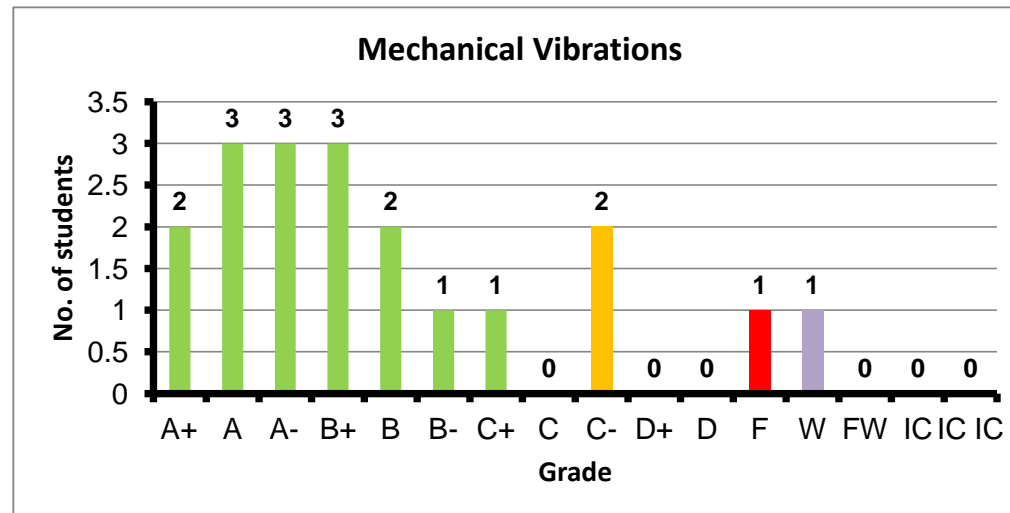
Course: Industrial Management  
 Programs: MDE  
 Code: MDPN463  
 Student: 9  
 A+ to C: 100%  
 C- to D: 0%  
 F: 0  
 W: 0  
 Average: 3.86  
 Std Dev: 4.10



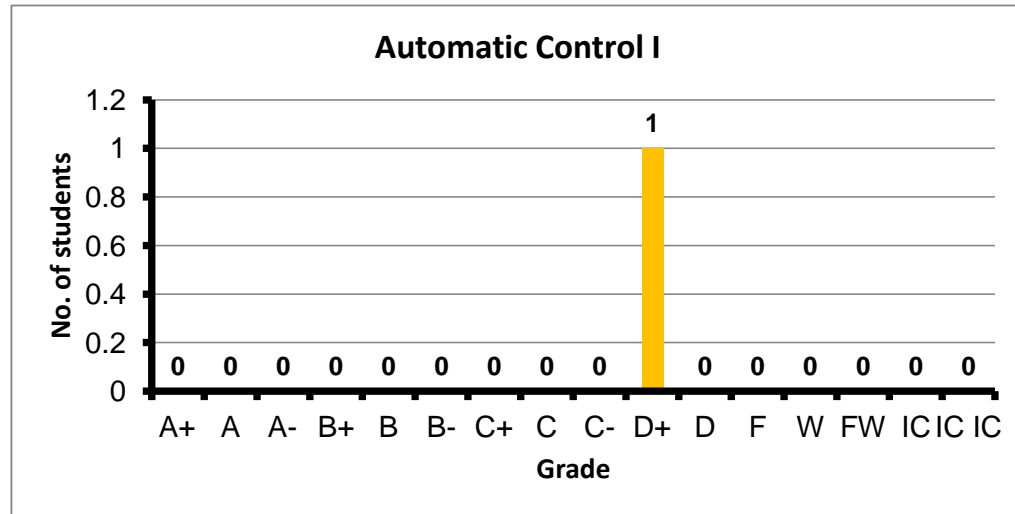
Course: Failure Analysis  
 Programs: MDE  
 Code: MDPN464  
 Student: 12  
 A+ to C: 67%  
 C- to D: 8%  
 F: 0  
 W: 3  
 Average: 2.93  
 Std Dev: 2.96



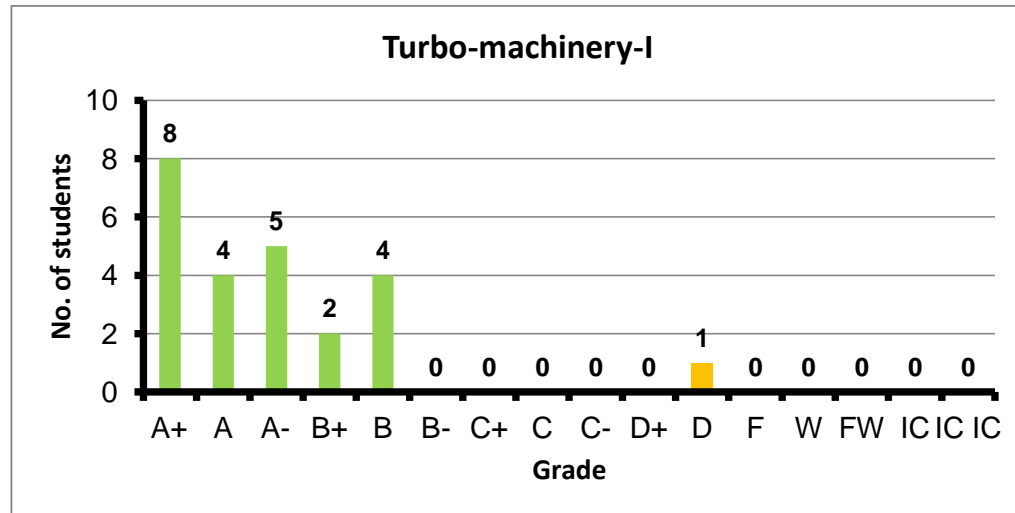
Course: Mechanical Vibrations  
 Programs: MDE  
 Code: MDPN471  
 Student: 19  
 A+ to C: 79%  
 C- to D: 11%  
 F: 1  
 W: 1  
 Average: 3.08  
 Std Dev: 3.29



Course: Automatic Control I  
 Programs: MDE  
 Code: MDPN473  
 Student: 1  
 A+ to C: 0%  
 C- to D: 100%  
 F: 0  
 W: 0  
 Average: 1.40  
 Std Dev: #DIV/0!



Course: Turbo-machinery-I  
 Programs: MDE  
 Code: MEPN345  
 Student: 24  
 A+ to C: 96%  
 C- to D: 4%  
 F: 0  
 W: 0  
 Average: 3.59  
 Std Dev: 3.73



Course: Optics and Sound  
Programs: MDE  
Code: PHYN104  
Student: 65  
A+ to C: 89%  
C- to D: 8%  
F: 2  
W: 0  
Average: 2.92  
Std Dev: 3.07

