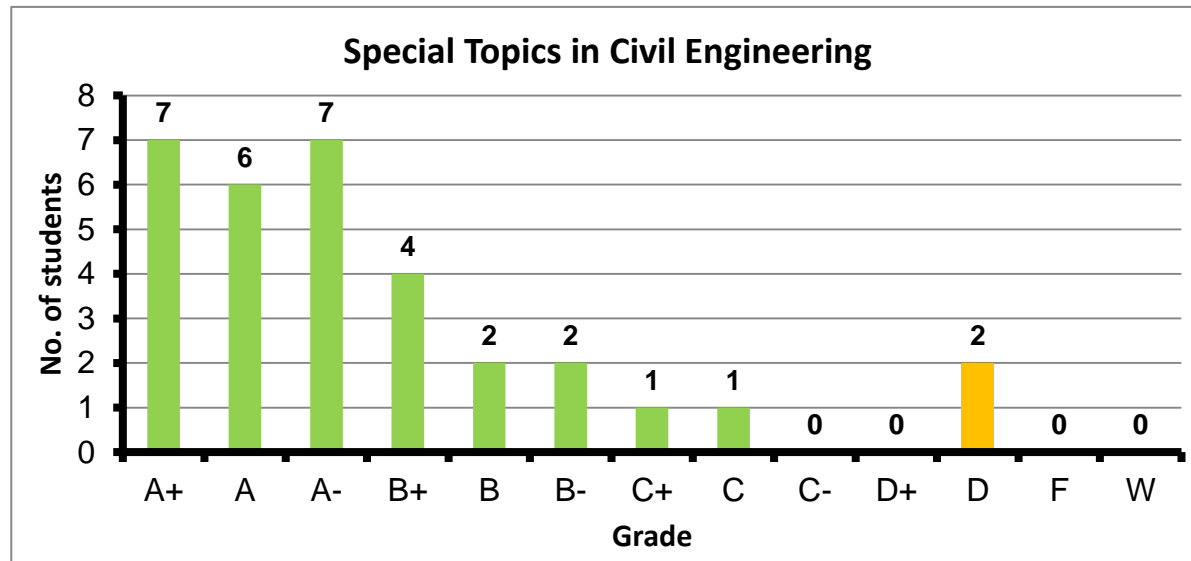
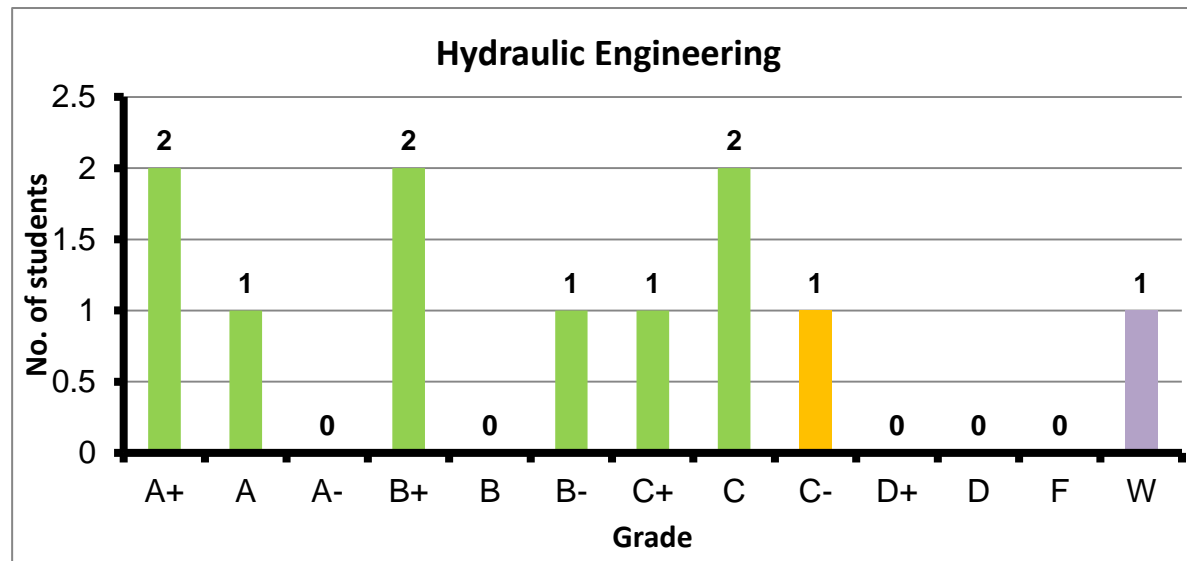


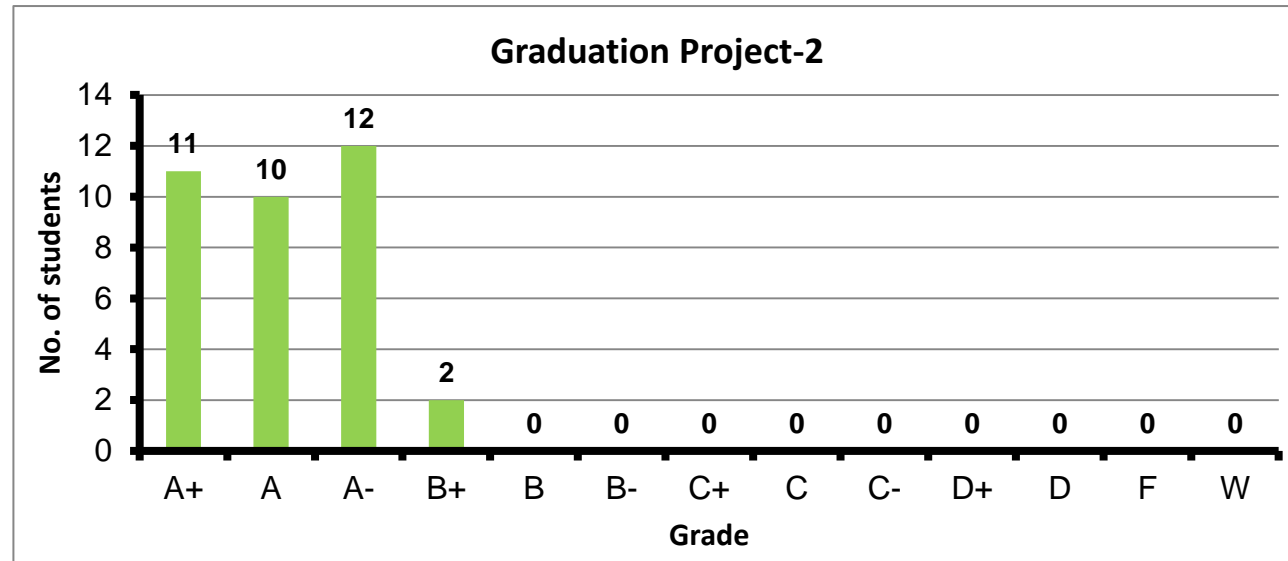
Course: Special Topics in Civil Engineering  
 Programs: STE  
 Code: CVEN361  
 Student: 32  
 A+ to C: 94%  
 C- to D: 6%  
 F: 0  
 W: 0  
 Average: 3.40  
 Std Dev: 0.83



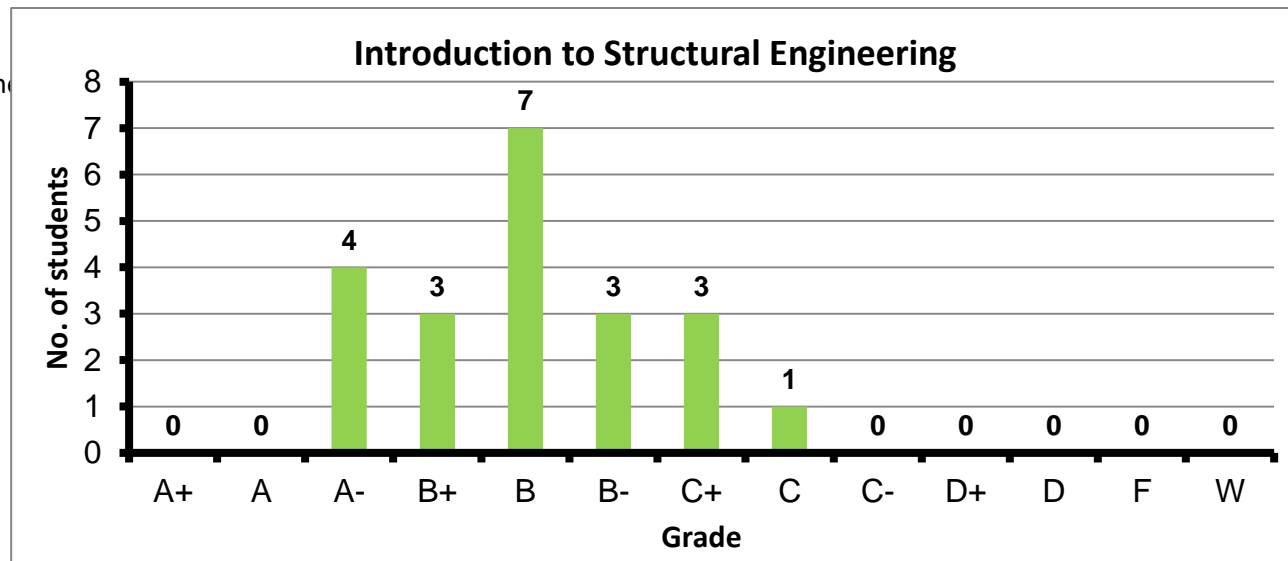
Course: Hydraulic Engineering  
 Programs: STE  
 Code: IHDN312  
 Student: 11  
 A+ to C: 90%  
 C- to D: 10%  
 F: 0  
 W: 1  
 Average: 2.93  
 Std Dev: 0.91



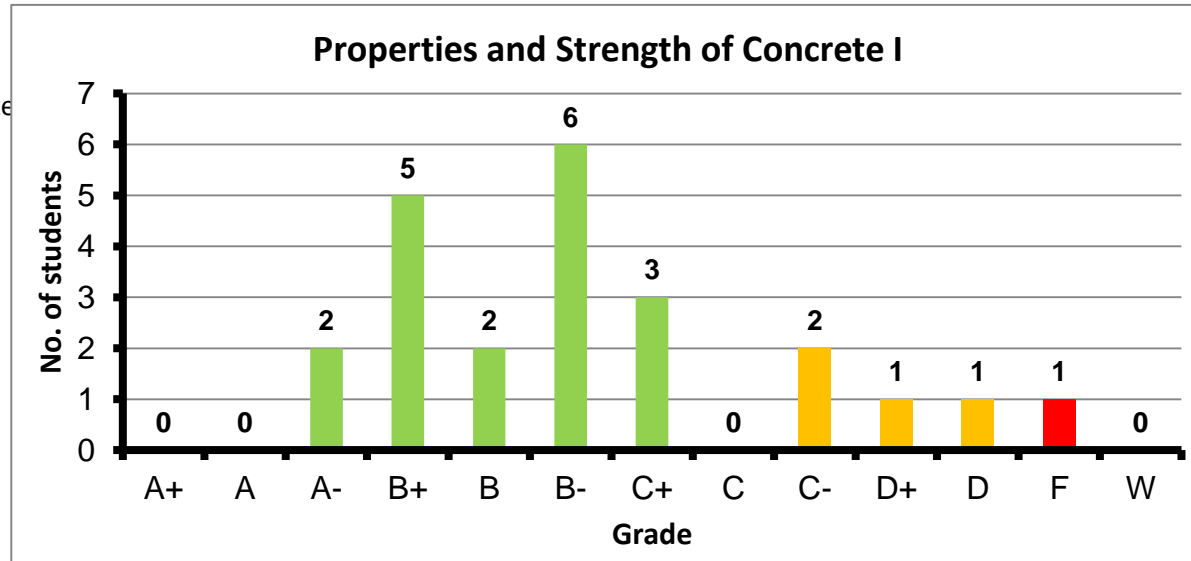
Course: Graduation Project-2  
 Programs: STE  
 Code: STEN481  
 Student: 35  
 A+ to C: 100%  
 C- to D: 0%  
 F: 0  
 W: 0  
 Average: 3.86  
 Std Dev: 0.20



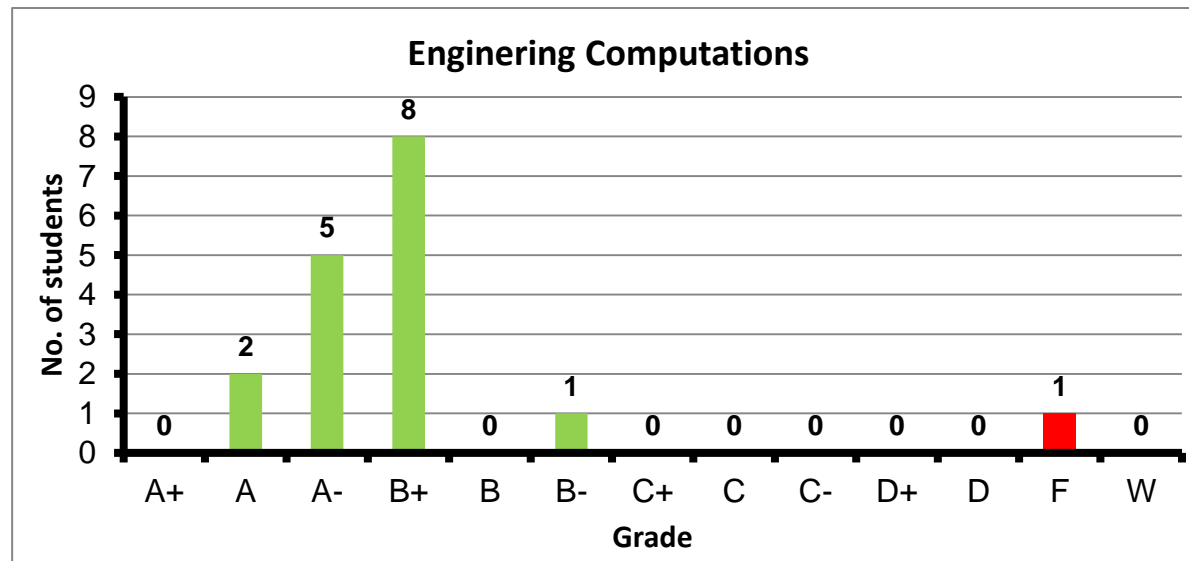
Course: Introduction to Structural Engineering  
 Programs: STE  
 Code: STRN100  
 Student: 21  
 A+ to C: 100%  
 C- to D: 0%  
 F: 0  
 W: 0  
 Average: 2.99  
 Std Dev: 0.50



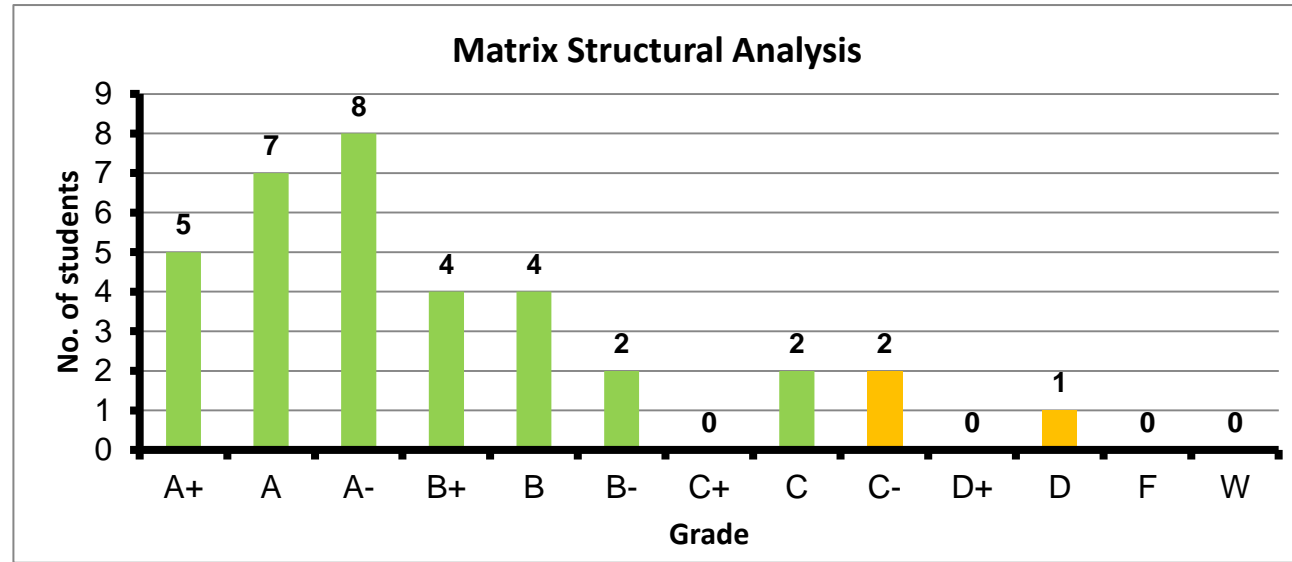
Course: Properties and Strength of Concrete  
 Programs: STE  
 Code: STRN203  
 Student: 23  
 A+ to C: 78%  
 C- to D: 17%  
 F: 1  
 W: 0  
 Average: 2.56  
 Std Dev: 0.91



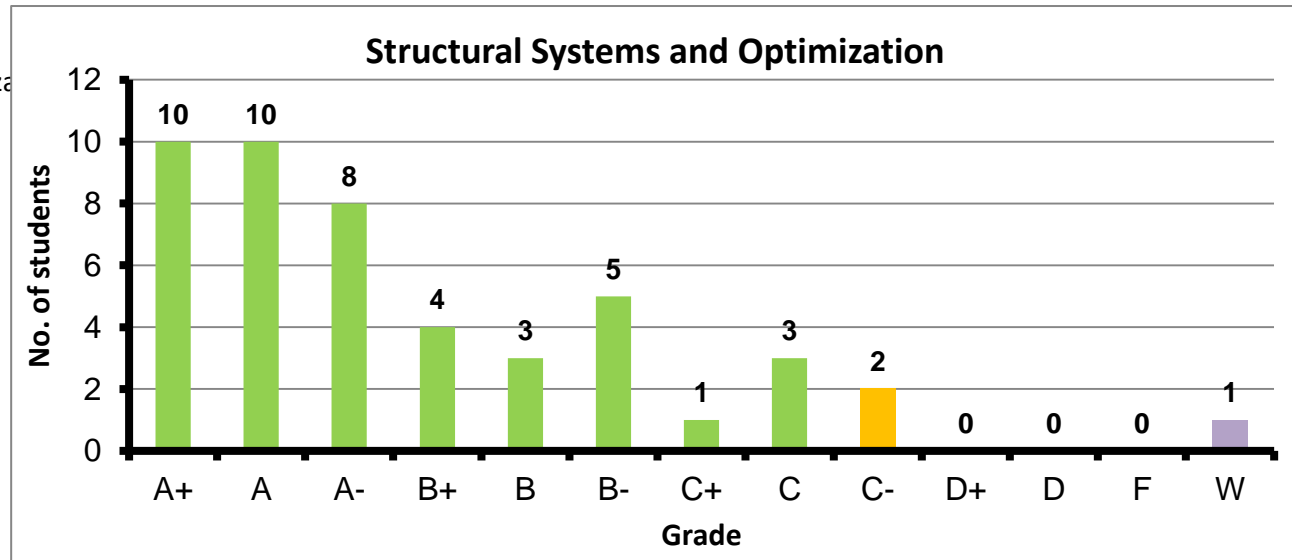
Course: Engineering Computations  
 Programs: STE  
 Code: STRN215  
 Student: 23  
 A+ to C: 94%  
 C- to D: 0%  
 F: 1  
 W: 0  
 Average: 3.27  
 Std Dev: 0.90



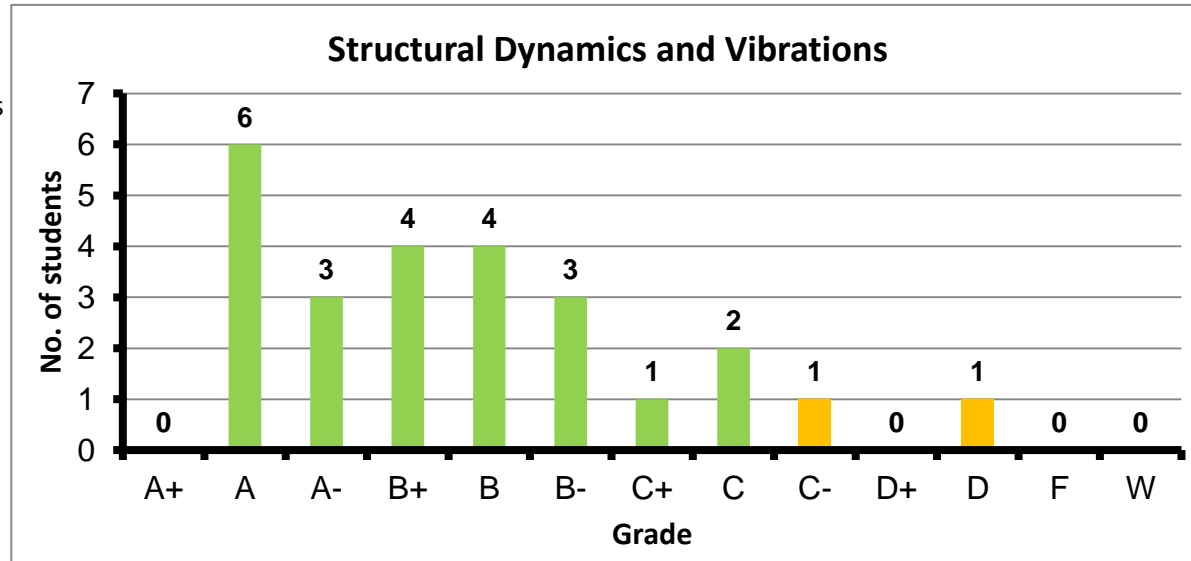
Course: Matrix Structural Analysis  
 Programs: STE  
 Code: STRN305  
 Student: 35  
 A+ to C: 91%  
 C- to D: 9%  
 F: 0  
 W: 0  
 Average: 3.33  
 Std Dev: 0.80



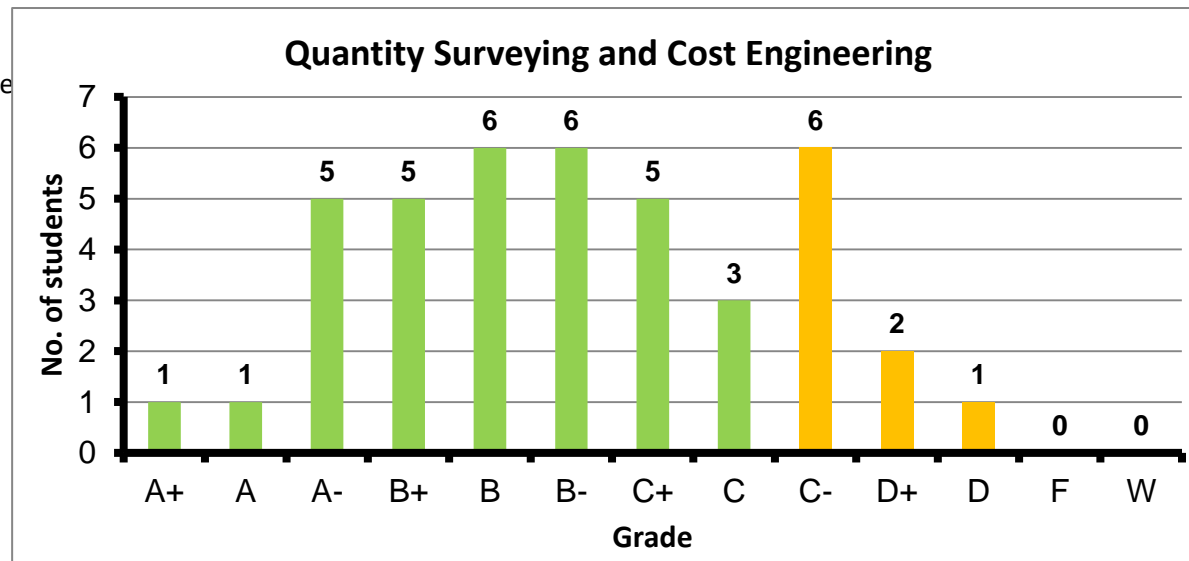
Course: Structural Systems and Optimization  
 Programs: STE  
 Code: STRN308  
 Student: 47  
 A+ to C: 96%  
 C- to D: 4%  
 F: 0  
 W: 1  
 Average: 3.41  
 Std Dev: 0.73



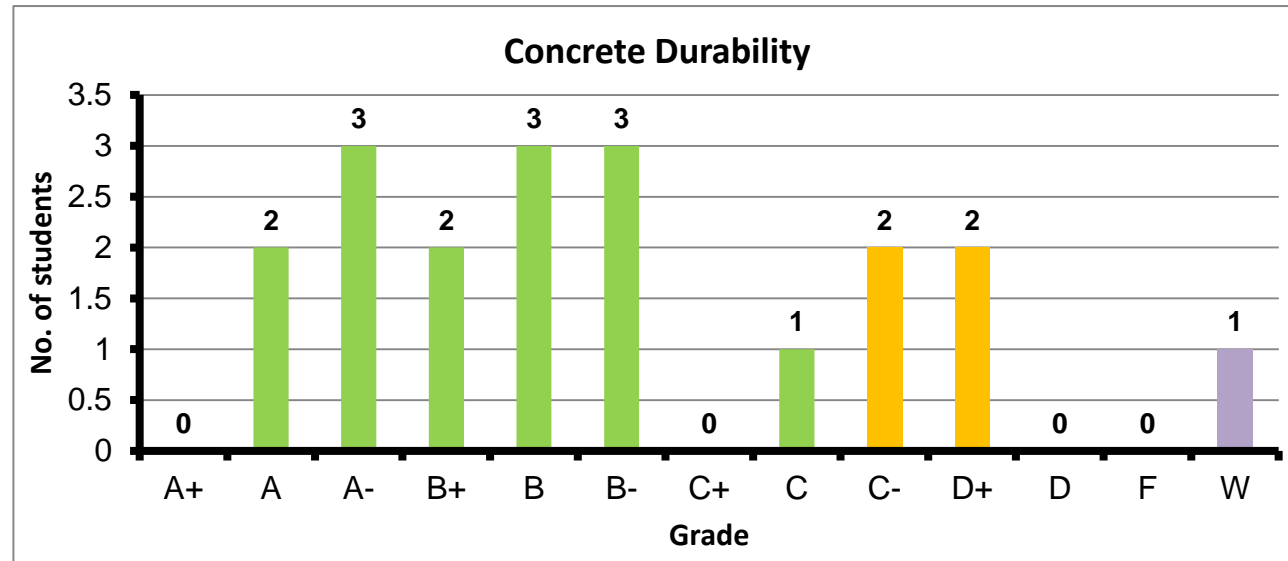
Course: Structural Dynamics and Vibrations  
 Programs: STE  
 Code: STRN408  
 Student: 25  
 A+ to C: 92%  
 C- to D: 8%  
 F: 0  
 W: 0  
 Average: 3.10  
 Std Dev: 0.82



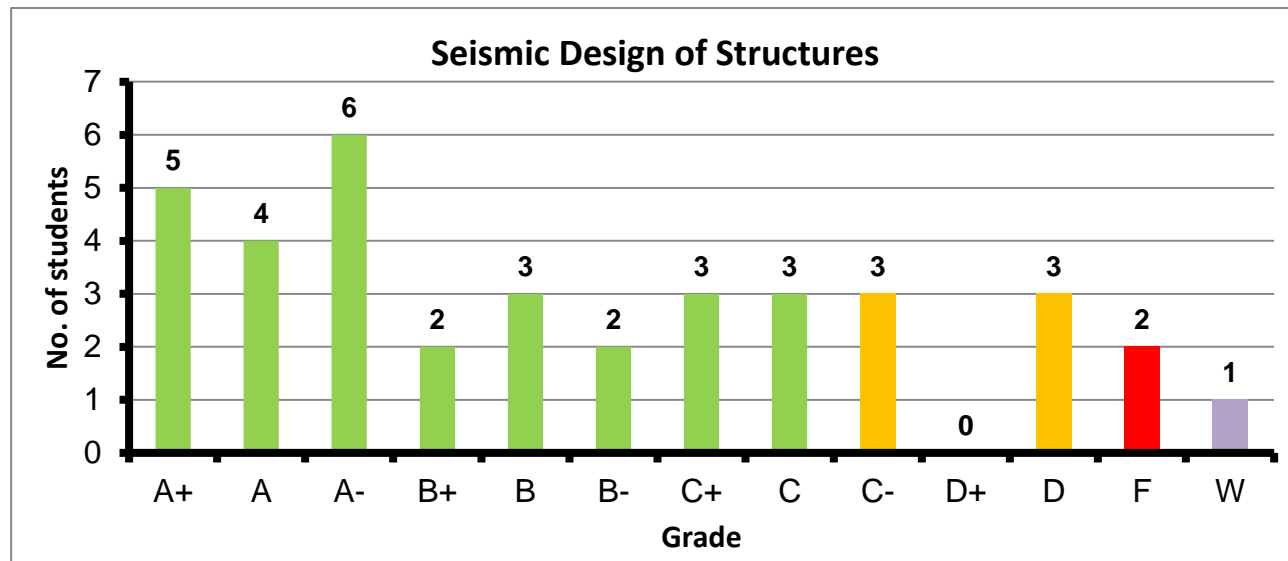
Course: Quantity Surveying and Cost Engine  
 Programs: STE  
 Code: STRN419  
 Student: 41  
 A+ to C: 78%  
 C- to D: 22%  
 F: 0  
 W: 0  
 Average: 2.65  
 Std Dev: 0.80



Course: Concrete Durability  
 Programs: STE  
 Code: STRN431  
 Student: 19  
 A+ to C: 78%  
 C- to D: 22%  
 F: 0  
 W: 1  
 Average: 2.83  
 Std Dev: 0.89



Course: Seismic Design of Structures  
 Programs: STE  
 Code: STRN437  
 Student: 37  
 A+ to C: 78%  
 C- to D: 17%  
 F: 2  
 W: 1  
 Average: 2.78  
 Std Dev: 1.20



Course: Special Topics in Structural Engineering  
Programs: STE  
Code: STRN461  
Student: 7  
A+ to C: 86%  
C- to D: 14%  
F: 0  
W: 0  
Average: 2.54  
Std Dev: 0.67

