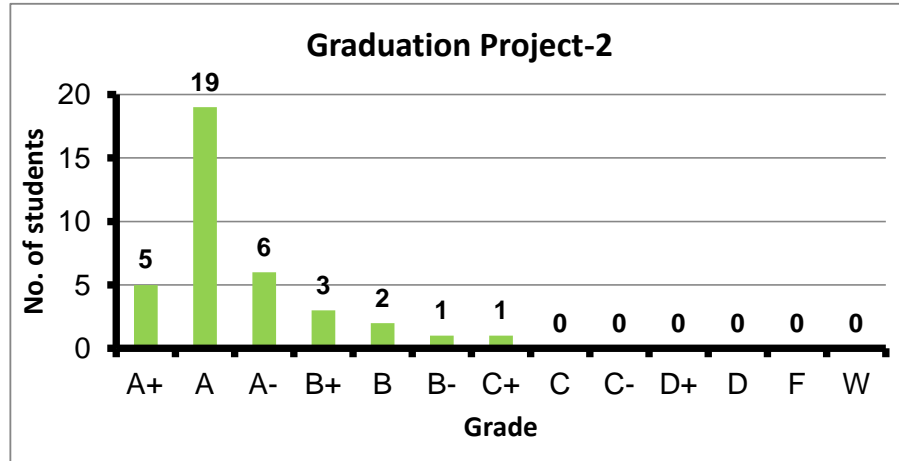
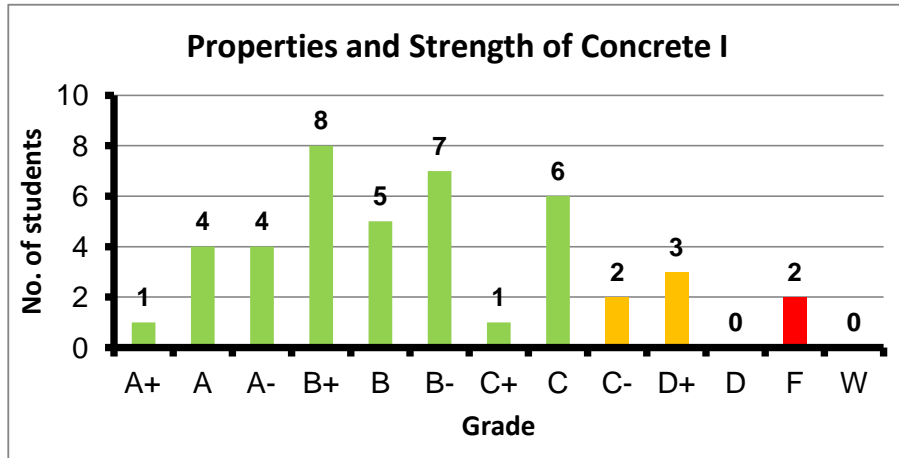


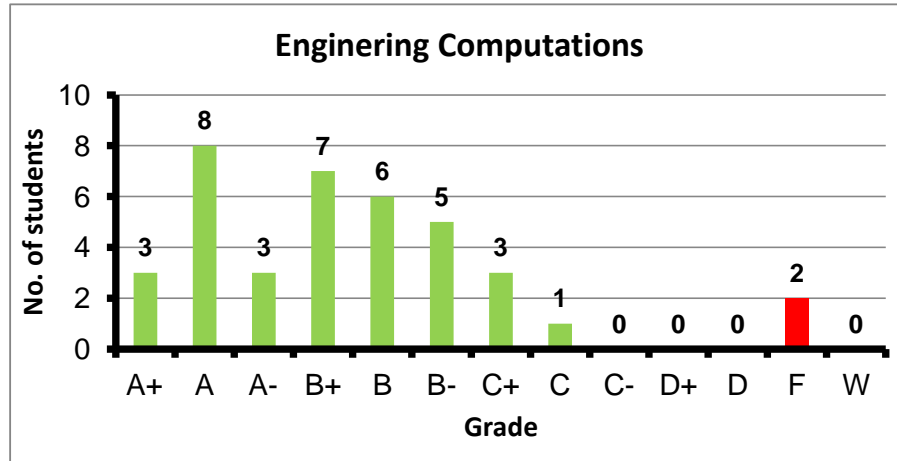
Course: Graduation Project-2
 Programs: STE
 Code: STEN481
 Student: 37
 A+ to C: 100%
 C- to D: 0%
 F: 0
 W: 0
 Average: 3.76
 Std Dev: 0.42



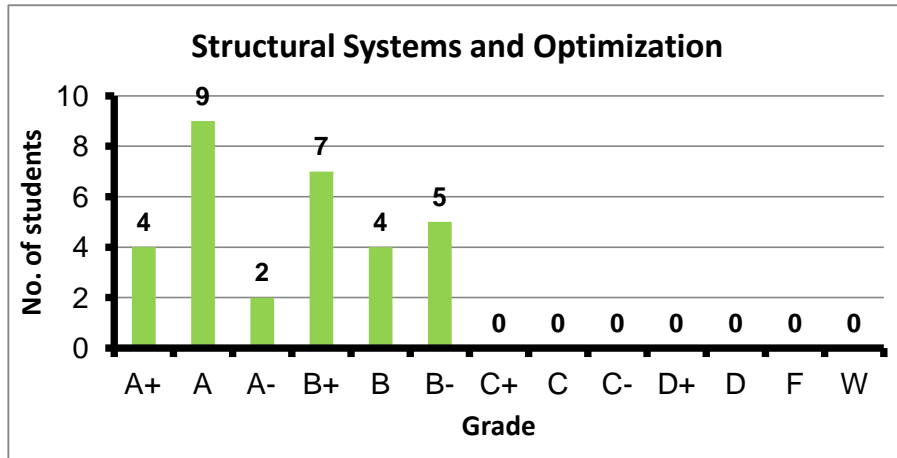
Course: Properties and Strength of Concrete I
 Programs: STE
 Code: STRN203
 Student: 43
 A+ to C: 84%
 C- to D: 12%
 F: 2
 W: 0
 Average: 2.72
 Std Dev: 0.99



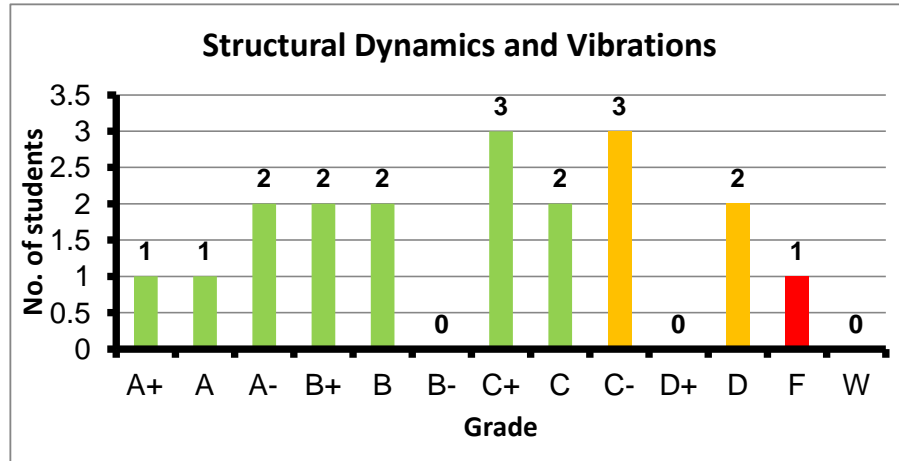
Course: Engineering Computations
 Programs: STE
 Code: STRN215
 Student: 38
 A+ to C: 95%
 C- to D: 0%
 F: 2
 W: 0
 Average: 3.12
 Std Dev: 0.95



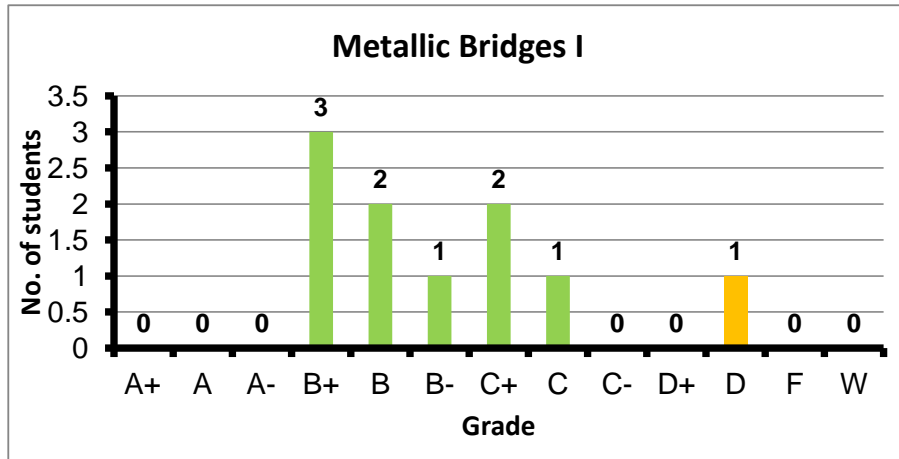
Course: Structural Systems and Optimization
 Programs: STE
 Code: STRN308
 Student: 31
 A+ to C: 100%
 C- to D: 0%
 F: 0
 W: 0
 Average: 3.48
 Std Dev: 0.51



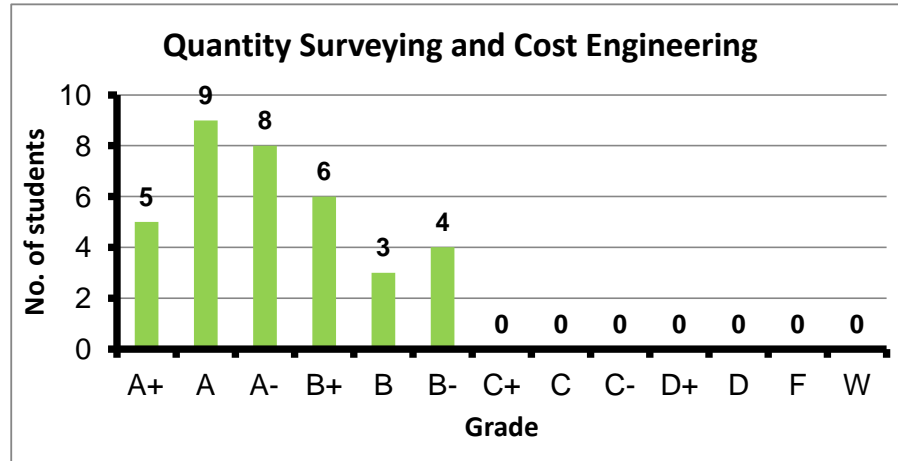
Course: Structural Dynamics and Vibrations
 Programs: STE
 Code: STRN408
 Student: 19
 A+ to C: 68%
 C- to D: 26%
 F: 1
 W: 0
 Average: 2.42
 Std Dev: 1.11



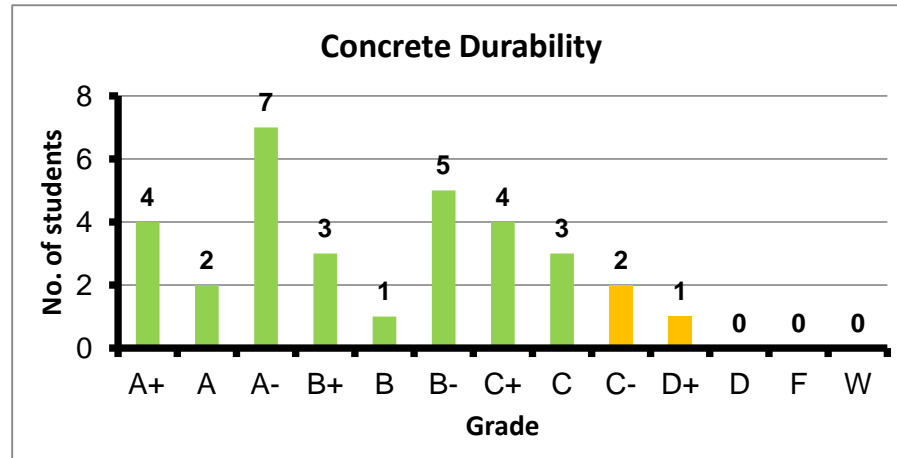
Course: Metallic Bridges I
 Programs: STE
 Code: STRN410
 Student: 10
 A+ to C: 90%
 C- to D: 10%
 F: 0
 W: 0
 Average: 2.62
 Std Dev: 0.74



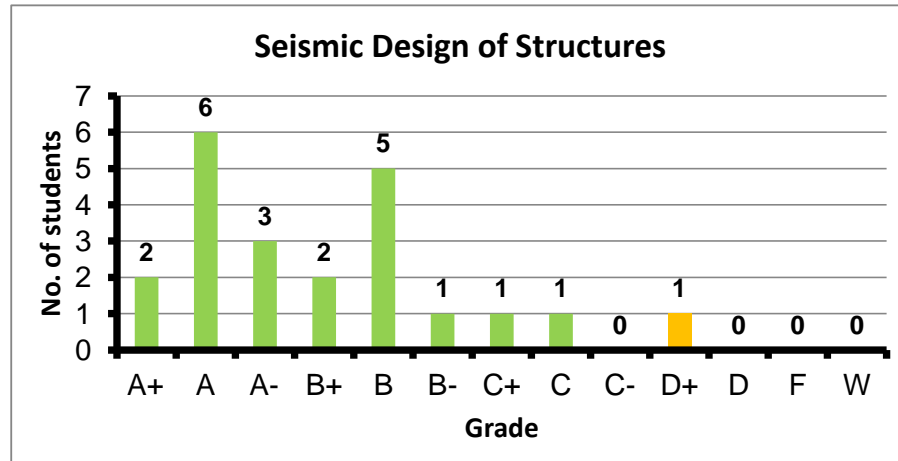
Course: Quantity Surveying and Cost Engineering
 Programs: STE
 Code: STRN419
 Student: 35
 A+ to C: 100%
 C- to D: 0%
 F: 0
 W: 0
 Average: 3.58
 Std Dev: 0.46



Course: Concrete Durability
 Programs: STE
 Code: STRN431
 Student: 32
 A+ to C: 91%
 C- to D: 9%
 F: 0
 W: 0
 Average: 3.01
 Std Dev: 0.83



Course: Seismic Design of Structures
 Programs: STE
 Code: STRN437
 Student: 22
 A+ to C: 95%
 C- to D: 5%
 F: 0
 W: 0
 Average: 3.32
 Std Dev: 0.75



Course: Special Topics in Structural Engineering
 Programs: STE
 Code: STRN461
 Student: 1
 A+ to C: 100%
 C- to D: 0%
 F: 0
 W: 0
 Average: 3.00
 Std Dev: #DIV/0!

