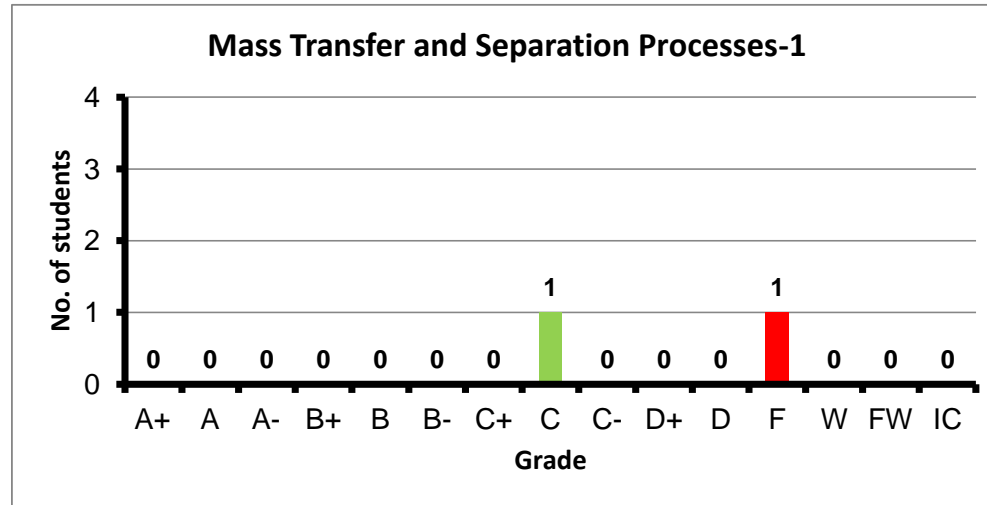
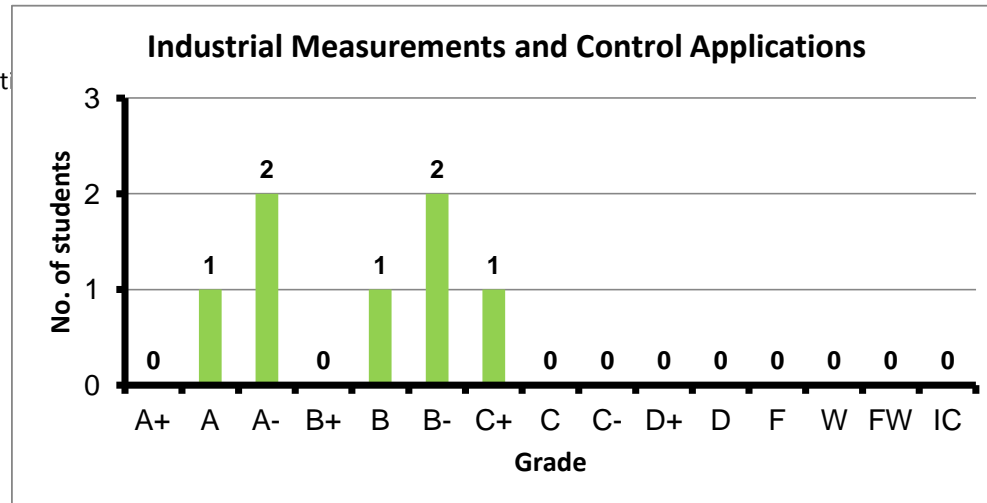


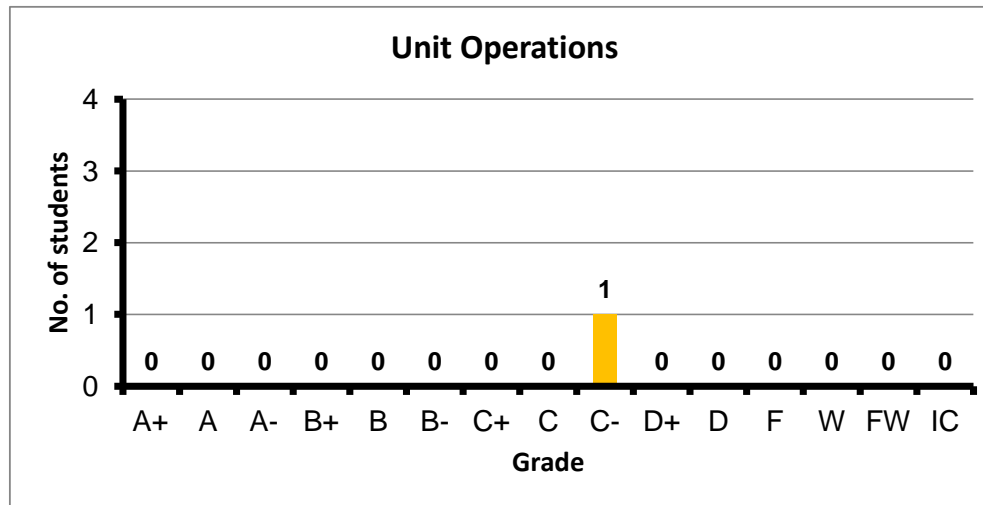
Course: Mass Transfer and Separation Processes-1  
 Programs: PPS  
 Code: CHEN301  
 Student: 2  
 A+ to C: 50%  
 C- to D: 0%  
 F: 1  
 W: 0  
 Average: 1.00  
 Std Dev: 2.00



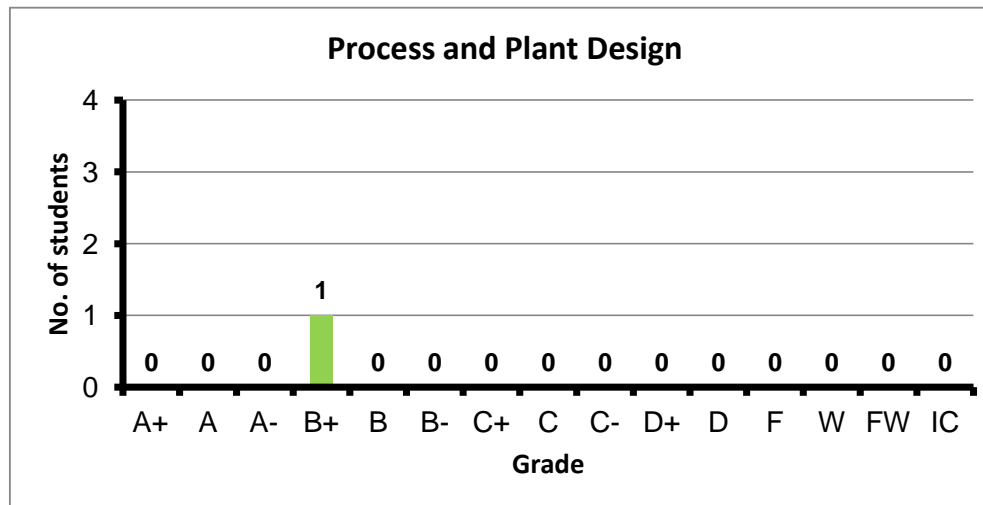
Course: Industrial Measurements and Control Applications  
 Programs: PPS  
 Code: CHEN303  
 Student: 7  
 A+ to C: 100%  
 C- to D: 0%  
 F: 0  
 W: 0  
 Average: 3.16  
 Std Dev: 3.47



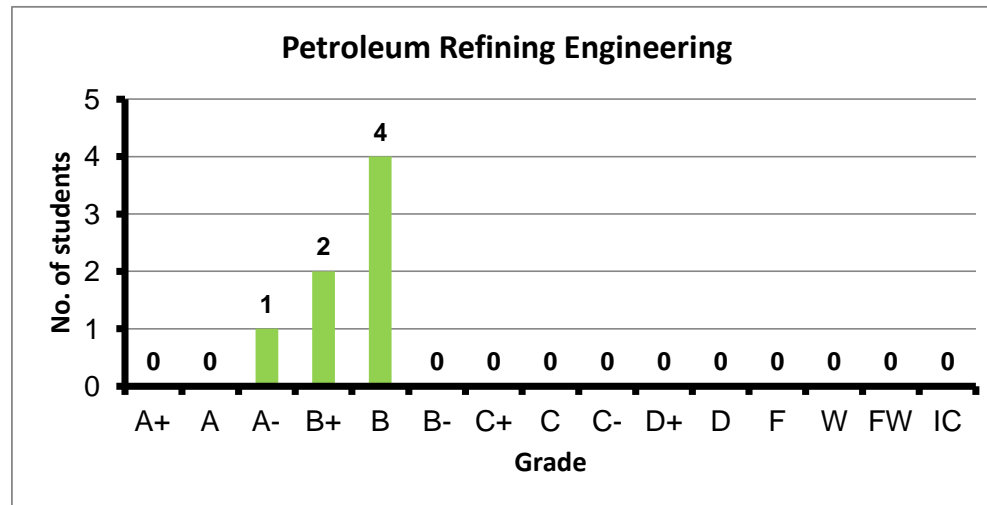
Course: Unit Operations  
 Programs: PPS  
 Code: CHEN304  
 Student: 1  
 A+ to C: 0%  
 C- to D: 100%  
 F: 0  
 W: 0  
 Average: 1.70  
 Std Dev: #DIV/0!



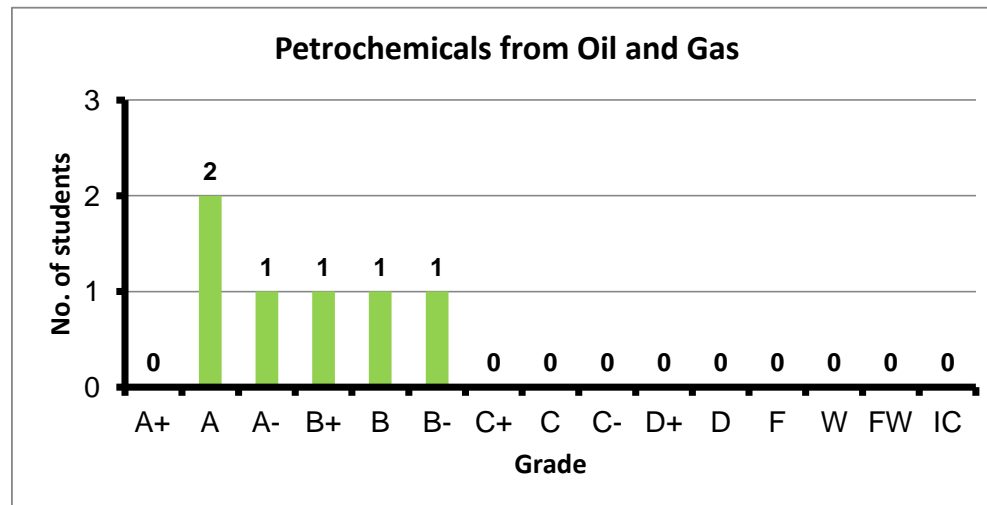
Course: Process and Plant Design  
 Programs: PPS  
 Code: CHEN306  
 Student: 1  
 A+ to C: 100%  
 C- to D: 0%  
 F: 0  
 W: 0  
 Average: 3.30  
 Std Dev: #DIV/0!



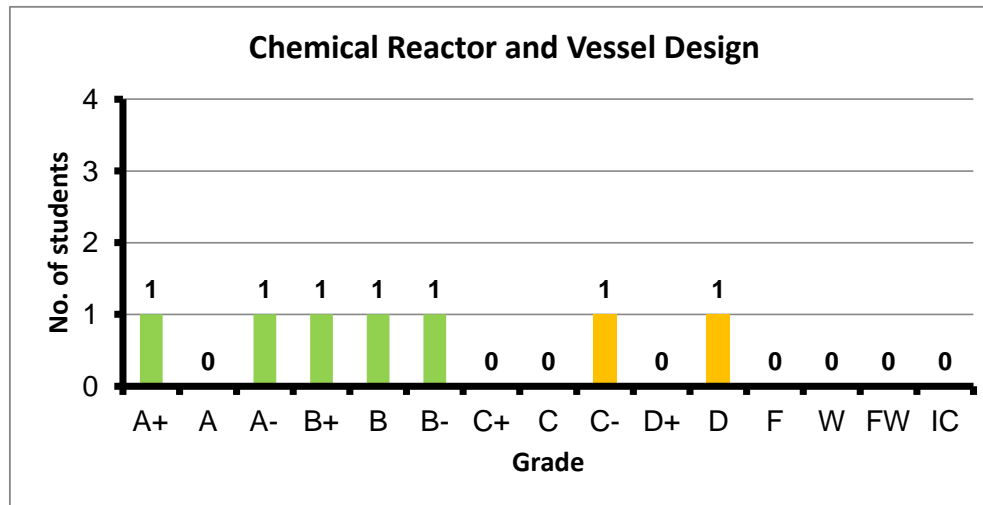
Course: Petroleum Refining Engineering  
 Programs: PPS  
 Code: CHEN401  
 Student: 7  
 A+ to C: 100%  
 C- to D: 0%  
 F: 0  
 W: 0  
 Average: 3.19  
 Std Dev: 3.45



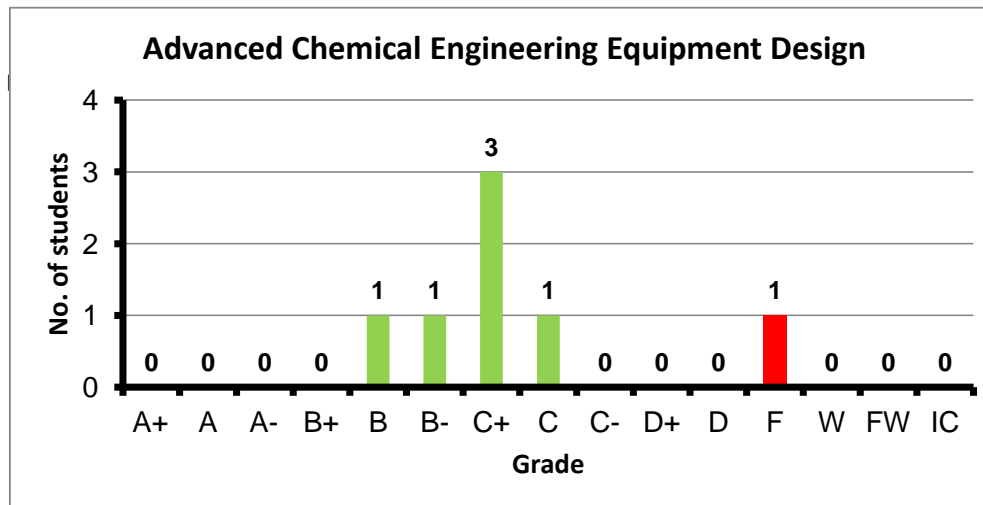
Course: Petrochemicals from Oil and Gas  
 Programs: PPS  
 Code: CHEN402  
 Student: 6  
 A+ to C: 100%  
 C- to D: 0%  
 F: 0  
 W: 0  
 Average: 3.45  
 Std Dev: 3.82



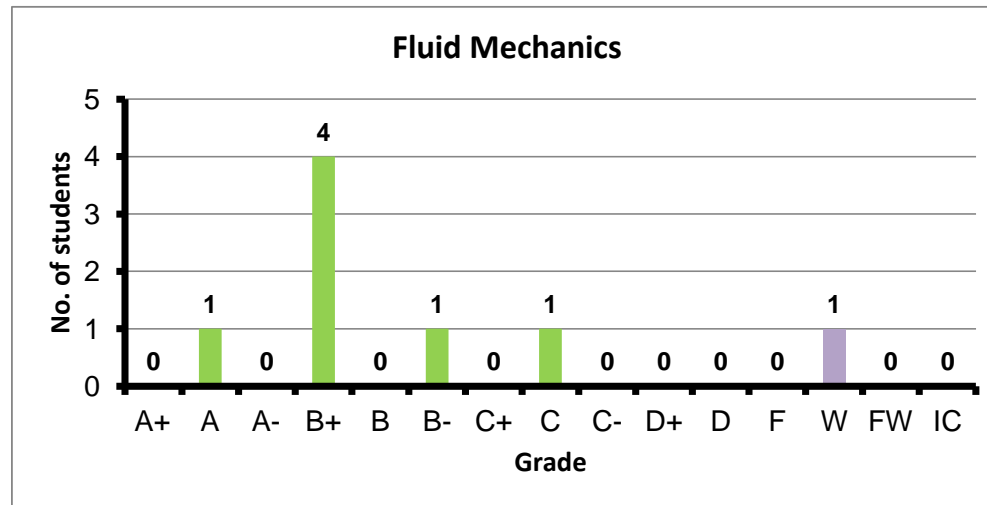
Course: Chemical Reactor and Vessel Design  
 Programs: PPS  
 Code: CHEN403  
 Student: 7  
 A+ to C: 71%  
 C- to D: 29%  
 F: 0  
 W: 0  
 Average: 2.77  
 Std Dev: 3.18



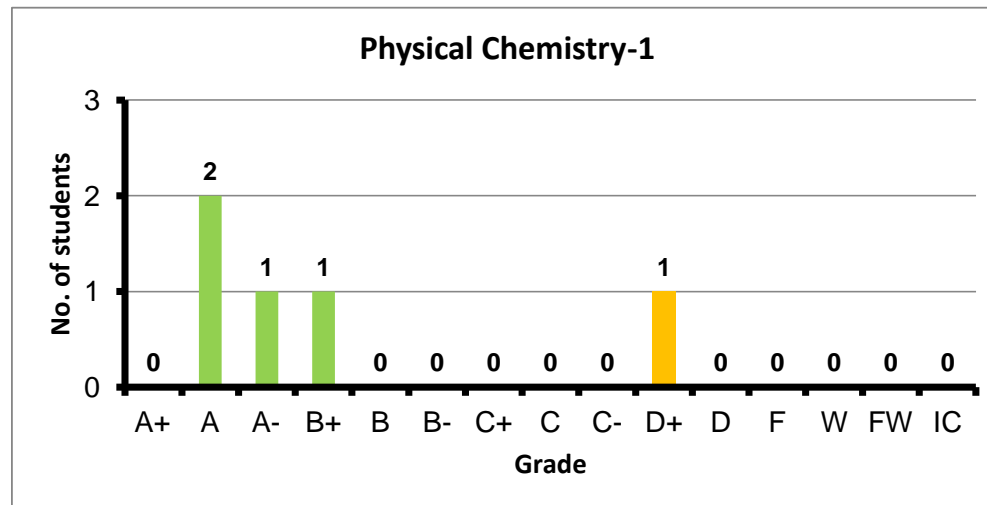
Course: Advanced Chemical Engineering Equipment Design  
 Programs: PPS  
 Code: CHEN407  
 Student: 7  
 A+ to C: 86%  
 C- to D: 0%  
 F: 1  
 W: 0  
 Average: 2.09  
 Std Dev: 2.45



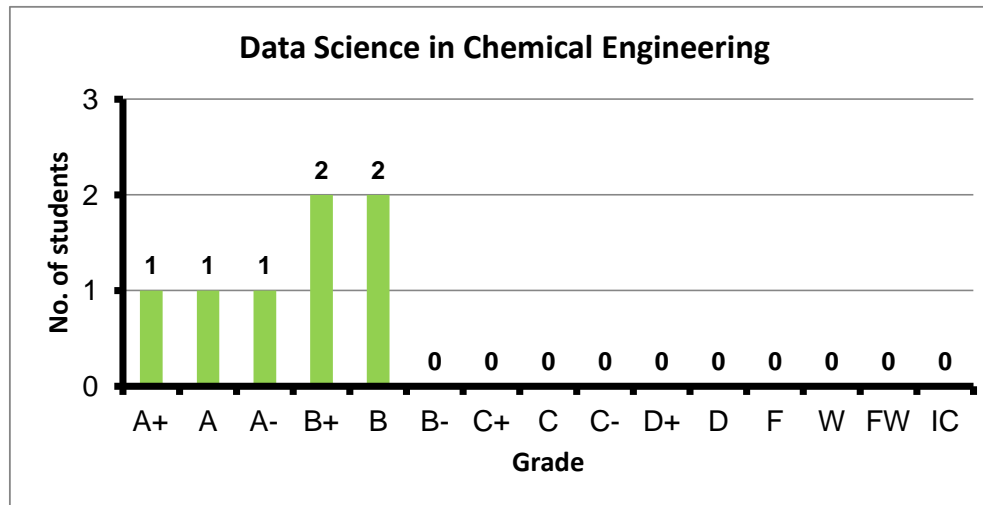
Course: Fluid Mechanics  
 Programs: PPS  
 Code: CHES201  
 Student: 8  
 A+ to C: 88%  
 C- to D: 0%  
 F: 0  
 W: 1  
 Average: 3.13  
 Std Dev: 3.30



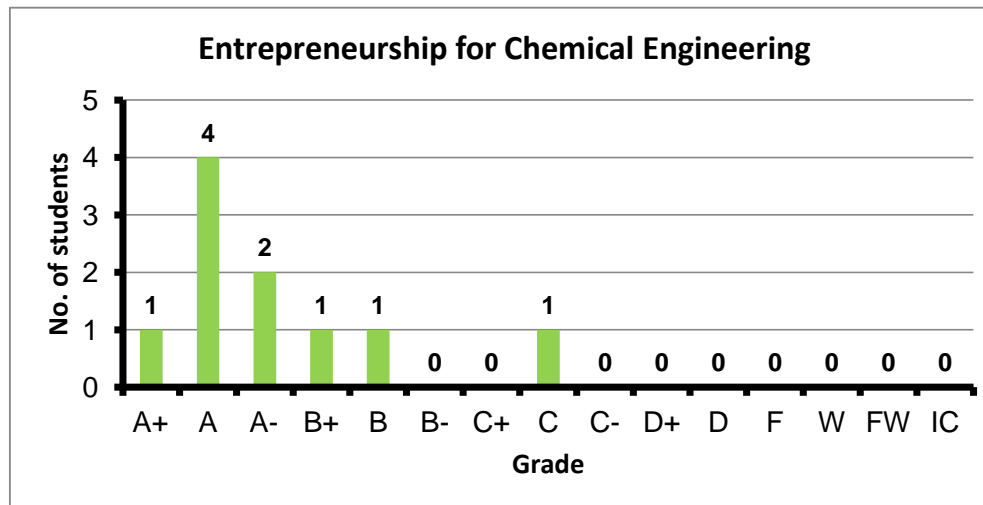
Course: Physical Chemistry-1  
 Programs: PPS  
 Code: CHES202  
 Student: 5  
 A+ to C: 80%  
 C- to D: 20%  
 F: 0  
 W: 0  
 Average: 3.28  
 Std Dev: 3.82



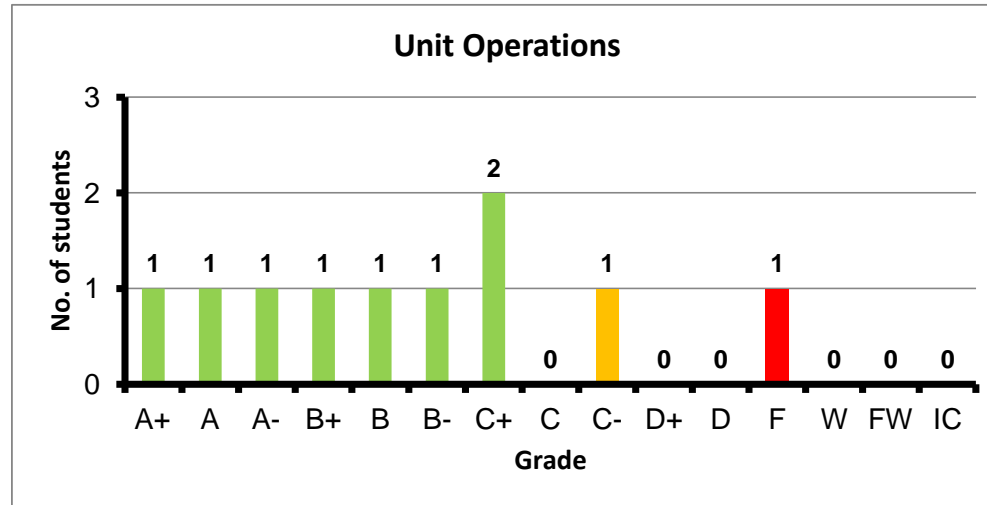
Course: Data Science in Chemical Engineering  
 Programs: PPS  
 Code: CHES210  
 Student: 7  
 A+ to C: 100%  
 C- to D: 0%  
 F: 0  
 W: 0  
 Average: 3.47  
 Std Dev: 3.77



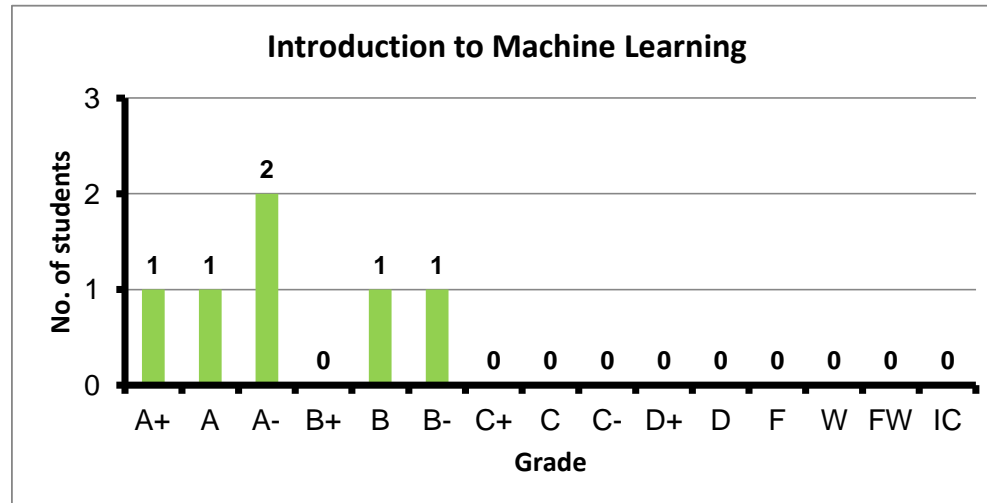
Course: Entrepreneurship for Chemical Engineering  
 Programs: PPS  
 Code: CHES221  
 Student: 10  
 A+ to C: 100%  
 C- to D: 0%  
 F: 0  
 W: 0  
 Average: 3.57  
 Std Dev: 3.82



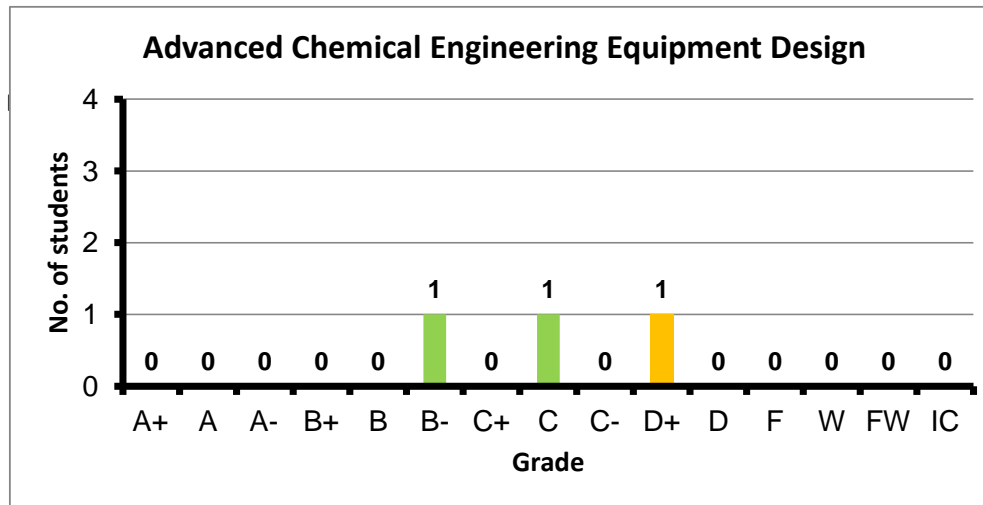
Course: Unit Operations  
 Programs: PPS  
 Code: CHES301  
 Student: 10  
 A+ to C: 80%  
 C- to D: 10%  
 F: 1  
 W: 0  
 Average: 2.70  
 Std Dev: 3.10



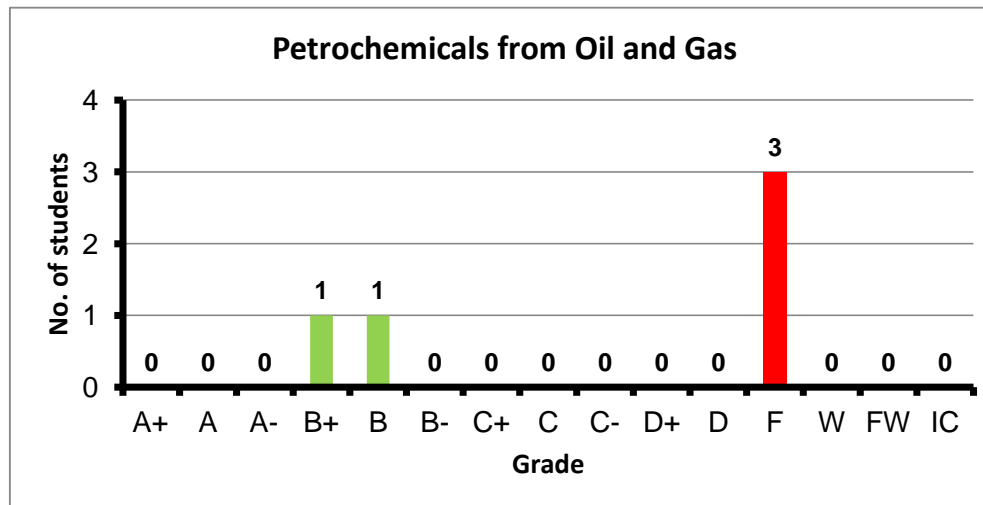
Course: Introduction to Machine Learning  
 Programs: PPS  
 Code: CHES302  
 Student: 6  
 A+ to C: 100%  
 C- to D: 0%  
 F: 0  
 W: 0  
 Average: 3.52  
 Std Dev: 3.89



Course: Advanced Chemical Engineering Equipment Design  
 Programs: PPS  
 Code: CHES401  
 Student: 3  
 A+ to C: 67%  
 C- to D: 33%  
 F: 0  
 W: 0  
 Average: 2.03  
 Std Dev: 2.55

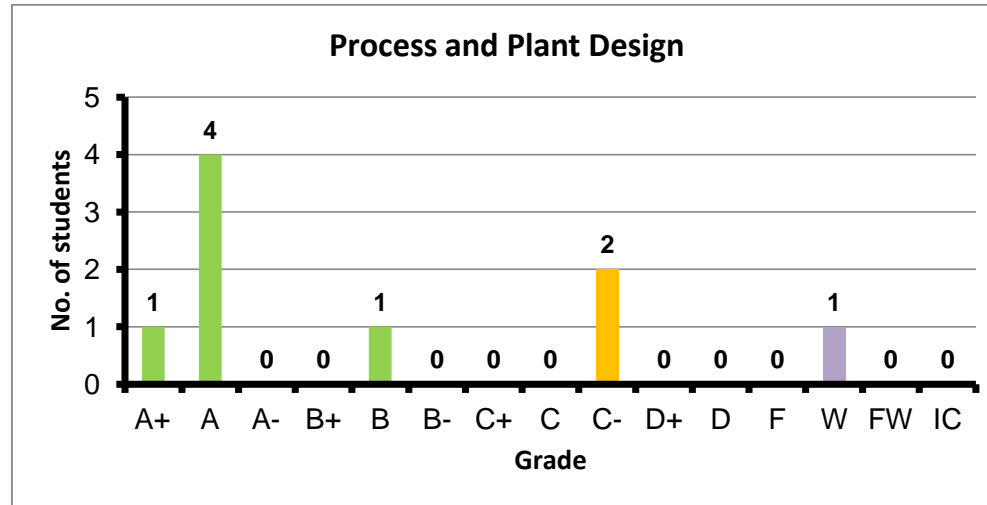


Course: Petrochemicals from Oil and Gas  
 Programs: PPS  
 Code: CHES402  
 Student: 5  
 A+ to C: 40%  
 C- to D: 0%  
 F: 3  
 W: 0  
 Average: 1.26  
 Std Dev: 2.23

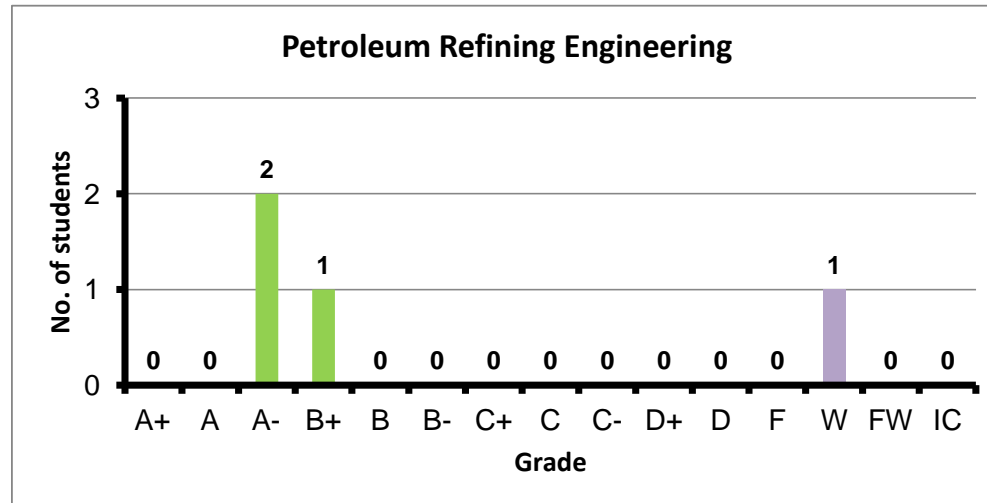




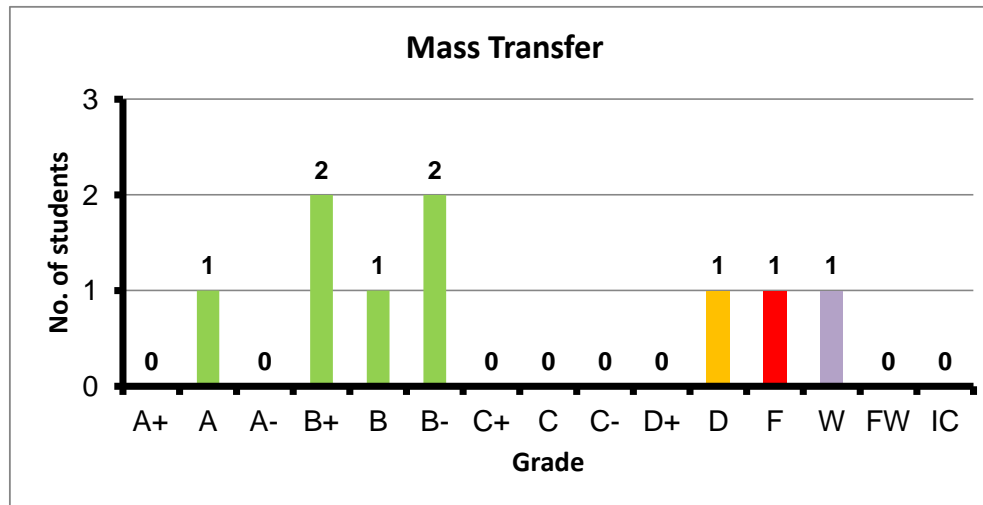
Course: Process and Plant Design  
 Programs: PPS  
 Code: CHES403  
 Student: 9  
 A+ to C: 67%  
 C- to D: 22%  
 F: 0  
 W: 1  
 Average: 3.30  
 Std Dev: 3.57



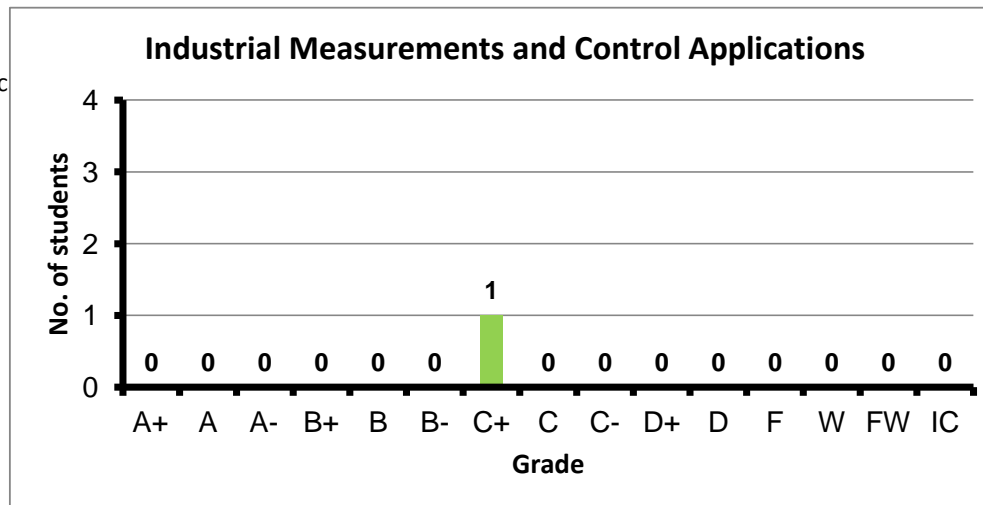
Course: Petroleum Refining Engineering  
 Programs: PPS  
 Code: CHES404  
 Student: 4  
 A+ to C: 75%  
 C- to D: 0%  
 F: 0  
 W: 1  
 Average: 3.57  
 Std Dev: 4.07



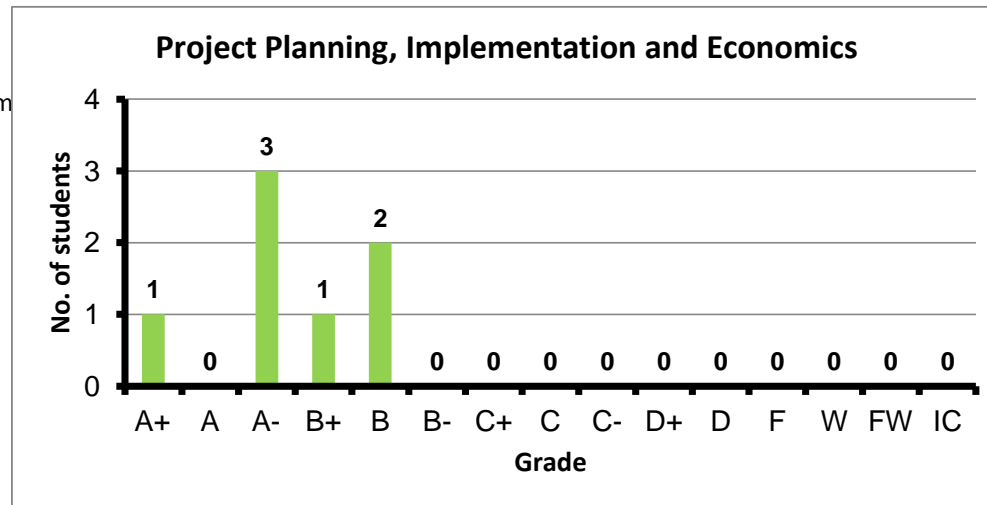
Course: Mass Transfer  
 Programs: PPS  
 Code: CHES405  
 Student: 9  
 A+ to C: 67%  
 C- to D: 11%  
 F: 1  
 W: 1  
 Average: 2.50  
 Std Dev: 2.88



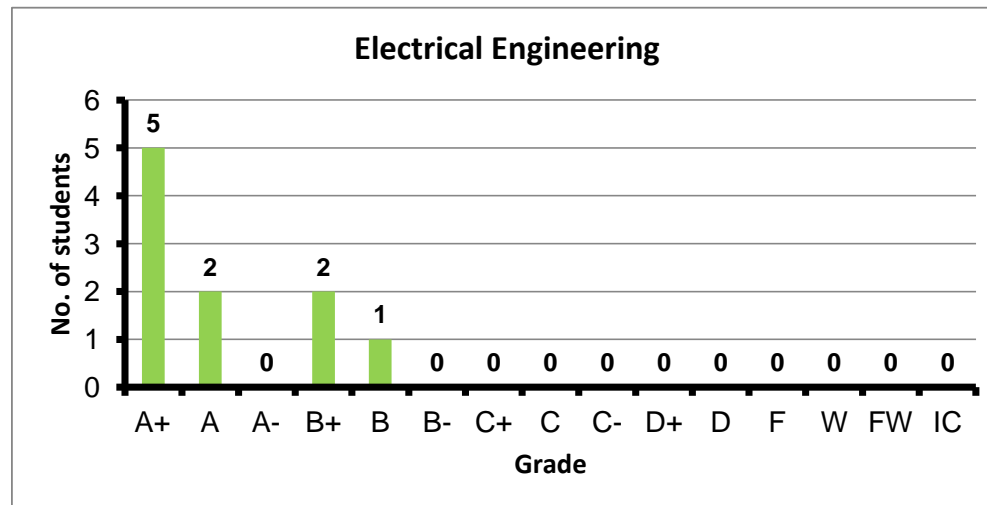
Course: Industrial Measurements and Control Applic  
 Programs: PPS  
 Code: CHES414  
 Student: 1  
 A+ to C: 100%  
 C- to D: 0%  
 F: 0  
 W: 0  
 Average: 2.30  
 Std Dev: #DIV/0!



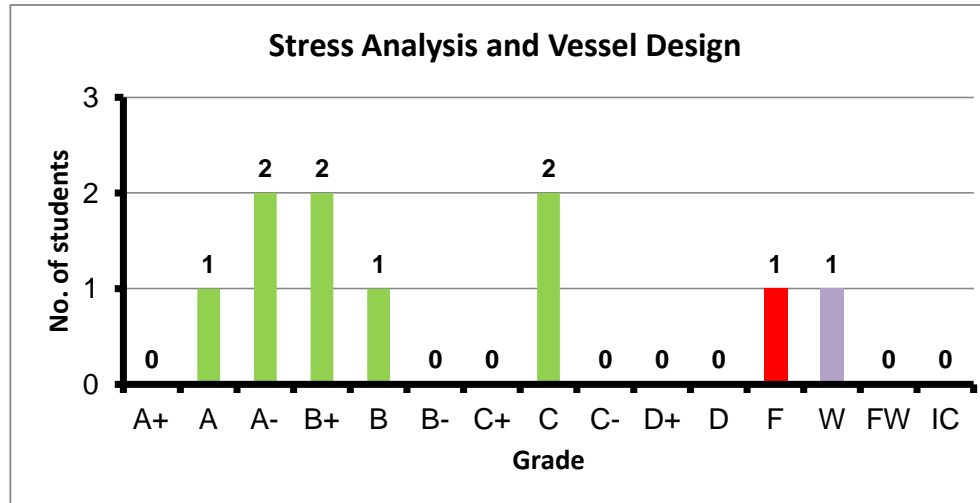
Course: Project Planning, Implementation and Economics  
 Programs: PPS  
 Code: GENN401  
 Student: 7  
 A+ to C: 100%  
 C- to D: 0%  
 F: 0  
 W: 0  
 Average: 3.49  
 Std Dev: 3.79



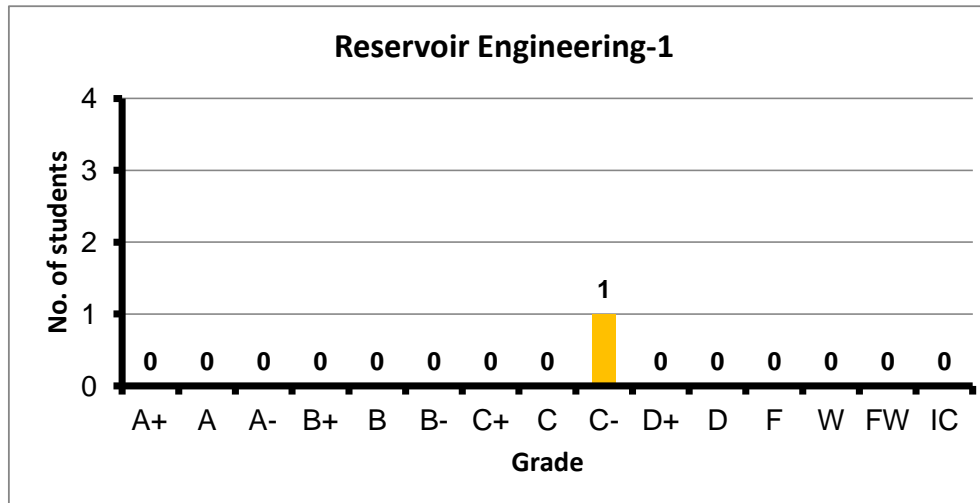
Course: Electrical Engineering  
 Programs: PPS  
 Code: INTS201  
 Student: 10  
 A+ to C: 100%  
 C- to D: 0%  
 F: 0  
 W: 0  
 Average: 3.76  
 Std Dev: 3.98



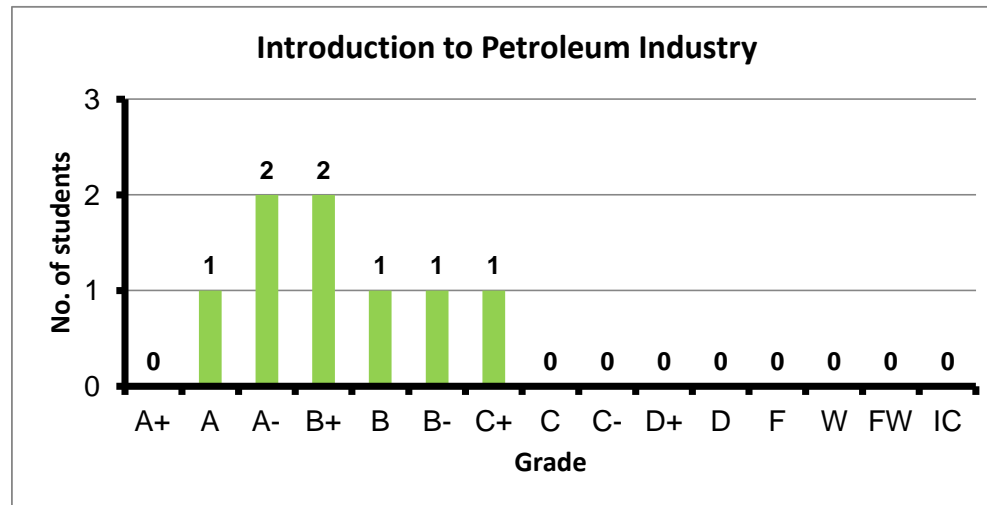
Course: Stress Analysis and Vessel Design  
 Programs: PPS  
 Code: MDPS301  
 Student: 10  
 A+ to C: 80%  
 C- to D: 0%  
 F: 1  
 W: 1  
 Average: 2.78  
 Std Dev: 3.11



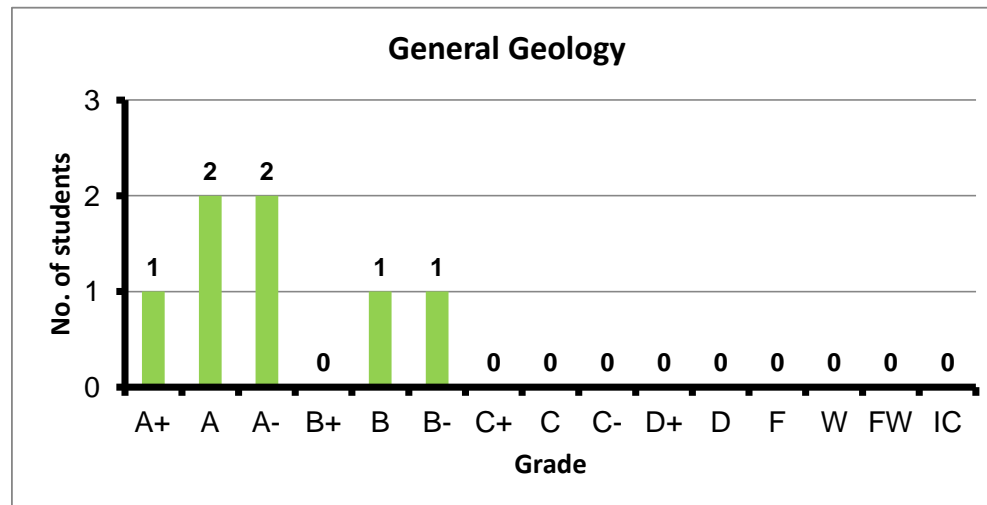
Course: Reservoir Engineering-1  
 Programs: PPS  
 Code: PEN302  
 Student: 1  
 A+ to C: 0%  
 C- to D: 100%  
 F: 0  
 W: 0  
 Average: 1.70  
 Std Dev: #DIV/0!



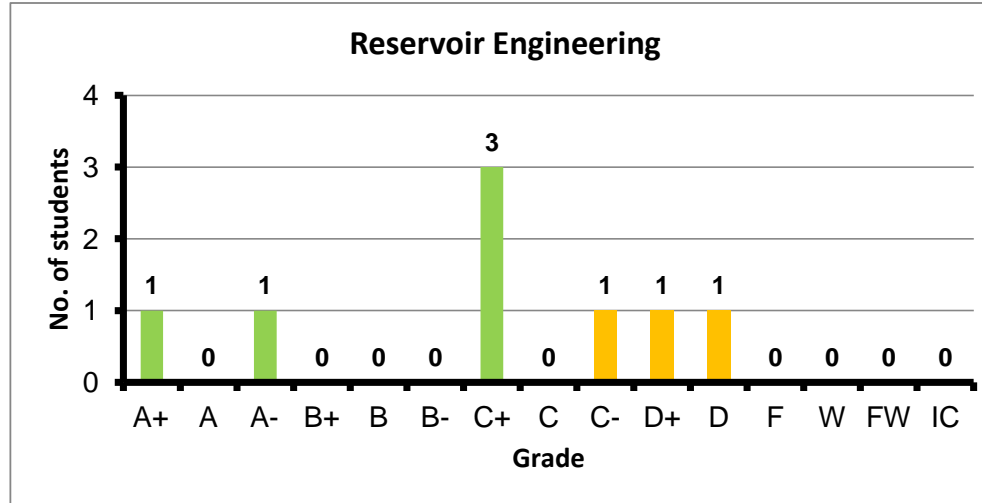
Course: Introduction to Petroleum Industry  
 Programs: PPS  
 Code: PES201  
 Student: 8  
 A+ to C: 100%  
 C- to D: 0%  
 F: 0  
 W: 0  
 Average: 3.25  
 Std Dev: 3.52



Course: General Geology  
 Programs: PPS  
 Code: PES202  
 Student: 7  
 A+ to C: 100%  
 C- to D: 0%  
 F: 0  
 W: 0  
 Average: 3.59  
 Std Dev: 3.91



Course: Reservoir Engineering  
 Programs: PPS  
 Code: PES301  
 Student: 8  
 A+ to C: 63%  
 C- to D: 38%  
 F: 0  
 W: 0  
 Average: 2.34  
 Std Dev: 2.70



Course: Petroleum Production Engineering  
 Programs: PPS  
 Code: PES401  
 Student: 5  
 A+ to C: 60%  
 C- to D: 40%  
 F: 0  
 W: 0  
 Average: 1.66  
 Std Dev: 1.96

