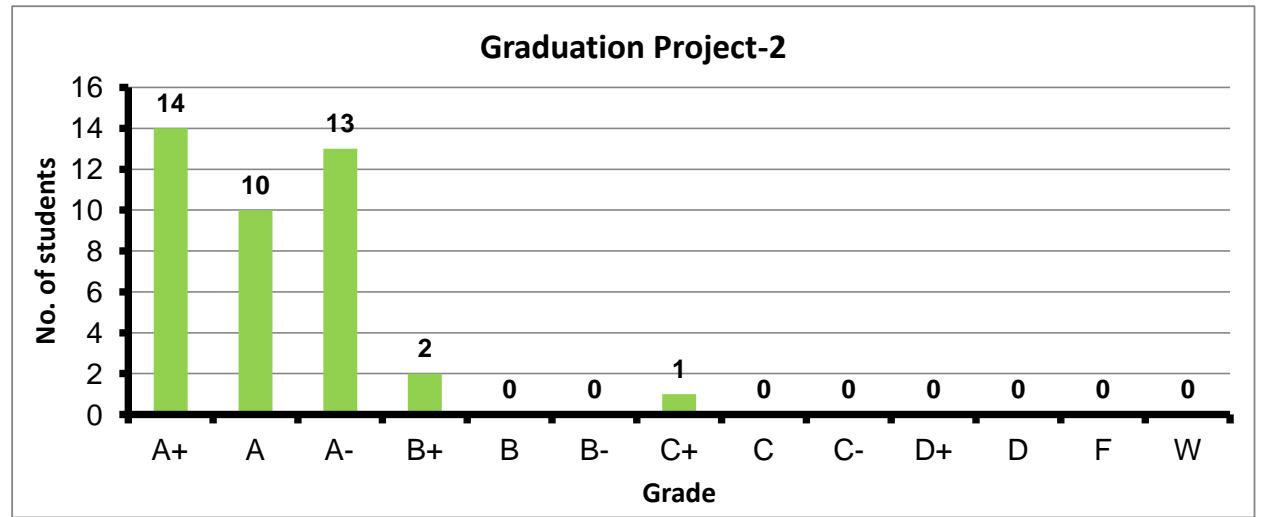
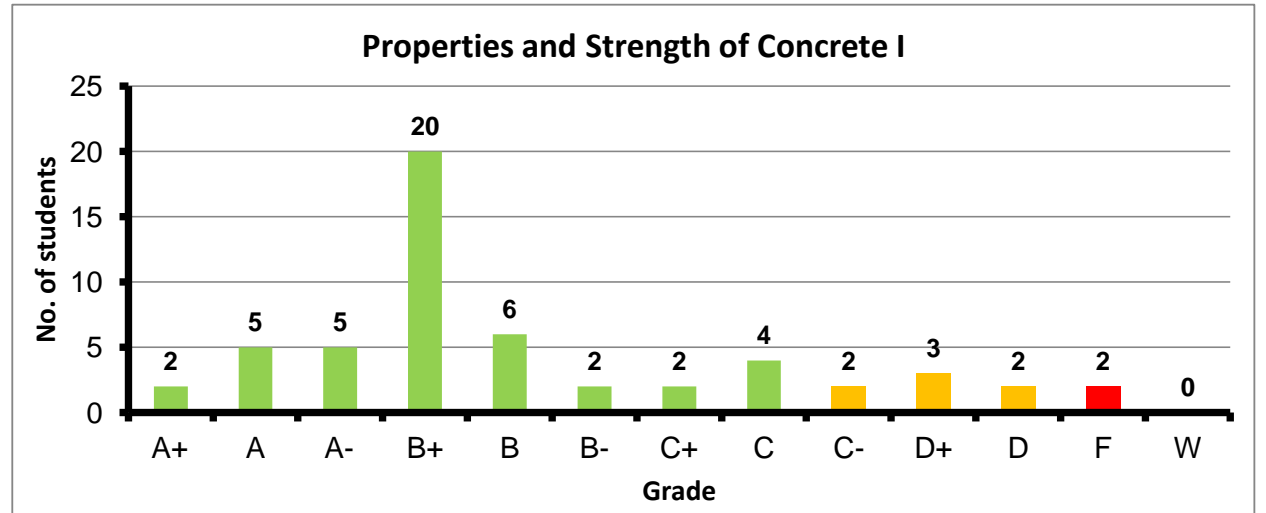


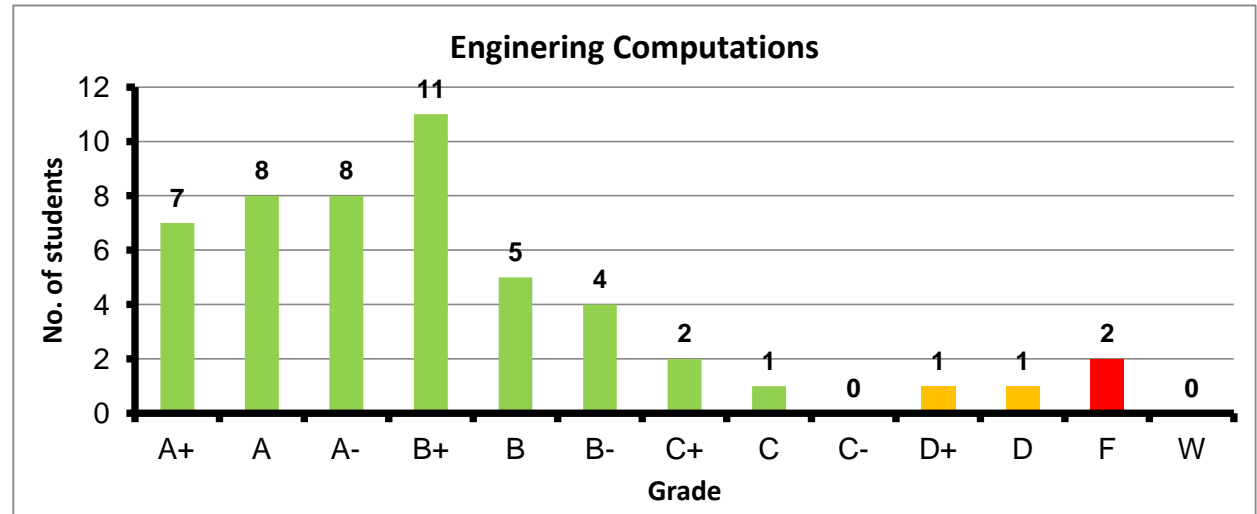
Course: Graduation Project-2
 Programs: STE
 Code: STEN481
 Student: 40
 A+ to C: 100%
 C- to D: 0%
 F: 0
 W: 0
 Average: 3.83
 Std Dev: 0.31



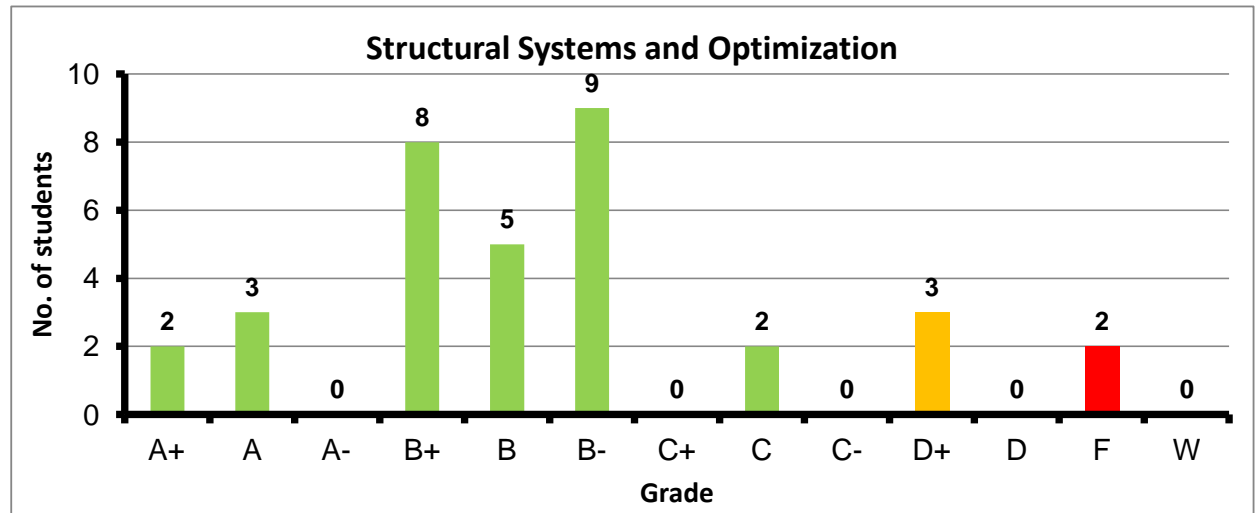
Course: Properties and Strength of Concrete I
 Programs: STE
 Code: STRN203
 Student: 55
 A+ to C: 84%
 C- to D: 13%
 F: 2
 W: 0
 Average: 2.87
 Std Dev: 1.00



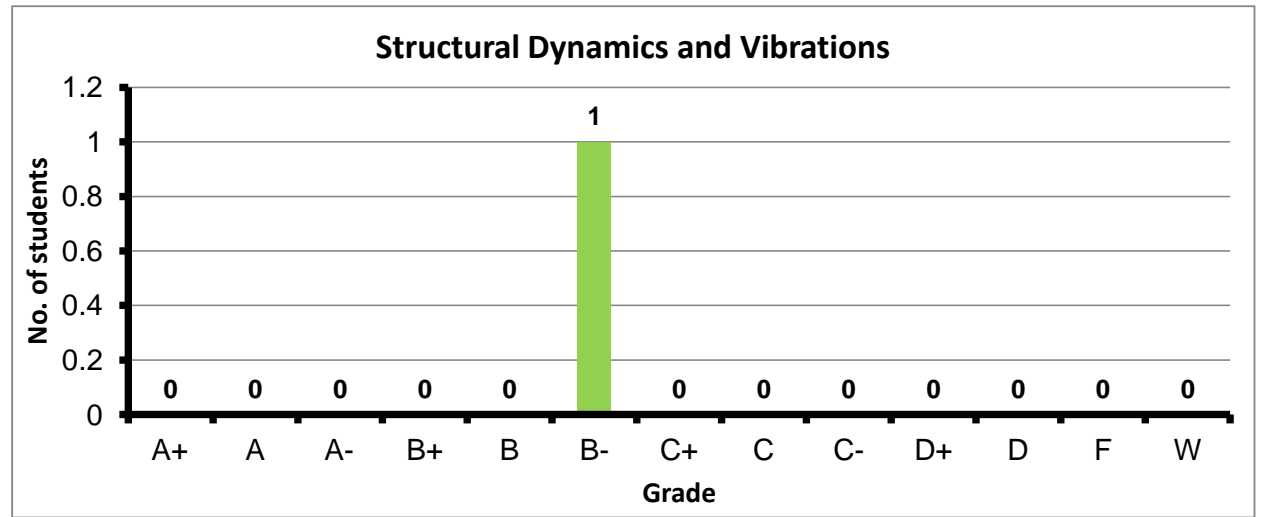
Course: Engineering Computations
 Programs: STE
 Code: STRN215
 Student: 50
 A+ to C: 92%
 C- to D: 4%
 F: 2
 W: 0
 Average: 3.21
 Std Dev: 0.96



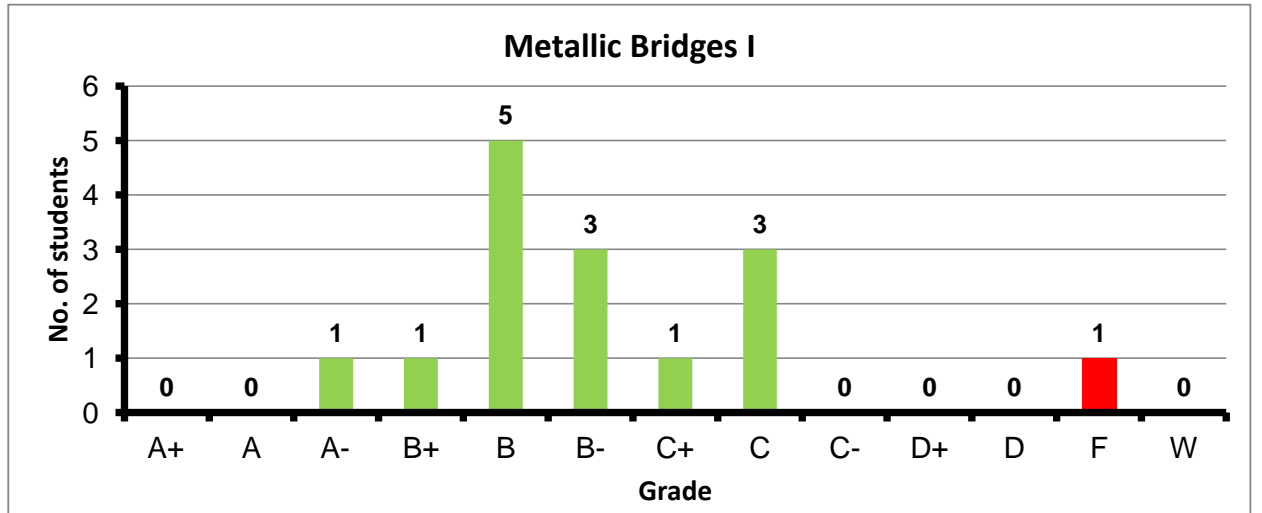
Course: Structural Systems and Optimization
 Programs: STE
 Code: STRN308
 Student: 34
 A+ to C: 85%
 C- to D: 9%
 F: 2
 W: 0
 Average: 2.76
 Std Dev: 1.00



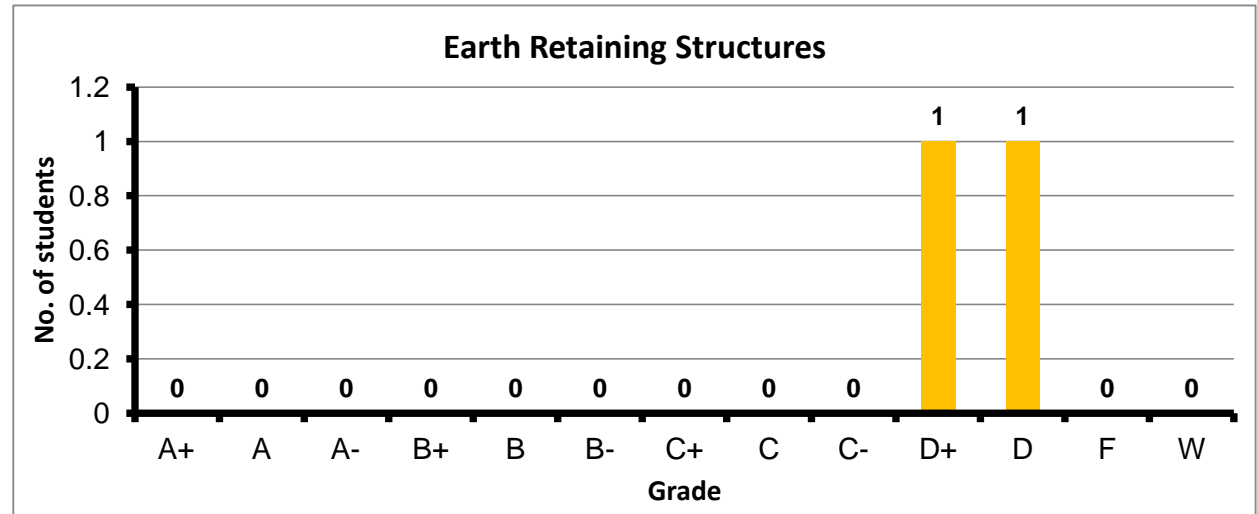
Course: Structural Dynamics and Vibrations
 Programs: STE
 Code: STRN408
 Student: 1
 A+ to C: 100%
 C- to D: 0%
 F: 0
 W: 0
 Average: 2.70
 Std Dev: #DIV/0!



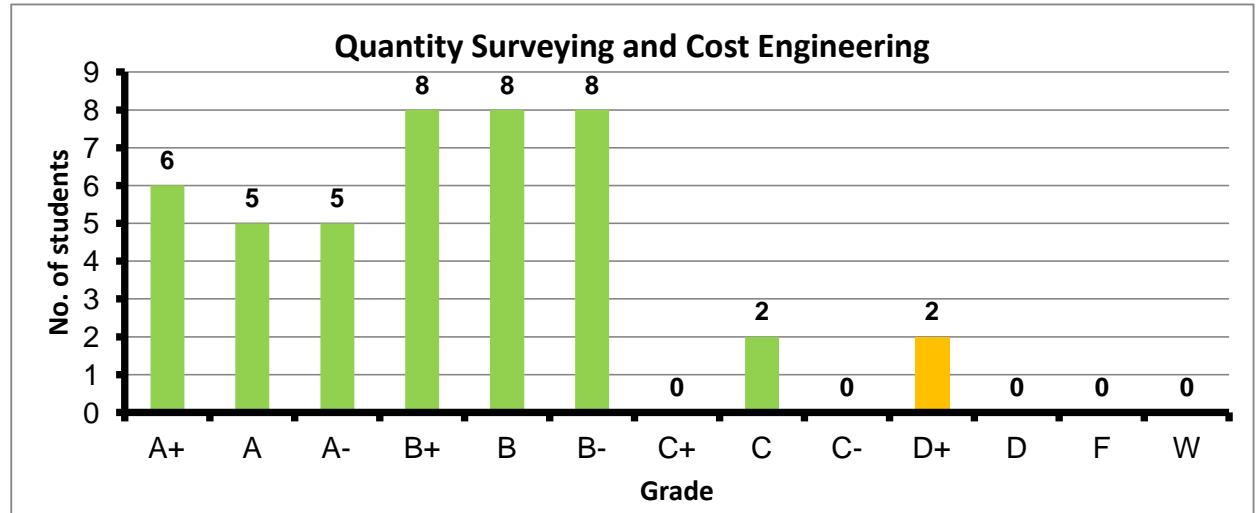
Course: Metallic Bridges I
 Programs: STE
 Code: STRN410
 Student: 15
 A+ to C: 93%
 C- to D: 0%
 F: 1
 W: 0
 Average: 2.56
 Std Dev: 0.86



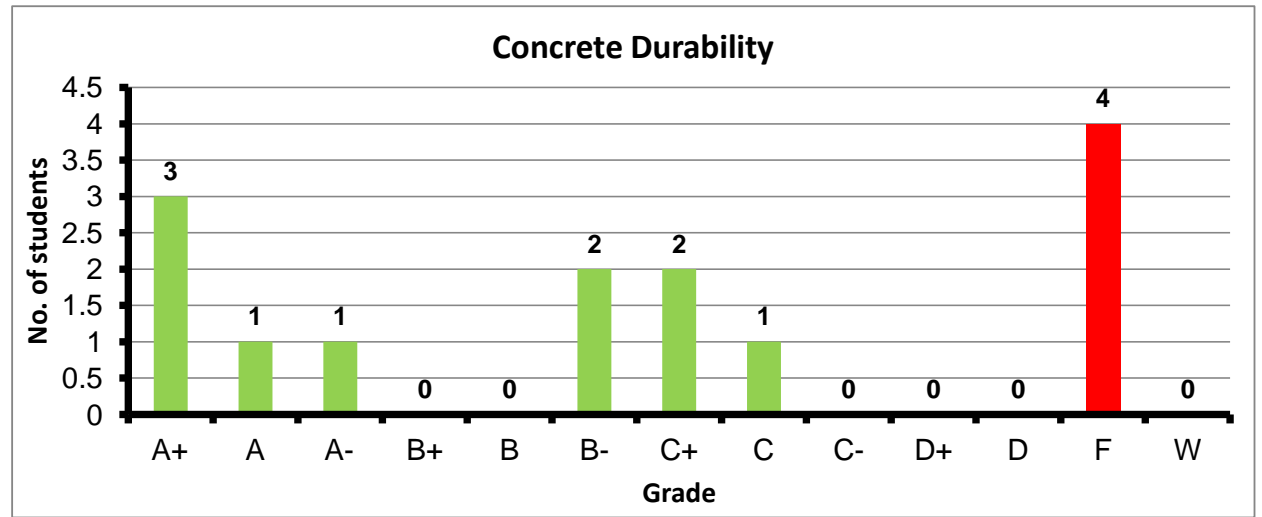
Course: Earth Retaining Structures
 Programs: STE
 Code: STRN413
 Student: 2
 A+ to C: 0%
 C- to D: 100%
 F: 0
 W: 0
 Average: 1.20
 Std Dev: 0.22



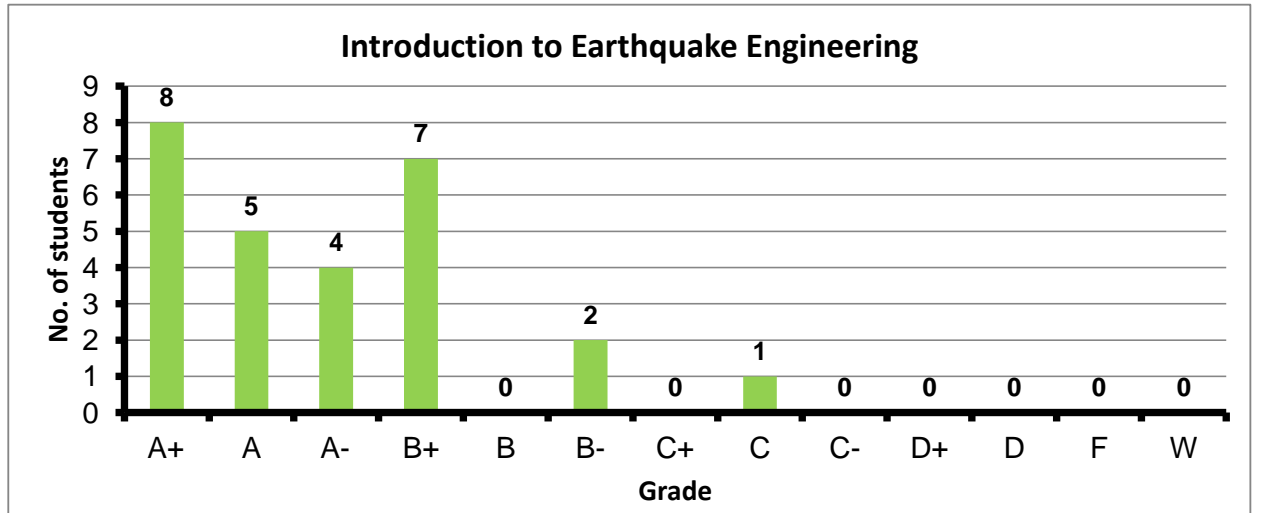
Course: Quantity Surveying and Cost Engineering
 Programs: STE
 Code: STRN419
 Student: 44
 A+ to C: 95%
 C- to D: 5%
 F: 0
 W: 0
 Average: 3.21
 Std Dev: 0.70



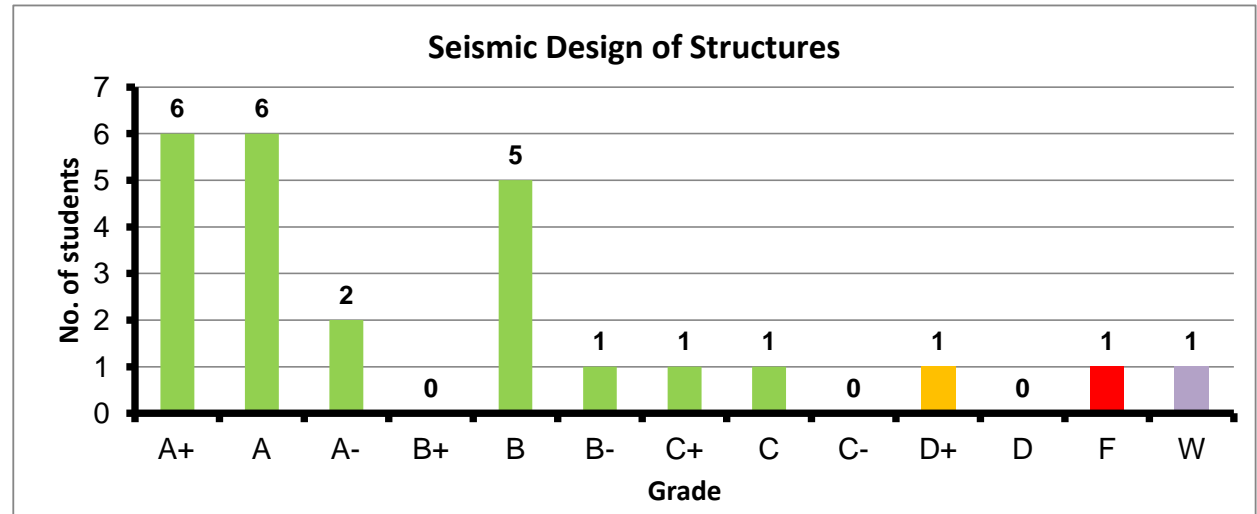
Course: Concrete Durability
 Programs: STE
 Code: STRN431
 Student: 14
 A+ to C: 71%
 C- to D: 0%
 F: 4
 W: 0
 Average: 2.26
 Std Dev: 1.64



Course: Introduction to Earthquake Engineering
 Programs: STE
 Code: STRN435
 Student: 27
 A+ to C: 100%
 C- to D: 0%
 F: 0
 W: 0
 Average: 3.60
 Std Dev: 0.52



Course: Seismic Design of Structures
 Programs: STE
 Code: STRN437
 Student: 25
 A+ to C: 92%
 C- to D: 4%
 F: 1
 W: 1
 Average: 3.28
 Std Dev: 1.03



Course: Special Topics in Structural Engineering
 Programs: STE
 Code: STRN461
 Student: 11
 A+ to C: 91%
 C- to D: 9%
 F: 0
 W: 0
 Average: 3.41
 Std Dev: 0.68

