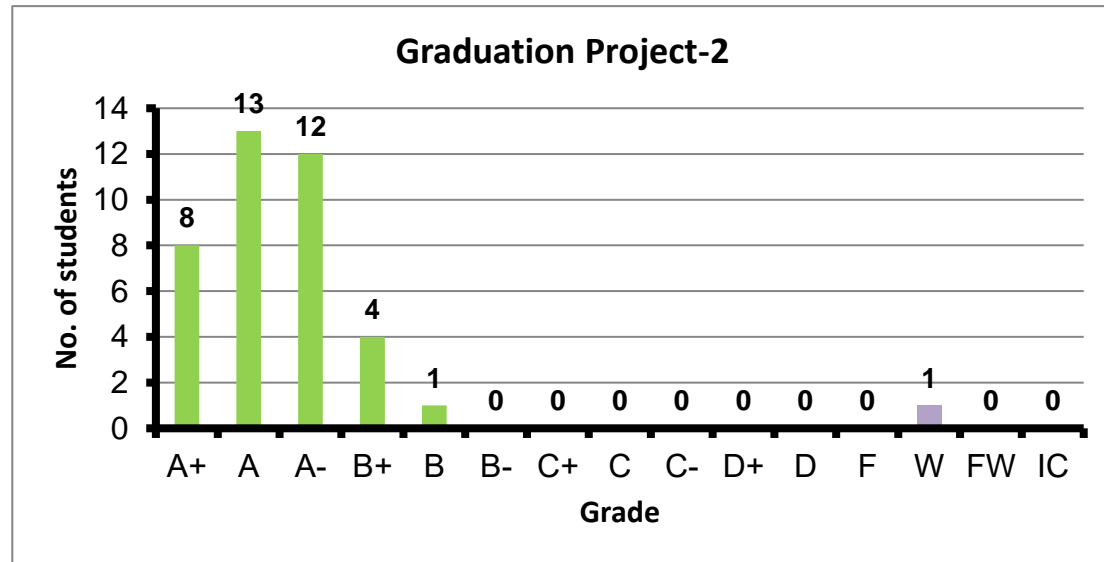
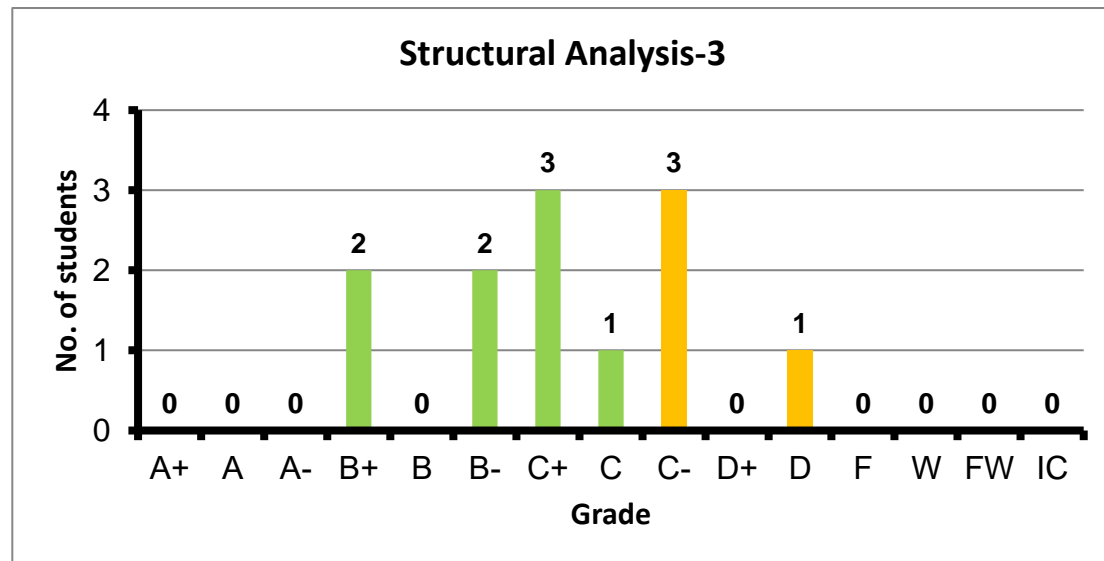


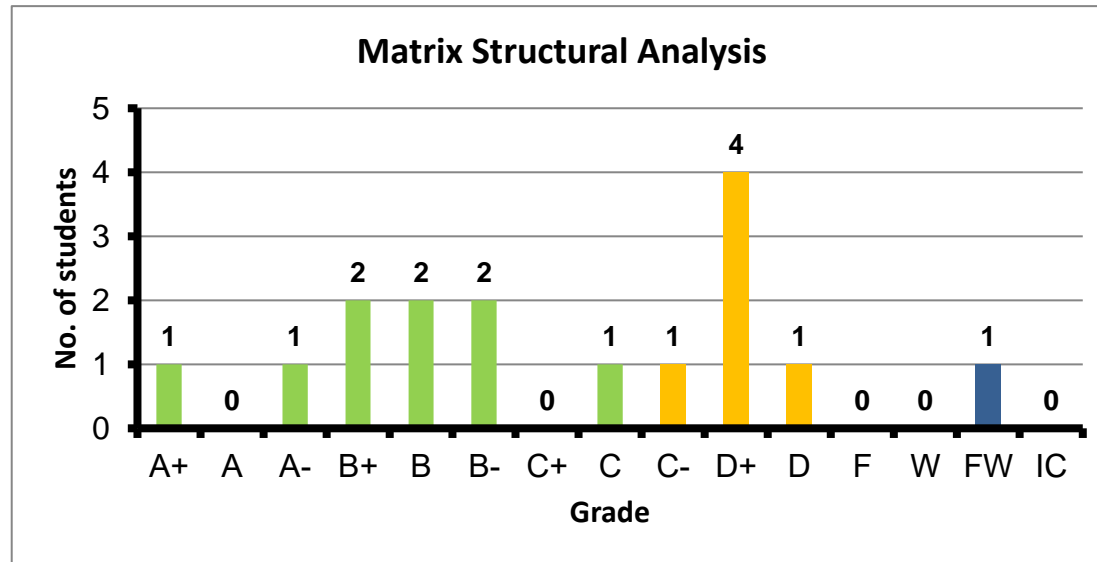
Course: Graduation Project-2  
 Programs: STE  
 Code: STEN481  
 Student: 39  
 A+ to C: 97%  
 C- to D: 0%  
 F: 0  
 W: 1  
 Average: 3.81  
 Std Dev: 3.84



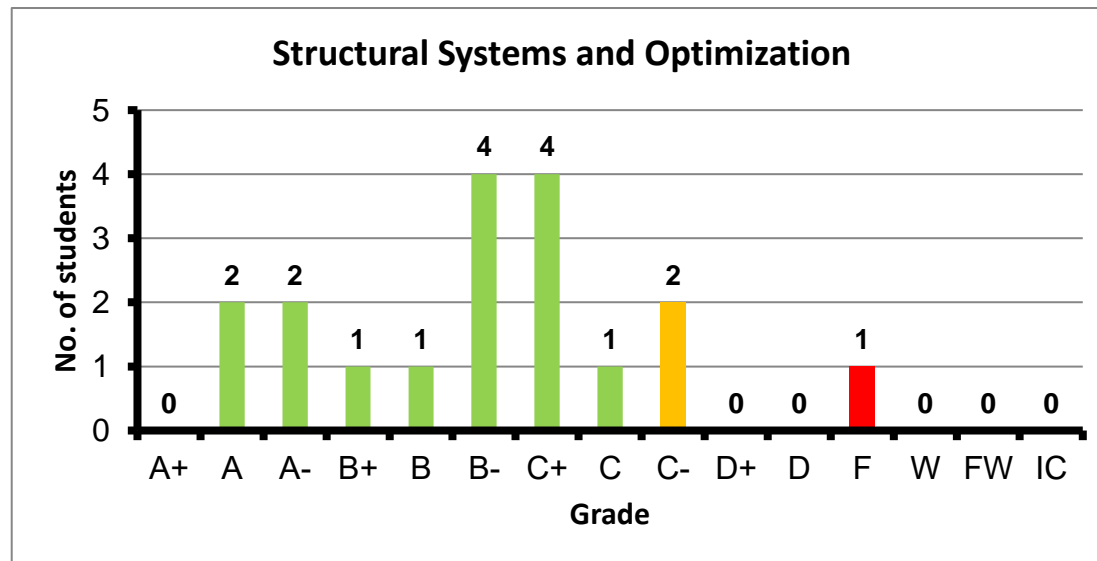
Course: Structural Analysis-3  
 Programs: STE  
 Code: STRN107  
 Student: 12  
 A+ to C: 67%  
 C- to D: 33%  
 F: 0  
 W: 0  
 Average: 2.25  
 Std Dev: 2.45



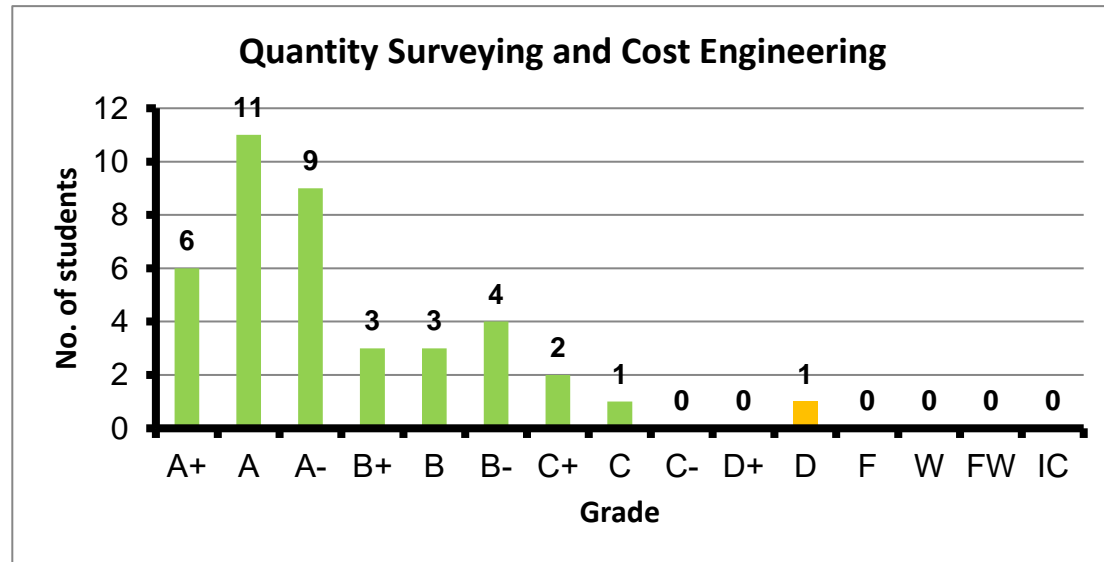
Course: Matrix Structural Analysis  
 Programs: STE  
 Code: STRN305  
 Student: 16  
 A+ to C: 56%  
 C- to D: 38%  
 F: 0  
 W: 0  
 Average: 2.40  
 Std Dev: 2.66



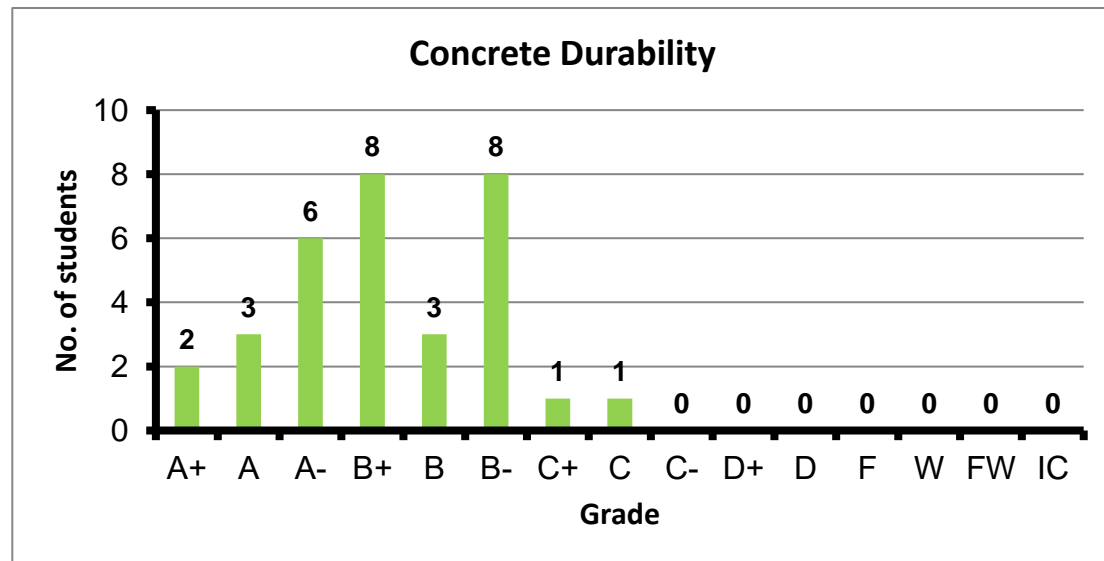
Course: Structural Systems and Optimization  
 Programs: STE  
 Code: STRN308  
 Student: 18  
 A+ to C: 83%  
 C- to D: 11%  
 F: 1  
 W: 0  
 Average: 2.62  
 Std Dev: 2.86



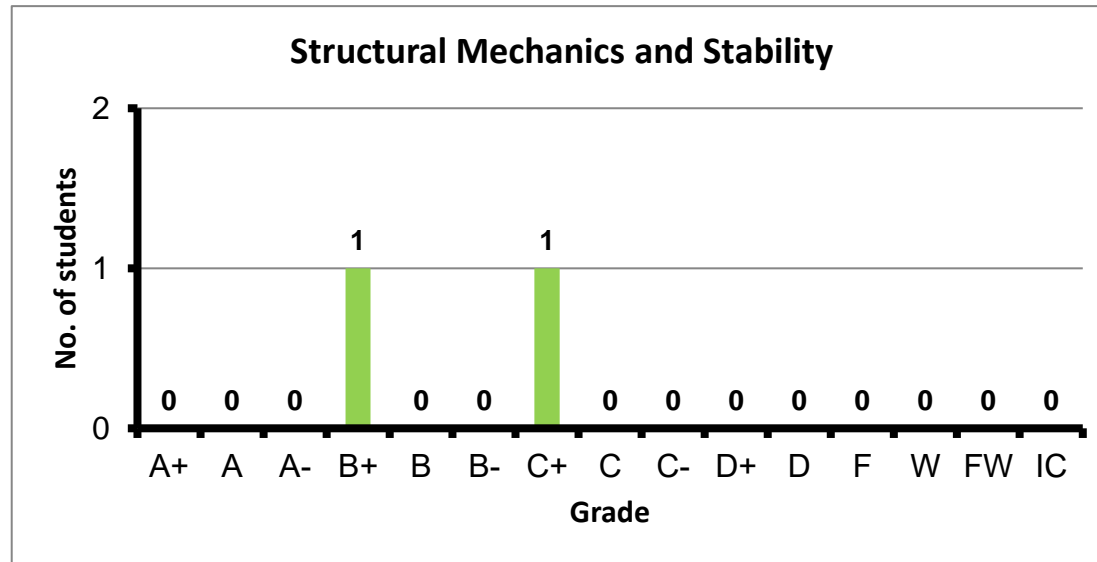
Course: Quantity Surveying and Cost Engineering  
 Programs: STE  
 Code: STRN419  
 Student: 40  
 A+ to C: 98%  
 C- to D: 3%  
 F: 0  
 W: 0  
 Average: 3.47  
 Std Dev: 3.58



Course: Concrete Durability  
 Programs: STE  
 Code: STRN431  
 Student: 32  
 A+ to C: 100%  
 C- to D: 0%  
 F: 0  
 W: 0  
 Average: 3.23  
 Std Dev: 3.33



Course: Structural Mechanics and Stability  
 Programs: STE  
 Code: STRN433  
 Student: 2  
 A+ to C: 100%  
 C- to D: 0%  
 F: 0  
 W: 0  
 Average: 2.80  
 Std Dev: 4.02



Course: Seismic Design of Structures  
 Programs: STE  
 Code: STRN437  
 Student: 42  
 A+ to C: 88%  
 C- to D: 7%  
 F: 1  
 W: 1  
 Average: 3.19  
 Std Dev: 3.36

