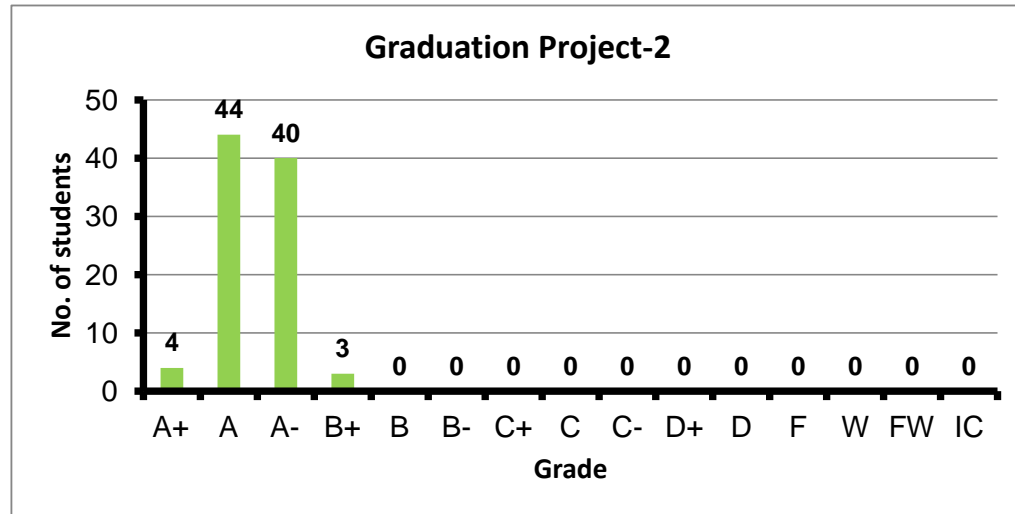
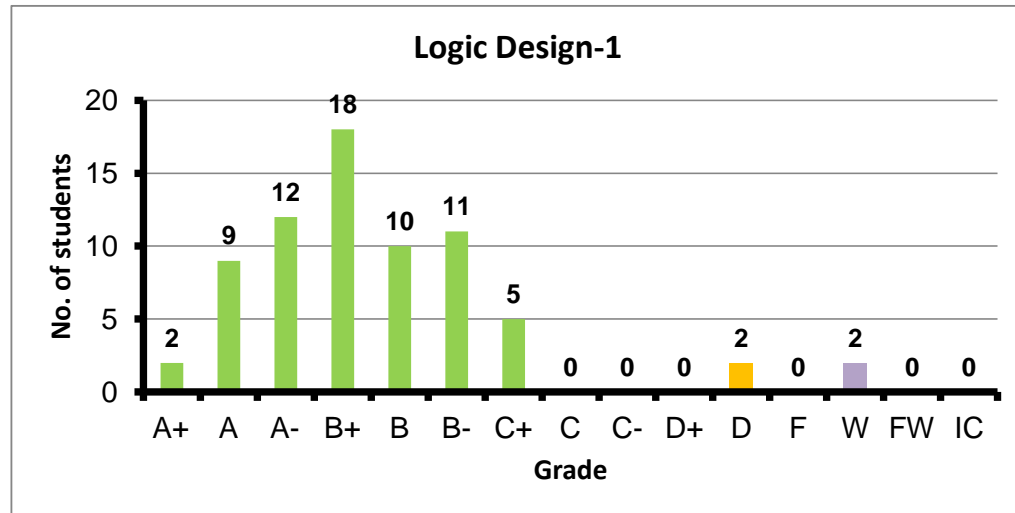


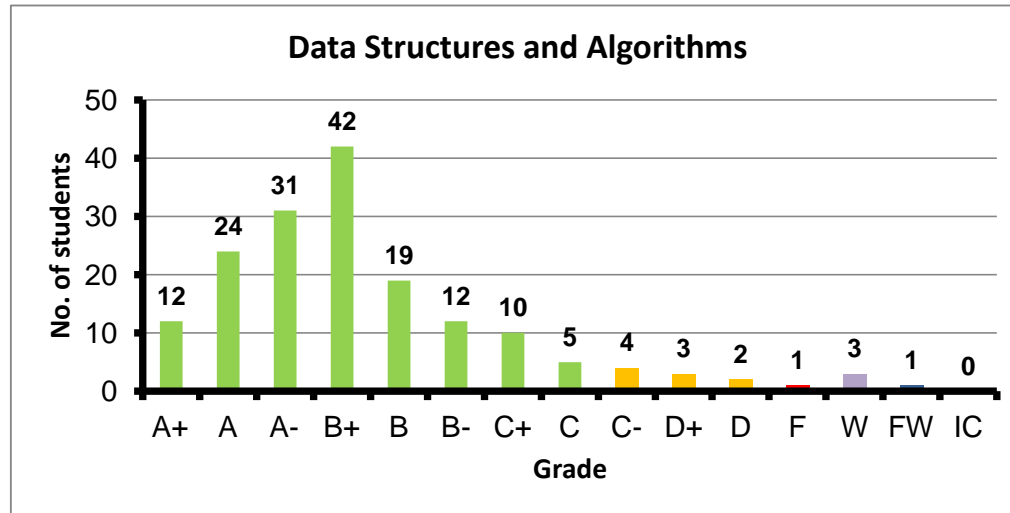
Course: Graduation Project-2
 Programs: CCE-C
 Code: CCEN481
 Student: 91
 A+ to C: 100%
 C- to D: 0%
 F: 0
 W: 0
 Average: 3.85
 Std Dev: 3.87



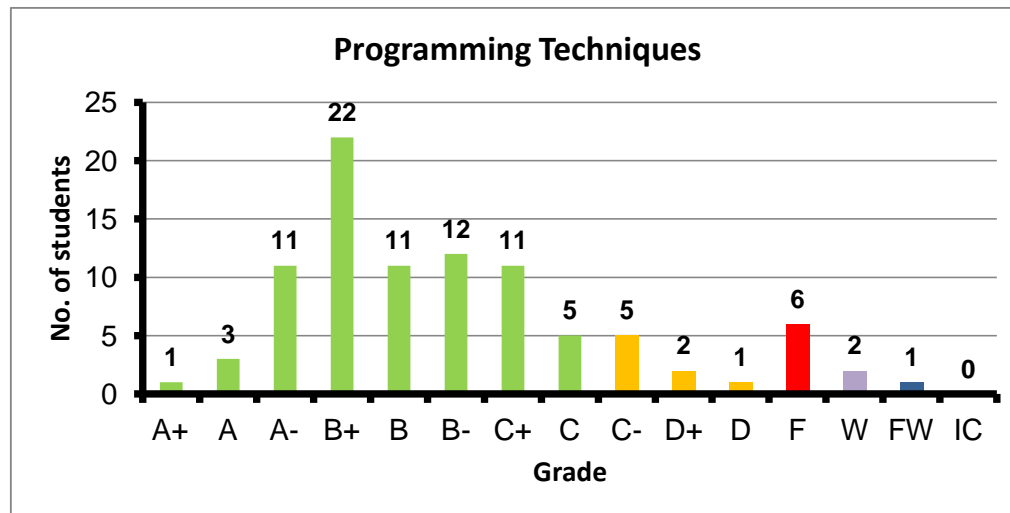
Course: Logic Design-1
 Programs: CCE-C
 Code: CMPN101
 Student: 71
 A+ to C: 94%
 C- to D: 3%
 F: 0
 W: 2
 Average: 3.20
 Std Dev: 3.26



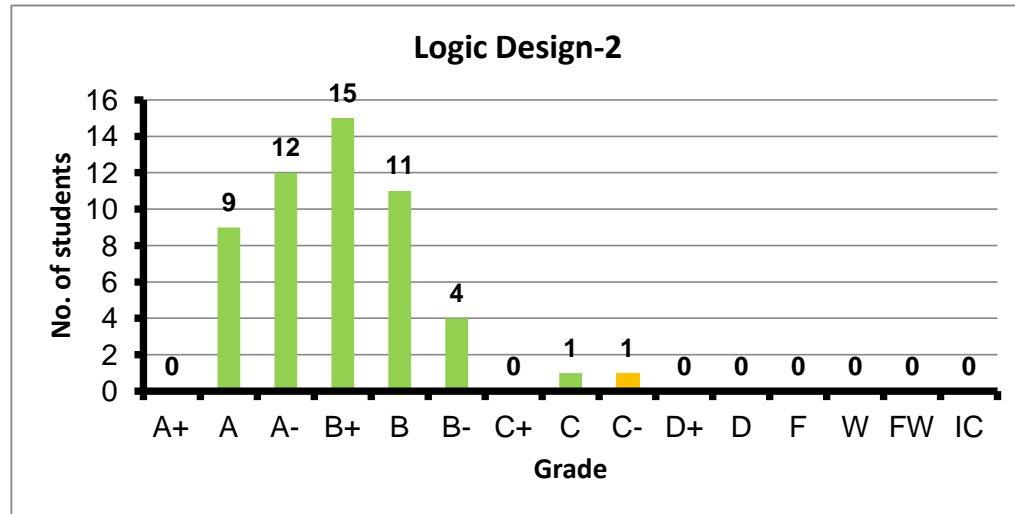
Course: Data Structures and Algorithms
 Programs: CCE-C
 Code: CMPN102
 Student: 170
 A+ to C: 92%
 C- to D: 5%
 F: 1
 W: 3
 Average: 3.23
 Std Dev: 3.30



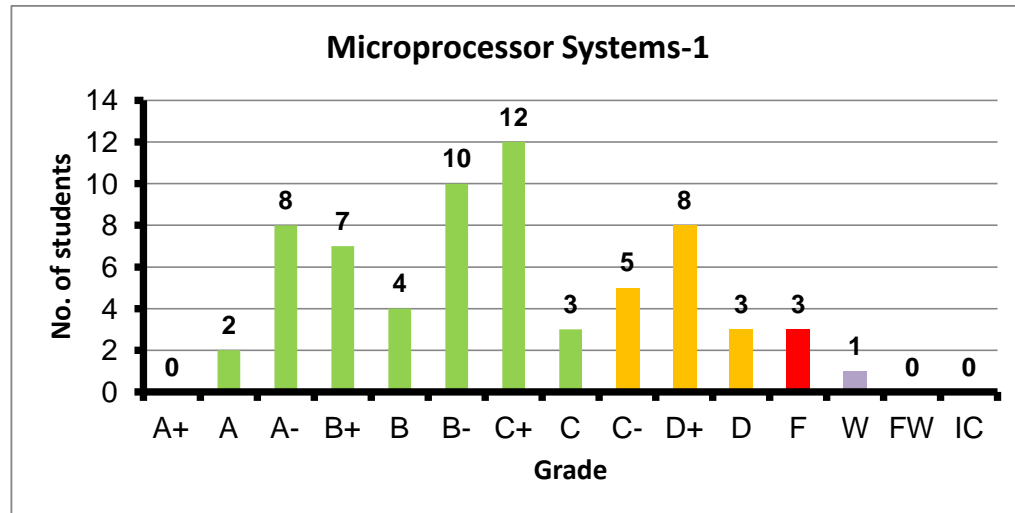
Course: Programming Techniques
 Programs: CCE-C
 Code: CMPN103
 Student: 93
 A+ to C: 82%
 C- to D: 9%
 F: 6
 W: 2
 Average: 2.69
 Std Dev: 2.86



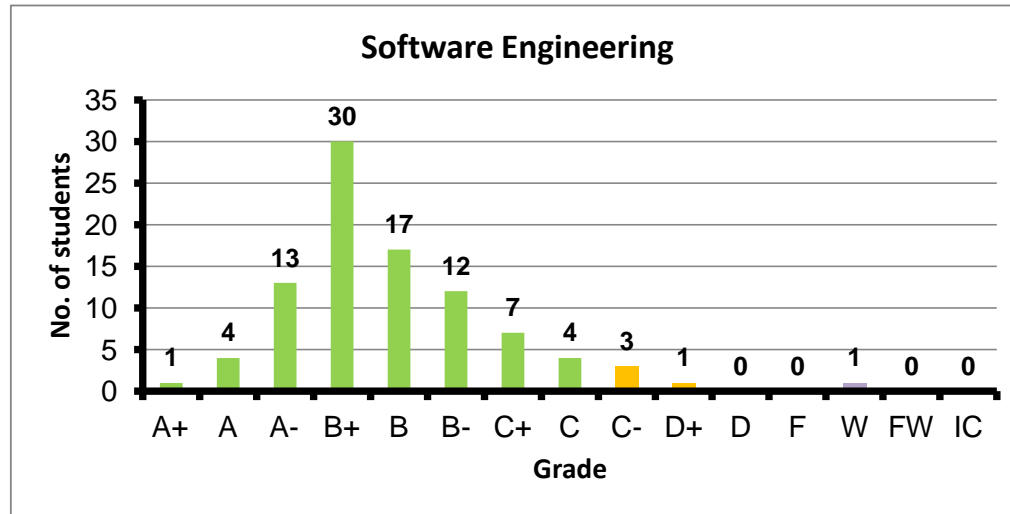
Course: Logic Design-2
 Programs: CCE-C
 Code: CMPN111
 Student: 53
 A+ to C: 98%
 C- to D: 2%
 F: 0
 W: 0
 Average: 3.35
 Std Dev: 3.42



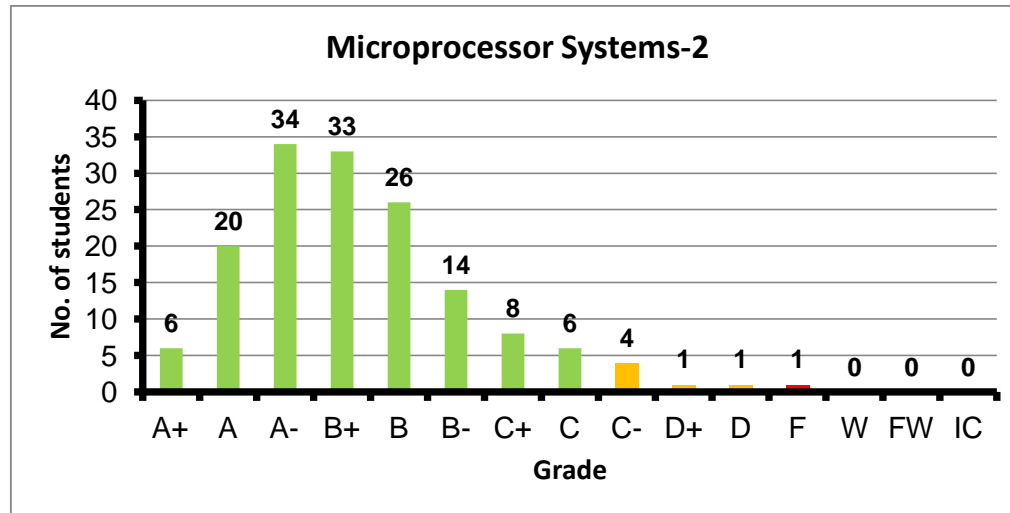
Course: Microprocessor Systems-1
 Programs: CCE-C
 Code: CMPN201
 Student: 66
 A+ to C: 70%
 C- to D: 24%
 F: 3
 W: 1
 Average: 2.40
 Std Dev: 2.59



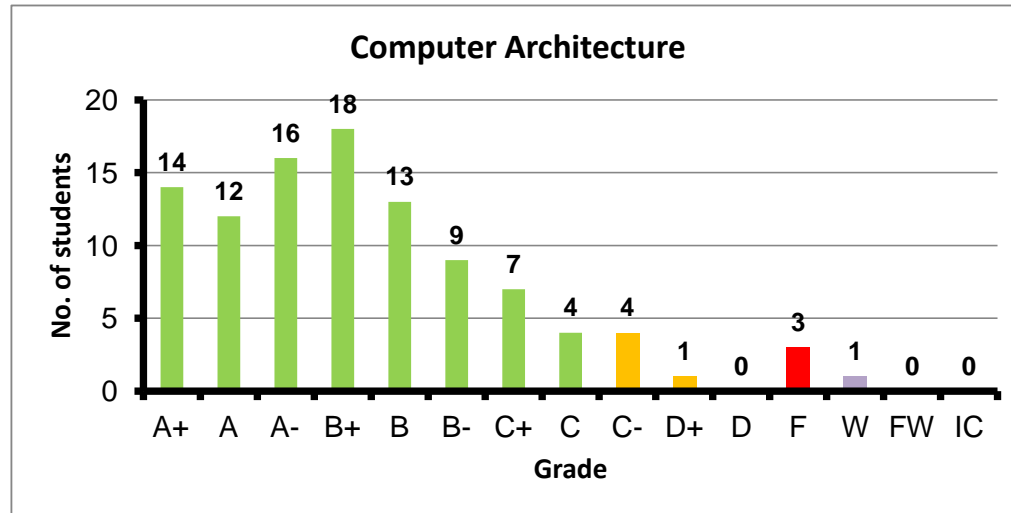
Course: Software Engineering
 Programs: CCE-C
 Code: CMPN203
 Student: 93
 A+ to C: 95%
 C- to D: 4%
 F: 0
 W: 1
 Average: 3.06
 Std Dev: 3.11



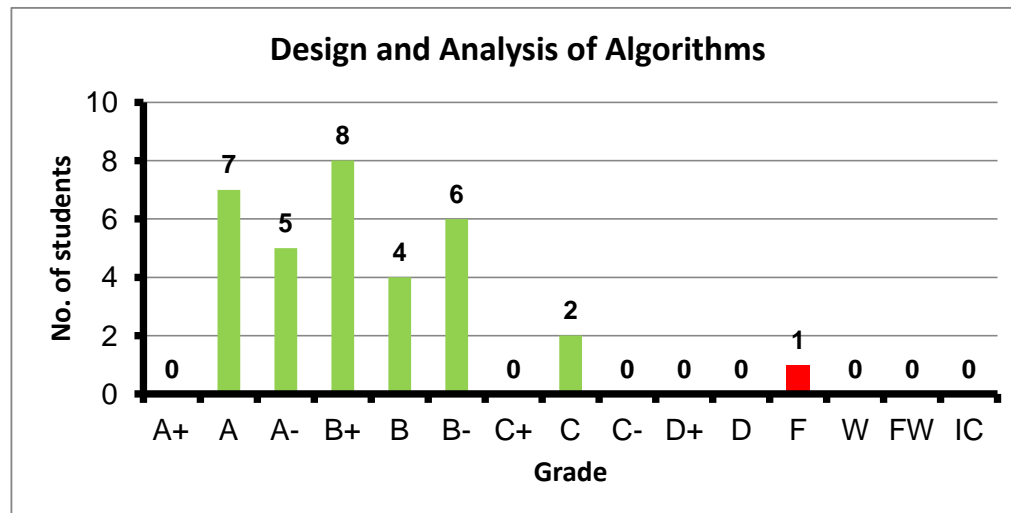
Course: Microprocessor Systems-2
 Programs: CCE-C
 Code: CMPN211
 Student: 154
 A+ to C: 95%
 C- to D: 4%
 F: 1
 W: 0
 Average: 3.21
 Std Dev: 3.29



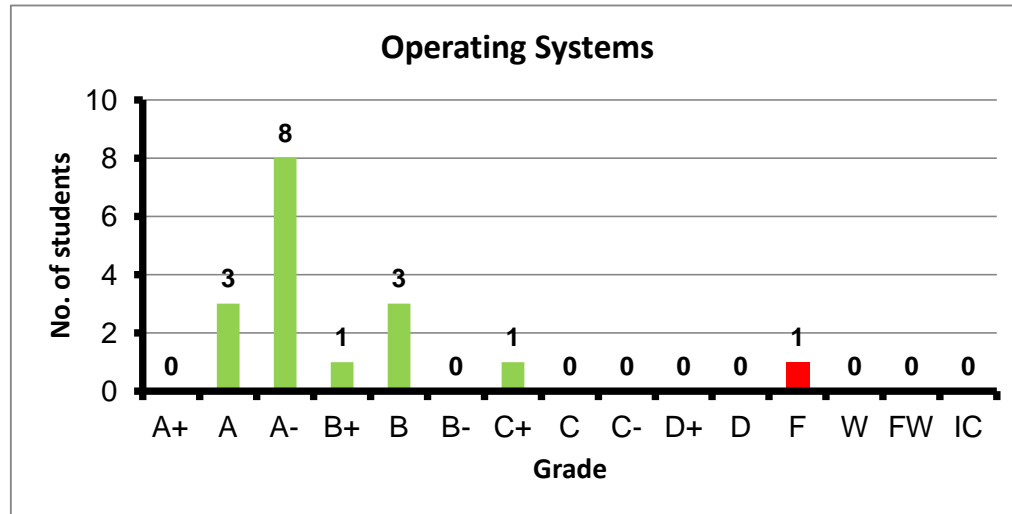
Course: Computer Architecture
 Programs: CCE-C
 Code: CMPN301
 Student: 102
 A+ to C: 91%
 C- to D: 5%
 F: 3
 W: 1
 Average: 3.15
 Std Dev: 3.28



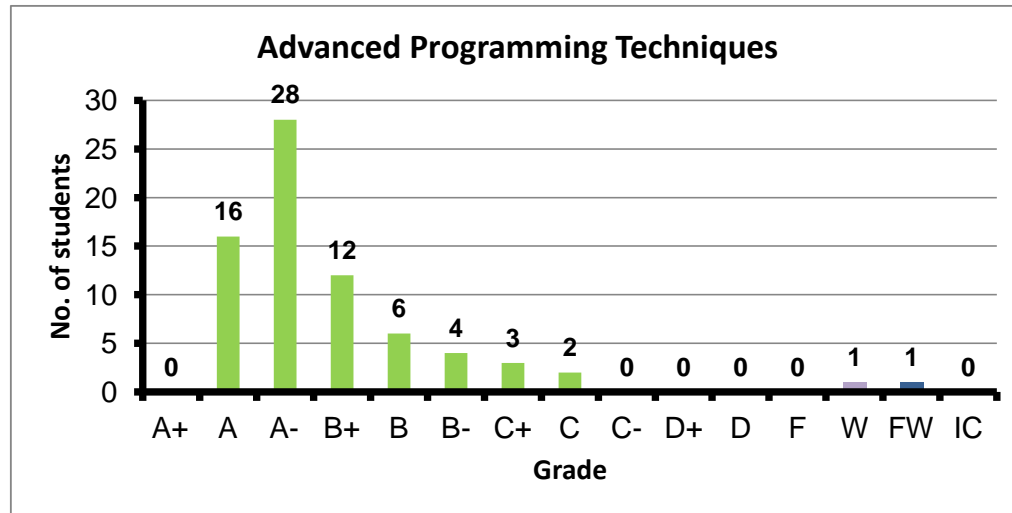
Course: Design and Analysis of Algorithms
 Programs: CCE-C
 Code: CMPN302
 Student: 33
 A+ to C: 97%
 C- to D: 0%
 F: 1
 W: 0
 Average: 3.18
 Std Dev: 3.33



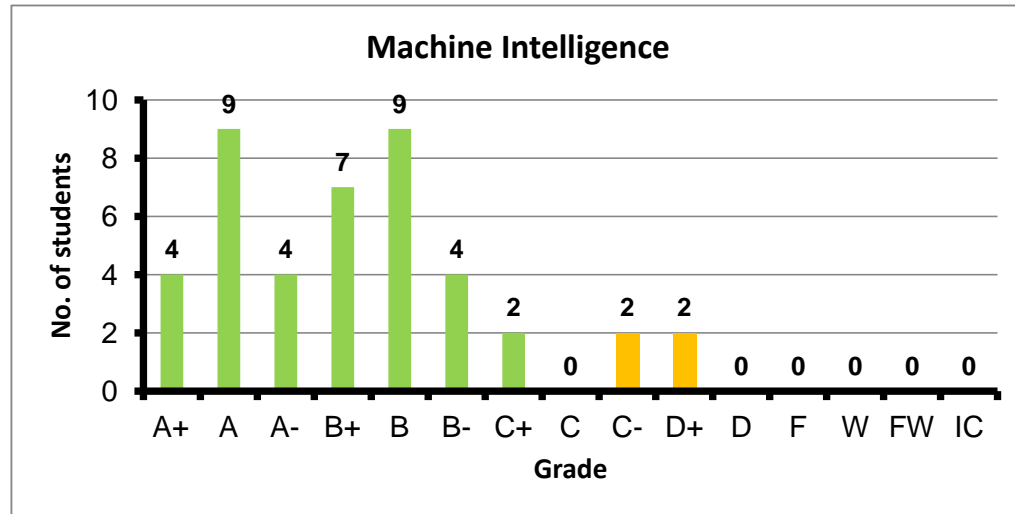
Course: Operating Systems
 Programs: CCE-C
 Code: CMPN303
 Student: 17
 A+ to C: 94%
 C- to D: 0%
 F: 1
 W: 0
 Average: 3.31
 Std Dev: 3.54



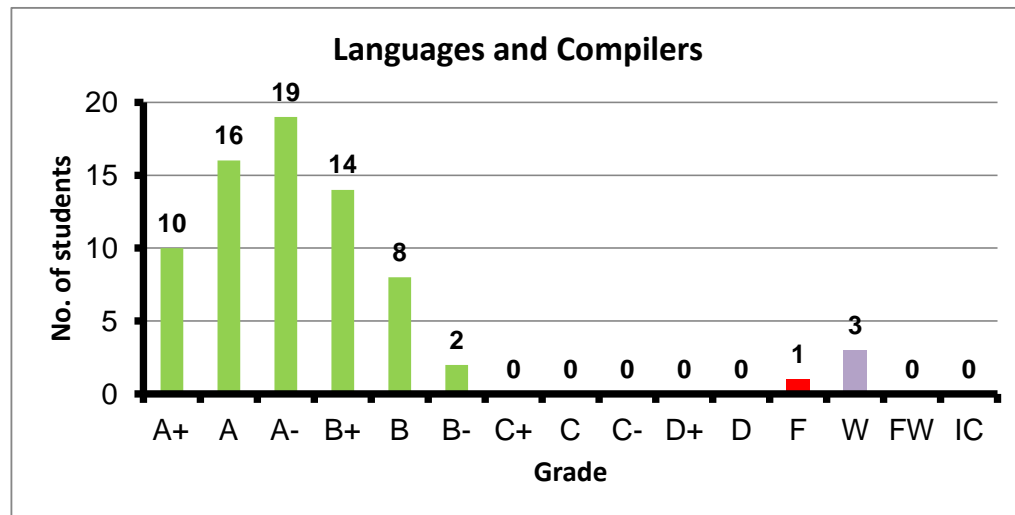
Course: Advanced Programming Techniques
 Programs: CCE-C
 Code: CMPN306
 Student: 73
 A+ to C: 97%
 C- to D: 0%
 F: 0
 W: 1
 Average: 3.48
 Std Dev: 3.53



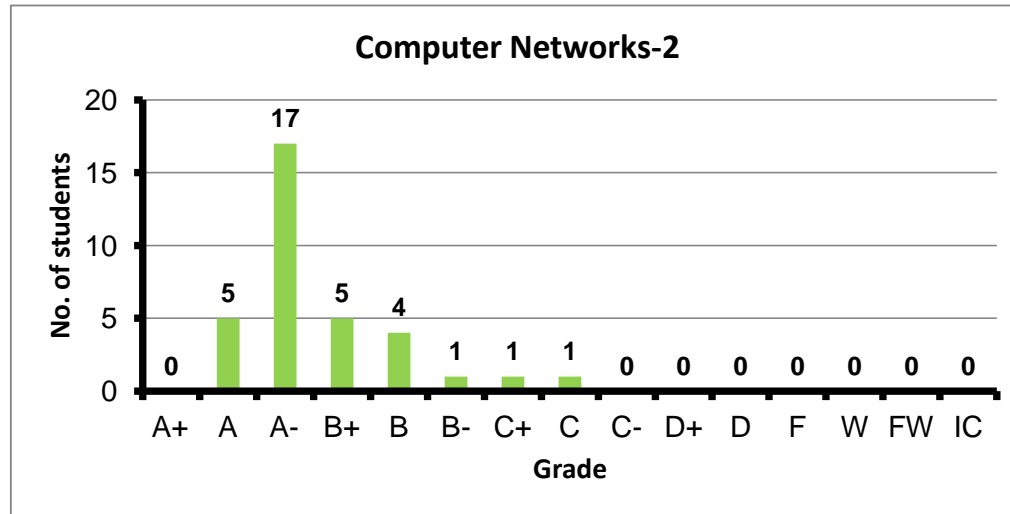
Course: Machine Intelligence
 Programs: CCE-C
 Code: CMPN402
 Student: 43
 A+ to C: 91%
 C- to D: 9%
 F: 0
 W: 0
 Average: 3.22
 Std Dev: 3.34



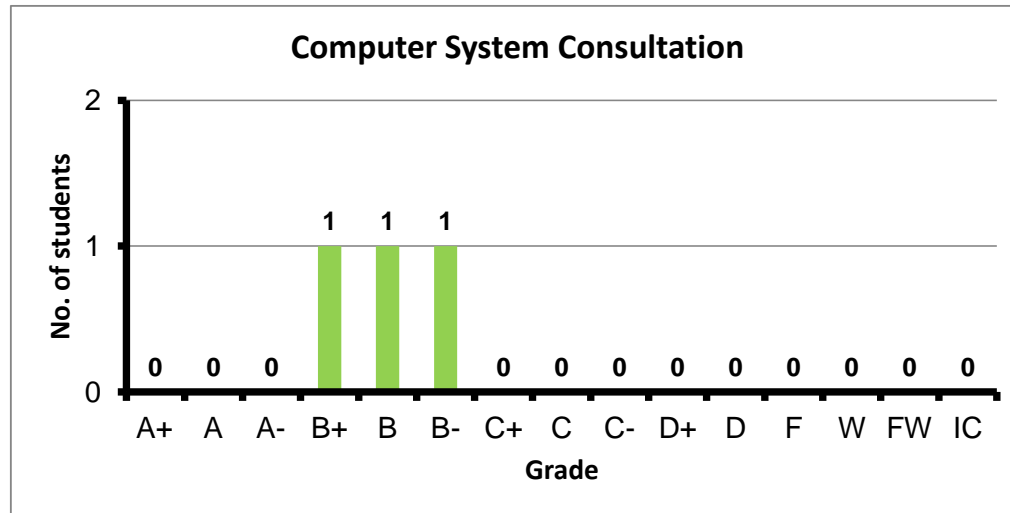
Course: Languages and Compilers
 Programs: CCE-C
 Code: CMPN403
 Student: 73
 A+ to C: 95%
 C- to D: 0%
 F: 1
 W: 3
 Average: 3.57
 Std Dev: 3.60



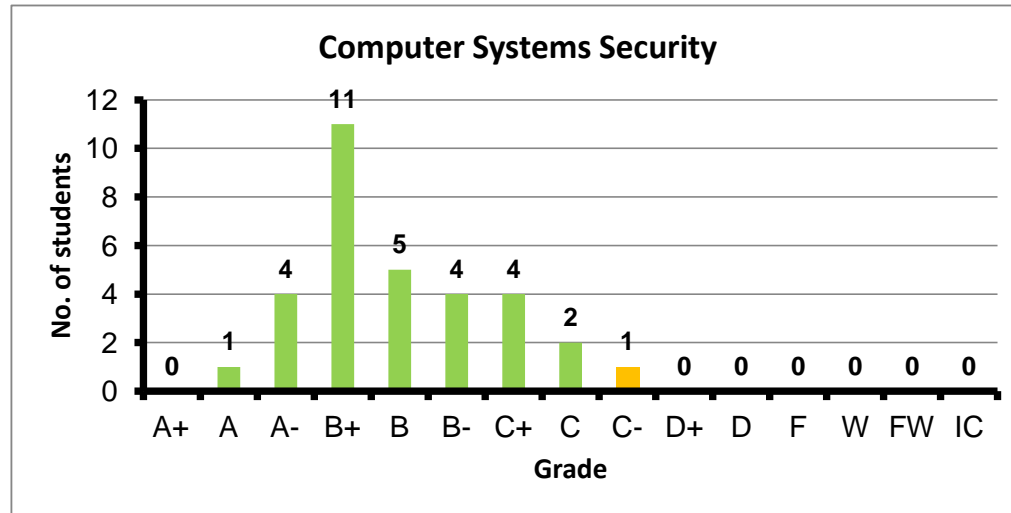
Course: Computer Networks-2
 Programs: CCE-C
 Code: CMPN415
 Student: 34
 A+ to C: 100%
 C- to D: 0%
 F: 0
 W: 0
 Average: 3.48
 Std Dev: 3.57



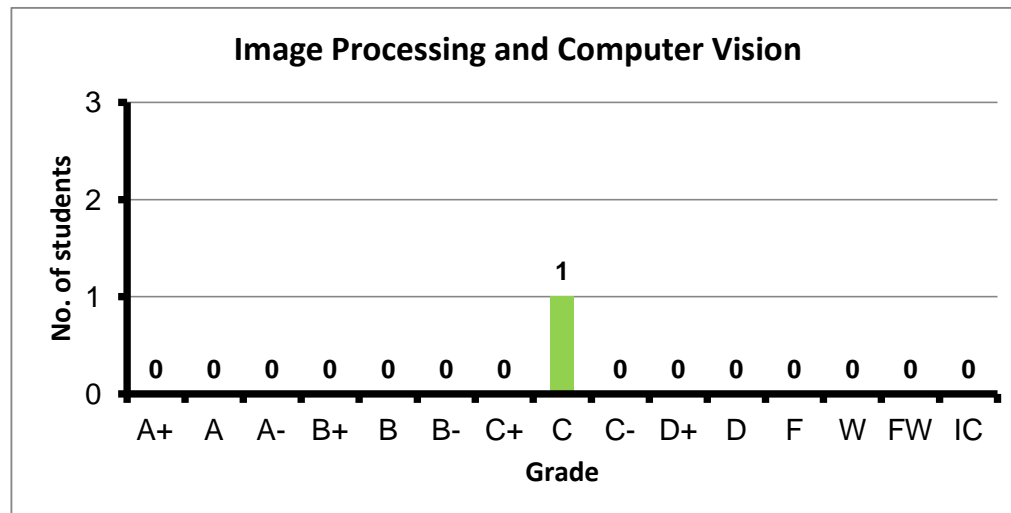
Course: Computer System Consultation
 Programs: CCE-C
 Code: CMPN425
 Student: 3
 A+ to C: 100%
 C- to D: 0%
 F: 0
 W: 0
 Average: 3.00
 Std Dev: 3.69



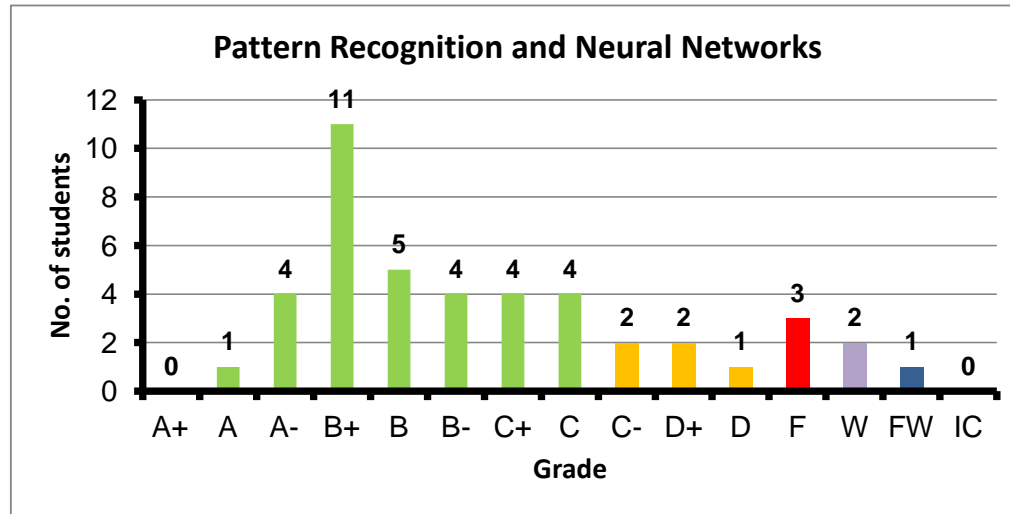
Course: Computer Systems Security
 Programs: CCE-C
 Code: CMPN426
 Student: 32
 A+ to C: 97%
 C- to D: 3%
 F: 0
 W: 0
 Average: 2.99
 Std Dev: 3.09



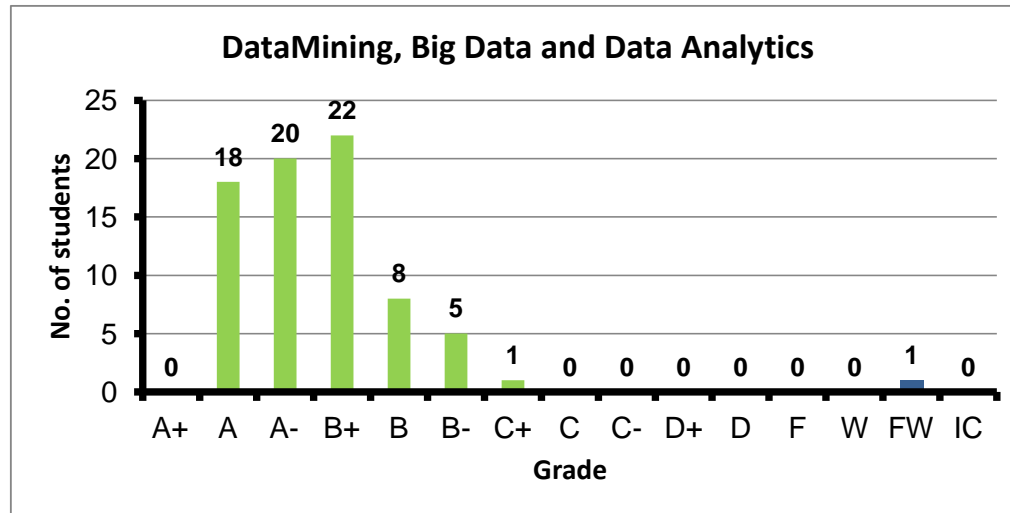
Course: Image Processing and Computer Vision
 Programs: CCE-C
 Code: CMPN446
 Student: 1
 A+ to C: 100%
 C- to D: 0%
 F: 0
 W: 0
 Average: 2.00
 Std Dev: #DIV/0!



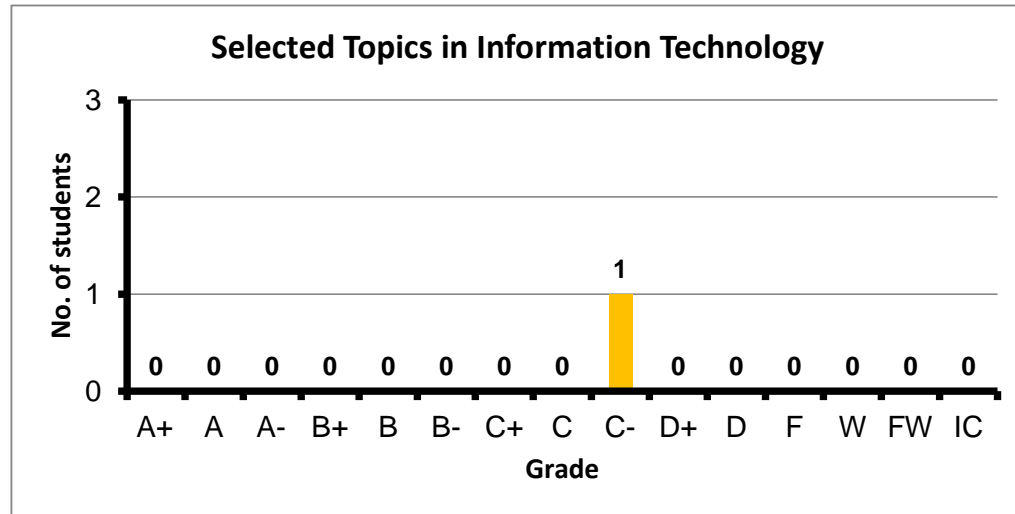
Course: Pattern Recognition and Neural Networks
 Programs: CCE-C
 Code: CMPN450
 Student: 44
 A+ to C: 75%
 C- to D: 11%
 F: 3
 W: 2
 Average: 2.57
 Std Dev: 2.75



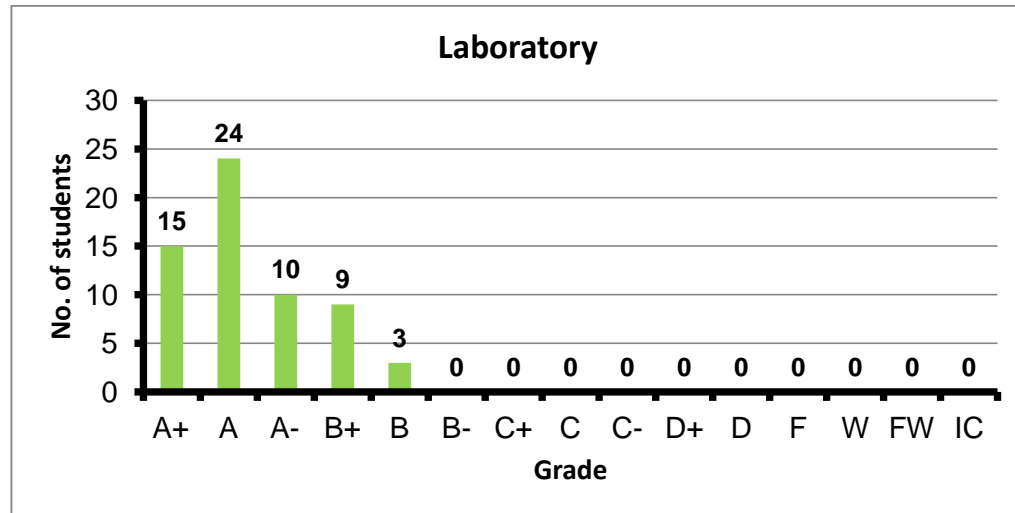
Course: DataMining, Big Data and Data Analytics
 Programs: CCE-C
 Code: CMPN451
 Student: 75
 A+ to C: 99%
 C- to D: 0%
 F: 0
 W: 0
 Average: 3.49
 Std Dev: 3.54



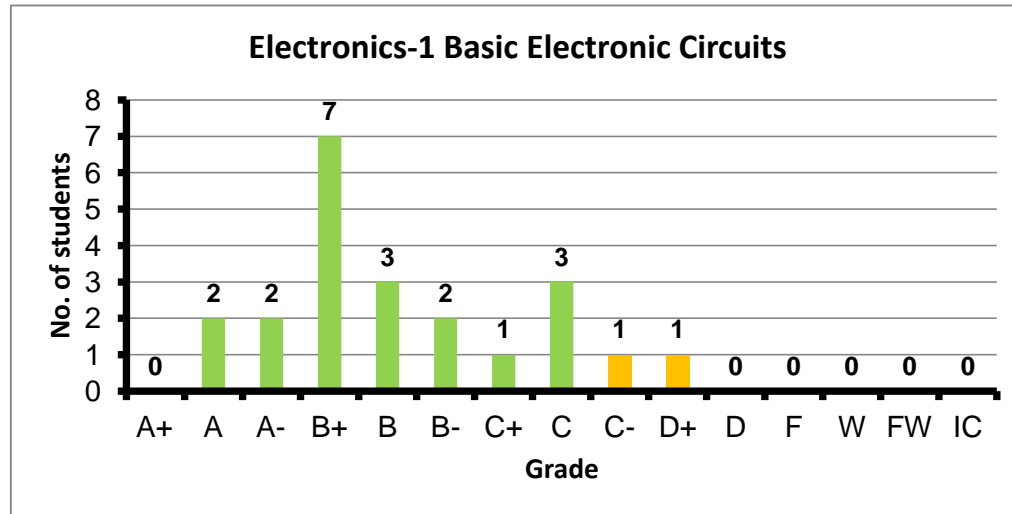
Course: Selected Topics in Information Technology
 Programs: CCE-C
 Code: CMPN462
 Student: 1
 A+ to C: 0%
 C- to D: 100%
 F: 0
 W: 0
 Average: 1.70
 Std Dev: #DIV/0!



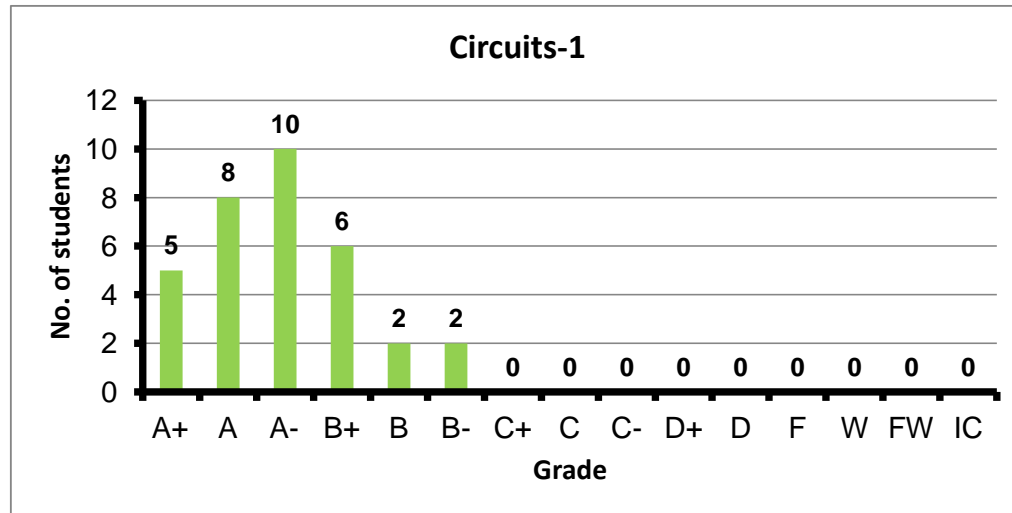
Course: Laboratory
 Programs: CCE-E
 Code: ELCN100
 Student: 61
 A+ to C: 100%
 C- to D: 0%
 F: 0
 W: 0
 Average: 3.80
 Std Dev: 3.84



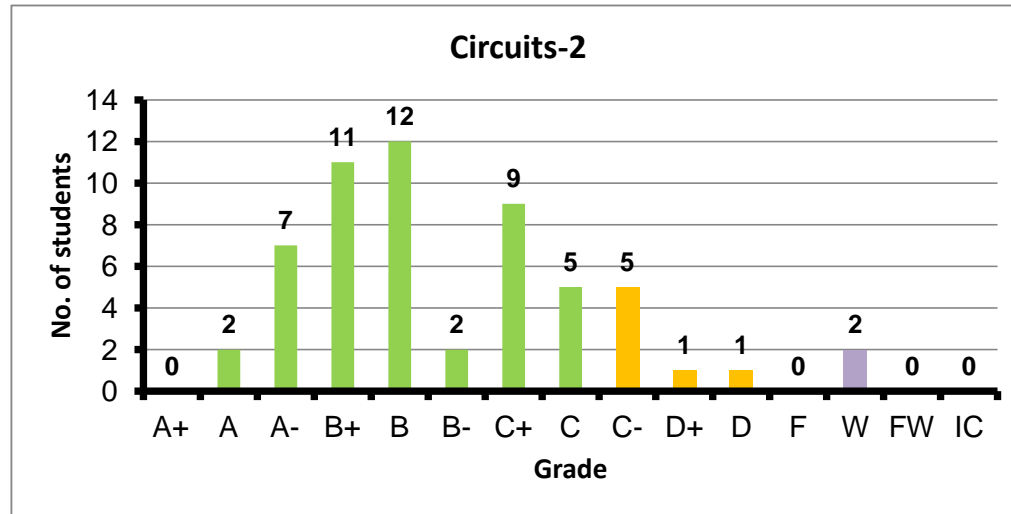
Course: Electronics-1 Basic Electronic Circuits
 Programs: CCE-E
 Code: ELCN101
 Student: 22
 A+ to C: 91%
 C- to D: 9%
 F: 0
 W: 0
 Average: 2.92
 Std Dev: 3.08



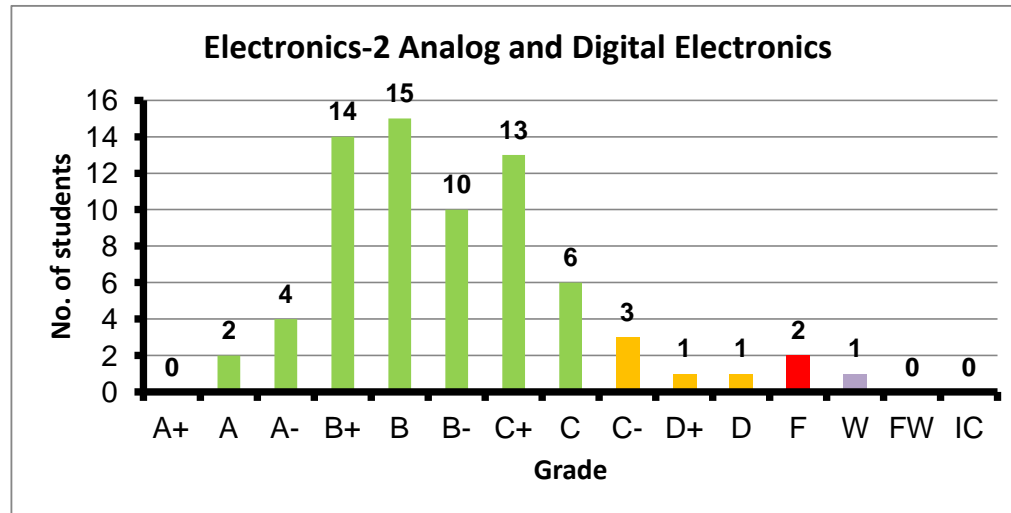
Course: Circuits-1
 Programs: CCE-E
 Code: ELCN102
 Student: 33
 A+ to C: 100%
 C- to D: 0%
 F: 0
 W: 0
 Average: 3.64
 Std Dev: 3.72



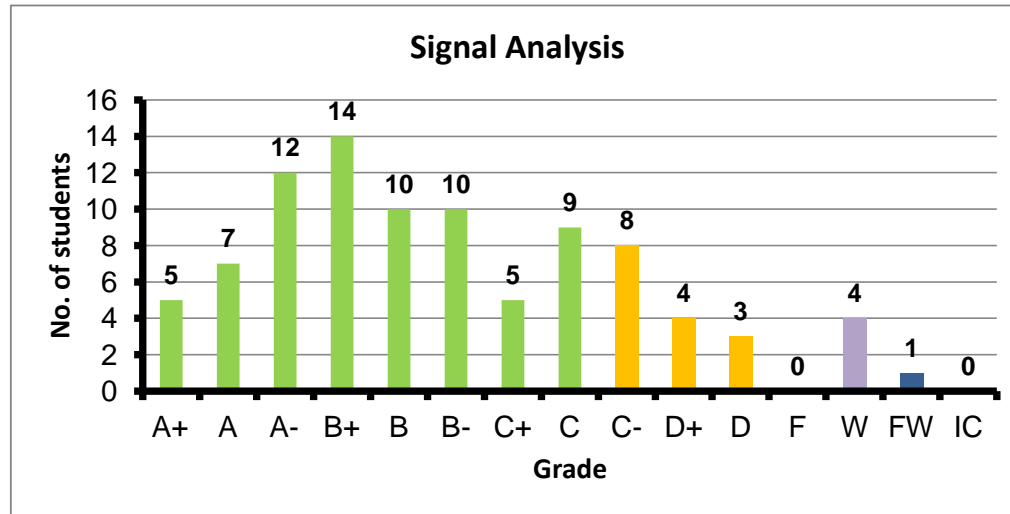
Course: Circuits-2
 Programs: CCE-E
 Code: ELCN112
 Student: 57
 A+ to C: 84%
 C- to D: 12%
 F: 0
 W: 2
 Average: 2.79
 Std Dev: 2.87



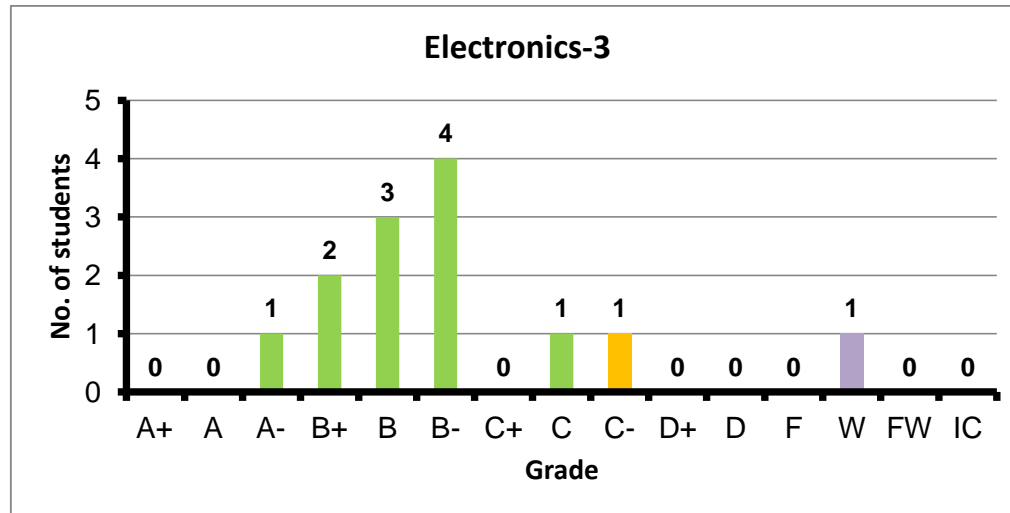
Course: Electronics-2 Analog and Digital Electronics
 Programs: CCE-E
 Code: ELCN201
 Student: 72
 A+ to C: 89%
 C- to D: 7%
 F: 2
 W: 1
 Average: 2.68
 Std Dev: 2.79



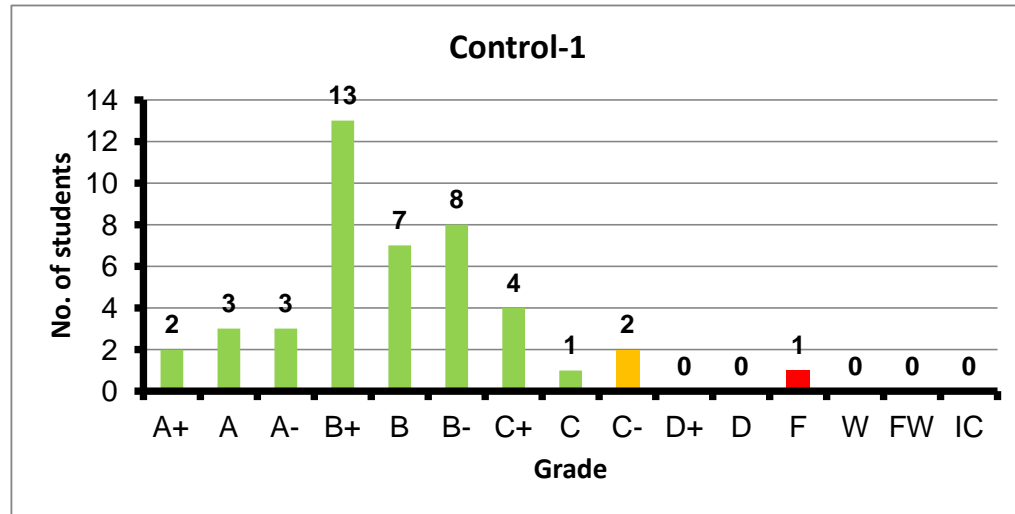
Course: Signal Analysis
 Programs: CCE-E
 Code: ELCN203
 Student: 92
 A+ to C: 78%
 C- to D: 16%
 F: 0
 W: 4
 Average: 2.84
 Std Dev: 2.94



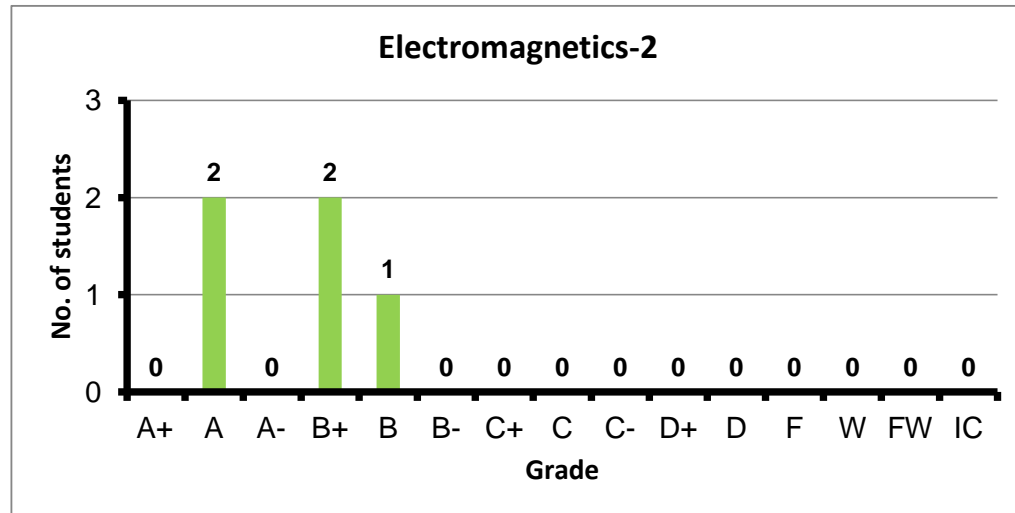
Course: Electronics-3
 Programs: CCE-E
 Code: ELCN301
 Student: 13
 A+ to C: 85%
 C- to D: 8%
 F: 0
 W: 1
 Average: 2.82
 Std Dev: 2.91



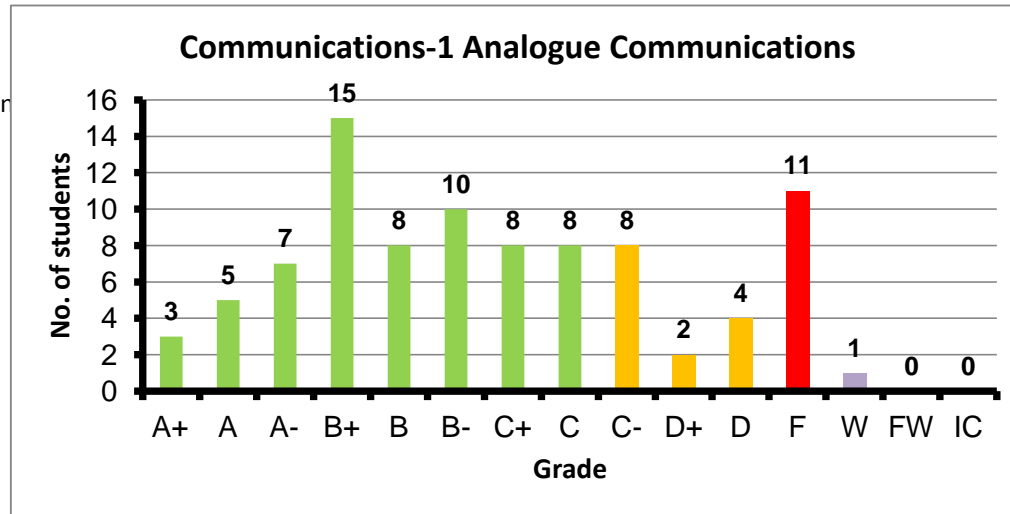
Course: Control-1
 Programs: CCE-E
 Code: ELCN304
 Student: 44
 A+ to C: 93%
 C- to D: 5%
 F: 1
 W: 0
 Average: 2.98
 Std Dev: 3.11



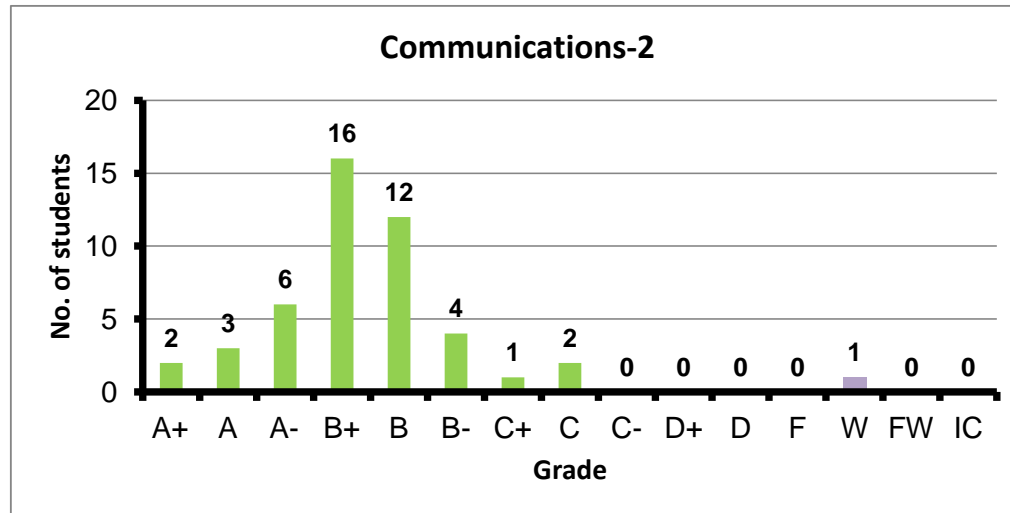
Course: Electromagnetics-2
 Programs: CCE-E
 Code: ELCN305
 Student: 5
 A+ to C: 100%
 C- to D: 0%
 F: 0
 W: 0
 Average: 3.52
 Std Dev: 3.96



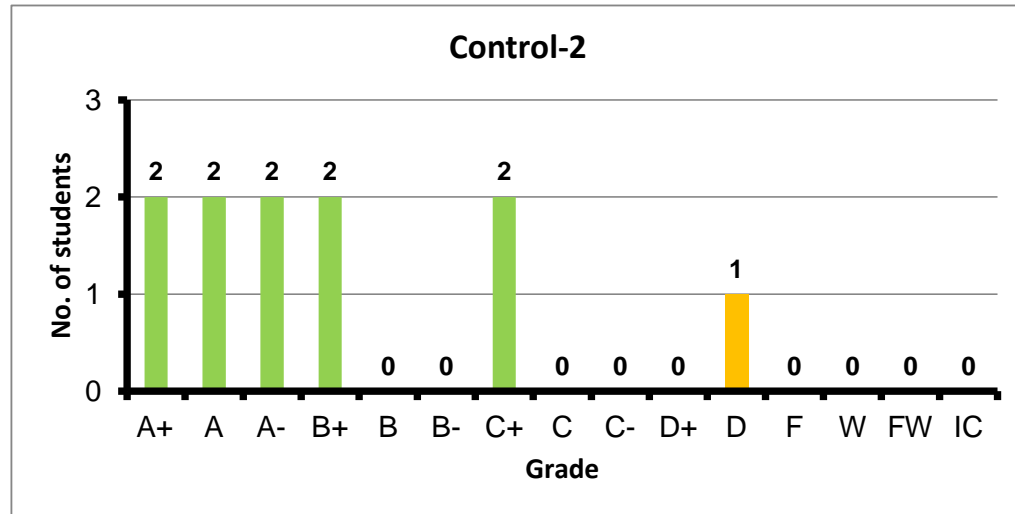
Course: Communications-1 Analogue Communication
 Programs: CCE-E
 Code: ELCN306
 Student: 90
 A+ to C: 71%
 C- to D: 16%
 F: 11
 W: 1
 Average: 2.40
 Std Dev: 2.68



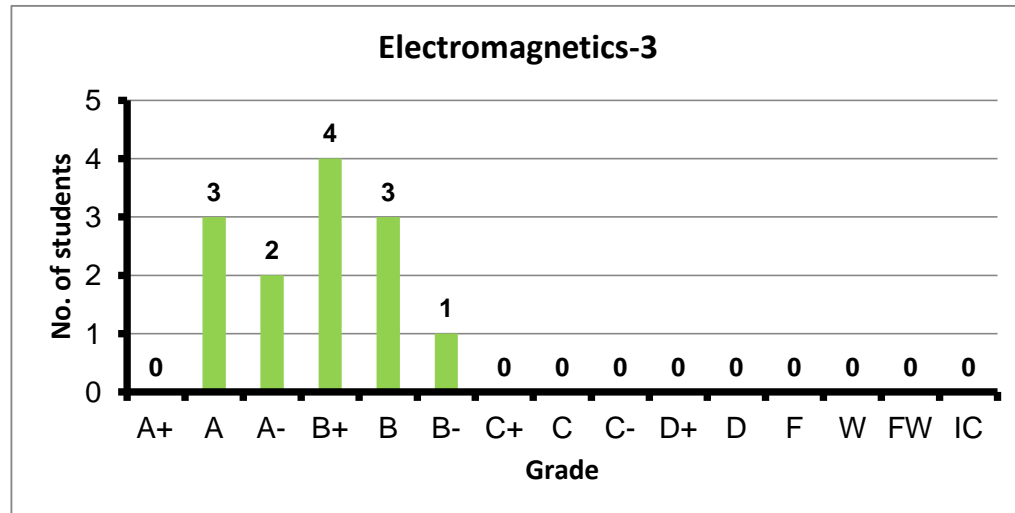
Course: Communications-2
 Programs: CCE-E
 Code: ELCN316
 Student: 47
 A+ to C: 98%
 C- to D: 0%
 F: 0
 W: 1
 Average: 3.22
 Std Dev: 3.27



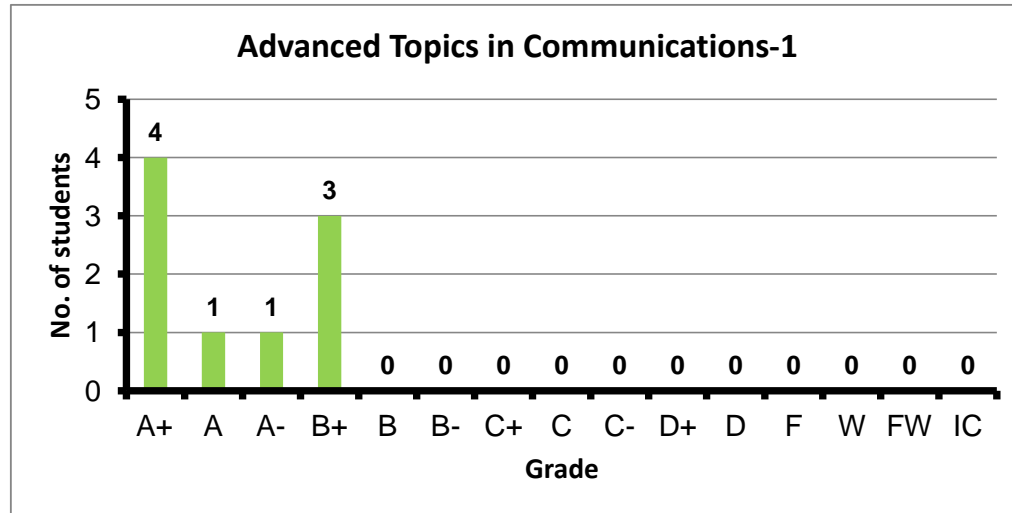
Course: Control-2
 Programs: CCE-E
 Code: ELCN404
 Student: 11
 A+ to C: 91%
 C- to D: 9%
 F: 0
 W: 0
 Average: 3.24
 Std Dev: 3.53



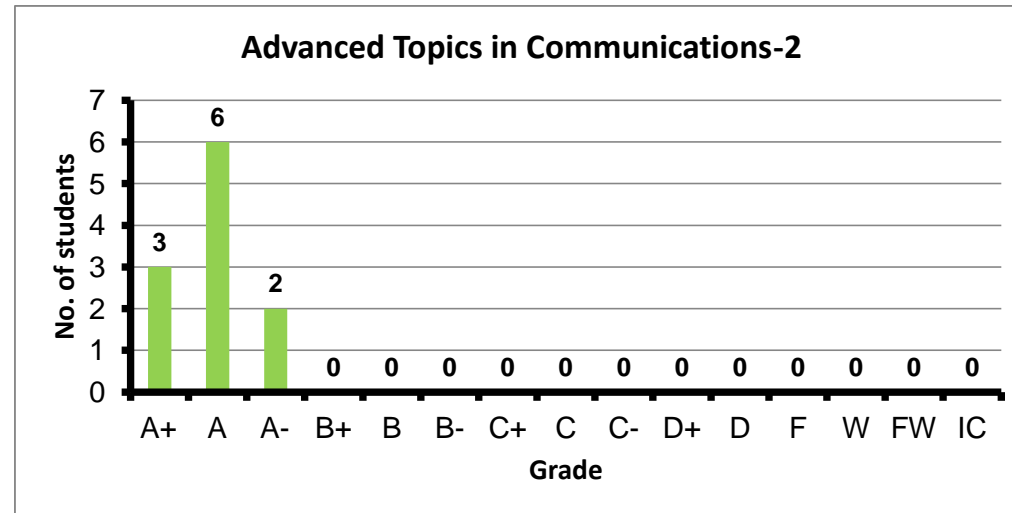
Course: Electromagnetics-3
 Programs: CCE-E
 Code: ELCN405
 Student: 13
 A+ to C: 100%
 C- to D: 0%
 F: 0
 W: 0
 Average: 3.41
 Std Dev: 3.57



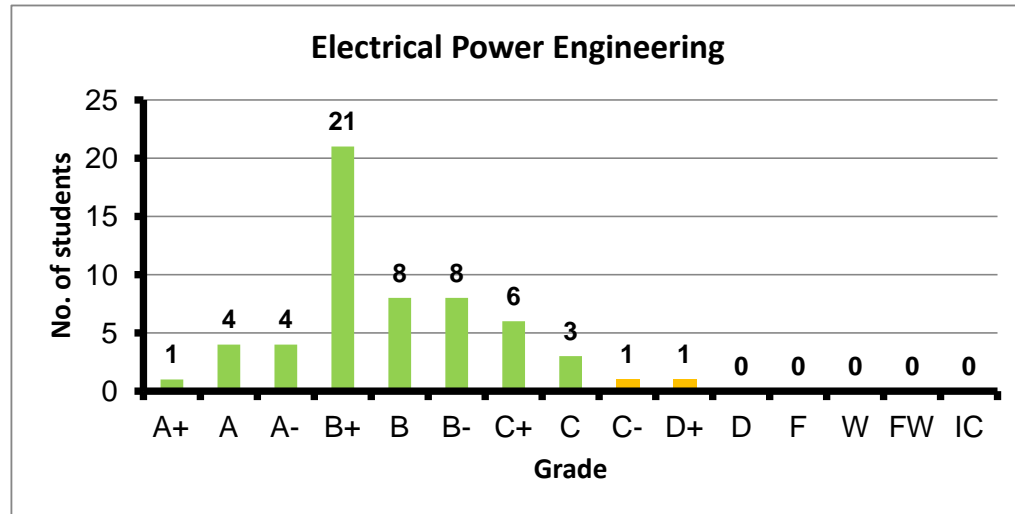
Course: Advanced Topics in Communications-1
 Programs: CCE-E
 Code: ELCN446
 Student: 9
 A+ to C: 100%
 C- to D: 0%
 F: 0
 W: 0
 Average: 3.73
 Std Dev: 3.97



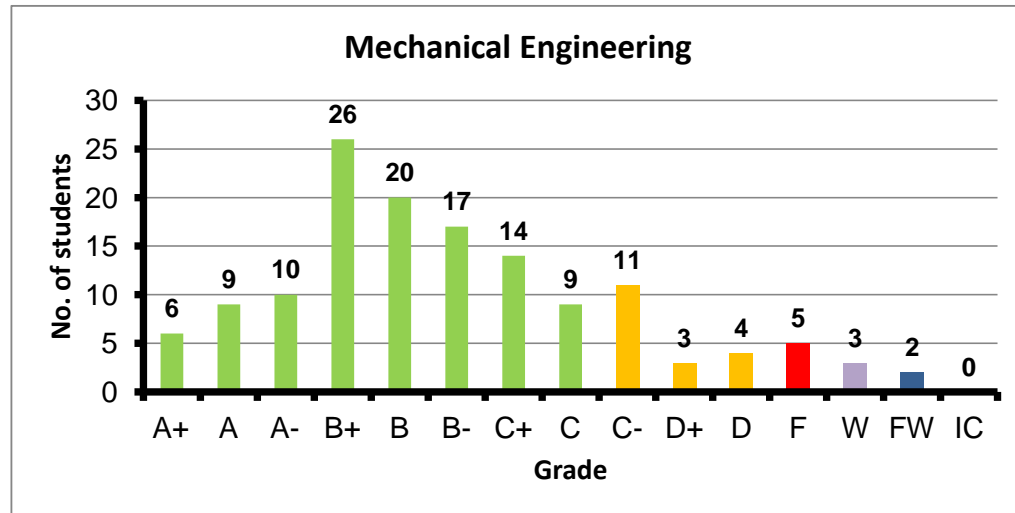
Course: Advanced Topics in Communications-2
 Programs: CCE-E
 Code: ELCN456
 Student: 11
 A+ to C: 100%
 C- to D: 0%
 F: 0
 W: 0
 Average: 3.95
 Std Dev: 4.14



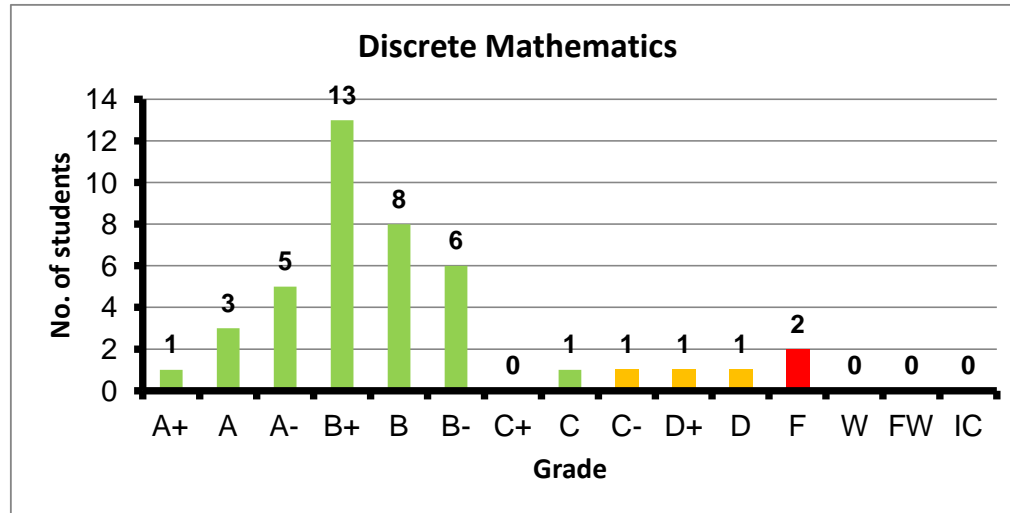
Course: Electrical Power Engineering
 Programs: CCE-E
 Code: EPMN125
 Student: 57
 A+ to C: 96%
 C- to D: 4%
 F: 0
 W: 0
 Average: 3.03
 Std Dev: 3.11



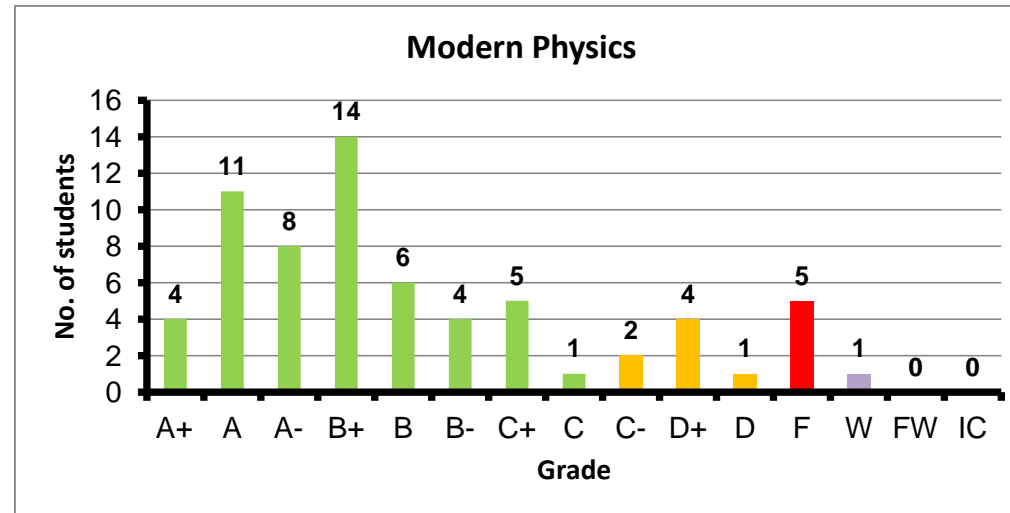
Course: Mechanical Engineering
 Programs: CCE-E
 Code: INTN125
 Student: 139
 A+ to C: 80%
 C- to D: 13%
 F: 5
 W: 3
 Average: 2.73
 Std Dev: 2.87



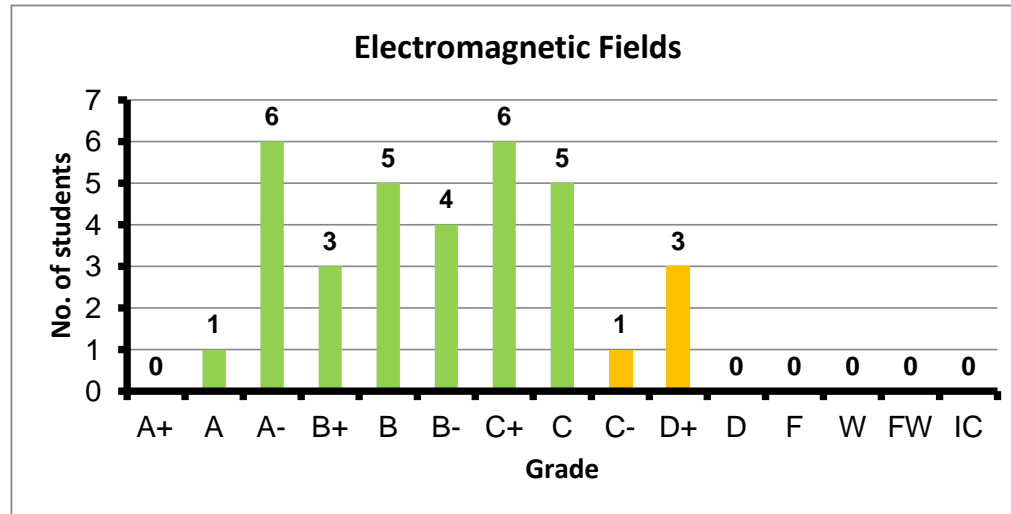
Course: Discrete Mathematics
 Programs: CCE-E
 Code: MTHN104
 Student: 42
 A+ to C: 88%
 C- to D: 7%
 F: 2
 W: 0
 Average: 2.95
 Std Dev: 3.12



Course: Modern Physics
 Programs: CCE-E
 Code: PHYN102
 Student: 66
 A+ to C: 80%
 C- to D: 11%
 F: 5
 W: 1
 Average: 2.89
 Std Dev: 3.12



Course: Electromagnetic Fields
 Programs: CCE-E
 Code: PHYN211
 Student: 34
 A+ to C: 88%
 C- to D: 12%
 F: 0
 W: 0
 Average: 2.69
 Std Dev: 2.83



Course: Electromagnetic for Computer Engineering
 Programs: CCE-E
 Code: PHYN212
 Student: 73
 A+ to C: 71%
 C- to D: 23%
 F: 3
 W: 1
 Average: 2.59
 Std Dev: 2.80

