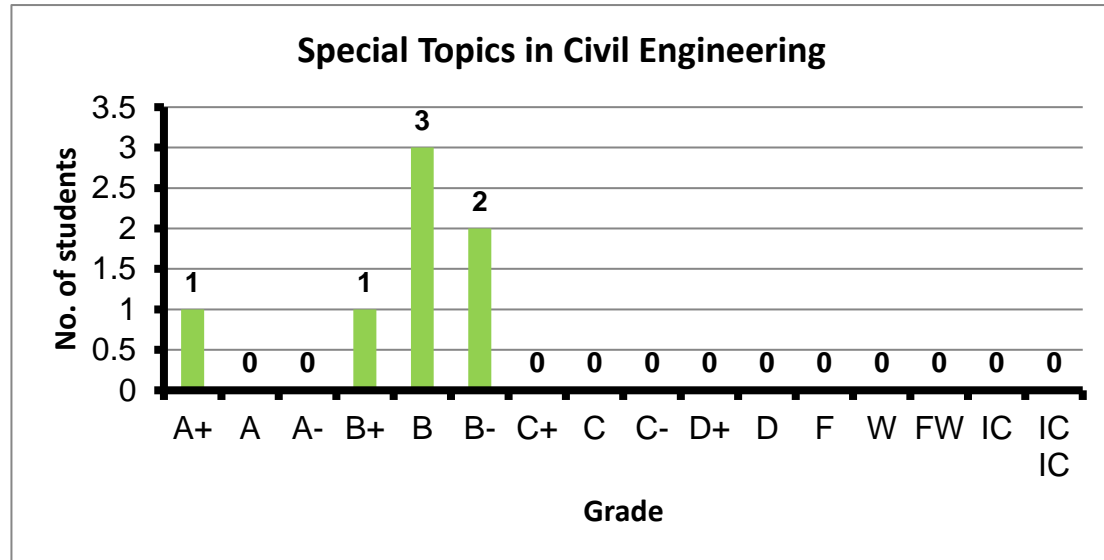
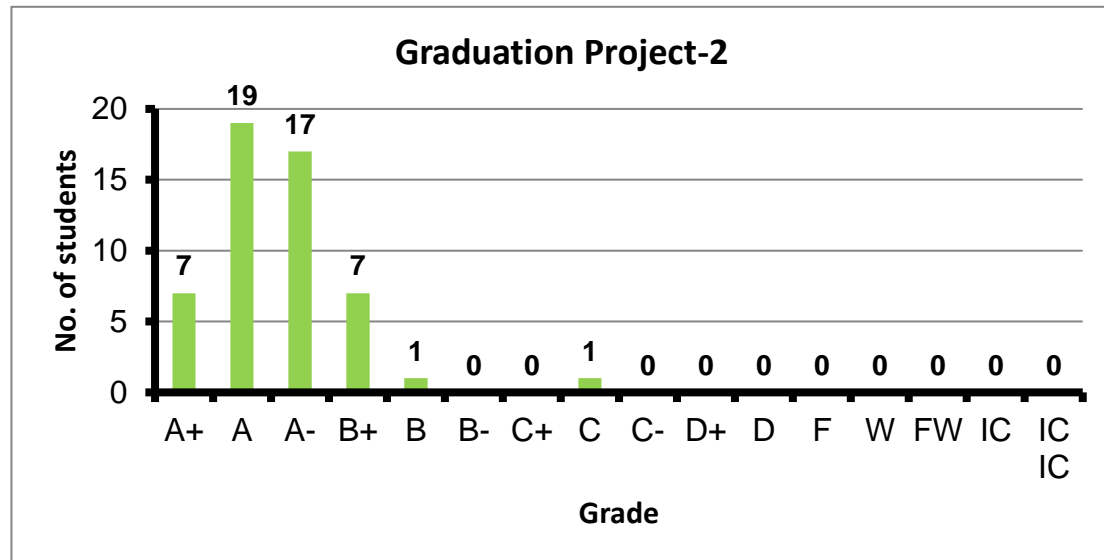


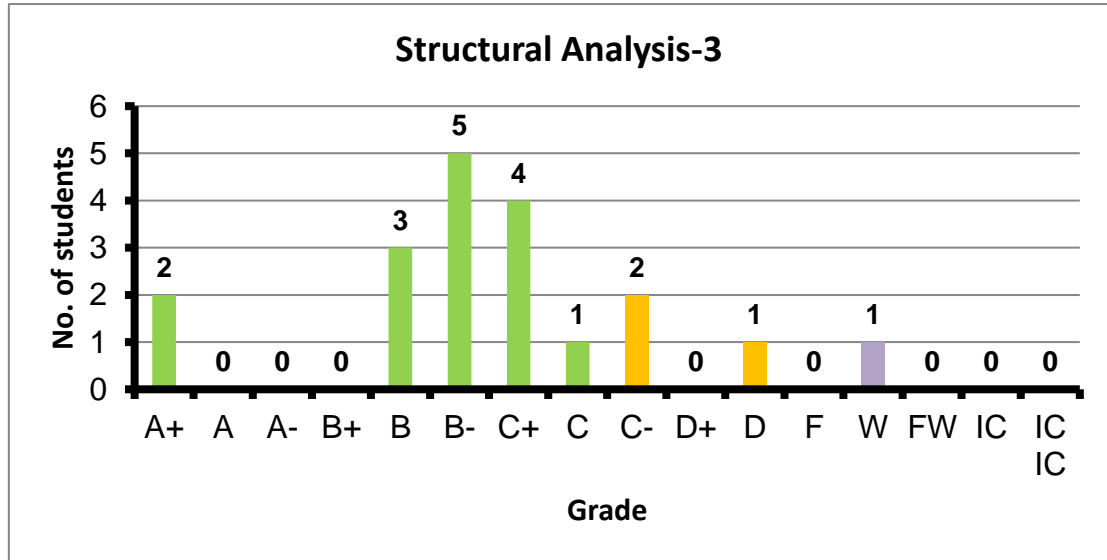
Course: Special Topics in Civil Engineering  
 Programs: STE  
 Code: CVEN361  
 Student: 7  
 A+ to C: 100%  
 C- to D: 0%  
 F: 0  
 W: 0  
 Average: 3.10  
 Std Dev: 3.38



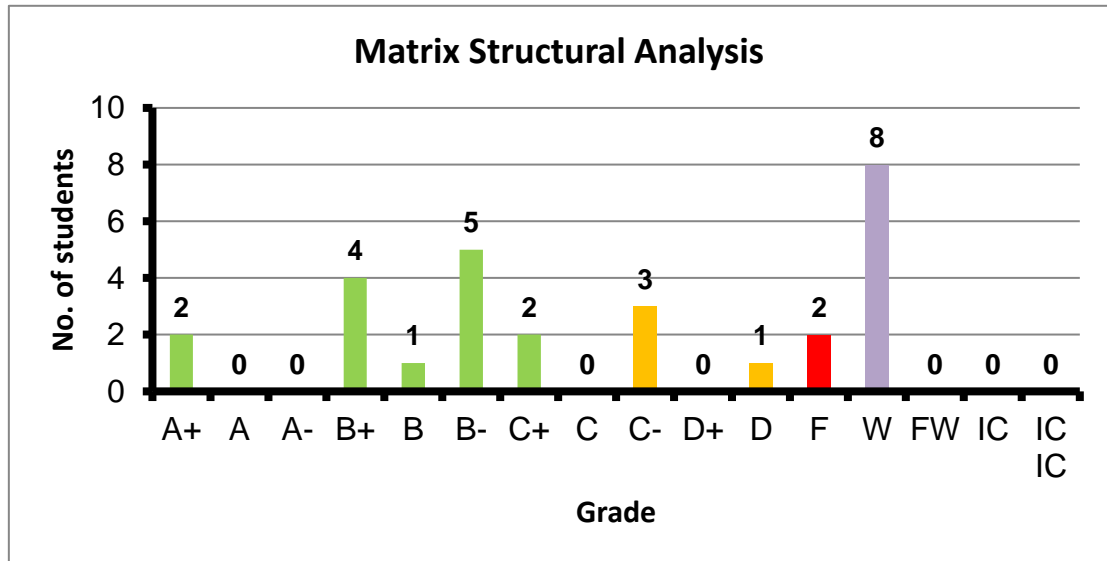
Course: Graduation Project-2  
 Programs: STE  
 Code: STEN481  
 Student: 52  
 A+ to C: 100%  
 C- to D: 0%  
 F: 0  
 W: 0  
 Average: 3.75  
 Std Dev: 3.80



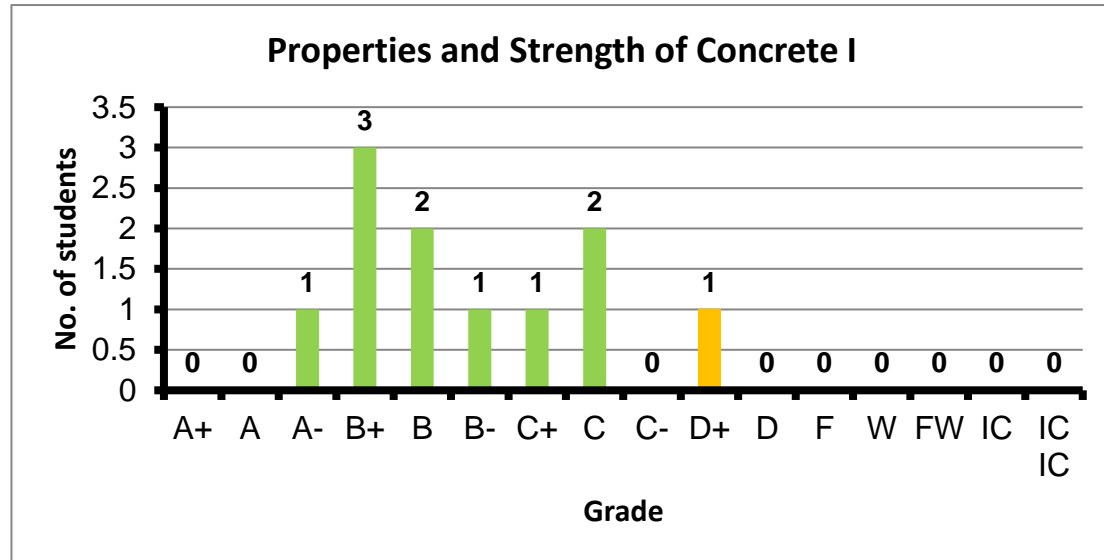
Course: Structural Analysis-3  
 Programs: STE  
 Code: STRN107  
 Student: 19  
 A+ to C: 79%  
 C- to D: 16%  
 F: 0  
 W: 1  
 Average: 2.56  
 Std Dev: 2.69



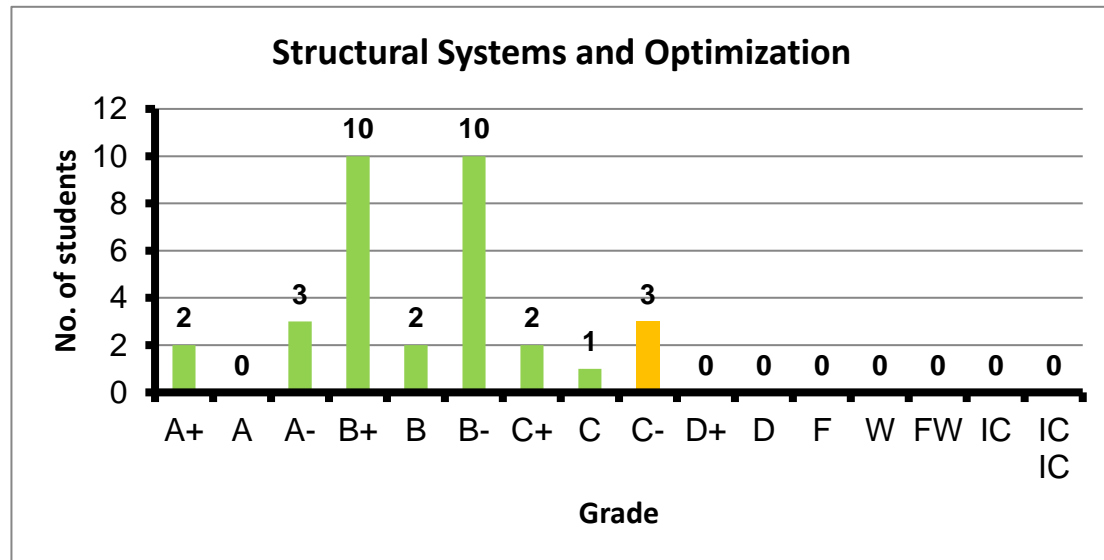
Course: Matrix Structural Analysis  
 Programs: STE  
 Code: STRN305  
 Student: 28  
 A+ to C: 50%  
 C- to D: 14%  
 F: 2  
 W: 8  
 Average: 2.42  
 Std Dev: 2.46



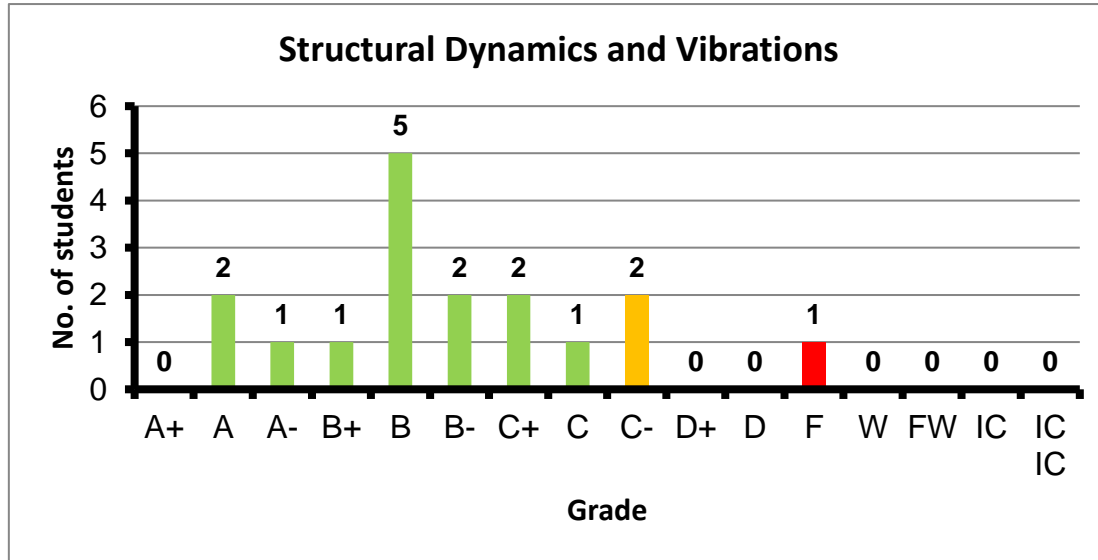
Course: Properties and Strength of Concrete II  
 Programs: STE  
 Code: STRN306  
 Student: 11  
 A+ to C: 91%  
 C- to D: 9%  
 F: 0  
 W: 0  
 Average: 2.73  
 Std Dev: 2.94



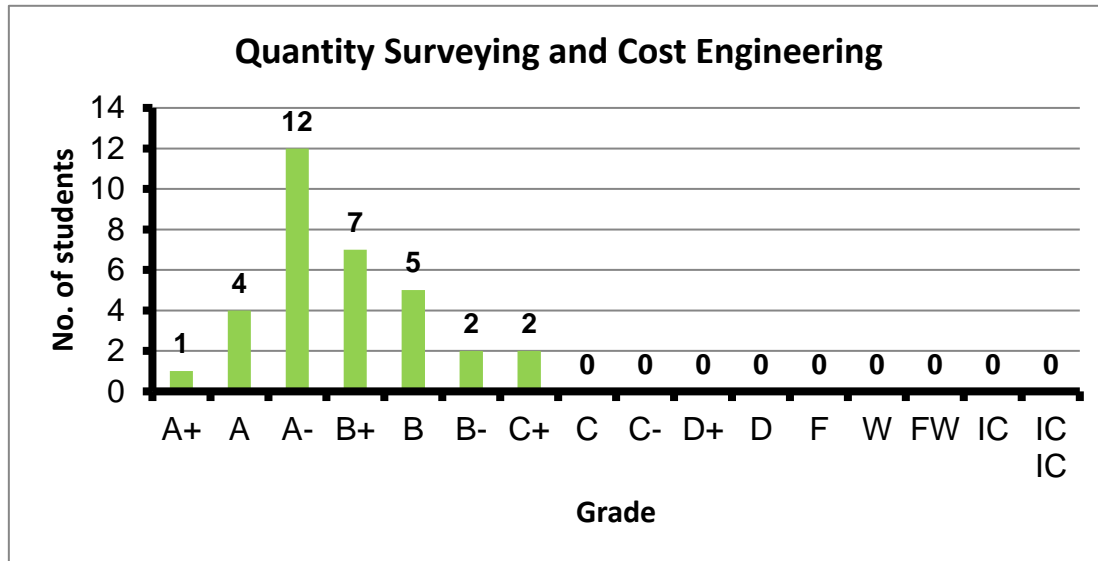
Course: Structural Systems and Optimization  
 Programs: STE  
 Code: STRN308  
 Student: 33  
 A+ to C: 91%  
 C- to D: 9%  
 F: 0  
 W: 0  
 Average: 2.93  
 Std Dev: 3.04



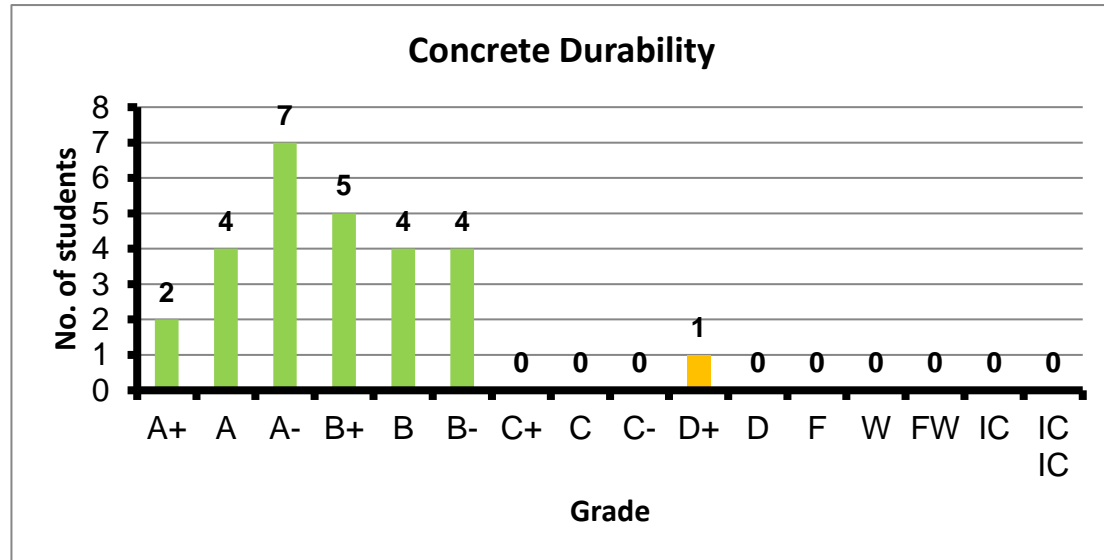
Course: Structural Dynamics and Vibrations  
 Programs: STE  
 Code: STRN408  
 Student: 17  
 A+ to C: 82%  
 C- to D: 12%  
 F: 1  
 W: 0  
 Average: 2.67  
 Std Dev: 2.92



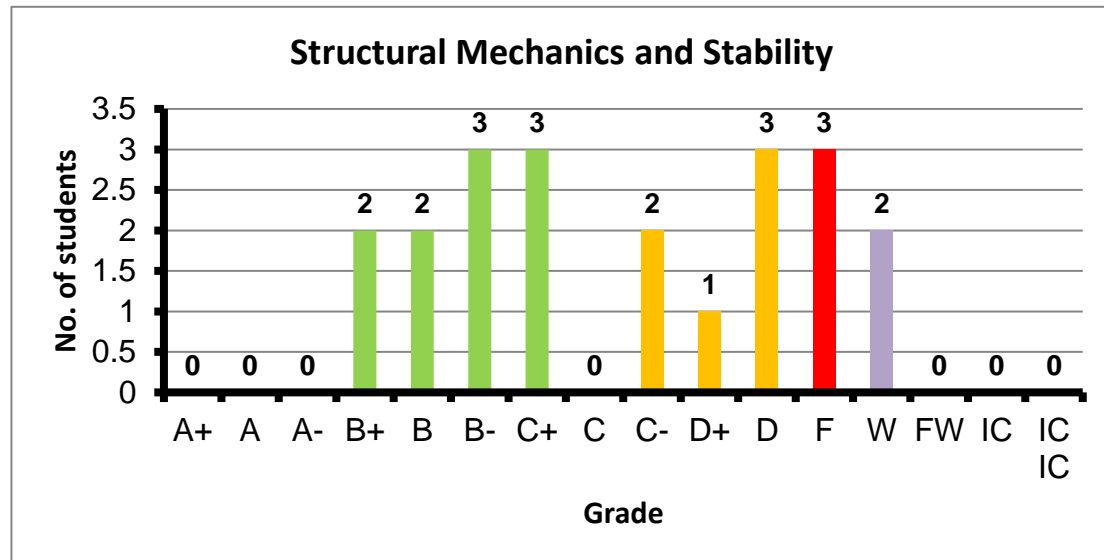
Course: Quantity Surveying and Cost Engineering  
 Programs: STE  
 Code: STRN419  
 Student: 33  
 A+ to C: 100%  
 C- to D: 0%  
 F: 0  
 W: 0  
 Average: 3.41  
 Std Dev: 3.49



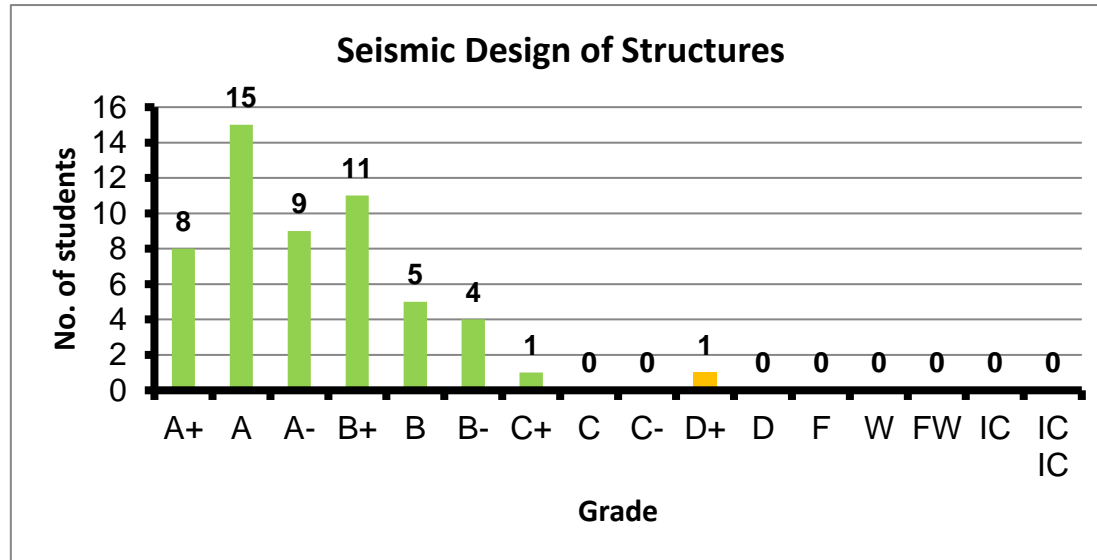
Course: Concrete Durability  
 Programs: STE  
 Code: STRN431  
 Student: 27  
 A+ to C: 96%  
 C- to D: 4%  
 F: 0  
 W: 0  
 Average: 3.36  
 Std Dev: 3.47



Course: Structural Mechanics and Stability  
 Programs: STE  
 Code: STRN433  
 Student: 21  
 A+ to C: 48%  
 C- to D: 29%  
 F: 3  
 W: 2  
 Average: 1.86  
 Std Dev: 2.13



Course: Seismic Design of Structures  
 Programs: STE  
 Code: STRN437  
 Student: 54  
 A+ to C: 98%  
 C- to D: 2%  
 F: 0  
 W: 0  
 Average: 3.54  
 Std Dev: 3.61



Course: Advanced Topics in Structural Engineering  
 Programs: STE  
 Code: STRN462  
 Student: 13  
 A+ to C: 31%  
 C- to D: 15%  
 F: 6  
 W: 1  
 Average: 1.17  
 Std Dev: 1.77

