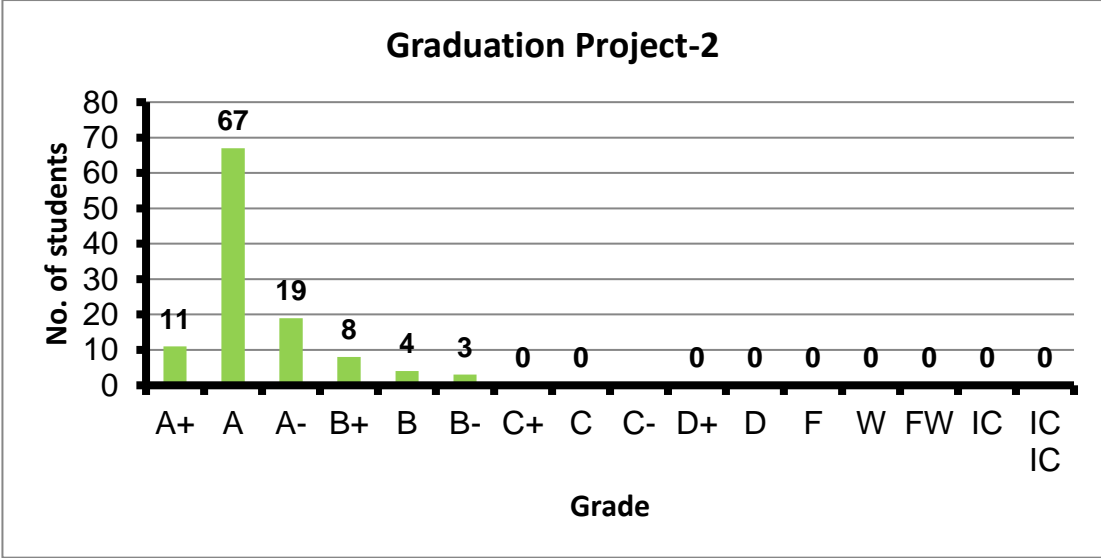
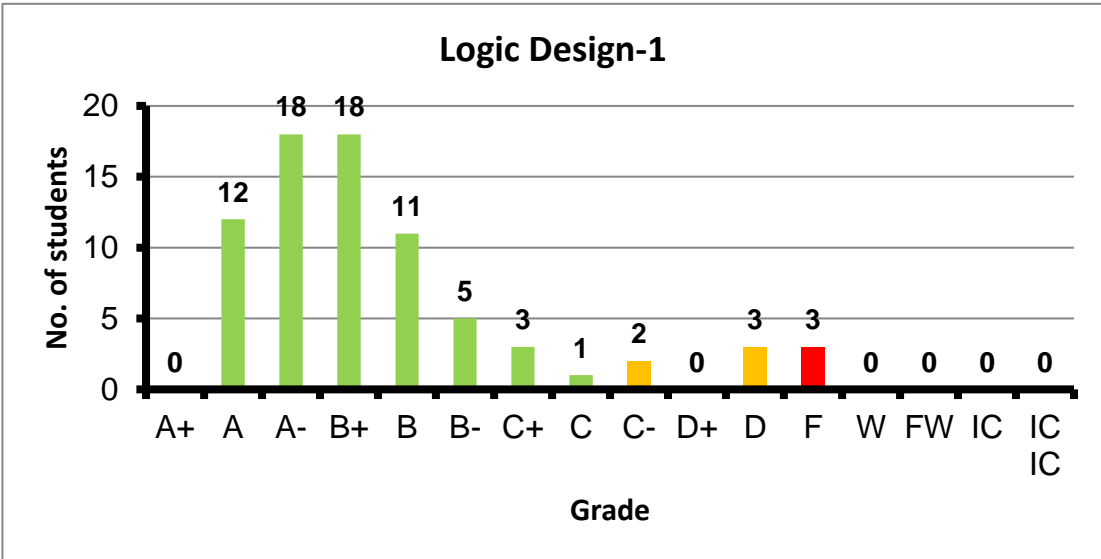


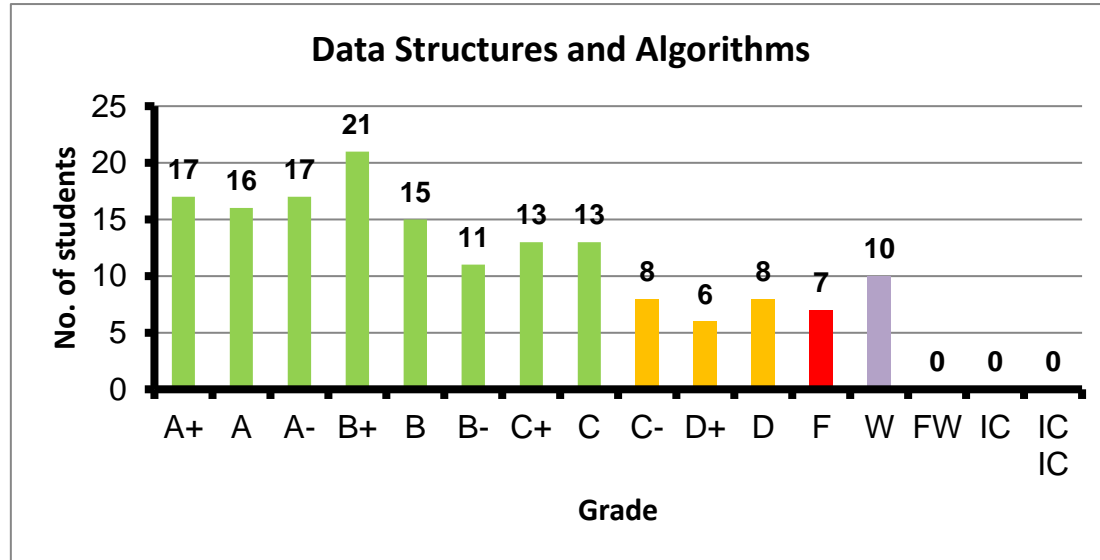
Course: Graduation Project-2
 Programs: CCE-C
 Code: CCEN481
 Student: 112
 A+ to C: 100%
 C- to D: 0%
 F: 0
 W: 0
 Average: 3.83
 Std Dev: 3.86



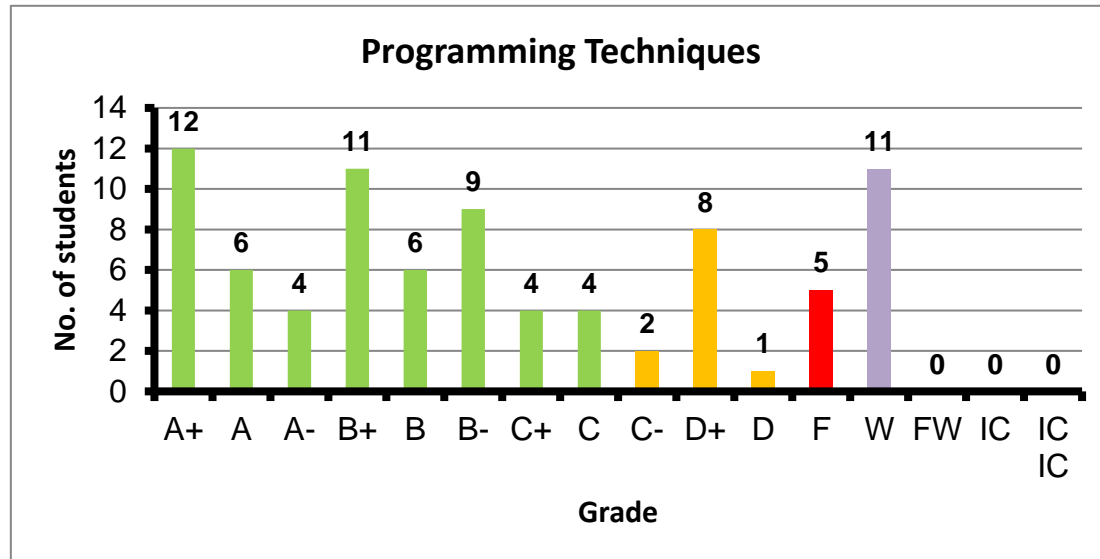
Course: Logic Design-1
 Programs: CCE-C
 Code: CMPN101
 Student: 76
 A+ to C: 89%
 C- to D: 7%
 F: 3
 W: 0
 Average: 3.10
 Std Dev: 3.26



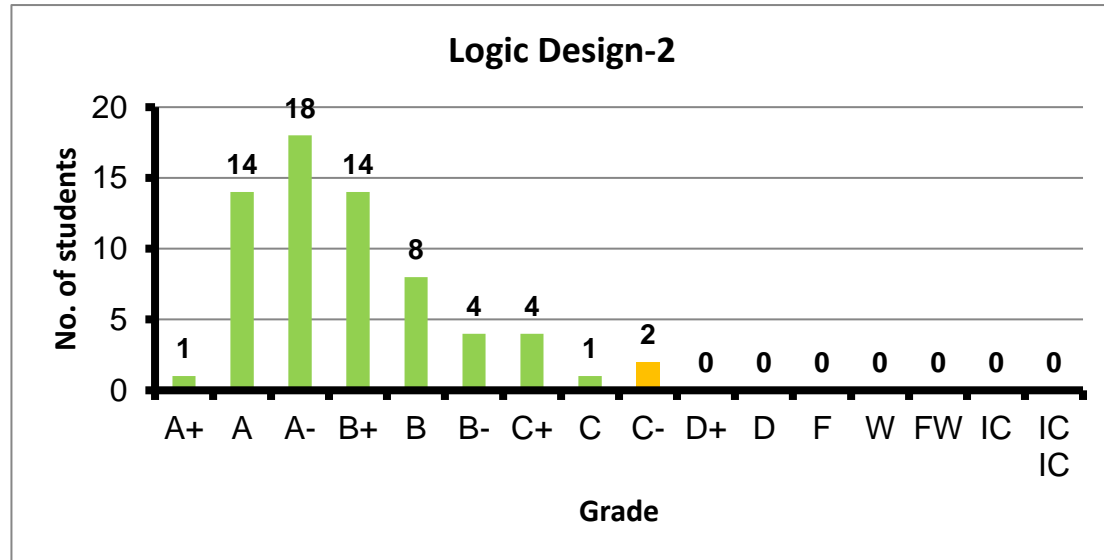
Course: Data Structures and Algorithms
 Programs: CCE-C
 Code: CMPN102
 Student: 162
 A+ to C: 76%
 C- to D: 14%
 F: 7
 W: 10
 Average: 2.79
 Std Dev: 2.95



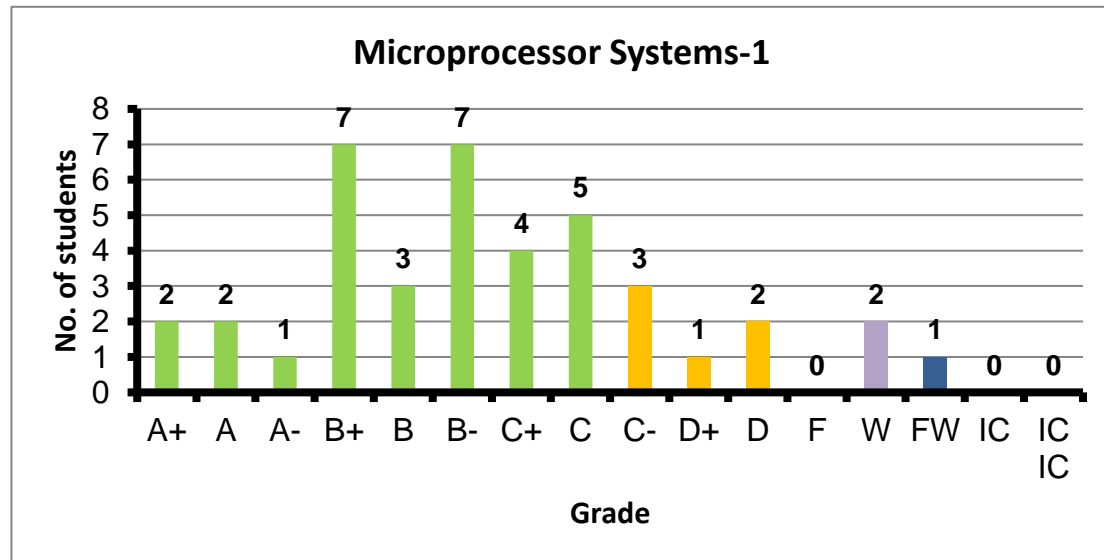
Course: Programming Techniques
 Programs: CCE-C
 Code: CMPN103
 Student: 83
 A+ to C: 67%
 C- to D: 13%
 F: 5
 W: 11
 Average: 2.75
 Std Dev: 2.88



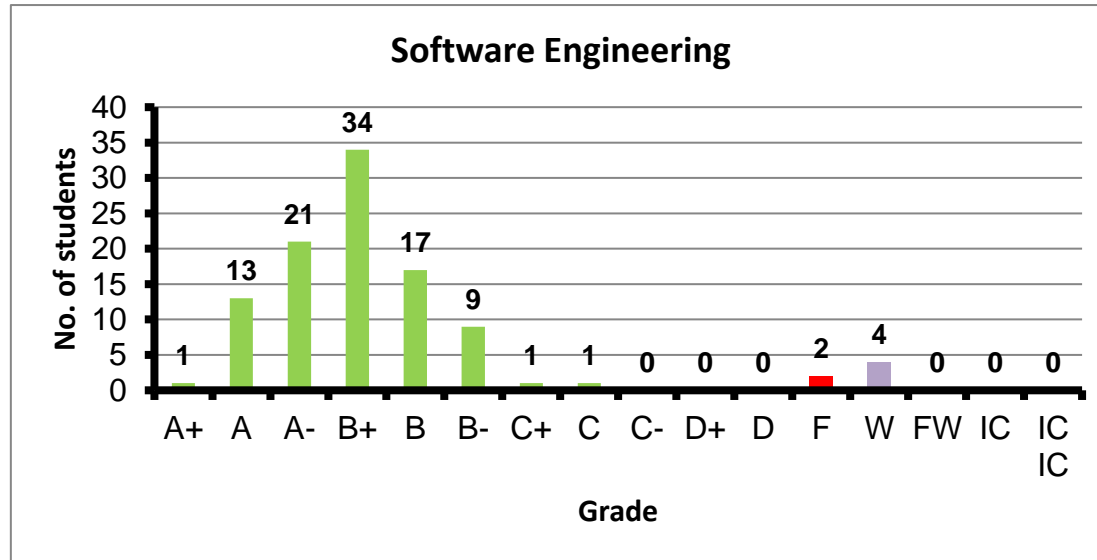
Course: Logic Design-2
 Programs: CCE-C
 Code: CMPN111
 Student: 66
 A+ to C: 97%
 C- to D: 3%
 F: 0
 W: 0
 Average: 3.37
 Std Dev: 3.44



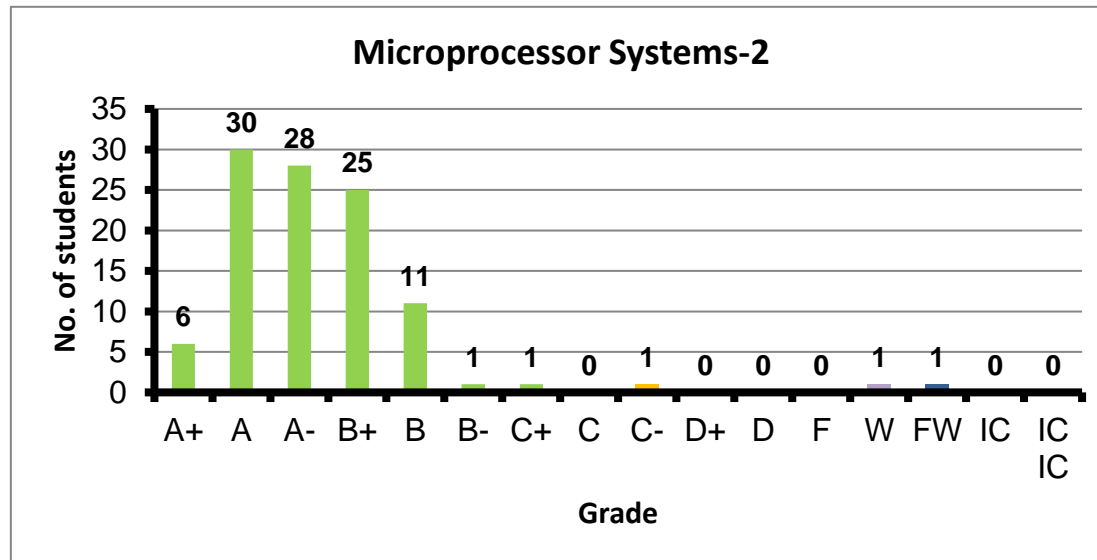
Course: Microprocessor Systems-1
 Programs: CCE-C
 Code: CMPN201
 Student: 40
 A+ to C: 78%
 C- to D: 15%
 F: 0
 W: 2
 Average: 2.66
 Std Dev: 2.77



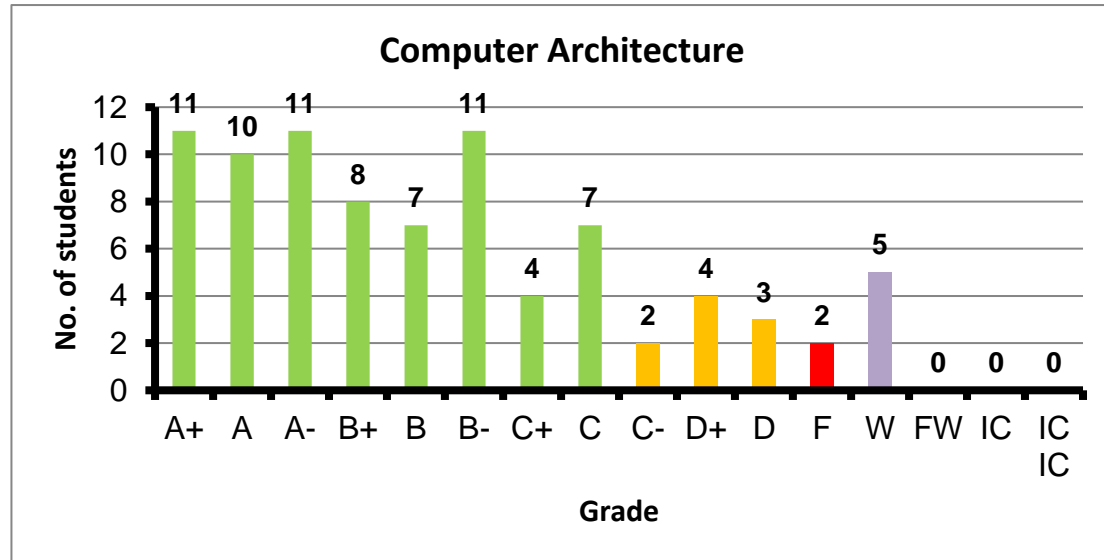
Course: Software Engineering
 Programs: CCE-C
 Code: CMPN203
 Student: 103
 A+ to C: 94%
 C- to D: 0%
 F: 2
 W: 4
 Average: 3.29
 Std Dev: 3.33



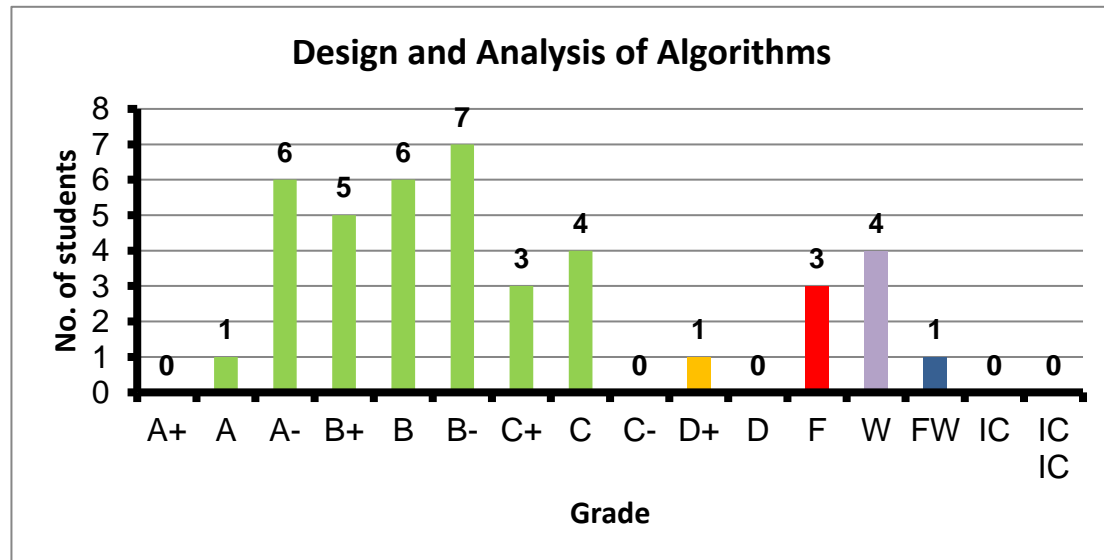
Course: Microprocessor Systems-2
 Programs: CCE-C
 Code: CMPN211
 Student: 105
 A+ to C: 97%
 C- to D: 1%
 F: 0
 W: 1
 Average: 3.59
 Std Dev: 3.62



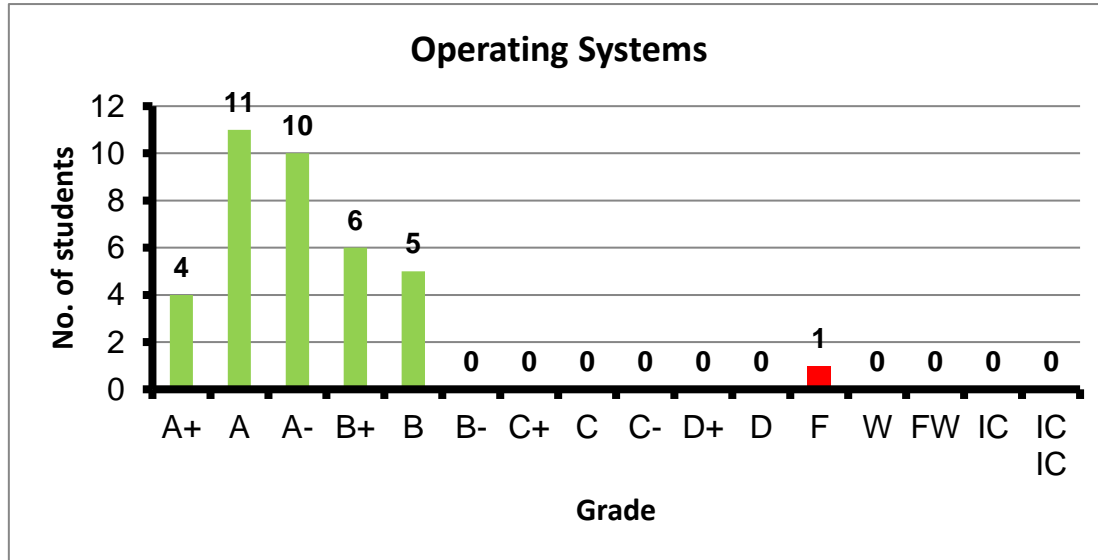
Course: Computer Architecture
 Programs: CCE-C
 Code: CMPN301
 Student: 85
 A+ to C: 81%
 C- to D: 11%
 F: 2
 W: 5
 Average: 2.96
 Std Dev: 3.09



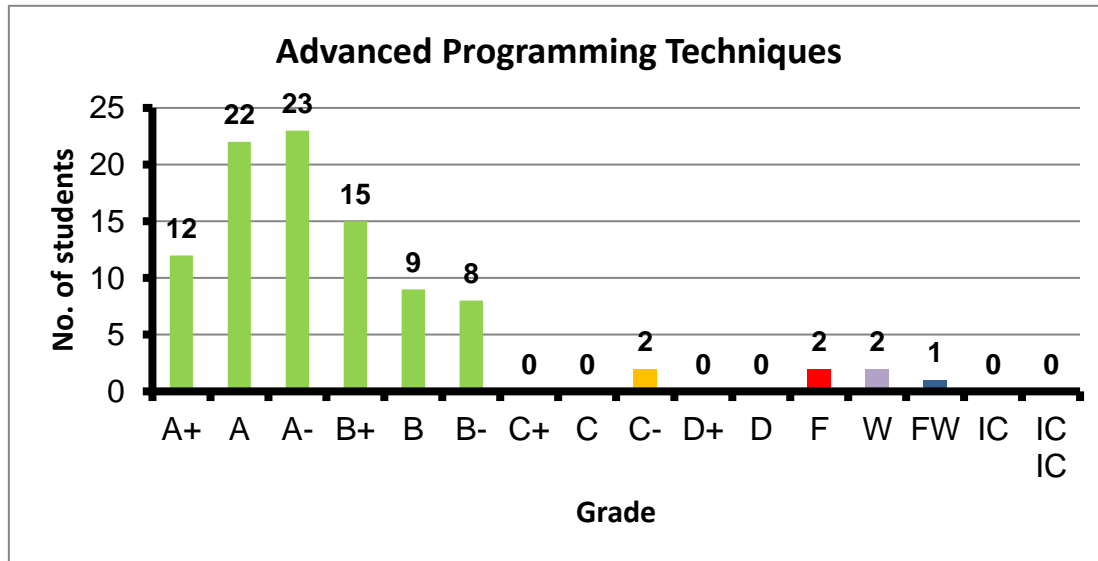
Course: Design and Analysis of Algorithms
 Programs: CCE-C
 Code: CMPN302
 Student: 41
 A+ to C: 78%
 C- to D: 2%
 F: 3
 W: 4
 Average: 2.66
 Std Dev: 2.79



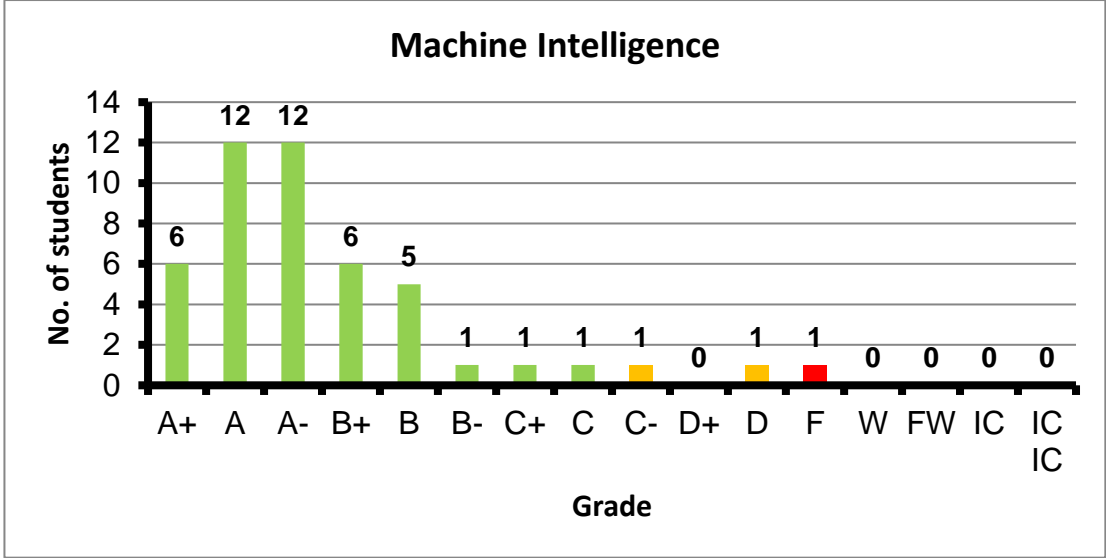
Course: Operating Systems
 Programs: CCE-C
 Code: CMPN303
 Student: 37
 A+ to C: 97%
 C- to D: 0%
 F: 1
 W: 0
 Average: 3.56
 Std Dev: 3.68



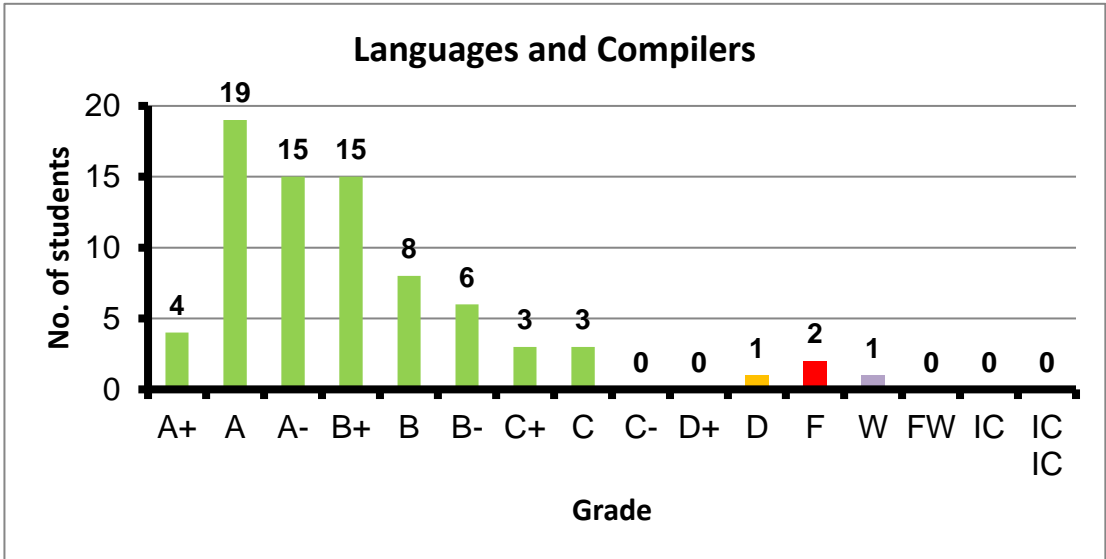
Course: Advanced Programming Techniques
 Programs: CCE-C
 Code: CMPN306
 Student: 96
 A+ to C: 93%
 C- to D: 2%
 F: 2
 W: 2
 Average: 3.47
 Std Dev: 3.54



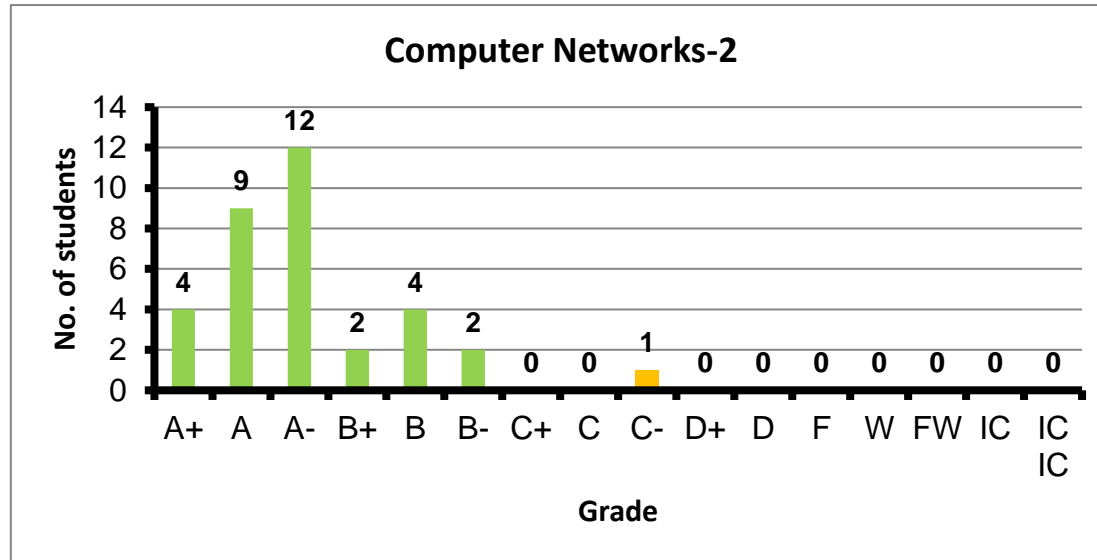
Course: Machine Intelligence
 Programs: CCE-C
 Code: CMPN402
 Student: 47
 A+ to C: 94%
 C- to D: 4%
 F: 1
 W: 0
 Average: 3.42
 Std Dev: 3.56



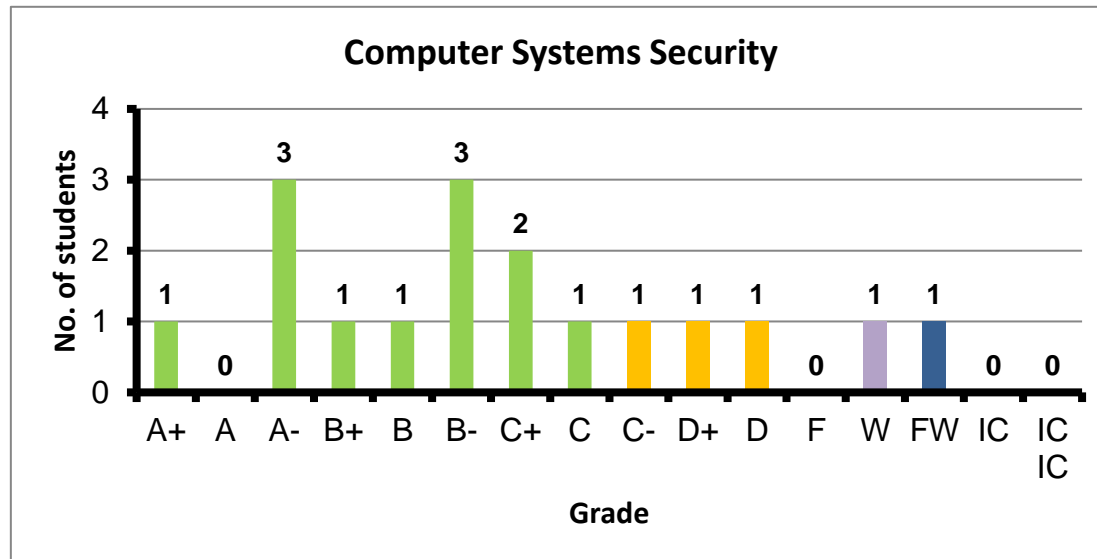
Course: Languages and Compilers
 Programs: CCE-C
 Code: CMPN403
 Student: 77
 A+ to C: 95%
 C- to D: 1%
 F: 2
 W: 1
 Average: 3.30
 Std Dev: 3.42



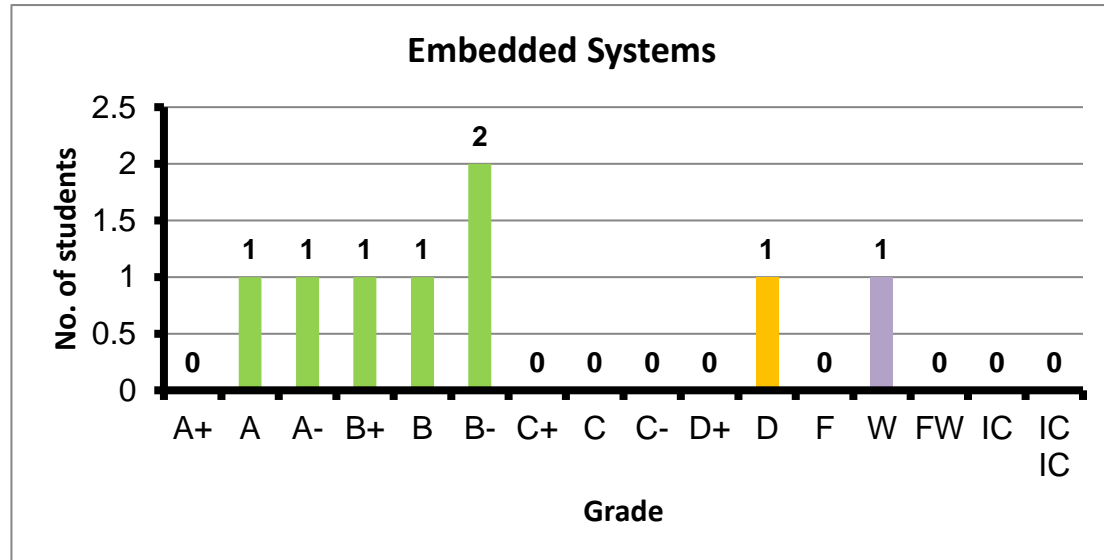
Course: Computer Networks-2
 Programs: CCE-C
 Code: CMPN415
 Student: 34
 A+ to C: 97%
 C- to D: 3%
 F: 0
 W: 0
 Average: 3.59
 Std Dev: 3.68



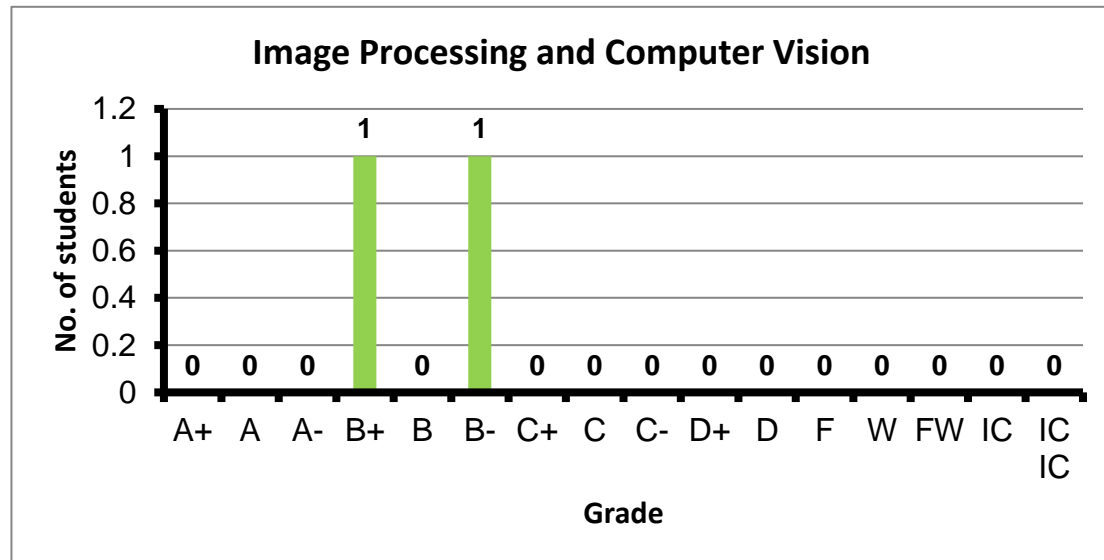
Course: Computer Systems Security
 Programs: CCE-C
 Code: CMPN426
 Student: 17
 A+ to C: 71%
 C- to D: 18%
 F: 0
 W: 1
 Average: 2.68
 Std Dev: 2.86



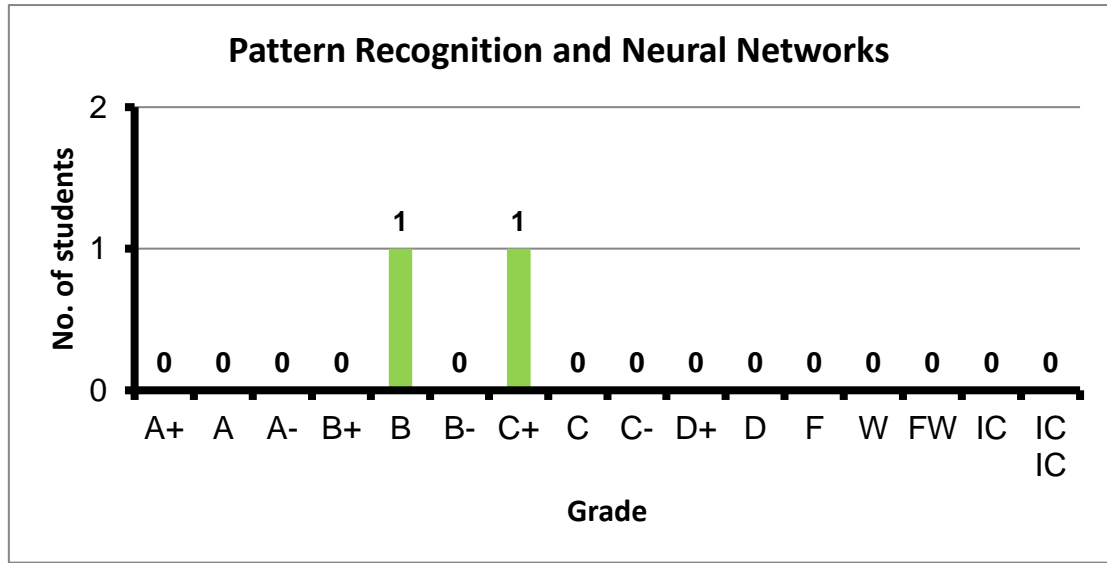
Course: Embedded Systems
 Programs: CCE-C
 Code: CMPN445
 Student: 8
 A+ to C: 75%
 C- to D: 13%
 F: 0
 W: 1
 Average: 2.91
 Std Dev: 3.17



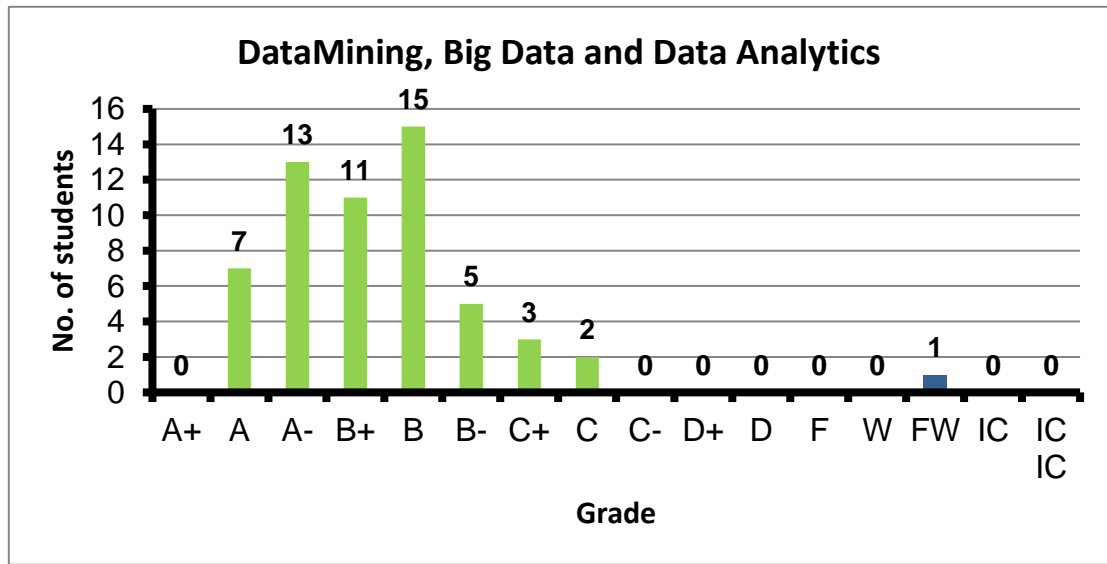
Course: Image Processing and Computer Vision
 Programs: CCE-C
 Code: CMPN446
 Student: 2
 A+ to C: 100%
 C- to D: 0%
 F: 0
 W: 0
 Average: 3.00
 Std Dev: 4.26



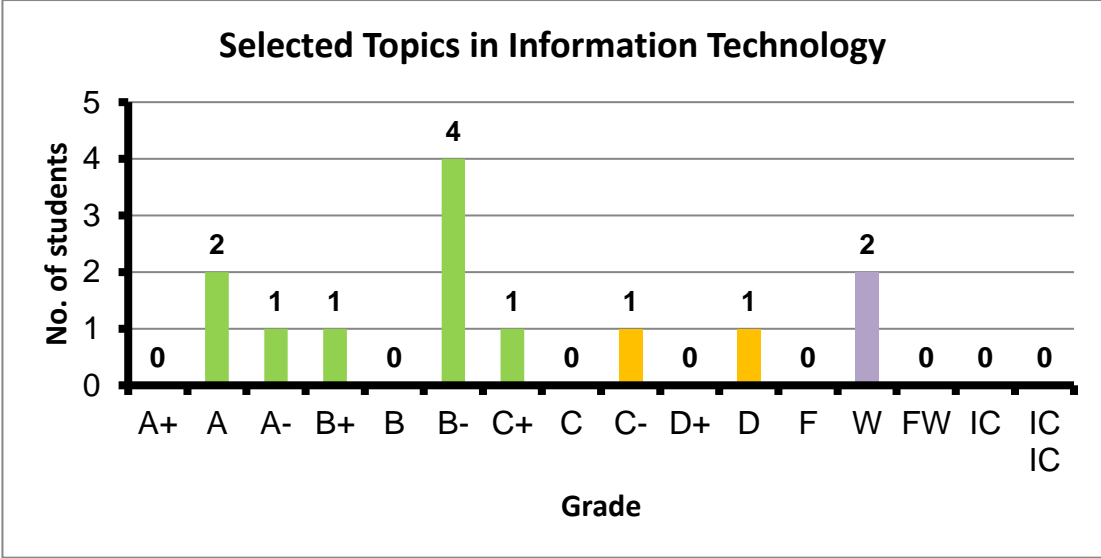
Course: Pattern Recognition and Neural Networks
 Programs: CCE-C
 Code: CMPN450
 Student: 2
 A+ to C: 100%
 C- to D: 0%
 F: 0
 W: 0
 Average: 2.65
 Std Dev: 3.78



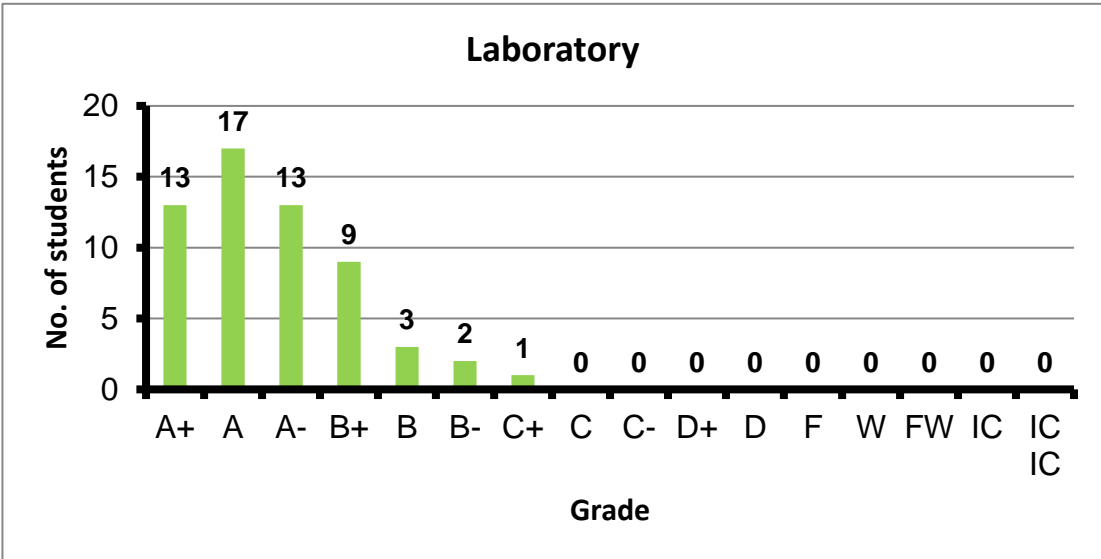
Course: DataMining, Big Data and Data Analytics
 Programs: CCE-C
 Code: CMPN451
 Student: 57
 A+ to C: 98%
 C- to D: 0%
 F: 0
 W: 0
 Average: 3.25
 Std Dev: 3.32



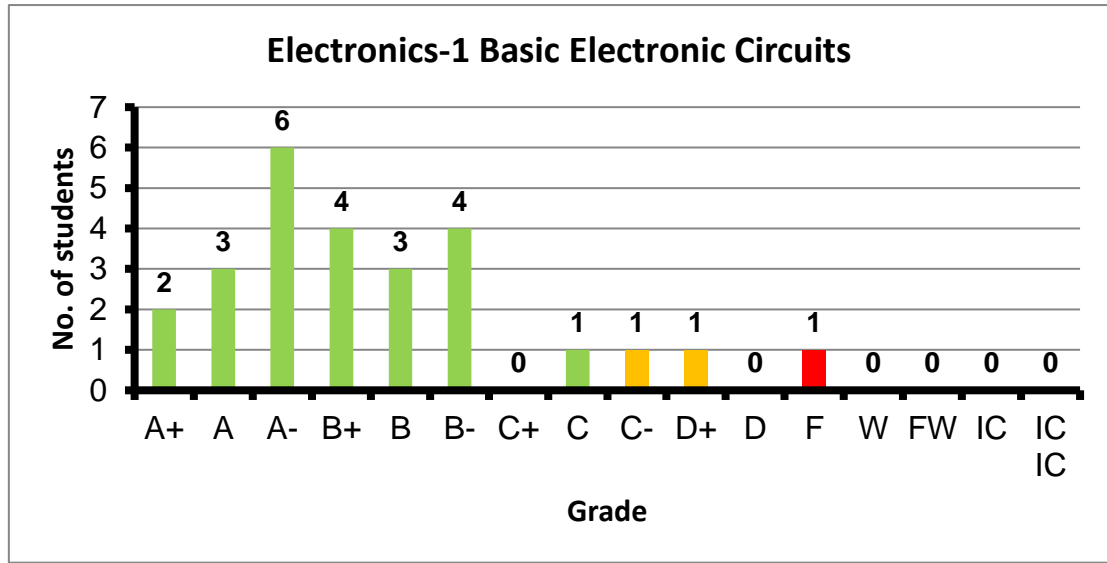
Course: Selected Topics in Information Technology
 Programs: CCE-C
 Code: CMPN462
 Student: 13
 A+ to C: 69%
 C- to D: 15%
 F: 0
 W: 2
 Average: 2.80
 Std Dev: 2.93



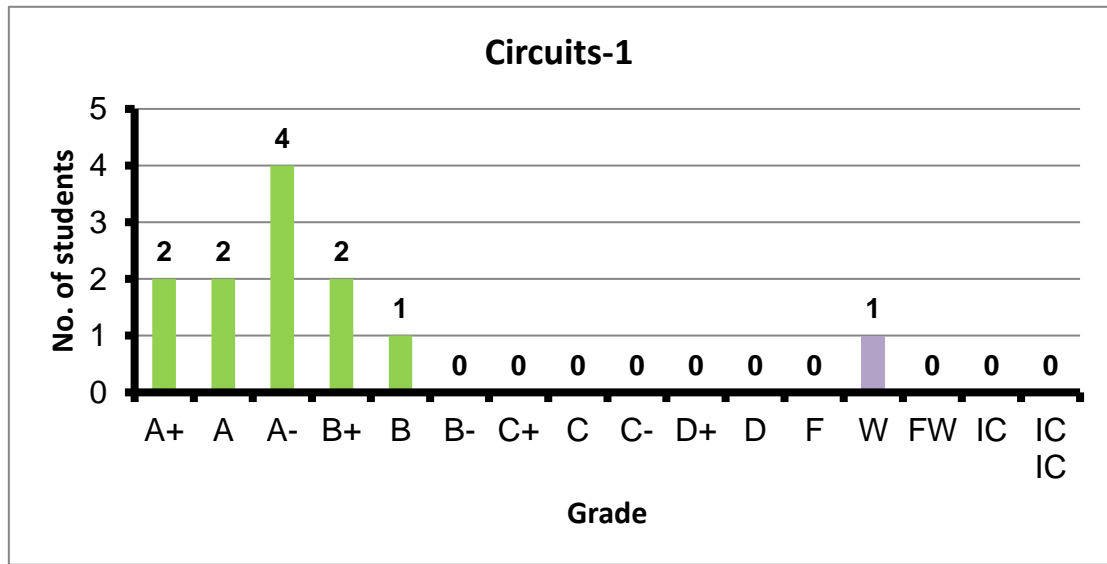
Course: Laboratory
 Programs: CCE-E
 Code: ELCN100
 Student: 58
 A+ to C: 100%
 C- to D: 0%
 F: 0
 W: 0
 Average: 3.70
 Std Dev: 3.75



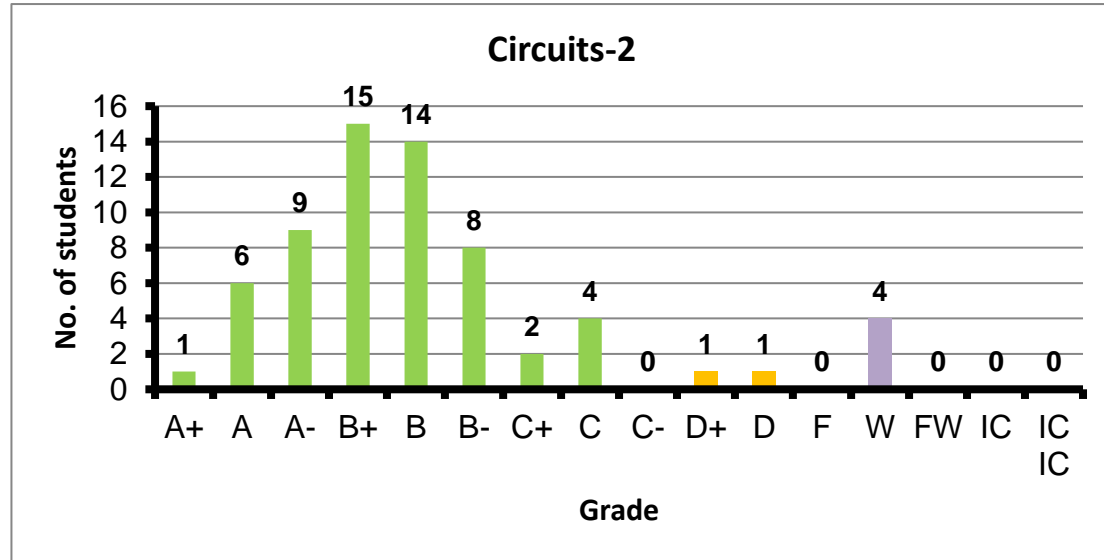
Course: Electronics-1 Basic Electronic Circuits
 Programs: CCE-E
 Code: ELCN101
 Student: 26
 A+ to C: 88%
 C- to D: 8%
 F: 1
 W: 0
 Average: 3.09
 Std Dev: 3.29



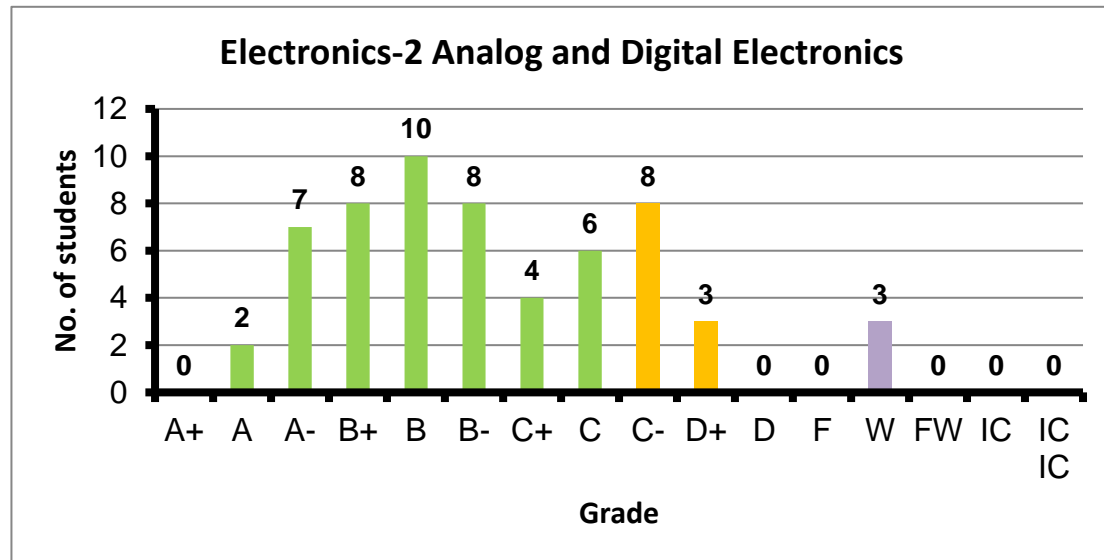
Course: Circuits-1
 Programs: CCE-E
 Code: ELCN102
 Student: 12
 A+ to C: 92%
 C- to D: 0%
 F: 0
 W: 1
 Average: 3.67
 Std Dev: 3.78



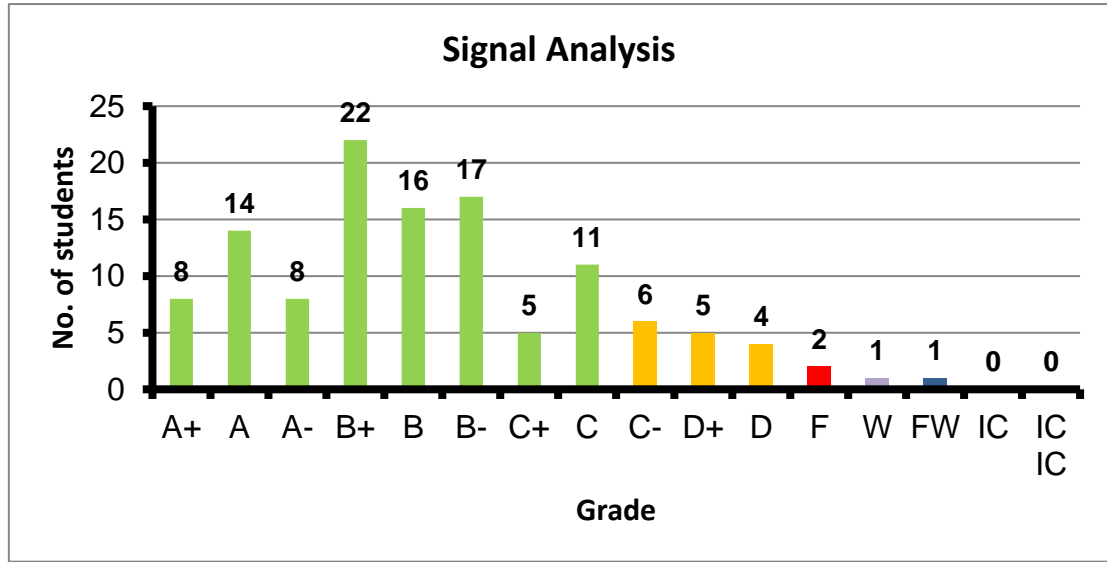
Course: Circuits-2
 Programs: CCE-E
 Code: ELCN112
 Student: 65
 A+ to C: 91%
 C- to D: 3%
 F: 0
 W: 4
 Average: 3.10
 Std Dev: 3.13



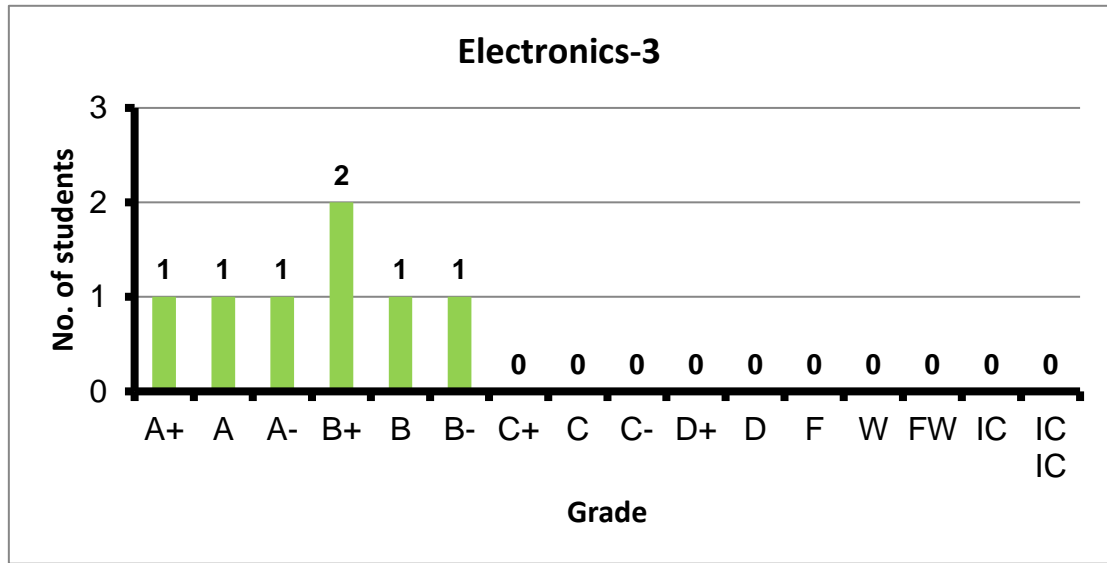
Course: Electronics-2 Analog and Digital Electronics
 Programs: CCE-E
 Code: ELCN201
 Student: 59
 A+ to C: 76%
 C- to D: 19%
 F: 0
 W: 3
 Average: 2.69
 Std Dev: 2.77



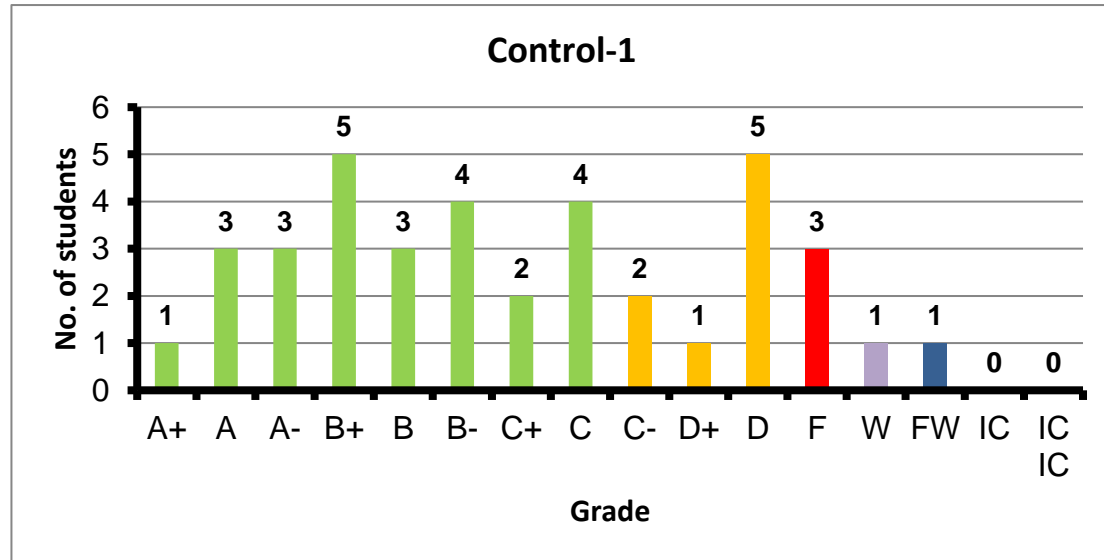
Course: Signal Analysis
 Programs: CCE-E
 Code: ELCN203
 Student: 120
 A+ to C: 84%
 C- to D: 13%
 F: 2
 W: 1
 Average: 2.87
 Std Dev: 3.02



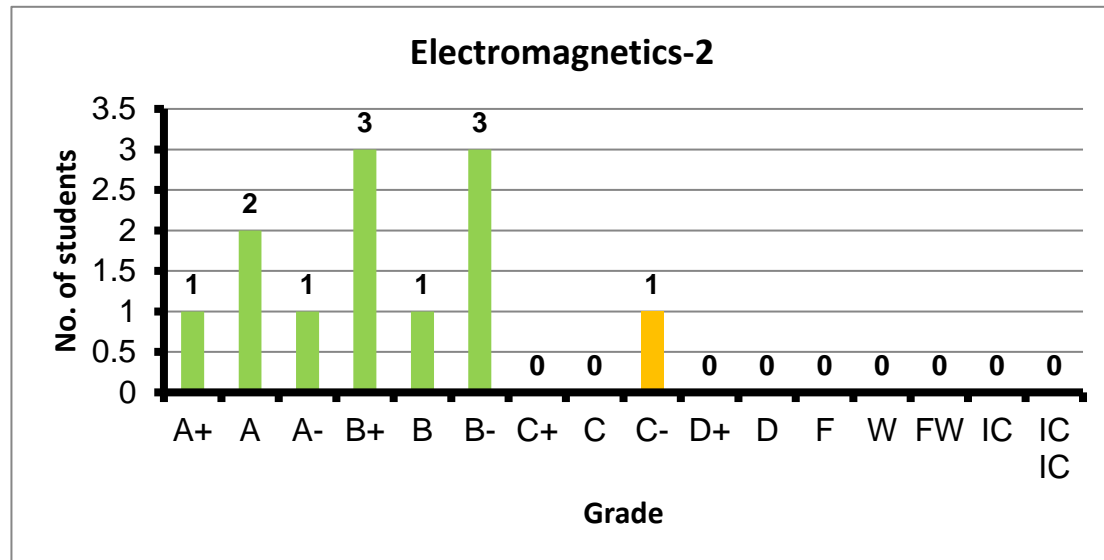
Course: Electronics-3
 Programs: CCE-E
 Code: ELCN301
 Student: 7
 A+ to C: 100%
 C- to D: 0%
 F: 0
 W: 0
 Average: 3.43
 Std Dev: 3.74



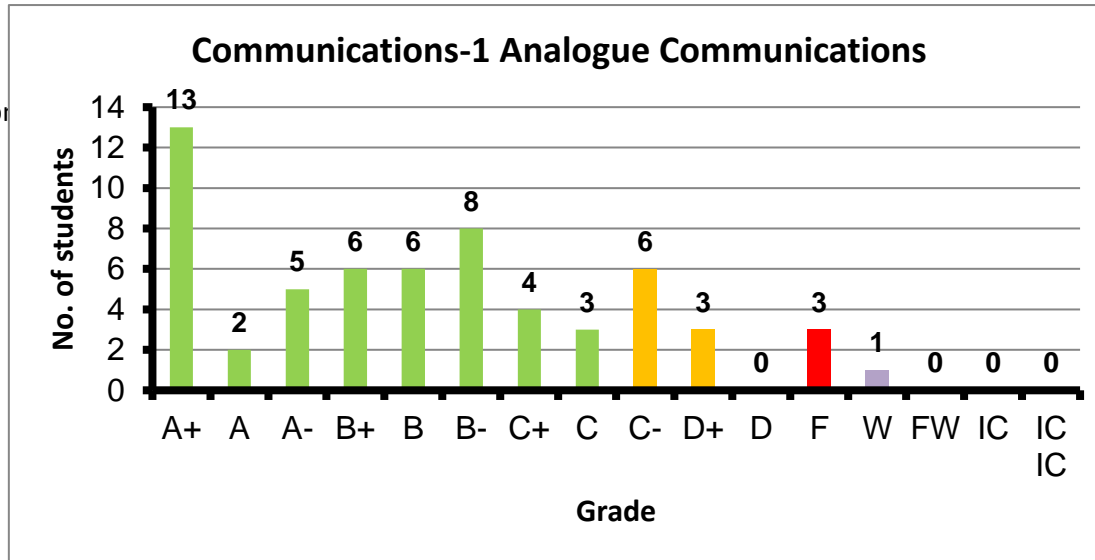
Course: Control-1
 Programs: CCE-E
 Code: ELCN304
 Student: 38
 A+ to C: 66%
 C- to D: 21%
 F: 3
 W: 1
 Average: 2.38
 Std Dev: 2.67



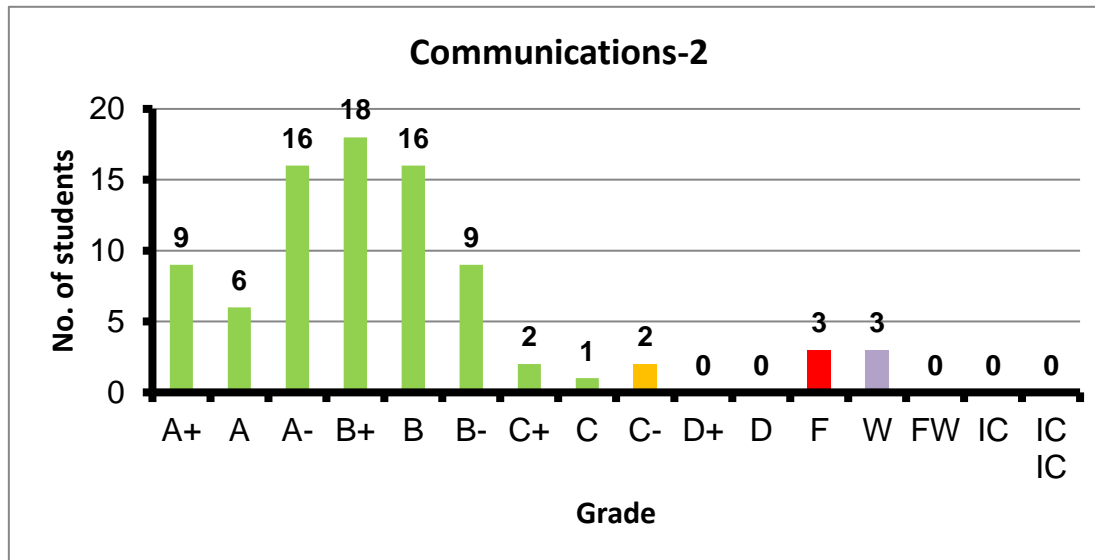
Course: Electromagnetics-2
 Programs: CCE-E
 Code: ELCN305
 Student: 12
 A+ to C: 92%
 C- to D: 8%
 F: 0
 W: 0
 Average: 3.20
 Std Dev: 3.41



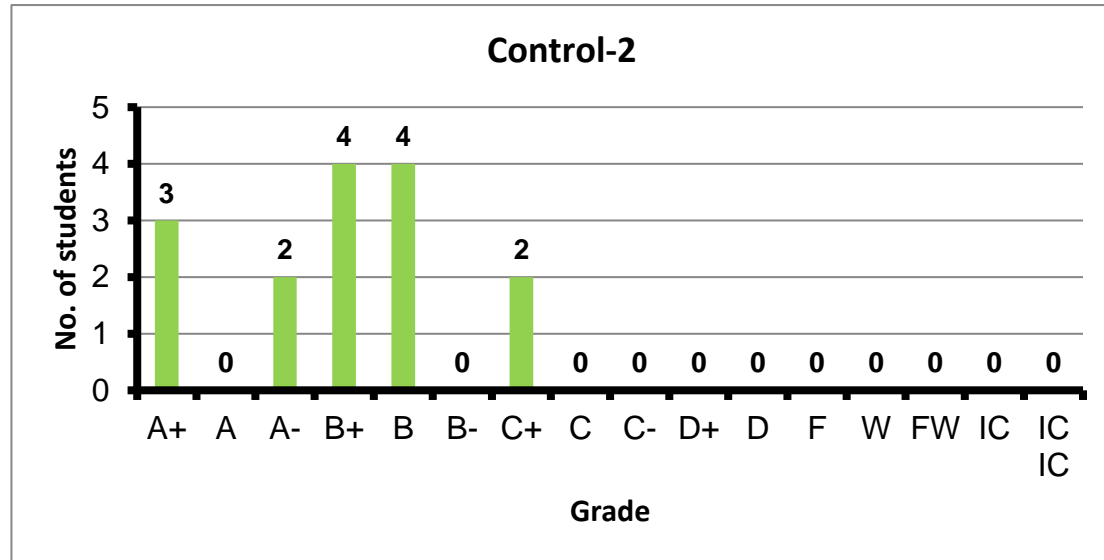
Course: Communications-1 Analogue Communication
 Programs: CCE-E
 Code: ELCN306
 Student: 60
 A+ to C: 78%
 C- to D: 15%
 F: 3
 W: 1
 Average: 2.84
 Std Dev: 3.04



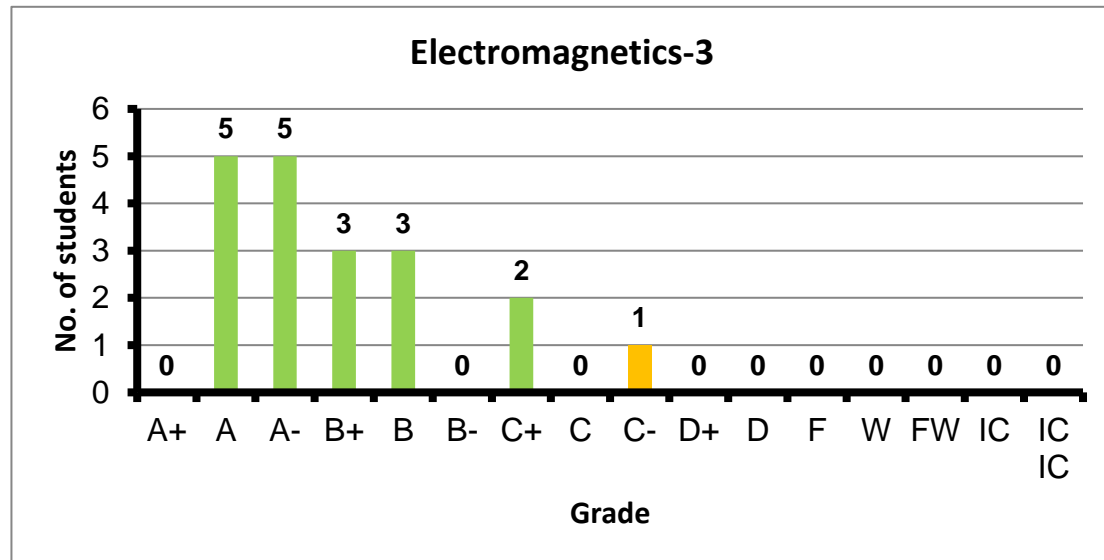
Course: Communications-2
 Programs: CCE-E
 Code: ELCN316
 Student: 85
 A+ to C: 91%
 C- to D: 2%
 F: 3
 W: 3
 Average: 3.18
 Std Dev: 3.27



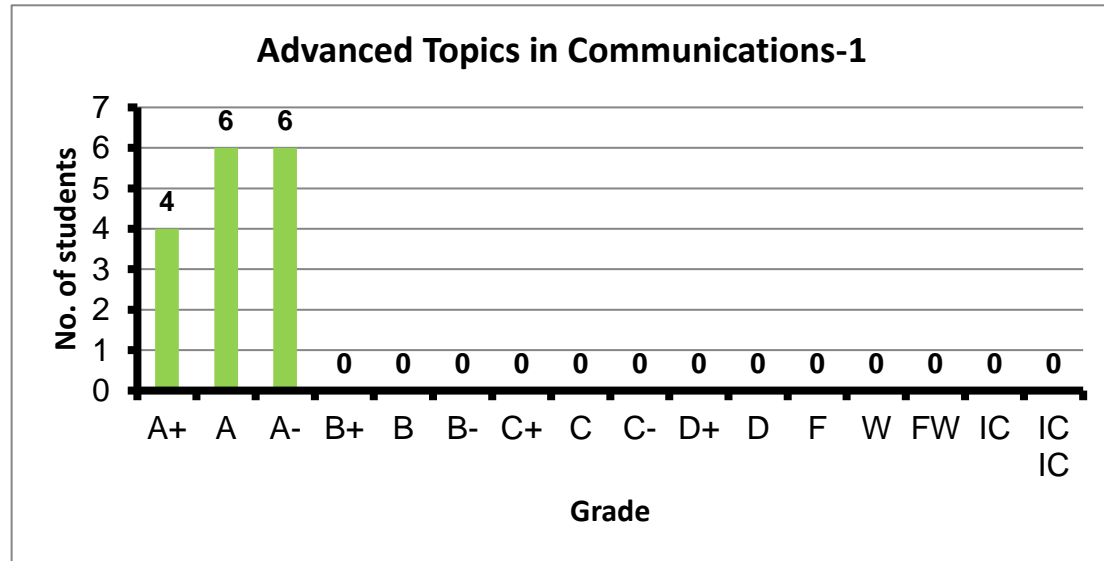
Course: Control-2
 Programs: CCE-E
 Code: ELCN404
 Student: 15
 A+ to C: 100%
 C- to D: 0%
 F: 0
 W: 0
 Average: 3.28
 Std Dev: 3.44



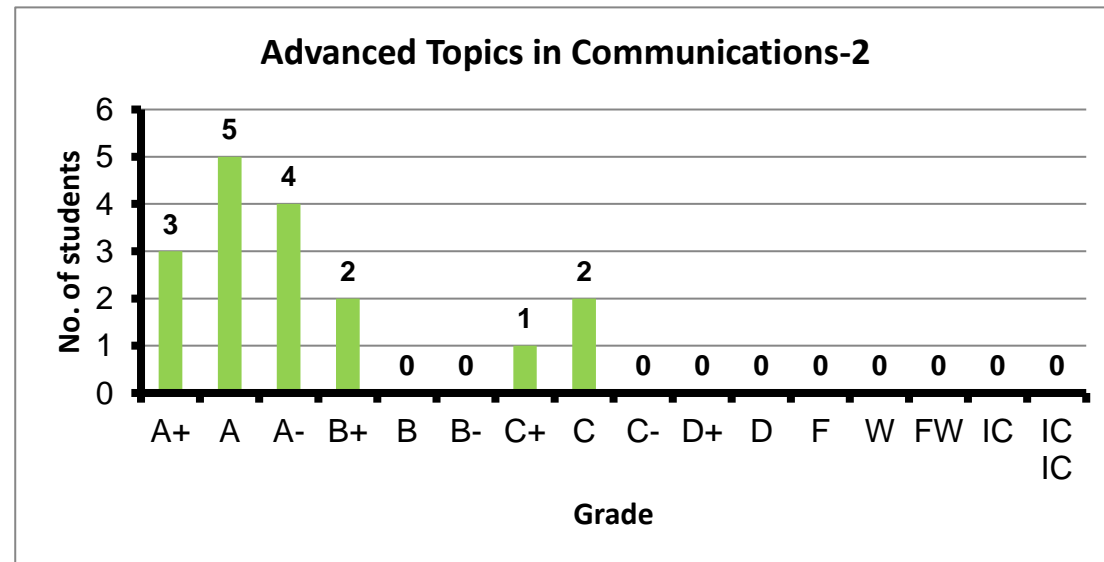
Course: Electromagnetics-3
 Programs: CCE-E
 Code: ELCN405
 Student: 19
 A+ to C: 95%
 C- to D: 5%
 F: 0
 W: 0
 Average: 3.35
 Std Dev: 3.51



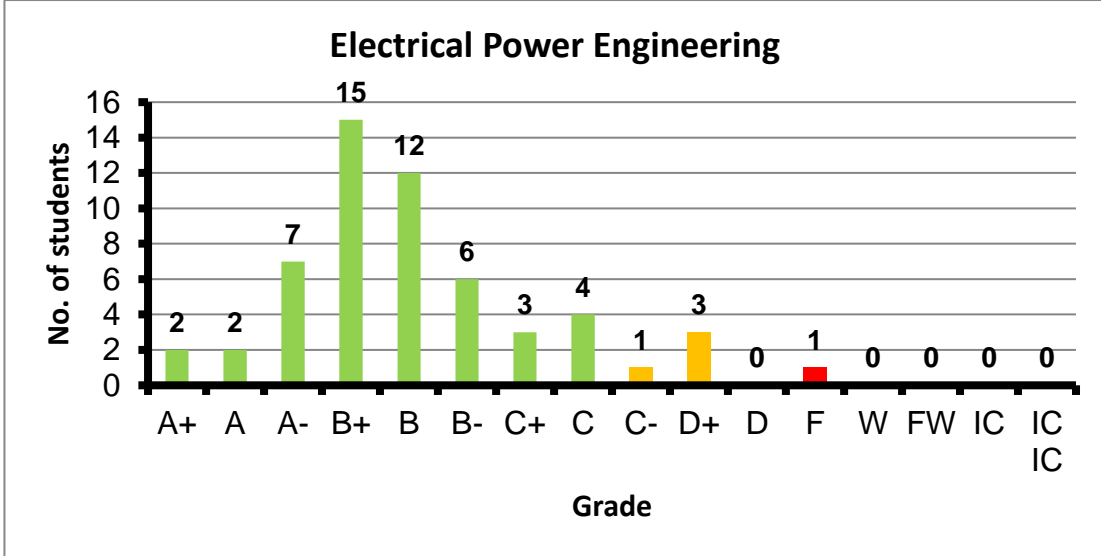
Course: Advanced Topics in Communications-1
 Programs: CCE-E
 Code: ELCN446
 Student: 16
 A+ to C: 100%
 C- to D: 0%
 F: 0
 W: 0
 Average: 3.89
 Std Dev: 4.02



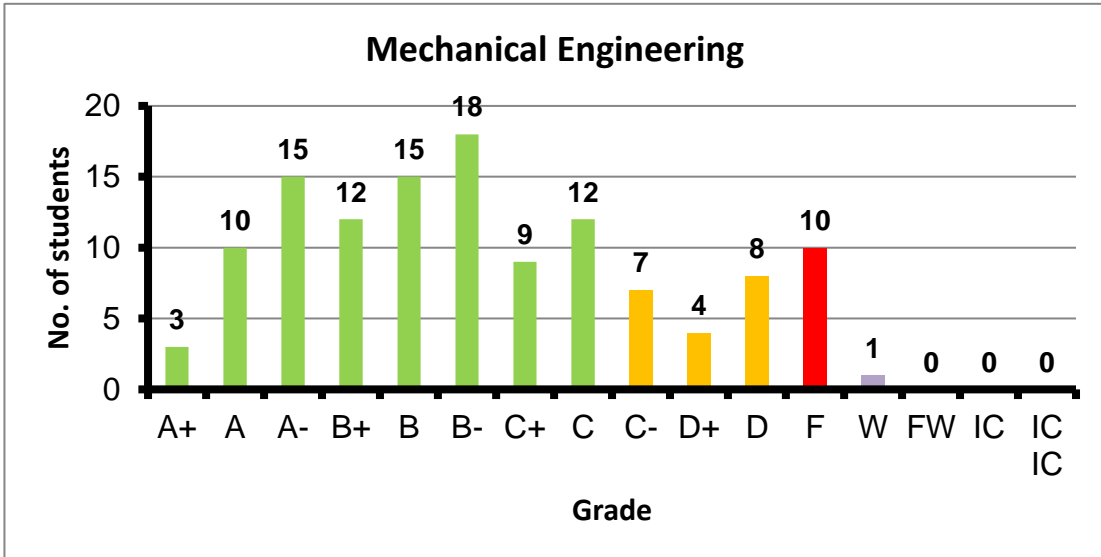
Course: Advanced Topics in Communications-2
 Programs: CCE-E
 Code: ELCN456
 Student: 17
 A+ to C: 100%
 C- to D: 0%
 F: 0
 W: 0
 Average: 3.51
 Std Dev: 3.69



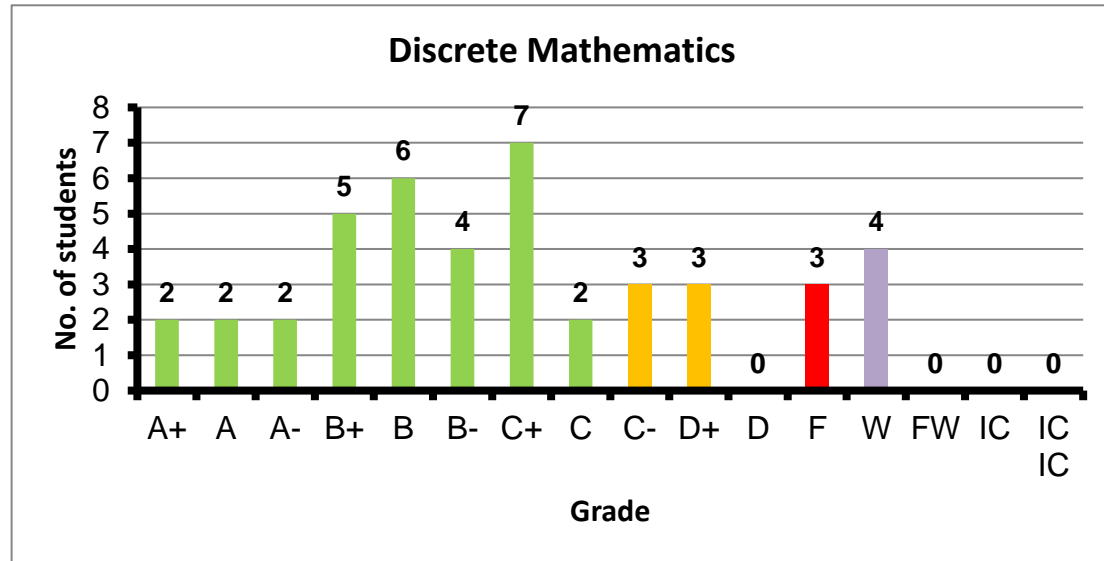
Course: Electrical Power Engineering
 Programs: CCE-E
 Code: EPMN125
 Student: 56
 A+ to C: 91%
 C- to D: 7%
 F: 1
 W: 0
 Average: 2.94
 Std Dev: 3.06



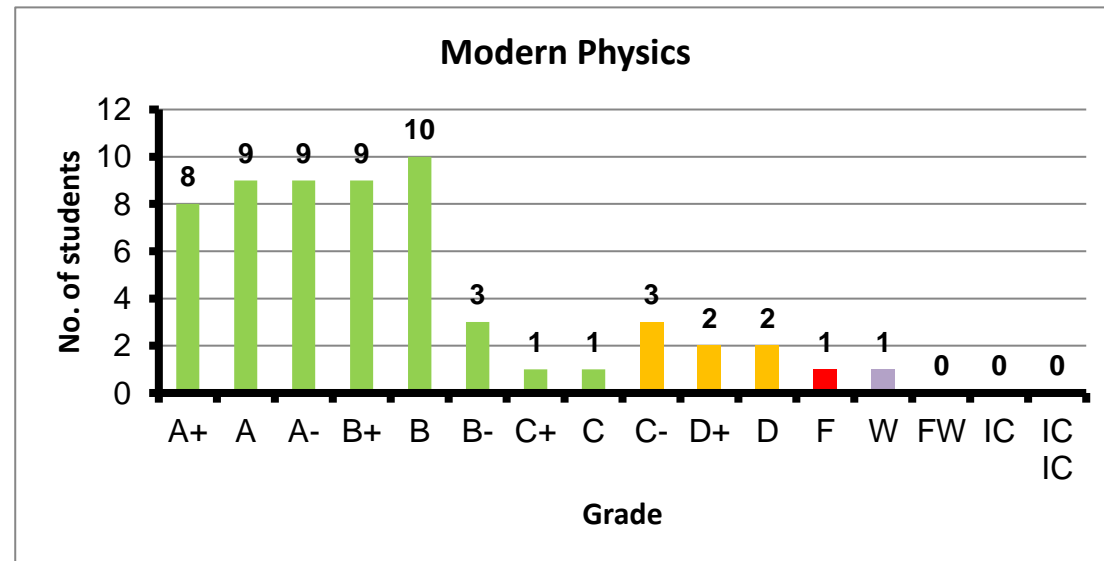
Course: Mechanical Engineering
 Programs: CCE
 Code: INTN125
 Student: 124
 A+ to C: 76%
 C- to D: 15%
 F: 10
 W: 1
 Average: 2.53
 Std Dev: 2.77



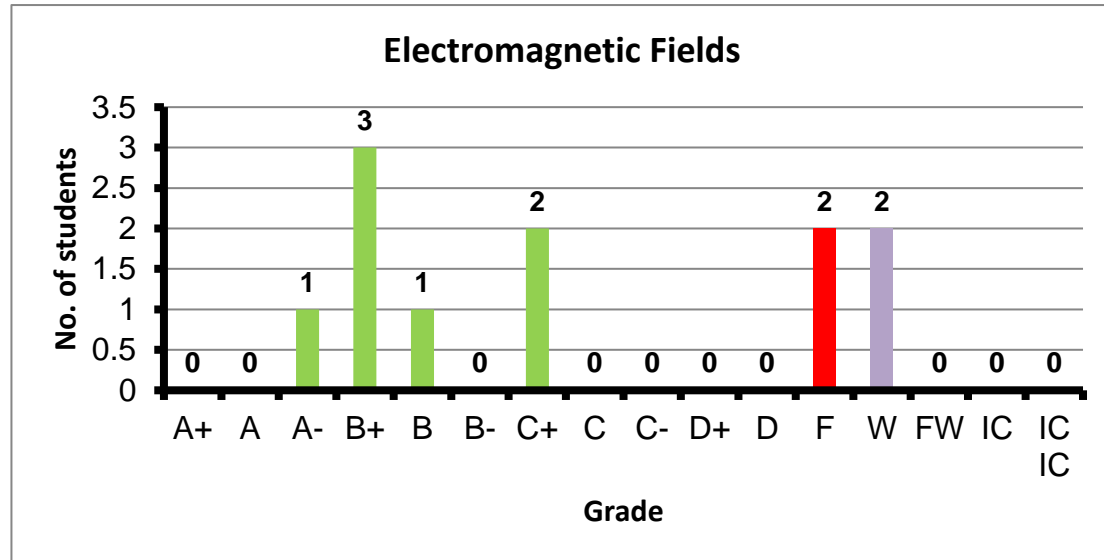
Course: Discrete Mathematics
 Programs: CCE-E
 Code: MTHN104
 Student: 43
 A+ to C: 70%
 C- to D: 14%
 F: 3
 W: 4
 Average: 2.52
 Std Dev: 2.67



Course: Modern Physics
 Programs: CCE-E
 Code: PHYN102
 Student: 59
 A+ to C: 85%
 C- to D: 12%
 F: 1
 W: 1
 Average: 3.16
 Std Dev: 3.30



Course: Electromagnetic Fields
 Programs: CCE-E
 Code: PHYN211
 Student: 11
 A+ to C: 64%
 C- to D: 0%
 F: 2
 W: 2
 Average: 2.36
 Std Dev: 2.70



Course: Electromagnetic for Computer Engineering
 Programs: CCE-C
 Code: PHYN212
 Student: 87
 A+ to C: 98%
 C- to D: 1%
 F: 0
 W: 1
 Average: 3.41
 Std Dev: 3.48

