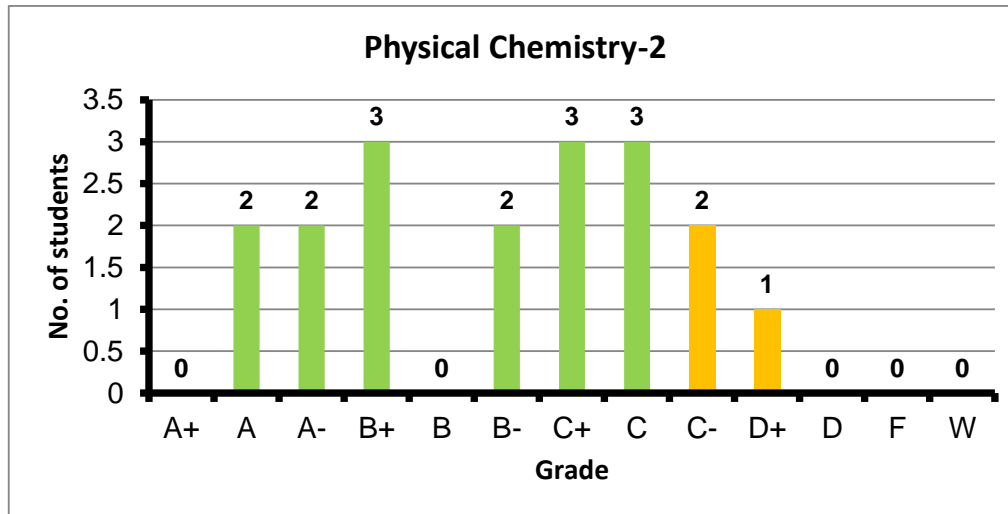
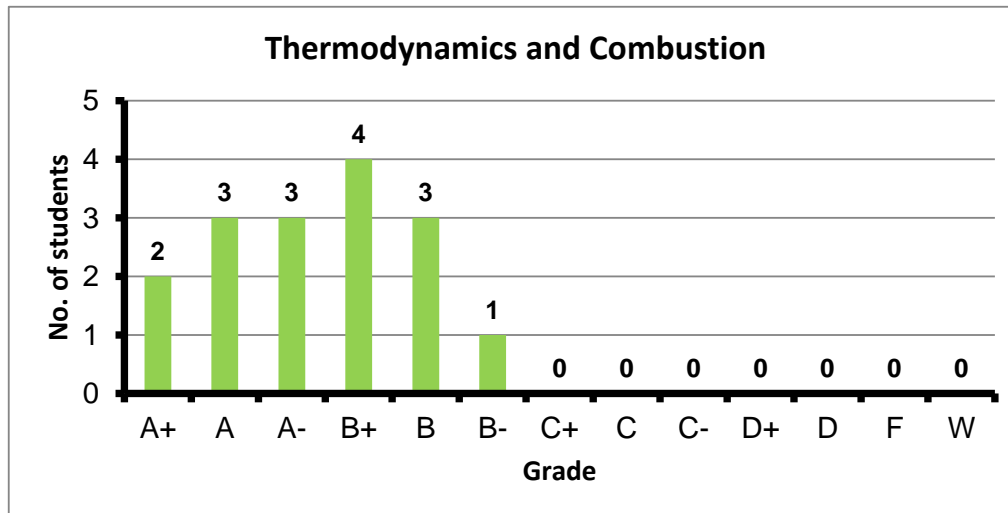


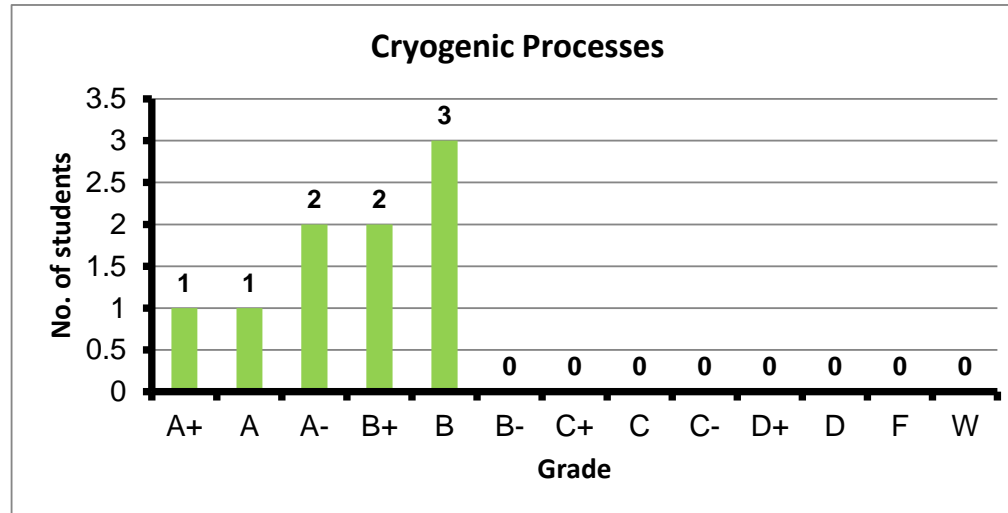
Course: Physical Chemistry-2  
 Programs: PPC  
 Code: CHEN104  
 Student: 18  
 A+ to C: 83%  
 C- to D: 17%  
 F: 0  
 W: 0  
 Average: 2.69  
 Std Dev: 0.85



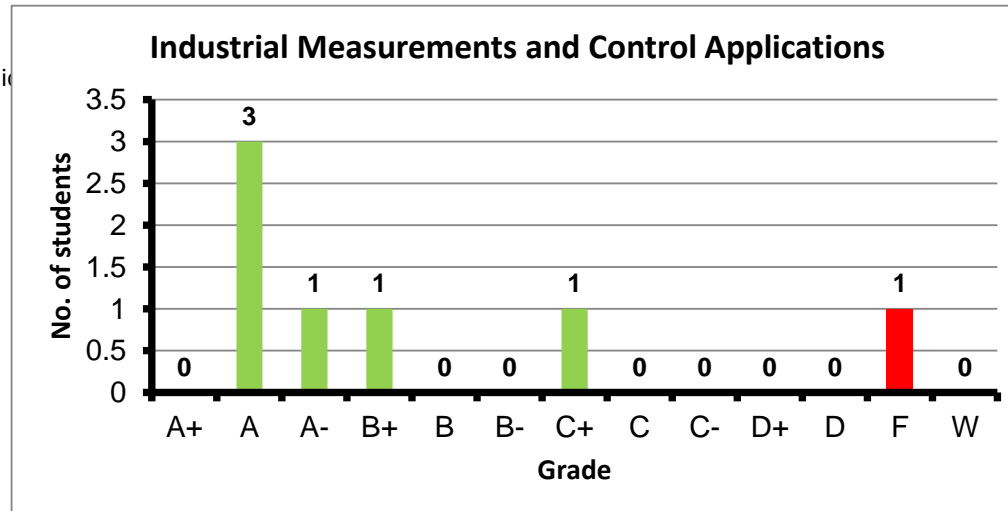
Course: Thermodynamics and Combustion  
 Programs: PPC  
 Code: CHEN105  
 Student: 16  
 A+ to C: 100%  
 C- to D: 0%  
 F: 0  
 W: 0  
 Average: 3.50  
 Std Dev: 0.44



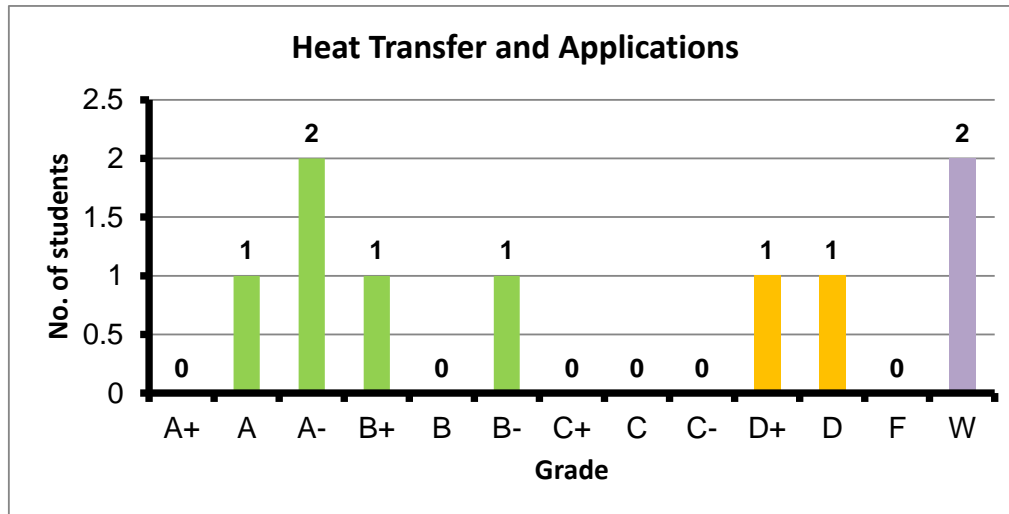
Course: Cryogenic Processes  
 Programs: PPC  
 Code: CHEN204  
 Student: 9  
 A+ to C: 100%  
 C- to D: 0%  
 F: 0  
 W: 0  
 Average: 3.44  
 Std Dev: 0.42



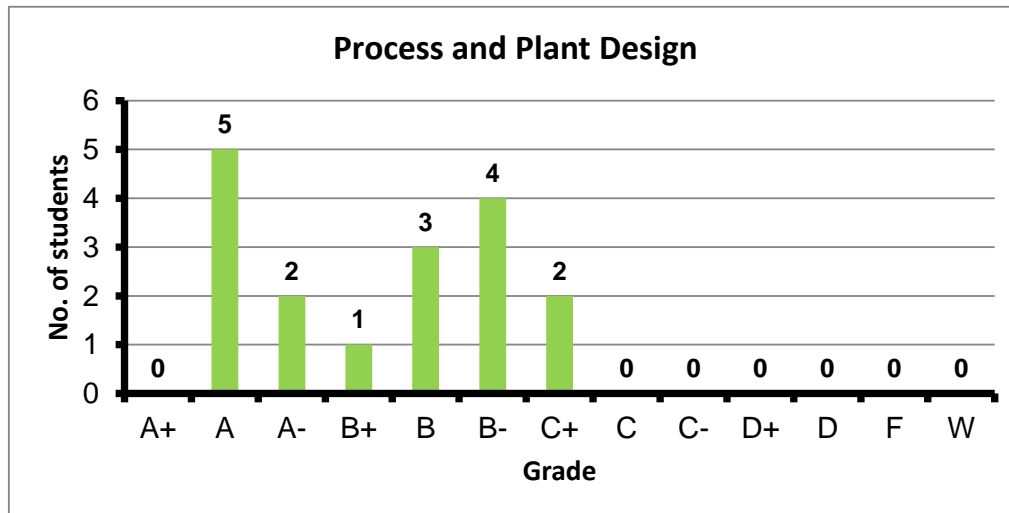
Course: Industrial Measurements and Control Appli  
 Programs: PPC  
 Code: CHEN303  
 Student: 7  
 A+ to C: 86%  
 C- to D: 0%  
 F: 1  
 W: 0  
 Average: 3.04  
 Std Dev: 1.48



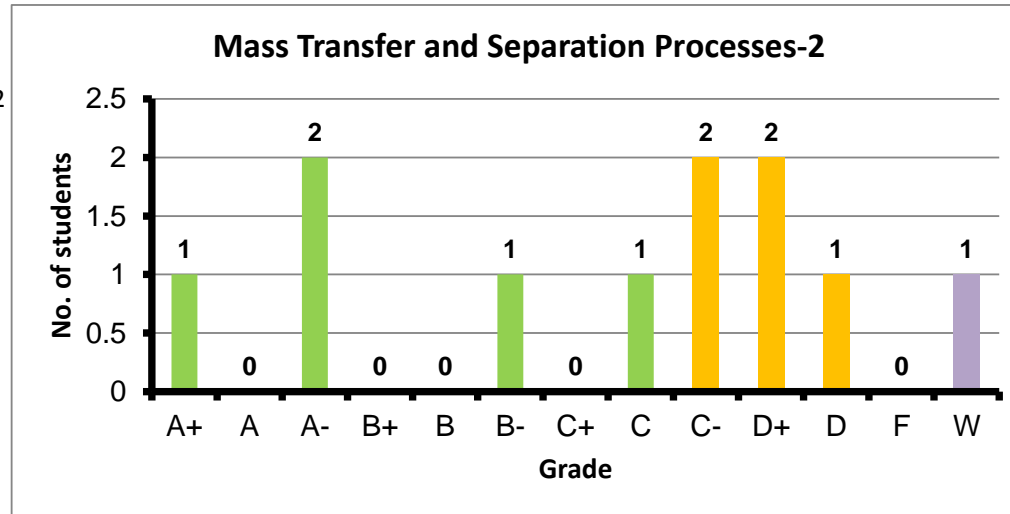
Course: Heat Transfer and Applications  
 Programs: PPC  
 Code: CHEN305  
 Student: 9  
 A+ to C: 71%  
 C- to D: 29%  
 F: 0  
 W: 2  
 Average: 2.83  
 Std Dev: 1.21



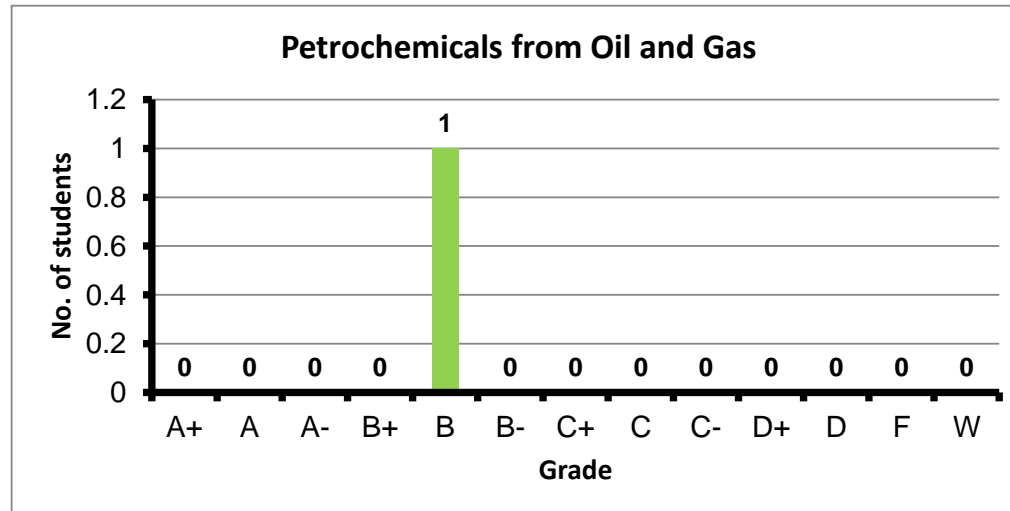
Course: Process and Plant Design  
 Programs: PPC  
 Code: CHEN306  
 Student: 17  
 A+ to C: 100%  
 C- to D: 0%  
 F: 0  
 W: 0  
 Average: 3.24  
 Std Dev: 0.63



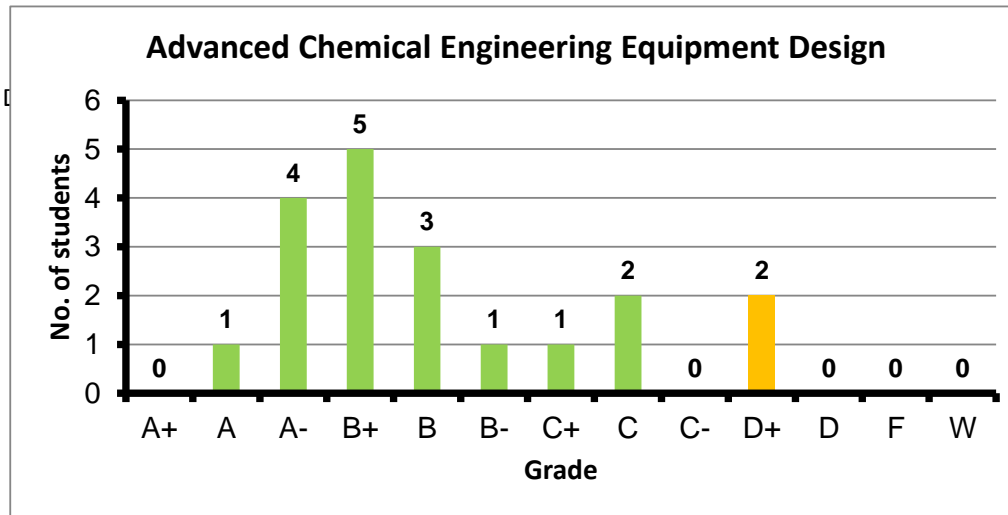
Course: Mass Transfer and Separation Processes-2  
 Programs: PPC  
 Code: CHEN307  
 Student: 11  
 A+ to C: 50%  
 C- to D: 50%  
 F: 0  
 W: 1  
 Average: 2.33  
 Std Dev: 1.13



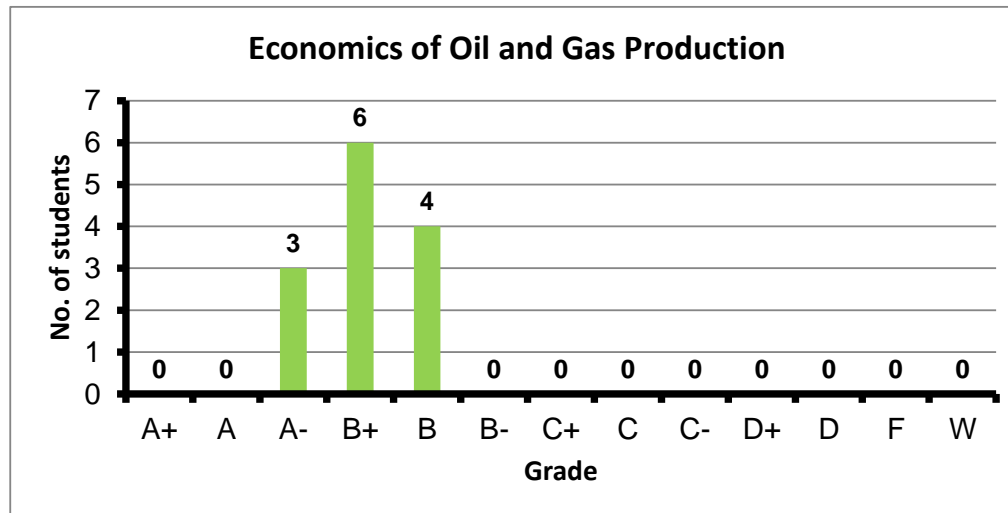
Course: Petrochemicals from Oil and Gas  
 Programs: PPC  
 Code: CHEN402  
 Student: 1  
 A+ to C: 100%  
 C- to D: 0%  
 F: 0  
 W: 0  
 Average: 3.00  
 Std Dev: #DIV/0!



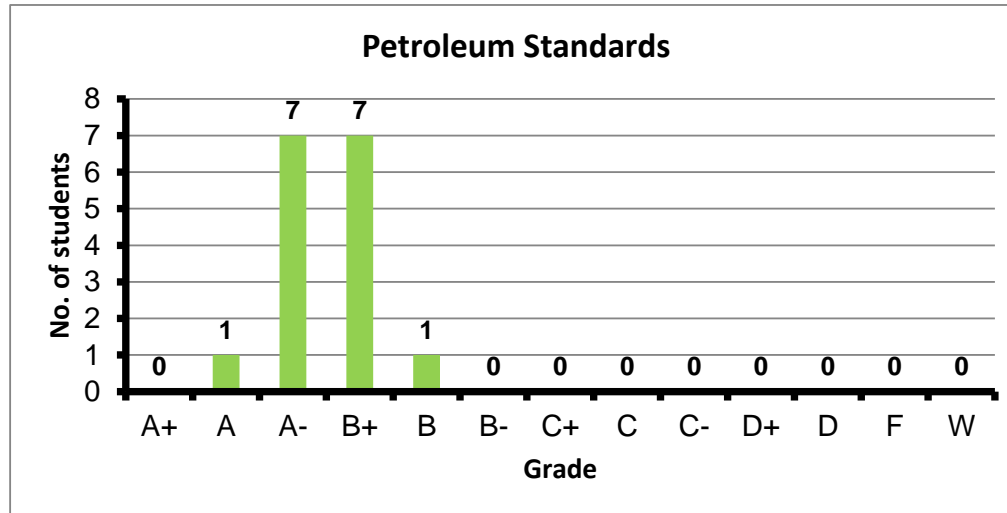
Course: Advanced Chemical Engineering Equipment Design  
 Programs: PPC  
 Code: CHEN407  
 Student: 19  
 A+ to C: 89%  
 C- to D: 11%  
 F: 0  
 W: 0  
 Average: 2.95  
 Std Dev: 0.81



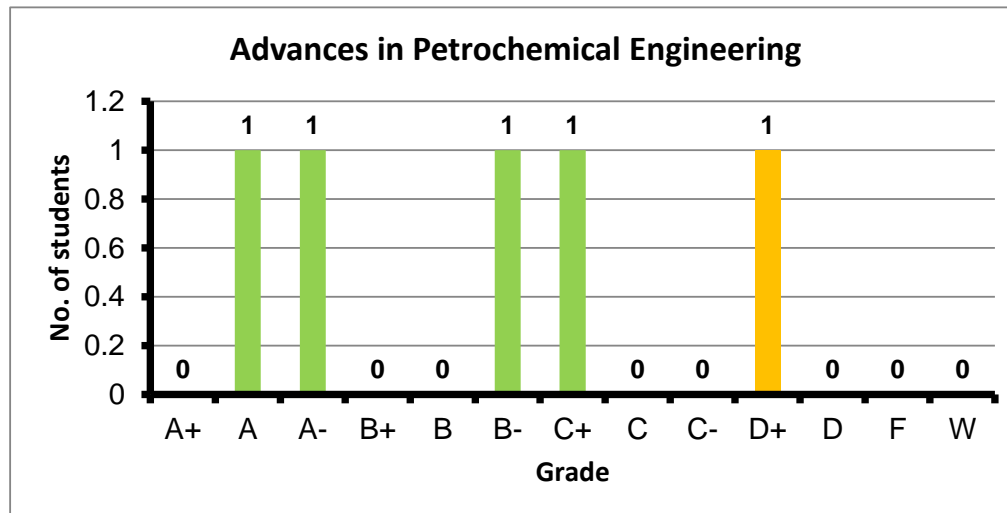
Course: Economics of Oil and Gas Production  
 Programs: PPC  
 Code: CHEN408  
 Student: 13  
 A+ to C: 100%  
 C- to D: 0%  
 F: 0  
 W: 0  
 Average: 3.30  
 Std Dev: 0.26



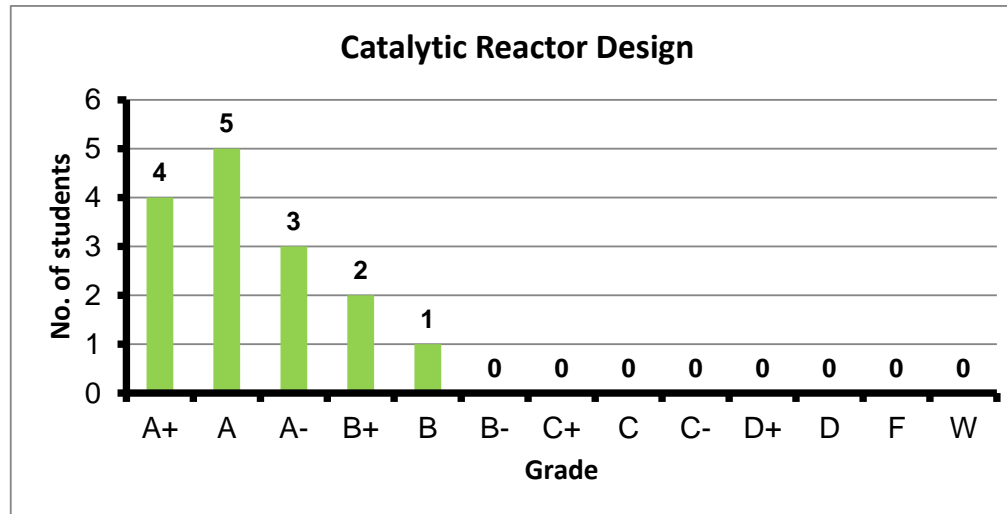
Course: Petroleum Standards  
 Programs: PPC  
 Code: CHEN409  
 Student: 16  
 A+ to C: 100%  
 C- to D: 0%  
 F: 0  
 W: 0  
 Average: 3.50  
 Std Dev: 0.27



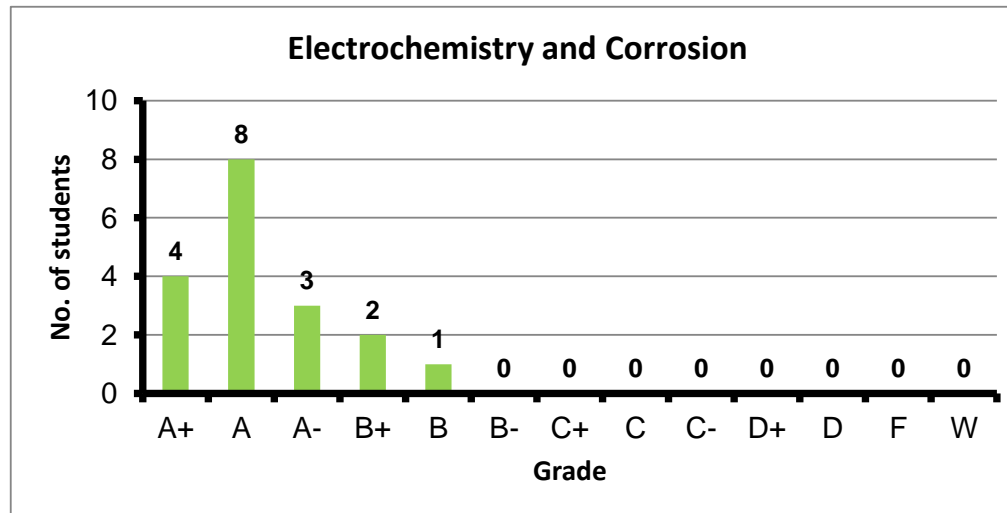
Course: Advances in Petrochemical Engineering  
 Programs: PPC  
 Code: CHEN410  
 Student: 5  
 A+ to C: 80%  
 C- to D: 20%  
 F: 0  
 W: 0  
 Average: 2.82  
 Std Dev: 1.09



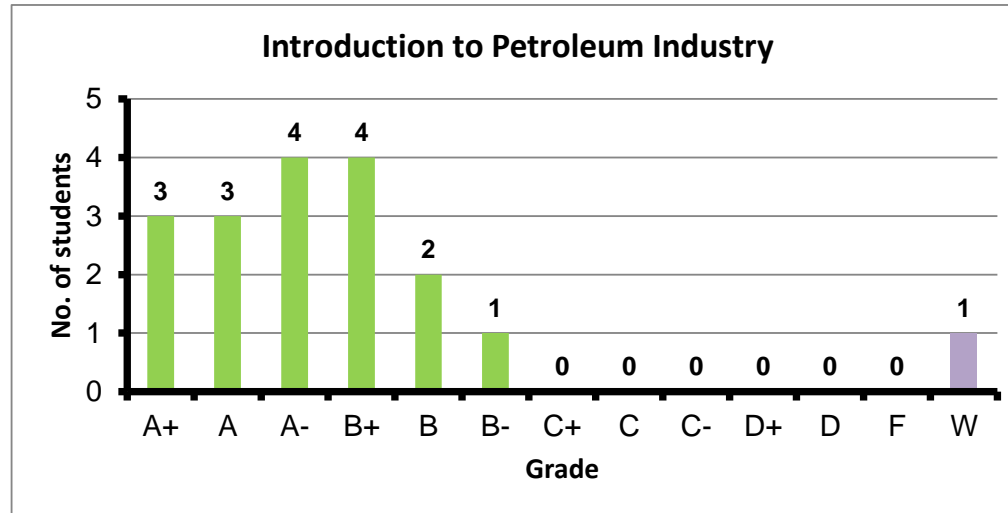
Course: Catalytic Reactor Design  
Programs: PPC  
Code: CHEN411  
Student: 15  
A+ to C: 100%  
C- to D: 0%  
F: 0  
W: 0  
Average: 3.78  
Std Dev: 0.33



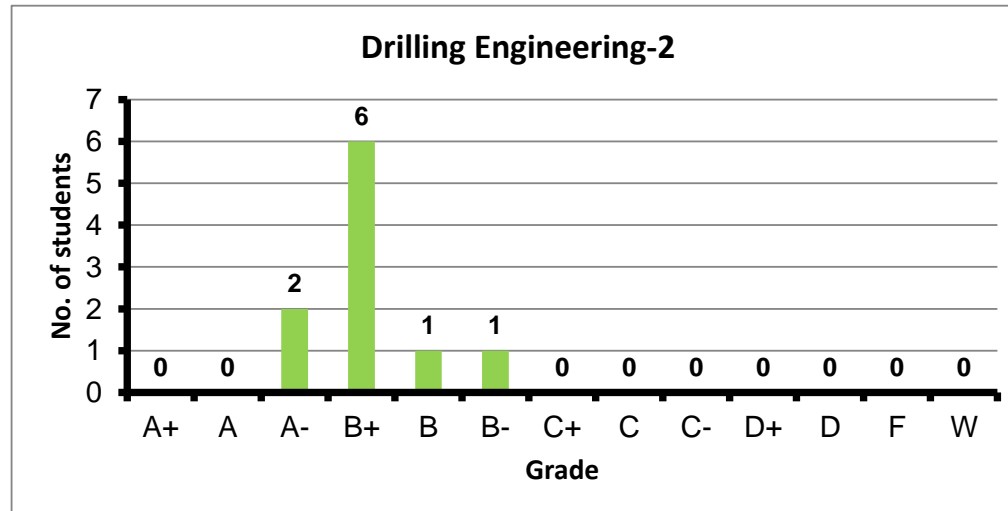
Course: Electrochemistry and Corrosion  
Programs: PPC  
Code: METN401  
Student: 18  
A+ to C: 100%  
C- to D: 0%  
F: 0  
W: 0  
Average: 3.82  
Std Dev: 0.31



Course: Introduction to Petroleum Industry  
 Programs: PPC  
 Code: PEN101  
 Student: 18  
 A+ to C: 100%  
 C- to D: 0%  
 F: 0  
 W: 1  
 Average: 3.57  
 Std Dev: 0.42

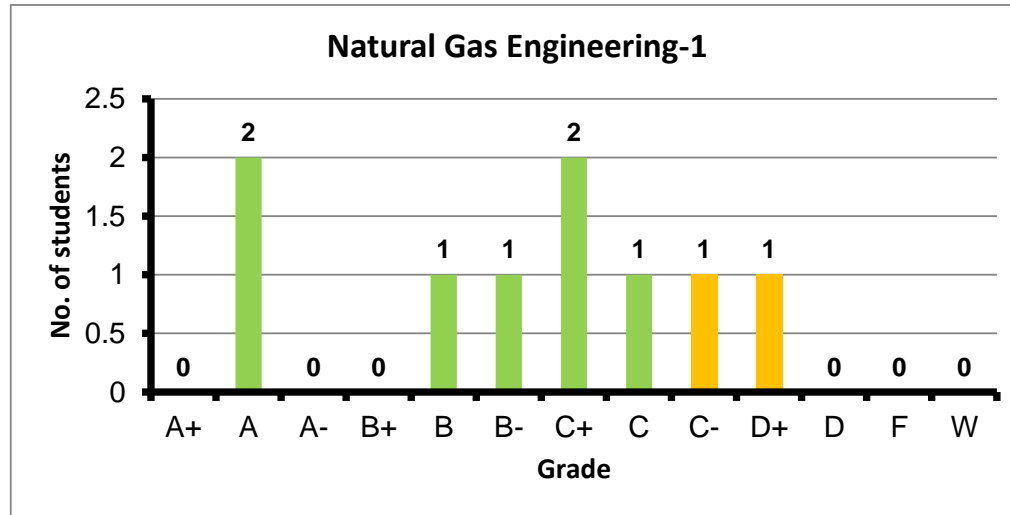


Course: Drilling Engineering-2  
 Programs: PPC  
 Code: PEN203  
 Student: 10  
 A+ to C: 100%  
 C- to D: 0%  
 F: 0  
 W: 0  
 Average: 3.29  
 Std Dev: 0.29

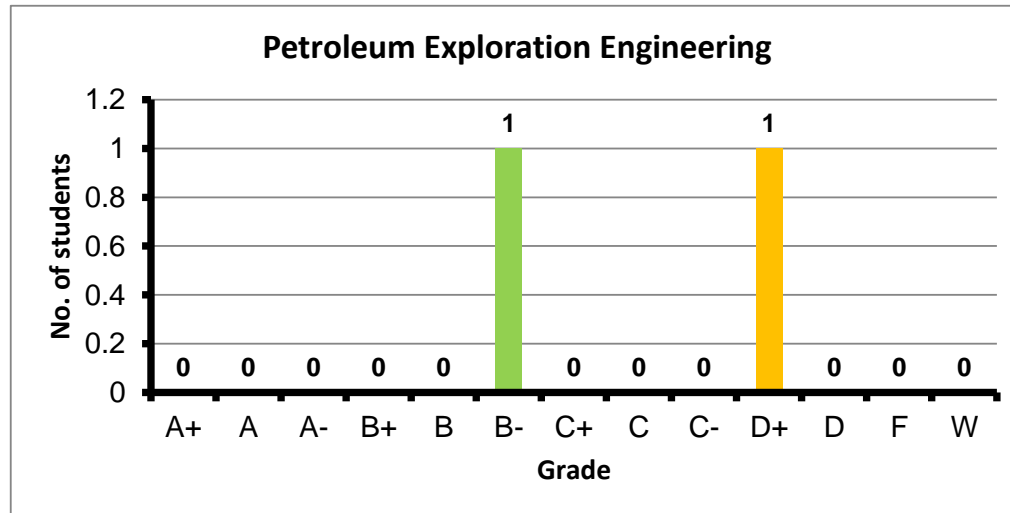




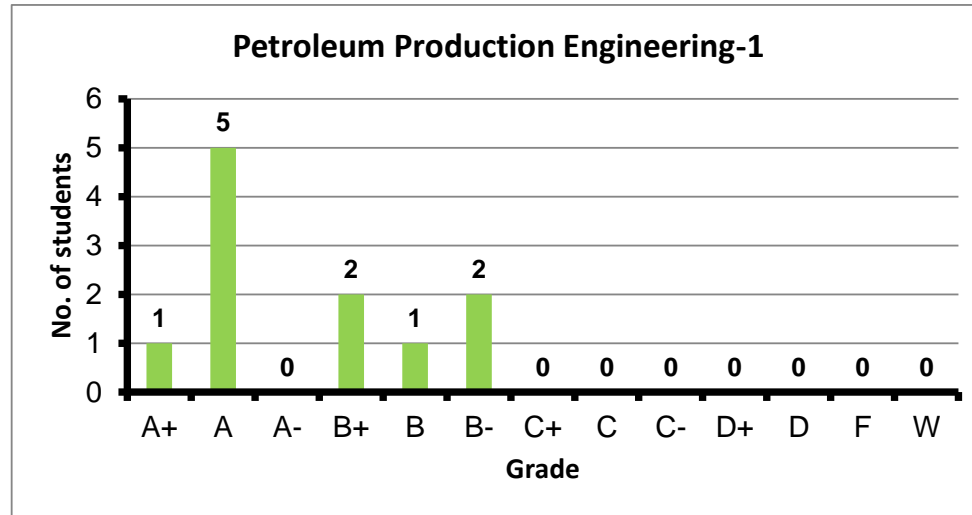
Course: Natural Gas Engineering-1  
 Programs: PPC  
 Code: PEN204  
 Student: 9  
 A+ to C: 78%  
 C- to D: 22%  
 F: 0  
 W: 0  
 Average: 2.60  
 Std Dev: 0.94



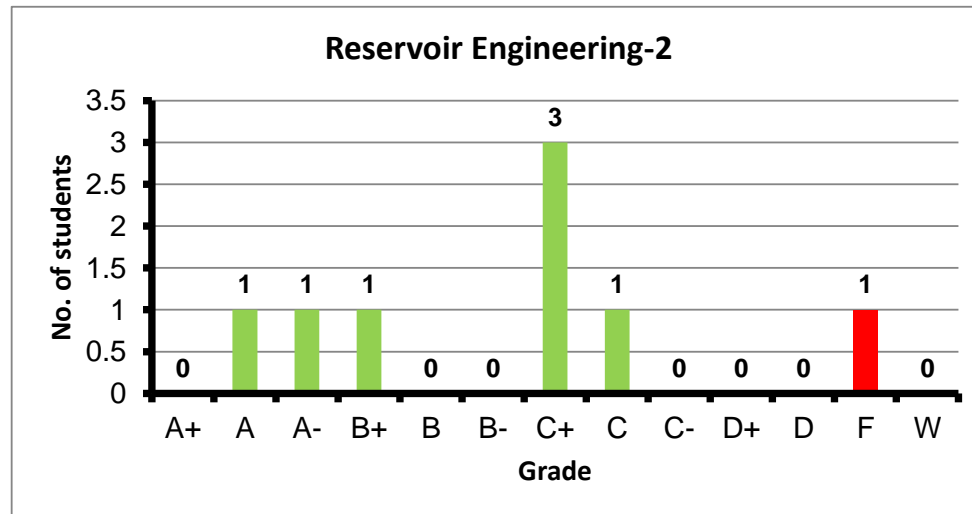
Course: Petroleum Exploration Engineering  
 Programs: PPC  
 Code: PEN301  
 Student: 2  
 A+ to C: 50%  
 C- to D: 50%  
 F: 0  
 W: 0  
 Average: 2.05  
 Std Dev: 0.99



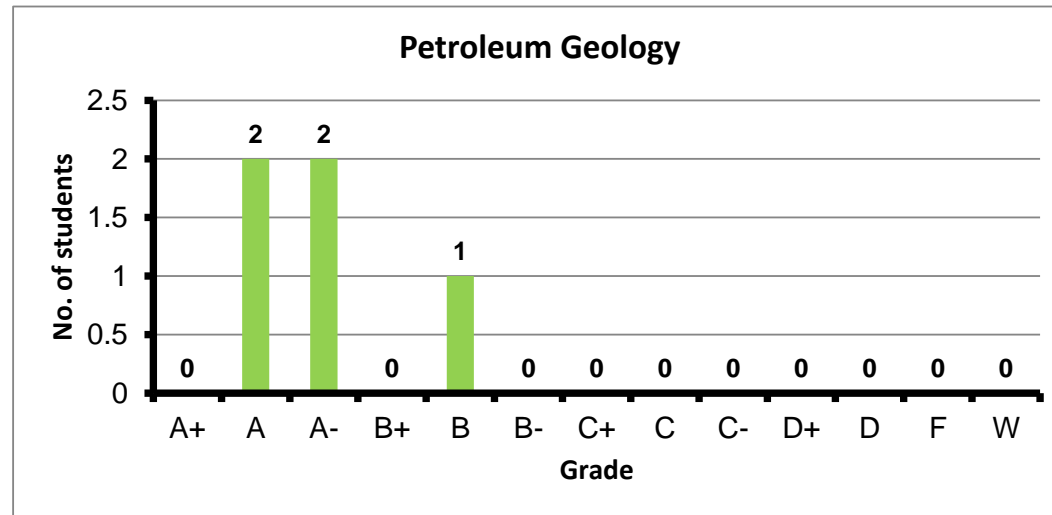
Course: Petroleum Production Engineering-1  
 Programs: PPC  
 Code: PEN303  
 Student: 11  
 A+ to C: 100%  
 C- to D: 0%  
 F: 0  
 W: 0  
 Average: 3.55  
 Std Dev: 0.56



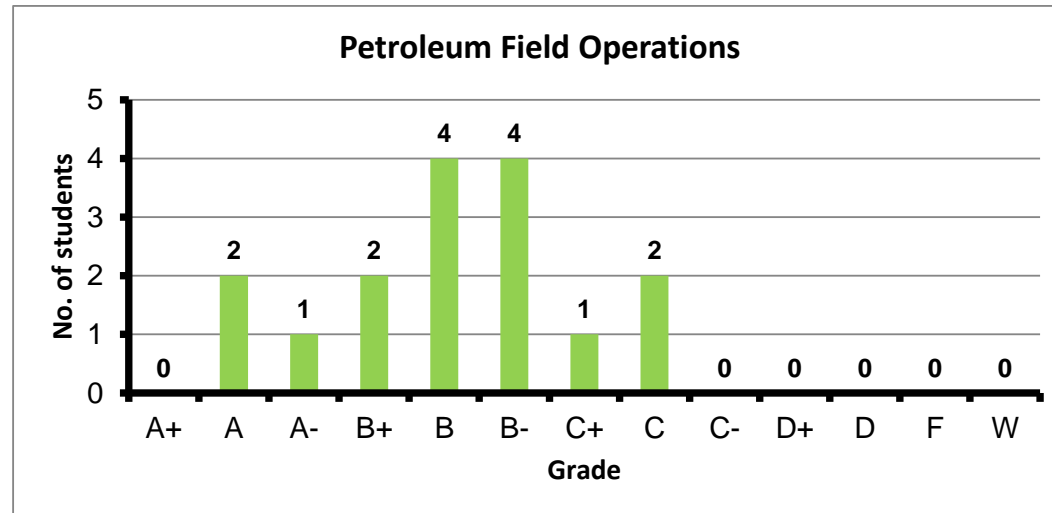
Course: Reservoir Engineering-2  
 Programs: PPC  
 Code: PEN304  
 Student: 8  
 A+ to C: 88%  
 C- to D: 0%  
 F: 1  
 W: 0  
 Average: 2.49  
 Std Dev: 1.25



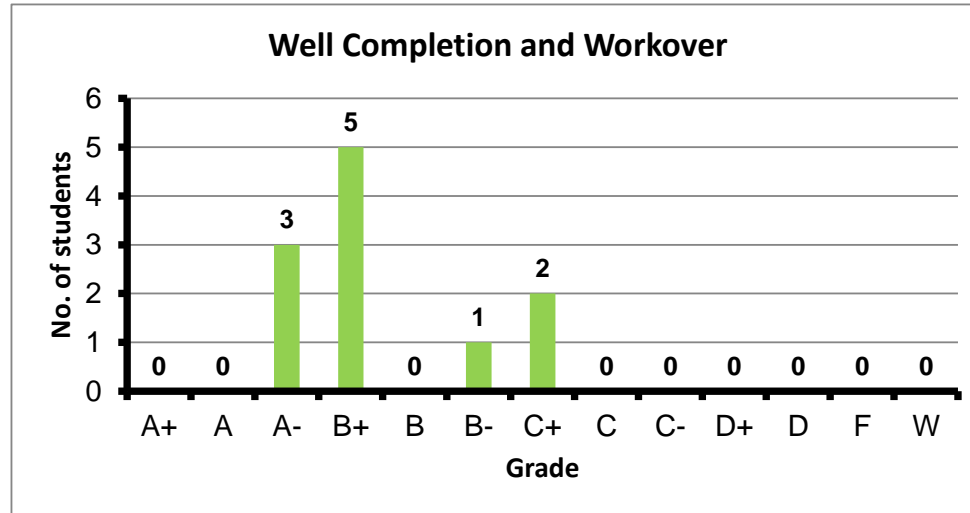
Course: Petroleum Geology  
 Programs: PPC  
 Code: PEN305  
 Student: 5  
 A+ to C: 100%  
 C- to D: 0%  
 F: 0  
 W: 0  
 Average: 3.68  
 Std Dev: 0.41



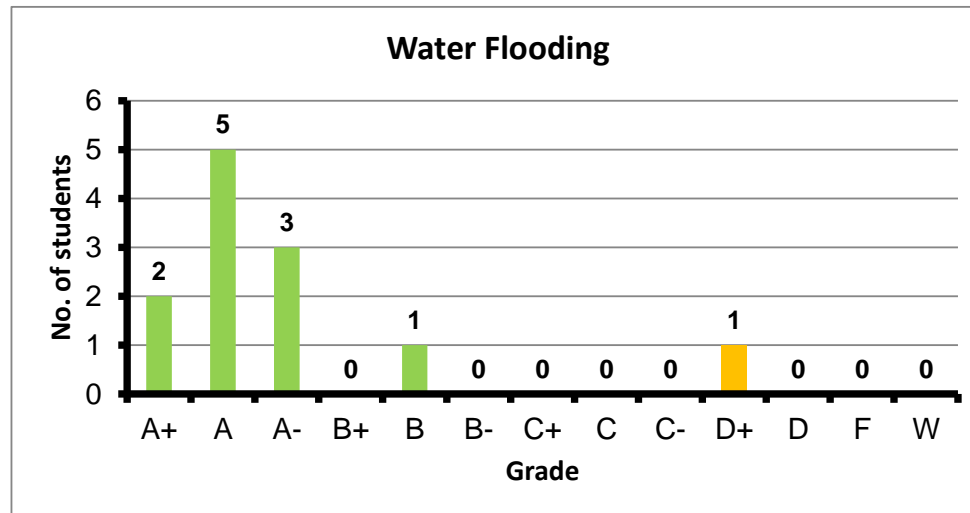
Course: Petroleum Field Operations  
 Programs: PPC  
 Code: PEN306  
 Student: 16  
 A+ to C: 100%  
 C- to D: 0%  
 F: 0  
 W: 0  
 Average: 2.96  
 Std Dev: 0.61



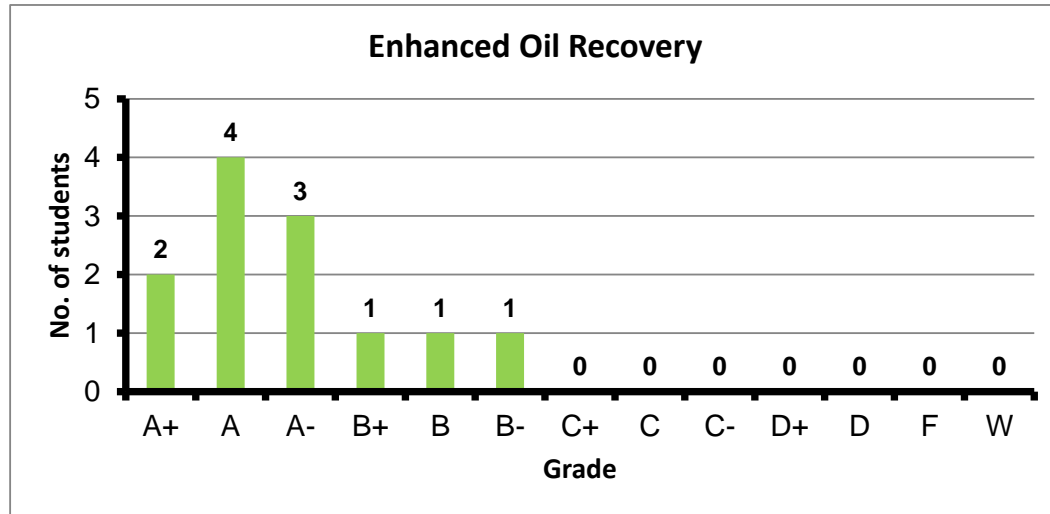
Course: Well Completion and Workover  
 Programs: PPC  
 Code: PEN401  
 Student: 11  
 A+ to C: 100%  
 C- to D: 0%  
 F: 0  
 W: 0  
 Average: 3.17  
 Std Dev: 0.52



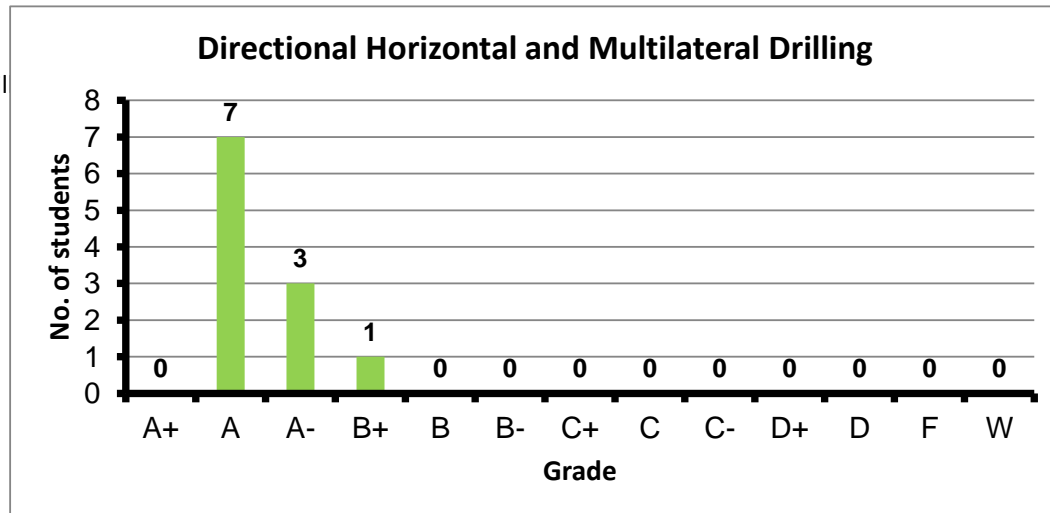
Course: Water Flooding  
 Programs: PPC  
 Code: PEN411  
 Student: 12  
 A+ to C: 92%  
 C- to D: 8%  
 F: 0  
 W: 0  
 Average: 3.63  
 Std Dev: 0.79



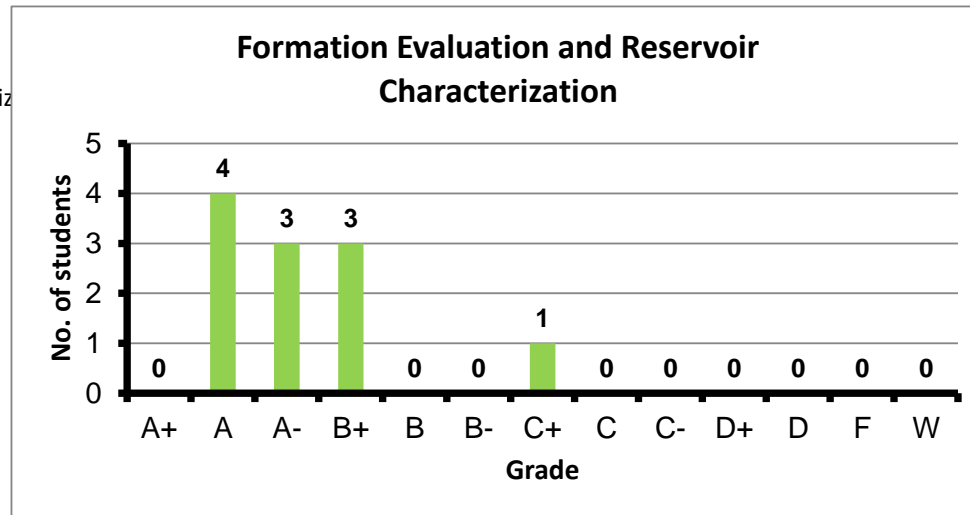
Course: Enhanced Oil Recovery  
 Programs: PPC  
 Code: PEN413  
 Student: 12  
 A+ to C: 100%  
 C- to D: 0%  
 F: 0  
 W: 0  
 Average: 3.68  
 Std Dev: 0.45



Course: Directional Horizontal and Multilateral Drilling  
 Programs: PPC  
 Code: PEN414  
 Student: 11  
 A+ to C: 100%  
 C- to D: 0%  
 F: 0  
 W: 0  
 Average: 3.85  
 Std Dev: 0.23



Course: Formation Evaluation and Reservoir Characterization  
 Programs: PPC  
 Code: PEN419  
 Student: 11  
 A+ to C: 100%  
 C- to D: 0%  
 F: 0  
 W: 0  
 Average: 3.57  
 Std Dev: 0.51



Course: Graduation Project-2  
 Programs: PPC  
 Code: PPCN481  
 Student: 32  
 A+ to C: 100%  
 C- to D: 0%  
 F: 0  
 W: 0  
 Average: 3.56  
 Std Dev: 0.37

