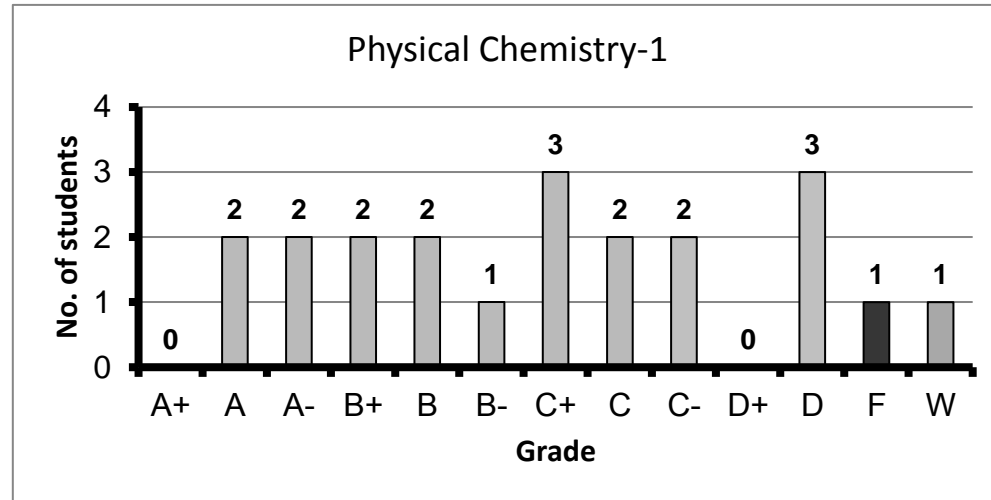
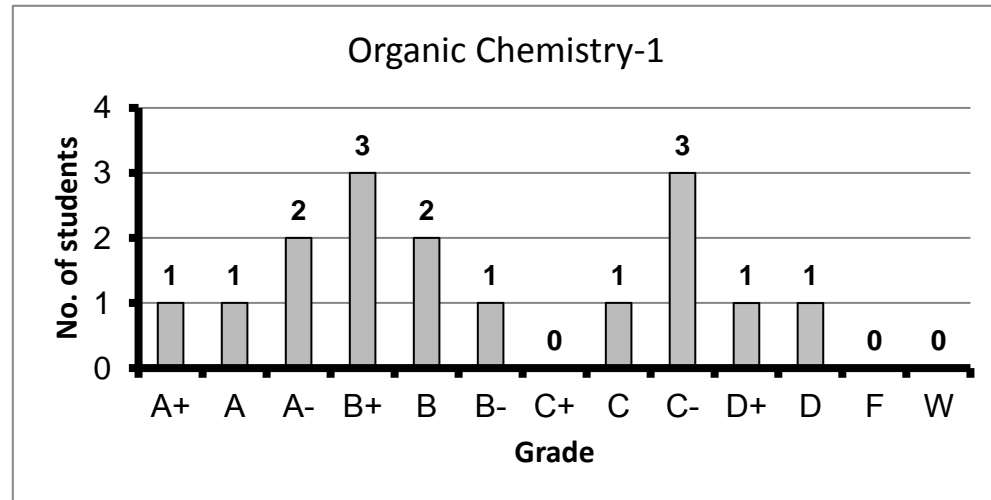


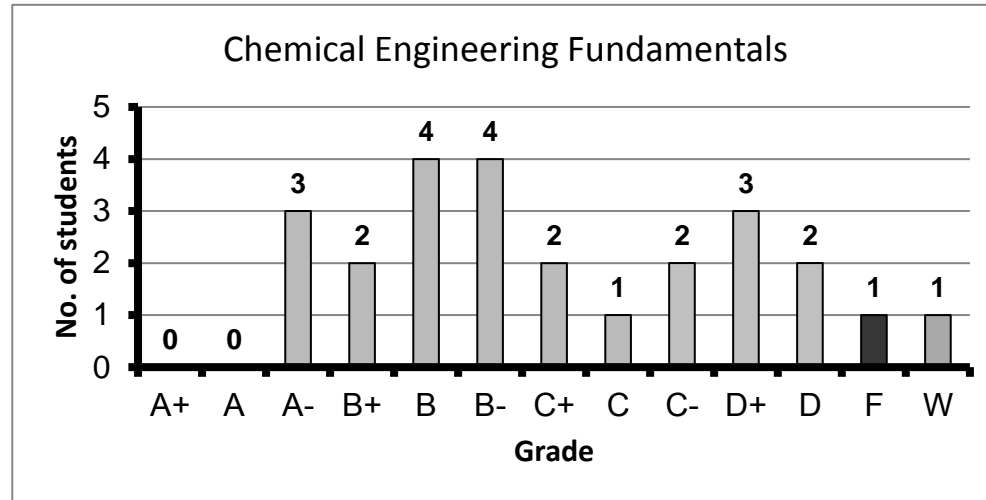
Course: Physical Chemistry-1
Programs: PPC
Code: CHEN101
Student: 21
A+ to C: 70%
C- to D: 25%
F: 1
W: 1
Average: 2.40
Std Dev: 1.12



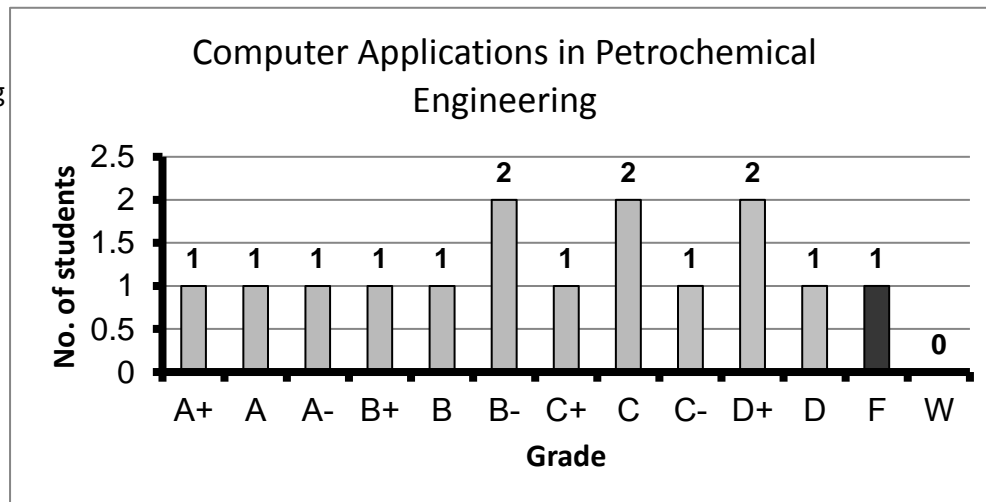
Course: Organic Chemistry-1
Programs: PPC
Code: CHEN102
Student: 16
A+ to C: 69%
C- to D: 31%
F: 0
W: 0
Average: 2.72
Std Dev: 1.00



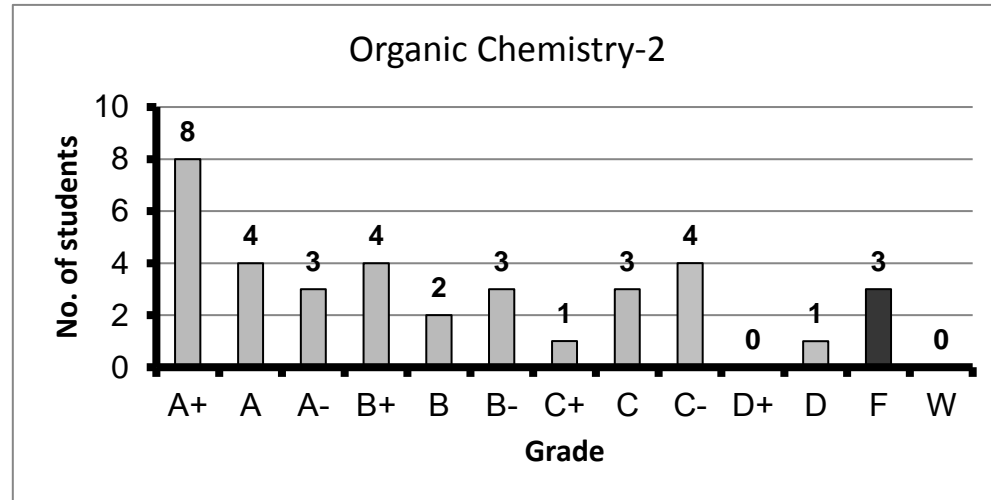
Course: Chemical Engineering Fundamentals
 Programs: PPC
 Code: CHEN103
 Student: 25
 A+ to C: 67%
 C- to D: 29%
 F: 1
 W: 1
 Average: 2.36
 Std Dev: 1.00



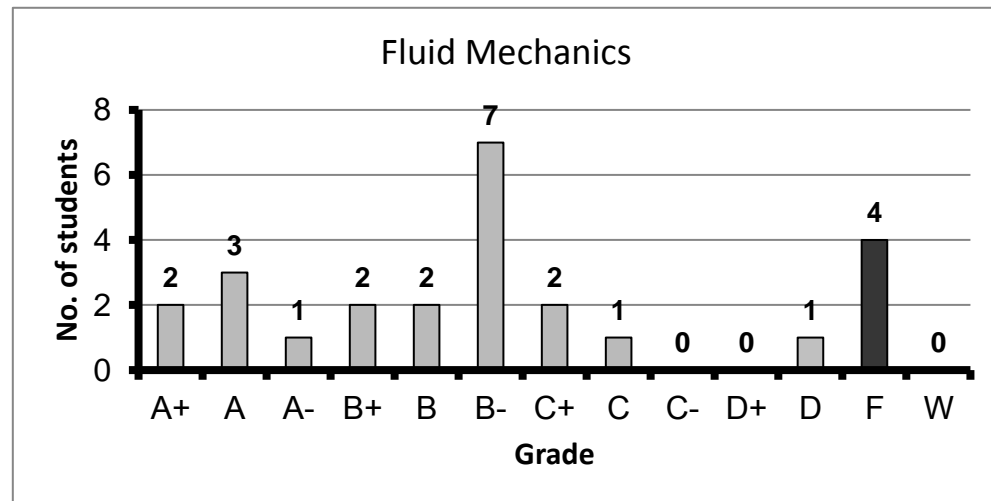
Course: Computer Applications in Petrochemical Engineering
 Programs: PPC
 Code: CHEN106
 Student: 15
 A+ to C: 67%
 C- to D: 27%
 F: 1
 W: 0
 Average: 2.35
 Std Dev: 1.17



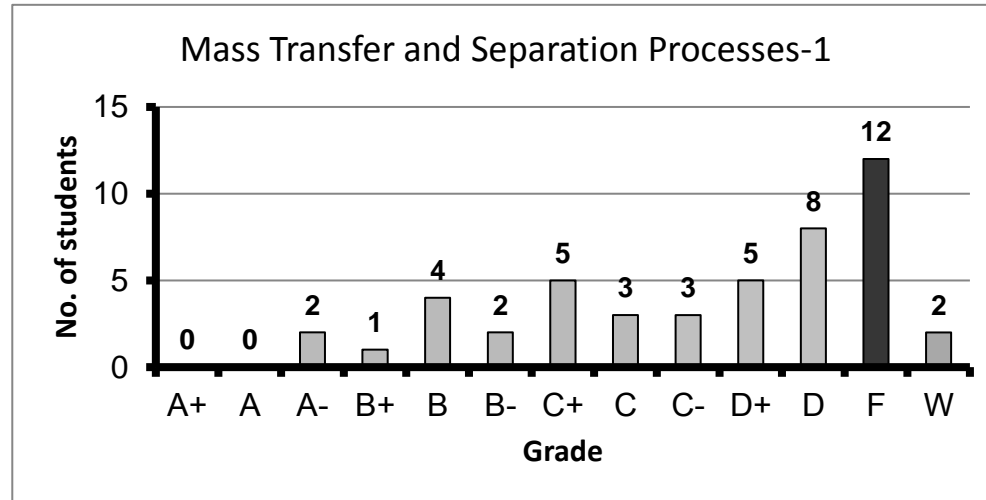
Course: Organic Chemistry-2
 Programs: PPC
 Code: CHEN201
 Student: 36
 A+ to C: 78%
 C- to D: 14%
 F: 3
 W: 0
 Average: 2.85
 Std Dev: 1.25



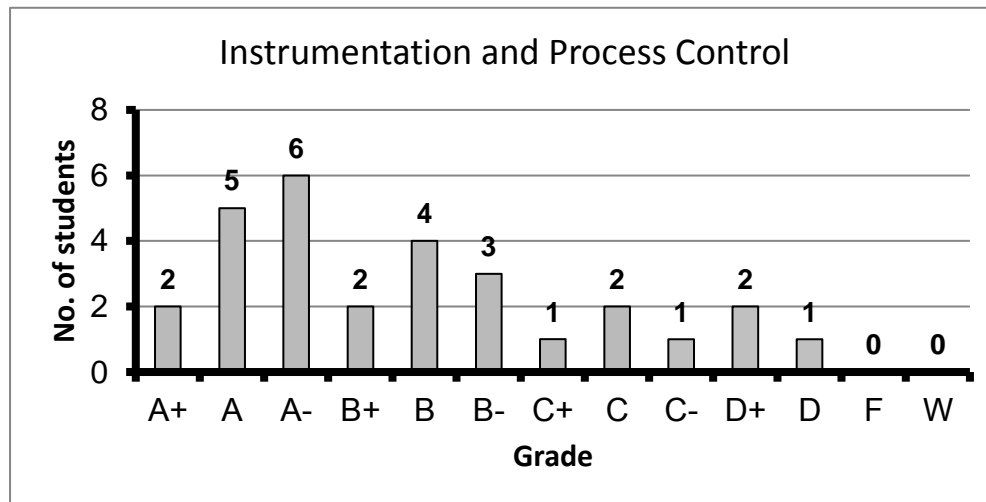
Course: Fluid Mechanics
 Programs: PPC
 Code: CHEN202
 Student: 25
 A+ to C: 80%
 C- to D: 4%
 F: 4
 W: 0
 Average: 2.51
 Std Dev: 1.33



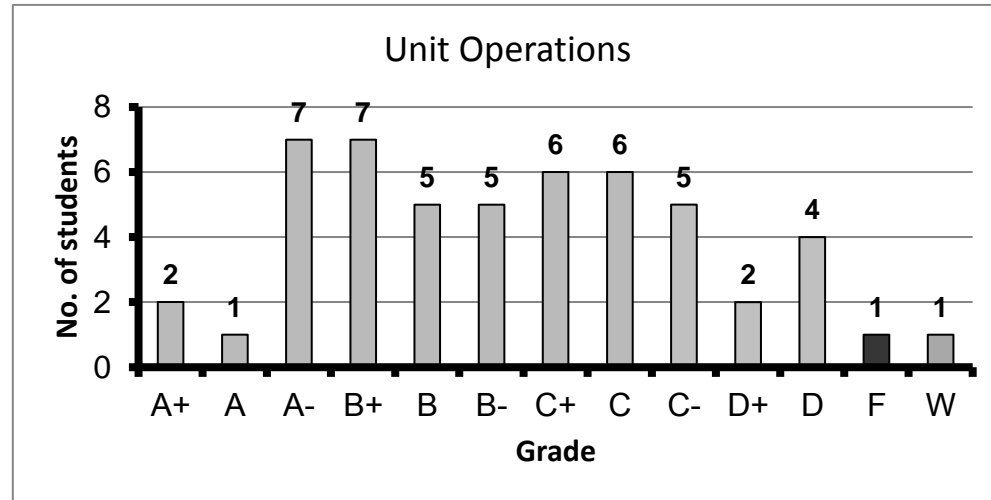
Course: Mass Transfer and Separation Processes-1
 Programs: PPC
 Code: CHEN301
 Student: 47
 A+ to C: 38%
 C- to D: 36%
 F: 12
 W: 2
 Average: 1.46
 Std Dev: 1.15



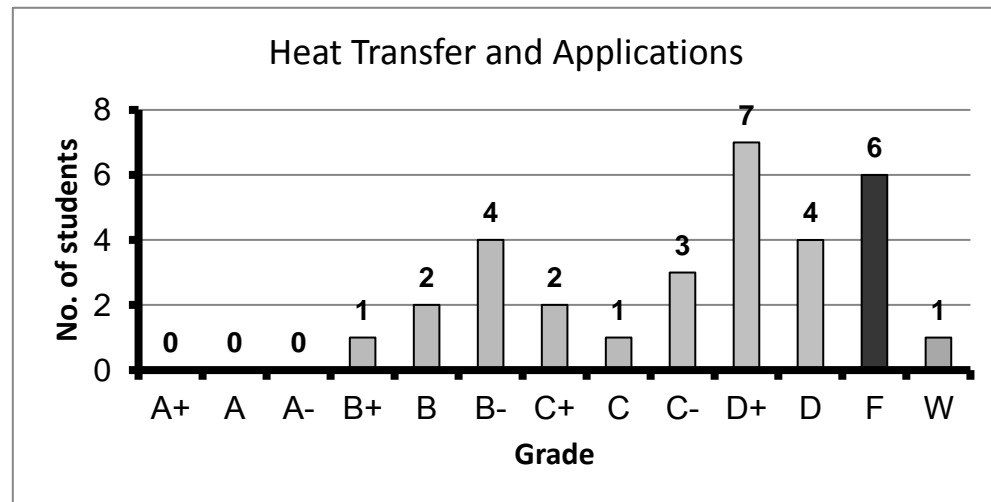
Course: Instrumentation and Process Control
 Programs: PPC
 Code: CHEN302
 Student: 29
 A+ to C: 86%
 C- to D: 14%
 F: 0
 W: 0
 Average: 3.06
 Std Dev: 0.93



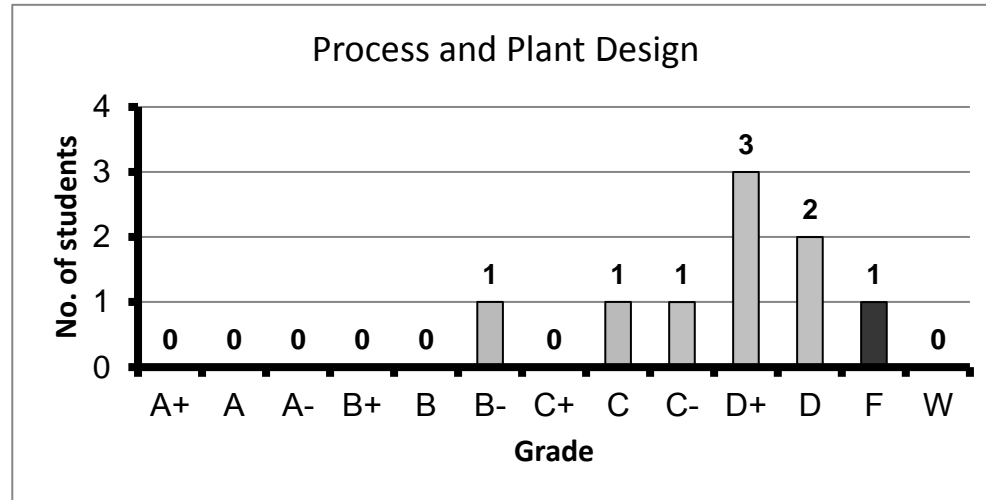
Course: Unit Operations
 Programs: PPC
 Code: CHEN304
 Student: 52
 A+ to C: 76%
 C- to D: 22%
 F: 1
 W: 1
 Average: 2.56
 Std Dev: 0.96



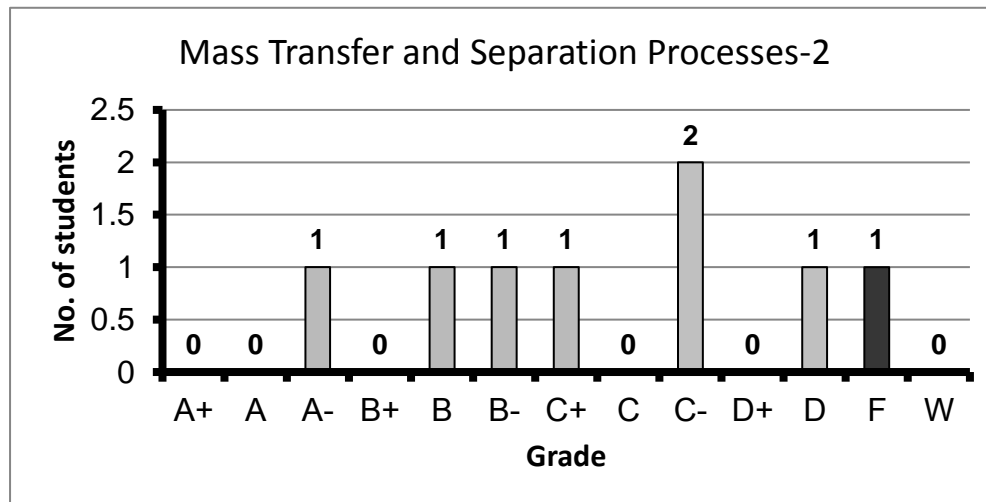
Course: Heat Transfer and Applications
 Programs: PPC
 Code: CHEN305
 Student: 31
 A+ to C: 33%
 C- to D: 47%
 F: 6
 W: 1
 Average: 1.52
 Std Dev: 1.02



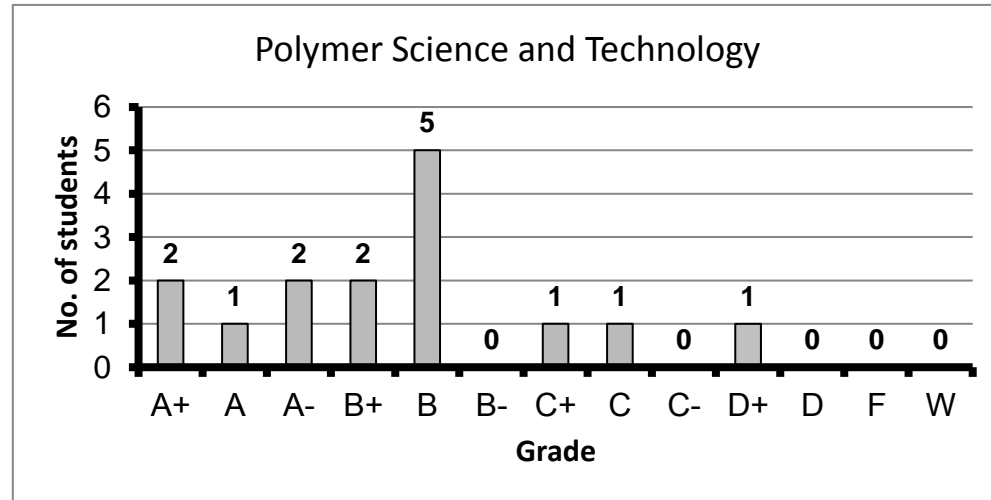
Course: Process and Plant Design
 Programs: PPC
 Code: CHEN306
 Student: 9
 A+ to C: 22%
 C- to D: 67%
 F: 1
 W: 0
 Average: 1.40
 Std Dev: 0.75



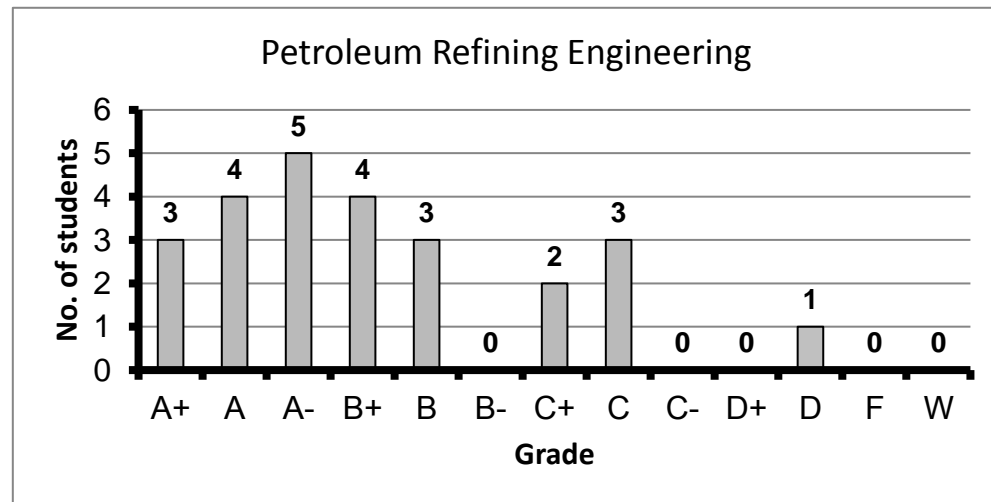
Course: Mass Transfer and Separation Processes-2
 Programs: PPC
 Code: CHEN307
 Student: 8
 A+ to C: 50%
 C- to D: 38%
 F: 1
 W: 0
 Average: 2.01
 Std Dev: 1.17



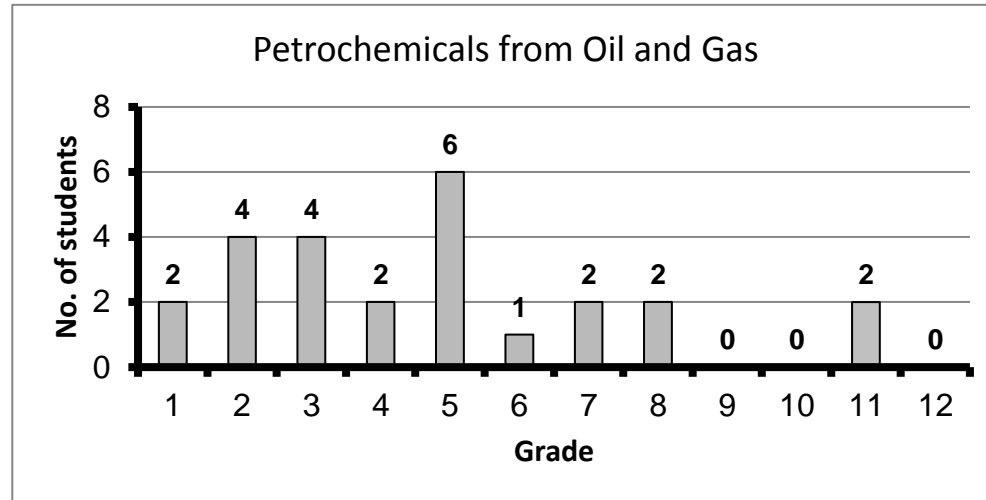
Course: Polymer Science and Technology
Programs: PPC
Code: CHEN308
Student: 15
A+ to C: 93%
C- to D: 7%
F: 0
W: 0
Average: 3.11
Std Dev: 0.77



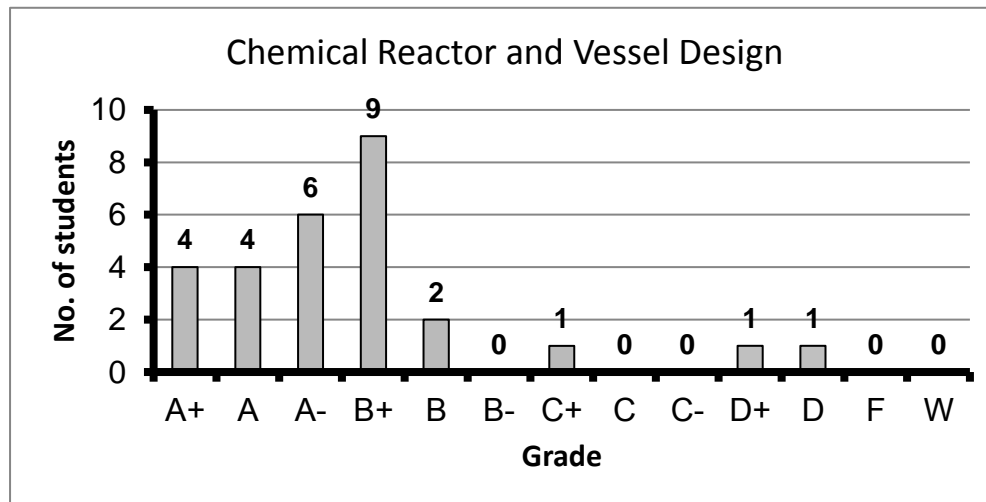
Course: Petroleum Refining Engineering
Programs: PPC
Code: CHEN401
Student: 25
A+ to C: 96%
C- to D: 4%
F: 0
W: 0
Average: 3.21
Std Dev: 0.83



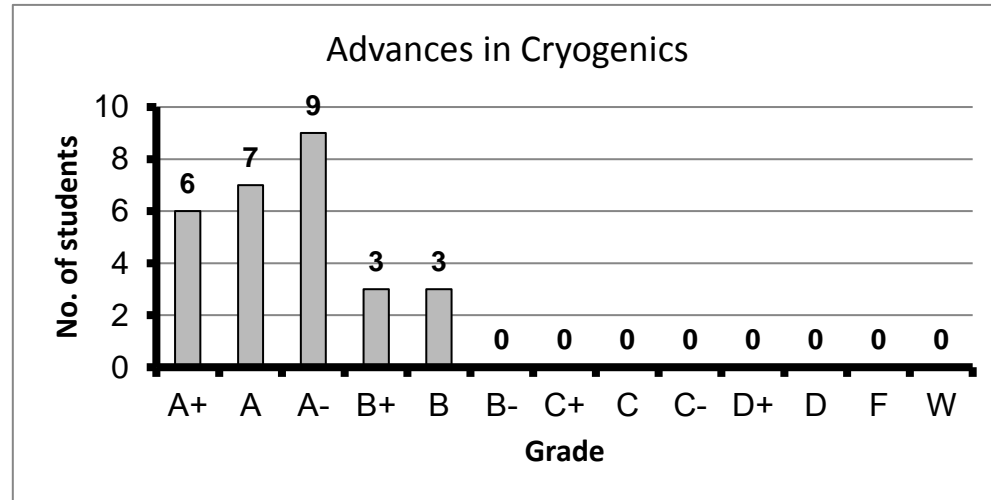
Course: Petrochemicals from Oil and Gas
 Programs: PPC
 Code: CHEN402
 Student: 27
 A+ to C: 85%
 C- to D: 7%
 F: 2
 W: 0
 Average: 2.81
 Std Dev: 1.07



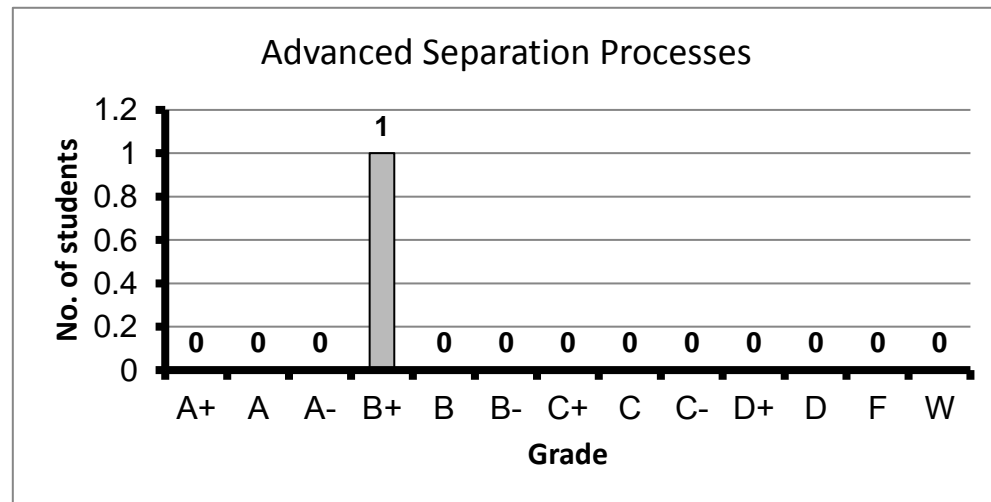
Course: Chemical Reactor and Vessel Design
 Programs: PPC
 Code: CHEN403
 Student: 28
 A+ to C: 93%
 C- to D: 7%
 F: 0
 W: 0
 Average: 3.38
 Std Dev: 0.75



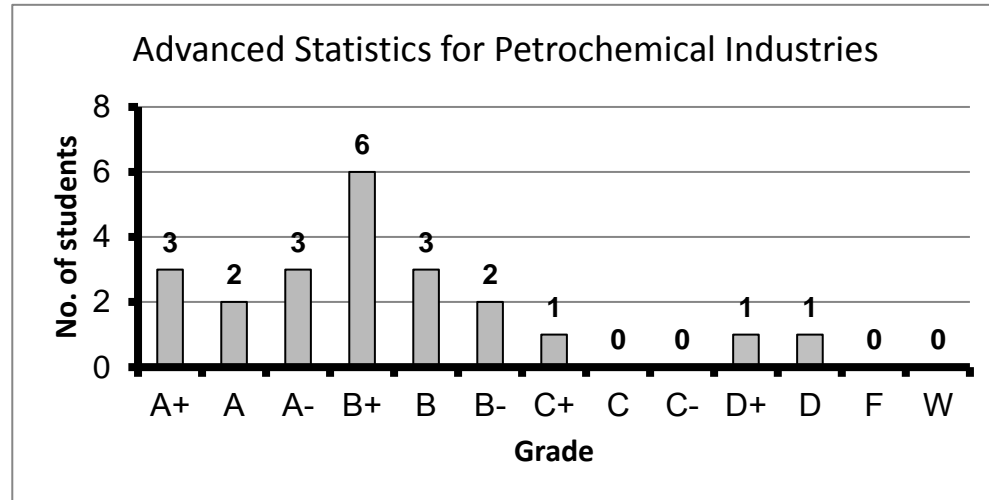
Course: Advances in Cryogenics
 Programs: PPC
 Code: CHEN404
 Student: 28
 A+ to C: 100%
 C- to D: 0%
 F: 0
 W: 0
 Average: 3.72
 Std Dev: 0.34



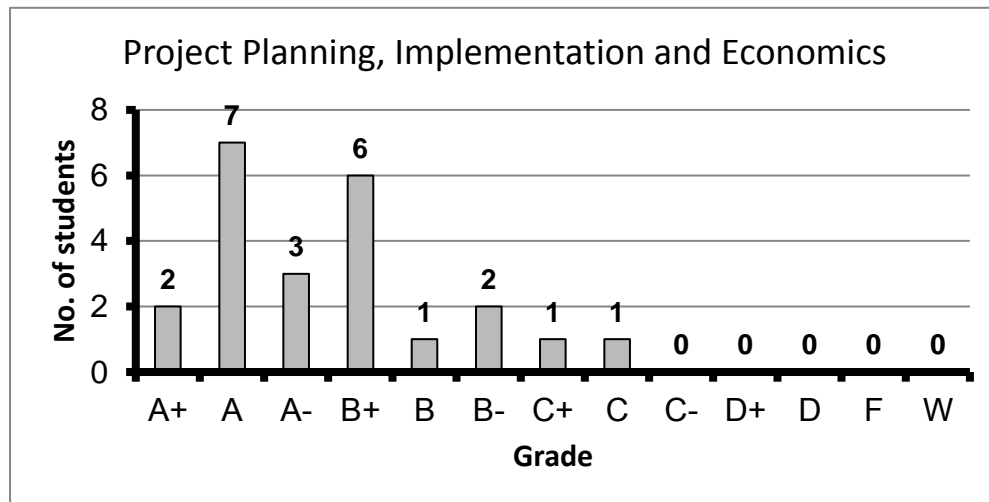
Course: Advanced Separation Processes
 Programs: PPC
 Code: CHEN405
 Student: 1
 A+ to C: 100%
 C- to D: 0%
 F: 0
 W: 0
 Average: 3.30
 Std Dev: #DIV/0!



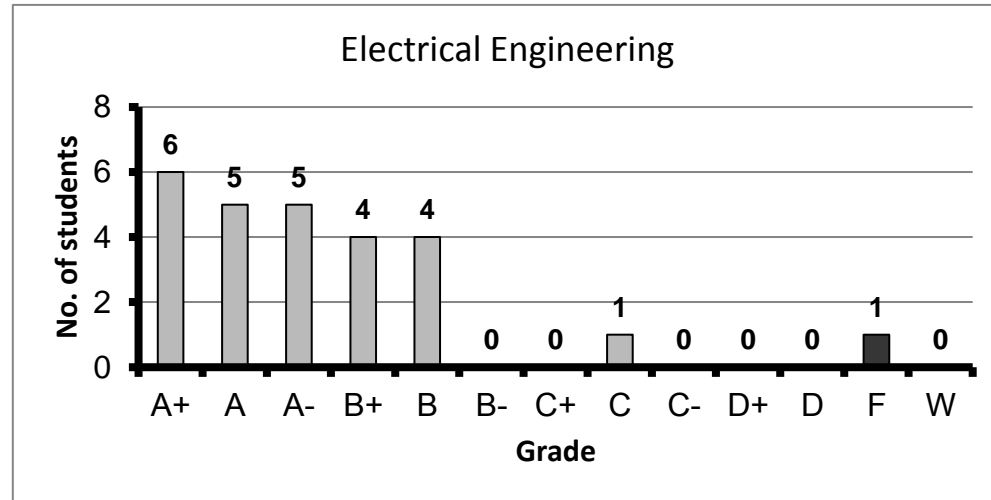
Course: Advanced Statistics for Petrochemical Industries
 Programs: PPC
 Code: CHEN406
 Student: 22
 A+ to C: 91%
 C- to D: 9%
 F: 0
 W: 0
 Average: 3.18
 Std Dev: 0.81



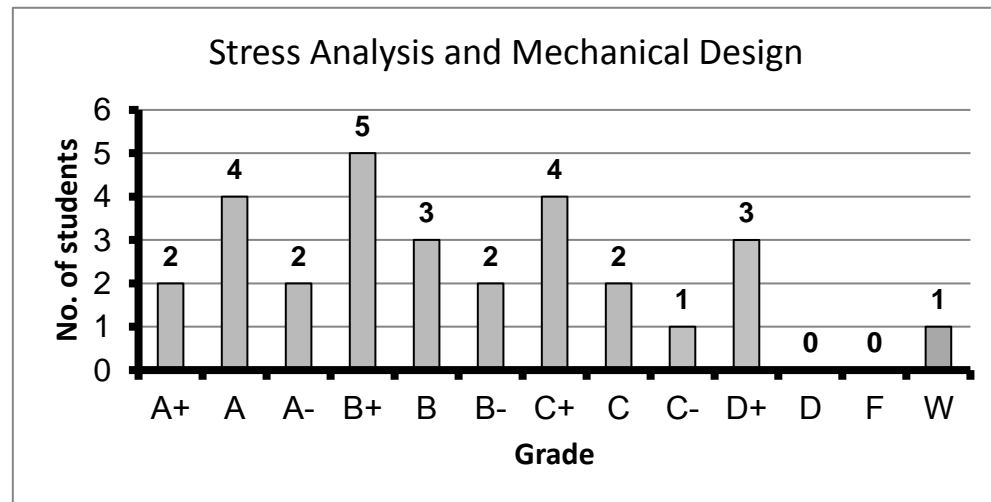
Course: Project Planning, Implementation and Economics
 Programs: PPC
 Code: GENN401
 Student: 23
 A+ to C: 100%
 C- to D: 0%
 F: 0
 W: 0
 Average: 3.46
 Std Dev: 0.60



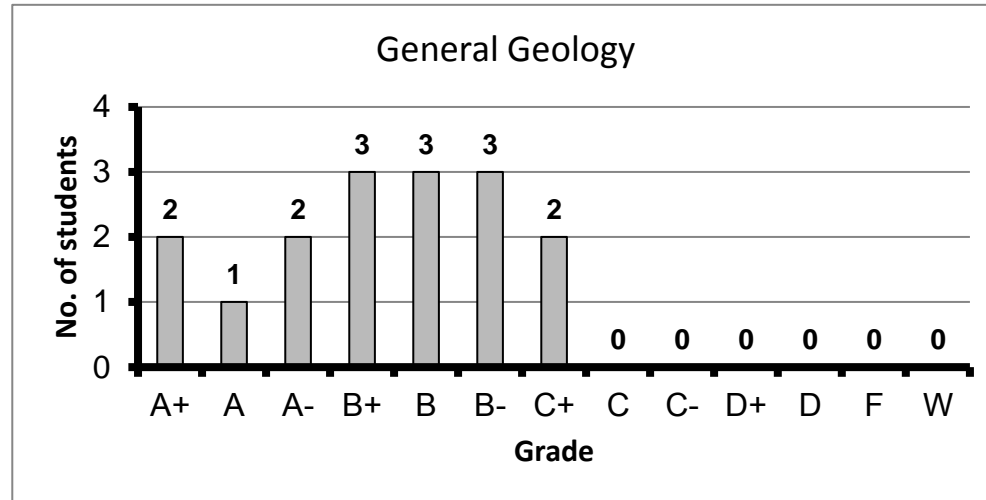
Course: Electrical Engineering
 Programs: PPC
 Code: INTN201
 Student: 26
 A+ to C: 96%
 C- to D: 0%
 F: 1
 W: 0
 Average: 3.45
 Std Dev: 0.86



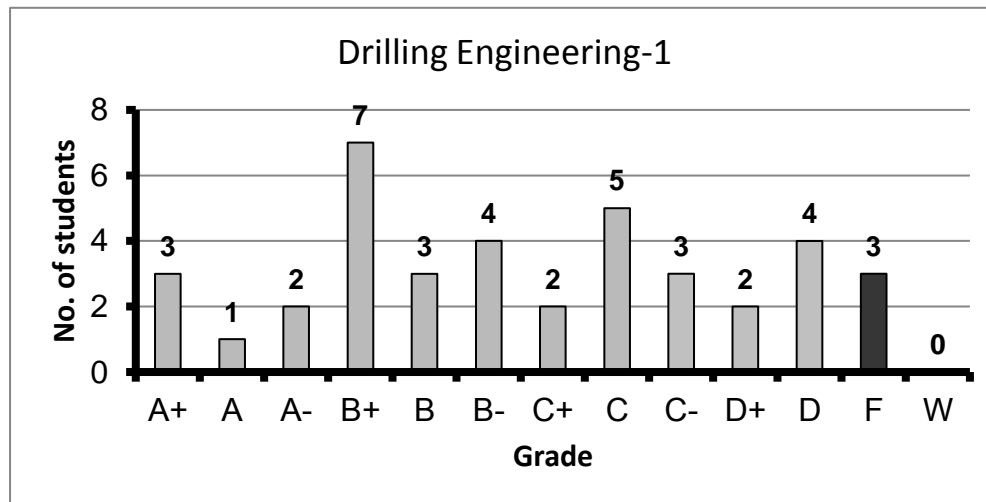
Course: Stress Analysis and Mechanical Design
 Programs: PPC
 Code: MDPN201
 Student: 29
 A+ to C: 86%
 C- to D: 14%
 F: 0
 W: 1
 Average: 2.91
 Std Dev: 0.90



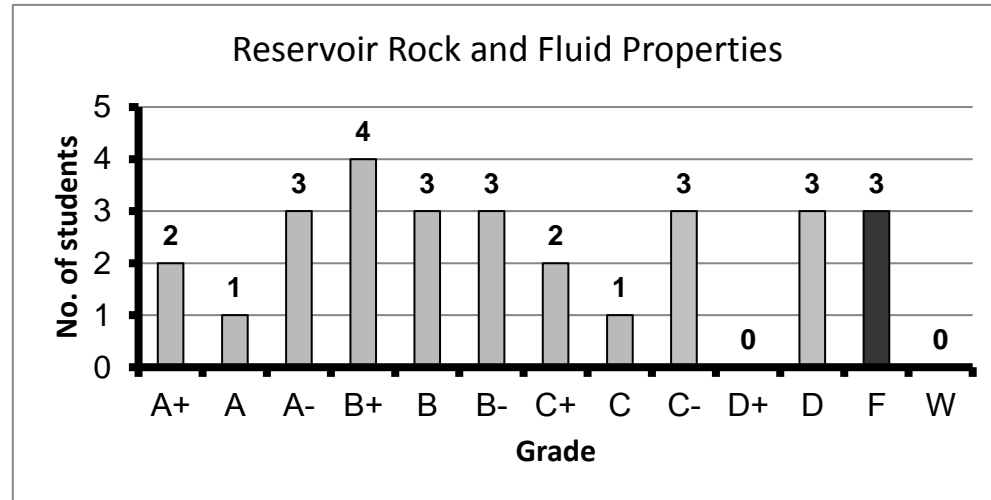
Course: General Geology
 Programs: PPC
 Code: PEN102
 Student: 16
 A+ to C: 100%
 C- to D: 0%
 F: 0
 W: 0
 Average: 3.19
 Std Dev: 0.57



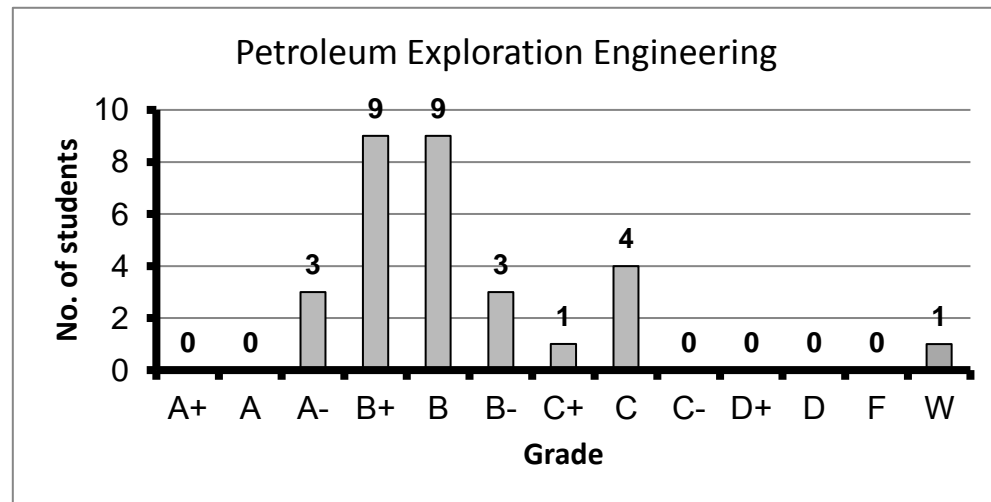
Course: Drilling Engineering-1
 Programs: PPC
 Code: PEN201
 Student: 39
 A+ to C: 69%
 C- to D: 23%
 F: 3
 W: 0
 Average: 2.38
 Std Dev: 1.15



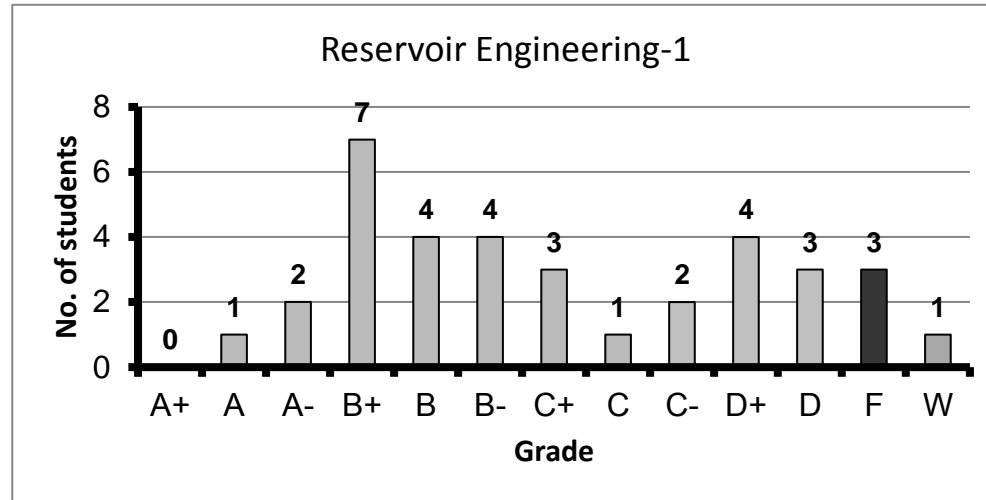
Course: Reservoir Rock and Fluid Properties
 Programs: PPC
 Code: PEN202
 Student: 28
 A+ to C: 68%
 C- to D: 21%
 F: 3
 W: 0
 Average: 2.43
 Std Dev: 1.25



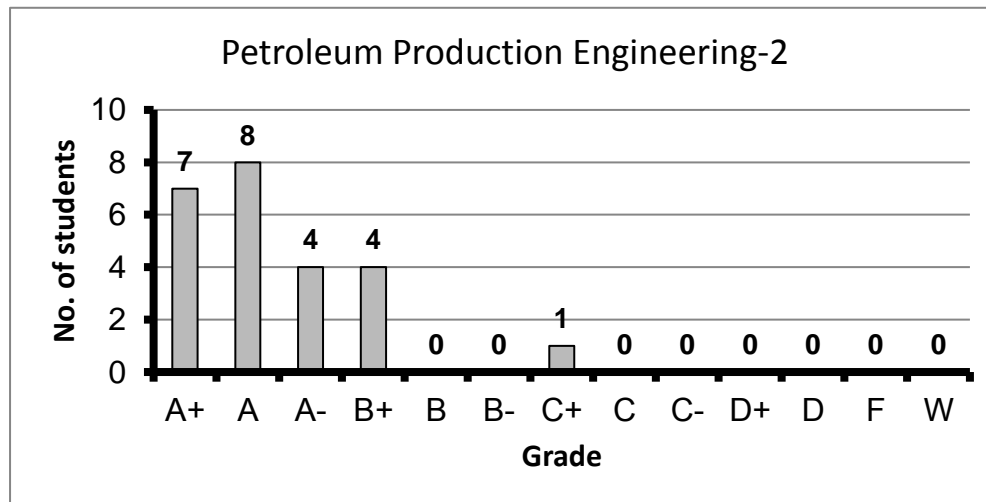
Course: Petroleum Exploration Engineering
 Programs: PPC
 Code: PEN301
 Student: 30
 A+ to C: 100%
 C- to D: 0%
 F: 0
 W: 1
 Average: 2.97
 Std Dev: 0.50



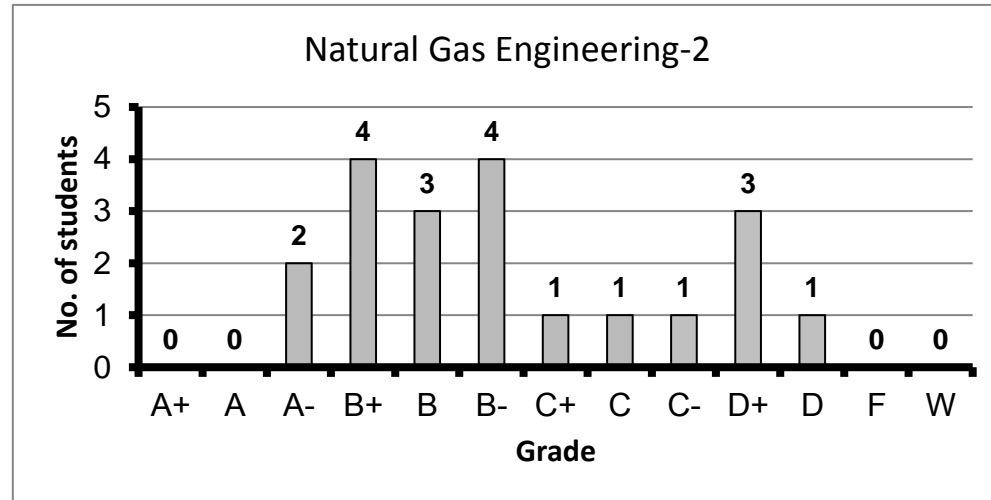
Course: Reservoir Engineering-1
 Programs: PPC
 Code: PEN302
 Student: 35
 A+ to C: 65%
 C- to D: 26%
 F: 3
 W: 1
 Average: 2.30
 Std Dev: 1.13



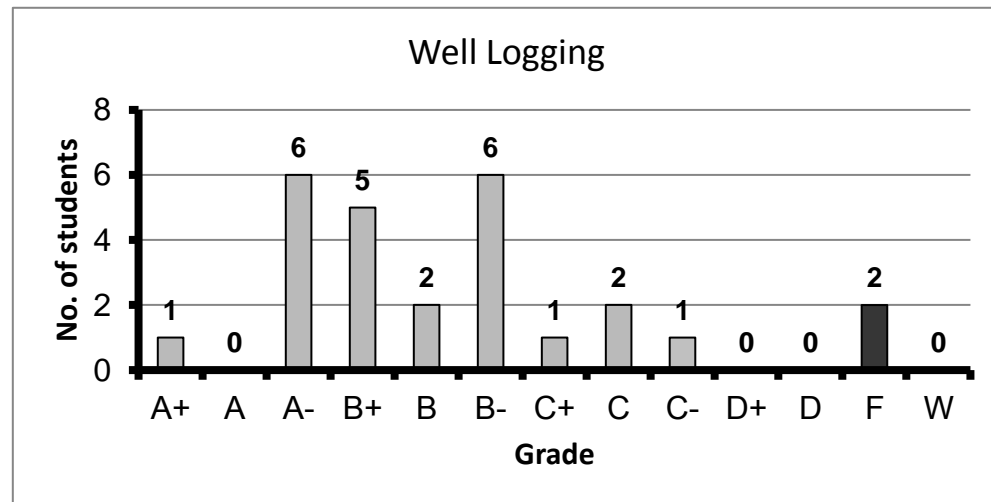
Course: Petroleum Production Engineering-2
 Programs: PPC
 Code: PEN402
 Student: 24
 A+ to C: 100%
 C- to D: 0%
 F: 0
 W: 0
 Average: 3.76
 Std Dev: 0.41



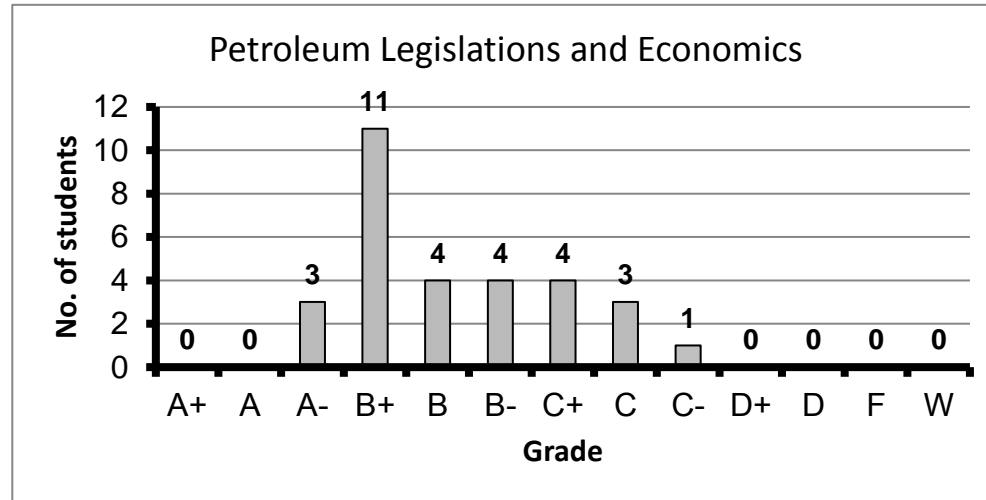
Course: Natural Gas Engineering-2
 Programs: PPC
 Code: PEN403
 Student: 20
 A+ to C: 75%
 C- to D: 25%
 F: 0
 W: 0
 Average: 2.58
 Std Dev: 0.85



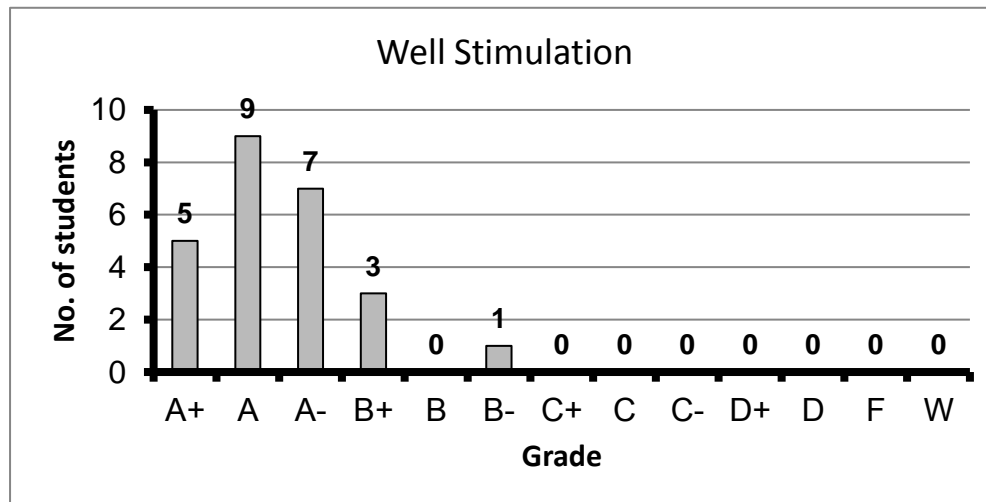
Course: Well Logging
 Programs: PPC
 Code: PEN404
 Student: 26
 A+ to C: 88%
 C- to D: 4%
 F: 2
 W: 0
 Average: 2.80
 Std Dev: 1.02



Course: Petroleum Legislations and Economics
 Programs: PPC
 Code: PEN405
 Student: 30
 A+ to C: 97%
 C- to D: 3%
 F: 0
 W: 0
 Average: 2.90
 Std Dev: 0.56



Course: Well Stimulation
 Programs: PPC
 Code: PEN409
 Student: 25
 A+ to C: 100%
 C- to D: 0%
 F: 0
 W: 0
 Average: 3.78
 Std Dev: 0.33



Course: Oil Well Drilling-3
Programs: PPC
Code: PEN410
Student: 24
A+ to C: 100%
C- to D: 0%
F: 0
W: 0
Average: 3.45
Std Dev: 0.50

