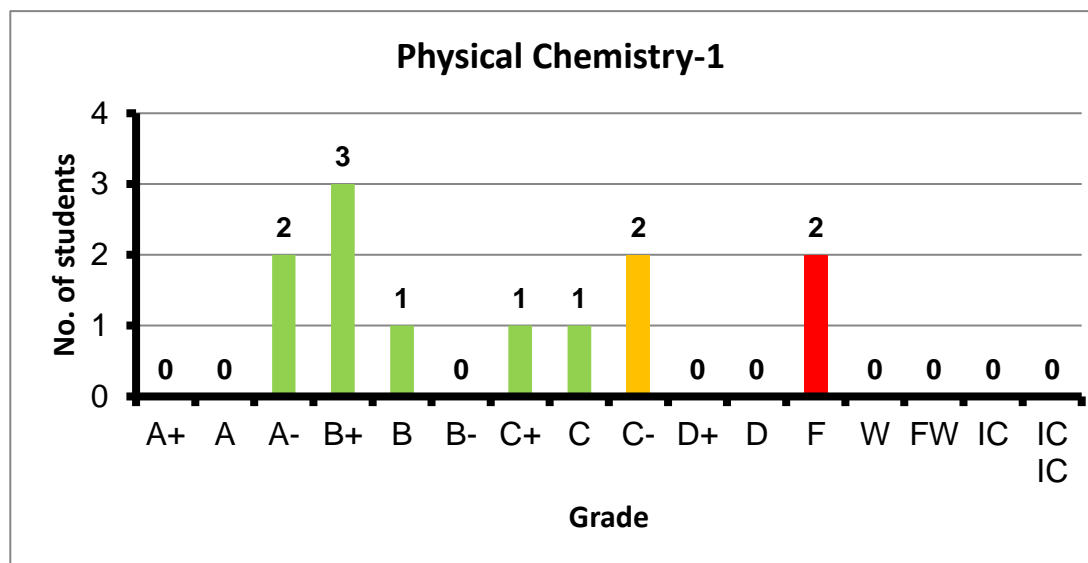
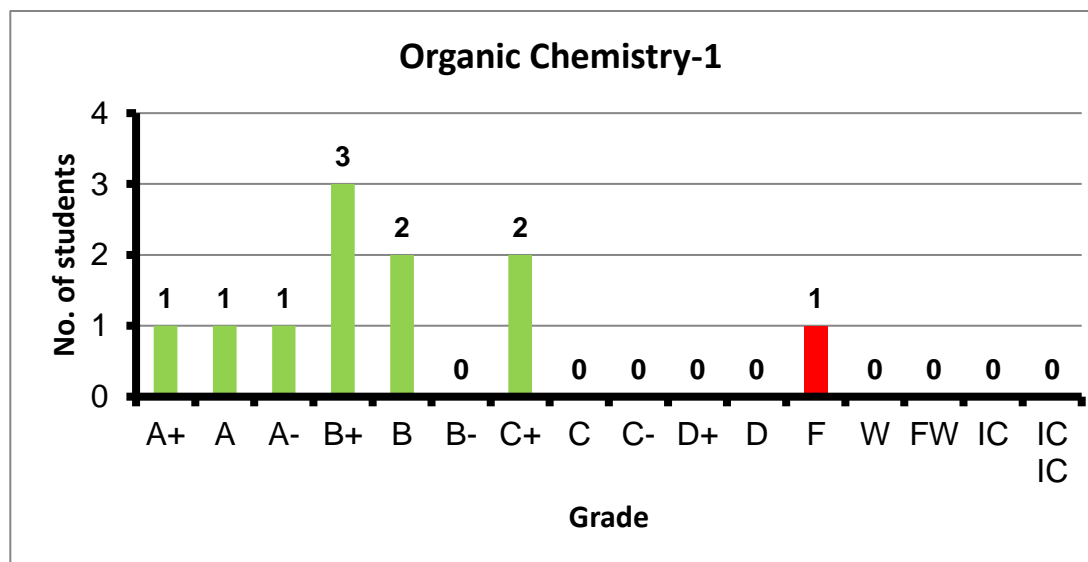


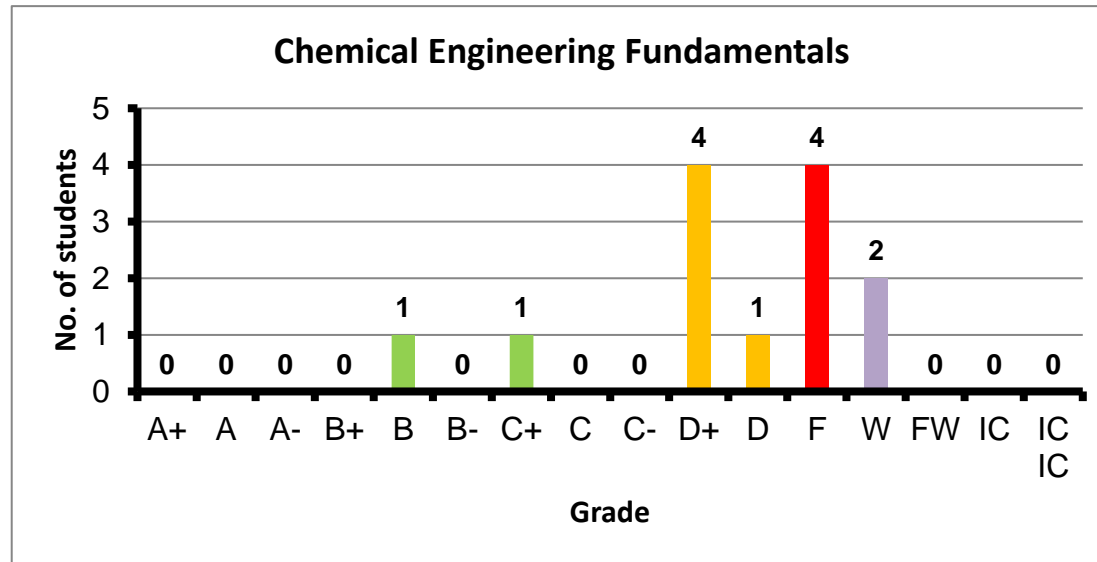
Course: Physical Chemistry-1  
 Programs: PPC  
 Code: CHEN101  
 Student: 12  
 A+ to C: 67%  
 C- to D: 17%  
 F: 2  
 W: 0  
 Average: 2.33  
 Std Dev: 2.77



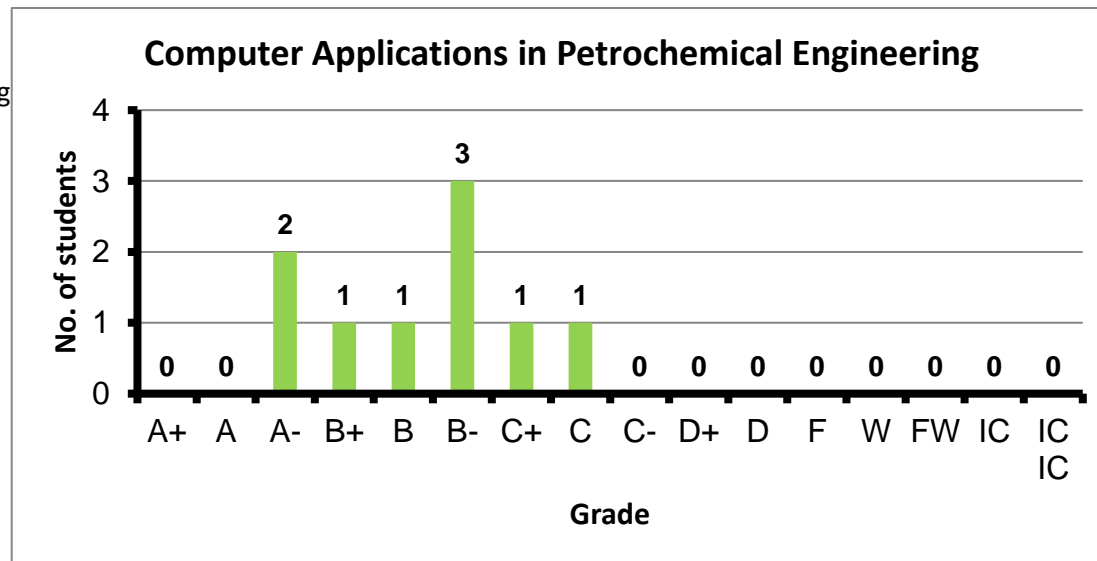
Course: Organic Chemistry-1  
 Programs: PPC  
 Code: CHEN102  
 Student: 11  
 A+ to C: 91%  
 C- to D: 0%  
 F: 1  
 W: 0  
 Average: 2.93  
 Std Dev: 3.27



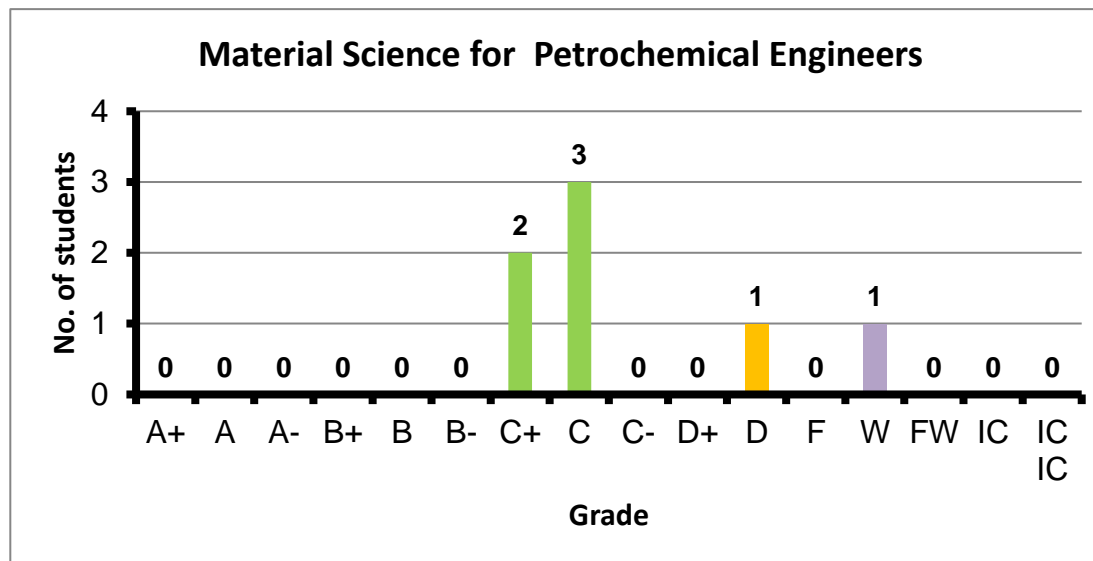
Course: Chemical Engineering Fundamentals  
 Programs: PPC  
 Code: CHEN103  
 Student: 13  
 A+ to C: 15%  
 C- to D: 38%  
 F: 4  
 W: 2  
 Average: 1.08  
 Std Dev: 1.37



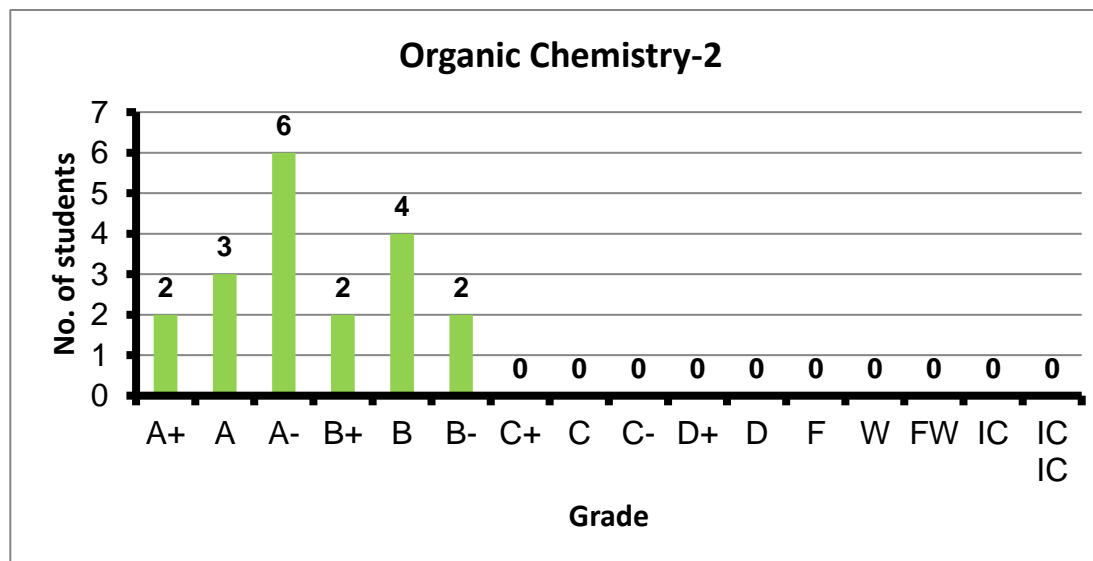
Course: Computer Applications in Petrochemical Eng  
 Programs: PPC  
 Code: CHEN106  
 Student: 9  
 A+ to C: 100%  
 C- to D: 0%  
 F: 0  
 W: 0  
 Average: 2.90  
 Std Dev: 3.13



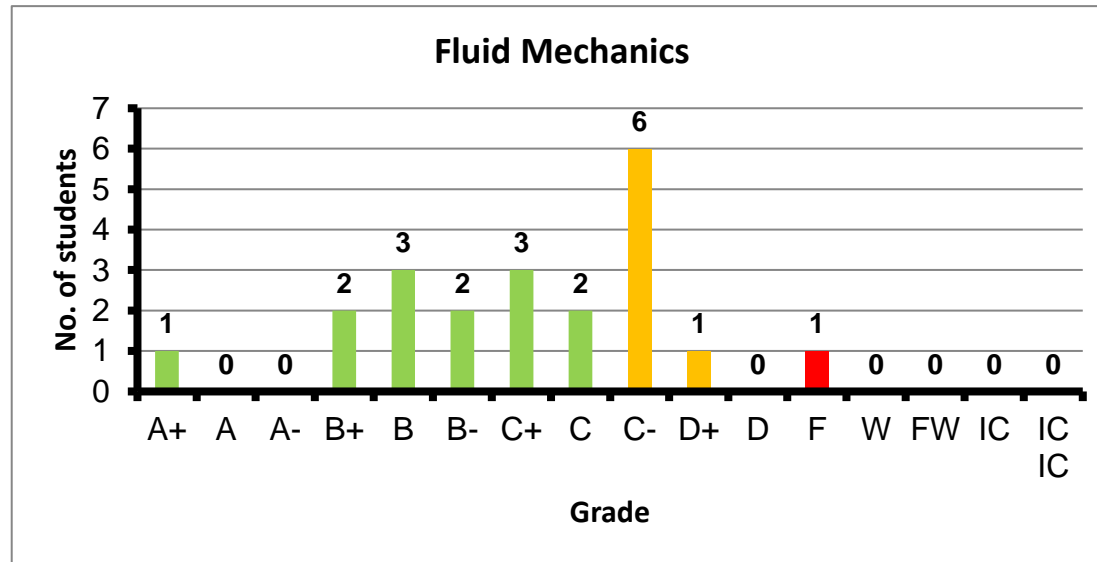
Course: Material Science for Petrochemical Engineers  
 Programs: PPC  
 Code: CHEN107  
 Student: 7  
 A+ to C: 71%  
 C- to D: 14%  
 F: 0  
 W: 1  
 Average: 1.93  
 Std Dev: 2.02



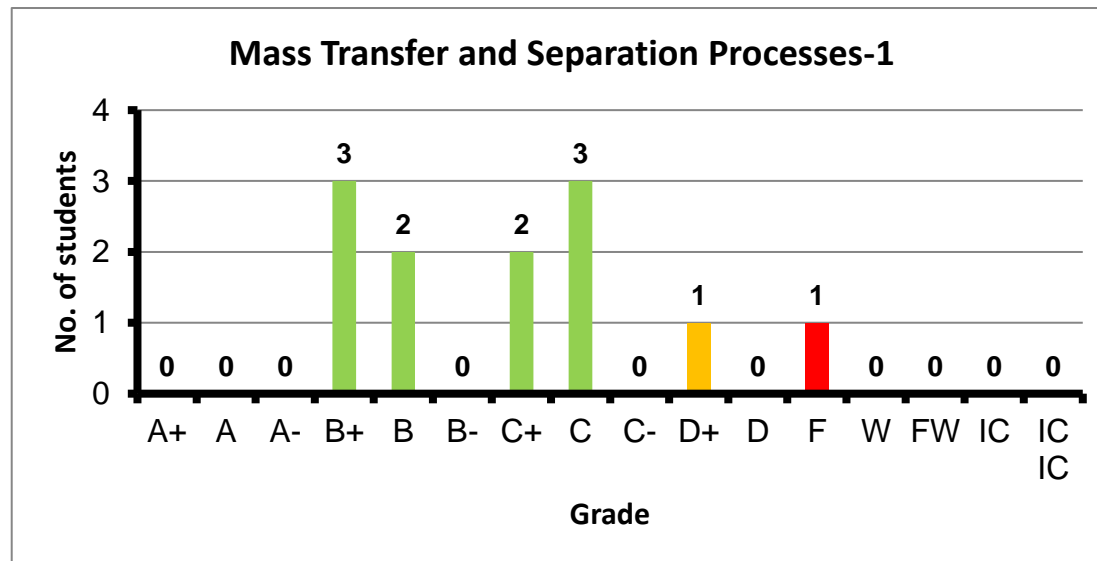
Course: Organic Chemistry-2  
 Programs: PPC  
 Code: CHEN201  
 Student: 19  
 A+ to C: 100%  
 C- to D: 0%  
 F: 0  
 W: 0  
 Average: 3.48  
 Std Dev: 3.61



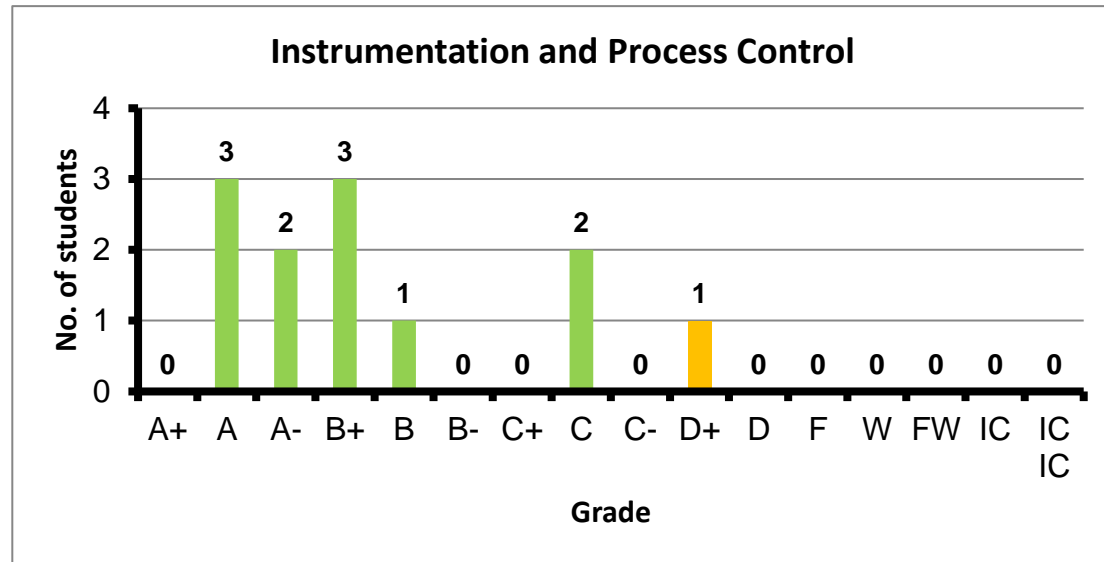
Course: Fluid Mechanics  
 Programs: PPC  
 Code: CHEN202  
 Student: 21  
 A+ to C: 62%  
 C- to D: 33%  
 F: 1  
 W: 0  
 Average: 2.26  
 Std Dev: 2.47



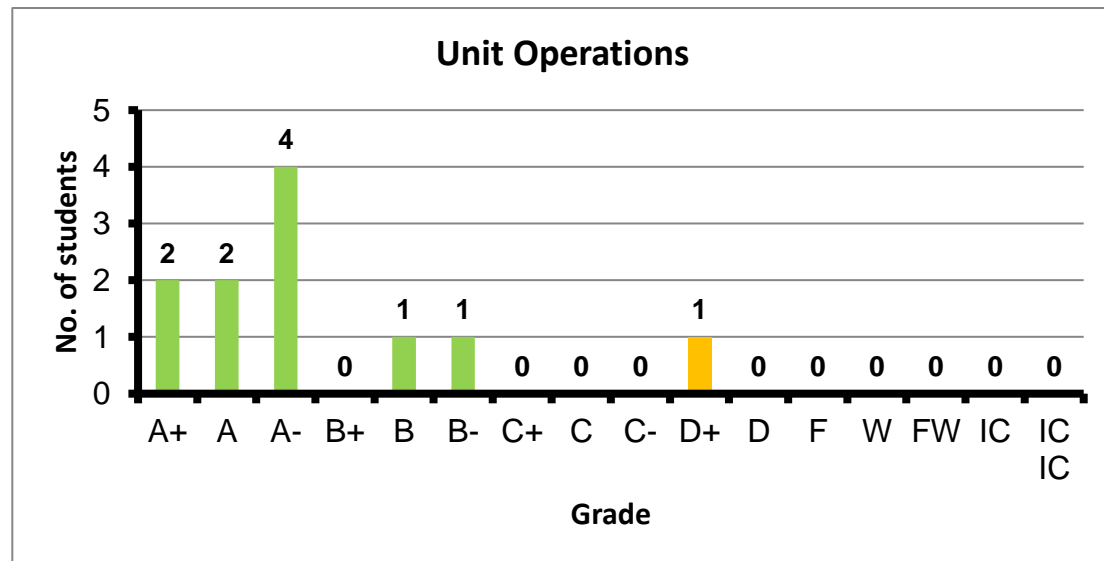
Course: Mass Transfer and Separation Processes-1  
 Programs: PPC  
 Code: CHEN301  
 Student: 12  
 A+ to C: 83%  
 C- to D: 8%  
 F: 1  
 W: 0  
 Average: 2.33  
 Std Dev: 2.61



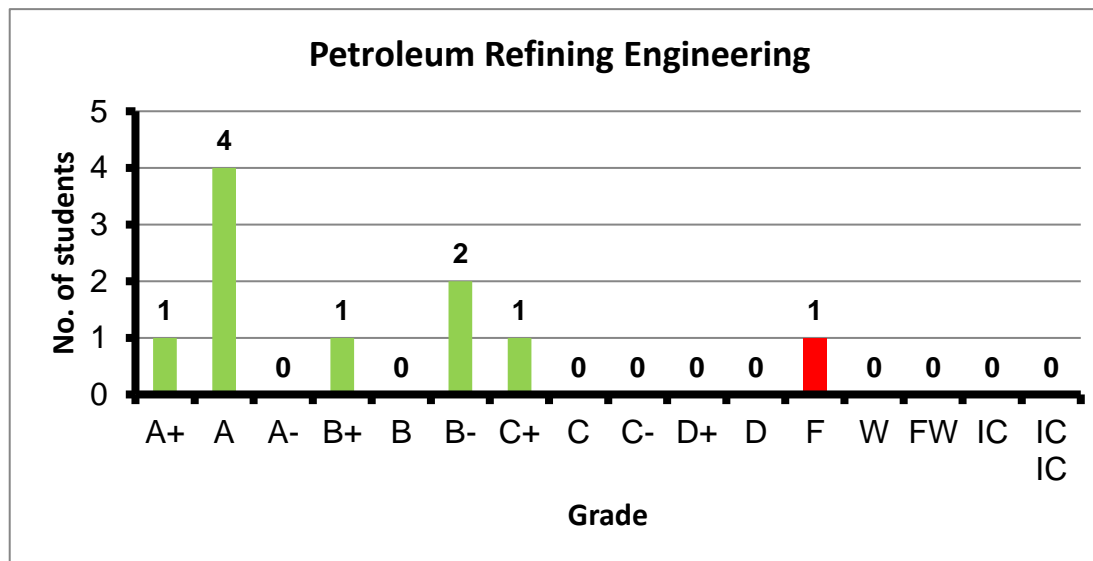
Course: Instrumentation and Process Control  
 Programs: PPC  
 Code: CHEN302  
 Student: 12  
 A+ to C: 92%  
 C- to D: 8%  
 F: 0  
 W: 0  
 Average: 3.14  
 Std Dev: 3.39



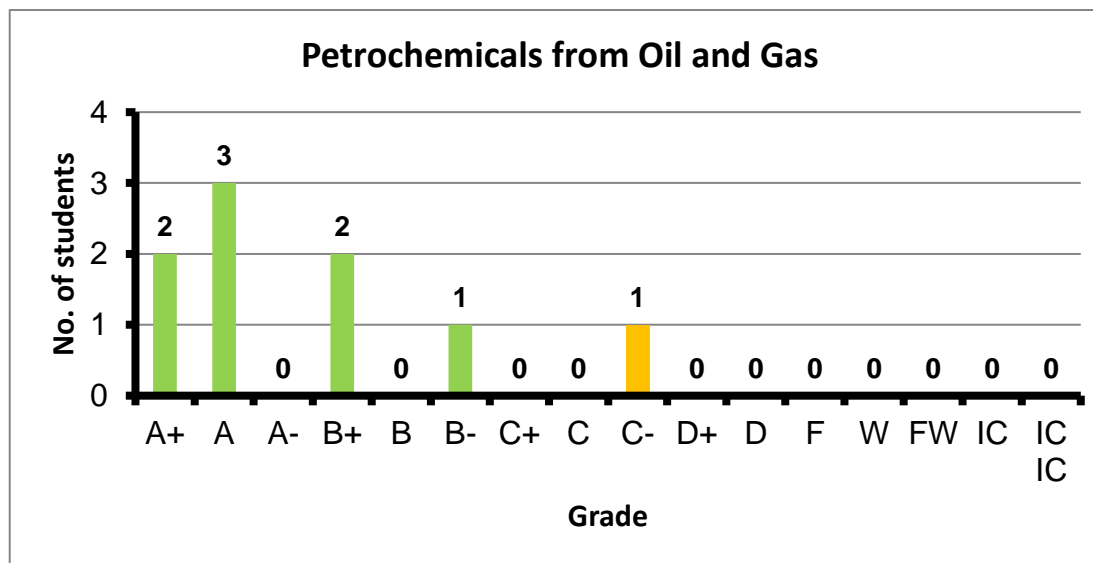
Course: Unit Operations  
 Programs: PPC  
 Code: CHEN304  
 Student: 11  
 A+ to C: 91%  
 C- to D: 9%  
 F: 0  
 W: 0  
 Average: 3.45  
 Std Dev: 3.70



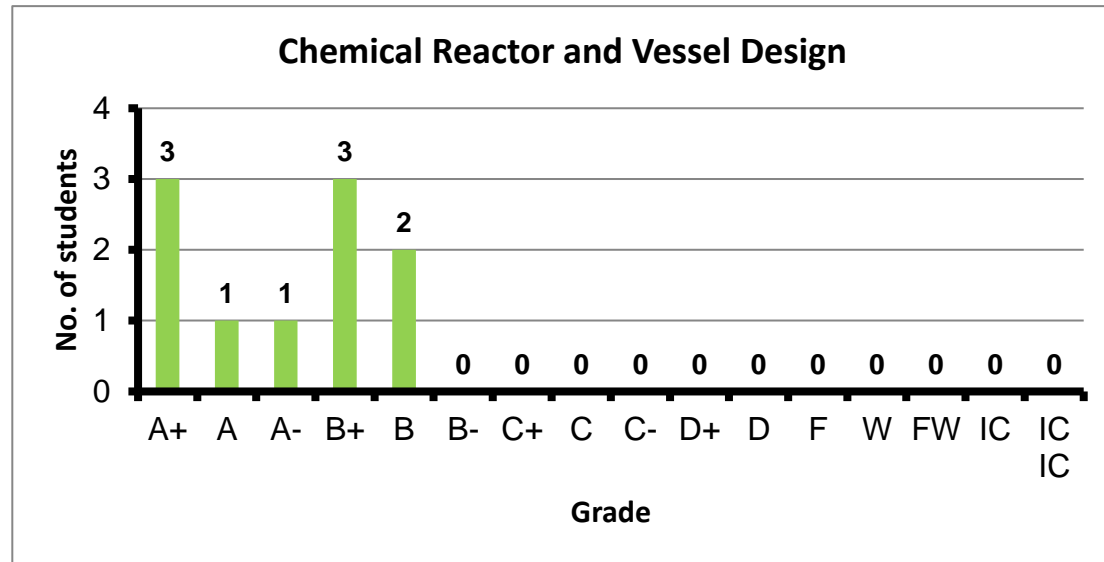
Course: Petroleum Refining Engineering  
 Programs: PPC  
 Code: CHEN401  
 Student: 10  
 A+ to C: 90%  
 C- to D: 0%  
 F: 1  
 W: 0  
 Average: 3.10  
 Std Dev: 3.51



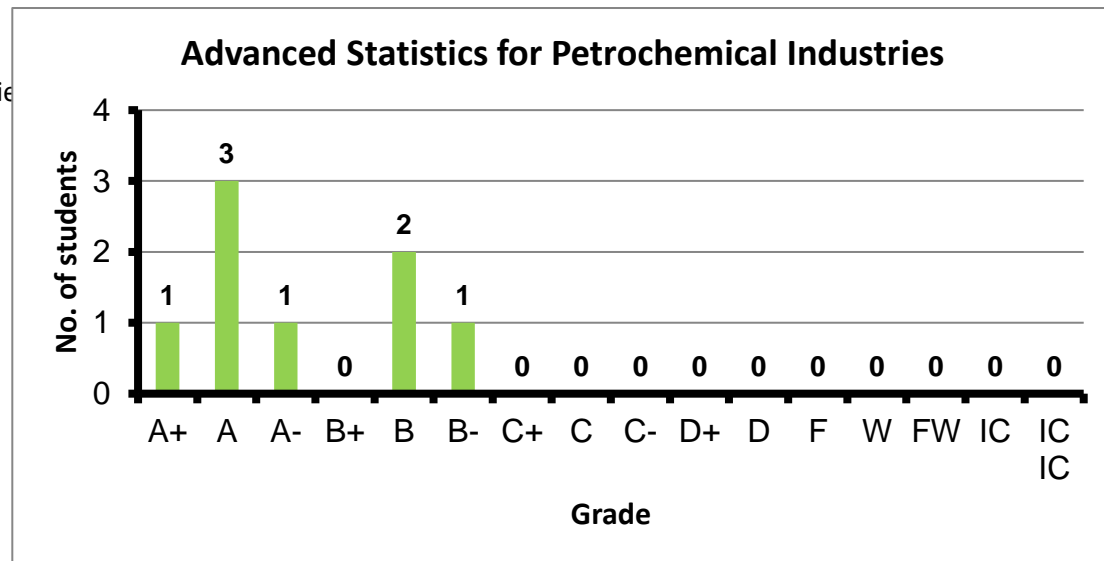
Course: Petrochemicals from Oil and Gas  
 Programs: PPC  
 Code: CHEN402  
 Student: 9  
 A+ to C: 89%  
 C- to D: 11%  
 F: 0  
 W: 0  
 Average: 3.44  
 Std Dev: 3.74



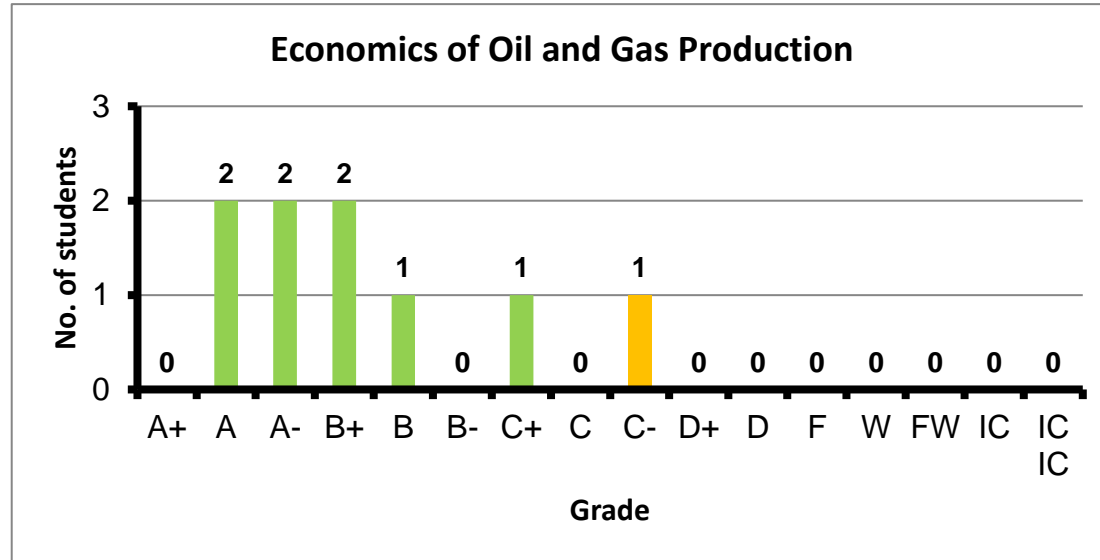
Course: Chemical Reactor and Vessel Design  
 Programs: PPC  
 Code: CHEN403  
 Student: 10  
 A+ to C: 100%  
 C- to D: 0%  
 F: 0  
 W: 0  
 Average: 3.56  
 Std Dev: 3.78



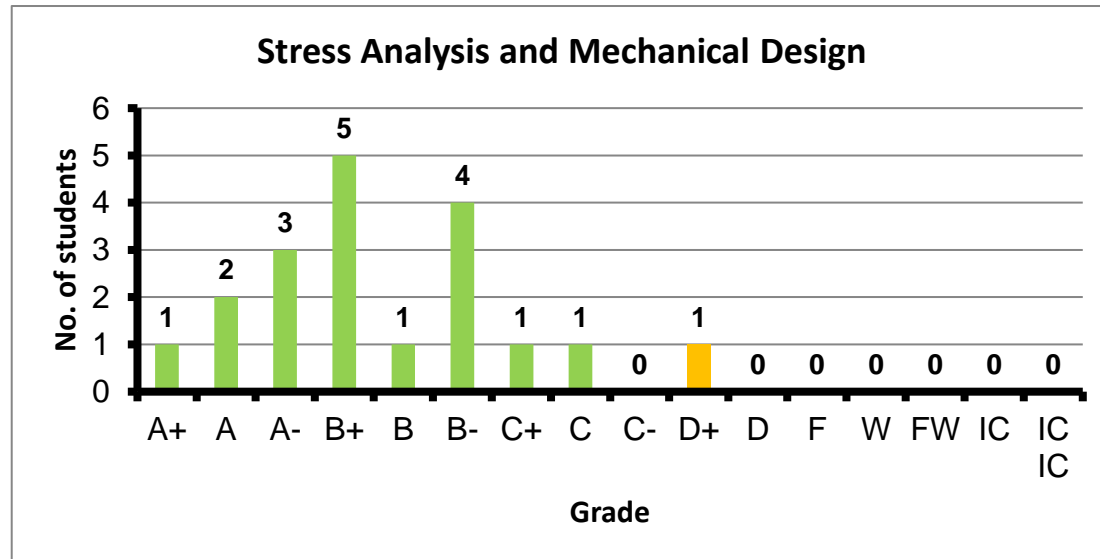
Course: Advanced Statistics for Petrochemical Industries  
 Programs: PPC  
 Code: CHEN406  
 Student: 8  
 A+ to C: 100%  
 C- to D: 0%  
 F: 0  
 W: 0  
 Average: 3.55  
 Std Dev: 3.84



Course: Economics of Oil and Gas Production  
 Programs: PPC  
 Code: CHEN408  
 Student: 9  
 A+ to C: 89%  
 C- to D: 11%  
 F: 0  
 W: 0  
 Average: 3.22  
 Std Dev: 3.51

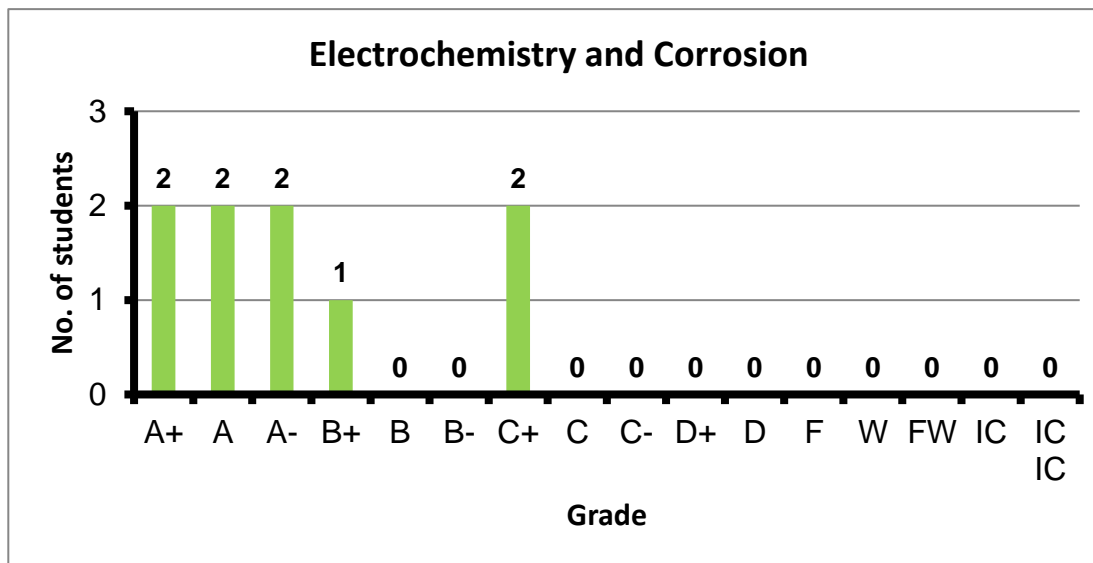


Course: Stress Analysis and Mechanical Design  
 Programs: PPC  
 Code: MDPN201  
 Student: 19  
 A+ to C: 95%  
 C- to D: 5%  
 F: 0  
 W: 0  
 Average: 3.11  
 Std Dev: 3.27

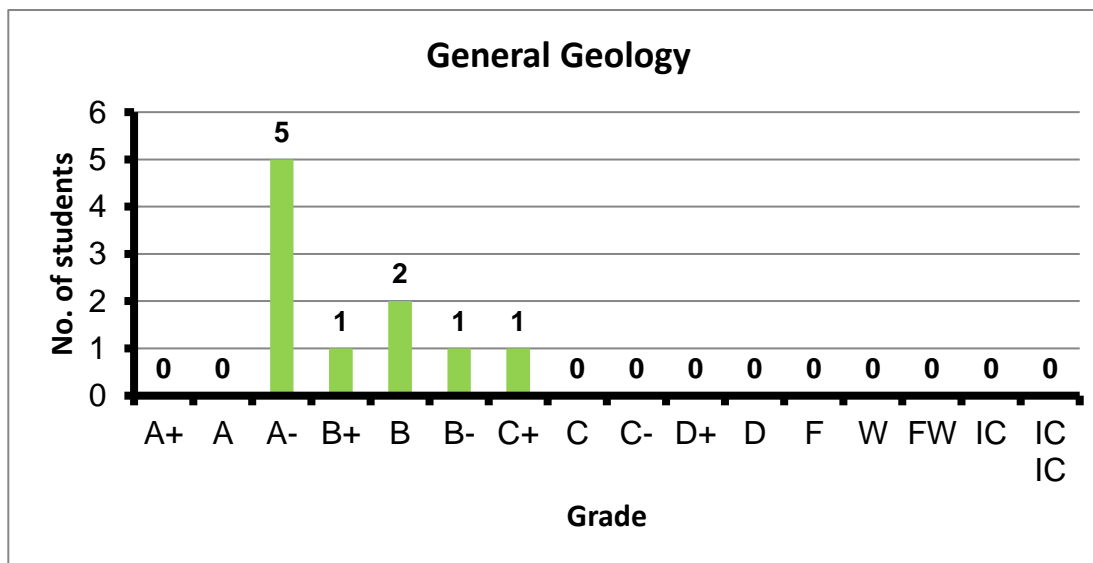




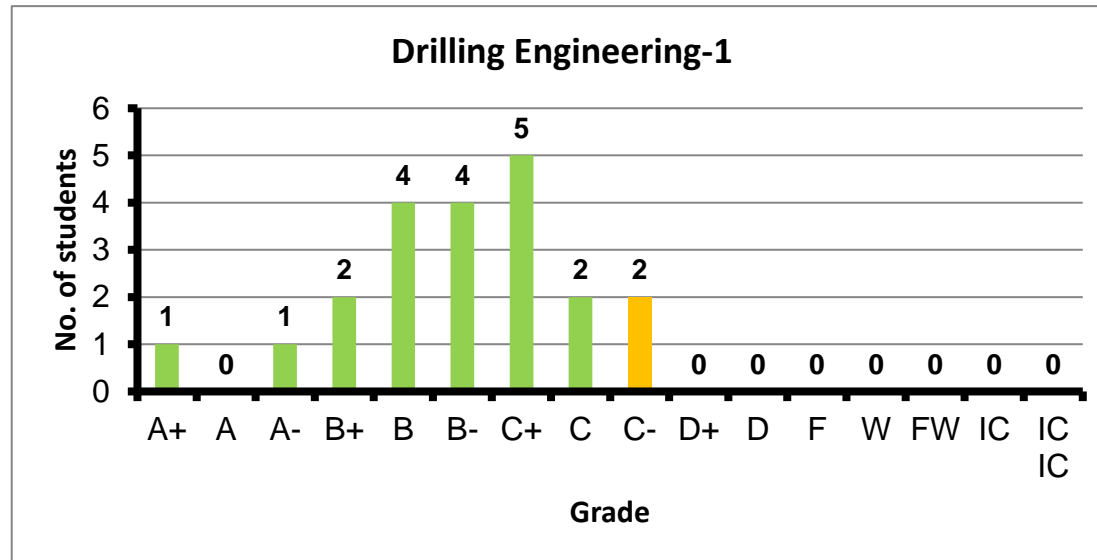
Course: Electrochemistry and Corrosion  
 Programs: PPC  
 Code: METN401  
 Student: 9  
 A+ to C: 100%  
 C- to D: 0%  
 F: 0  
 W: 0  
 Average: 3.48  
 Std Dev: 3.76



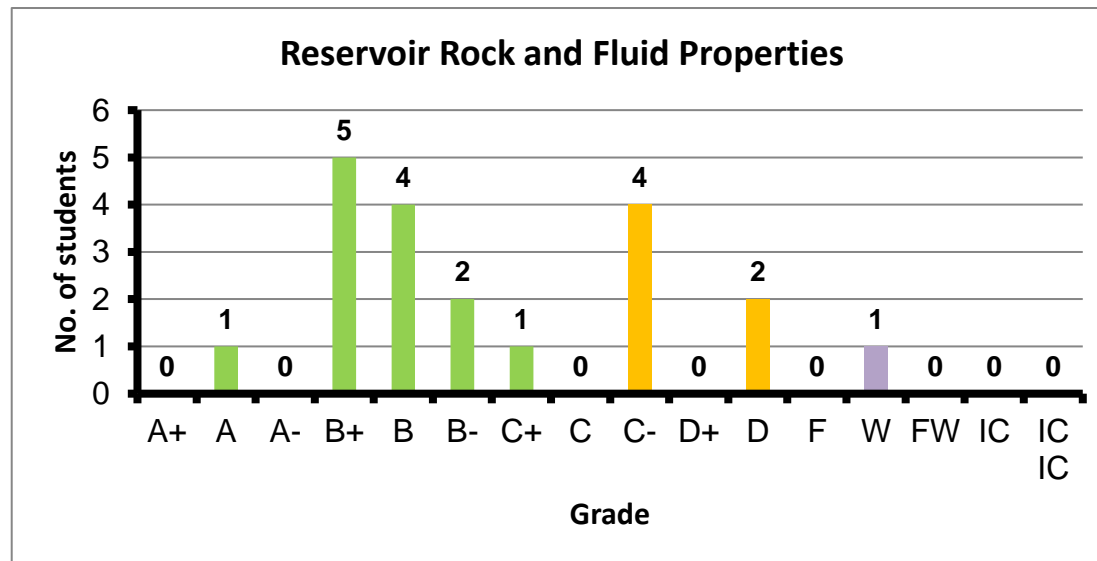
Course: General Geology  
 Programs: PPC  
 Code: PEN102  
 Student: 10  
 A+ to C: 100%  
 C- to D: 0%  
 F: 0  
 W: 0  
 Average: 3.28  
 Std Dev: 3.49



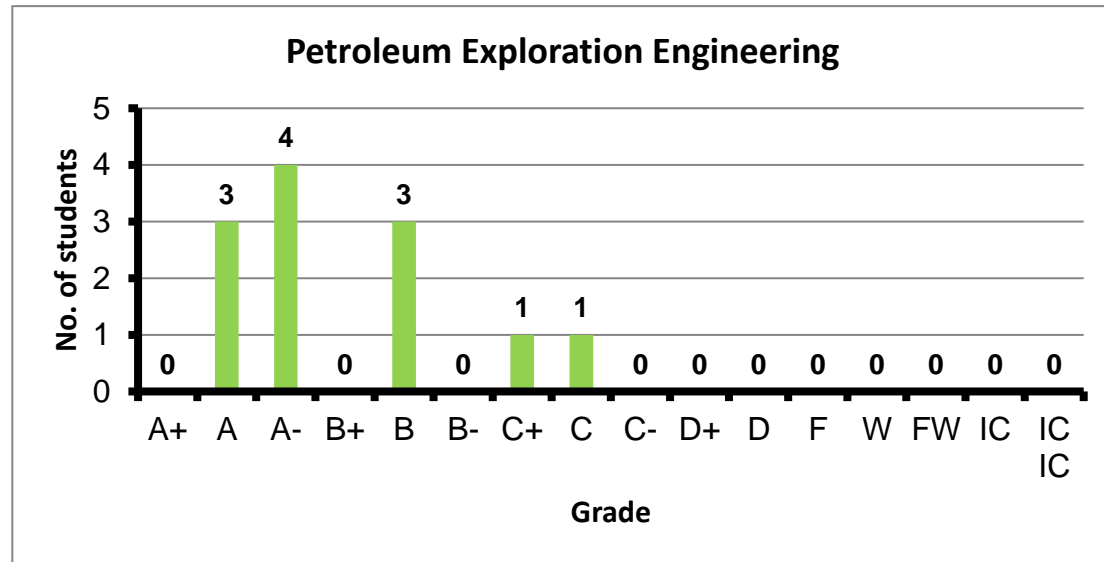
Course: Drilling Engineering-1  
 Programs: PPC  
 Code: PEN201  
 Student: 21  
 A+ to C: 90%  
 C- to D: 10%  
 F: 0  
 W: 0  
 Average: 2.67  
 Std Dev: 2.80



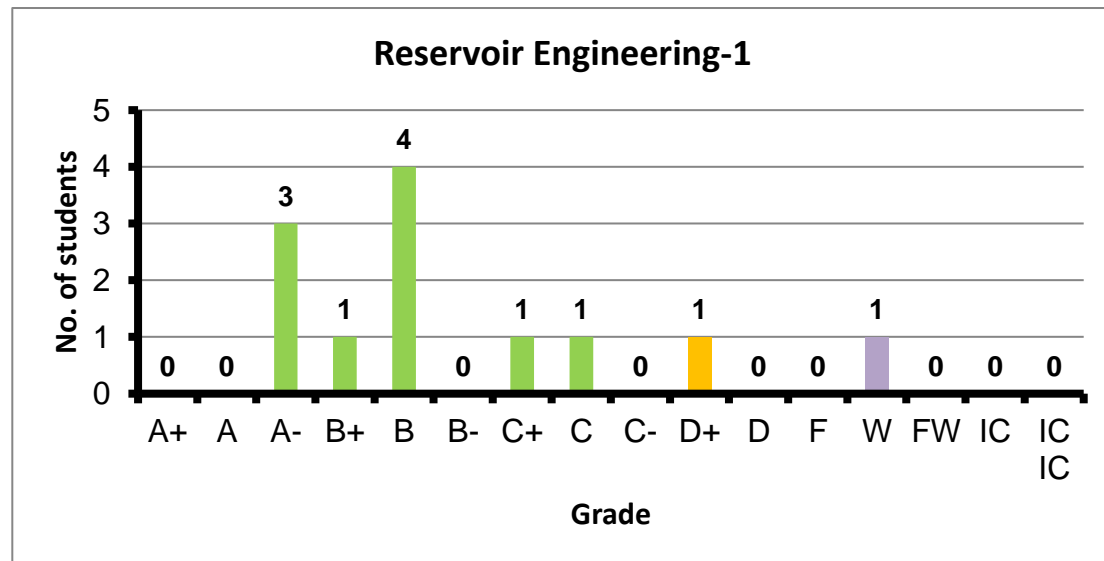
Course: Reservoir Rock and Fluid Properties  
 Programs: PPC  
 Code: PEN202  
 Student: 20  
 A+ to C: 65%  
 C- to D: 30%  
 F: 0  
 W: 1  
 Average: 2.58  
 Std Dev: 2.74



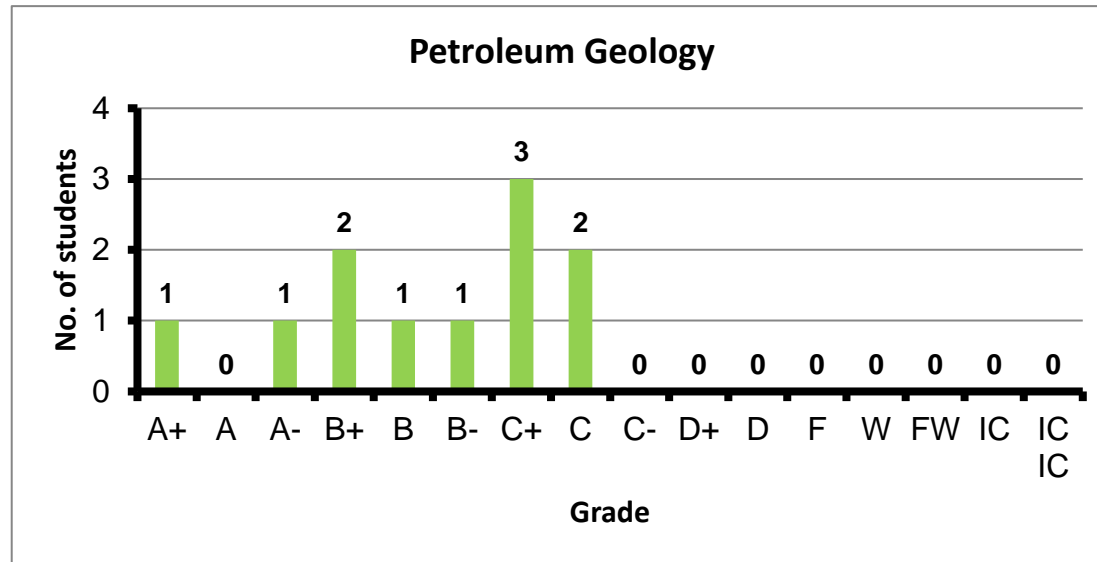
Course: Petroleum Exploration Engineering  
 Programs: PPC  
 Code: PEN301  
 Student: 12  
 A+ to C: 100%  
 C- to D: 0%  
 F: 0  
 W: 0  
 Average: 3.34  
 Std Dev: 3.56



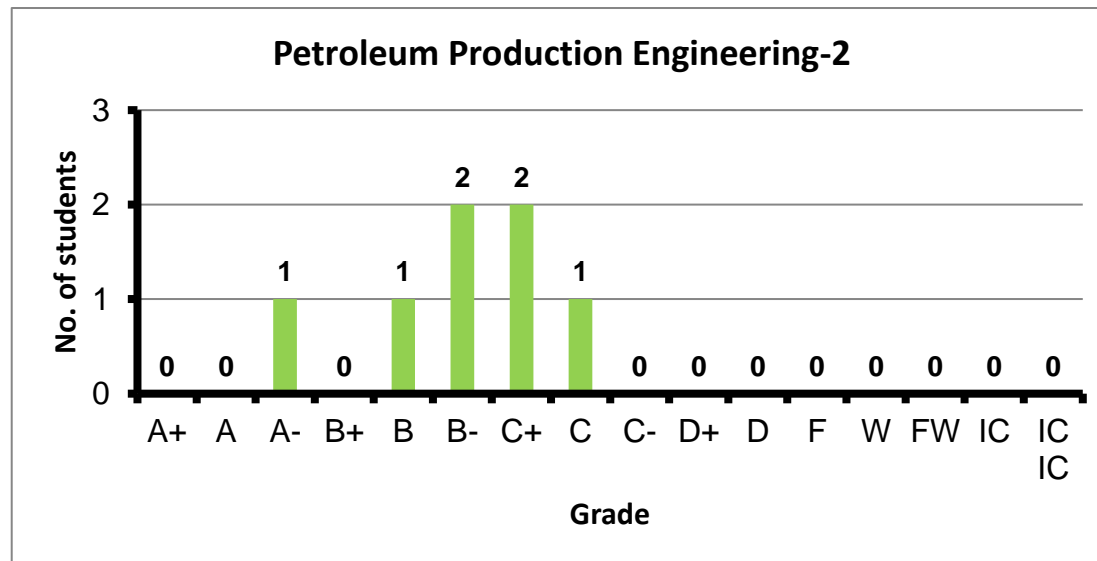
Course: Reservoir Engineering-1  
 Programs: PPC  
 Code: PEN302  
 Student: 12  
 A+ to C: 83%  
 C- to D: 8%  
 F: 0  
 W: 1  
 Average: 2.92  
 Std Dev: 3.06



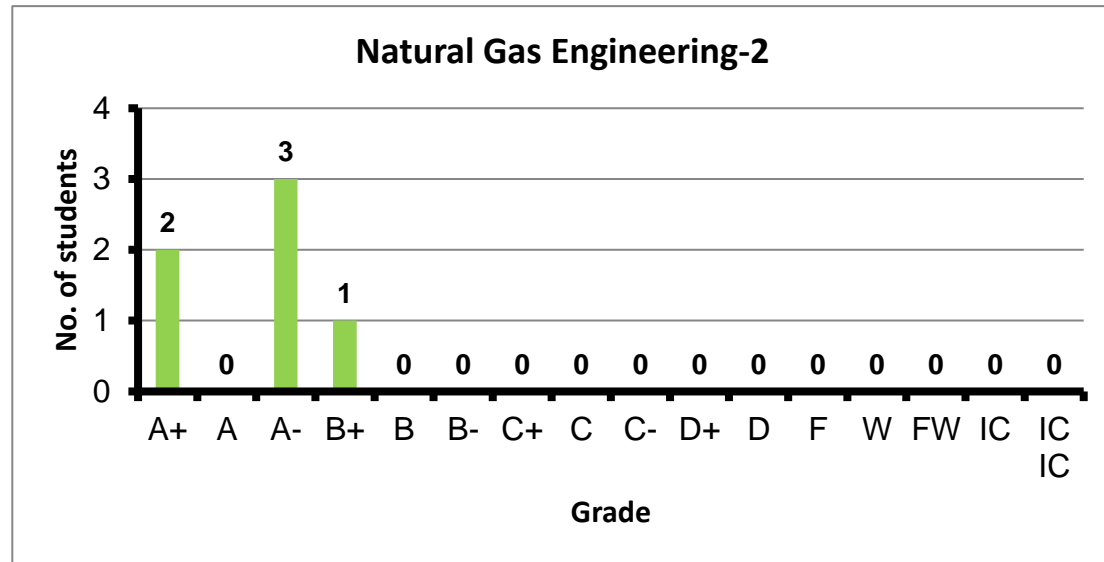
Course: Petroleum Geology  
 Programs: PPC  
 Code: PEN305  
 Student: 11  
 A+ to C: 100%  
 C- to D: 0%  
 F: 0  
 W: 0  
 Average: 2.81  
 Std Dev: 3.03



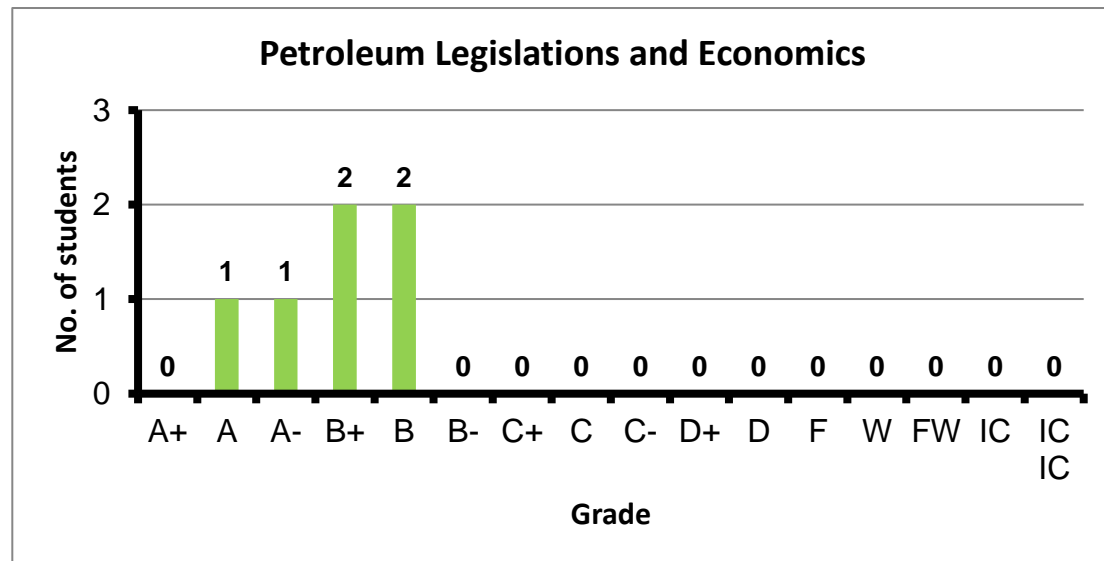
Course: Petroleum Production Engineering-2  
 Programs: PPC  
 Code: PEN402  
 Student: 7  
 A+ to C: 100%  
 C- to D: 0%  
 F: 0  
 W: 0  
 Average: 2.67  
 Std Dev: 2.94



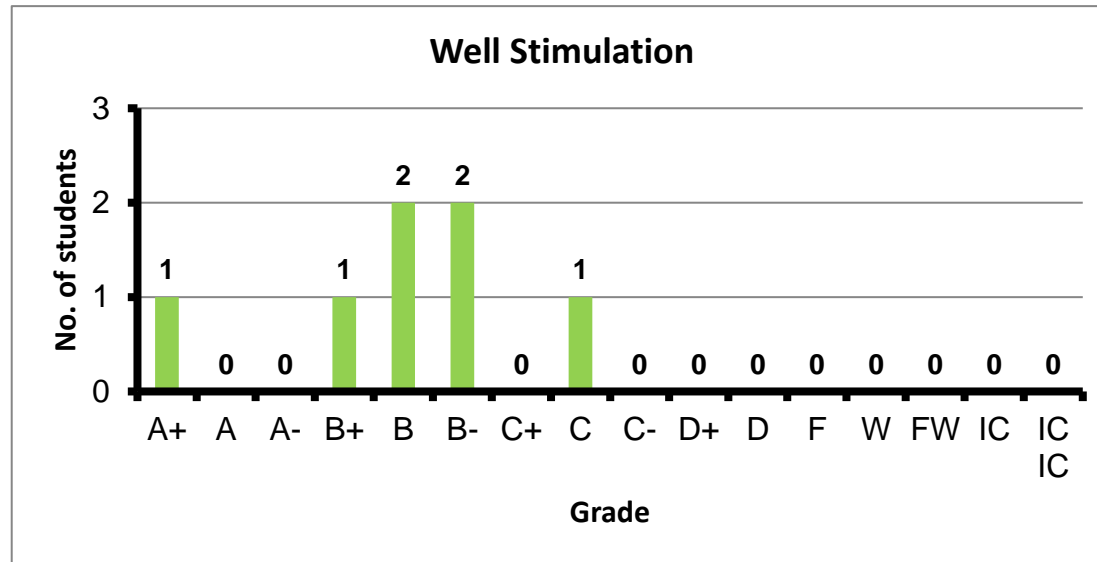
Course: Natural Gas Engineering-2  
 Programs: PPC  
 Code: PEN403  
 Student: 6  
 A+ to C: 100%  
 C- to D: 0%  
 F: 0  
 W: 0  
 Average: 3.73  
 Std Dev: 4.10



Course: Petroleum Legislations and Economics  
 Programs: PPC  
 Code: PEN405  
 Student: 6  
 A+ to C: 100%  
 C- to D: 0%  
 F: 0  
 W: 0  
 Average: 3.38  
 Std Dev: 3.73



Course: Well Stimulation  
 Programs: PPC  
 Code: PEN409  
 Student: 7  
 A+ to C: 100%  
 C- to D: 0%  
 F: 0  
 W: 0  
 Average: 2.96  
 Std Dev: 3.25



Course: Enhanced Oil Recovery  
 Programs: PPC  
 Code: PEN413  
 Student: 7  
 A+ to C: 100%  
 C- to D: 0%  
 F: 0  
 W: 0  
 Average: 3.04  
 Std Dev: 3.37

