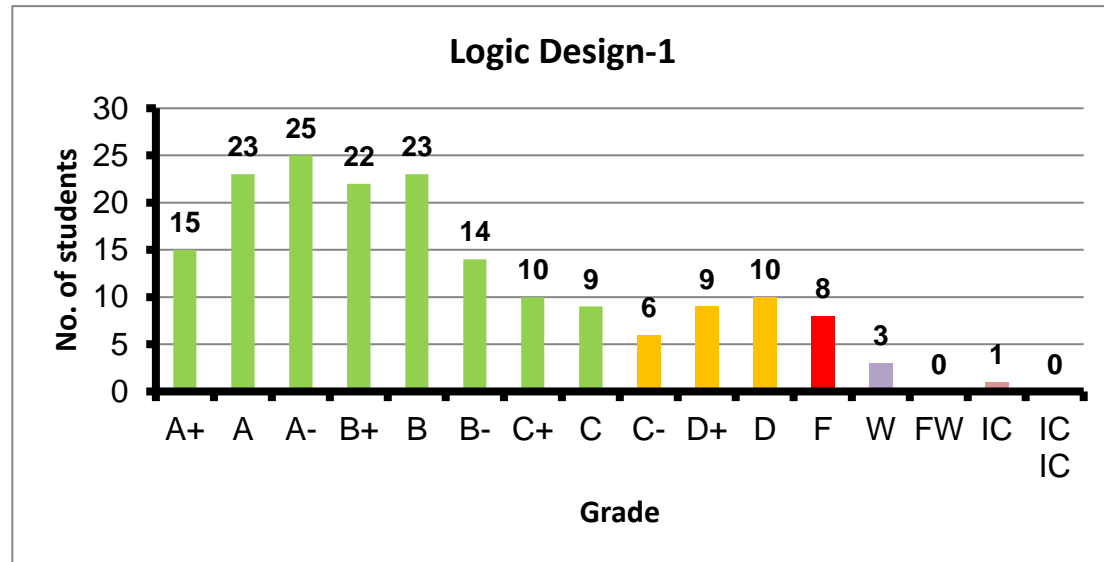
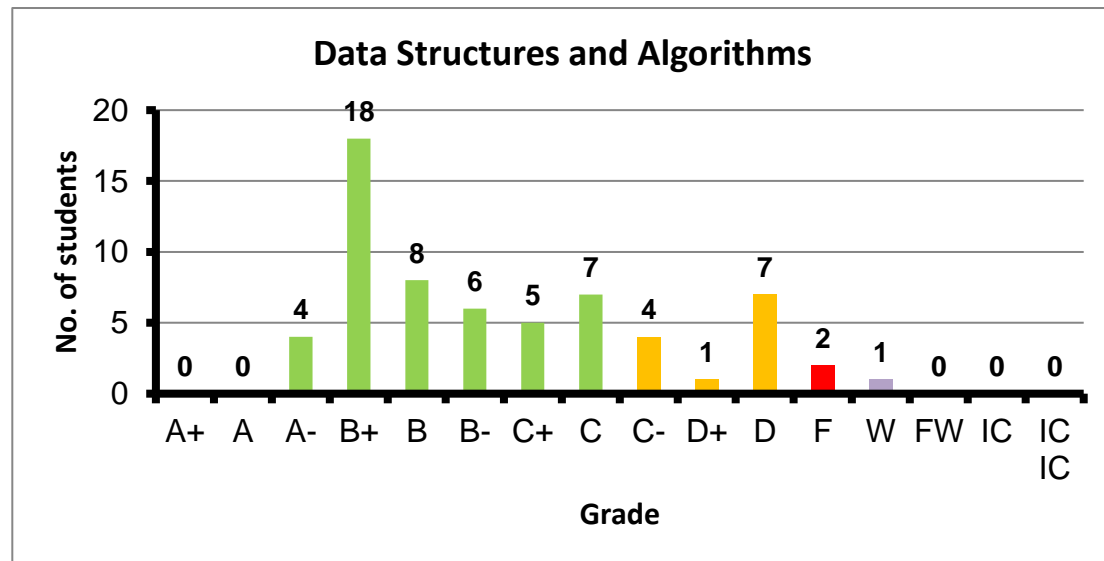


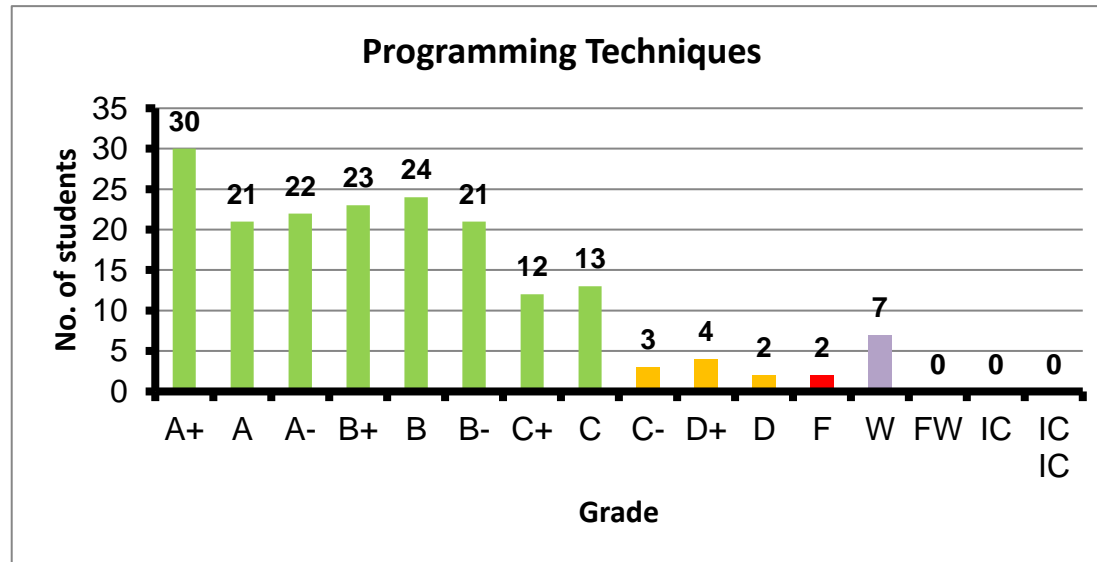
Course: Logic Design-1
 Programs: CCE-C
 Code: CMPN101
 Student: 178
 A+ to C: 79%
 C- to D: 14%
 F: 8
 W: 3
 Average: 2.86
 Std Dev: 3.05



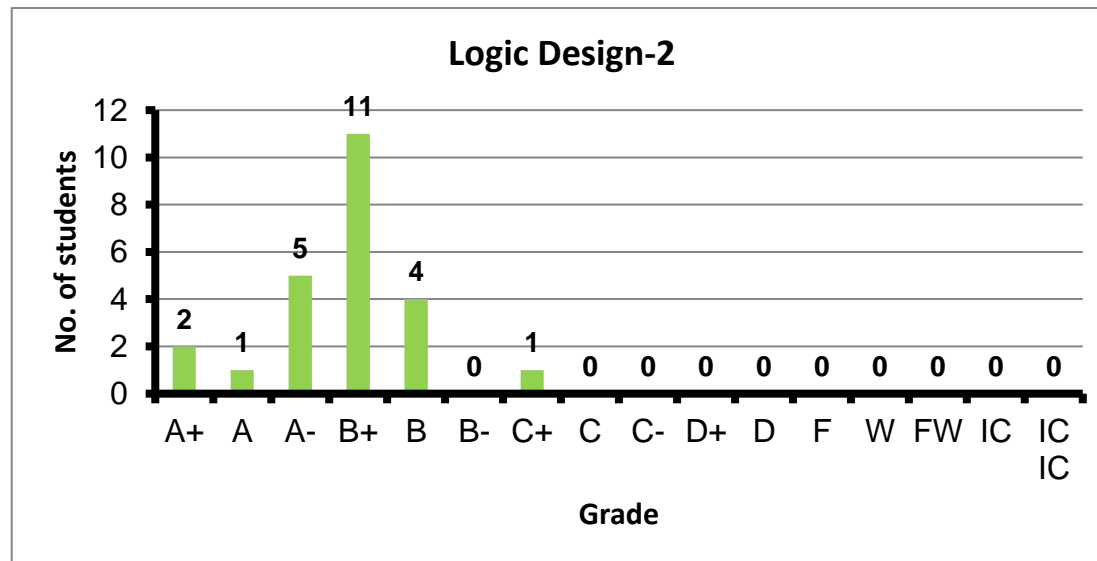
Course: Data Structures and Algorithms
 Programs: CCE-C
 Code: CMPN102
 Student: 63
 A+ to C: 76%
 C- to D: 19%
 F: 2
 W: 1
 Average: 2.50
 Std Dev: 2.67



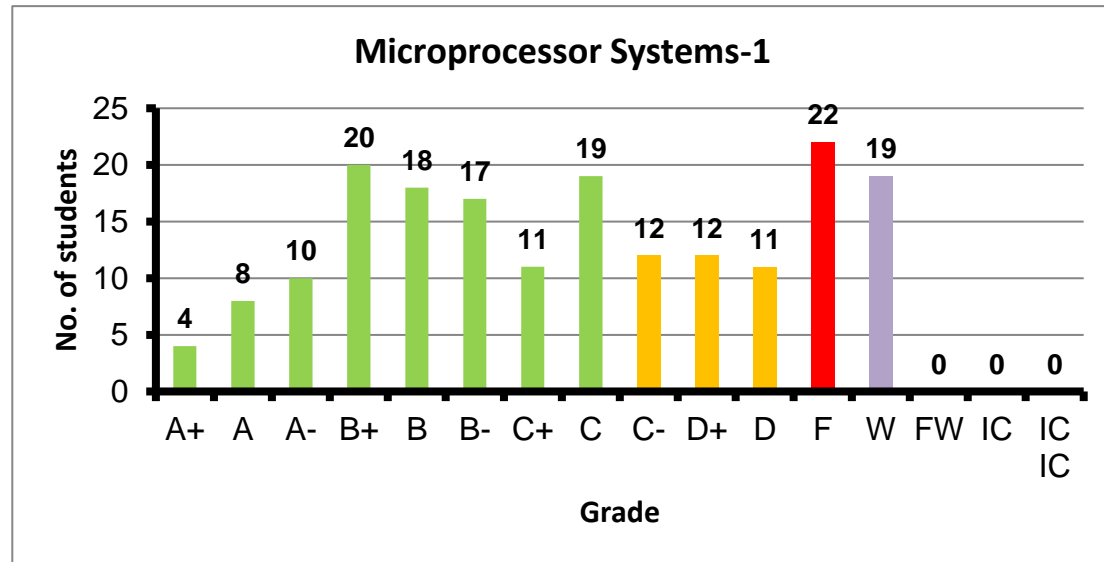
Course: Programming Techniques
 Programs: CCE-C
 Code: CMPN103
 Student: 184
 A+ to C: 90%
 C- to D: 5%
 F: 2
 W: 7
 Average: 3.14
 Std Dev: 3.22



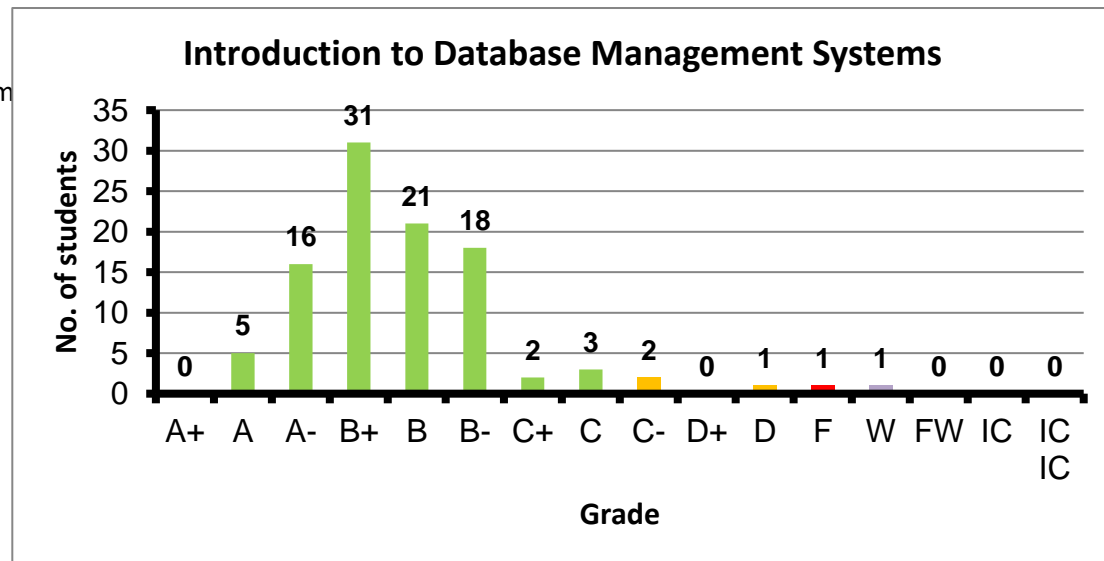
Course: Logic Design-2
 Programs: CCE-C
 Code: CMPN111
 Student: 24
 A+ to C: 100%
 C- to D: 0%
 F: 0
 W: 0
 Average: 3.38
 Std Dev: 3.47



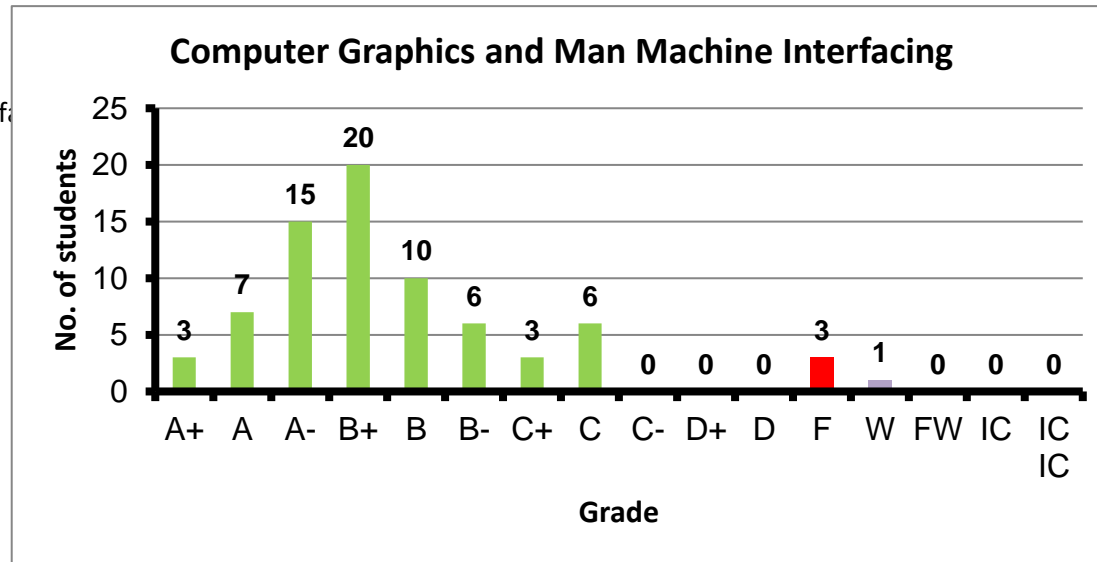
Course: Microprocessor Systems-1
 Programs: CCE-C
 Code: CMPN201
 Student: 183
 A+ to C: 58%
 C- to D: 19%
 F: 22
 W: 19
 Average: 2.21
 Std Dev: 2.43



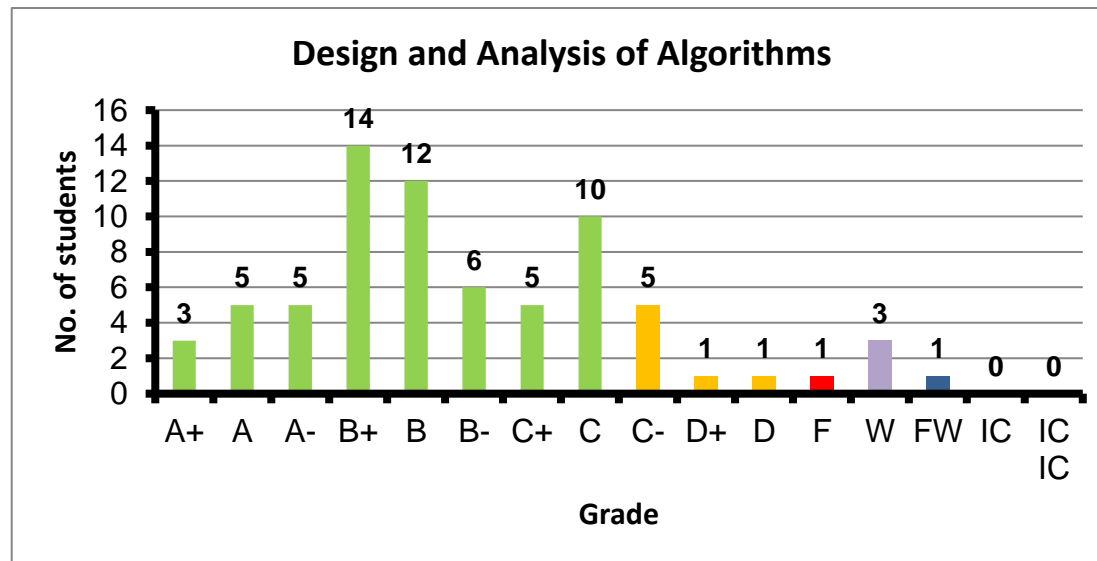
Course: Introduction to Database Management System
 Programs: CCE-C
 Code: CMPN202
 Student: 101
 A+ to C: 95%
 C- to D: 3%
 F: 1
 W: 1
 Average: 3.08
 Std Dev: 3.15



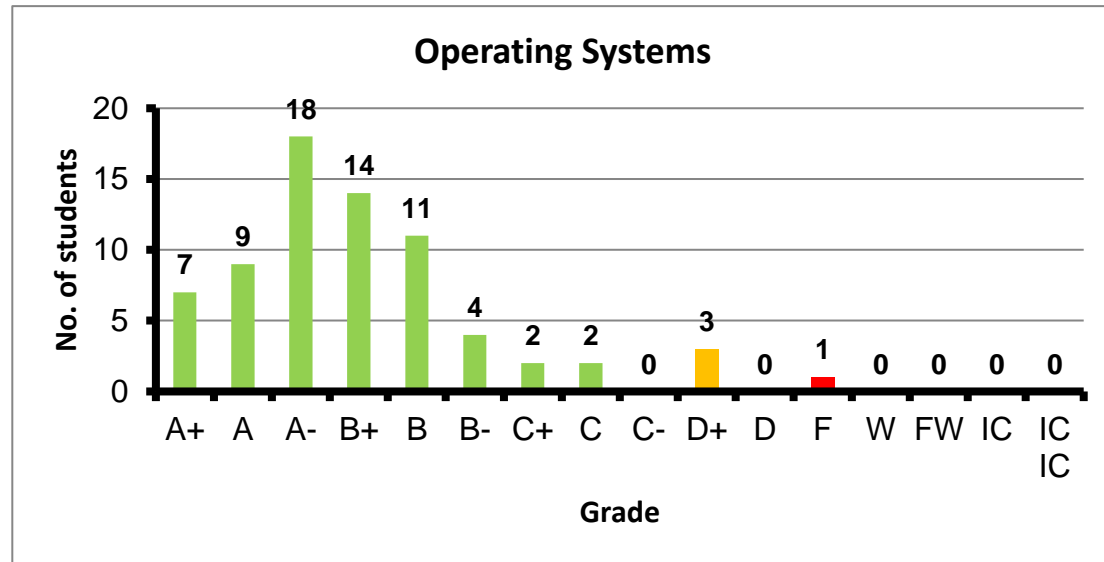
Course: Computer Graphics and Man Machine Interf
 Programs: CCE-C
 Code: CMPN205
 Student: 74
 A+ to C: 95%
 C- to D: 0%
 F: 3
 W: 1
 Average: 3.10
 Std Dev: 3.23



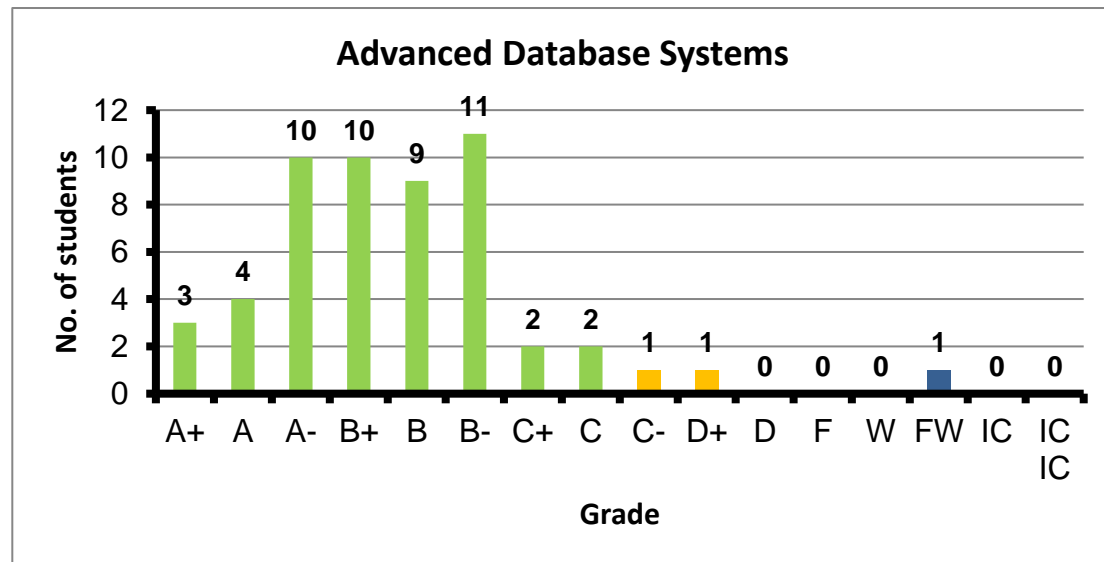
Course: Design and Analysis of Algorithms
 Programs: CCE-C
 Code: CMPN302
 Student: 72
 A+ to C: 83%
 C- to D: 10%
 F: 1
 W: 3
 Average: 2.81
 Std Dev: 2.91



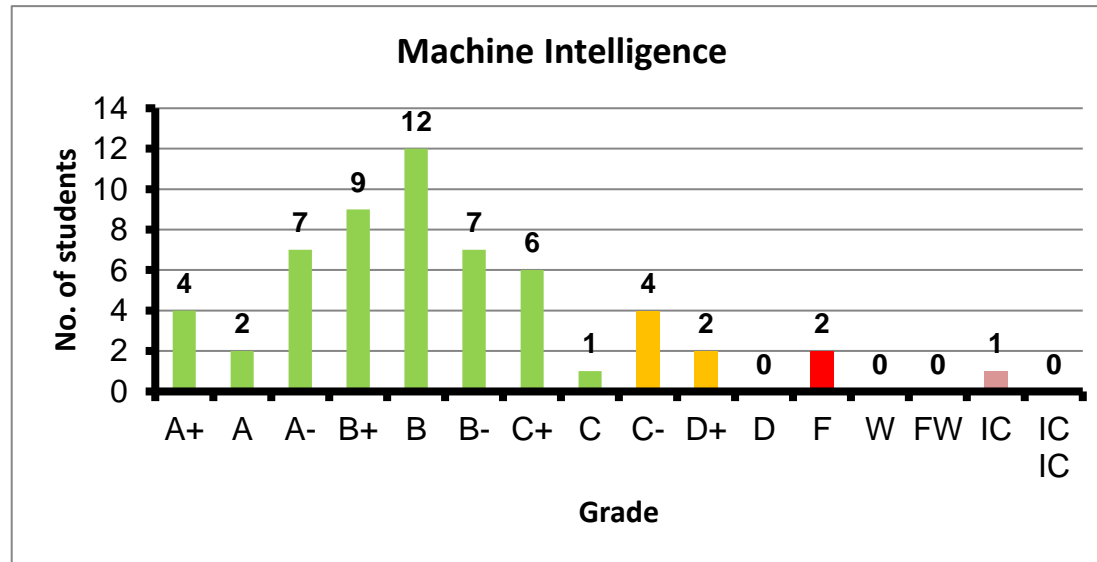
Course: Operating Systems
 Programs: CCE-C
 Code: CMPN303
 Student: 71
 A+ to C: 94%
 C- to D: 4%
 F: 1
 W: 0
 Average: 3.29
 Std Dev: 3.39



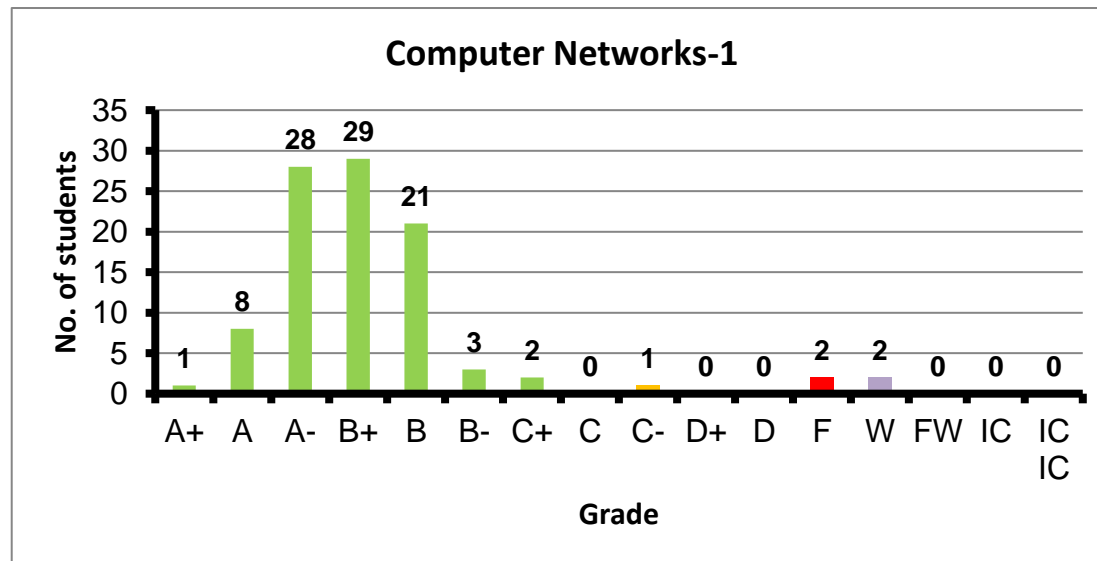
Course: Advanced Database Systems
 Programs: CCE-C
 Code: CMPN401
 Student: 54
 A+ to C: 94%
 C- to D: 4%
 F: 0
 W: 0
 Average: 3.14
 Std Dev: 3.23



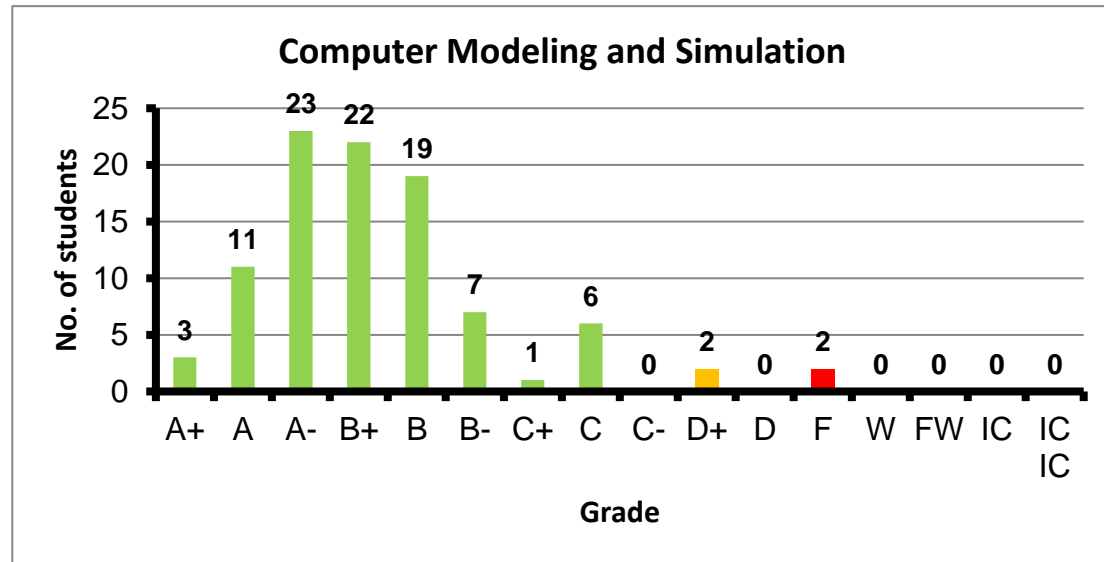
Course: Machine Intelligence
 Programs: CCE-C
 Code: CMPN402
 Student: 57
 A+ to C: 84%
 C- to D: 11%
 F: 2
 W: 0
 Average: 2.86
 Std Dev: 3.01



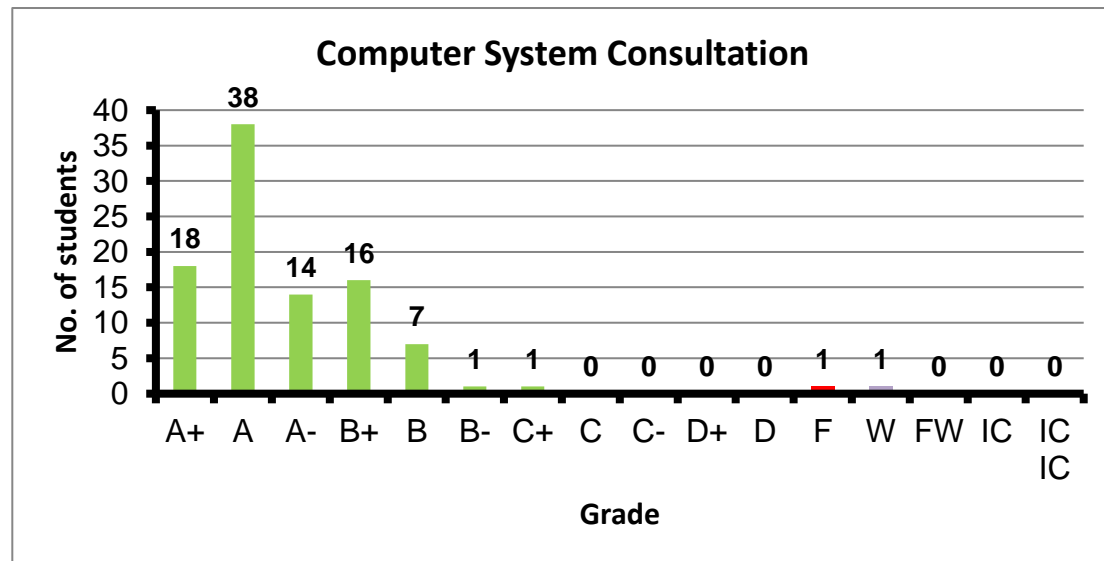
Course: Computer Networks-1
 Programs: CCE-C
 Code: CMPN405
 Student: 97
 A+ to C: 95%
 C- to D: 1%
 F: 2
 W: 2
 Average: 3.29
 Std Dev: 3.35



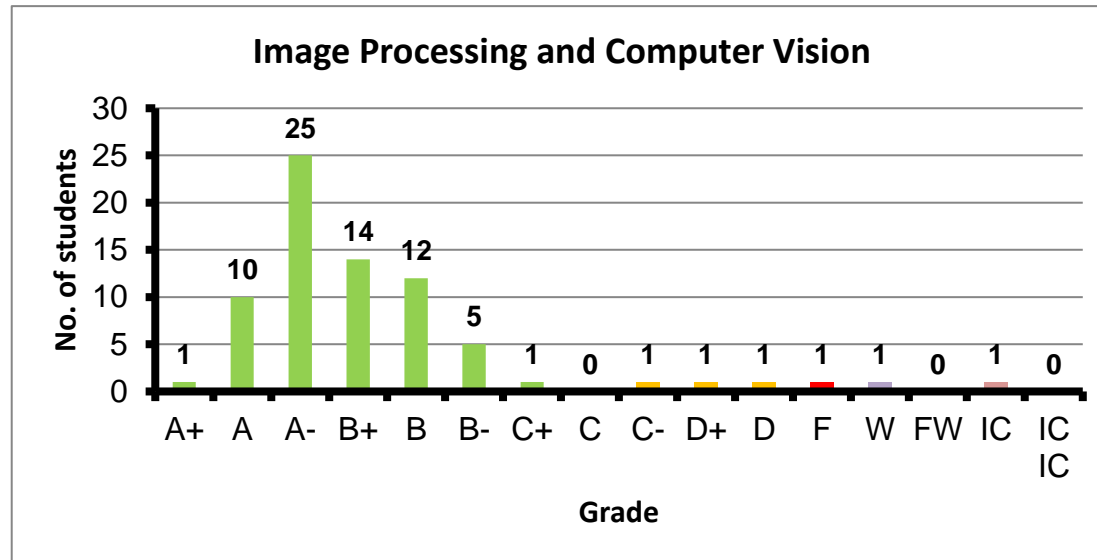
Course: Computer Modeling and Simulation
 Programs: CCE-C
 Code: CMPN407
 Student: 96
 A+ to C: 96%
 C- to D: 2%
 F: 2
 W: 0
 Average: 3.19
 Std Dev: 3.30



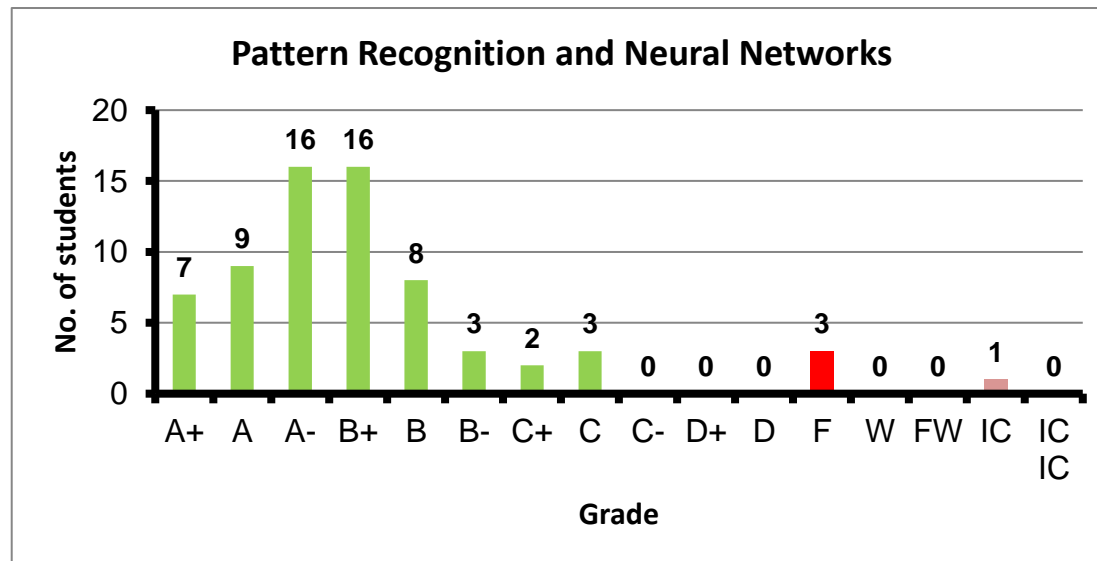
Course: Computer System Consultation
 Programs: CCE-C
 Code: CMPN425
 Student: 97
 A+ to C: 98%
 C- to D: 0%
 F: 1
 W: 1
 Average: 3.69
 Std Dev: 3.74



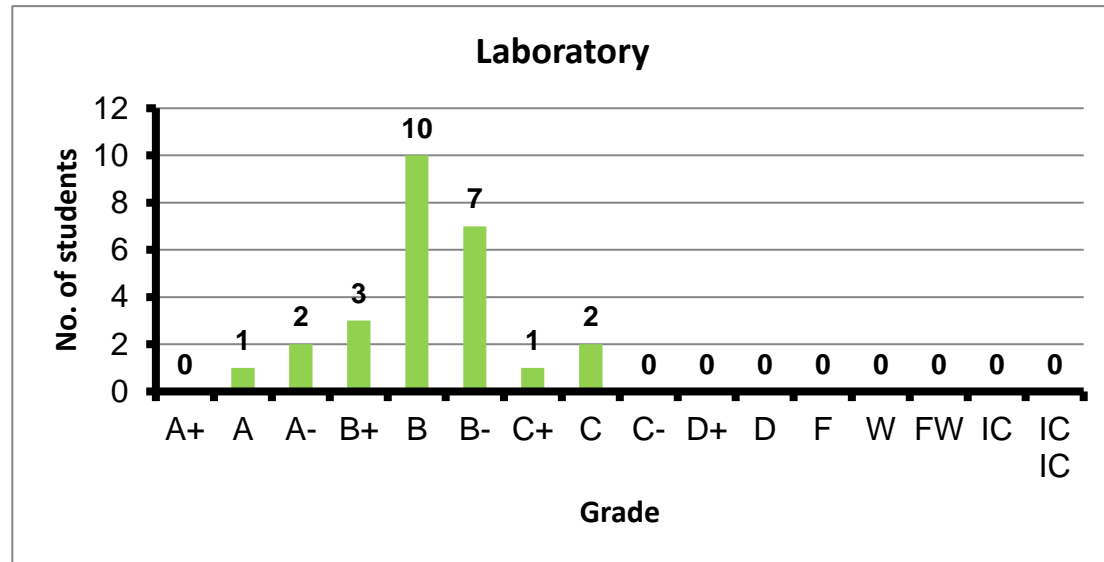
Course: Image Processing and Computer Vision
 Programs: CCE-C
 Code: CMPN446
 Student: 74
 A+ to C: 92%
 C- to D: 4%
 F: 1
 W: 1
 Average: 3.31
 Std Dev: 3.40



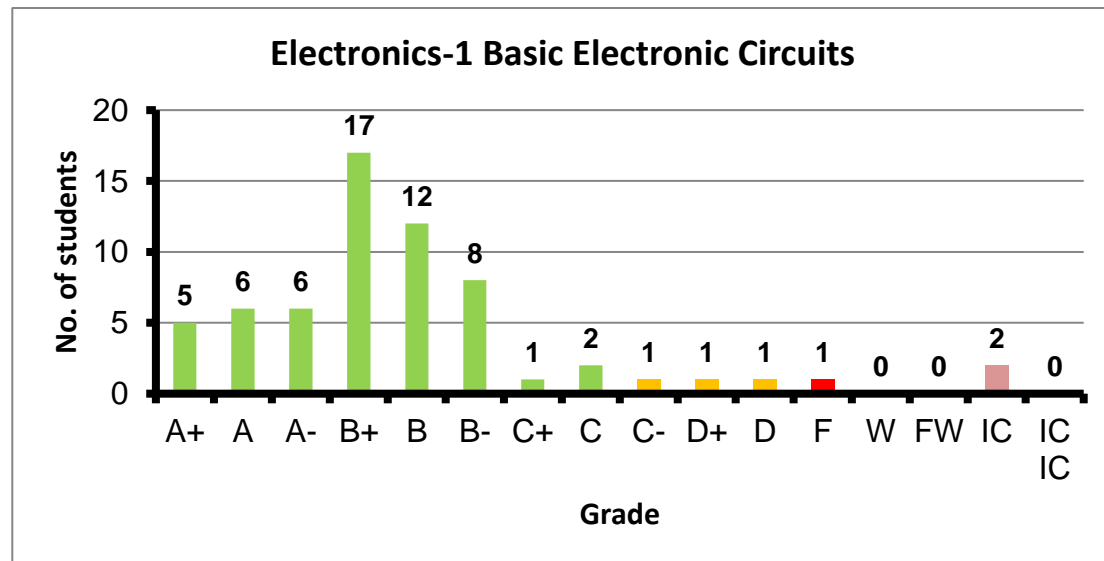
Course: Pattern Recognition and Neural Networks
 Programs: CCE-C
 Code: CMPN450
 Student: 68
 A+ to C: 94%
 C- to D: 0%
 F: 3
 W: 0
 Average: 3.26
 Std Dev: 3.41



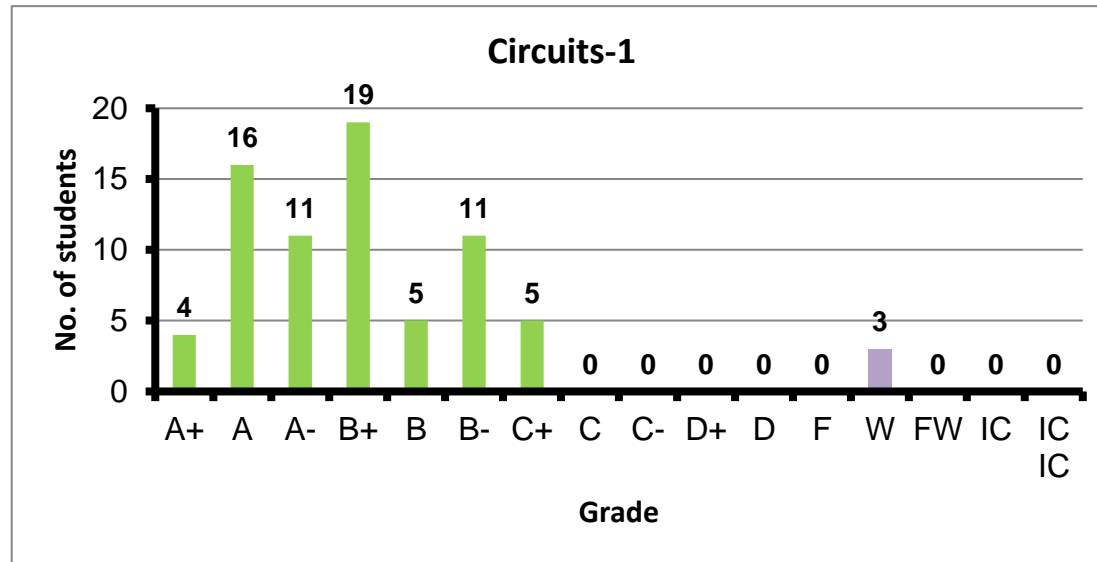
Course: Laboratory
 Programs: CCE-E
 Code: ELCN100
 Student: 26
 A+ to C: 100%
 C- to D: 0%
 F: 0
 W: 0
 Average: 2.94
 Std Dev: 3.04



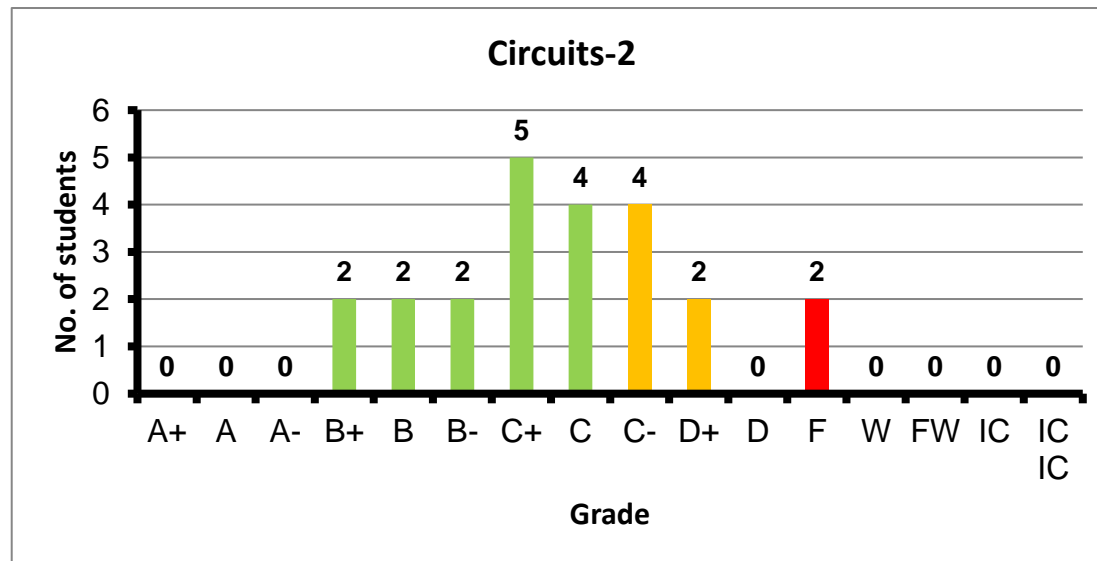
Course: Electronics-1 Basic Electronic Circuits
 Programs: CCE-E
 Code: ELCN101
 Student: 63
 A+ to C: 90%
 C- to D: 5%
 F: 1
 W: 0
 Average: 3.12
 Std Dev: 3.24



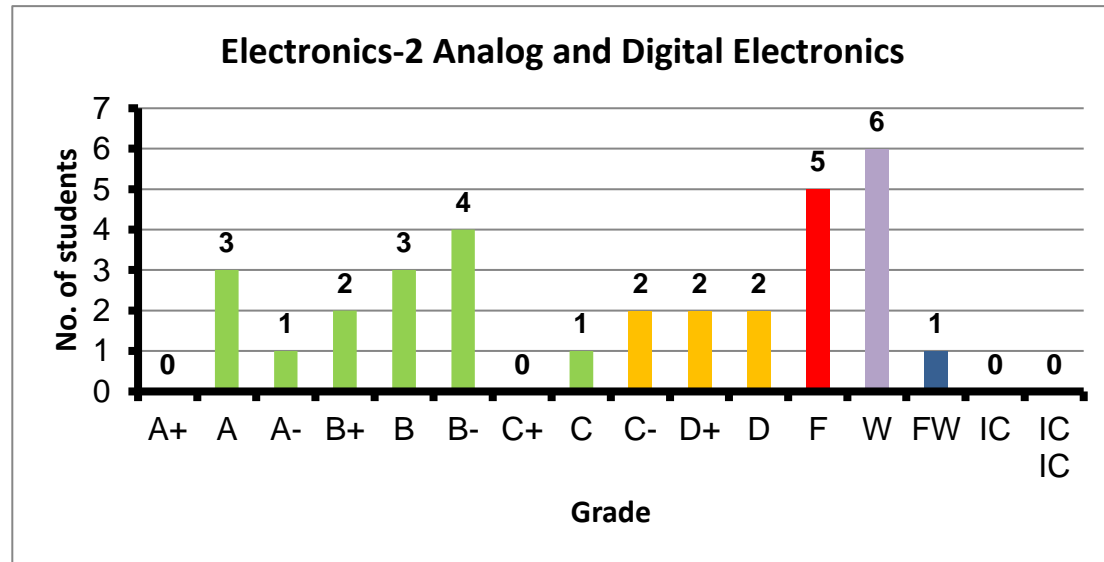
Course: Circuits-1
 Programs: CCE-E
 Code: ELCN102
 Student: 74
 A+ to C: 96%
 C- to D: 0%
 F: 0
 W: 3
 Average: 3.37
 Std Dev: 3.40



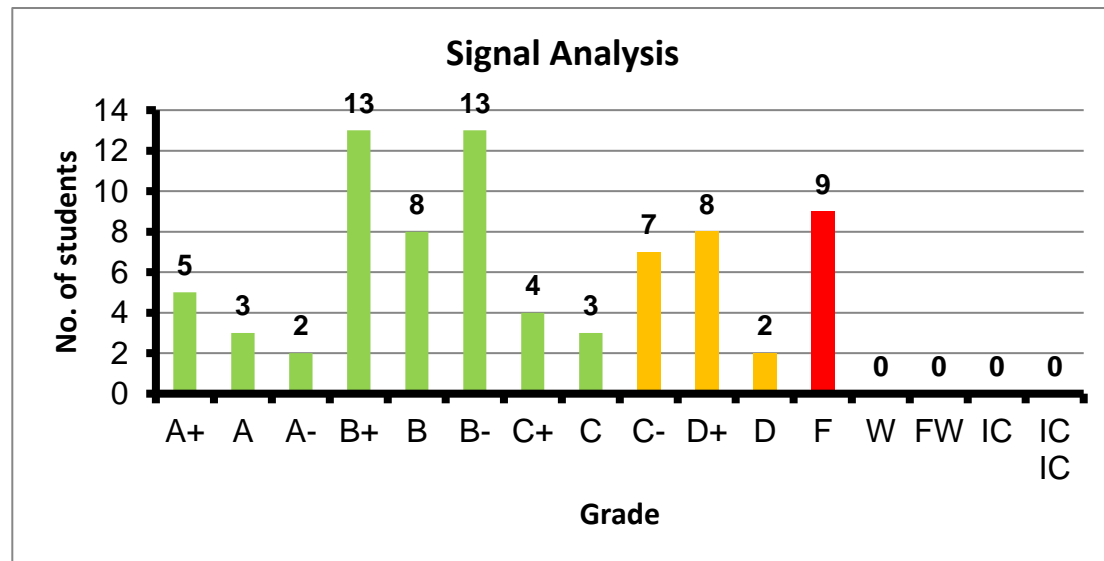
Course: Circuits-2
 Programs: CCE-E
 Code: ELCN112
 Student: 23
 A+ to C: 65%
 C- to D: 26%
 F: 2
 W: 0
 Average: 2.05
 Std Dev: 2.25



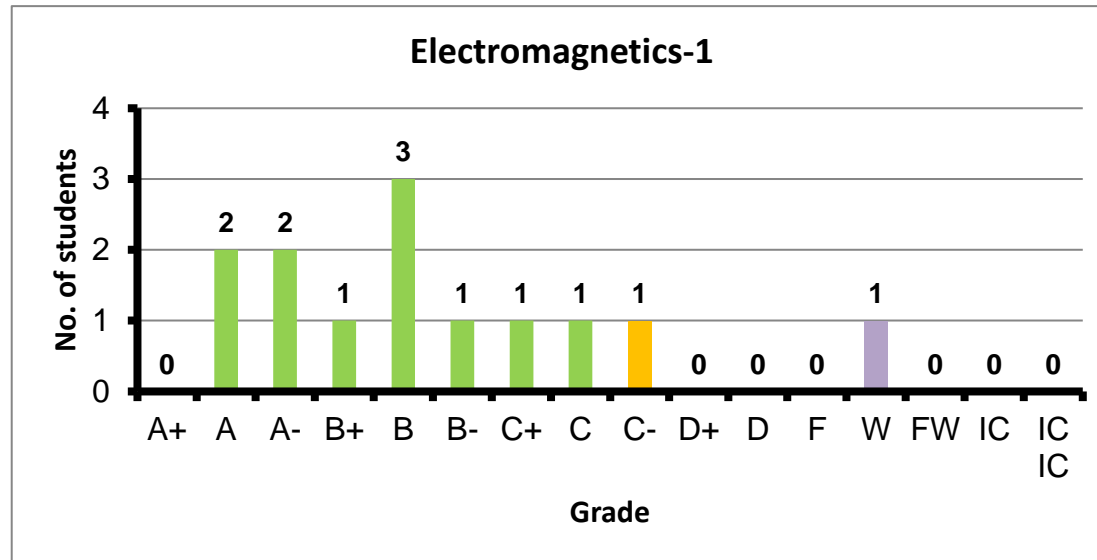
Course: Electronics-2 Analog and Digital Electronics
 Programs: CCE-E
 Code: ELCN201
 Student: 32
 A+ to C: 44%
 C- to D: 19%
 F: 5
 W: 6
 Average: 2.09
 Std Dev: 2.38



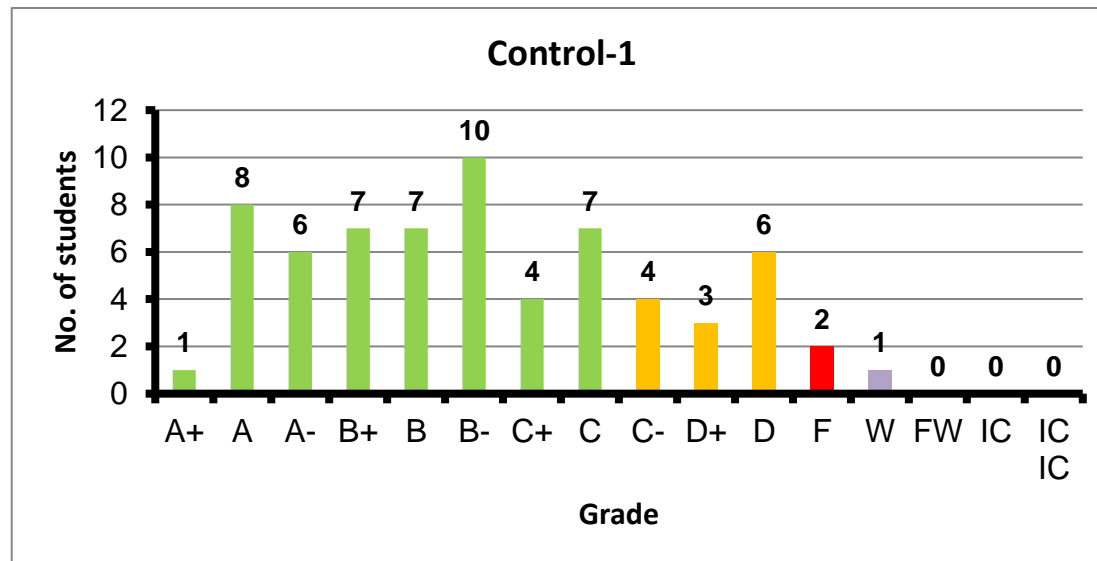
Course: Signal Analysis
 Programs: CCE-E
 Code: ELCN203
 Student: 77
 A+ to C: 66%
 C- to D: 22%
 F: 9
 W: 0
 Average: 2.36
 Std Dev: 2.65



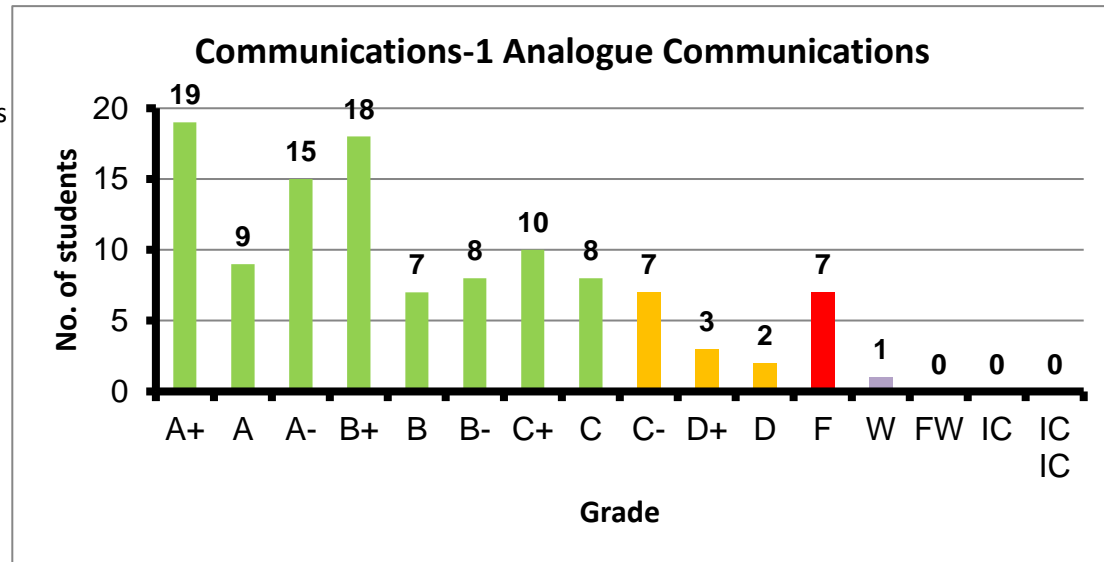
Course: Electromagnetics-1
 Programs: CCE-E
 Code: ELCN205
 Student: 13
 A+ to C: 85%
 C- to D: 8%
 F: 0
 W: 1
 Average: 3.03
 Std Dev: 3.18



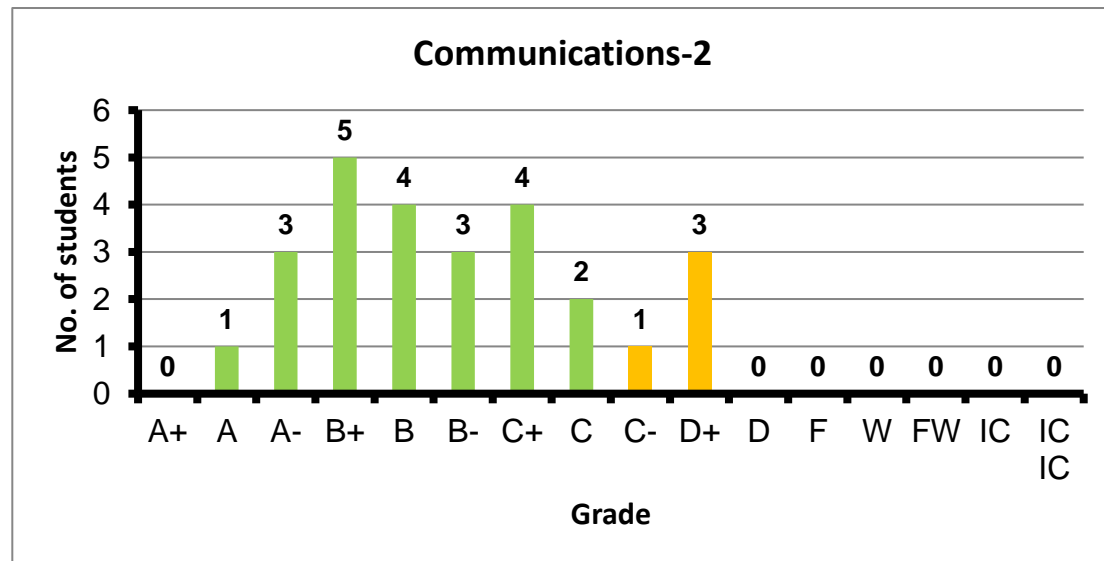
Course: Control-1
 Programs: CCE-E
 Code: ELCN304
 Student: 66
 A+ to C: 76%
 C- to D: 20%
 F: 2
 W: 1
 Average: 2.61
 Std Dev: 2.81



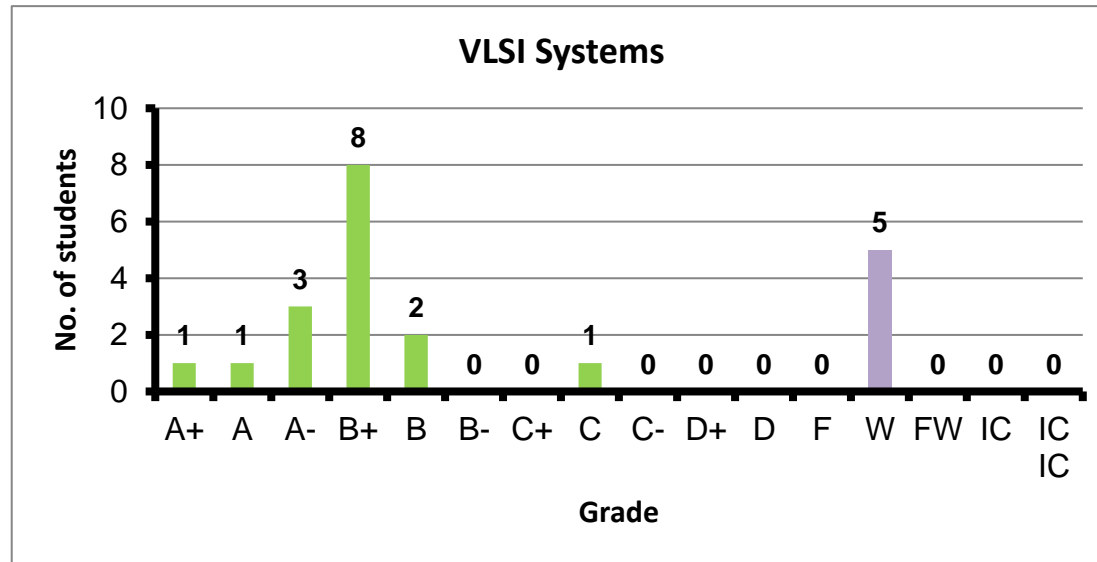
Course: Communications-1 Analogue Communications
 Programs: CCE-E
 Code: ELCN306
 Student: 114
 A+ to C: 82%
 C- to D: 11%
 F: 7
 W: 1
 Average: 2.89
 Std Dev: 3.10



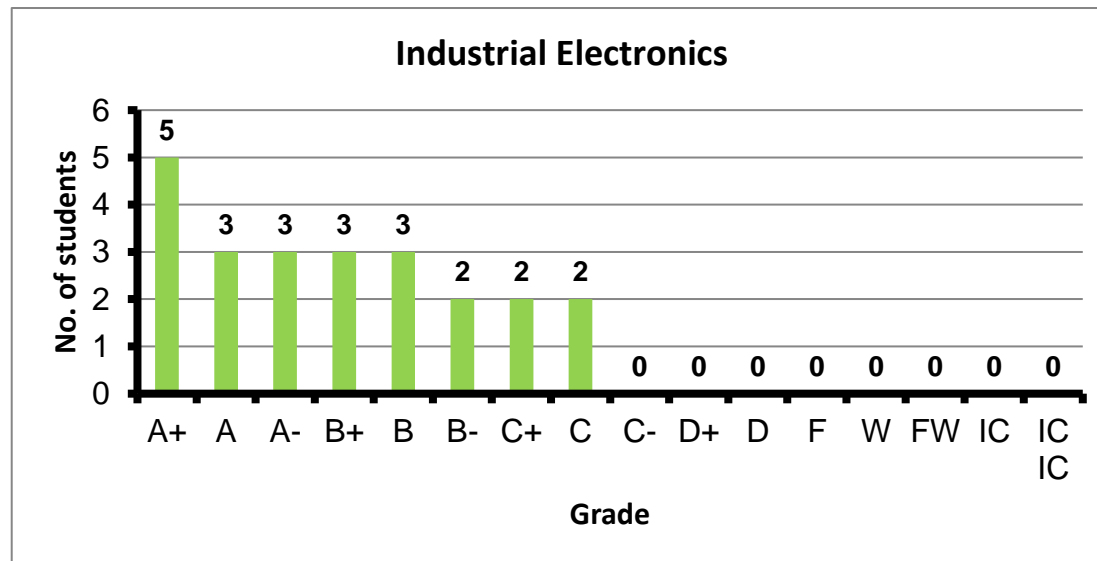
Course: Communications-2
 Programs: CCE-E
 Code: ELCN316
 Student: 26
 A+ to C: 85%
 C- to D: 15%
 F: 0
 W: 0
 Average: 2.72
 Std Dev: 2.87



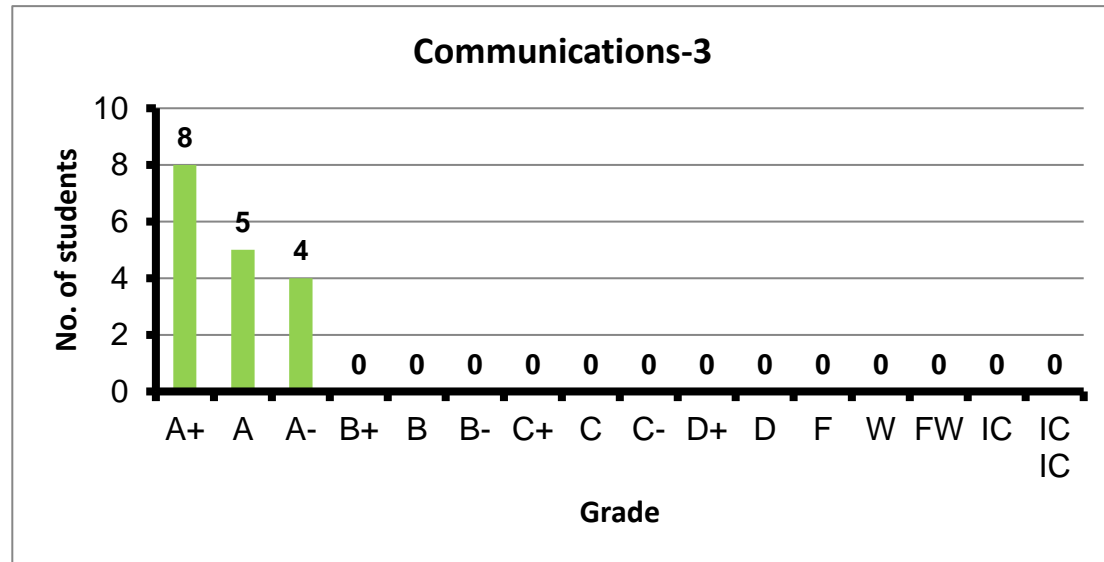
Course: VLSI Systems
 Programs: CCE-E
 Code: ELCN321
 Student: 21
 A+ to C: 76%
 C- to D: 0%
 F: 0
 W: 5
 Average: 3.34
 Std Dev: 3.24



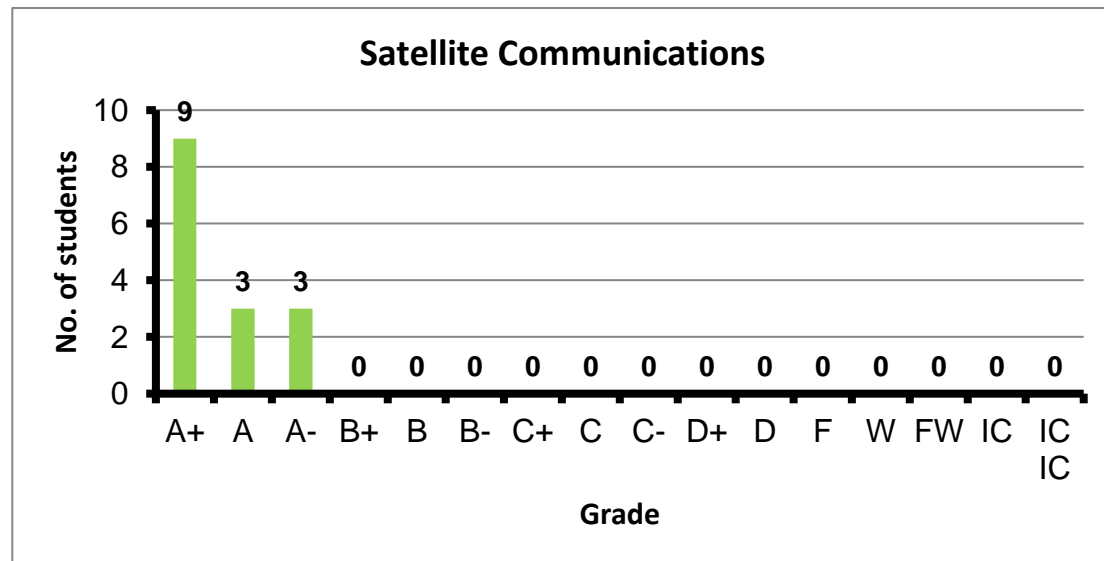
Course: Industrial Electronics
 Programs: CCE-E
 Code: ELCN351
 Student: 23
 A+ to C: 100%
 C- to D: 0%
 F: 0
 W: 0
 Average: 3.30
 Std Dev: 3.45



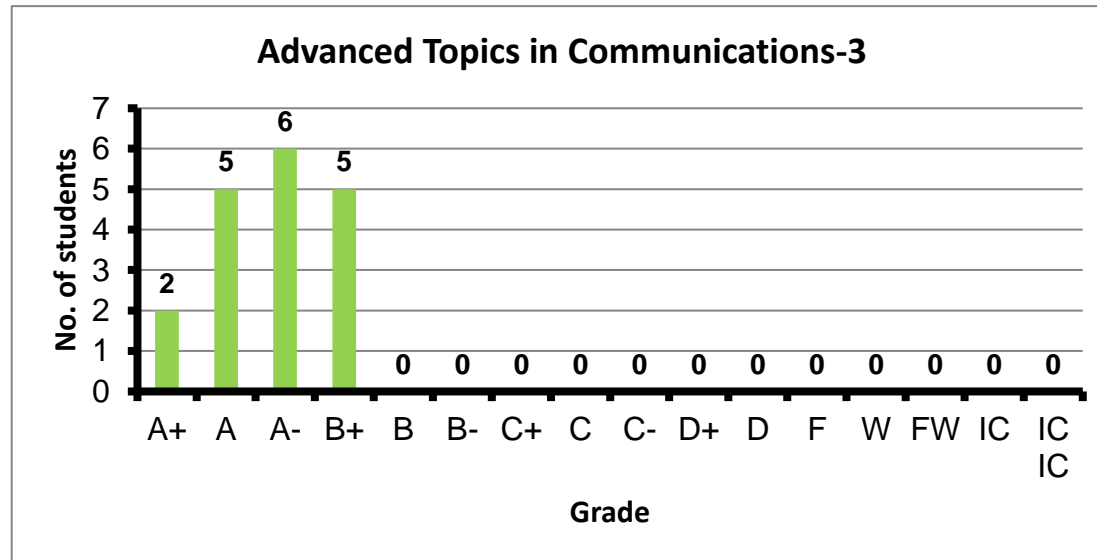
Course: Communications-3
 Programs: CCE-E
 Code: ELCN406
 Student: 17
 A+ to C: 100%
 C- to D: 0%
 F: 0
 W: 0
 Average: 3.93
 Std Dev: 4.05



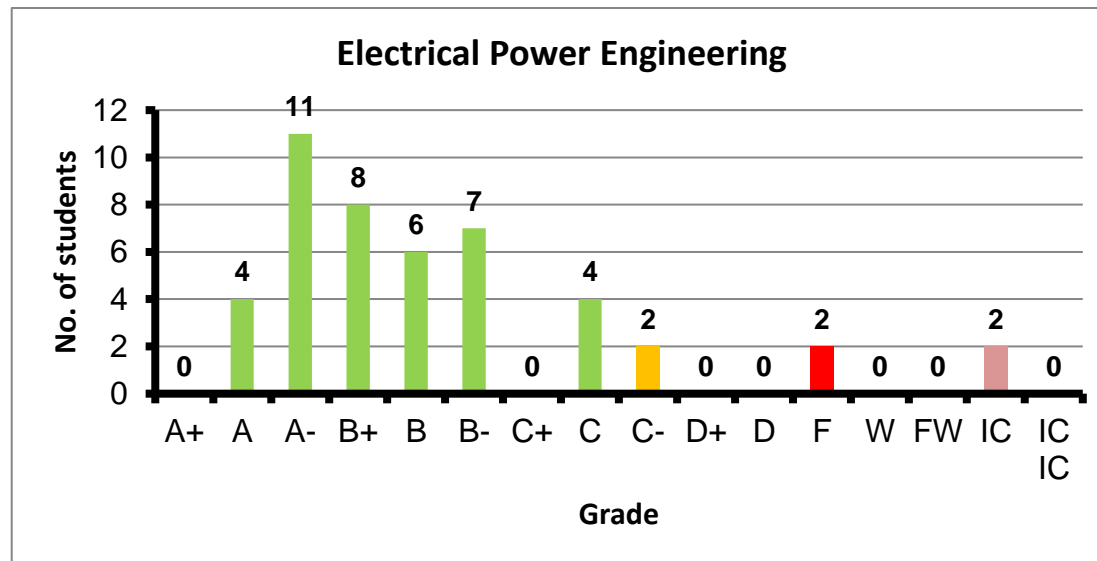
Course: Satellite Communications
 Programs: CCE-E
 Code: ELCN466
 Student: 15
 A+ to C: 100%
 C- to D: 0%
 F: 0
 W: 0
 Average: 3.94
 Std Dev: 4.08



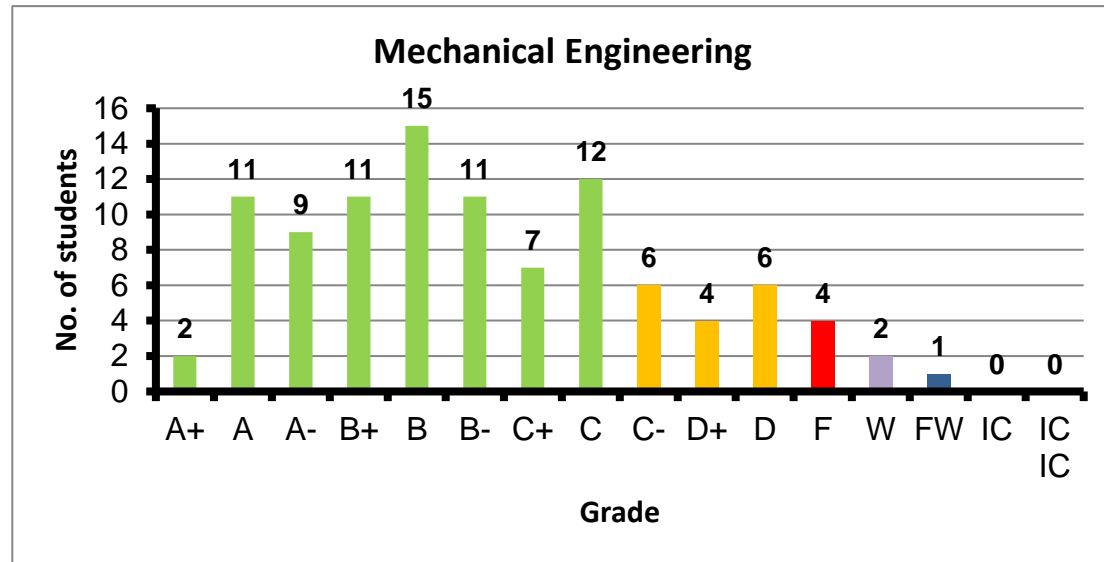
Course: Advanced Topics in Communications-3
 Programs: CCE-E
 Code: ELCN476
 Student: 18
 A+ to C: 100%
 C- to D: 0%
 F: 0
 W: 0
 Average: 3.71
 Std Dev: 3.82



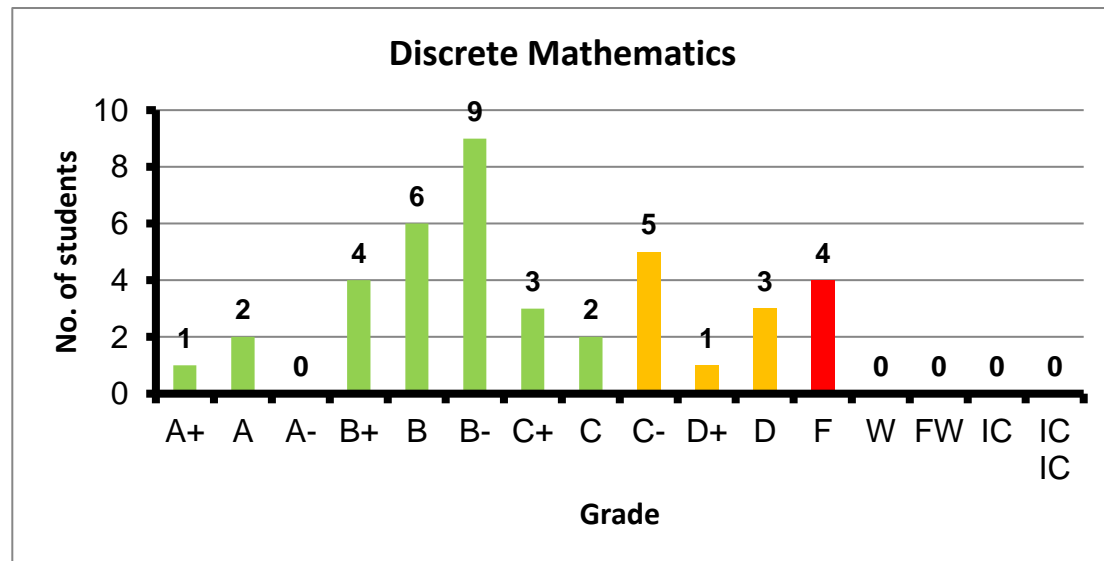
Course: Electrical Power Engineering
 Programs: CCE-E
 Code: EPMN125
 Student: 46
 A+ to C: 87%
 C- to D: 4%
 F: 2
 W: 0
 Average: 2.99
 Std Dev: 3.16



Course: Mechanical Engineering
 Programs: CCE
 Code: INTN125
 Student: 101
 A+ to C: 77%
 C- to D: 16%
 F: 4
 W: 2
 Average: 2.63
 Std Dev: 2.82



Course: Discrete Mathematics
 Programs: CCE
 Code: MTHN104
 Student: 40
 A+ to C: 68%
 C- to D: 23%
 F: 4
 W: 0
 Average: 2.28
 Std Dev: 2.55



Course: Modern Physics
Programs: CCE-E
Code: PHYN102
Student: 127
A+ to C: 72%
C- to D: 23%
F: 3
W: 3
Average: 2.63
Std Dev: 2.81

