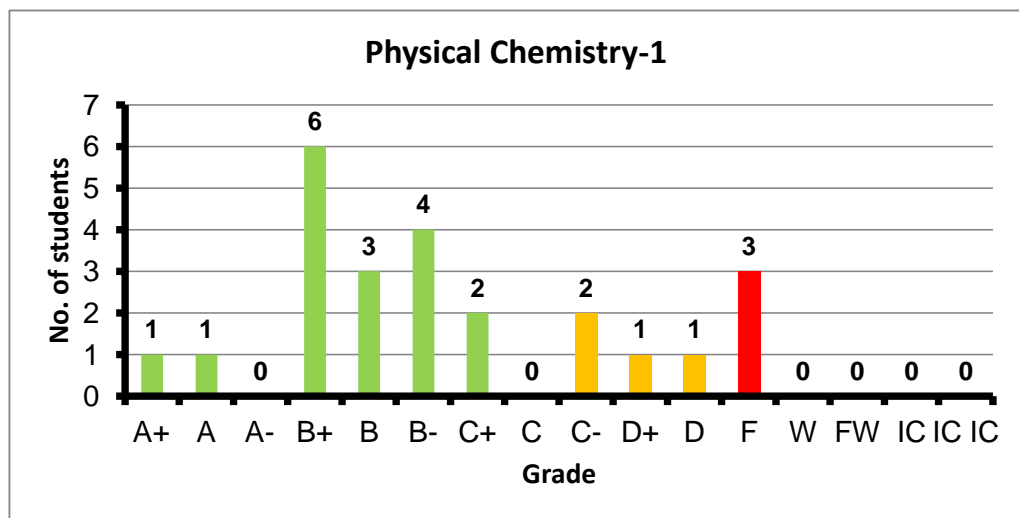
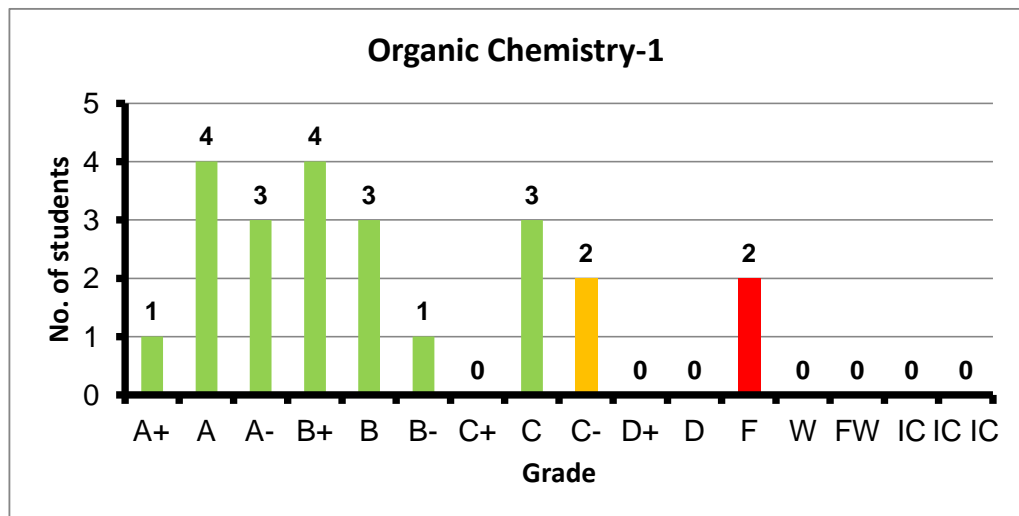


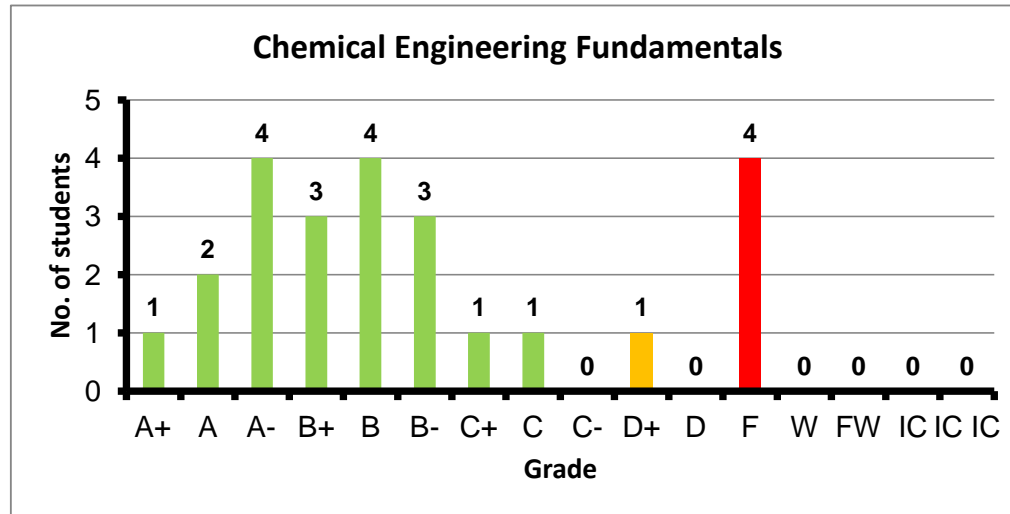
Course: Physical Chemistry-1
 Programs: PPC
 Code: CHEN101
 Student: 24
 A+ to C: 71%
 C- to D: 17%
 F: 3
 W: 0
 Average: 2.42
 Std Dev: 2.74



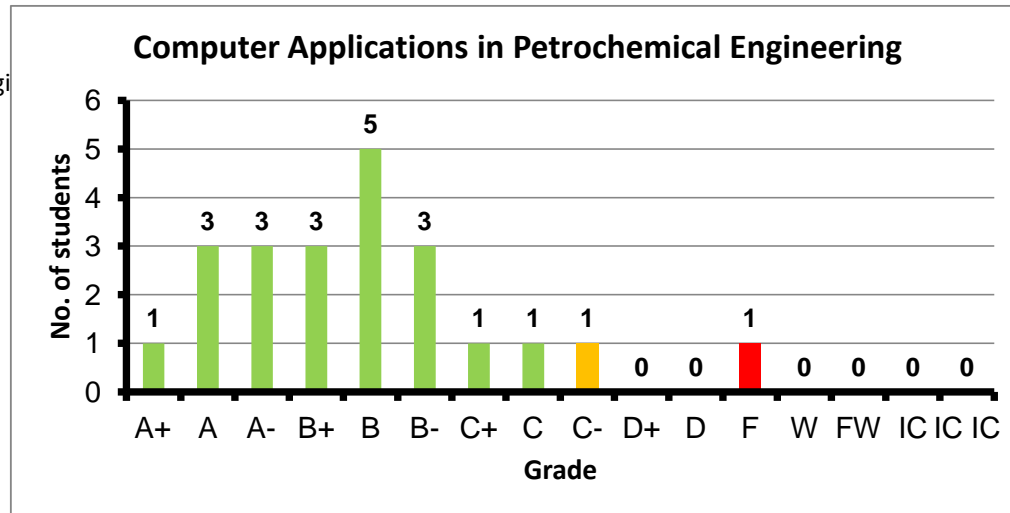
Course: Organic Chemistry-1
 Programs: PPC
 Code: CHEN102
 Student: 23
 A+ to C: 83%
 C- to D: 9%
 F: 2
 W: 0
 Average: 2.84
 Std Dev: 3.14



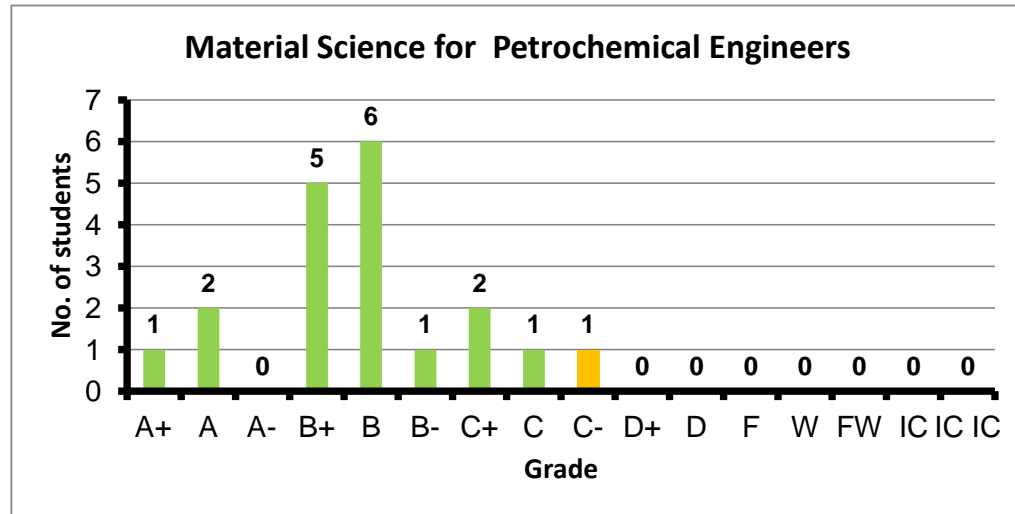
Course: Chemical Engineering Fundamentals
 Programs: PPC
 Code: CHEN103
 Student: 24
 A+ to C: 79%
 C- to D: 4%
 F: 4
 W: 0
 Average: 2.60
 Std Dev: 2.98



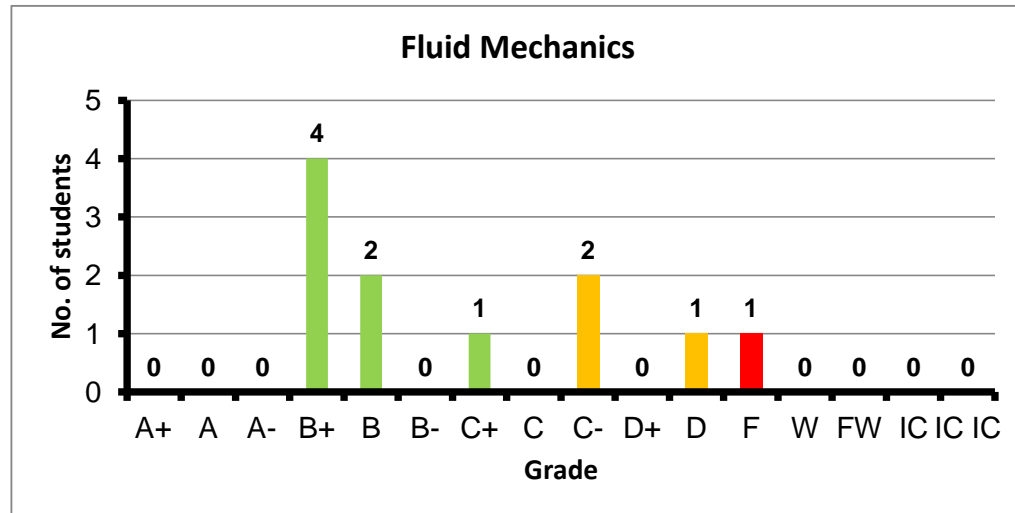
Course: Computer Applications in Petrochemical Engi
 Programs: PPC
 Code: CHEN106
 Student: 22
 A+ to C: 91%
 C- to D: 5%
 F: 1
 W: 0
 Average: 3.00
 Std Dev: 3.21



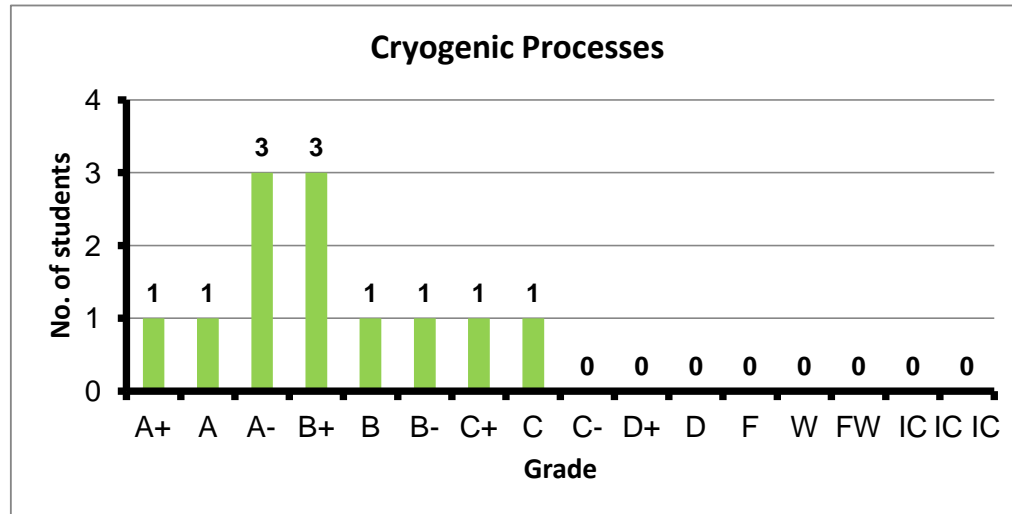
Course: Material Science for Petrochemical Engineers
 Programs: PPC
 Code: CHEN107
 Student: 19
 A+ to C: 95%
 C- to D: 5%
 F: 0
 W: 0
 Average: 3.03
 Std Dev: 3.17



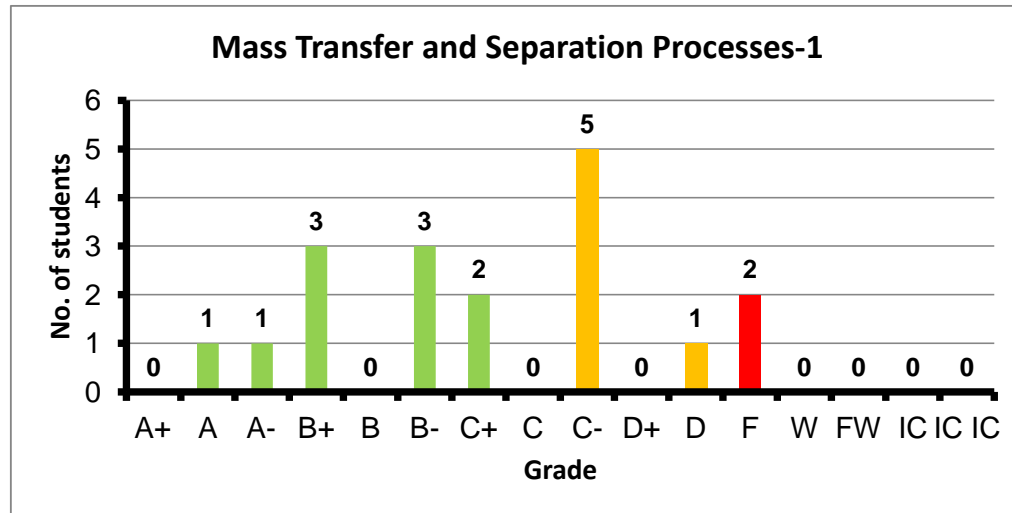
Course: Fluid Mechanics
 Programs: PPC
 Code: CHEN202
 Student: 11
 A+ to C: 64%
 C- to D: 27%
 F: 1
 W: 0
 Average: 2.35
 Std Dev: 2.71



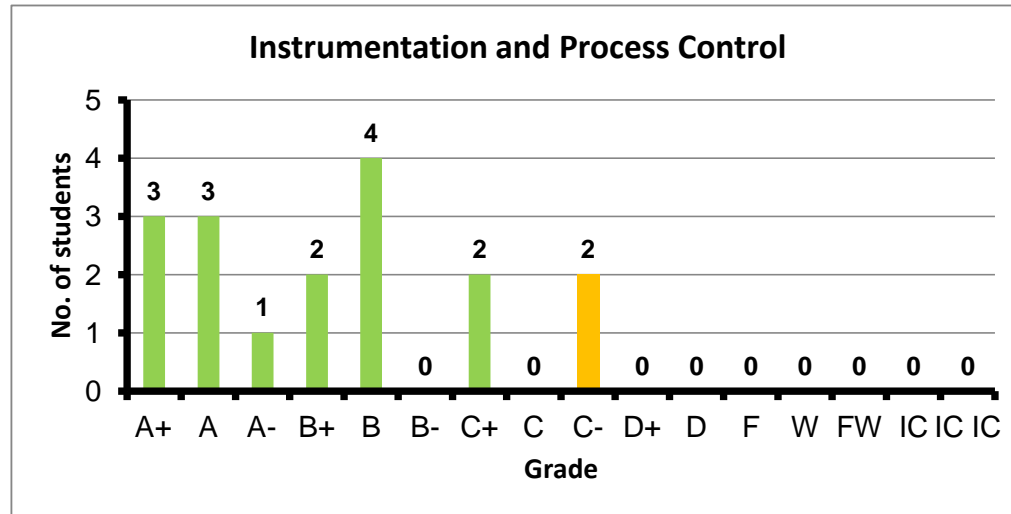
Course: Cryogenic Processes
 Programs: PPC
 Code: CHEN204
 Student: 12
 A+ to C: 100%
 C- to D: 0%
 F: 0
 W: 0
 Average: 3.25
 Std Dev: 3.46



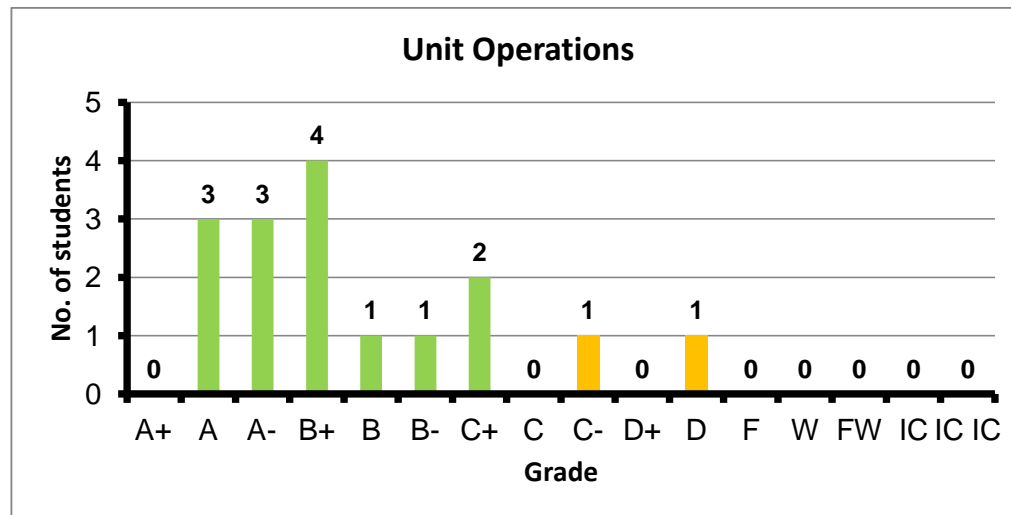
Course: Mass Transfer and Separation Processes-1
 Programs: PPC
 Code: CHEN301
 Student: 18
 A+ to C: 56%
 C- to D: 33%
 F: 2
 W: 0
 Average: 2.21
 Std Dev: 2.55



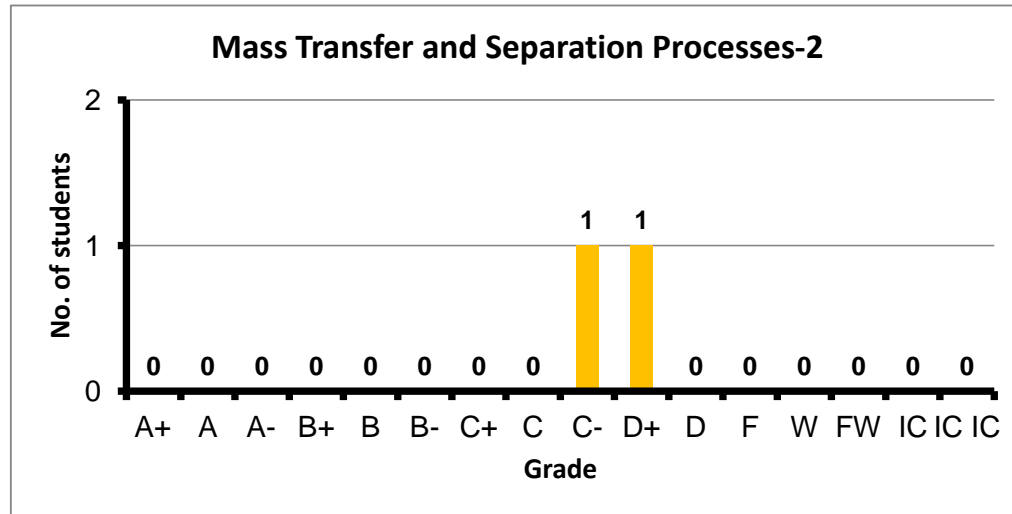
Course: Instrumentation and Process Control
 Programs: PPC
 Code: CHEN302
 Student: 17
 A+ to C: 88%
 C- to D: 12%
 F: 0
 W: 0
 Average: 3.19
 Std Dev: 3.39



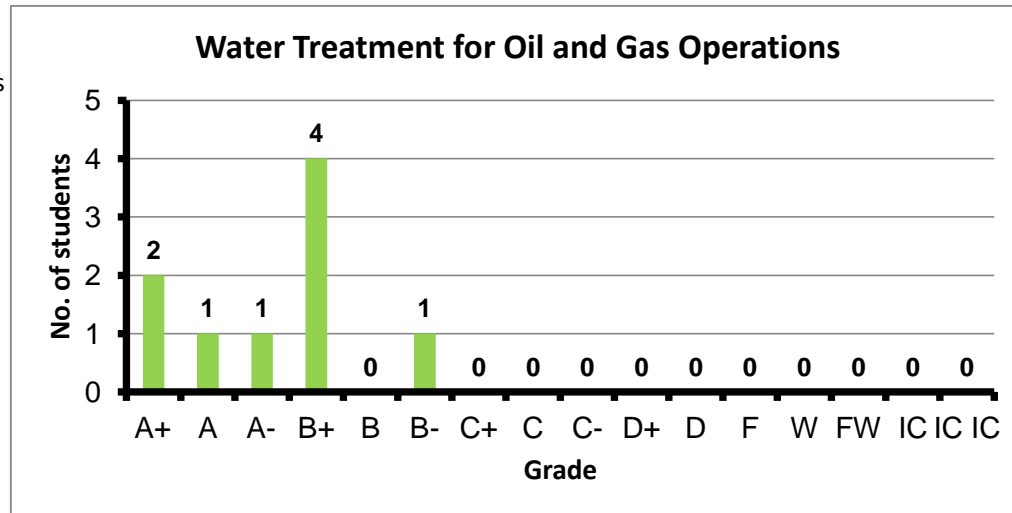
Course: Unit Operations
 Programs: PPC
 Code: CHEN304
 Student: 16
 A+ to C: 88%
 C- to D: 13%
 F: 0
 W: 0
 Average: 3.08
 Std Dev: 3.30



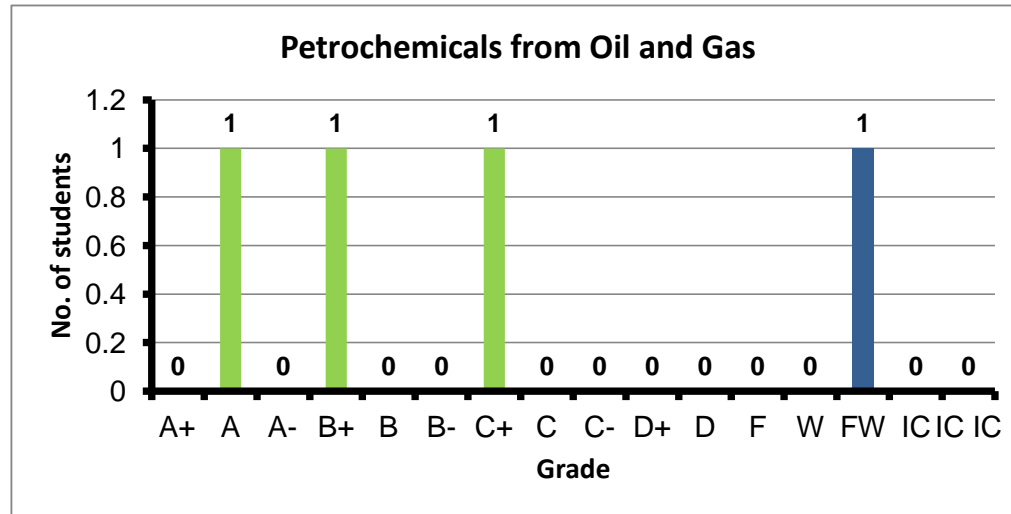
Course: Mass Transfer and Separation Processes-2
 Programs: PPC
 Code: CHEN307
 Student: 2
 A+ to C: 0%
 C- to D: 100%
 F: 0
 W: 0
 Average: 1.55
 Std Dev: 2.14



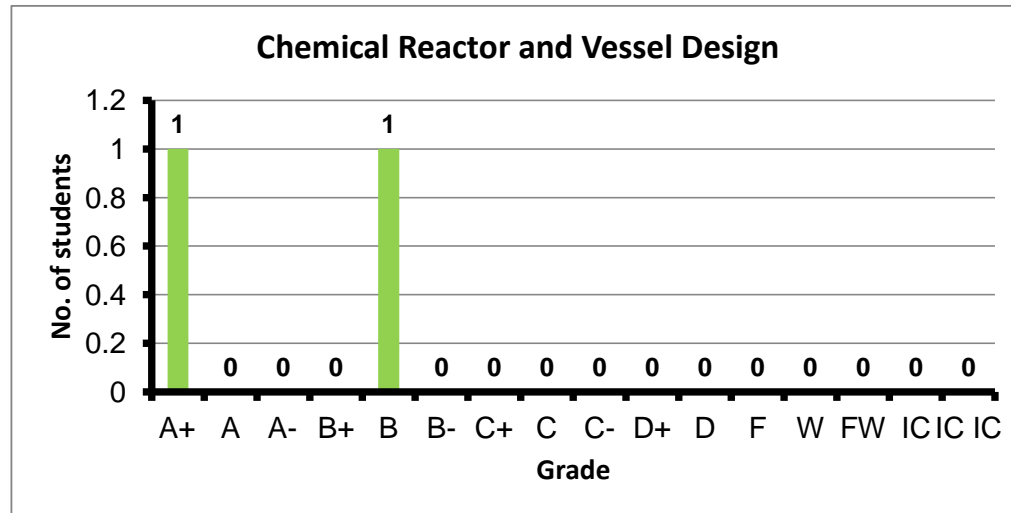
Course: Water Treatment for Oil and Gas Operations
 Programs: PPC
 Code: CHEN310
 Student: 9
 A+ to C: 100%
 C- to D: 0%
 F: 0
 W: 0
 Average: 3.51
 Std Dev: 3.75



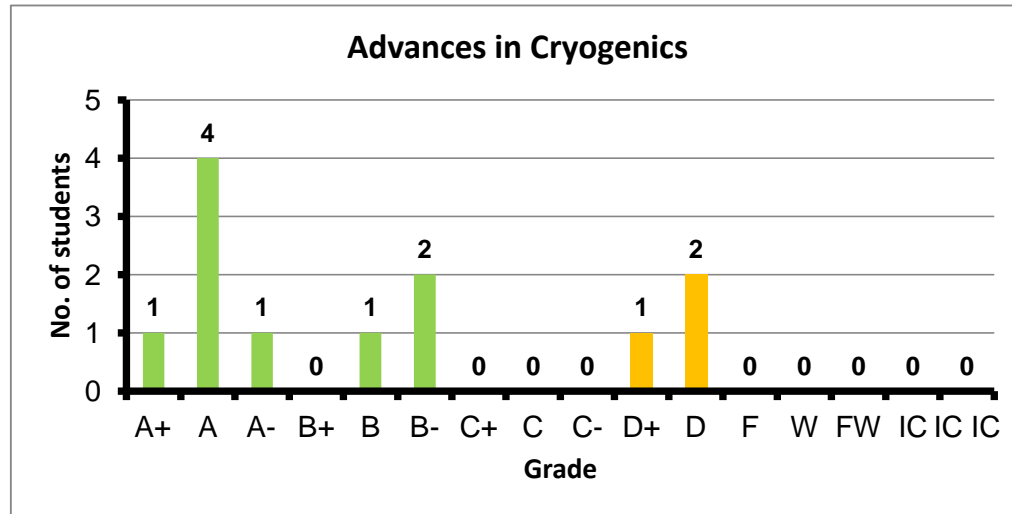
Course: Petrochemicals from Oil and Gas
 Programs: PPC
 Code: CHEN402
 Student: 4
 A+ to C: 75%
 C- to D: 0%
 F: 0
 W: 0
 Average: 3.20
 Std Dev: 4.01



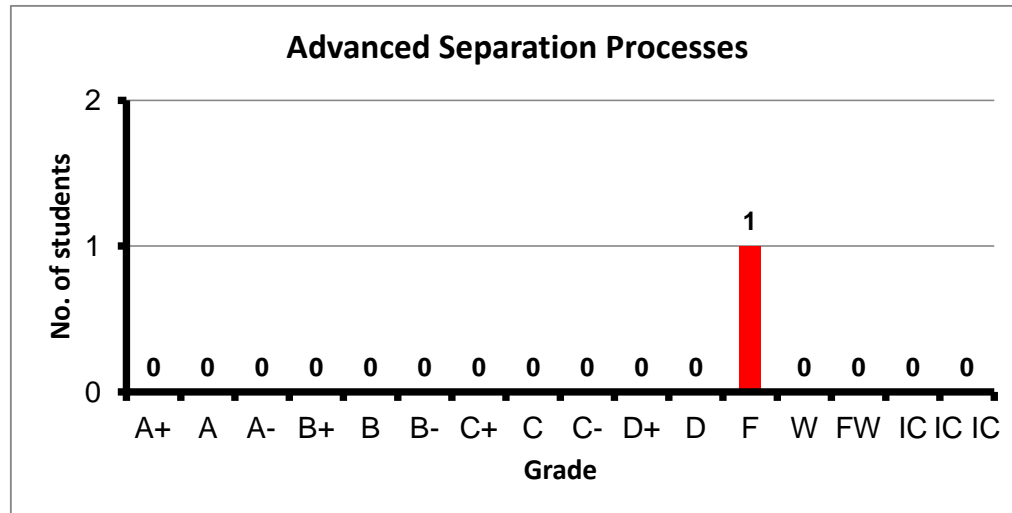
Course: Chemical Reactor and Vessel Design
 Programs: PPC
 Code: CHEN403
 Student: 2
 A+ to C: 100%
 C- to D: 0%
 F: 0
 W: 0
 Average: 3.50
 Std Dev: 5.00



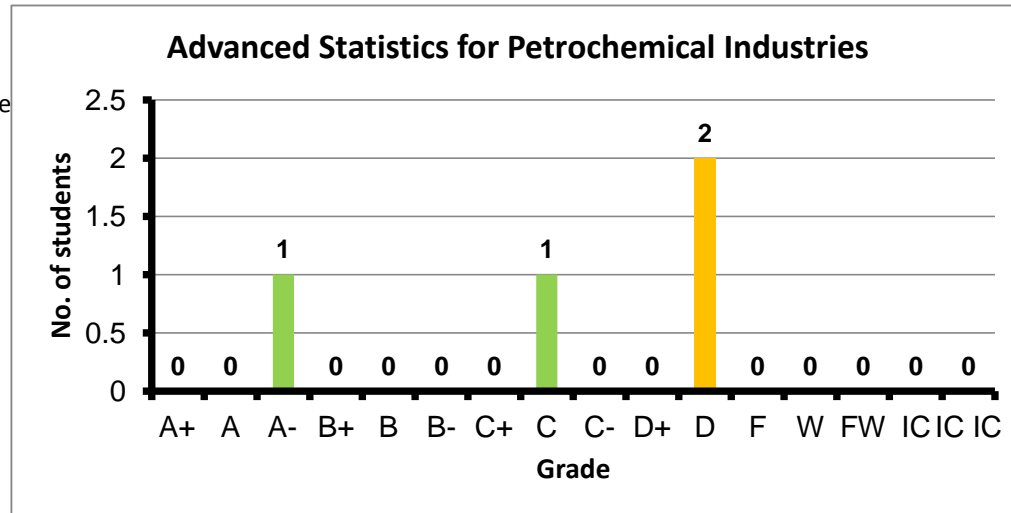
Course: Advances in Cryogenics
 Programs: PPC
 Code: CHEN404
 Student: 12
 A+ to C: 75%
 C- to D: 25%
 F: 0
 W: 0
 Average: 2.96
 Std Dev: 3.32



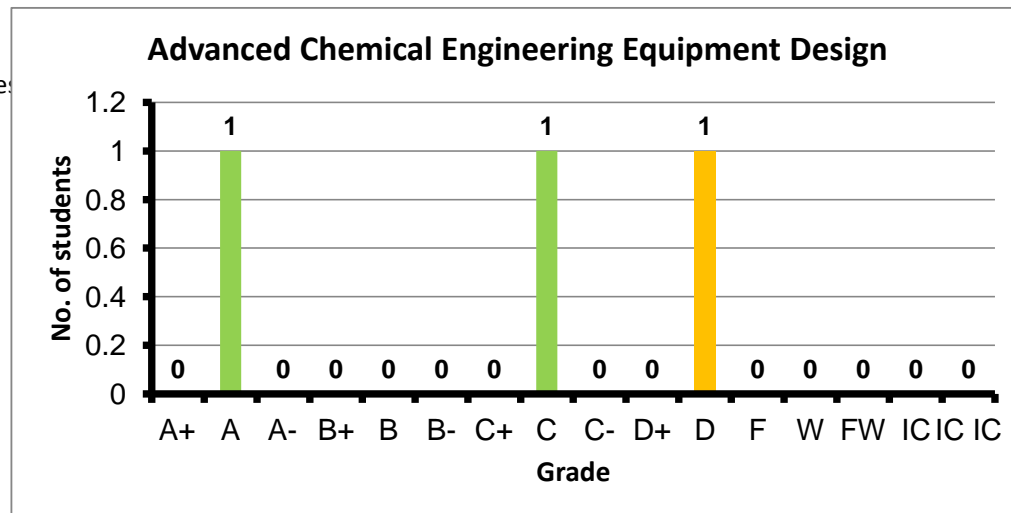
Course: Advanced Separation Processes
 Programs: PPC
 Code: CHEN405
 Student: 1
 A+ to C: 0%
 C- to D: 0%
 F: 1
 W: 0
 Average: 0.00
 Std Dev: #DIV/0!



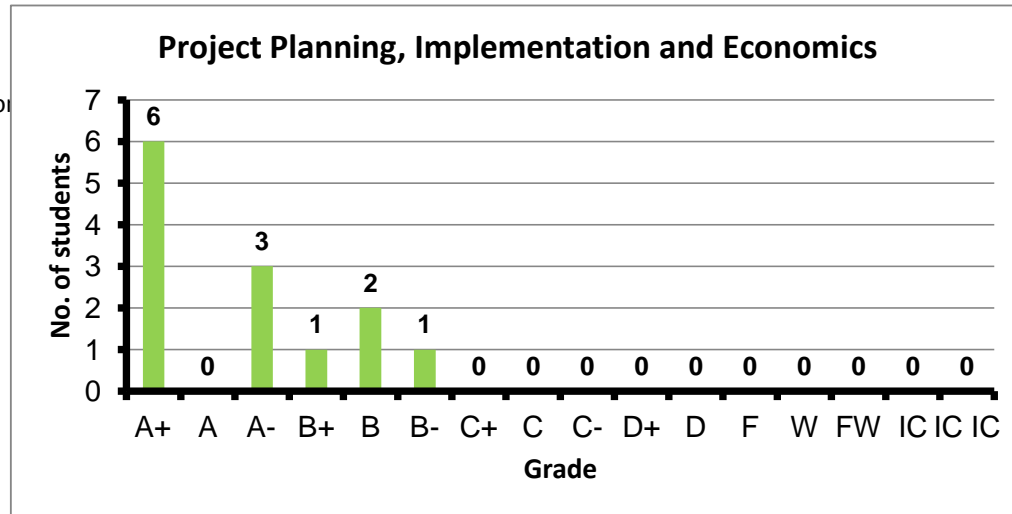
Course: Advanced Statistics for Petrochemical Industries
 Programs: PPC
 Code: CHEN406
 Student: 4
 A+ to C: 50%
 C- to D: 50%
 F: 0
 W: 0
 Average: 1.93
 Std Dev: 2.56



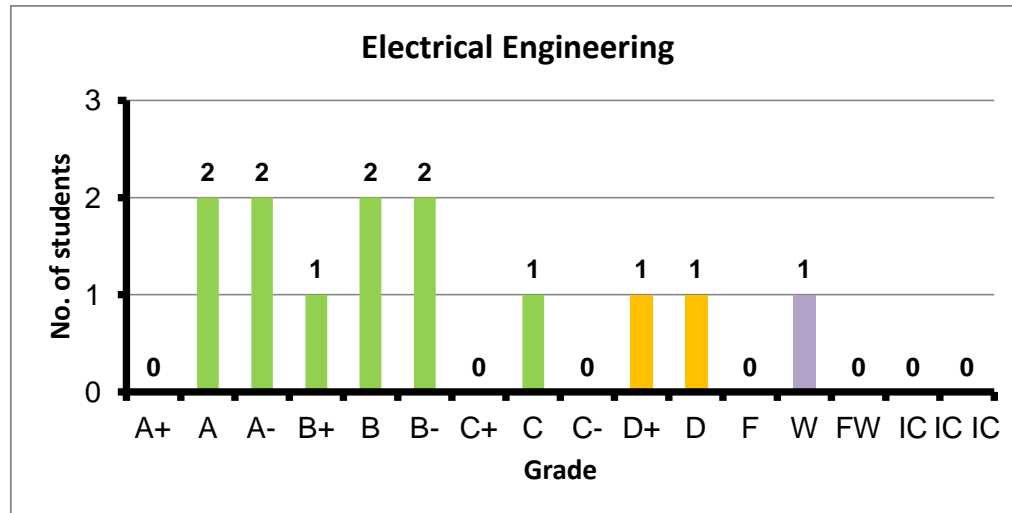
Course: Advanced Chemical Engineering Equipment Design
 Programs: PPC
 Code: CHEN407
 Student: 3
 A+ to C: 67%
 C- to D: 33%
 F: 0
 W: 0
 Average: 2.33
 Std Dev: 3.24



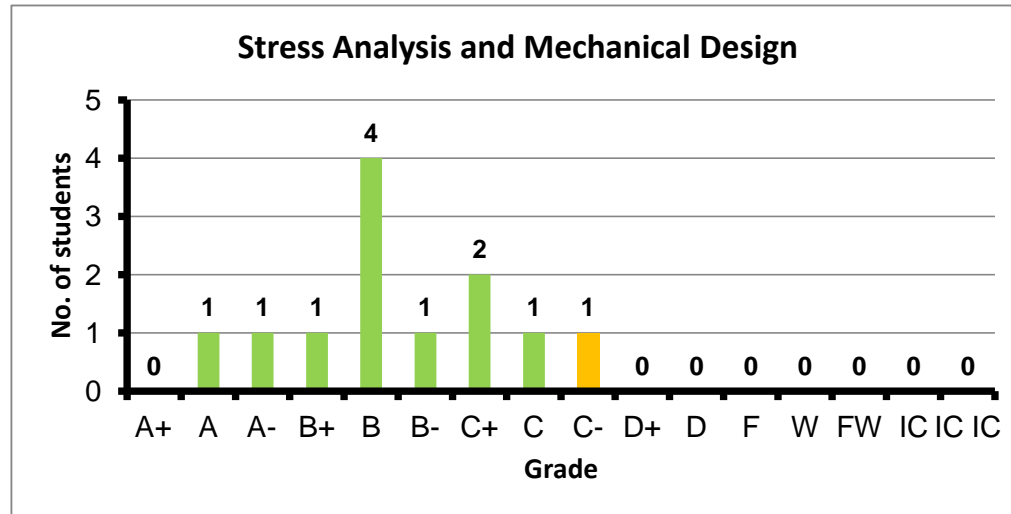
Course: Project Planning, Implementation and Economics
 Programs: PPC
 Code: GENN401
 Student: 13
 A+ to C: 100%
 C- to D: 0%
 F: 0
 W: 0
 Average: 3.62
 Std Dev: 3.80



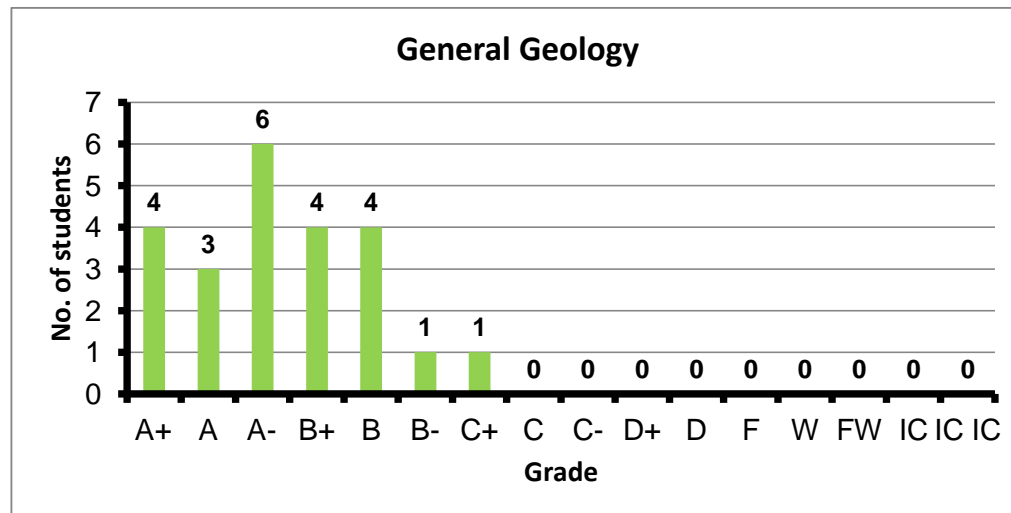
Course: Electrical Engineering
 Programs: PPC
 Code: INTN201
 Student: 13
 A+ to C: 77%
 C- to D: 15%
 F: 0
 W: 1
 Average: 2.88
 Std Dev: 3.08



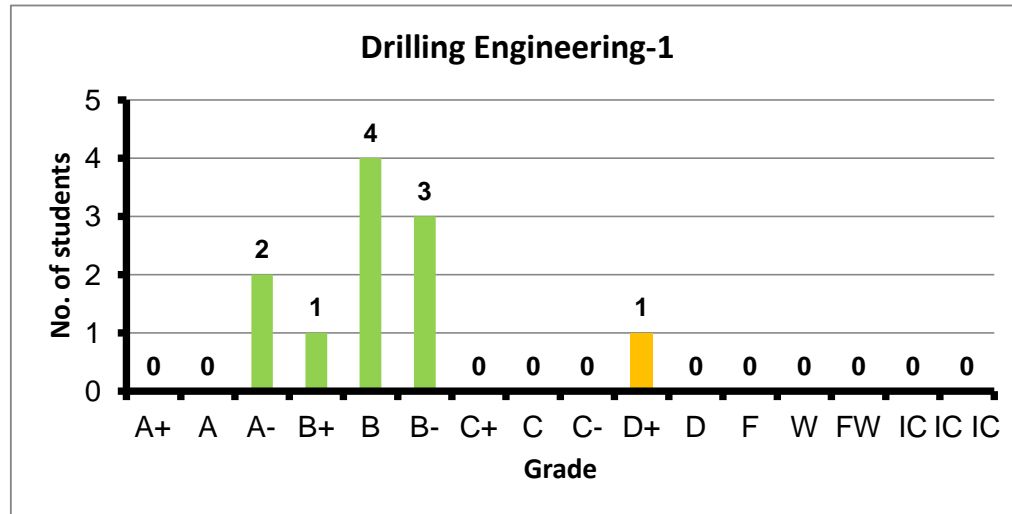
Course: Stress Analysis and Mechanical Design
 Programs: PPC
 Code: MDPN201
 Student: 12
 A+ to C: 92%
 C- to D: 8%
 F: 0
 W: 0
 Average: 2.83
 Std Dev: 3.04



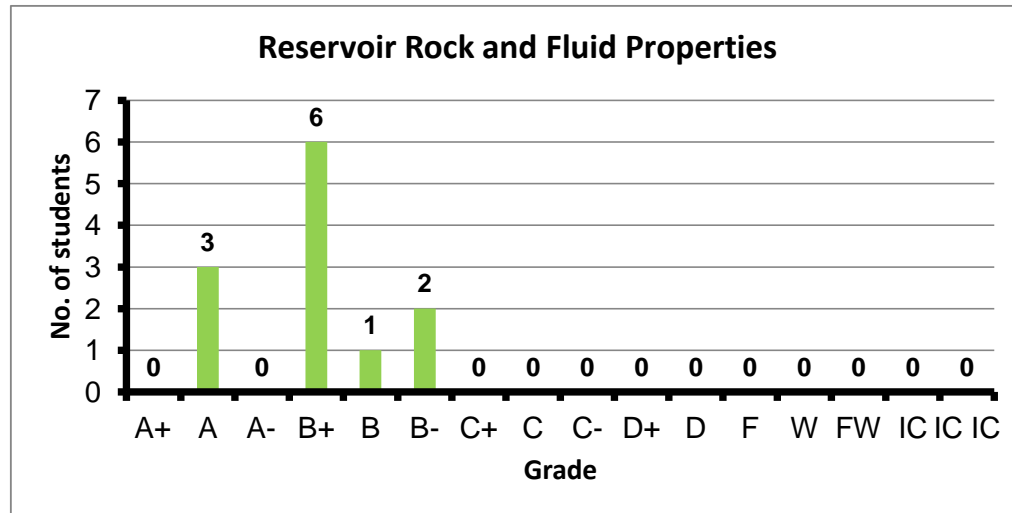
Course: General Geology
 Programs: PPC
 Code: PEN102
 Student: 23
 A+ to C: 100%
 C- to D: 0%
 F: 0
 W: 0
 Average: 3.50
 Std Dev: 3.61



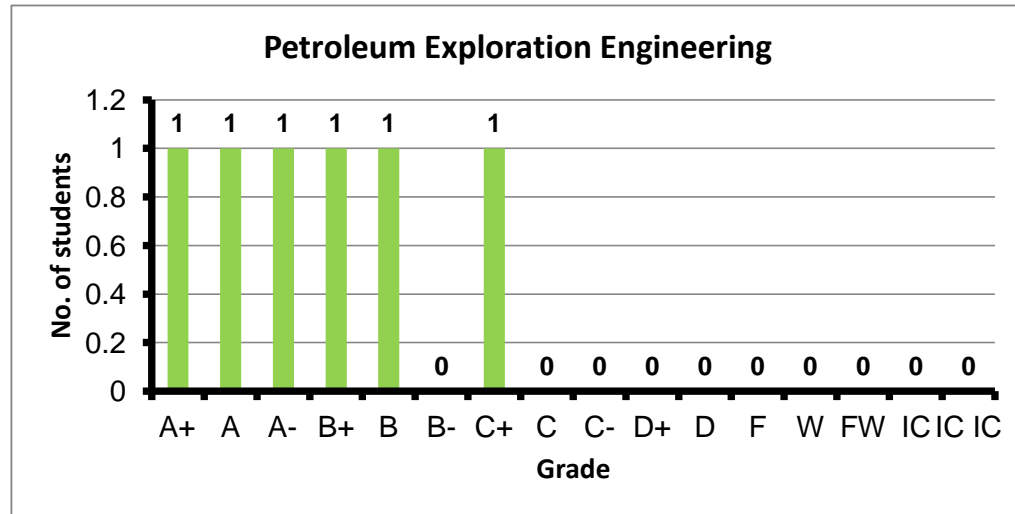
Course: Drilling Engineering-1
 Programs: PPC
 Code: PEN201
 Student: 11
 A+ to C: 91%
 C- to D: 9%
 F: 0
 W: 0
 Average: 2.93
 Std Dev: 3.13



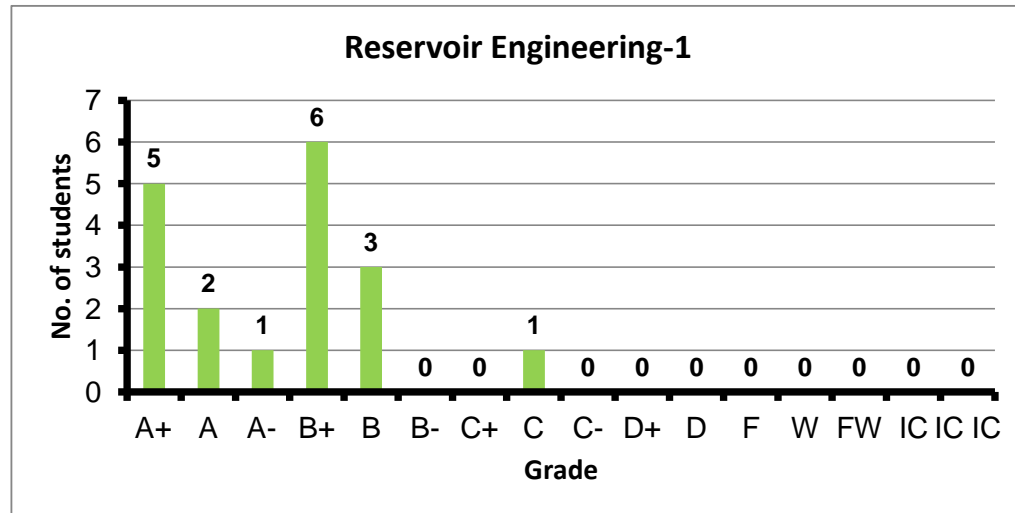
Course: Reservoir Rock and Fluid Properties
 Programs: PPC
 Code: PEN202
 Student: 12
 A+ to C: 100%
 C- to D: 0%
 F: 0
 W: 0
 Average: 3.35
 Std Dev: 3.53



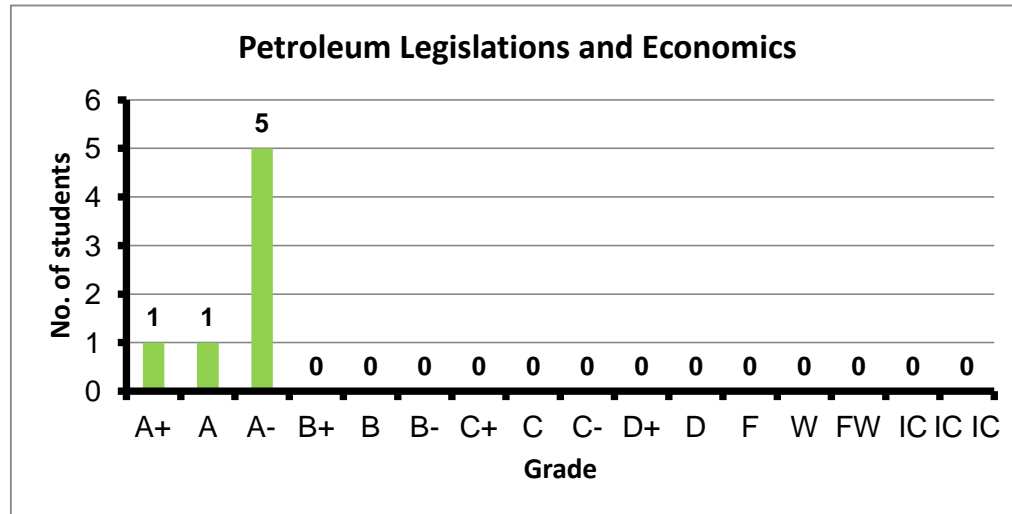
Course: Petroleum Exploration Engineering
 Programs: PPC
 Code: PEN301
 Student: 6
 A+ to C: 100%
 C- to D: 0%
 F: 0
 W: 0
 Average: 3.38
 Std Dev: 3.76



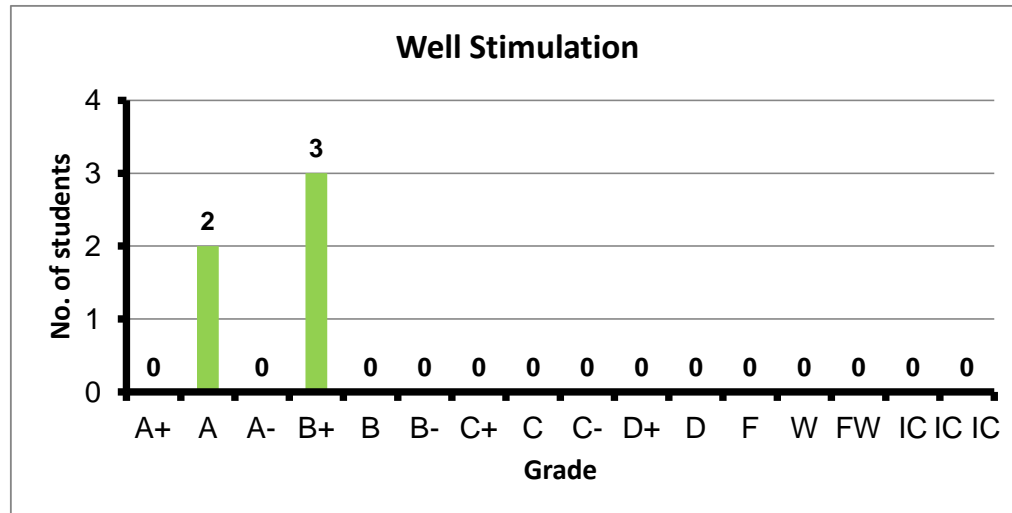
Course: Reservoir Engineering-1
 Programs: PPC
 Code: PEN302
 Student: 18
 A+ to C: 100%
 C- to D: 0%
 F: 0
 W: 0
 Average: 3.47
 Std Dev: 3.61



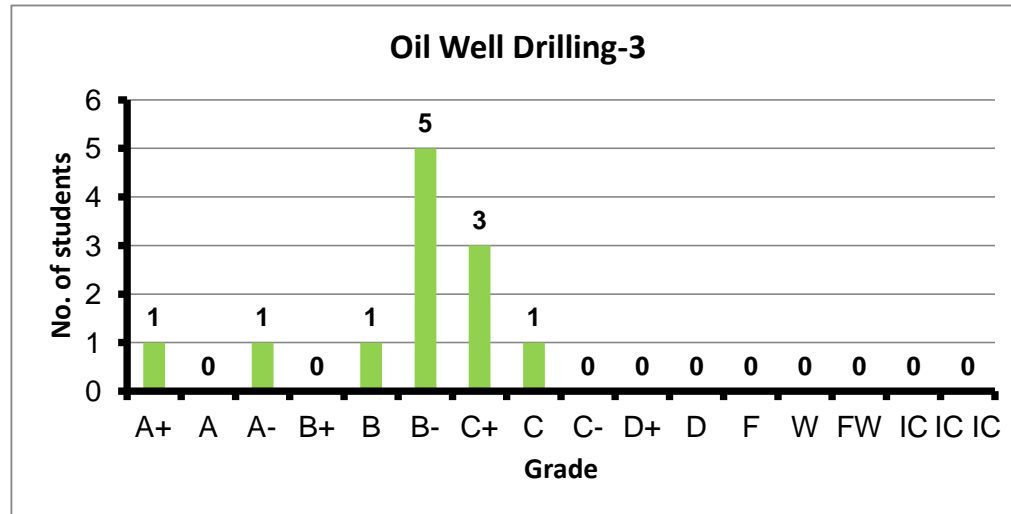
Course: Petroleum Legislations and Economics
 Programs: PPC
 Code: PEN405
 Student: 7
 A+ to C: 100%
 C- to D: 0%
 F: 0
 W: 0
 Average: 3.79
 Std Dev: 4.09



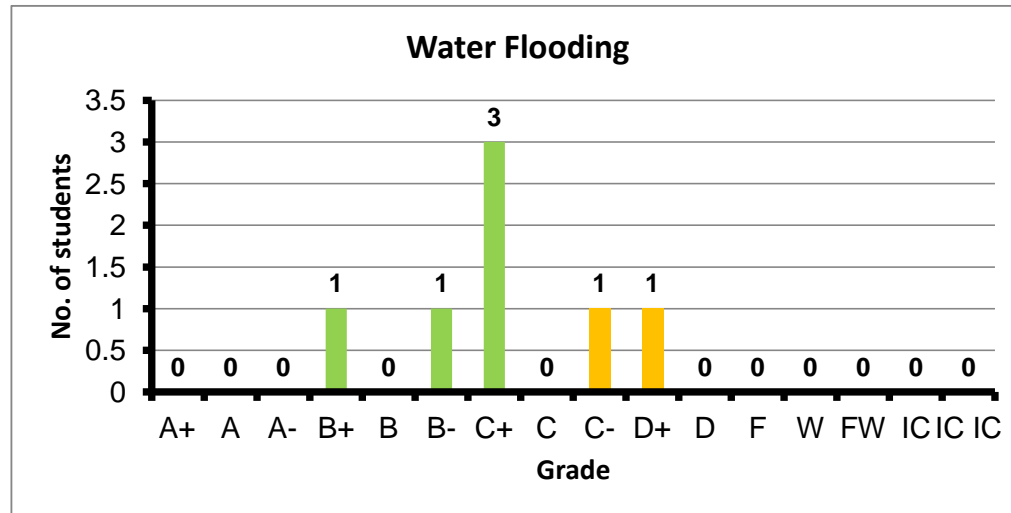
Course: Well Stimulation
 Programs: PPC
 Code: PEN409
 Student: 5
 A+ to C: 100%
 C- to D: 0%
 F: 0
 W: 0
 Average: 3.58
 Std Dev: 4.02



Course: Oil Well Drilling-3
 Programs: PPC
 Code: PEN410
 Student: 12
 A+ to C: 100%
 C- to D: 0%
 F: 0
 W: 0
 Average: 2.76
 Std Dev: 2.94



Course: Water Flooding
 Programs: PPC
 Code: PEN411
 Student: 7
 A+ to C: 71%
 C- to D: 29%
 F: 0
 W: 0
 Average: 2.29
 Std Dev: 2.54



Course: Enhanced Oil Recovery
Programs: PPC
Code: PEN413
Student: 7
A+ to C: 57%
C- to D: 43%
F: 0
W: 0
Average: 2.10
Std Dev: 2.37

