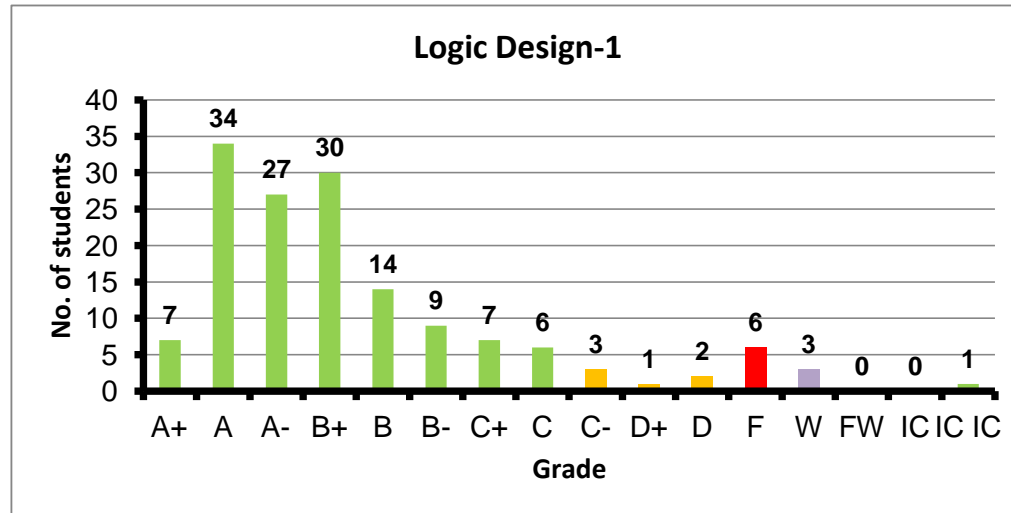
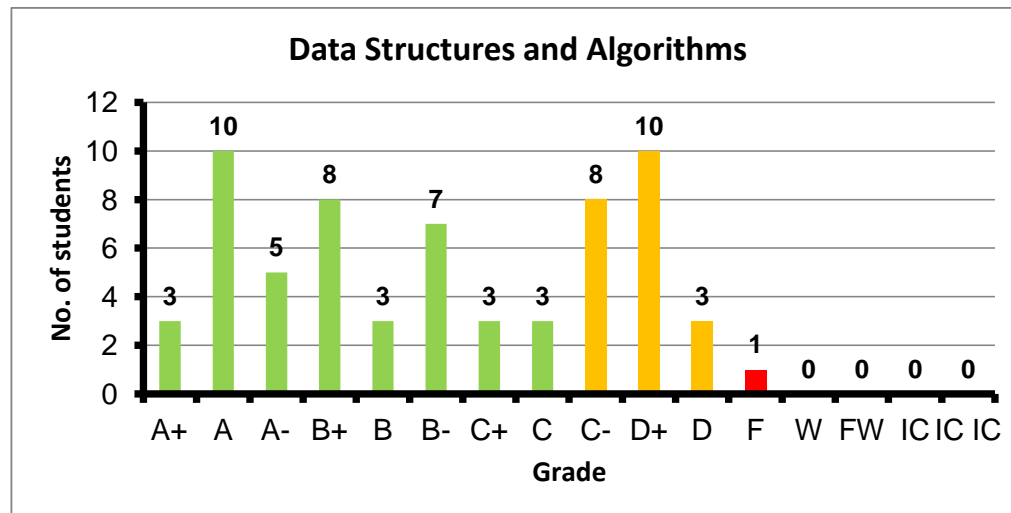


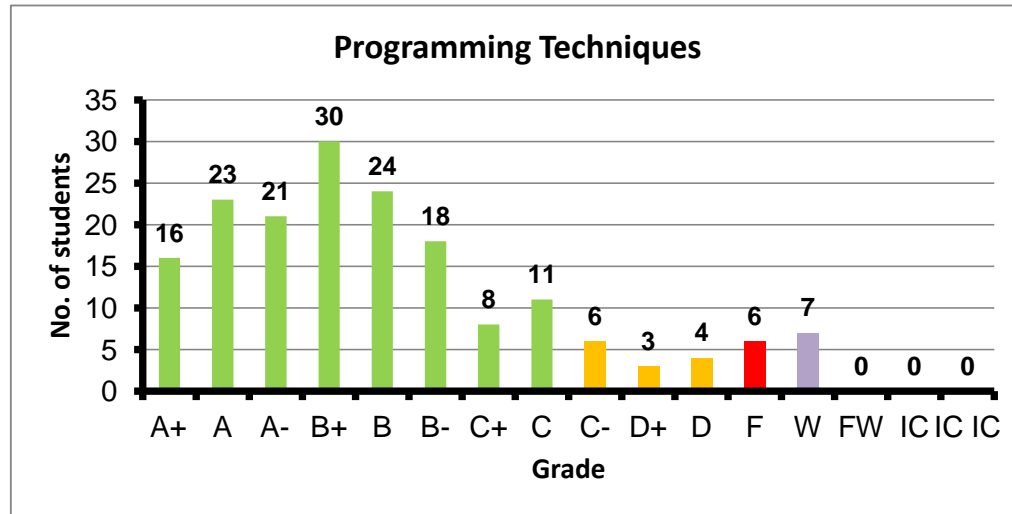
Course: Logic Design-1  
 Programs: CCE-C  
 Code: CMPN101  
 Student: 150  
 A+ to C: 90%  
 C- to D: 4%  
 F: 6  
 W: 3  
 Average: 3.19  
 Std Dev: 3.32



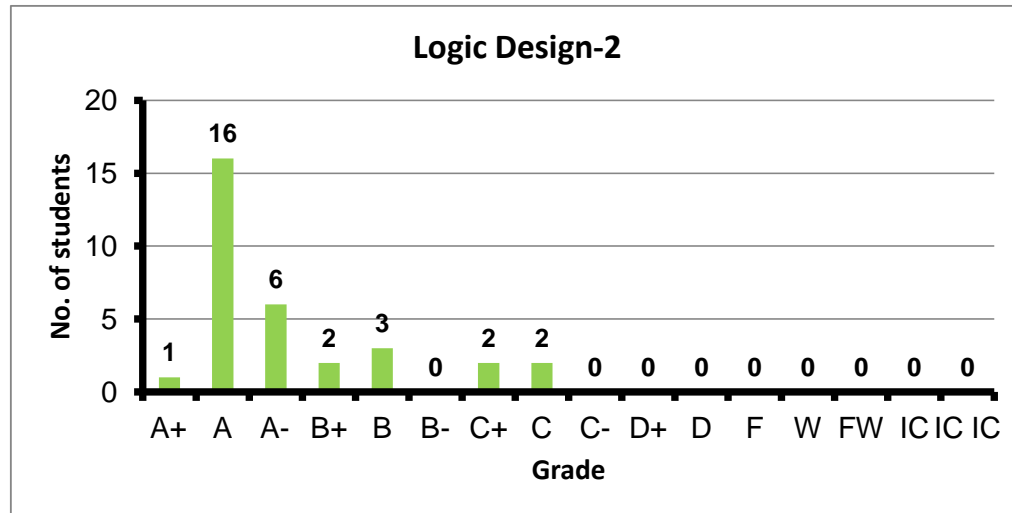
Course: Data Structures and Algorithms  
 Programs: CCE-C  
 Code: CMPN102  
 Student: 64  
 A+ to C: 66%  
 C- to D: 33%  
 F: 1  
 W: 0  
 Average: 2.63  
 Std Dev: 2.85



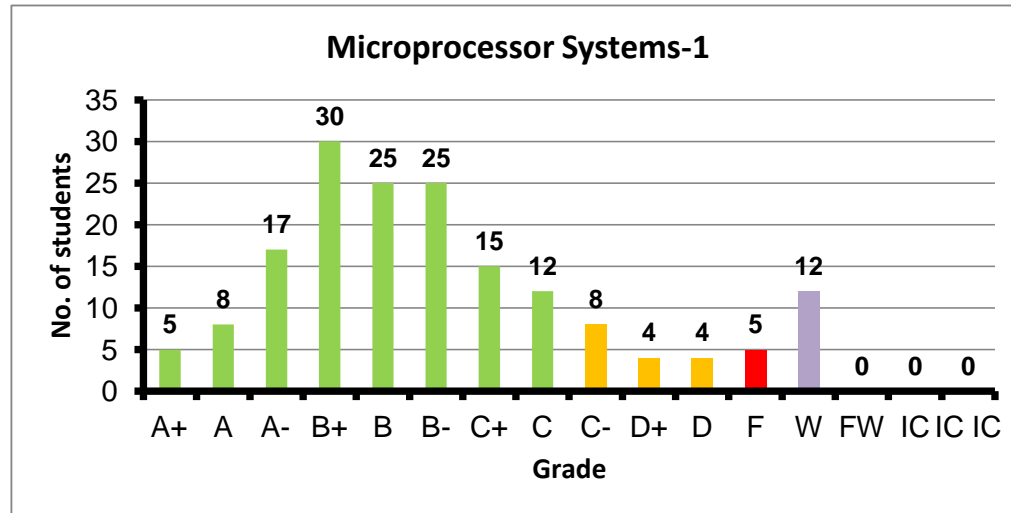
Course: Programming Techniques  
 Programs: CCE-C  
 Code: CMPN103  
 Student: 177  
 A+ to C: 85%  
 C- to D: 7%  
 F: 6  
 W: 7  
 Average: 3.01  
 Std Dev: 1.13



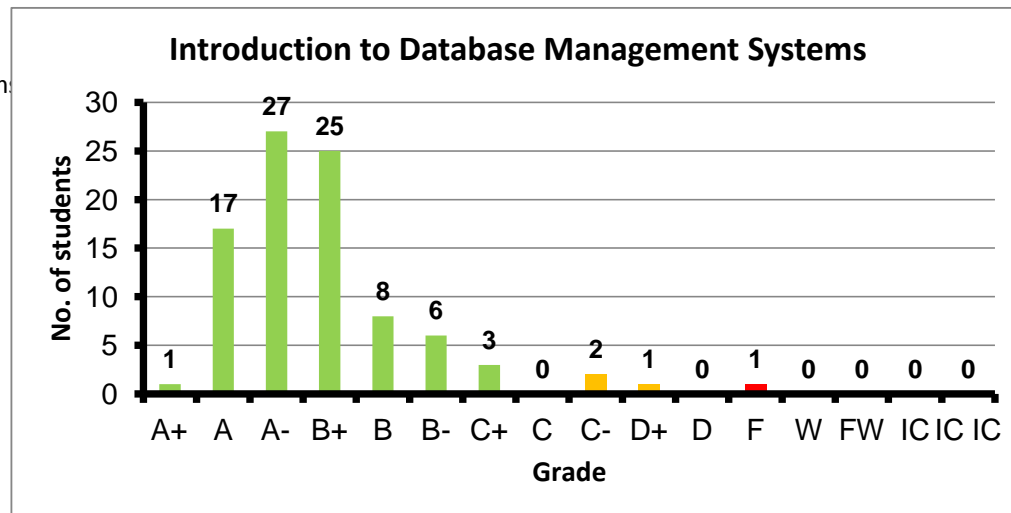
Course: Logic Design-2  
 Programs: CCE-C  
 Code: CMPN111  
 Student: 32  
 A+ to C: 100%  
 C- to D: 0%  
 F: 0  
 W: 0  
 Average: 3.58  
 Std Dev: 1.69



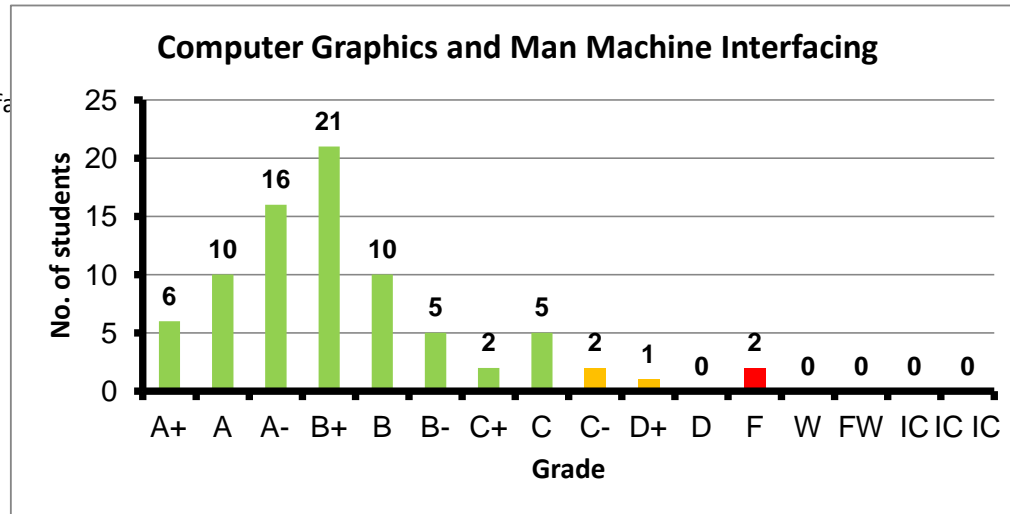
Course: Microprocessor Systems-1  
 Programs: CCE-C  
 Code: CMPN201  
 Student: 170  
 A+ to C: 81%  
 C- to D: 9%  
 F: 5  
 W: 12  
 Average: 2.77  
 Std Dev: 2.85



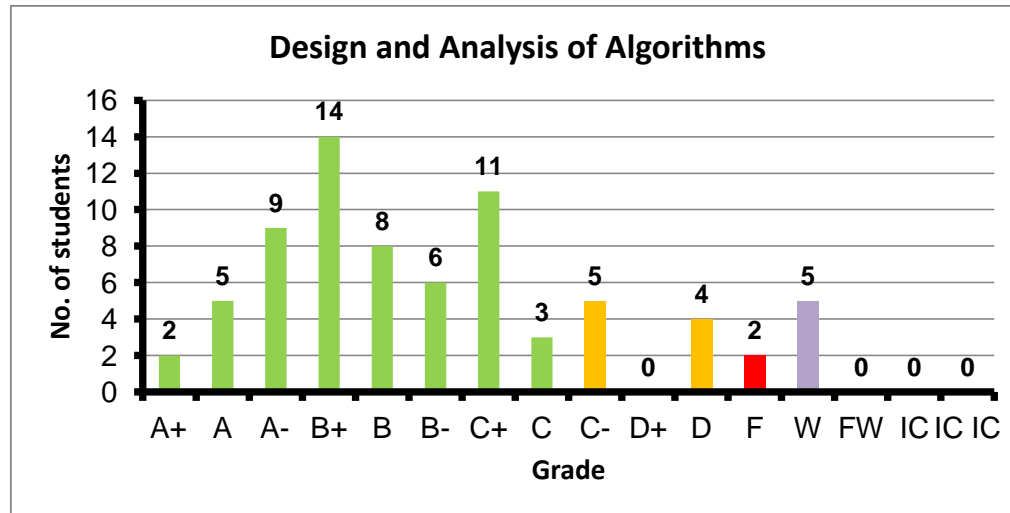
Course: Introduction to Database Management System  
 Programs: CCE-C  
 Code: CMPN202  
 Student: 91  
 A+ to C: 96%  
 C- to D: 3%  
 F: 1  
 W: 0  
 Average: 3.37  
 Std Dev: 3.45



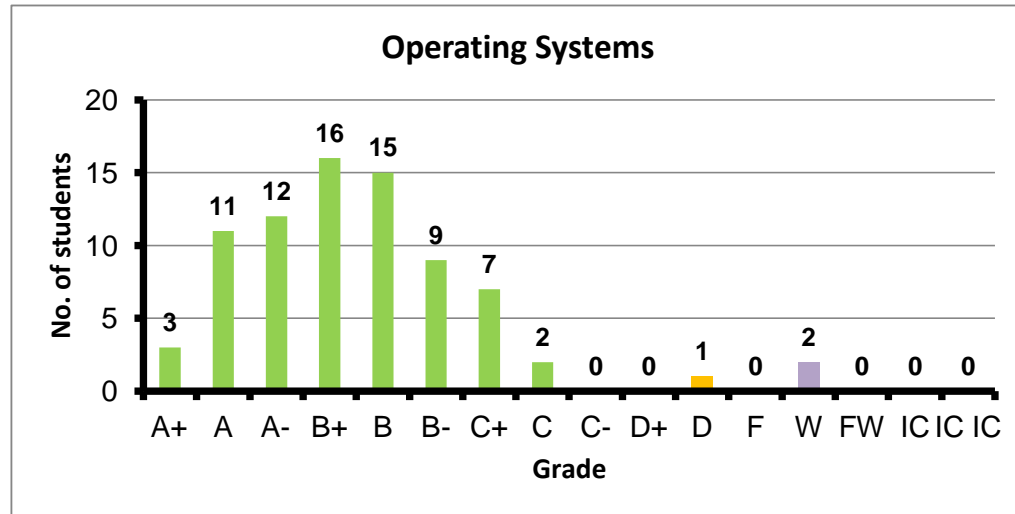
Course: Computer Graphics and Man Machine Interfa  
 Programs: CCE-C  
 Code: CMPN205  
 Student: 80  
 A+ to C: 94%  
 C- to D: 4%  
 F: 2  
 W: 0  
 Average: 3.19  
 Std Dev: 3.32



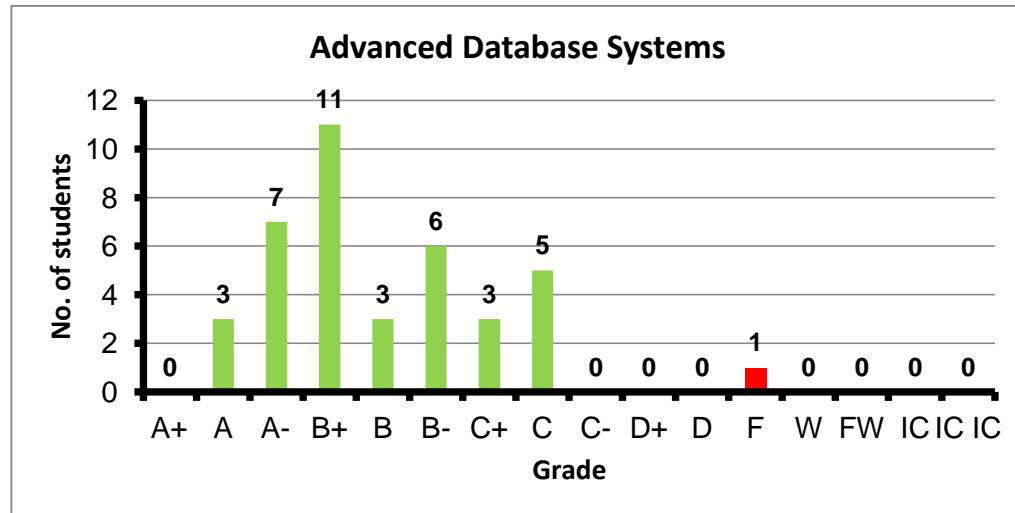
Course: Design and Analysis of Algorithms  
 Programs: CCE-C  
 Code: CMPN302  
 Student: 74  
 A+ to C: 78%  
 C- to D: 12%  
 F: 2  
 W: 5  
 Average: 2.78  
 Std Dev: 2.89



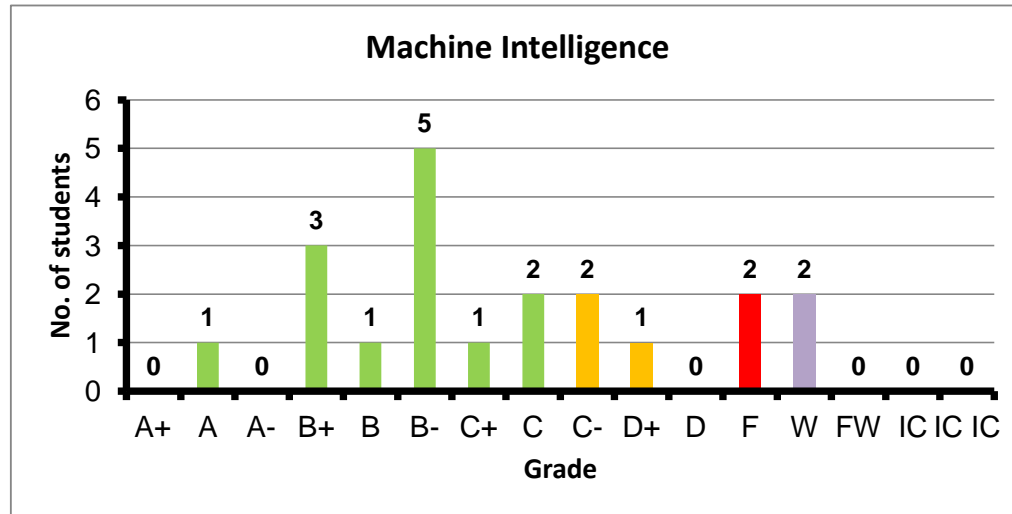
Course: Operating Systems  
 Programs: CCE-C  
 Code: CMPN303  
 Student: 78  
 A+ to C: 96%  
 C- to D: 1%  
 F: 0  
 W: 2  
 Average: 3.21  
 Std Dev: 3.26



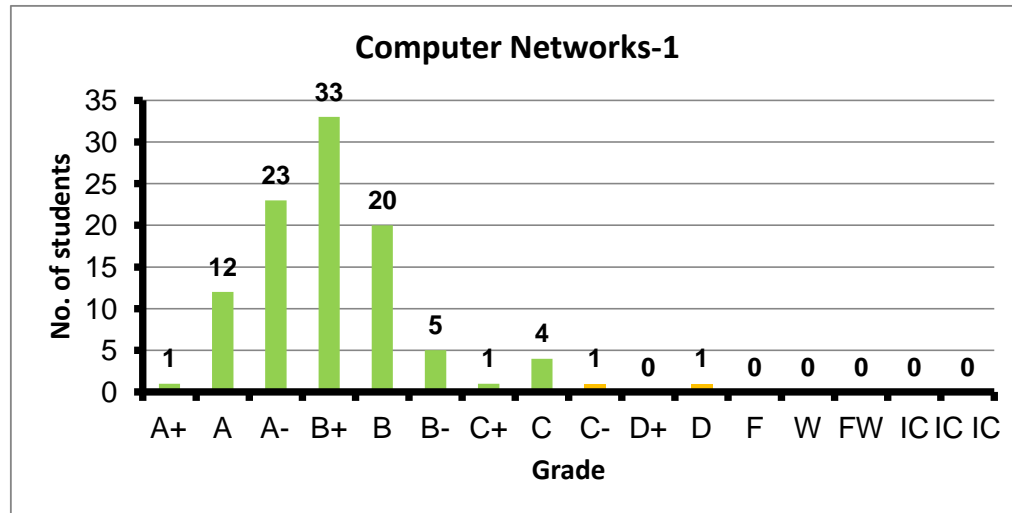
Course: Advanced Database Systems  
 Programs: CCE-C  
 Code: CMPN401  
 Student: 39  
 A+ to C: 97%  
 C- to D: 0%  
 F: 1  
 W: 0  
 Average: 2.98  
 Std Dev: 3.12



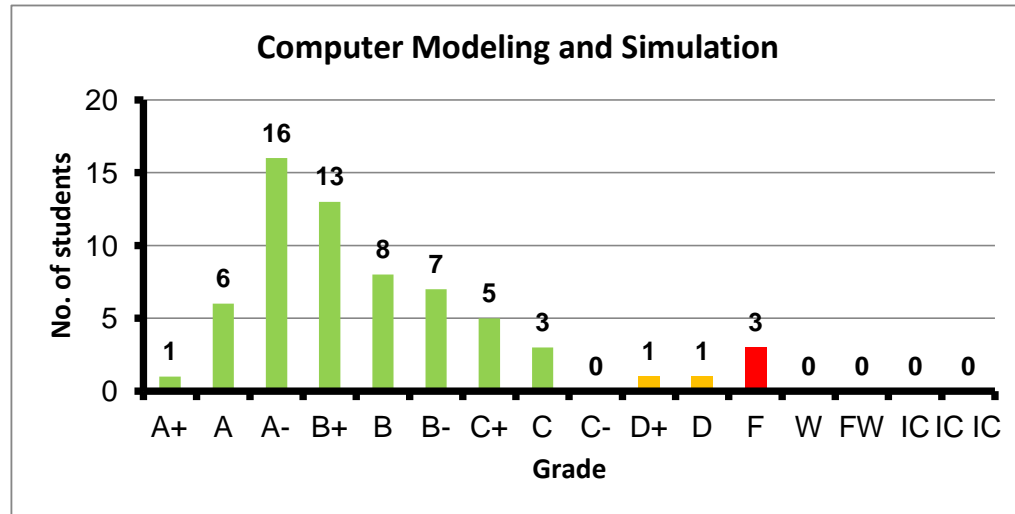
Course: Machine Intelligence  
 Programs: CCE-C  
 Code: CMPN402  
 Student: 20  
 A+ to C: 65%  
 C- to D: 15%  
 F: 2  
 W: 2  
 Average: 2.31  
 Std Dev: 2.51



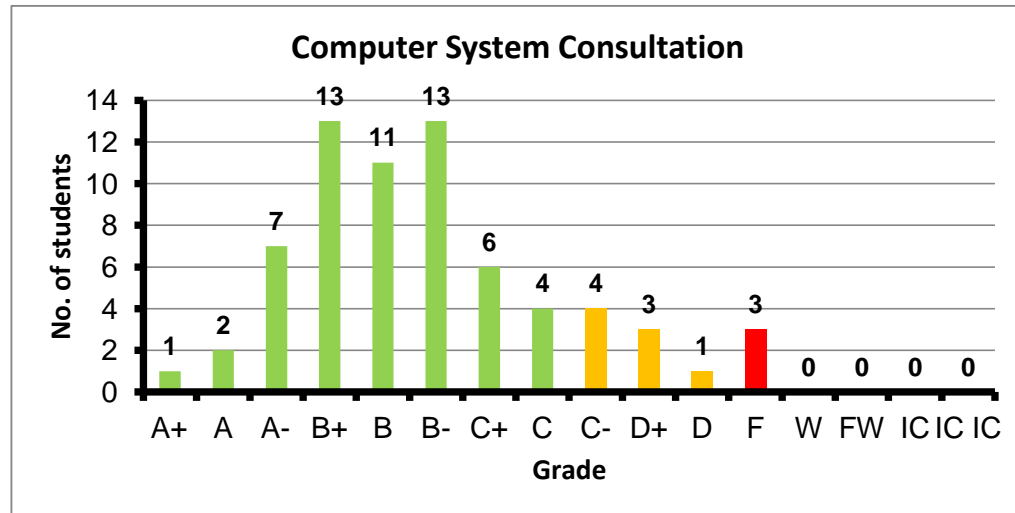
Course: Computer Networks-1  
 Programs: CCE-C  
 Code: CMPN405  
 Student: 101  
 A+ to C: 98%  
 C- to D: 2%  
 F: 0  
 W: 0  
 Average: 3.29  
 Std Dev: 3.35



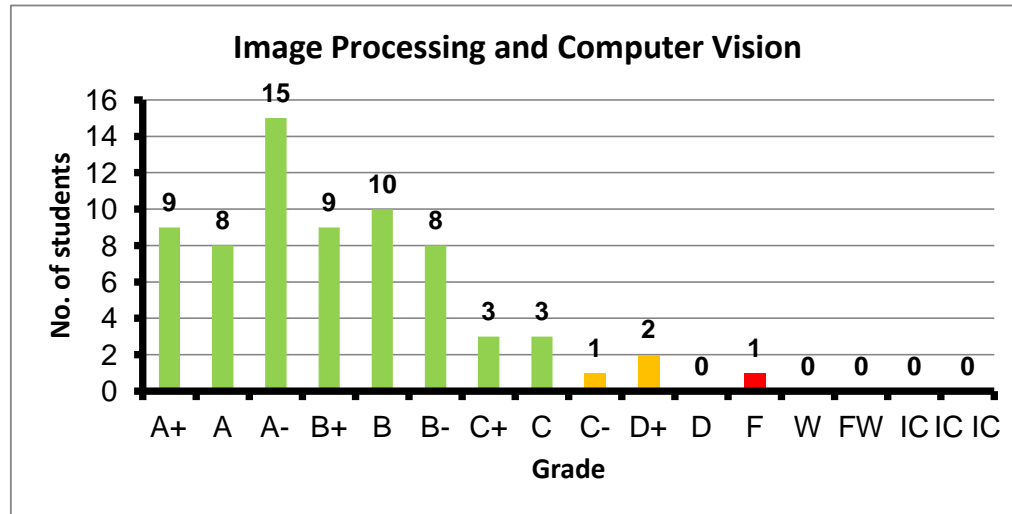
Course: Computer Modeling and Simulation  
 Programs: CCE-C  
 Code: CMPN407  
 Student: 64  
 A+ to C: 92%  
 C- to D: 3%  
 F: 3  
 W: 0  
 Average: 3.01  
 Std Dev: 3.18



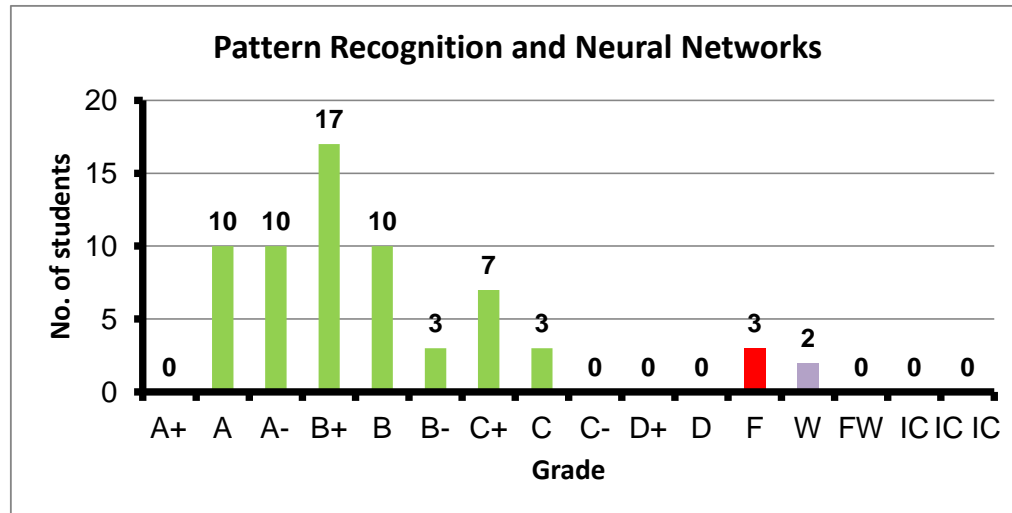
Course: Computer System Consultation  
 Programs: CCE-C  
 Code: CMPN425  
 Student: 68  
 A+ to C: 84%  
 C- to D: 12%  
 F: 3  
 W: 0  
 Average: 2.69  
 Std Dev: 2.85



Course: Image Processing and Computer Vision  
 Programs: CCE-C  
 Code: CMPN446  
 Student: 69  
 A+ to C: 94%  
 C- to D: 4%  
 F: 1  
 W: 0  
 Average: 3.22  
 Std Dev: 3.34

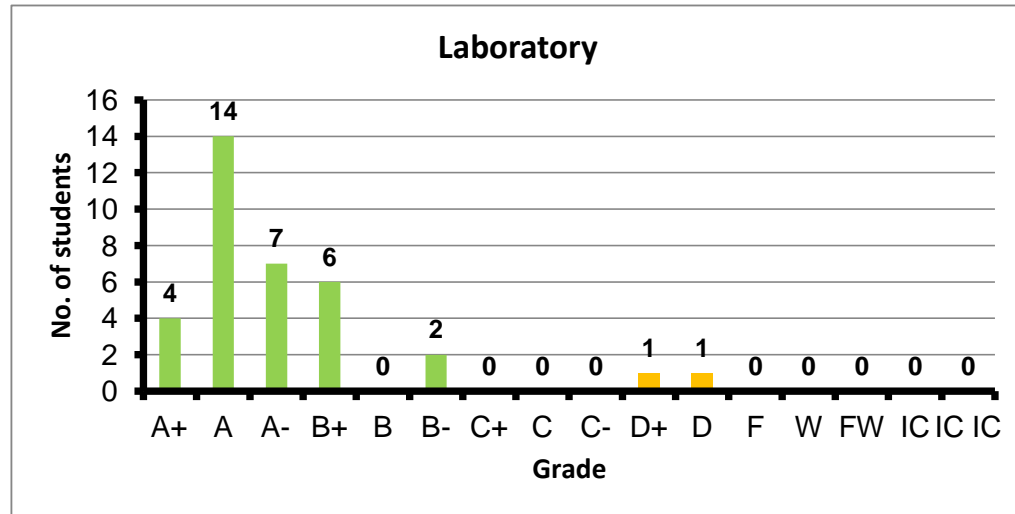


Course: Pattern Recognition and Neural Networks  
 Programs: CCE-C  
 Code: CMPN450  
 Student: 65  
 A+ to C: 92%  
 C- to D: 0%  
 F: 3  
 W: 2  
 Average: 3.07  
 Std Dev: 3.19

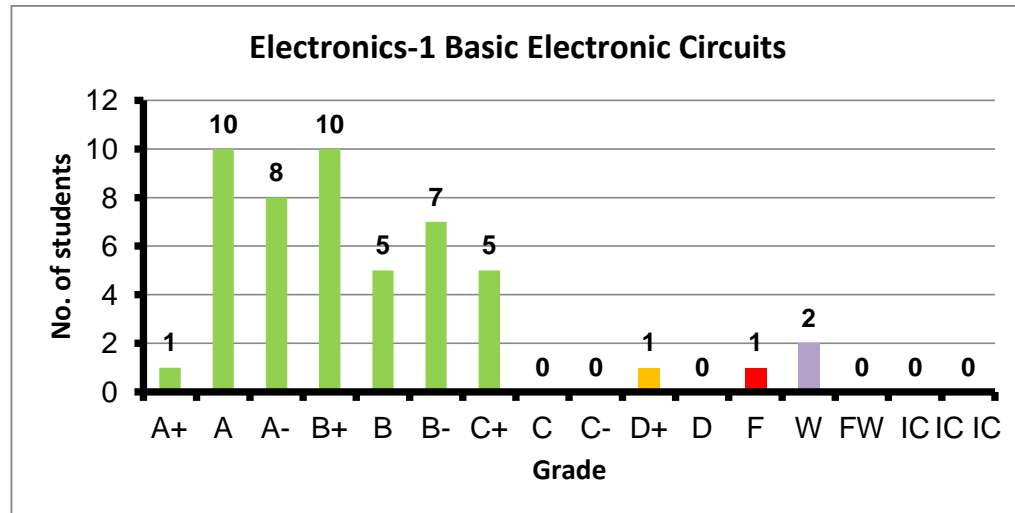




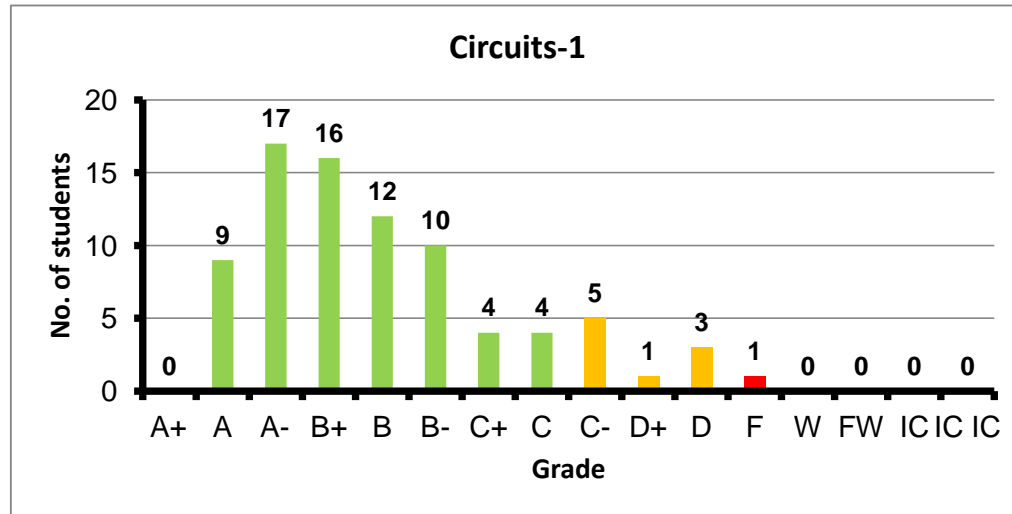
Course: Laboratory  
 Programs: CCE-E  
 Code: ELCN100  
 Student: 35  
 A+ to C: 94%  
 C- to D: 6%  
 F: 0  
 W: 0  
 Average: 3.59  
 Std Dev: 3.70



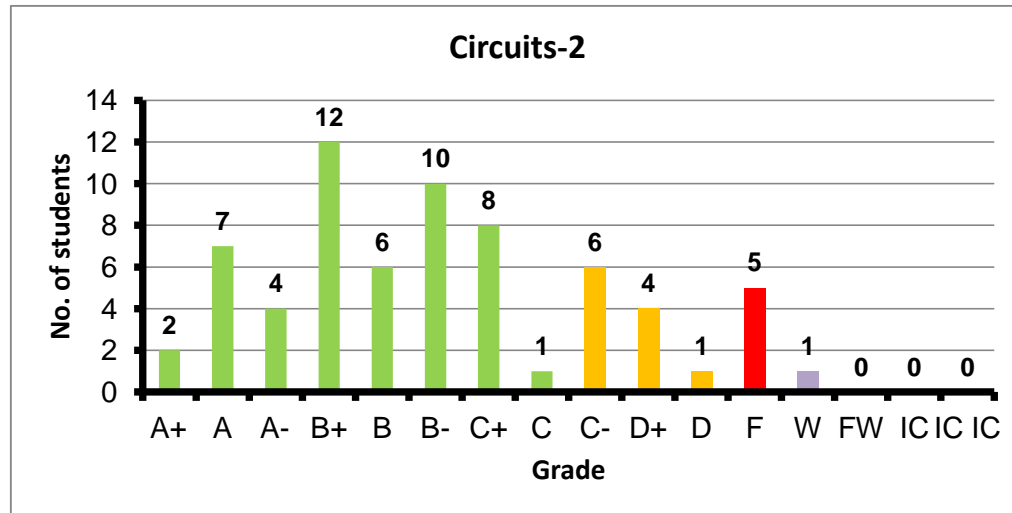
Course: Electronics-1 Basic Electronic Circuits  
 Programs: CCE-E  
 Code: ELCN101  
 Student: 50  
 A+ to C: 92%  
 C- to D: 2%  
 F: 1  
 W: 2  
 Average: 3.20  
 Std Dev: 3.28



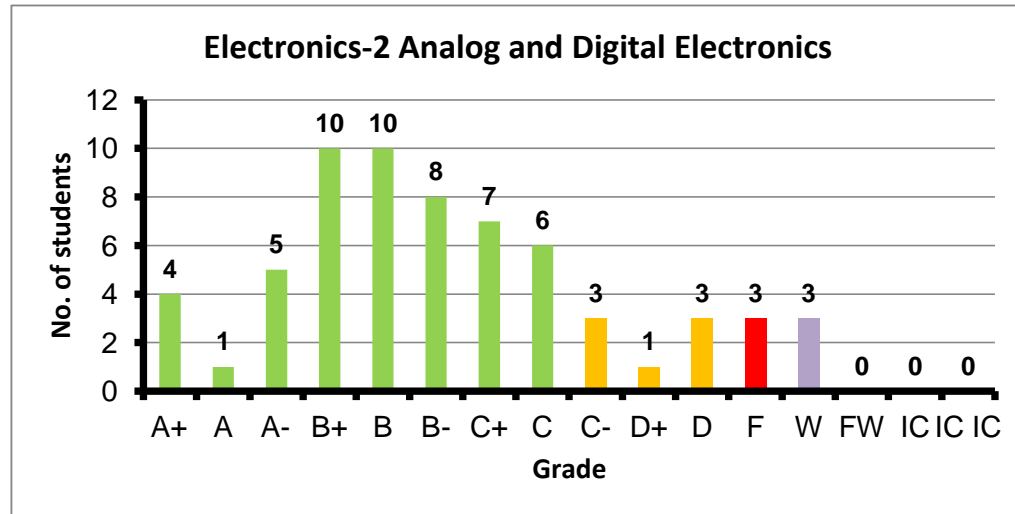
Course: Circuits-1  
 Programs: CCE-E  
 Code: ELCN102  
 Student: 82  
 A+ to C: 88%  
 C- to D: 11%  
 F: 1  
 W: 0  
 Average: 2.99  
 Std Dev: 3.12



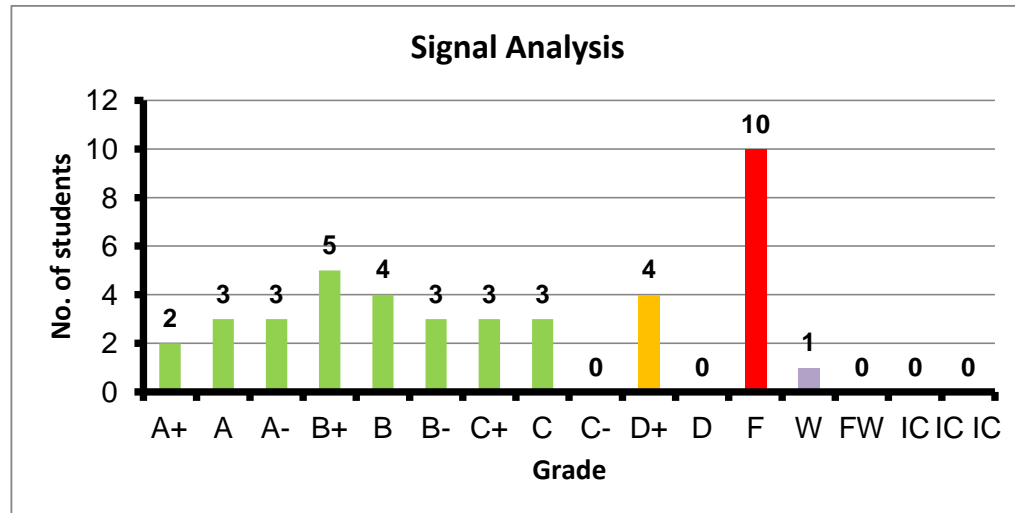
Course: Circuits-2  
 Programs: CCE-E  
 Code: ELCN112  
 Student: 67  
 A+ to C: 75%  
 C- to D: 16%  
 F: 5  
 W: 1  
 Average: 2.62  
 Std Dev: 2.84



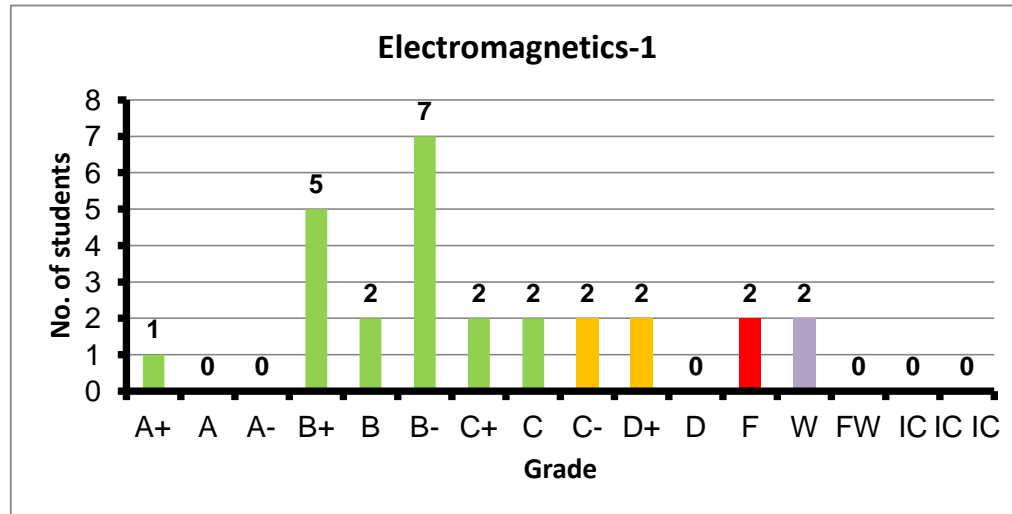
Course: Electronics-2 Analog and Digital Electronics  
 Programs: CCE-E  
 Code: ELCN201  
 Student: 64  
 A+ to C: 80%  
 C- to D: 11%  
 F: 3  
 W: 3  
 Average: 2.63  
 Std Dev: 2.78



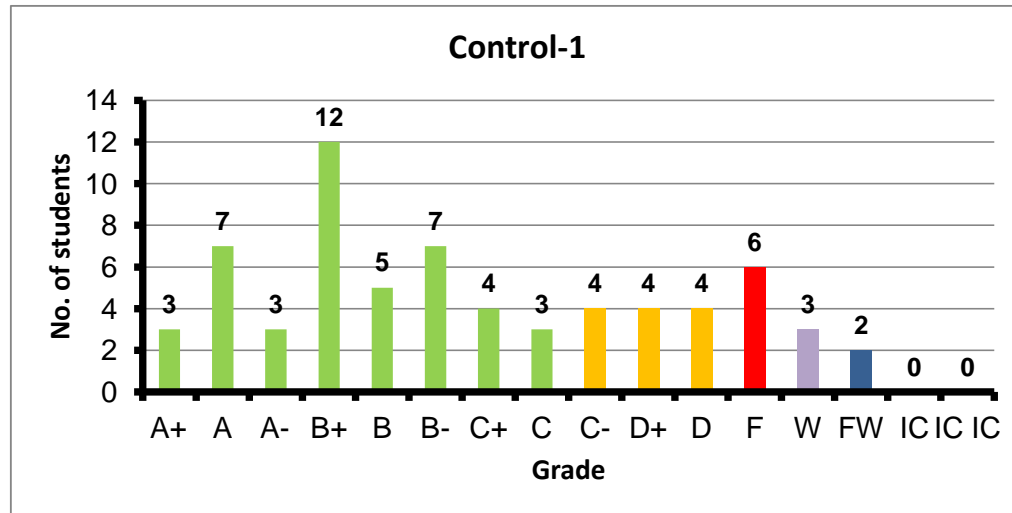
Course: Signal Analysis  
 Programs: CCE-E  
 Code: ELCN203  
 Student: 41  
 A+ to C: 63%  
 C- to D: 10%  
 F: 10  
 W: 1  
 Average: 2.16  
 Std Dev: 2.60



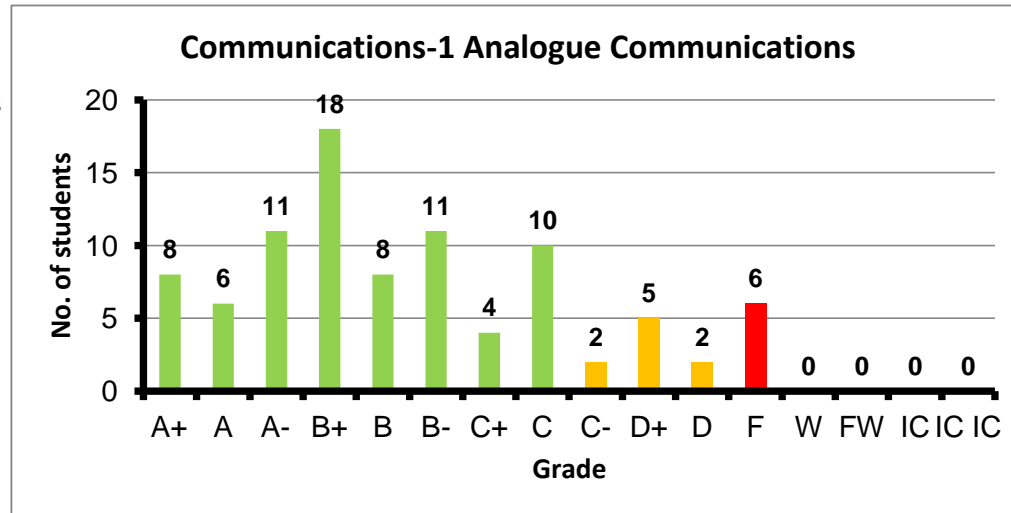
Course: Electromagnetics-1  
 Programs: CCE-E  
 Code: ELCN205  
 Student: 27  
 A+ to C: 70%  
 C- to D: 15%  
 F: 2  
 W: 2  
 Average: 2.41  
 Std Dev: 2.57



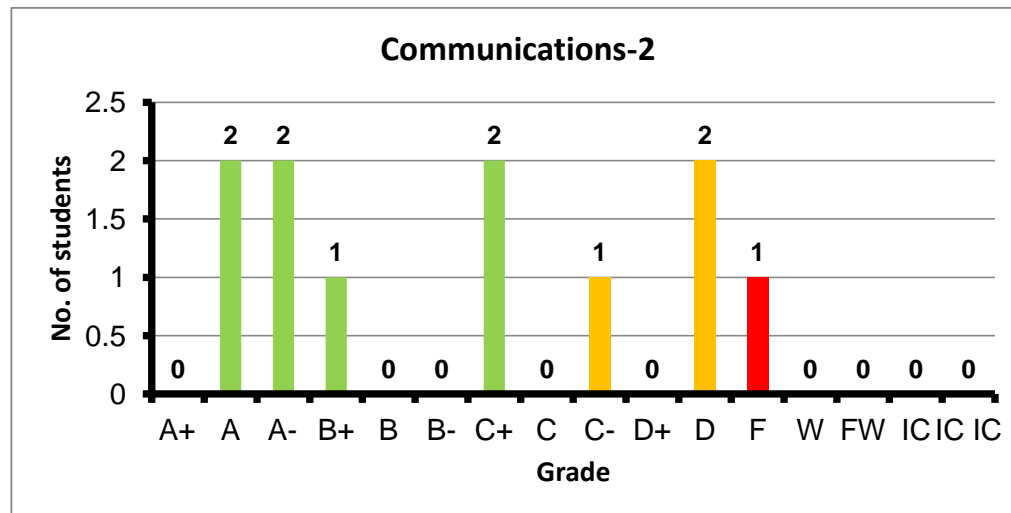
Course: Control-1  
 Programs: CCE-E  
 Code: ELCN304  
 Student: 67  
 A+ to C: 66%  
 C- to D: 18%  
 F: 6  
 W: 3  
 Average: 2.52  
 Std Dev: 2.77



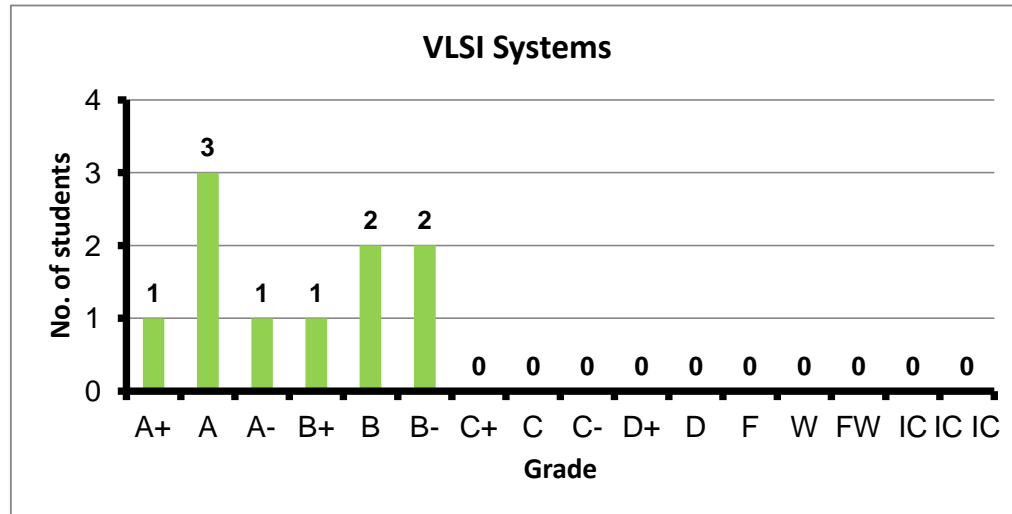
Course: Communications-1 Analogue Communications  
 Programs: CCE-E  
 Code: ELCN306  
 Student: 91  
 A+ to C: 84%  
 C- to D: 10%  
 F: 6  
 W: 0  
 Average: 2.76  
 Std Dev: 2.98



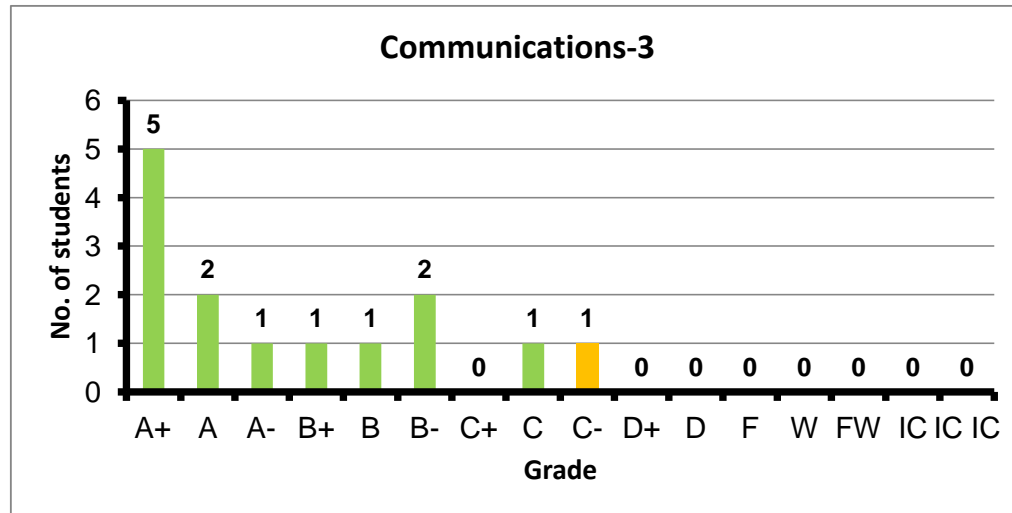
Course: Communications-2  
 Programs: CCE-E  
 Code: ELCN316  
 Student: 11  
 A+ to C: 64%  
 C- to D: 27%  
 F: 1  
 W: 0  
 Average: 2.45  
 Std Dev: 2.93



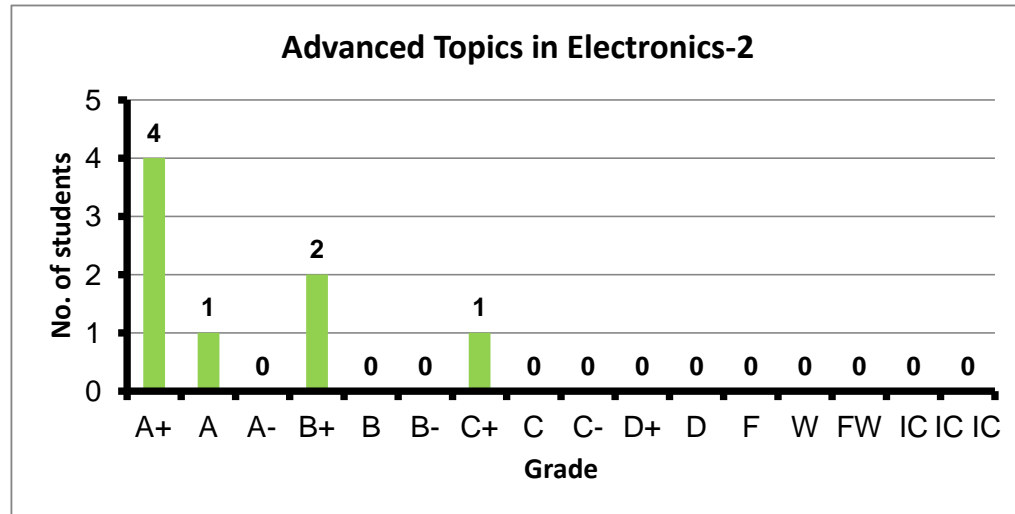
Course: VLSI Systems  
 Programs: CCE-E  
 Code: ELCN321  
 Student: 10  
 A+ to C: 100%  
 C- to D: 0%  
 F: 0  
 W: 0  
 Average: 3.44  
 Std Dev: 3.67



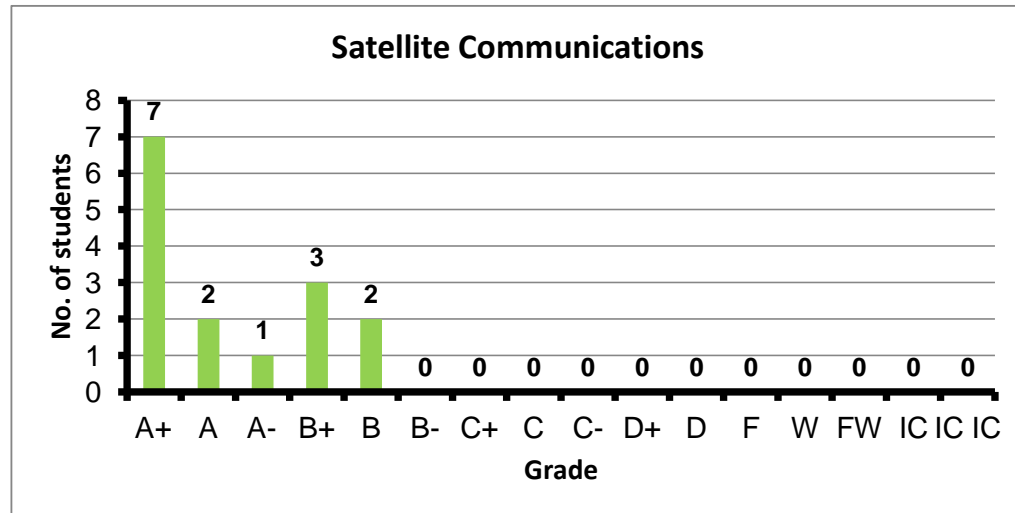
Course: Communications-3  
 Programs: CCE-E  
 Code: ELCN406  
 Student: 14  
 A+ to C: 93%  
 C- to D: 7%  
 F: 0  
 W: 0  
 Average: 3.36  
 Std Dev: 3.58



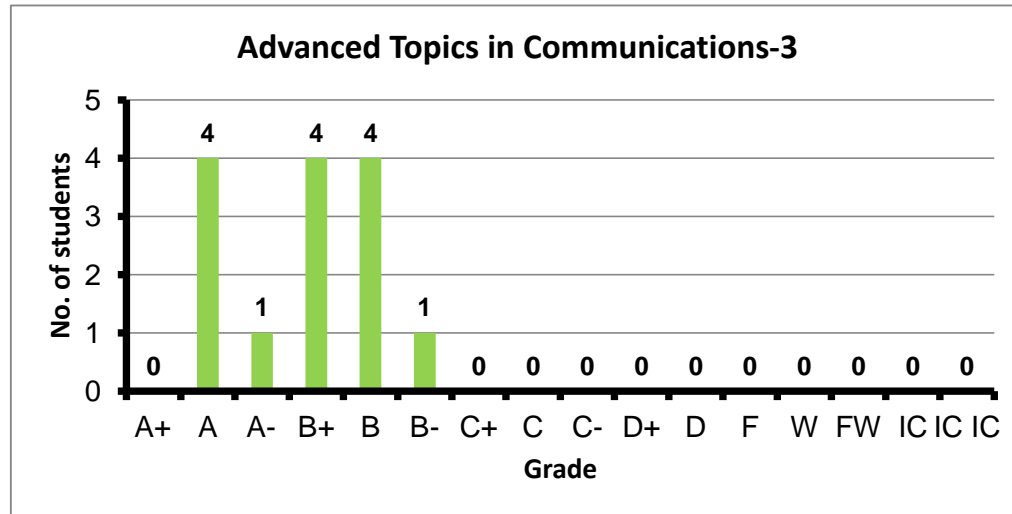
Course: Advanced Topics in Electronics-2  
 Programs: CCE-E  
 Code: ELCN441  
 Student: 8  
 A+ to C: 100%  
 C- to D: 0%  
 F: 0  
 W: 0  
 Average: 3.61  
 Std Dev: 3.91



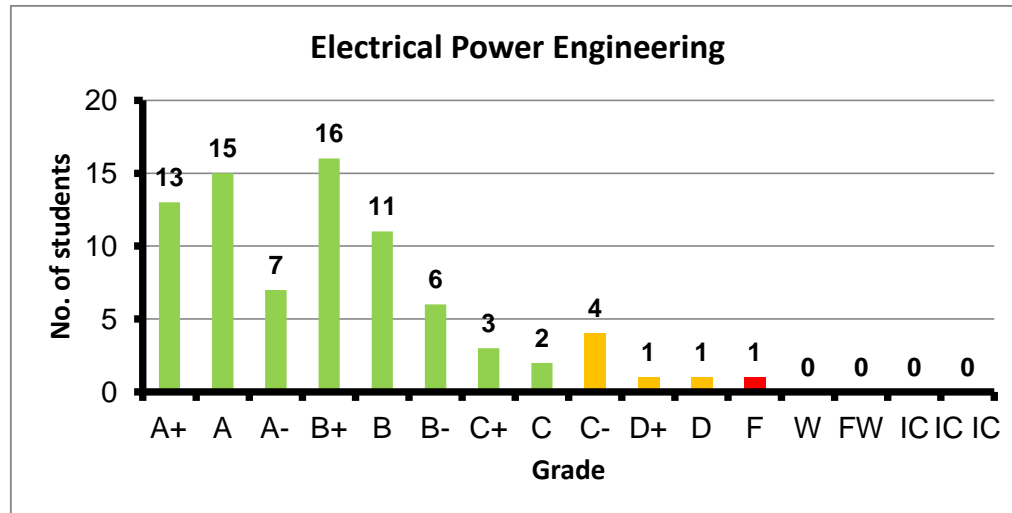
Course: Satellite Communications  
 Programs: CCE-E  
 Code: ELCN466  
 Student: 15  
 A+ to C: 100%  
 C- to D: 0%  
 F: 0  
 W: 0  
 Average: 3.71  
 Std Dev: 3.86



Course: Advanced Topics in Communications-3  
 Programs: CCE-E  
 Code: ELCN476  
 Student: 14  
 A+ to C: 100%  
 C- to D: 0%  
 F: 0  
 W: 0  
 Average: 3.40  
 Std Dev: 3.56

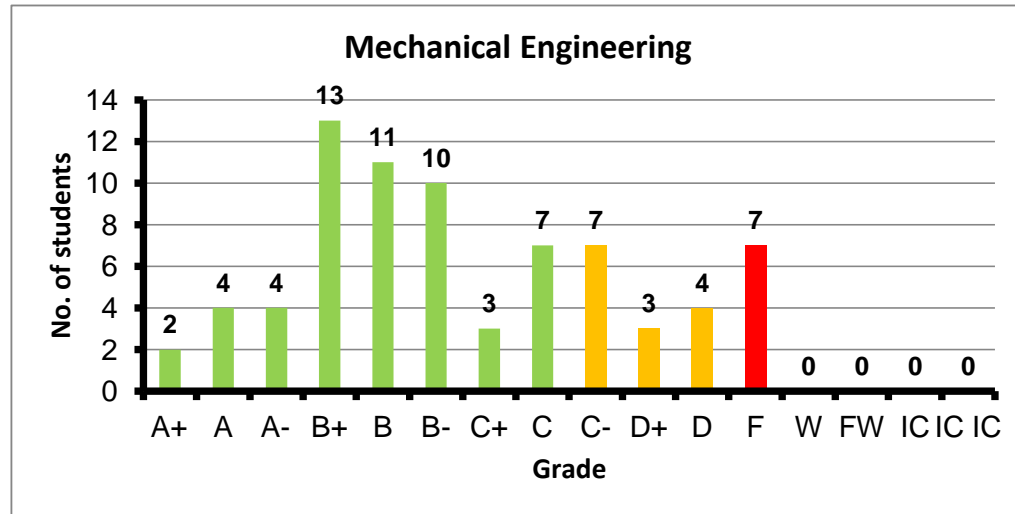


Course: Electrical Power Engineering  
 Programs: CCE-E  
 Code: EPMN125  
 Student: 80  
 A+ to C: 91%  
 C- to D: 8%  
 F: 1  
 W: 0  
 Average: 3.25  
 Std Dev: 3.37

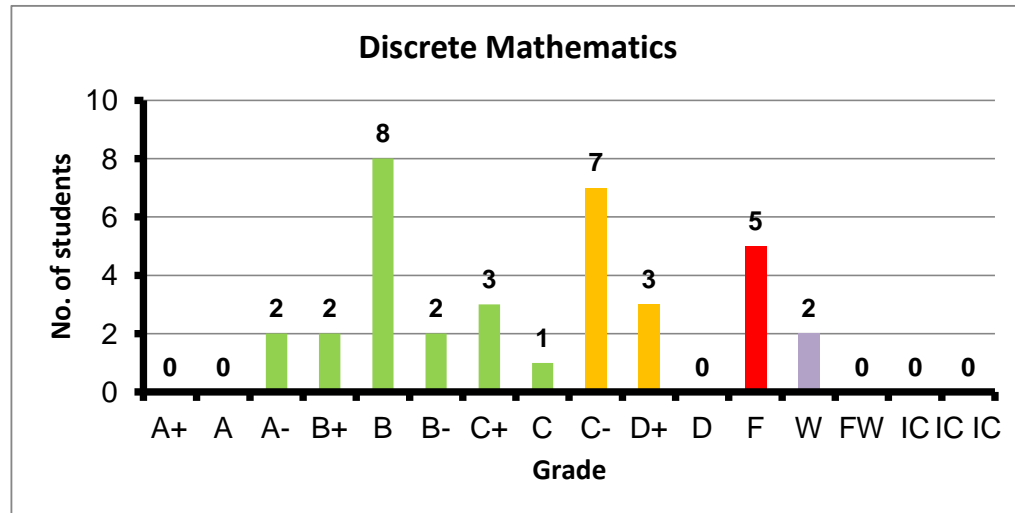




Course: Mechanical Engineering  
 Programs: CCE  
 Code: INTN125  
 Student: 76  
 A+ to C: 72%  
 C- to D: 19%  
 F: 7  
 W: 0  
 Average: 2.44  
 Std Dev: 2.69



Course: Discrete Mathematics  
 Programs: CCE  
 Code: MTHN104  
 Student: 35  
 A+ to C: 51%  
 C- to D: 29%  
 F: 5  
 W: 2  
 Average: 2.07  
 Std Dev: 2.33



Course: Modern Physics  
 Programs: CCE-E  
 Code: PHYN102  
 Student: 77  
 A+ to C: 78%  
 C- to D: 16%  
 F: 3  
 W: 1  
 Average: 2.72  
 Std Dev: 2.92

