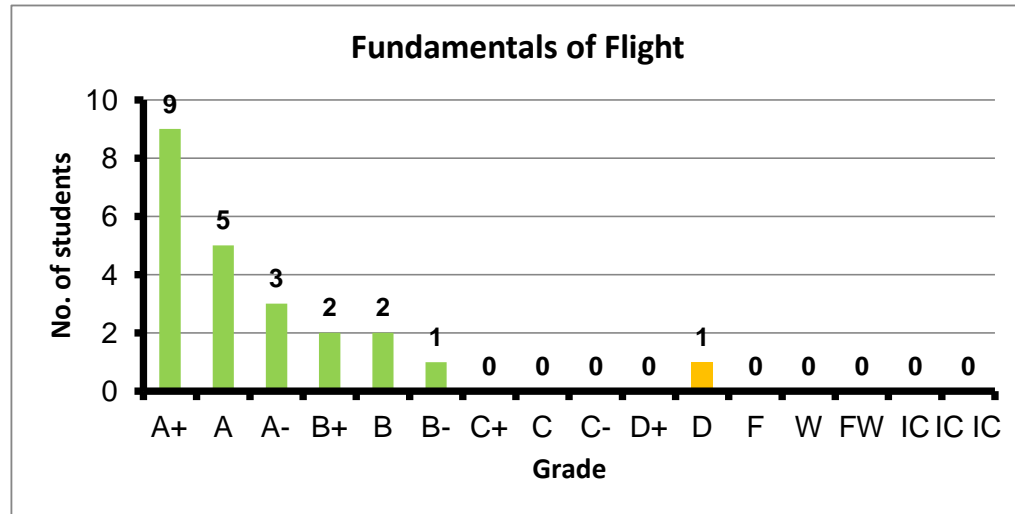
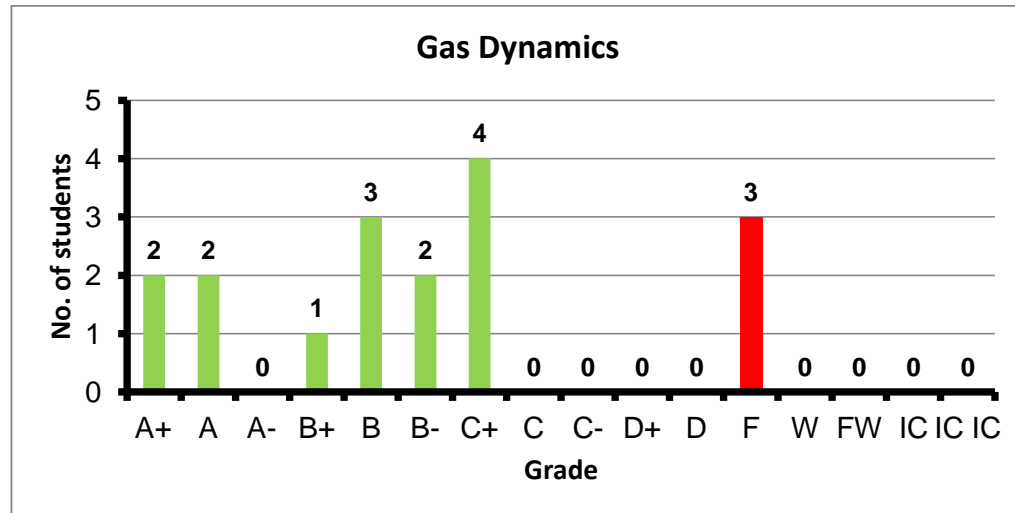


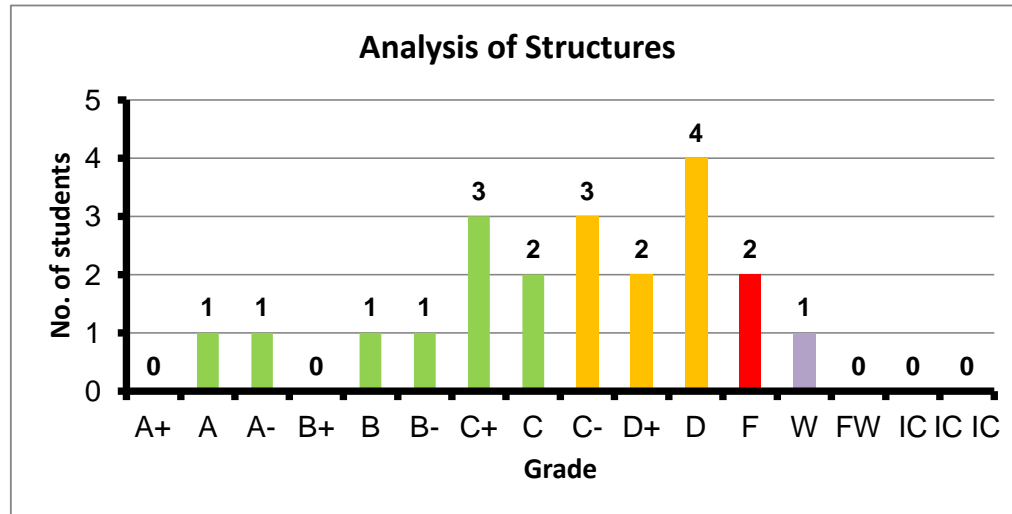
Course: Fundamentals of Flight
 Programs: AEM
 Code: AEMN111
 Student: 23
 A+ to C: 96%
 C- to D: 4%
 F: 0
 W: 0
 Average: 3.63
 Std Dev: 3.77



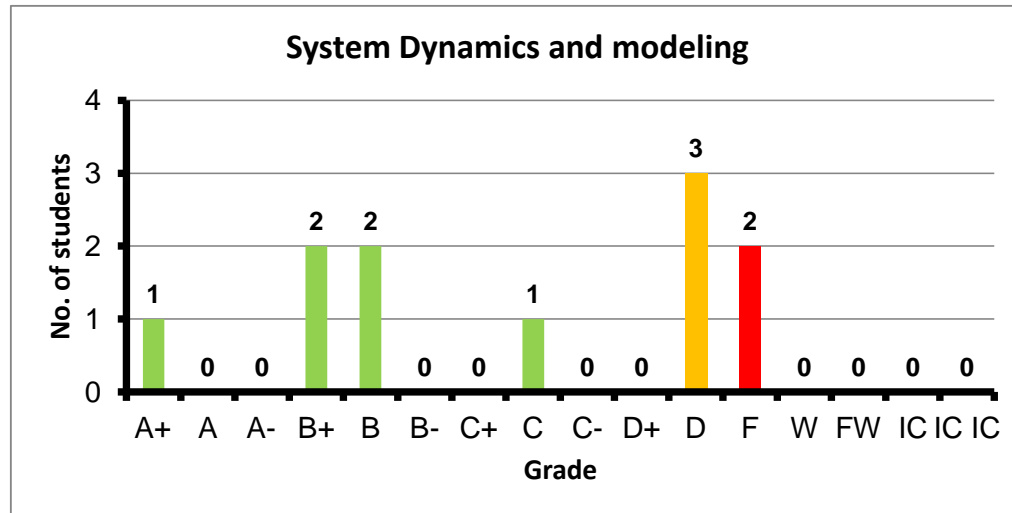
Course: Gas Dynamics
 Programs: AEM
 Code: AEMN211
 Student: 17
 A+ to C: 82%
 C- to D: 0%
 F: 3
 W: 0
 Average: 2.52
 Std Dev: 2.93



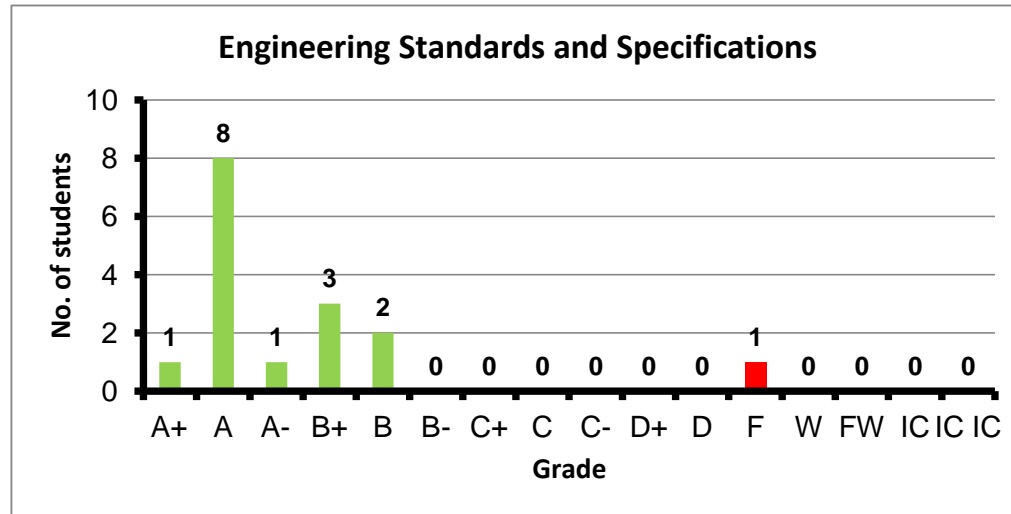
Course: Analysis of Structures
 Programs: AEM
 Code: AEMN212
 Student: 21
 A+ to C: 43%
 C- to D: 43%
 F: 2
 W: 1
 Average: 1.81
 Std Dev: 2.08



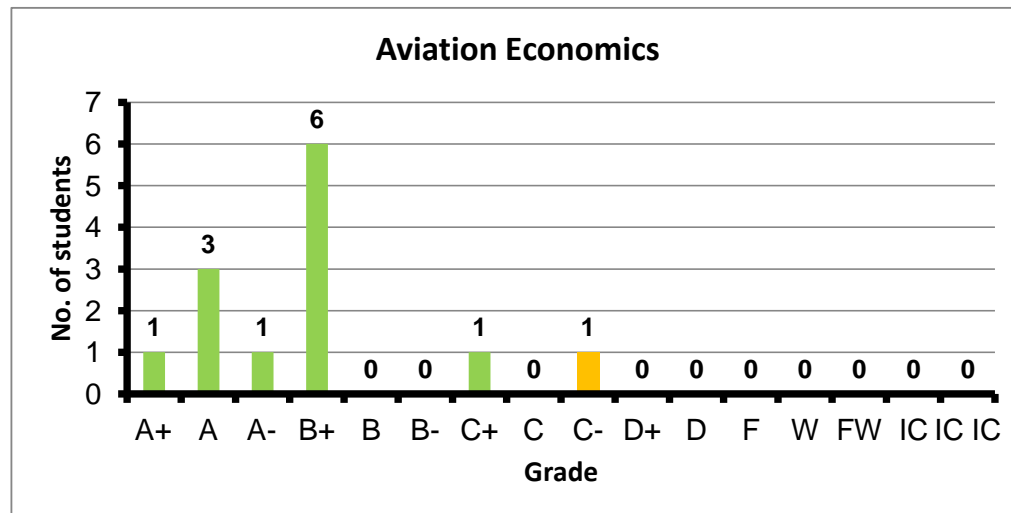
Course: System Dynamics and modeling
 Programs: AEM
 Code: AEMN214
 Student: 11
 A+ to C: 55%
 C- to D: 27%
 F: 2
 W: 0
 Average: 1.96
 Std Dev: 2.51



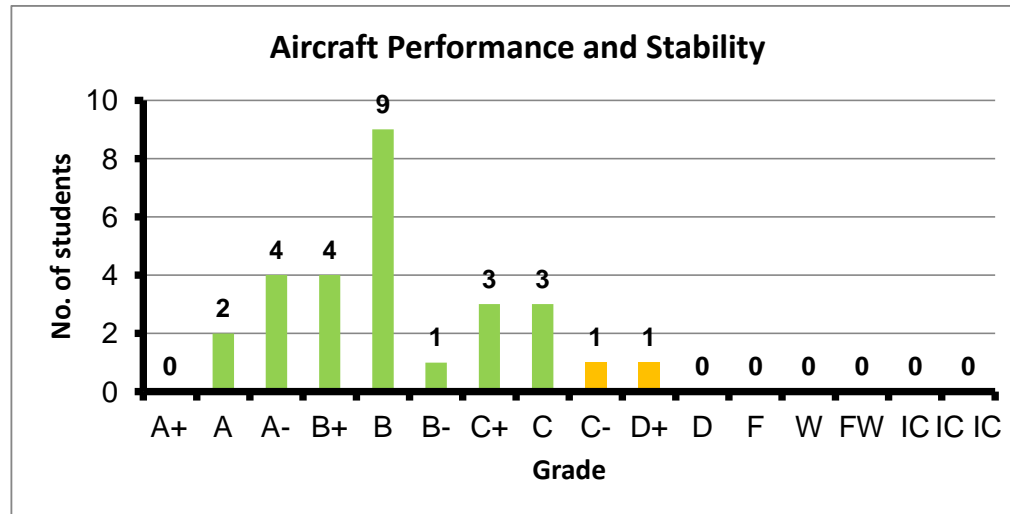
Course: Engineering Standards and Specifications
 Programs: AEM
 Code: AEMN215
 Student: 16
 A+ to C: 94%
 C- to D: 0%
 F: 1
 W: 0
 Average: 3.48
 Std Dev: 3.73



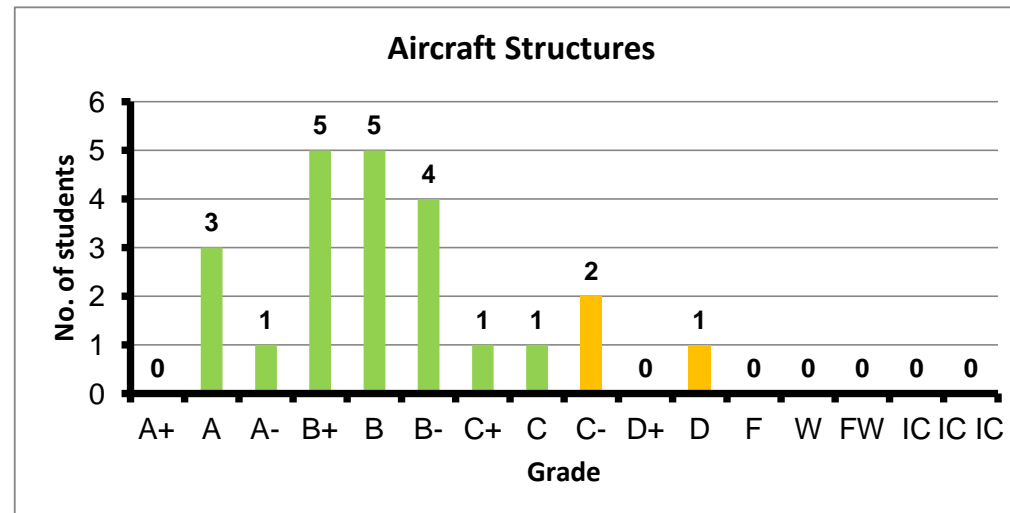
Course: Aviation Economics
 Programs: AEM
 Code: AEMN216
 Student: 13
 A+ to C: 92%
 C- to D: 8%
 F: 0
 W: 0
 Average: 3.35
 Std Dev: 3.55



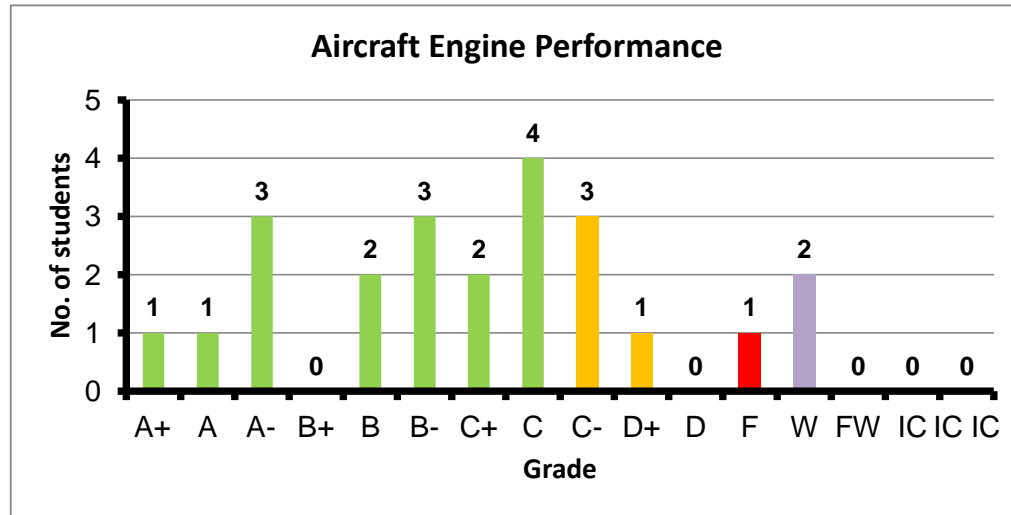
Course: Aircraft Performance and Stability
 Programs: AEM
 Code: AEMN311
 Student: 28
 A+ to C: 93%
 C- to D: 7%
 F: 0
 W: 0
 Average: 2.92
 Std Dev: 3.05



Course: Aircraft Structures
 Programs: AEM
 Code: AEMN312
 Student: 23
 A+ to C: 87%
 C- to D: 13%
 F: 0
 W: 0
 Average: 2.90
 Std Dev: 3.06



Course: Aircraft Engine Performance
 Programs: AEM
 Code: AEMN313
 Student: 23
 A+ to C: 70%
 C- to D: 17%
 F: 1
 W: 2
 Average: 2.49
 Std Dev: 2.65



Course: Mechanical and Electrical Systems
 Programs: AEM
 Code: INTN205
 Student: 19
 A+ to C: 63%
 C- to D: 32%
 F: 1
 W: 0
 Average: 2.24
 Std Dev: 2.51

