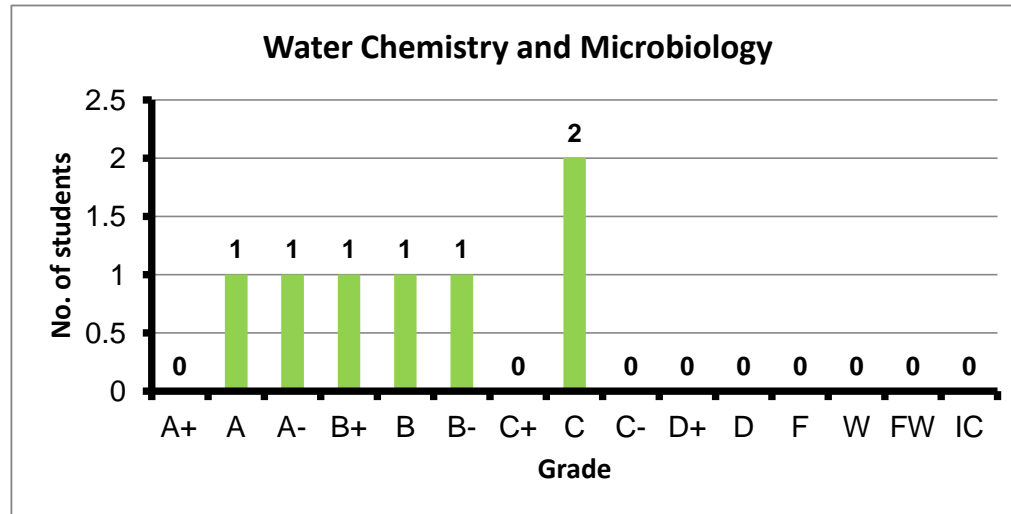
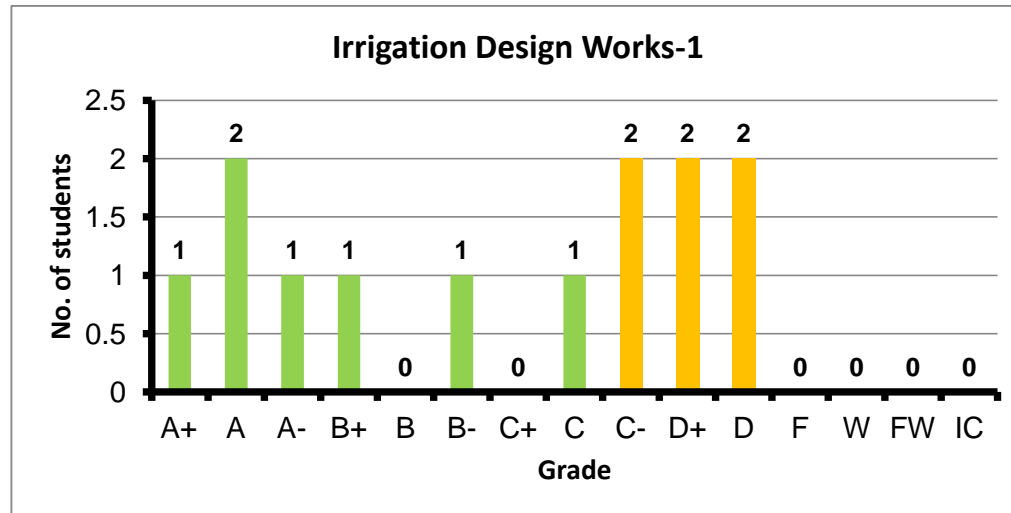


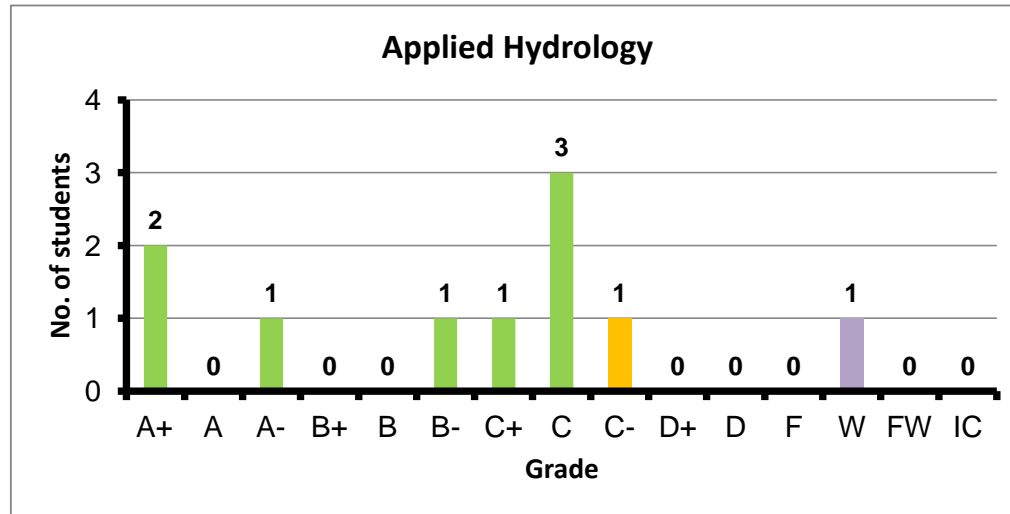
Course: Water Chemistry and Microbiology  
 Programs: WEE  
 Code: IHDN203  
 Student: 7  
 A+ to C: 100%  
 C- to D: 0%  
 F: 0  
 W: 0  
 Average: 2.96  
 Std Dev: 3.29



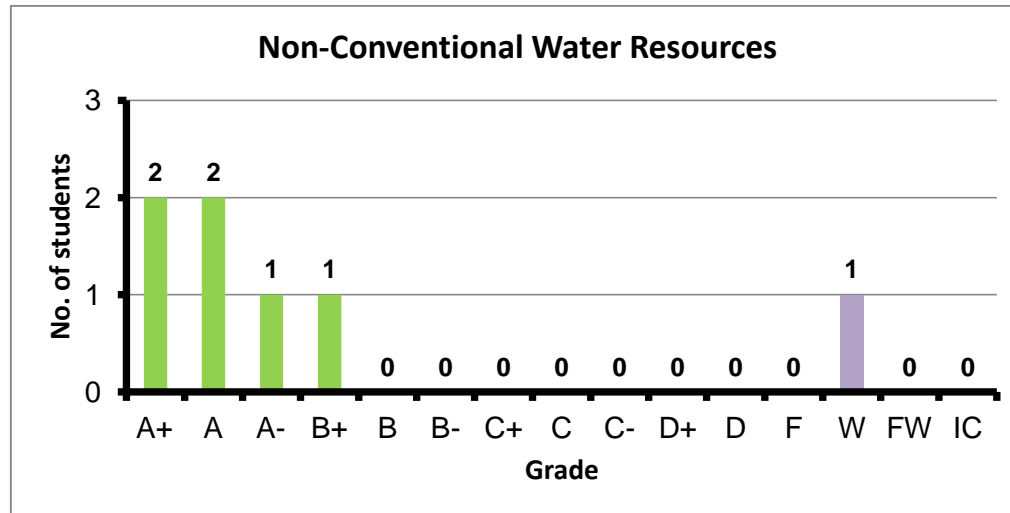
Course: Irrigation Design Works-1  
 Programs: WEE  
 Code: IHDN302  
 Student: 13  
 A+ to C: 54%  
 C- to D: 46%  
 F: 0  
 W: 0  
 Average: 2.45  
 Std Dev: 2.81



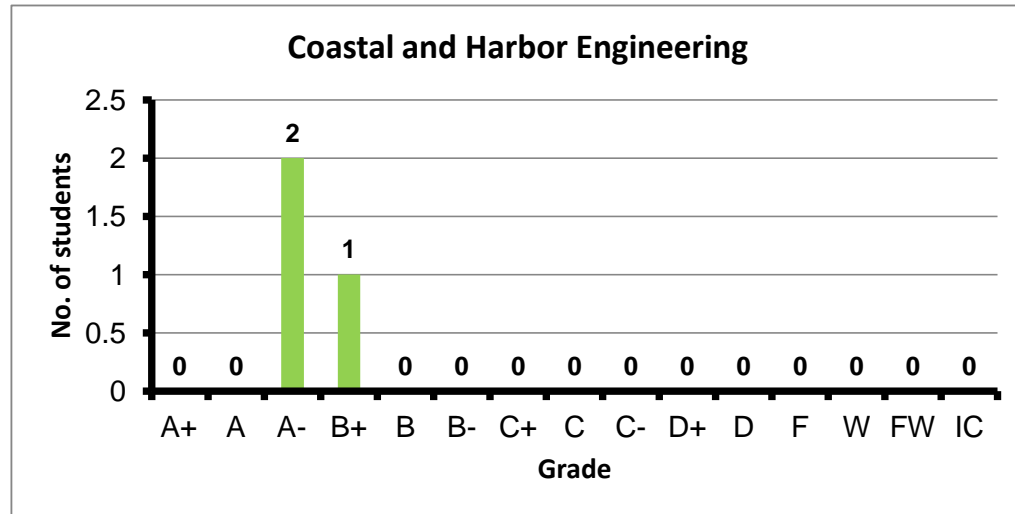
Course: Applied Hydrology  
 Programs: WEE  
 Code: IHDN305  
 Student: 10  
 A+ to C: 80%  
 C- to D: 10%  
 F: 0  
 W: 1  
 Average: 2.71  
 Std Dev: 2.92



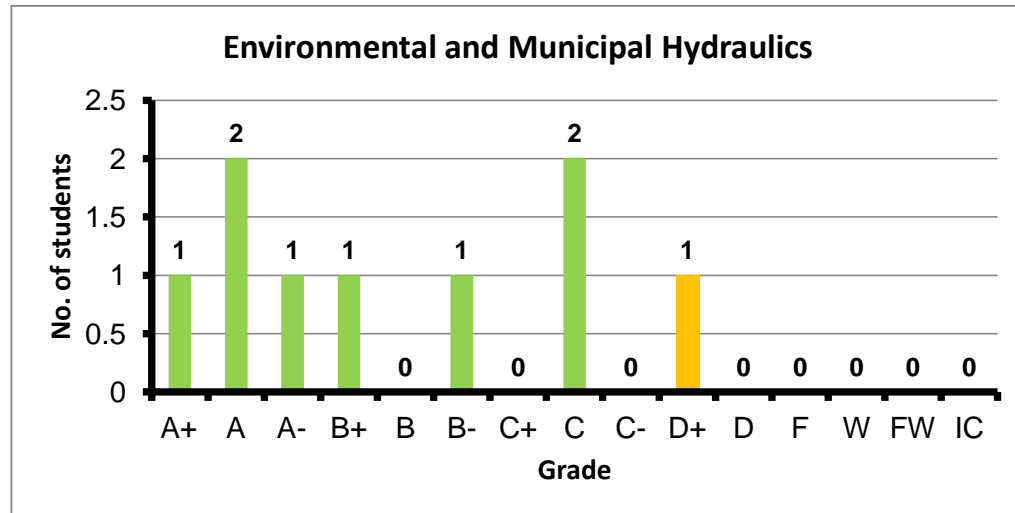
Course: Non-Conventional Water Resources  
 Programs: WEE  
 Code: IHDN352  
 Student: 7  
 A+ to C: 86%  
 C- to D: 0%  
 F: 0  
 W: 1  
 Average: 3.83  
 Std Dev: 4.05



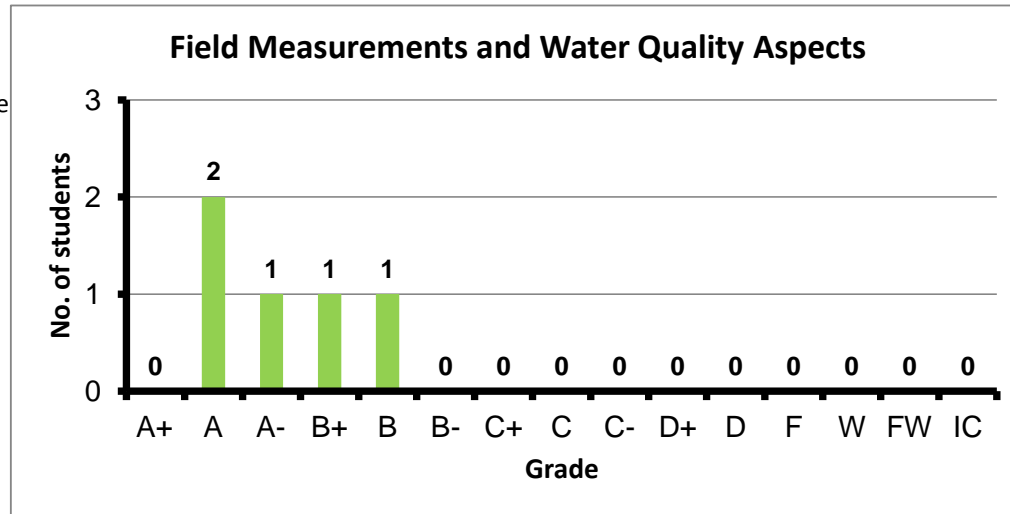
Course: Coastal and Harbor Engineering  
 Programs: WEE  
 Code: IHDN401  
 Student: 3  
 A+ to C: 100%  
 C- to D: 0%  
 F: 0  
 W: 0  
 Average: 3.57  
 Std Dev: 4.37



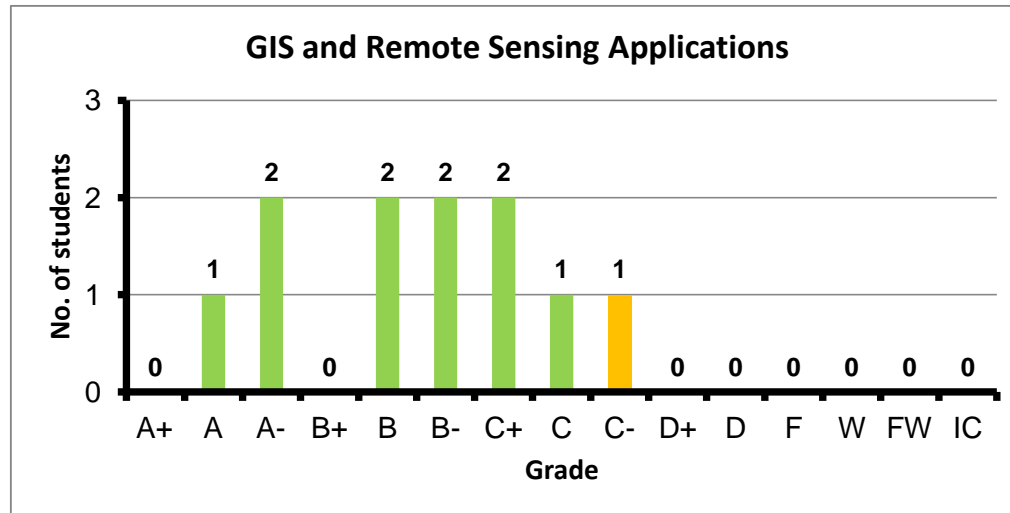
Course: Environmental and Municipal Hydraulics  
 Programs: WEE  
 Code: IHDN402  
 Student: 9  
 A+ to C: 89%  
 C- to D: 11%  
 F: 0  
 W: 0  
 Average: 3.01  
 Std Dev: 3.35



Course: Field Measurements and Water Quality Aspe  
 Programs: WEE  
 Code: IHDN403  
 Student: 5  
 A+ to C: 100%  
 C- to D: 0%  
 F: 0  
 W: 0  
 Average: 3.60  
 Std Dev: 4.05



Course: GIS and Remote Sensing Applications  
 Programs: WEE  
 Code: PBWN445  
 Student: 11  
 A+ to C: 91%  
 C- to D: 9%  
 F: 0  
 W: 0  
 Average: 2.83  
 Std Dev: 3.06



Course: Infrastructure Asset Management  
 Programs: WEE  
 Code: STRN345  
 Student: 9  
 A+ to C: 67%  
 C- to D: 33%  
 F: 0  
 W: 0  
 Average: 2.44  
 Std Dev: 2.77

