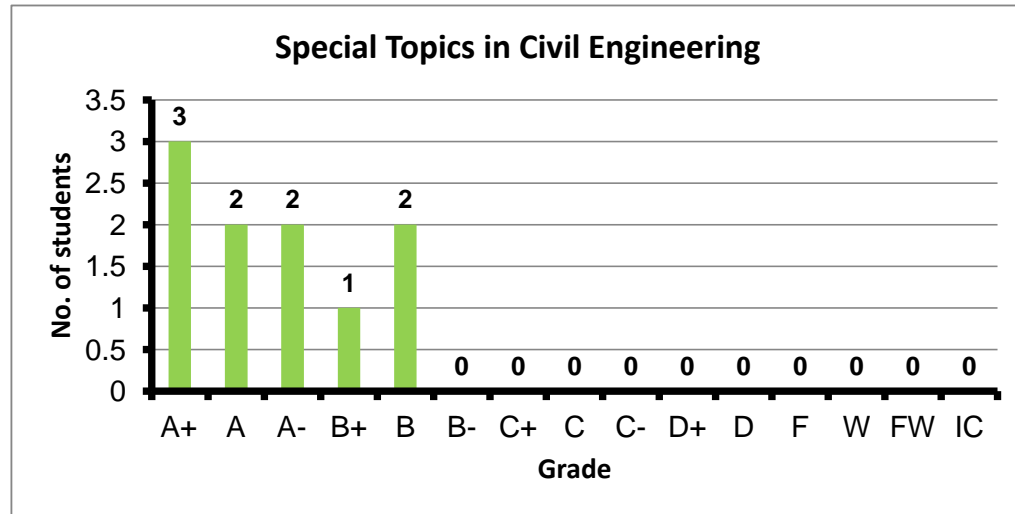
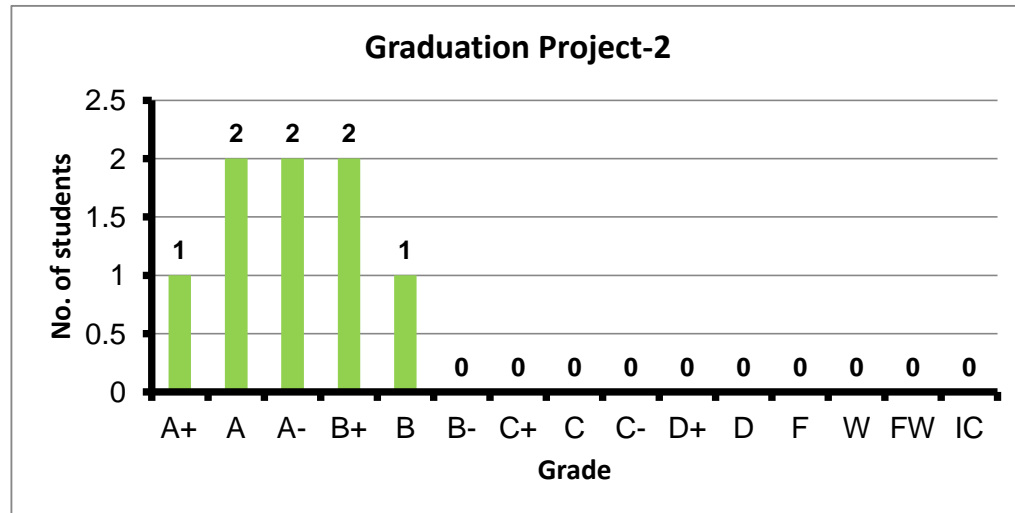


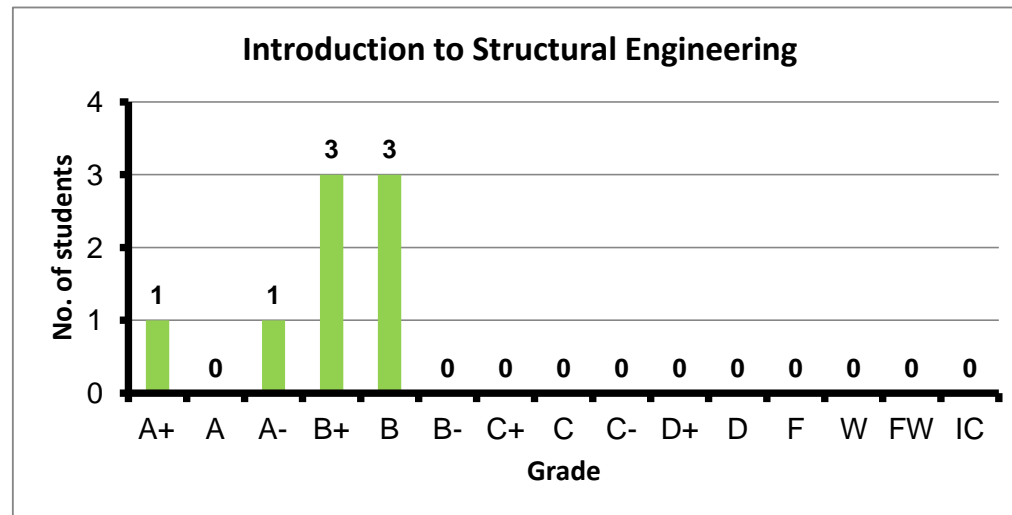
Course: Special Topics in Civil Engineering  
 Programs: STE  
 Code: CVEN361  
 Student: 10  
 A+ to C: 100%  
 C- to D: 0%  
 F: 0  
 W: 0  
 Average: 3.67  
 Std Dev: 3.89



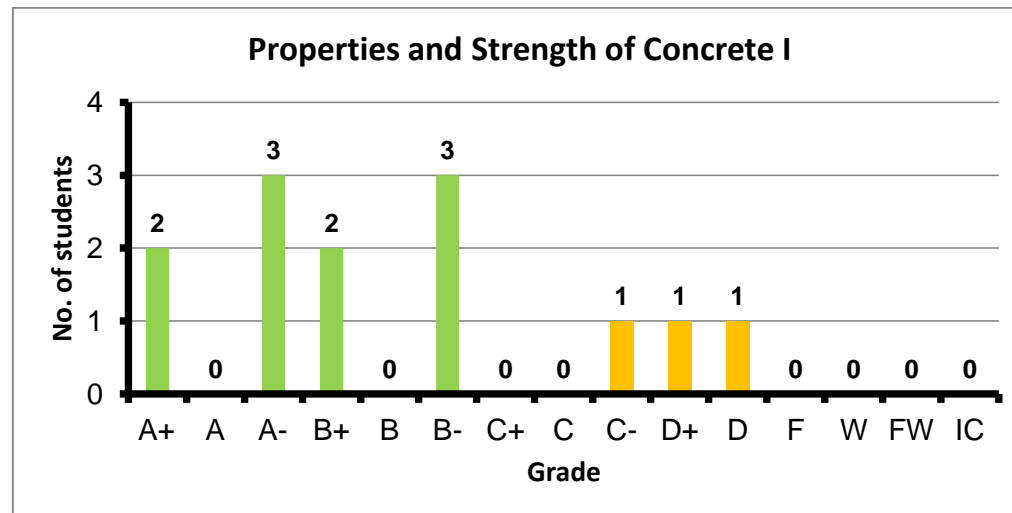
Course: Graduation Project-2  
 Programs: STE  
 Code: STEN481  
 Student: 8  
 A+ to C: 100%  
 C- to D: 0%  
 F: 0  
 W: 0  
 Average: 3.63  
 Std Dev: 3.89



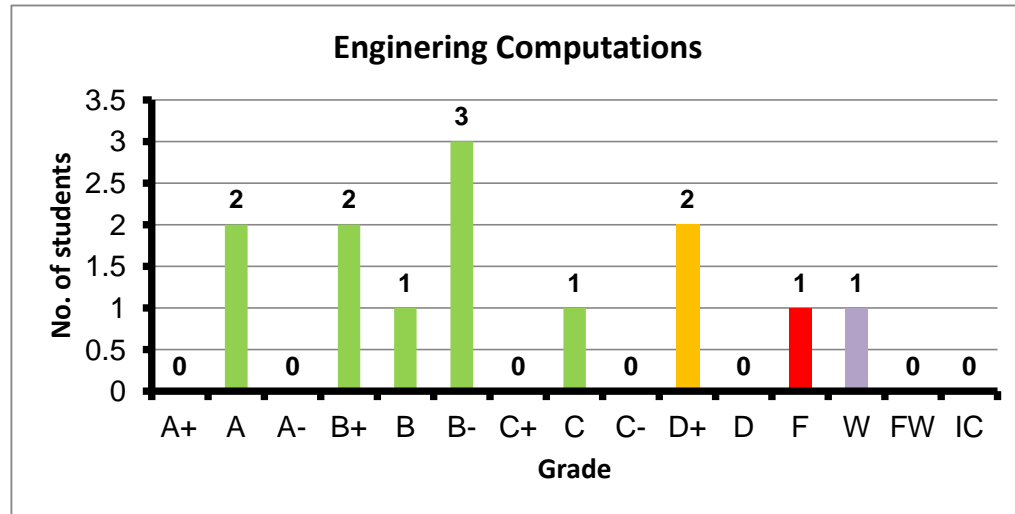
Course: Introduction to Structural Engineering  
 Programs: STE  
 Code: STRN100  
 Student: 8  
 A+ to C: 100%  
 C- to D: 0%  
 F: 0  
 W: 0  
 Average: 3.33  
 Std Dev: 3.57



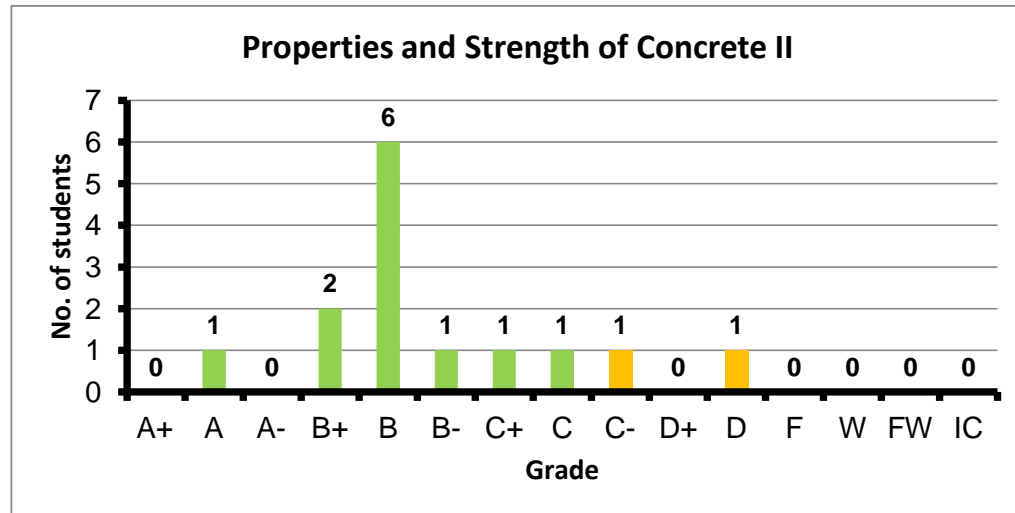
Course: Properties and Strength of Concrete I  
 Programs: STE  
 Code: STRN203  
 Student: 13  
 A+ to C: 77%  
 C- to D: 23%  
 F: 0  
 W: 0  
 Average: 2.92  
 Std Dev: 3.19



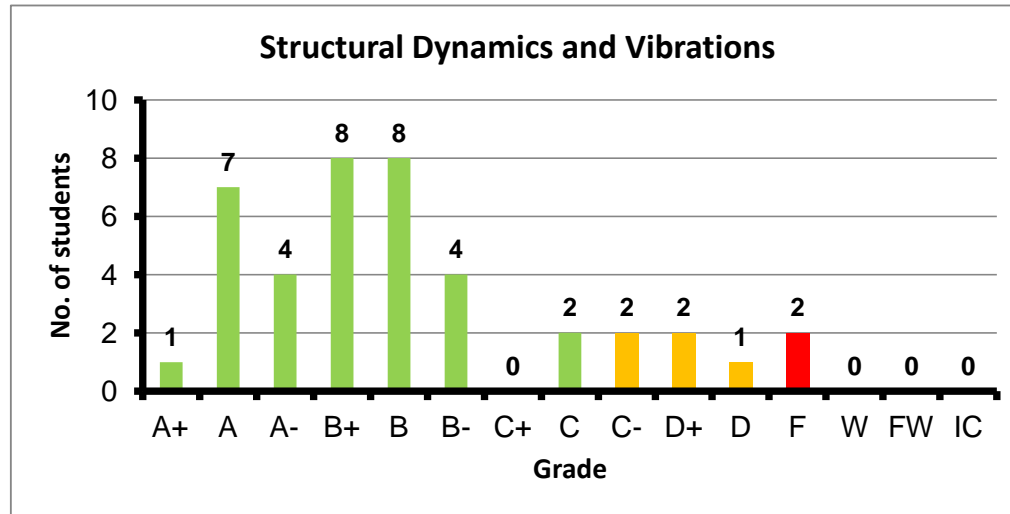
Course: Engineering Computations  
 Programs: STE  
 Code: STRN215  
 Student: 13  
 A+ to C: 69%  
 C- to D: 15%  
 F: 1  
 W: 1  
 Average: 2.54  
 Std Dev: 2.82



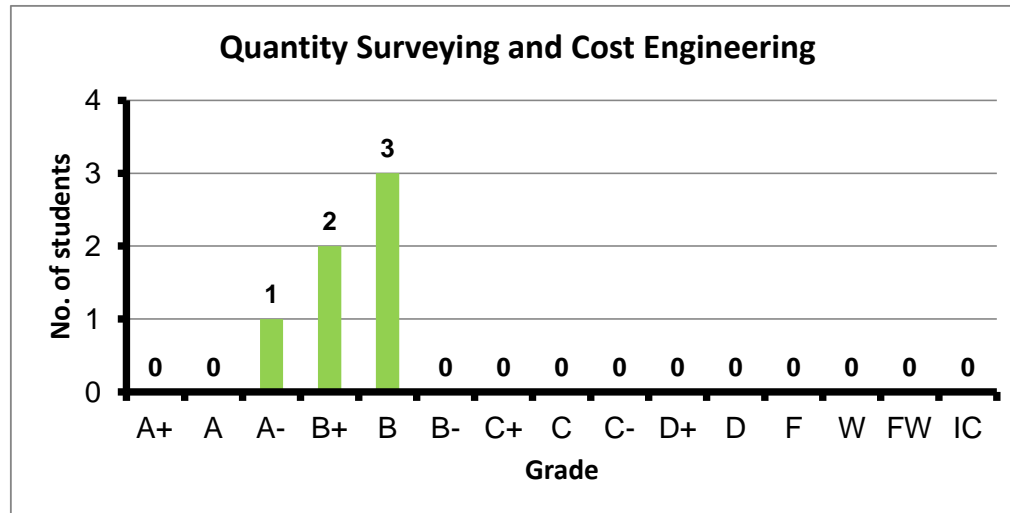
Course: Properties and Strength of Concrete II  
 Programs: STE  
 Code: STRN306  
 Student: 14  
 A+ to C: 86%  
 C- to D: 14%  
 F: 0  
 W: 0  
 Average: 2.74  
 Std Dev: 2.94



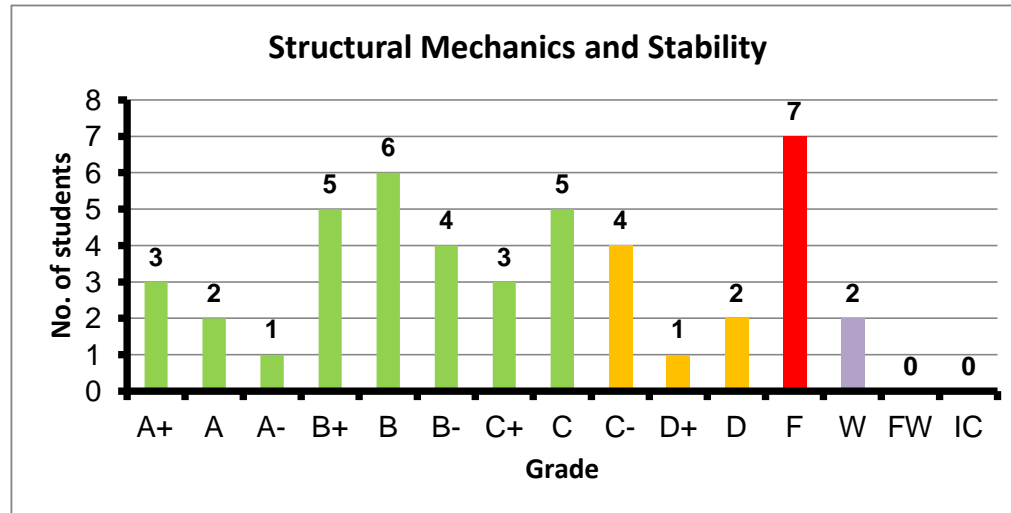
Course: Structural Dynamics and Vibrations  
 Programs: STE  
 Code: STRN408  
 Student: 41  
 A+ to C: 83%  
 C- to D: 12%  
 F: 2  
 W: 0  
 Average: 2.91  
 Std Dev: 3.12



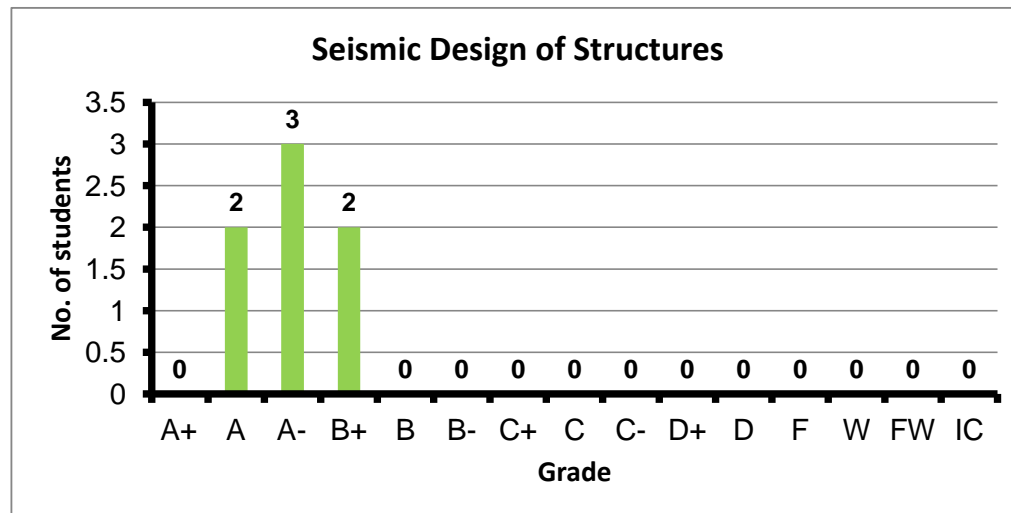
Course: Quantity Surveying and Cost Engineering  
 Programs: STE  
 Code: STRN419  
 Student: 6  
 A+ to C: 100%  
 C- to D: 0%  
 F: 0  
 W: 0  
 Average: 3.22  
 Std Dev: 3.53



Course: Structural Mechanics and Stability  
 Programs: STE  
 Code: STRN433  
 Student: 45  
 A+ to C: 64%  
 C- to D: 16%  
 F: 7  
 W: 2  
 Average: 2.23  
 Std Dev: 2.55



Course: Seismic Design of Structures  
 Programs: STE  
 Code: STRN437  
 Student: 7  
 A+ to C: 100%  
 C- to D: 0%  
 F: 0  
 W: 0  
 Average: 3.67  
 Std Dev: 3.98



Course: Special Topics in Structural Engineering  
Programs: STE  
Code: STRN461  
Student: 20  
A+ to C: 90%  
C- to D: 10%  
F: 0  
W: 0  
Average: 3.39  
Std Dev: 3.56

