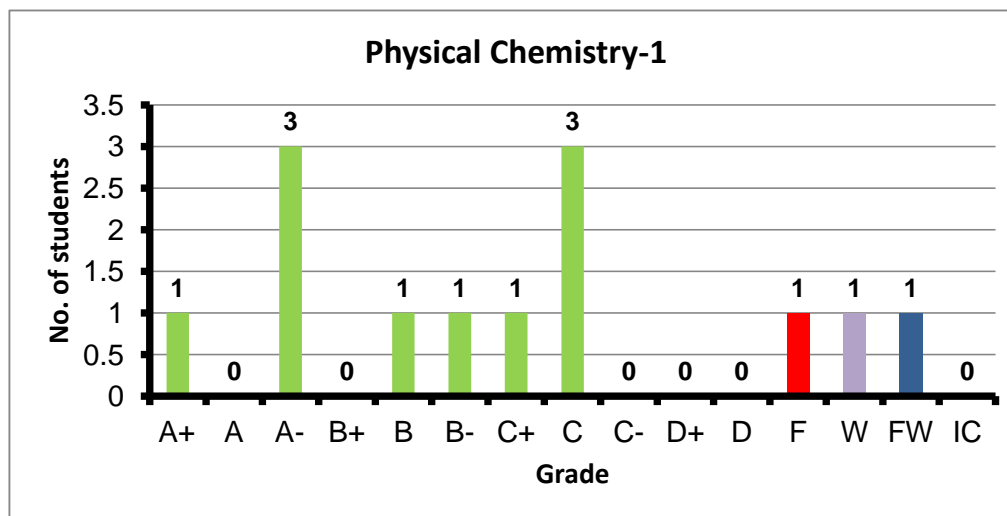
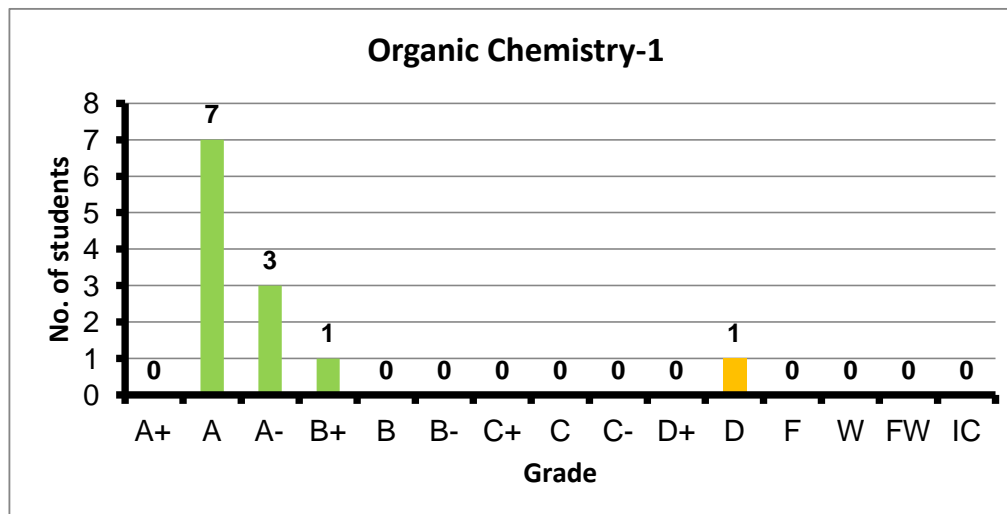


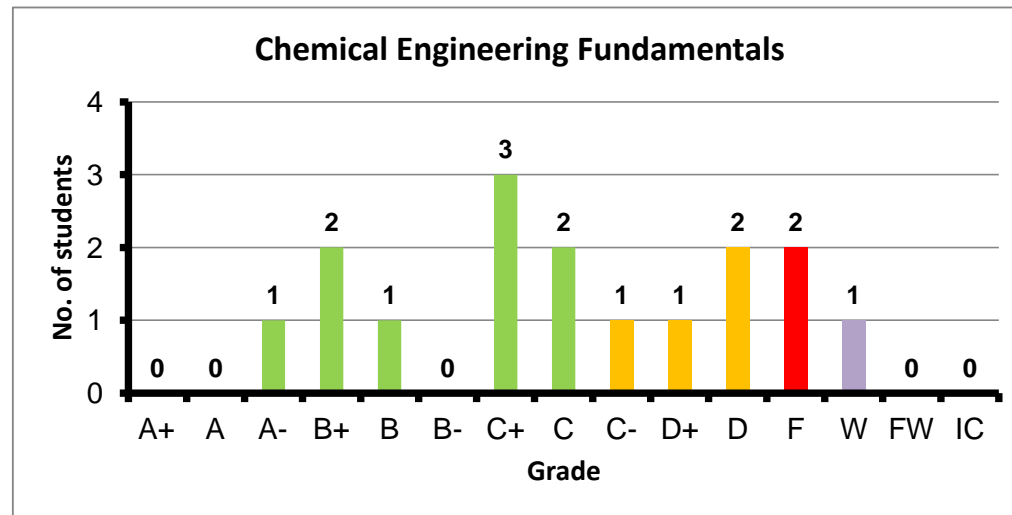
Course: Physical Chemistry-1  
 Programs: PPC  
 Code: CHEN101  
 Student: 13  
 A+ to C: 77%  
 C- to D: 0%  
 F: 1  
 W: 1  
 Average: 2.65  
 Std Dev: 2.94



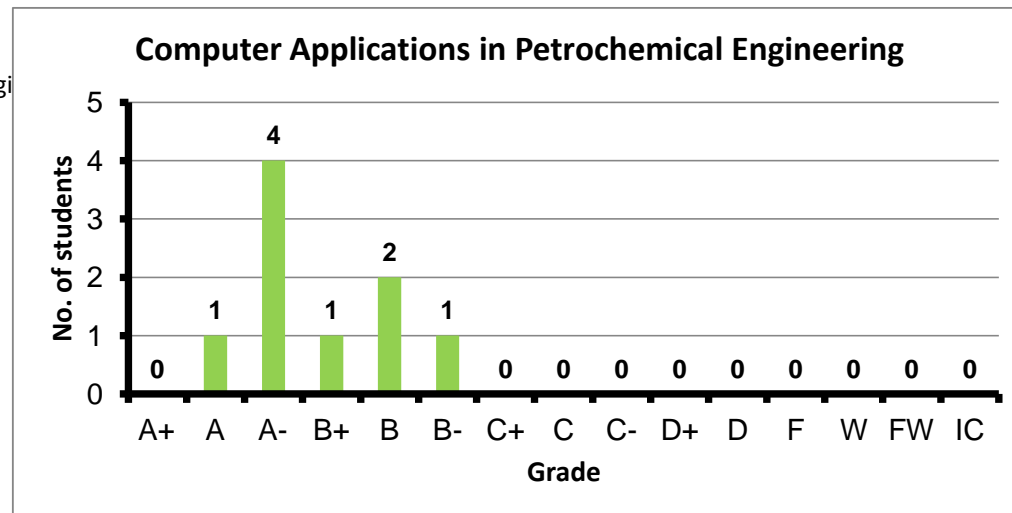
Course: Organic Chemistry-1  
 Programs: PPC  
 Code: CHEN102  
 Student: 12  
 A+ to C: 92%  
 C- to D: 8%  
 F: 0  
 W: 0  
 Average: 3.62  
 Std Dev: 3.87



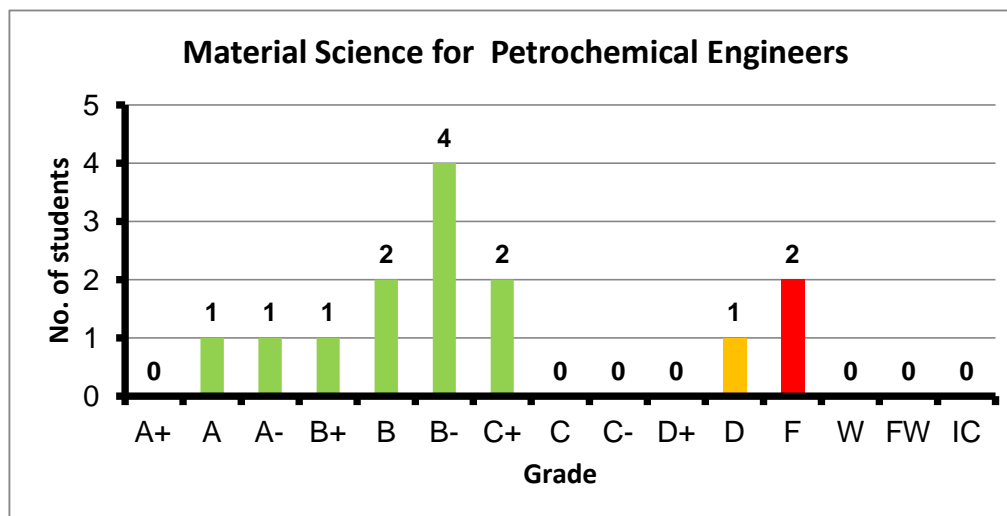
Course: Chemical Engineering Fundamentals  
 Programs: PPC  
 Code: CHEN103  
 Student: 16  
 A+ to C: 56%  
 C- to D: 25%  
 F: 2  
 W: 1  
 Average: 1.95  
 Std Dev: 2.26



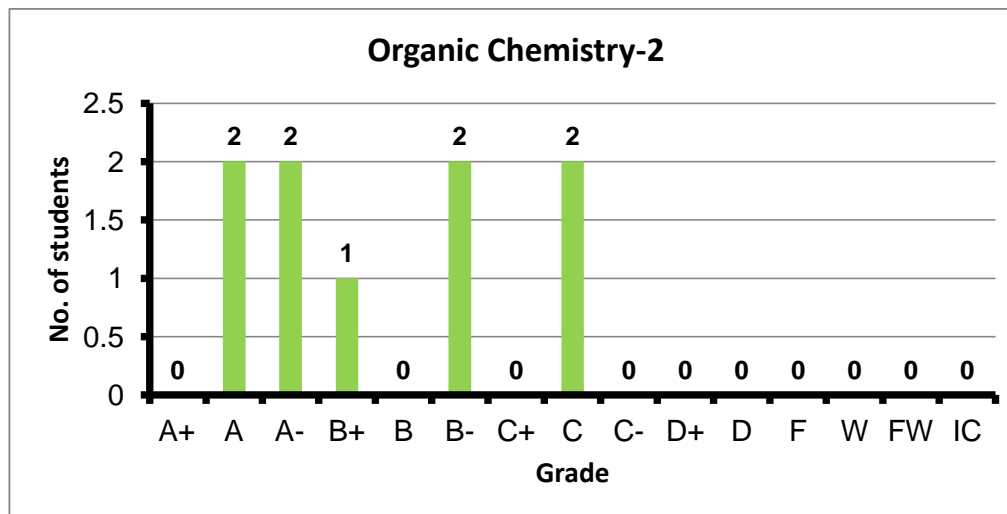
Course: Computer Applications in Petrochemical Engi  
 Programs: PPC  
 Code: CHEN106  
 Student: 9  
 A+ to C: 100%  
 C- to D: 0%  
 F: 0  
 W: 0  
 Average: 3.42  
 Std Dev: 3.66



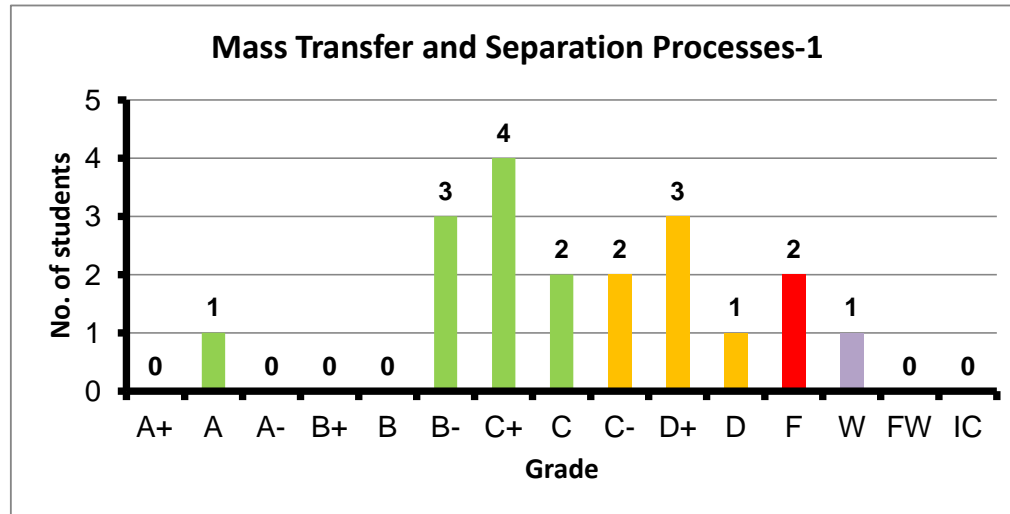
Course: Material Science for Petrochemical Engineers  
 Programs: PPC  
 Code: CHEN107  
 Student: 14  
 A+ to C: 79%  
 C- to D: 7%  
 F: 2  
 W: 0  
 Average: 2.39  
 Std Dev: 2.76



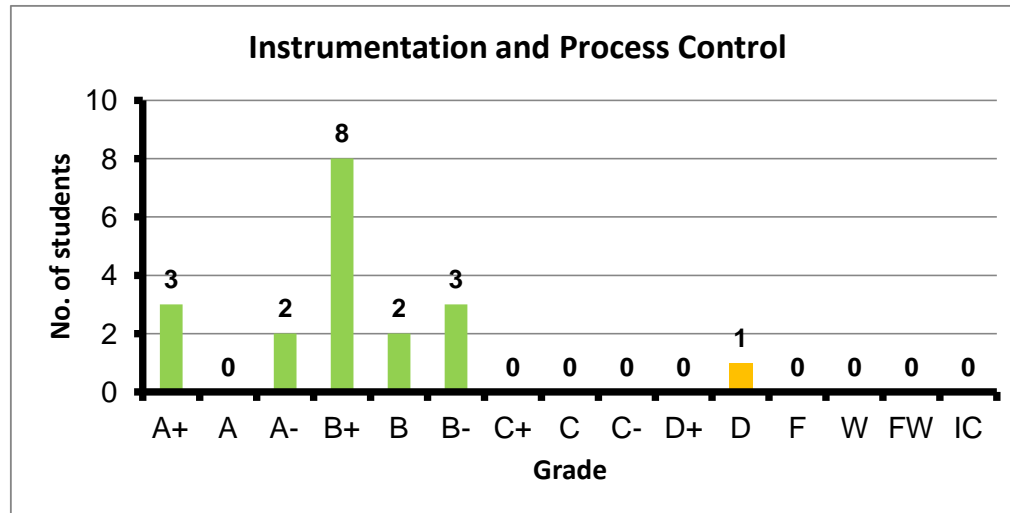
Course: Organic Chemistry-2  
 Programs: PPC  
 Code: CHEN201  
 Student: 9  
 A+ to C: 100%  
 C- to D: 0%  
 F: 0  
 W: 0  
 Average: 3.12  
 Std Dev: 3.41



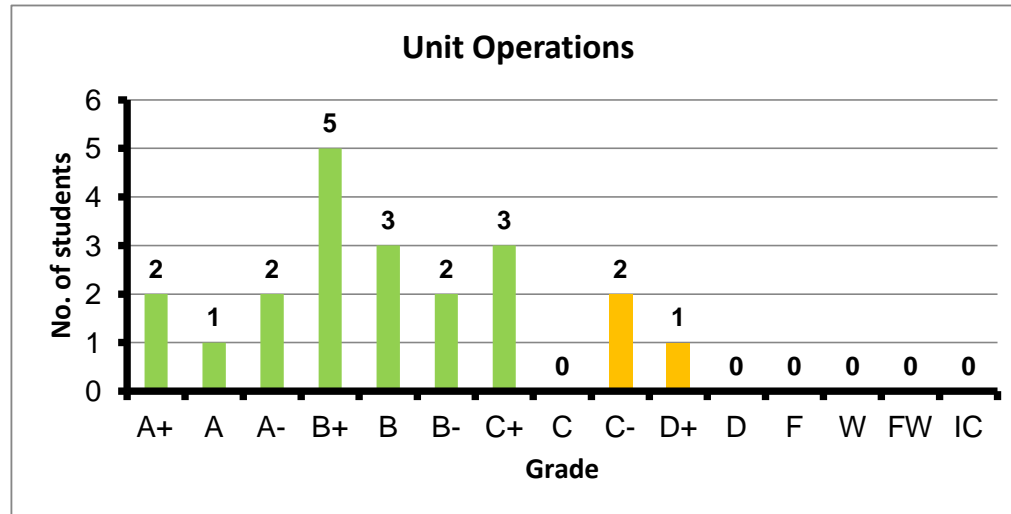
Course: Mass Transfer and Separation Processes-1  
 Programs: PPC  
 Code: CHEN301  
 Student: 19  
 A+ to C: 53%  
 C- to D: 32%  
 F: 2  
 W: 1  
 Average: 1.88  
 Std Dev: 2.11



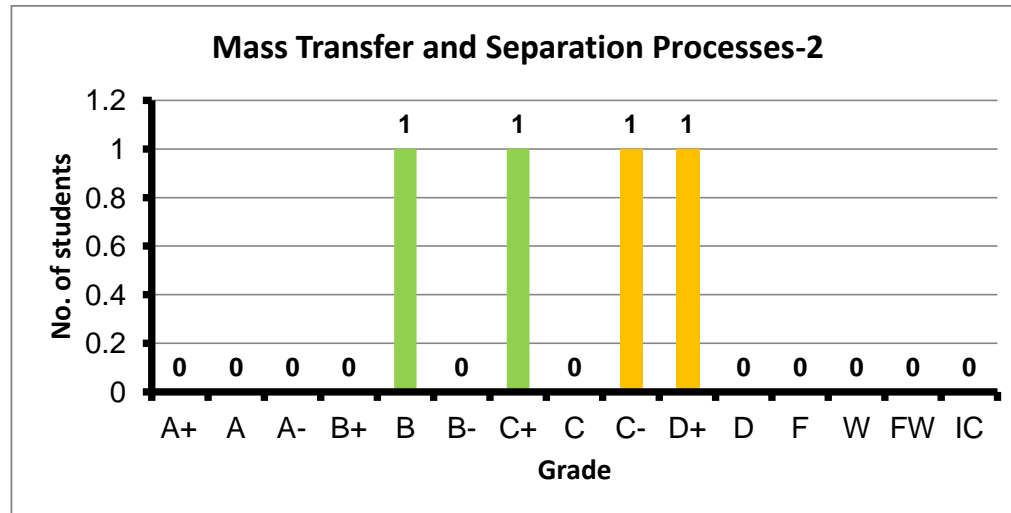
Course: Instrumentation and Process Control  
 Programs: PPC  
 Code: CHEN302  
 Student: 19  
 A+ to C: 95%  
 C- to D: 5%  
 F: 0  
 W: 0  
 Average: 3.21  
 Std Dev: 3.36



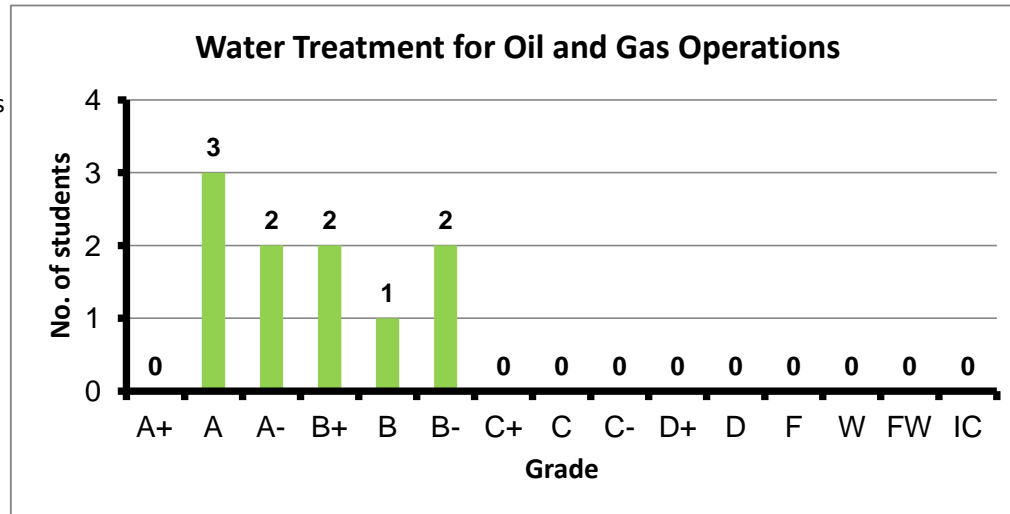
Course: Unit Operations  
 Programs: PPC  
 Code: CHEN304  
 Student: 21  
 A+ to C: 86%  
 C- to D: 14%  
 F: 0  
 W: 0  
 Average: 2.95  
 Std Dev: 3.12



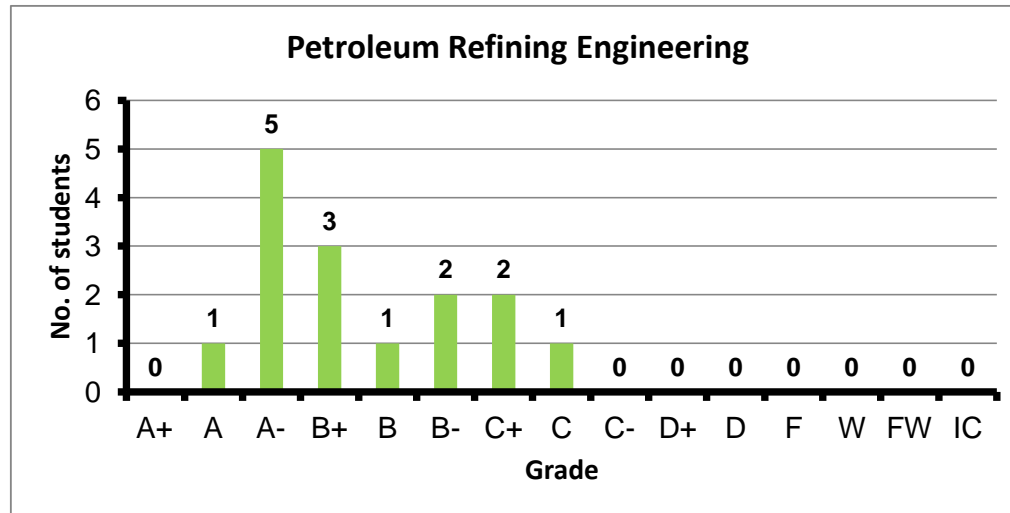
Course: Mass Transfer and Separation Processes-2  
 Programs: PPC  
 Code: CHEN307  
 Student: 4  
 A+ to C: 50%  
 C- to D: 50%  
 F: 0  
 W: 0  
 Average: 2.10  
 Std Dev: 2.51



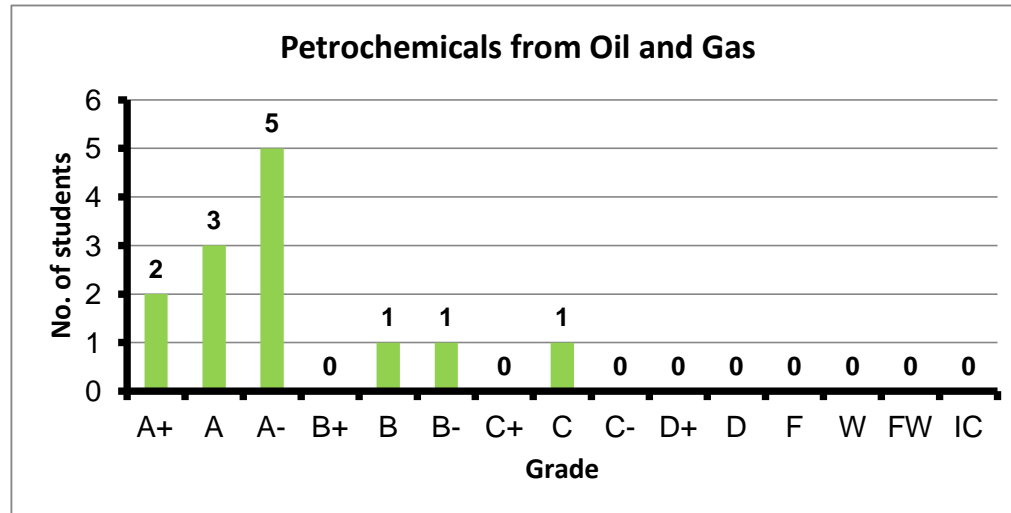
Course: Water Treatment for Oil and Gas Operations  
 Programs: PPC  
 Code: CHEN310  
 Student: 10  
 A+ to C: 100%  
 C- to D: 0%  
 F: 0  
 W: 0  
 Average: 3.44  
 Std Dev: 3.66



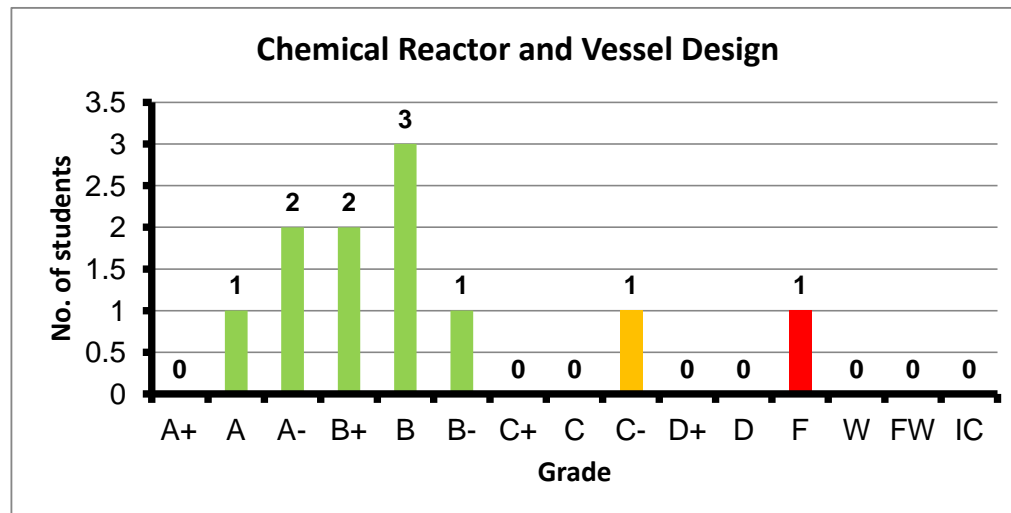
Course: Petroleum Refining Engineering  
 Programs: PPC  
 Code: CHEN401  
 Student: 15  
 A+ to C: 100%  
 C- to D: 0%  
 F: 0  
 W: 0  
 Average: 3.16  
 Std Dev: 3.33



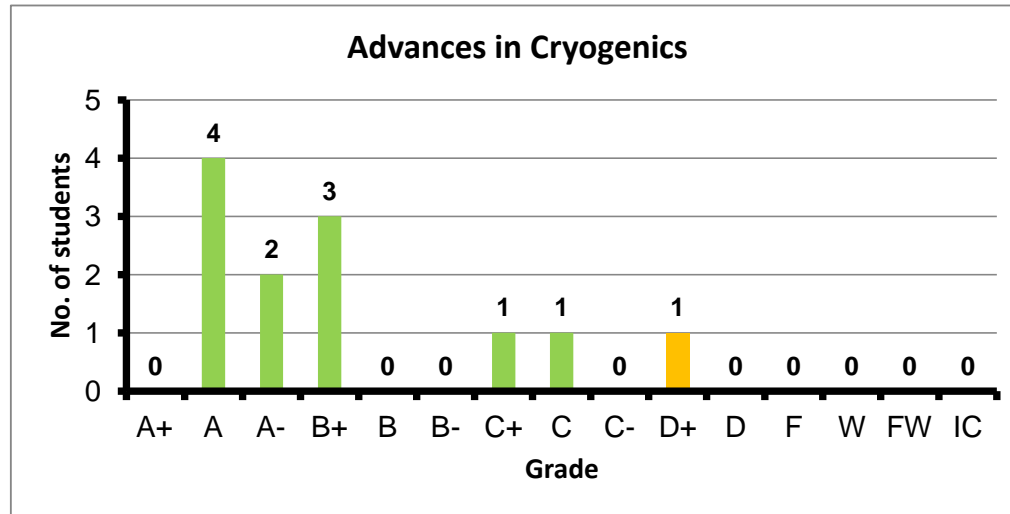
Course: Petrochemicals from Oil and Gas  
 Programs: PPC  
 Code: CHEN402  
 Student: 13  
 A+ to C: 100%  
 C- to D: 0%  
 F: 0  
 W: 0  
 Average: 3.55  
 Std Dev: 3.75



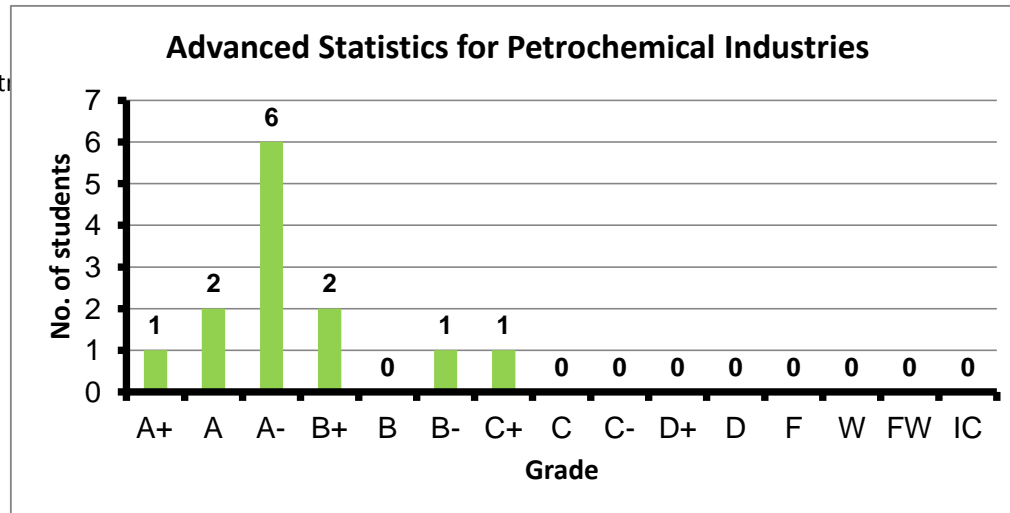
Course: Chemical Reactor and Vessel Design  
 Programs: PPC  
 Code: CHEN403  
 Student: 11  
 A+ to C: 82%  
 C- to D: 9%  
 F: 1  
 W: 0  
 Average: 2.85  
 Std Dev: 3.20



Course: Advances in Cryogenics  
 Programs: PPC  
 Code: CHEN404  
 Student: 12  
 A+ to C: 92%  
 C- to D: 8%  
 F: 0  
 W: 0  
 Average: 3.25  
 Std Dev: 3.50

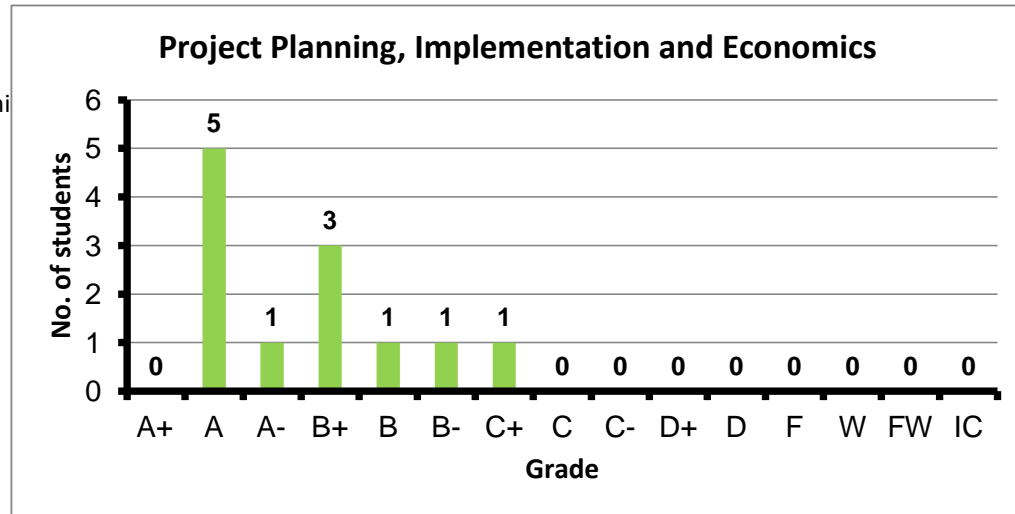


Course: Advanced Statistics for Petrochemical Industries  
 Programs: PPC  
 Code: CHEN406  
 Student: 13  
 A+ to C: 100%  
 C- to D: 0%  
 F: 0  
 W: 0  
 Average: 3.52  
 Std Dev: 3.70

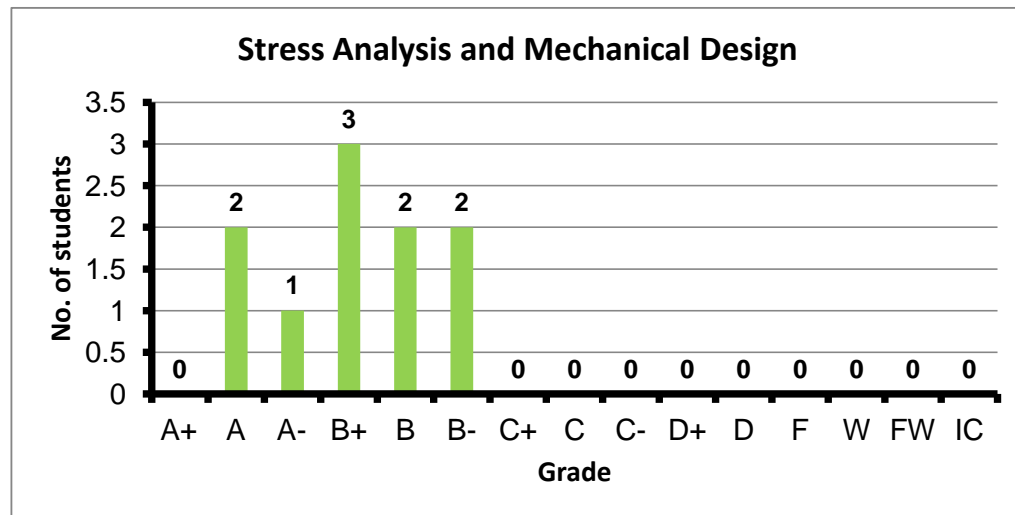




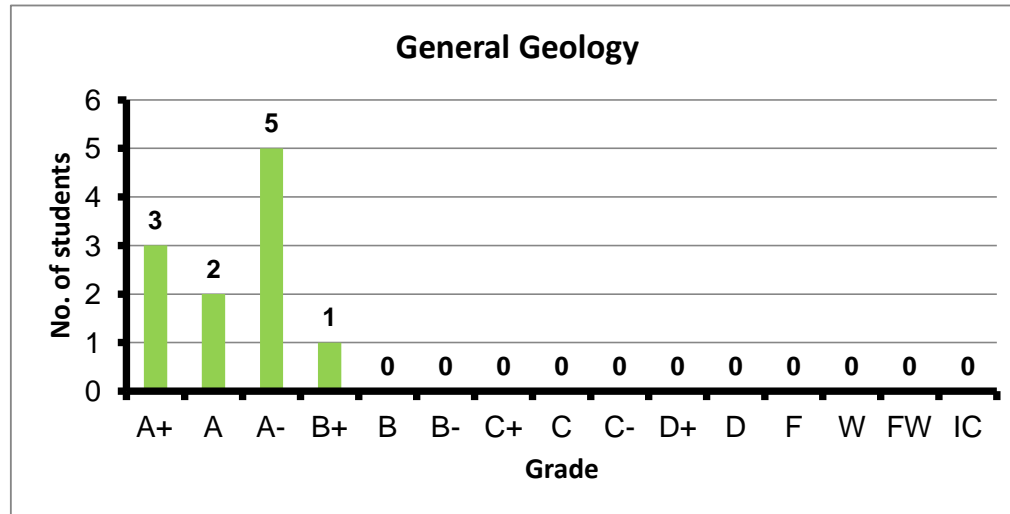
Course: Project Planning, Implementation and Economics  
 Programs: PPC  
 Code: GENN401  
 Student: 12  
 A+ to C: 100%  
 C- to D: 0%  
 F: 0  
 W: 0  
 Average: 3.47  
 Std Dev: 3.67



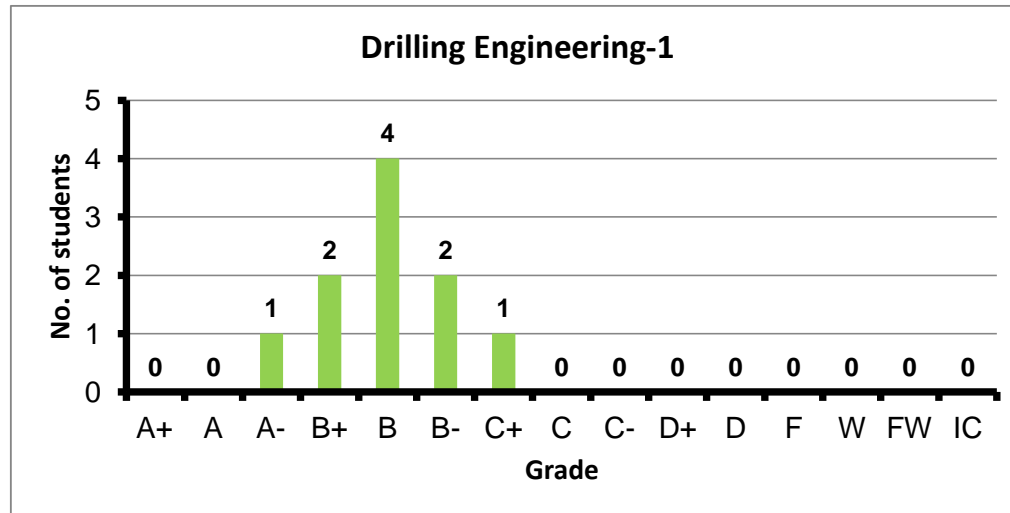
Course: Stress Analysis and Mechanical Design  
 Programs: PPC  
 Code: MDPN201  
 Student: 10  
 A+ to C: 100%  
 C- to D: 0%  
 F: 0  
 W: 0  
 Average: 3.30  
 Std Dev: 3.51



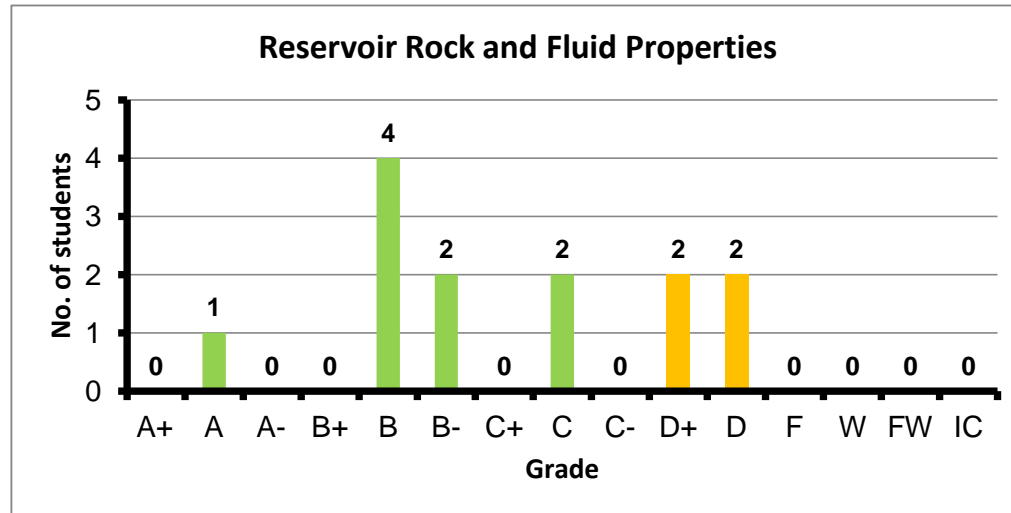
Course: General Geology  
 Programs: PPC  
 Code: PEN102  
 Student: 11  
 A+ to C: 100%  
 C- to D: 0%  
 F: 0  
 W: 0  
 Average: 3.80  
 Std Dev: 3.99



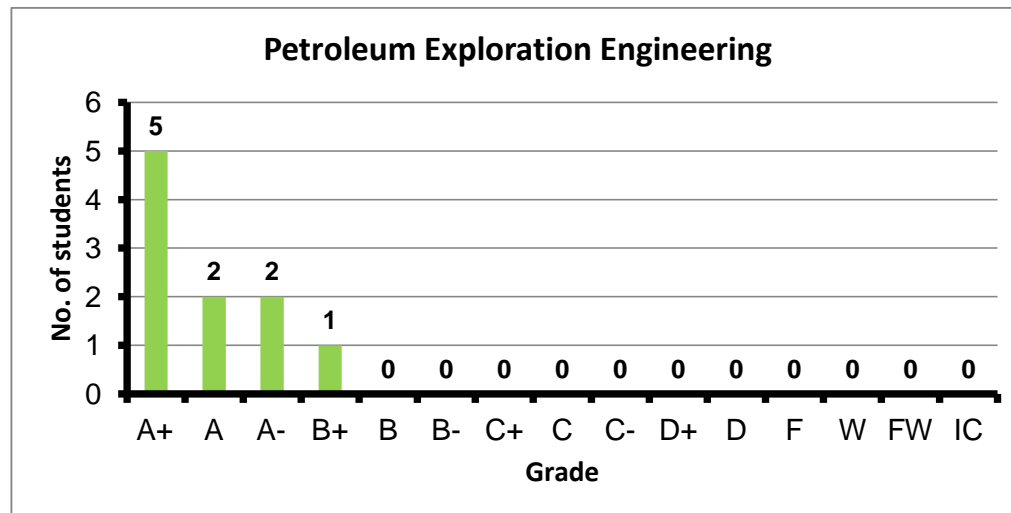
Course: Drilling Engineering-1  
 Programs: PPC  
 Code: PEN201  
 Student: 10  
 A+ to C: 100%  
 C- to D: 0%  
 F: 0  
 W: 0  
 Average: 3.00  
 Std Dev: 3.19



Course: Reservoir Rock and Fluid Properties  
 Programs: PPC  
 Code: PEN202  
 Student: 13  
 A+ to C: 69%  
 C- to D: 31%  
 F: 0  
 W: 0  
 Average: 2.32  
 Std Dev: 2.58



Course: Petroleum Exploration Engineering  
 Programs: PPC  
 Code: PEN301  
 Student: 10  
 A+ to C: 100%  
 C- to D: 0%  
 F: 0  
 W: 0  
 Average: 3.87  
 Std Dev: 4.09



Course: Reservoir Engineering-1  
Programs: PPC  
Code: PEN302  
Student: 20  
A+ to C: 90%  
C- to D: 10%  
F: 0  
W: 0  
Average: 2.87  
Std Dev: 3.05

