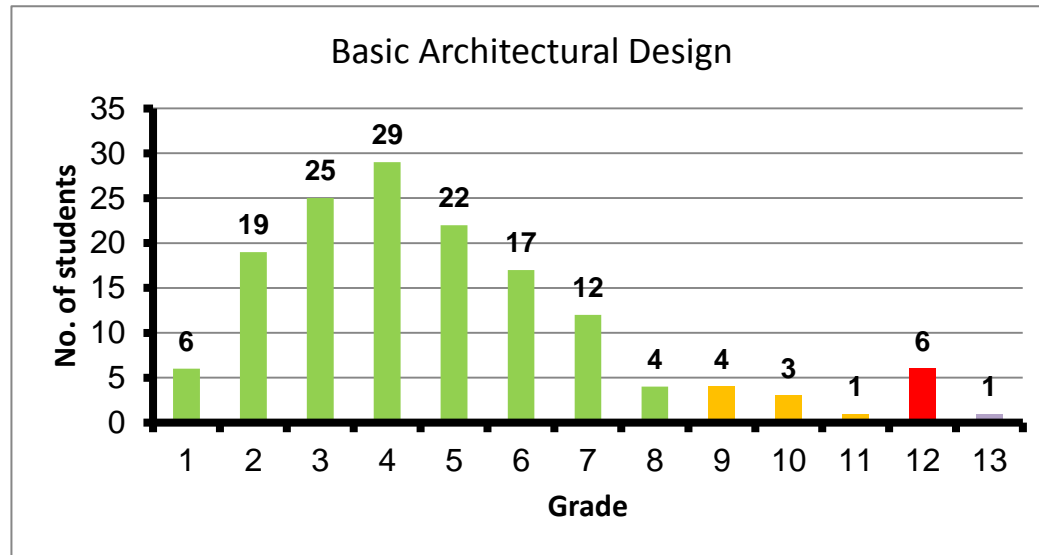
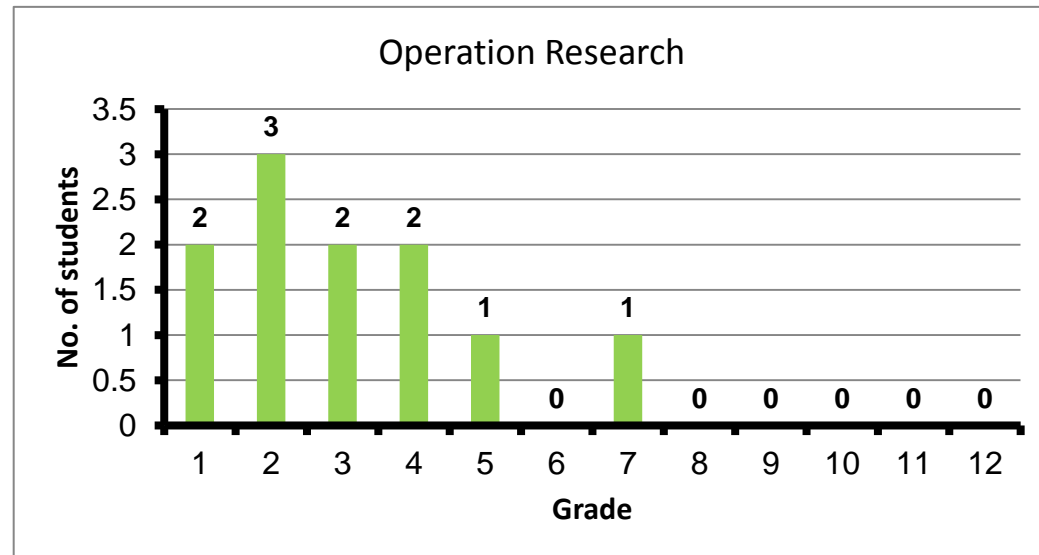


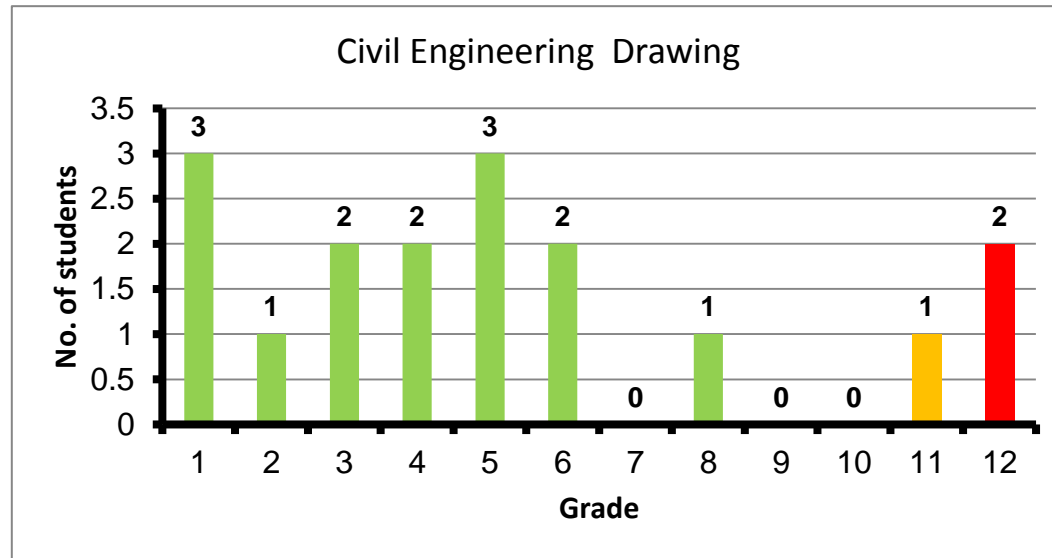
Course: Basic Architectural Design
 Programs: Civil
 Code: ARCN110
 Student: 149
 A+ to C: 134
 C- to D: 8
 F: 6
 W: 1
 Average: 3.03
 Std Dev: 0.92



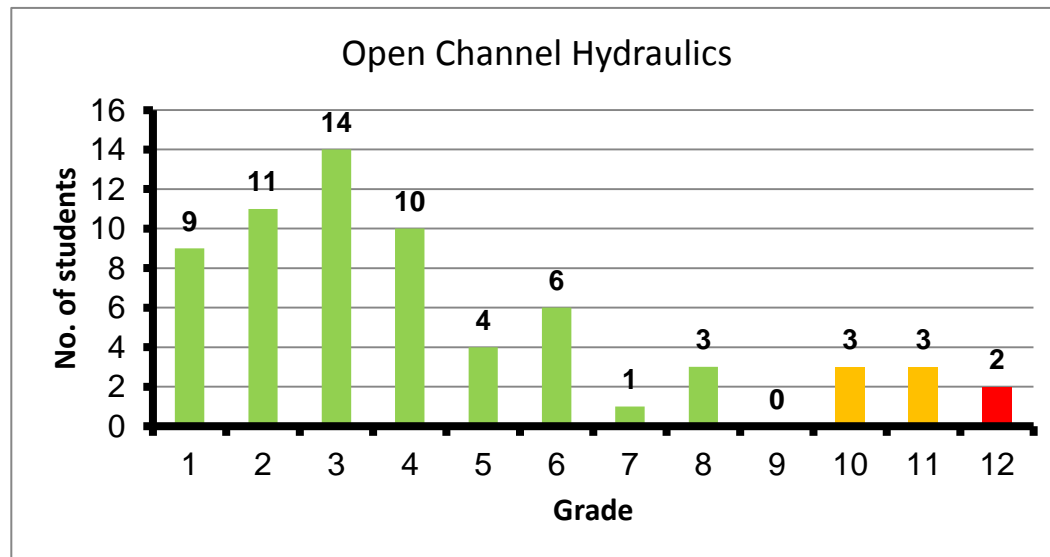
Course: Operation Research
 Programs: Civil
 Code: GENN341
 Student: 15
 A+ to C: 15
 C- to D: 0
 F: 0
 W: 0
 Average: 3.49
 Std Dev: 0.60



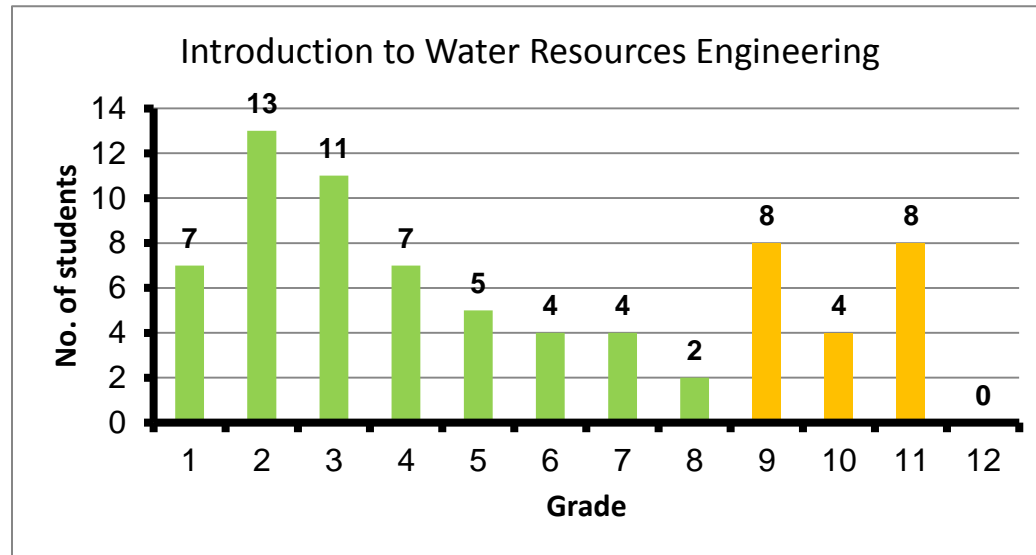
Course: Civil Engineering Drawing
 Programs: Civil
 Code: IHDN104
 Student: 29
 A+ to C: 25
 C- to D: 1
 F: 1
 W: 2
 Average: 3.36
 Std Dev: 0.96



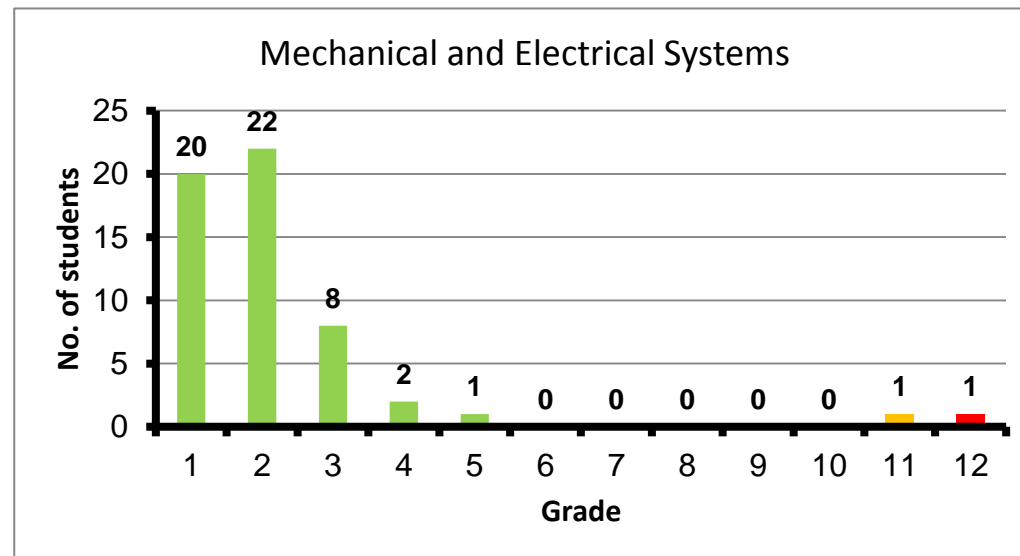
Course: Open Channel Hydraulics
 Programs: Civil
 Code: IHDN202
 Student: 74
 A+ to C: 63
 C- to D: 6
 F: 3
 W: 2
 Average: 3.05
 Std Dev: 1.01



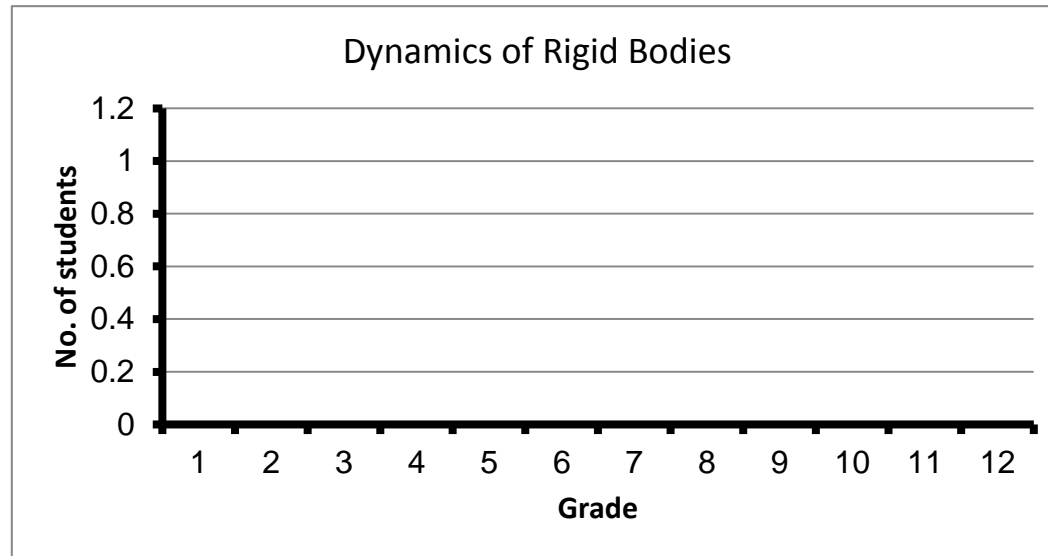
Course: Introduction to Water Resources Engineering
 Programs: Civil
 Code: IHDN301
 Student: 83
 A+ to C: 61
 C- to D: 14
 F: 8
 W: 0
 Average: 2.68
 Std Dev: 1.29



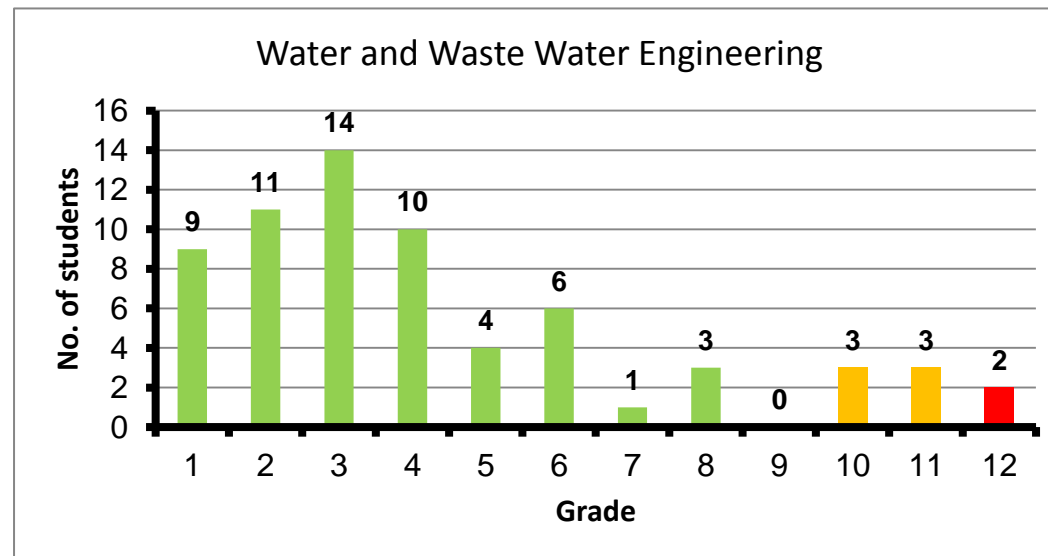
Course: Mechanical and Electrical Systems
 Programs: Civil
 Code: INTN203
 Student: 102
 A+ to C: 100
 C- to D: 0
 F: 1
 W: 1
 Average: 3.81
 Std Dev: 0.47



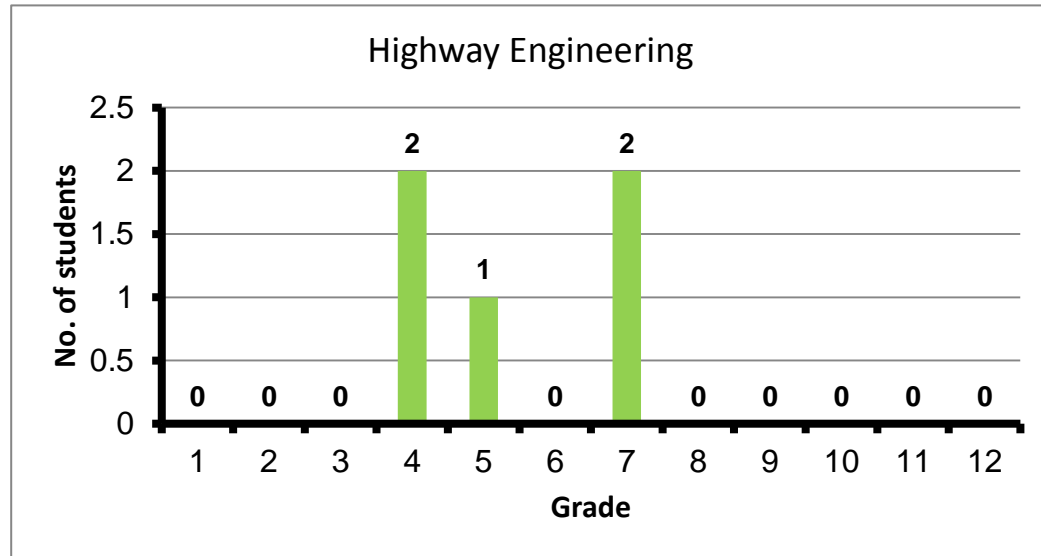
Course: Dynamics of Rigid Bodies
 Programs: Civil
 Code: MECN101
 Student: 13
 A+ to C: 0
 C- to D: 0
 F: 0
 W: 0
 Average: #DIV/0!
 Std Dev: #DIV/0!



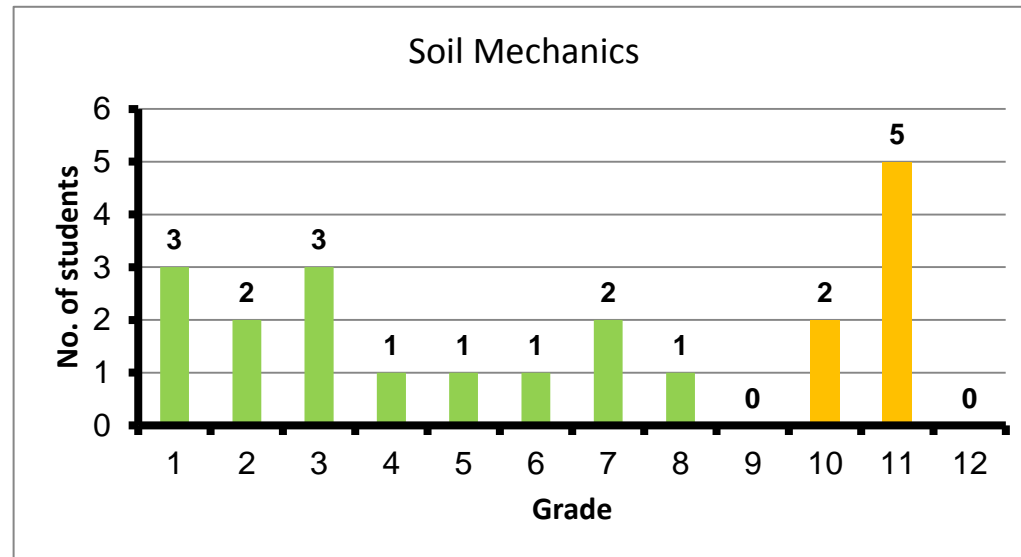
Course: Water and Waste Water Engineering
 Programs: Civil
 Code: PBWN201
 Student: 69
 A+ to C: 53
 C- to D: 12
 F: 4
 W: 0
 Average: 2.84
 Std Dev: 1.17



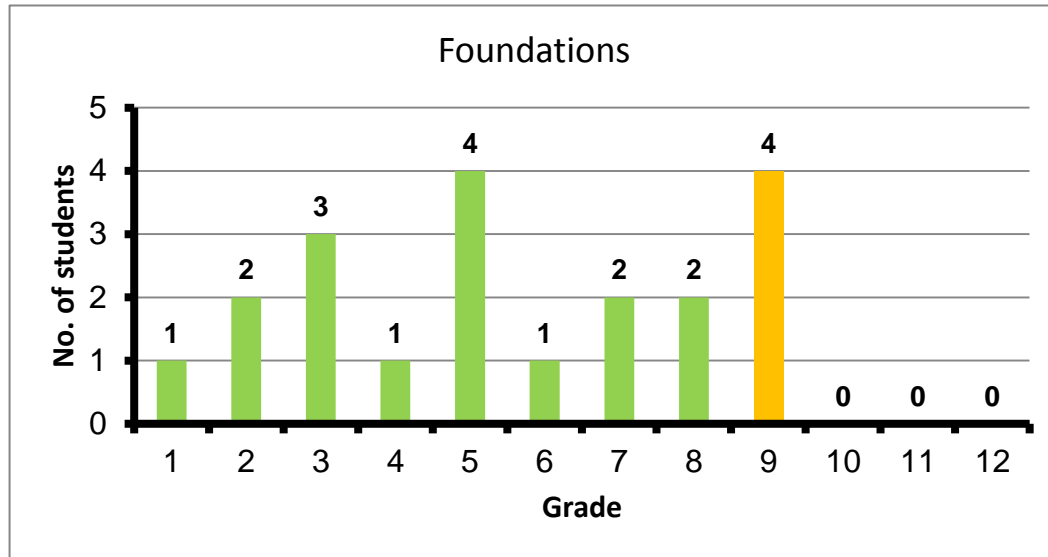
Course: Highway Engineering
 Programs: Civil
 Code: PBWN301
 Student: 7
 A+ to C: 7
 C- to D: 0
 F: 0
 W: 0
 Average: 2.96
 Std Dev: 0.82



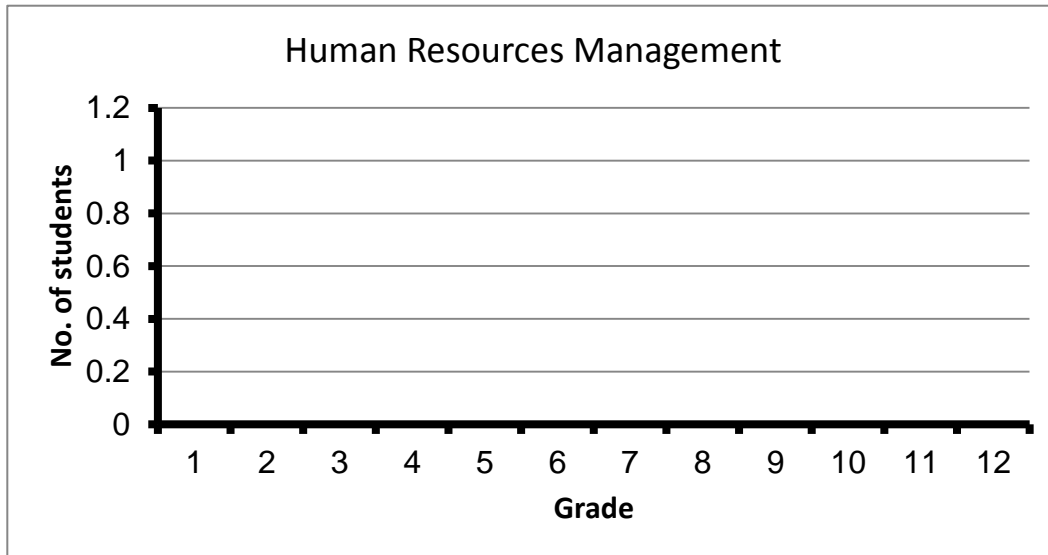
Course: Soil Mechanics
 Programs: Civil
 Code: PBWN302
 Student: 21
 A+ to C: 13
 C- to D: 3
 F: 5
 W: 0
 Average: 2.14
 Std Dev: 1.52



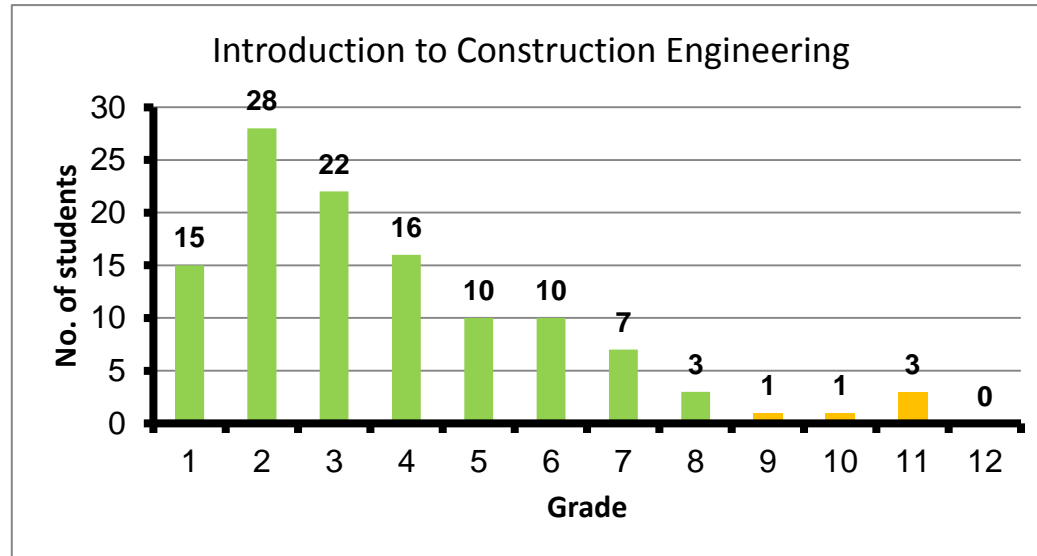
Course: Foundations
 Programs: Civil
 Code: PBWN303
 Student: 20
 A+ to C: 14
 C- to D: 6
 F: 0
 W: 0
 Average: 2.52
 Std Dev: 0.89



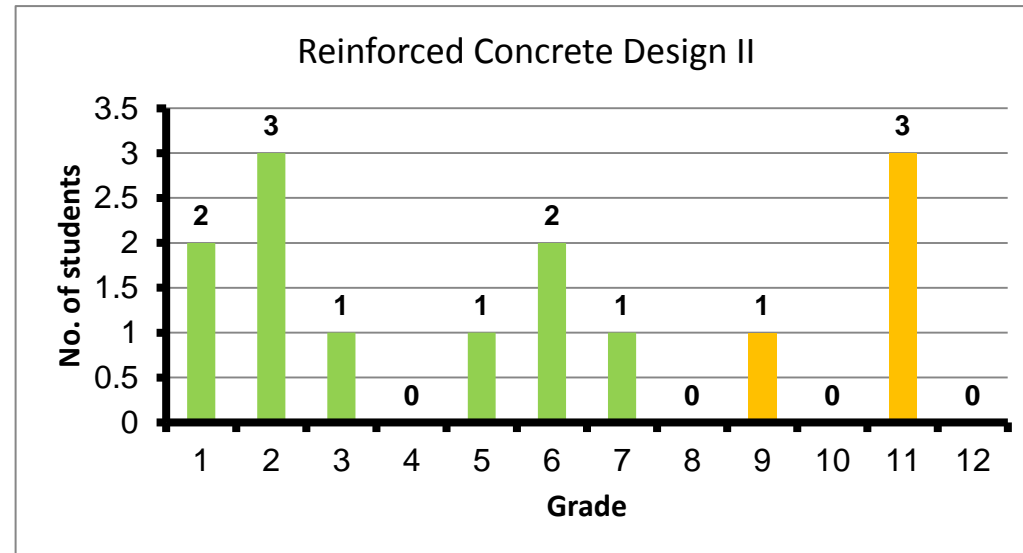
Course: Human Resources Management
 Programs: Civil
 Code: STRN105
 Student: 104
 A+ to C: 0
 C- to D: 0
 F: 0
 W: 0
 Average: #DIV/0!
 Std Dev: #DIV/0!



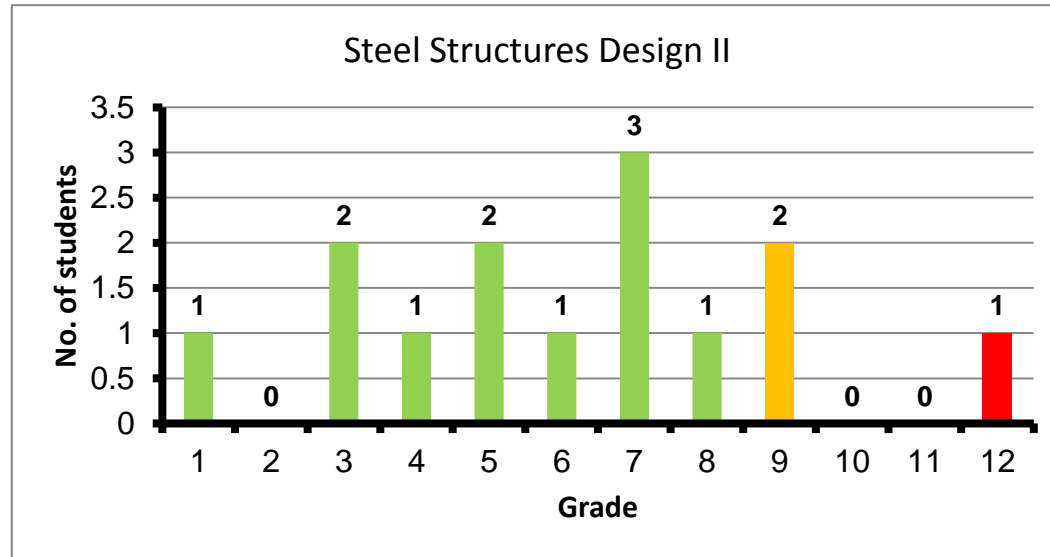
Course: Introduction to Construction Engineering
 Programs: Civil
 Code: STRN122
 Student: 132
 A+ to C: 124
 C- to D: 5
 F: 3
 W: 0
 Average: 3.18
 Std Dev: 0.85



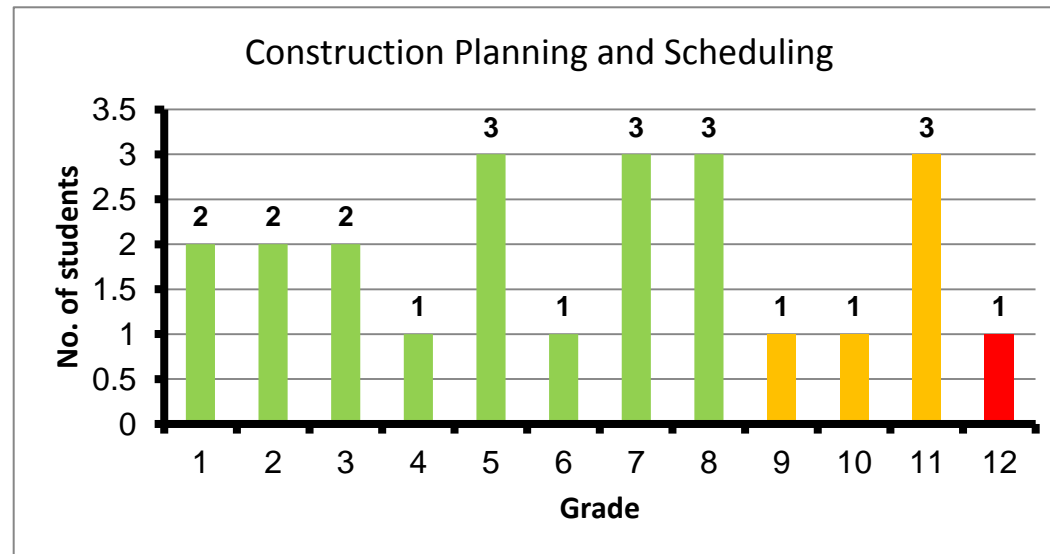
Course: Reinforced Concrete Design II
 Programs: Civil
 Code: STRN303
 Student: 15
 A+ to C: 11
 C- to D: 1
 F: 3
 W: 0
 Average: 2.47
 Std Dev: 1.52



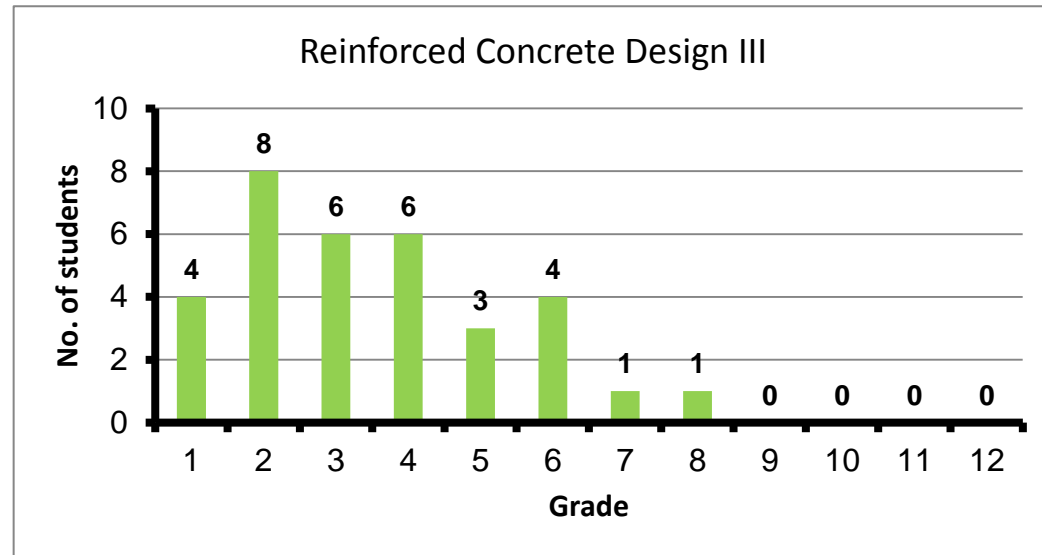
Course: Steel Structures Design II
 Programs: Civil
 Code: STRN304
 Student: 15
 A+ to C: 11
 C- to D: 3
 F: 0
 W: 1
 Average: 2.56
 Std Dev: 0.89



Course: Construction Planning and Scheduling
 Programs: Civil
 Code: STRN322
 Student: 23
 A+ to C: 14
 C- to D: 5
 F: 3
 W: 1
 Average: 2.22
 Std Dev: 1.24



Course: Reinforced Concrete Design III
 Programs: Civil
 Code: STRN441
 Student: 35
 A+ to C: 34
 C- to D: 1
 F: 0
 W: 0
 Average: 3.21
 Std Dev: 0.64



Course: Temporary Structures and Form Work Design
 Programs: Civil
 Code: STRN443
 Student: 4
 A+ to C: 2
 C- to D: 1
 F: 1
 W: 0
 Average: 1.50
 Std Dev: 1.03

