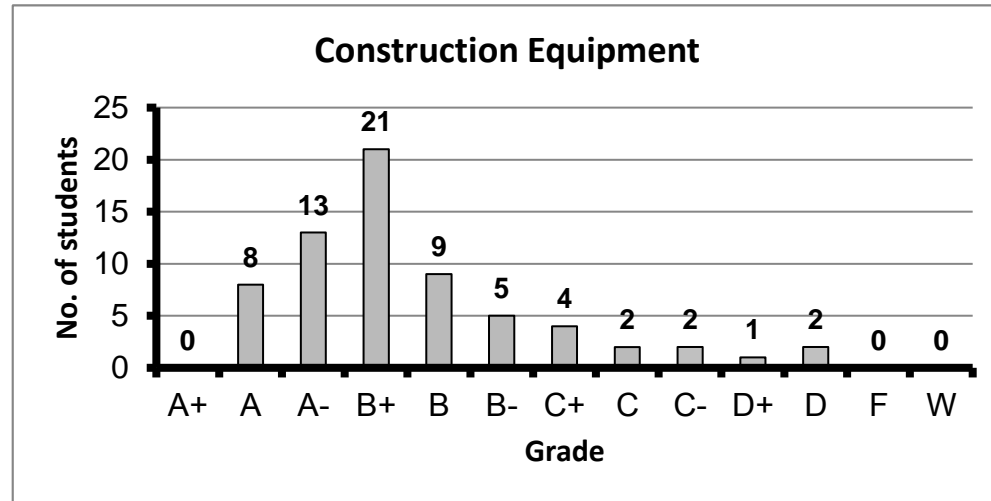
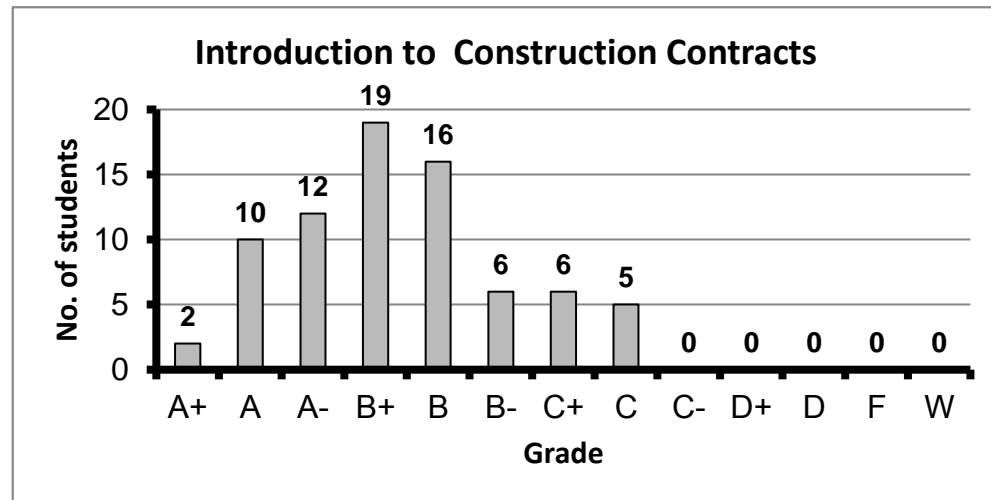


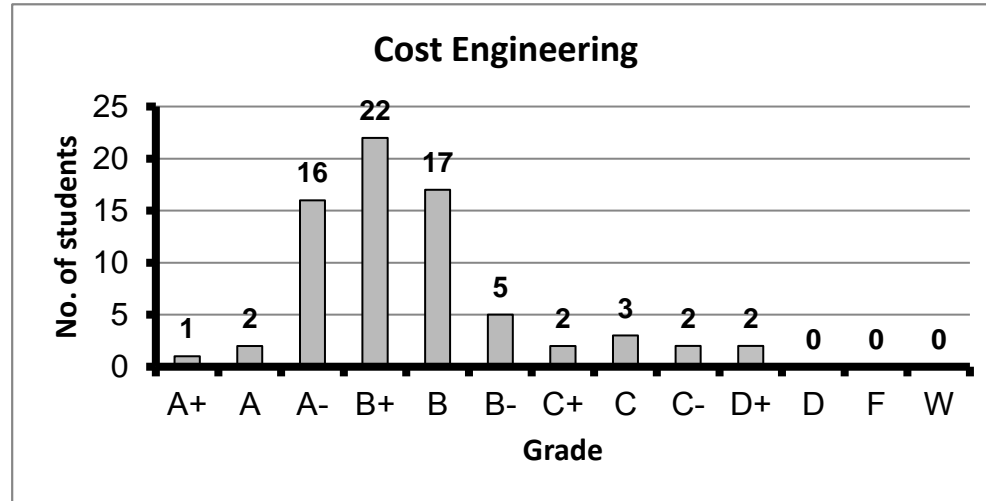
Course: Construction Equipment
Programs: CEM
Code: STRN325
Student: 67
A+ to C: 93%
C- to D: 7%
F: 0
W: 0
Average: 3.13
Std Dev: 0.72



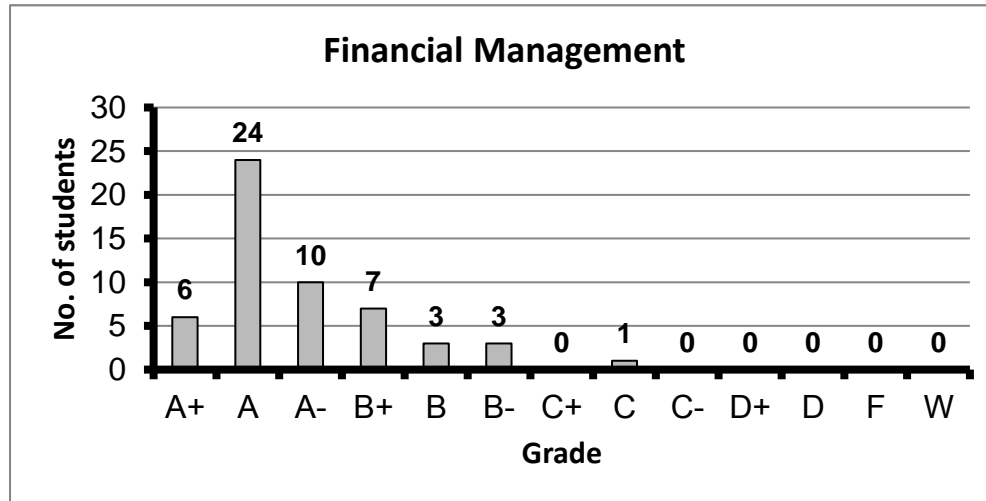
Course: Introduction to Construction Contracts
Programs: CEM
Code: STRN420
Student: 76
A+ to C: 100%
C- to D: 0%
F: 0
W: 0
Average: 3.20
Std Dev: 0.58



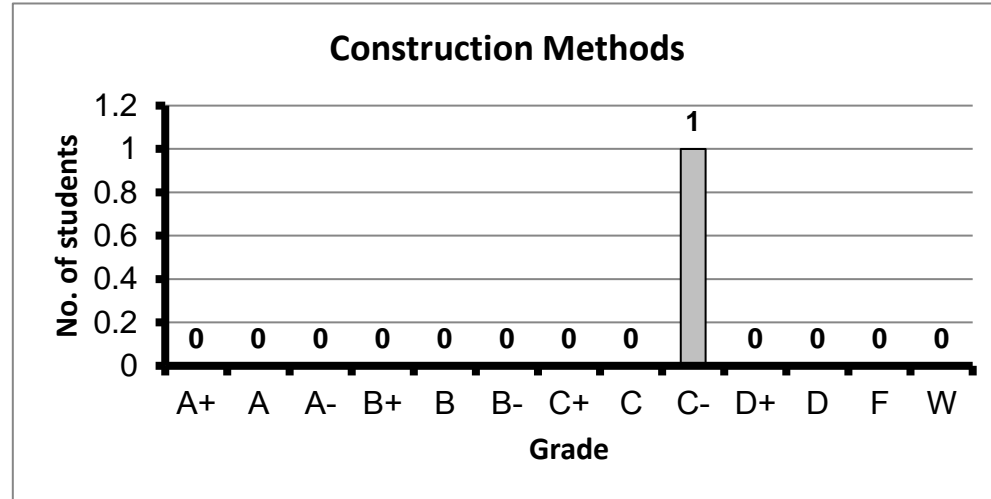
Course: Cost Engineering
Programs: CEM
Code: STRN422
Student: 72
A+ to C: 94%
C- to D: 6%
F: 0
W: 0
Average: 3.13
Std Dev: 0.60



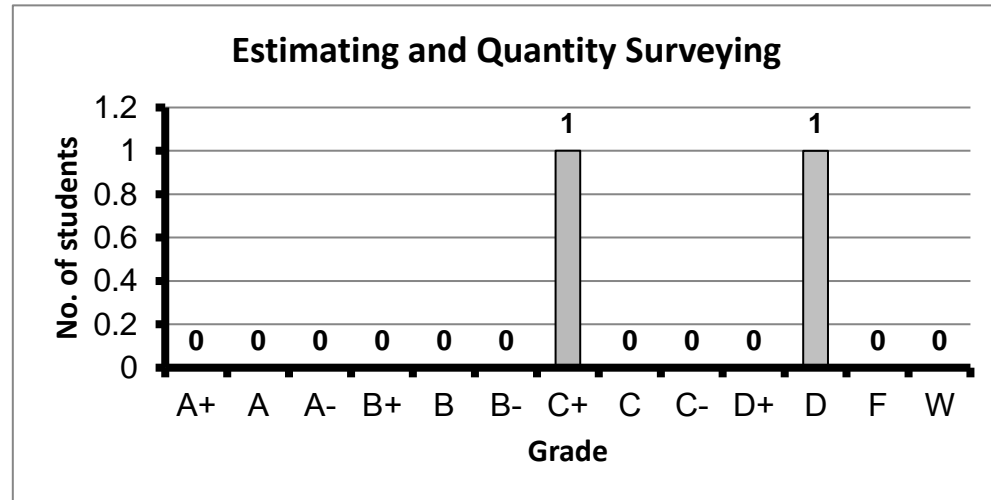
Course: Financial Management
Programs: CEM
Code: STRN423
Student: 54
A+ to C: 100%
C- to D: 0%
F: 0
W: 0
Average: 3.69
Std Dev: 0.46



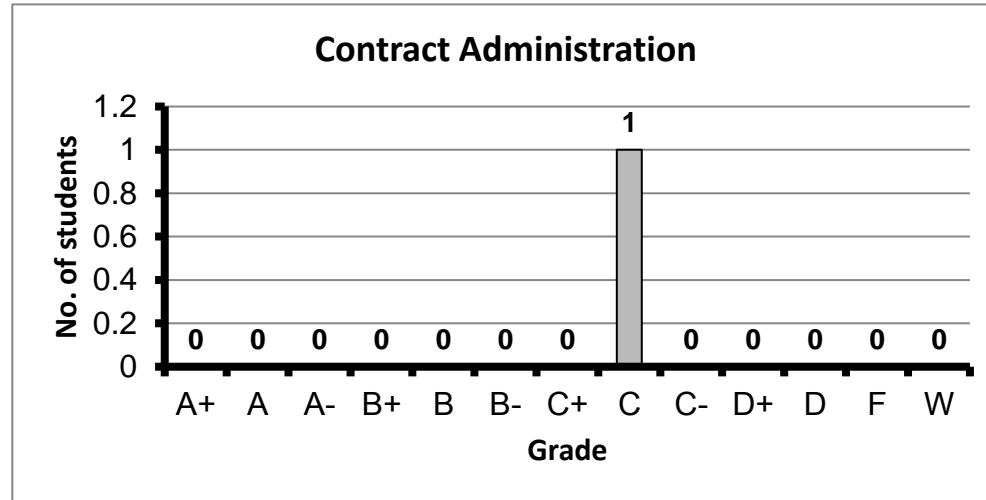
Course: Construction Methods
 Programs: CEM
 Code: STRN424
 Student: 1
 A+ to C: 0%
 C- to D: 100%
 F: 0
 W: 0
 Average: 1.70
 Std Dev: #DIV/0!



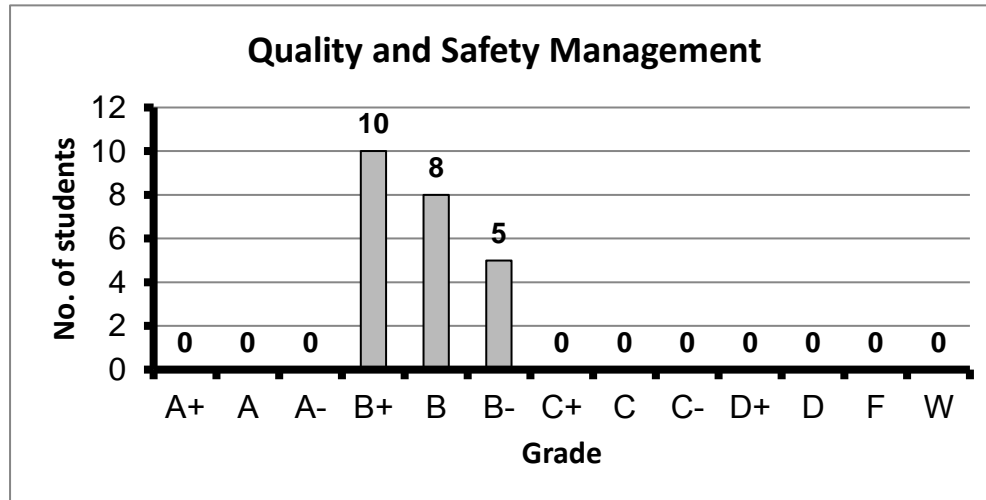
Course: Estimating and Quantity Surveying
 Programs: CEM
 Code: STRN426
 Student: 2
 A+ to C: 50%
 C- to D: 50%
 F: 0
 W: 0
 Average: 1.65
 Std Dev: 0.92



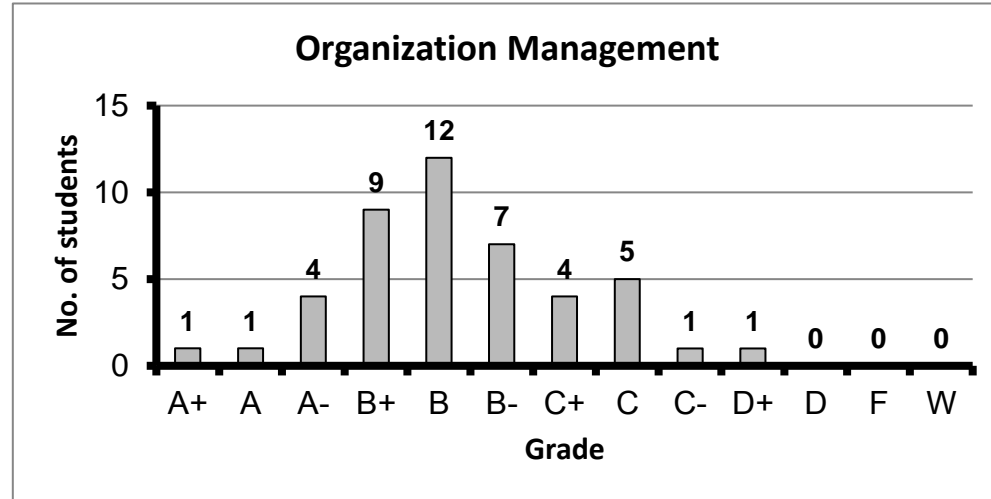
Course: Contract Administration
 Programs: CEM
 Code: STRN427
 Student: 1
 A+ to C: 100%
 C- to D: 0%
 F: 0
 W: 0
 Average: 2.00
 Std Dev: #DIV/0!



Course: Quality and Safety Management
 Programs: CEM
 Code: STRN448
 Student: 23
 A+ to C: 100%
 C- to D: 0%
 F: 0
 W: 0
 Average: 3.07
 Std Dev: 0.24



Course: Organization Management
 Programs: CEM
 Code: STRN449
 Student: 45
 A+ to C: 96%
 C- to D: 4%
 F: 0
 W: 0
 Average: 2.88
 Std Dev: 0.61



Course: Information Technology in Construction
 Programs: CEM
 Code: STRN452
 Student: 49
 A+ to C: 98%
 C- to D: 2%
 F: 0
 W: 0
 Average: 3.35
 Std Dev: 0.57

