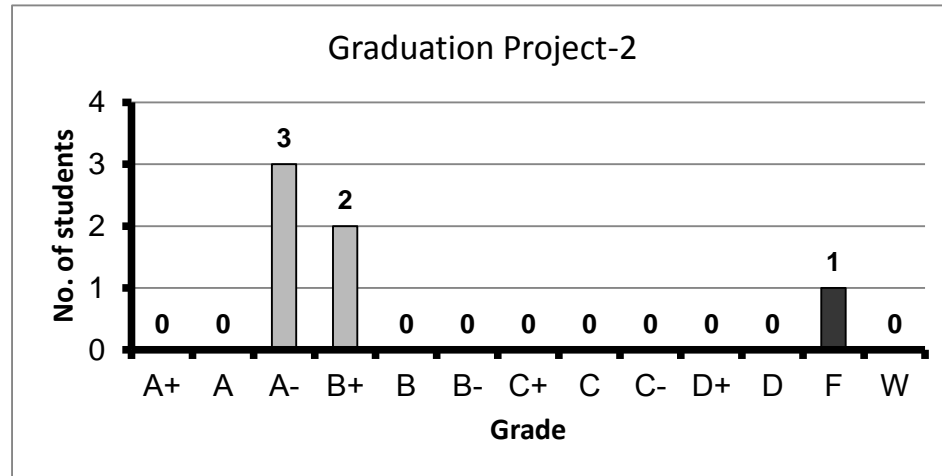
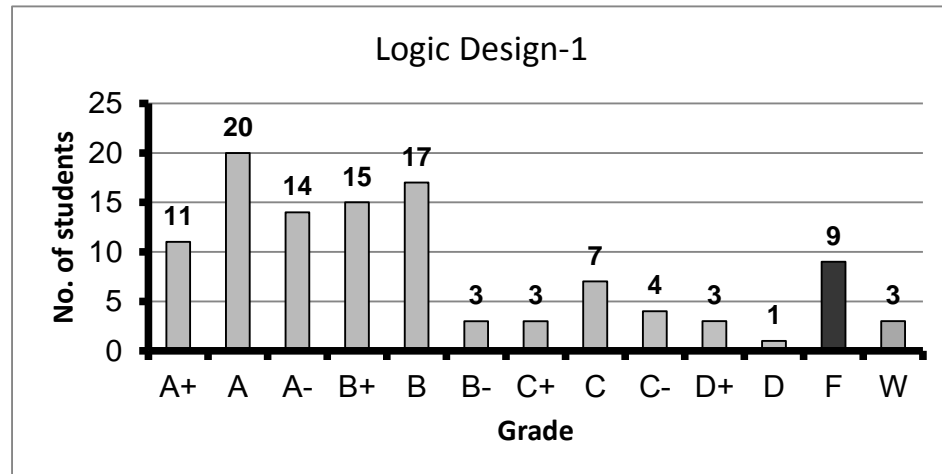


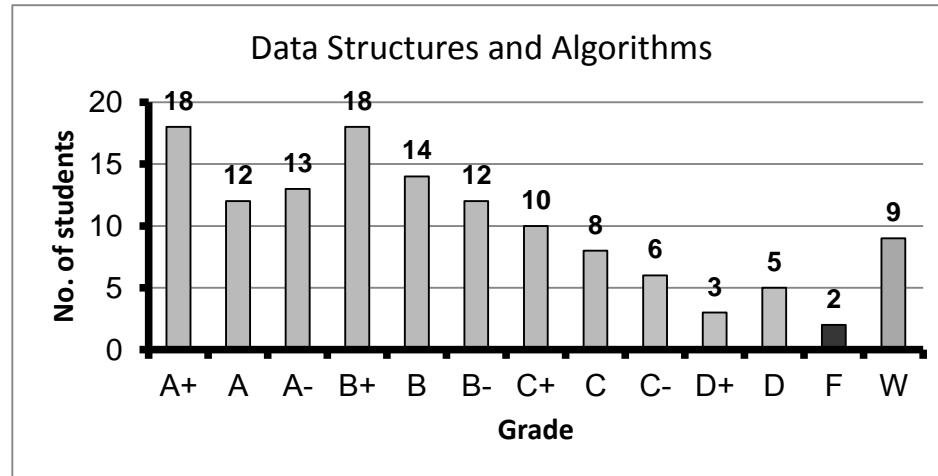
Course: Graduation Project-2  
 Programs: CCE  
 Code: CCEN481  
 Student: 6  
 A+ to C: 83%  
 C- to D: 0%  
 F: 1  
 W: 0  
 Average: 2.95  
 Std Dev: 1.46



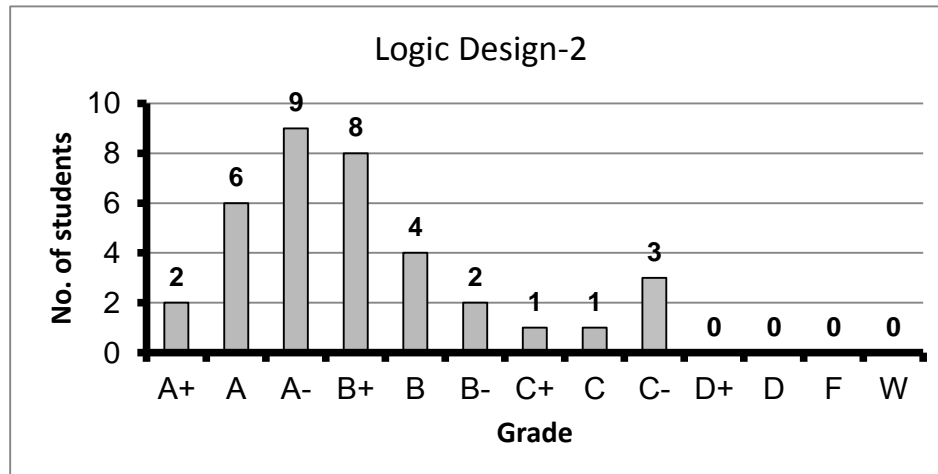
Course: Logic Design-1  
 Programs: CCE  
 Code: CMPN101  
 Student: 110  
 A+ to C: 84%  
 C- to D: 7%  
 F: 9  
 W: 3  
 Average: 2.97  
 Std Dev: 1.18



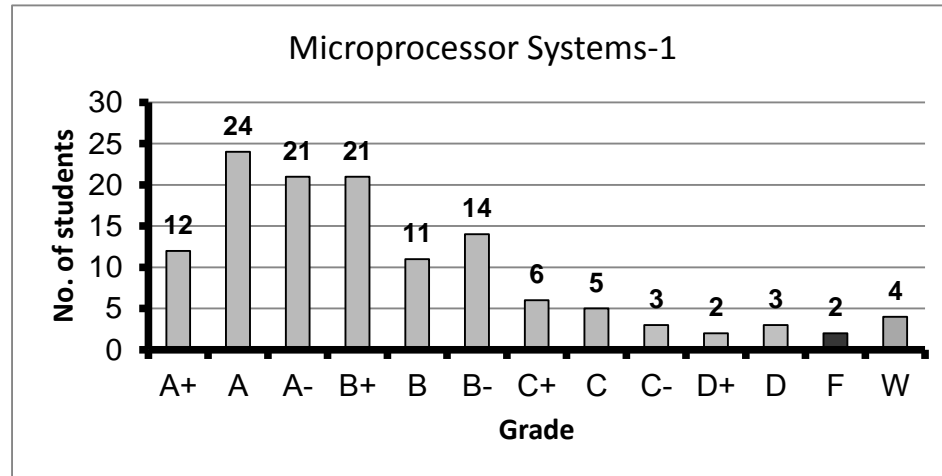
Course: Data Structures and Algorithms  
 Programs: CCE  
 Code: CMPN102  
 Student: 130  
 A+ to C: 87%  
 C- to D: 12%  
 F: 2  
 W: 9  
 Average: 2.98  
 Std Dev: 0.95



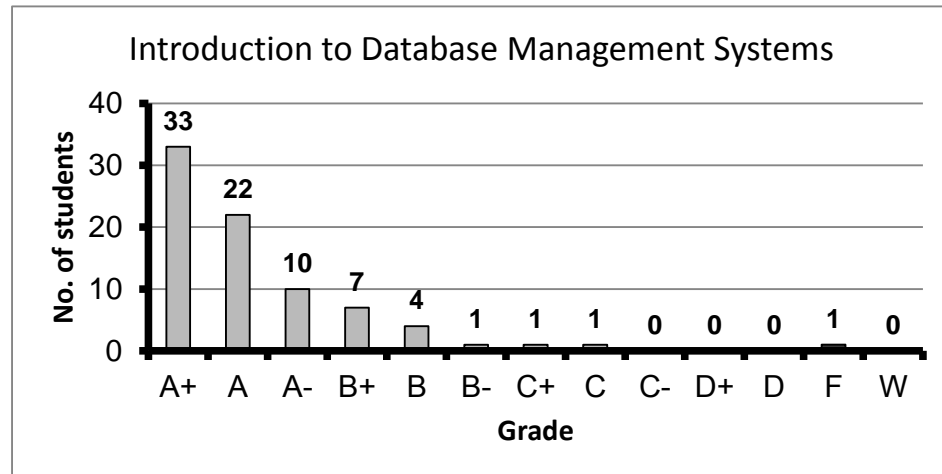
Course: Logic Design-2  
 Programs: CCE  
 Code: CMPN111  
 Student: 36  
 A+ to C: 92%  
 C- to D: 8%  
 F: 0  
 W: 0  
 Average: 3.29  
 Std Dev: 0.69



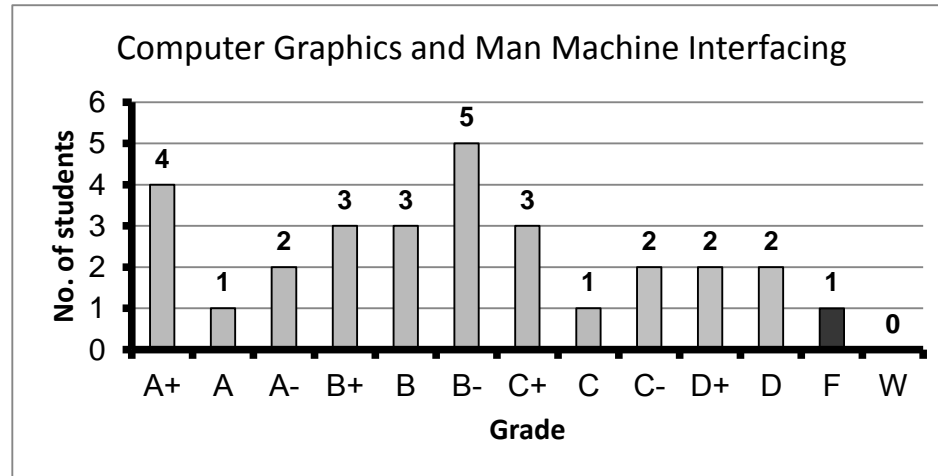
Course: Microprocessor Systems-1  
 Programs: CCE  
 Code: CMPN201  
 Student: 129  
 A+ to C: 92%  
 C- to D: 6%  
 F: 2  
 W: 4  
 Average: 3.20  
 Std Dev: 0.87



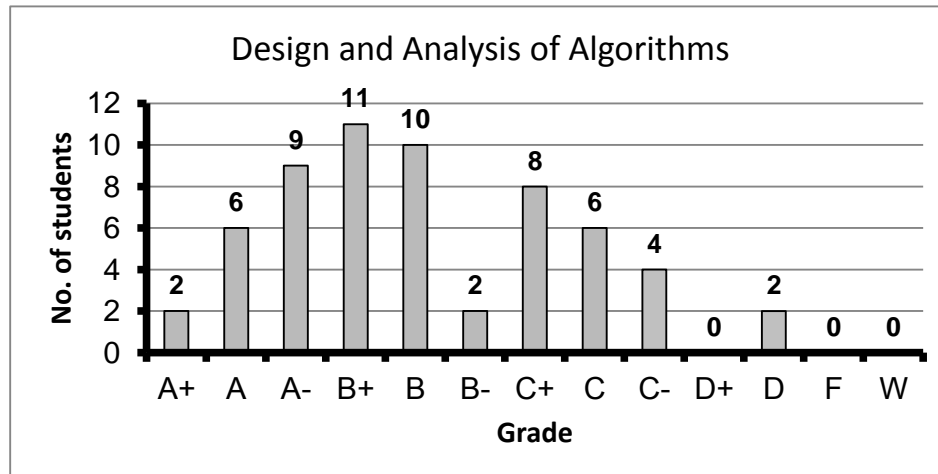
Course: Introduction to Database Management Systems  
 Programs: CCE  
 Code: CMPN202  
 Student: 80  
 A+ to C: 99%  
 C- to D: 0%  
 F: 1  
 W: 0  
 Average: 3.74  
 Std Dev: 0.59



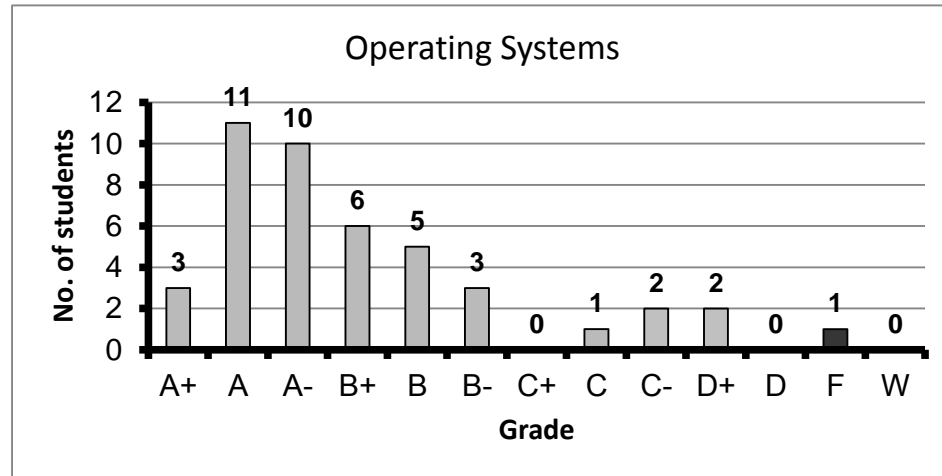
Course: Computer Graphics and Man Machine Interfacing  
 Programs: CCE  
 Code: CMPN205  
 Student: 29  
 A+ to C: 76%  
 C- to D: 21%  
 F: 1  
 W: 0  
 Average: 2.65  
 Std Dev: 1.06



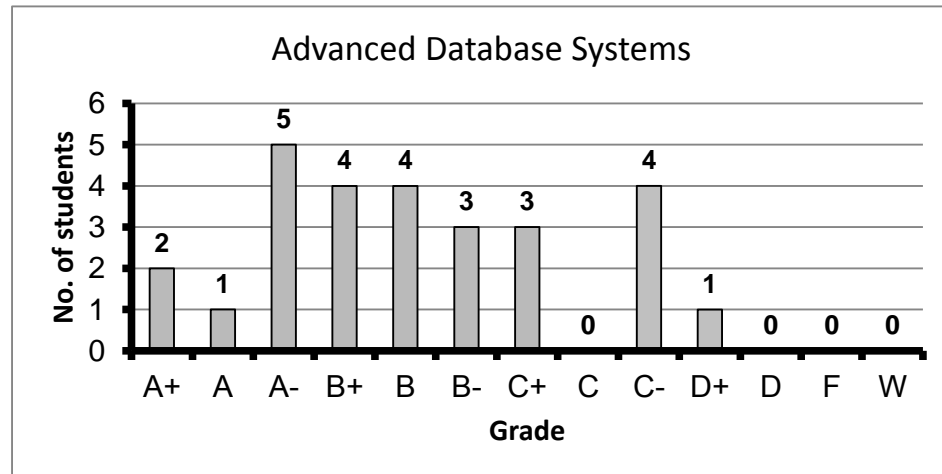
Course: Design and Analysis of Algorithms  
 Programs: CCE  
 Code: CMPN302  
 Student: 60  
 A+ to C: 90%  
 C- to D: 10%  
 F: 0  
 W: 0  
 Average: 2.94  
 Std Dev: 0.80



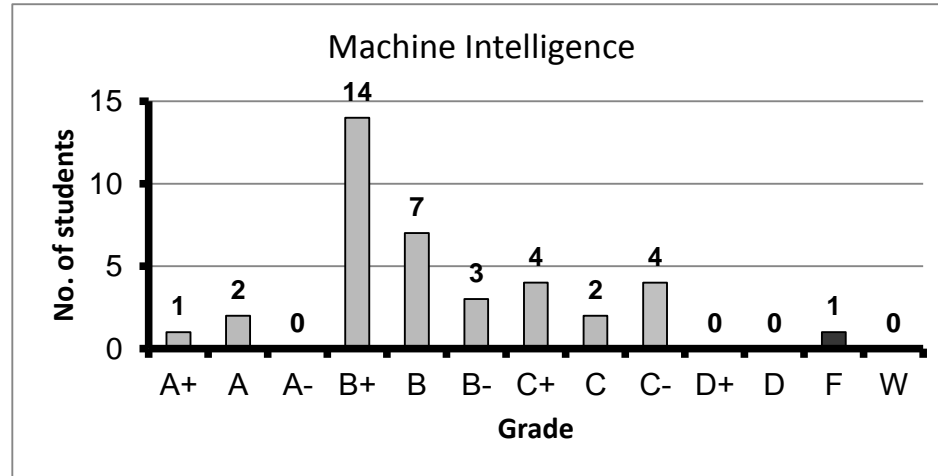
Course: Operating Systems  
 Programs: CCE  
 Code: CMPN303  
 Student: 44  
 A+ to C: 89%  
 C- to D: 9%  
 F: 1  
 W: 0  
 Average: 3.28  
 Std Dev: 0.91



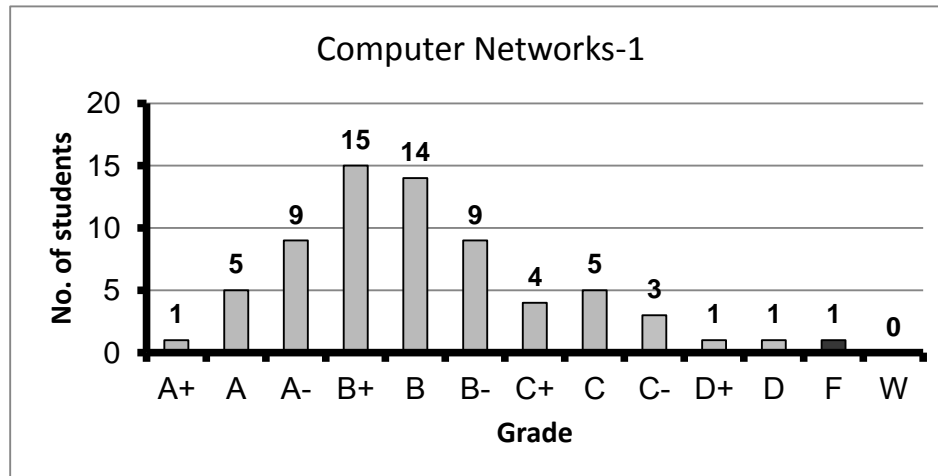
Course: Advanced Database Systems  
 Programs: CCE  
 Code: CMPN401  
 Student: 27  
 A+ to C: 81%  
 C- to D: 19%  
 F: 0  
 W: 0  
 Average: 2.92  
 Std Dev: 0.81



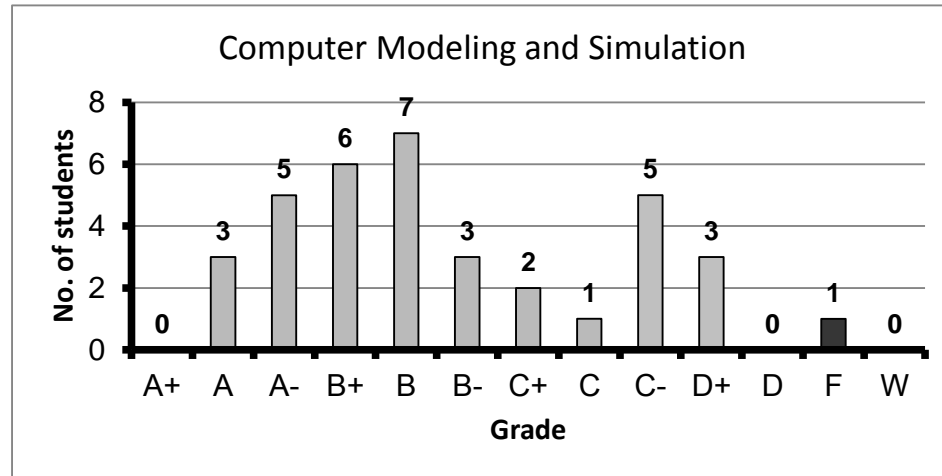
Course: Machine Intelligence  
 Programs: CCE  
 Code: CMPN402  
 Student: 38  
 A+ to C: 87%  
 C- to D: 11%  
 F: 1  
 W: 0  
 Average: 2.82  
 Std Dev: 0.79



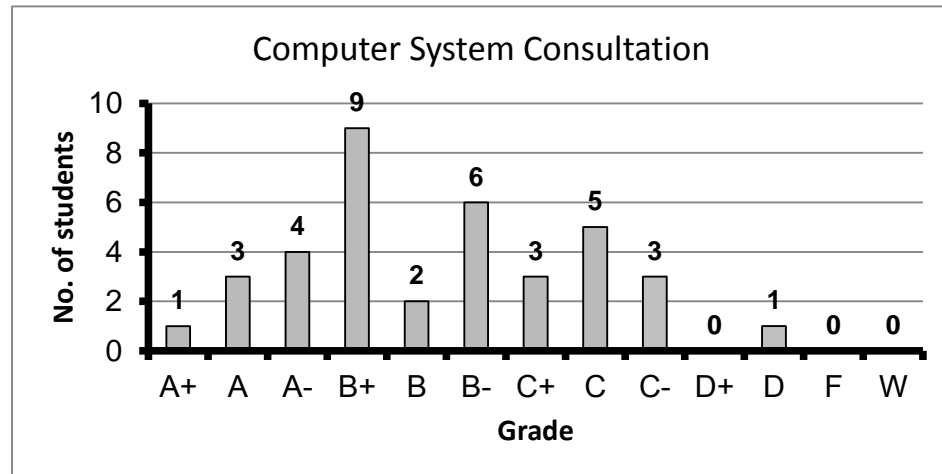
Course: Computer Networks-1  
 Programs: CCE  
 Code: CMPN405  
 Student: 68  
 A+ to C: 91%  
 C- to D: 7%  
 F: 1  
 W: 0  
 Average: 2.94  
 Std Dev: 0.77



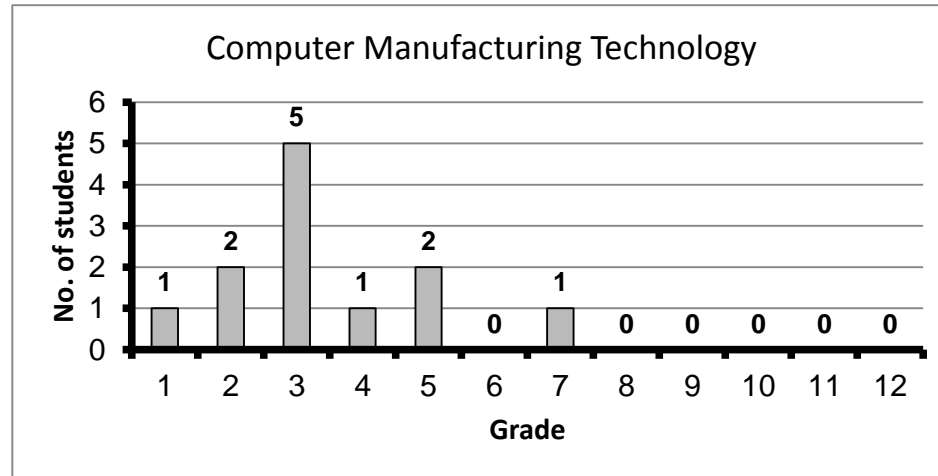
Course: Computer Modeling and Simulation  
 Programs: CCE  
 Code: CMPN407  
 Student: 36  
 A+ to C: 75%  
 C- to D: 22%  
 F: 1  
 W: 0  
 Average: 2.74  
 Std Dev: 0.95



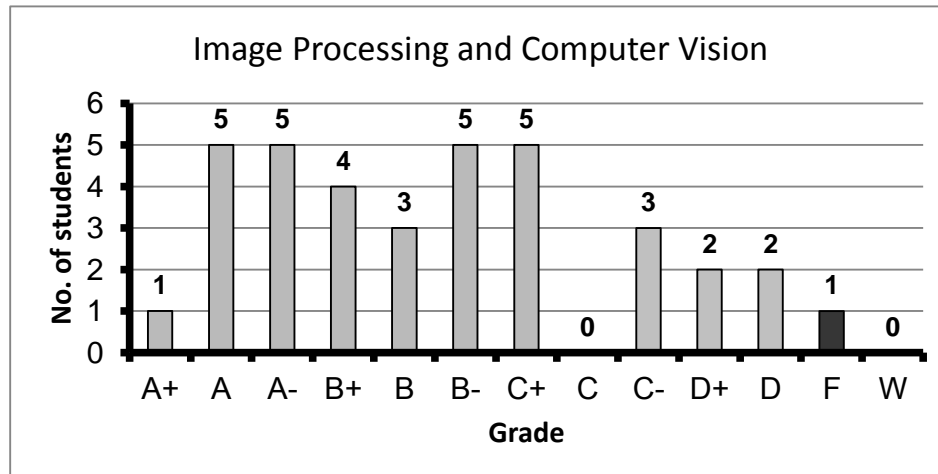
Course: Computer System Consultation  
 Programs: CCE  
 Code: CMPN425  
 Student: 37  
 A+ to C: 89%  
 C- to D: 11%  
 F: 0  
 W: 0  
 Average: 2.86  
 Std Dev: 0.78



Course: Computer Manufacturing Technology  
 Programs: CCE  
 Code: CMPN443  
 Student: 12  
 A+ to C: 100%  
 C- to D: 0%  
 F: 0  
 W: 0  
 Average: 3.19  
 Std Dev: 0.54

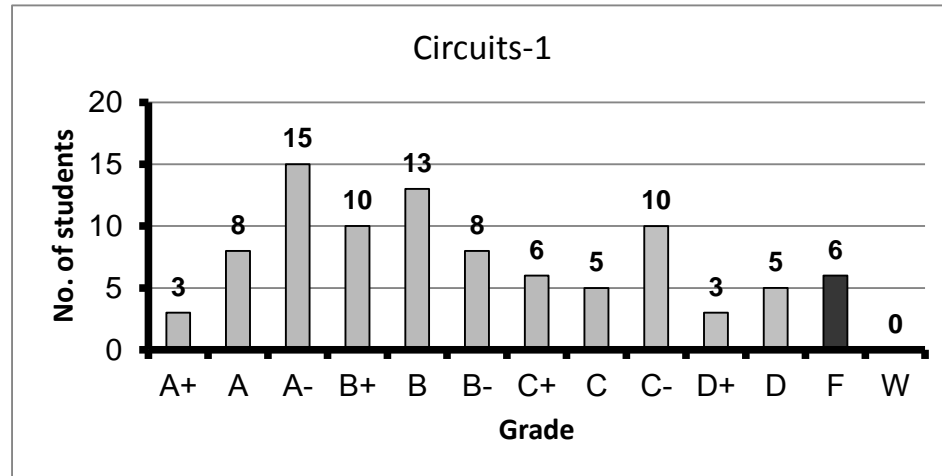


Course: Image Processing and Computer Vision  
 Programs: CCE  
 Code: CMPN446  
 Student: 36  
 A+ to C: 78%  
 C- to D: 19%  
 F: 1  
 W: 0  
 Average: 2.77  
 Std Dev: 1.04

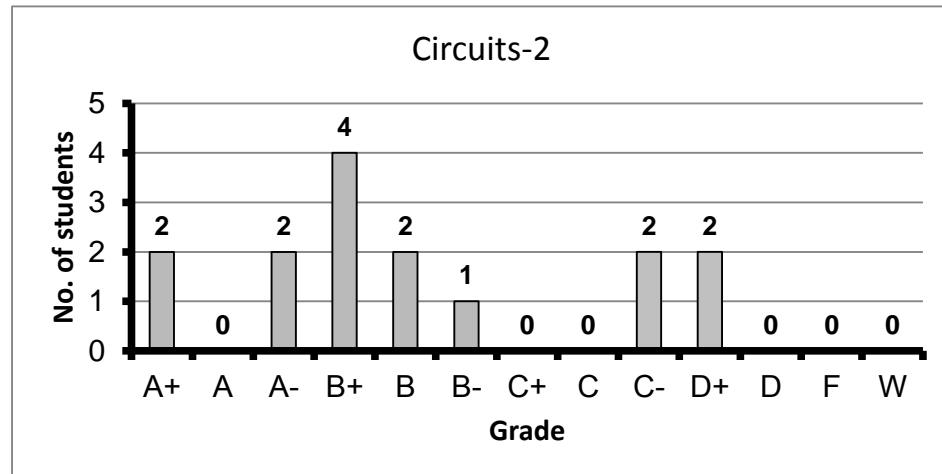




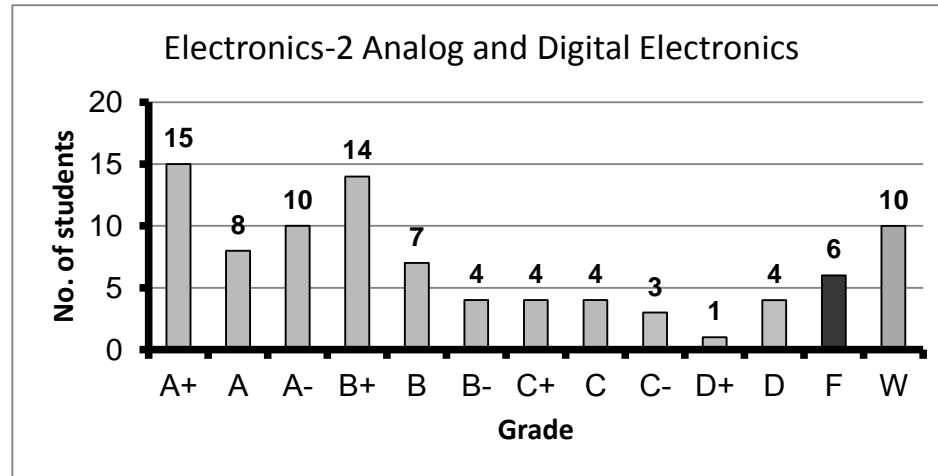
Course: Circuits-1  
 Programs: CCE  
 Code: ELCN102  
 Student: 92  
 A+ to C: 74%  
 C- to D: 20%  
 F: 6  
 W: 0  
 Average: 2.64  
 Std Dev: 1.13



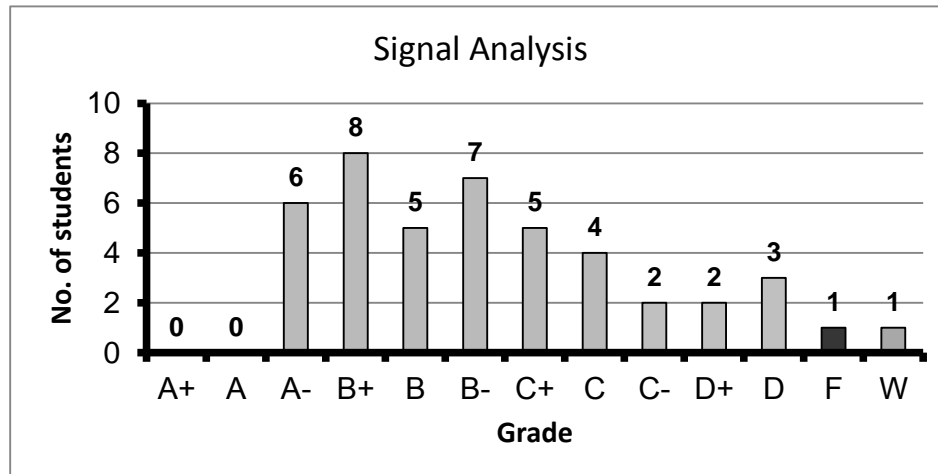
Course: Circuits-2  
 Programs: CCE  
 Code: ELCN112  
 Student: 15  
 A+ to C: 73%  
 C- to D: 27%  
 F: 0  
 W: 0  
 Average: 2.90  
 Std Dev: 0.94



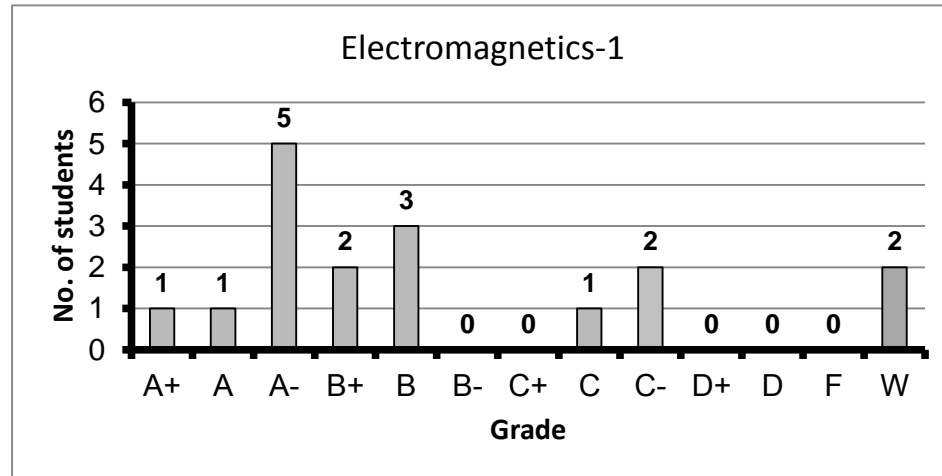
Course: Electronics-2 Analog and Digital Electronics  
 Programs: CCE  
 Code: ELCN201  
 Student: 90  
 A+ to C: 83%  
 C- to D: 10%  
 F: 6  
 W: 10  
 Average: 2.93  
 Std Dev: 1.20



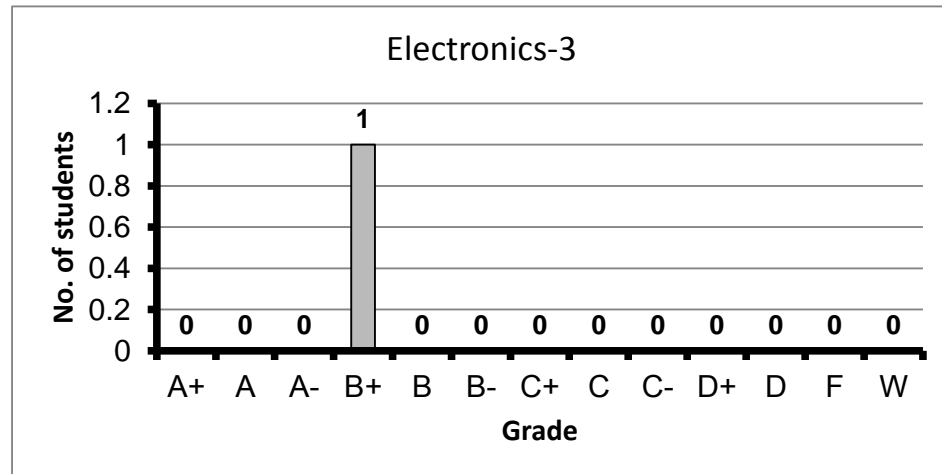
Course: Signal Analysis  
 Programs: CCE  
 Code: ELCN203  
 Student: 44  
 A+ to C: 81%  
 C- to D: 16%  
 F: 1  
 W: 1  
 Average: 2.59  
 Std Dev: 0.89



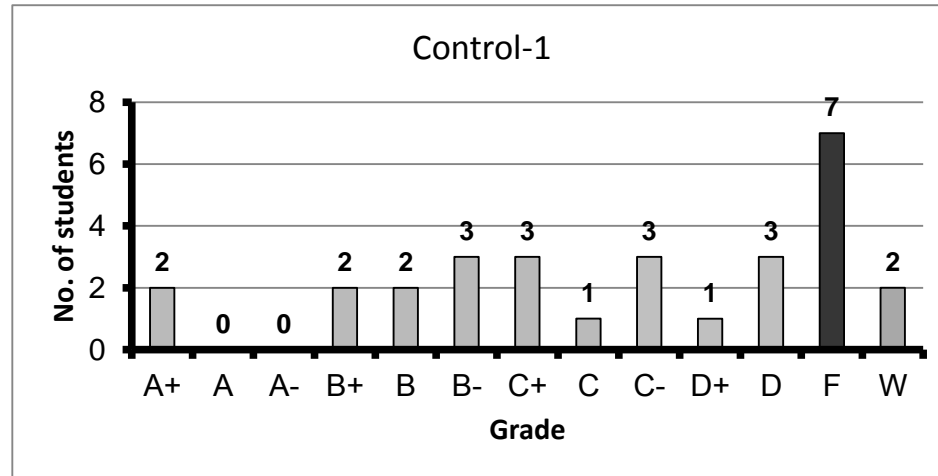
Course: Electromagnetics-1  
 Programs: CCE  
 Code: ELCN205  
 Student: 17  
 A+ to C: 87%  
 C- to D: 13%  
 F: 0  
 W: 2  
 Average: 3.17  
 Std Dev: 0.78



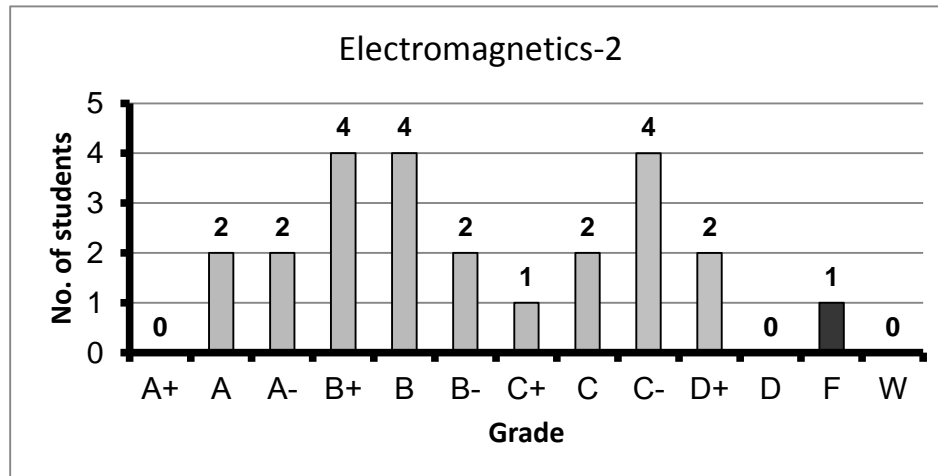
Course: Electronics-3  
 Programs: CCE  
 Code: ELCN301  
 Student: 1  
 A+ to C: 100%  
 C- to D: 0%  
 F: 0  
 W: 0  
 Average: 3.30  
 Std Dev: #DIV/0!



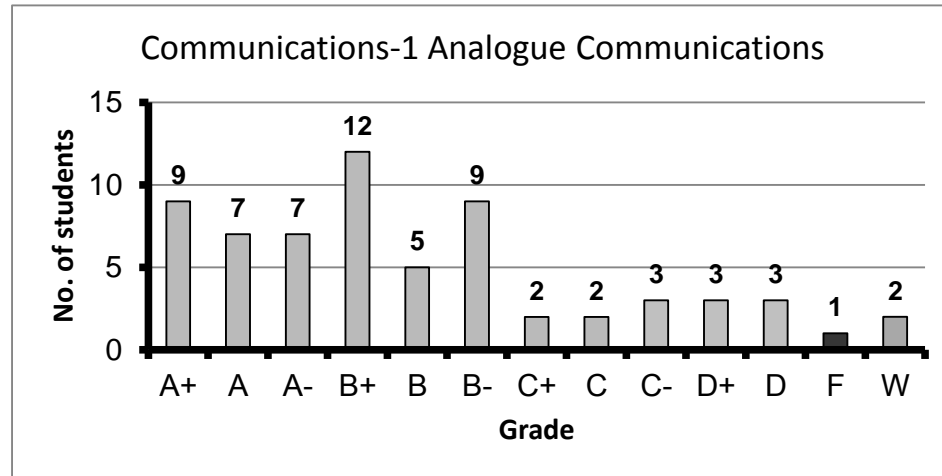
Course: Control-1  
 Programs: CCE  
 Code: ELCN304  
 Student: 29  
 A+ to C: 48%  
 C- to D: 26%  
 F: 7  
 W: 2  
 Average: 1.74  
 Std Dev: 1.32



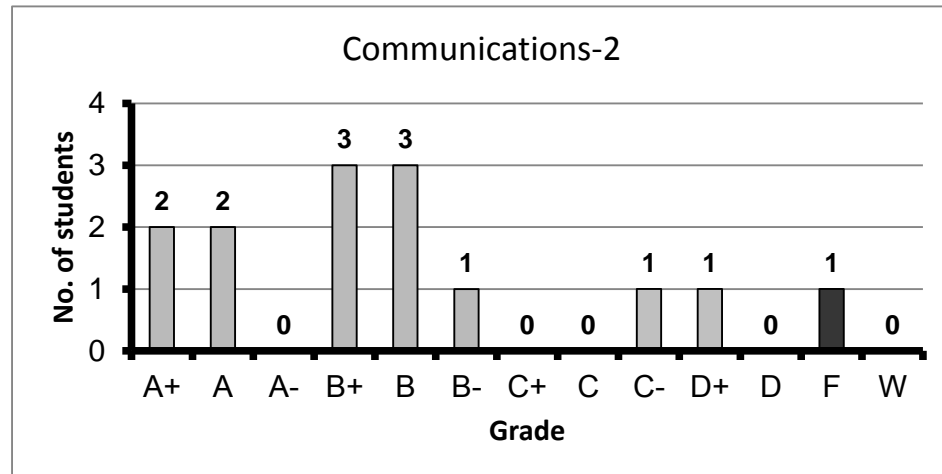
Course: Electromagnetics-2  
 Programs: CCE  
 Code: ELCN305  
 Student: 24  
 A+ to C: 71%  
 C- to D: 25%  
 F: 1  
 W: 0  
 Average: 2.58  
 Std Dev: 1.00



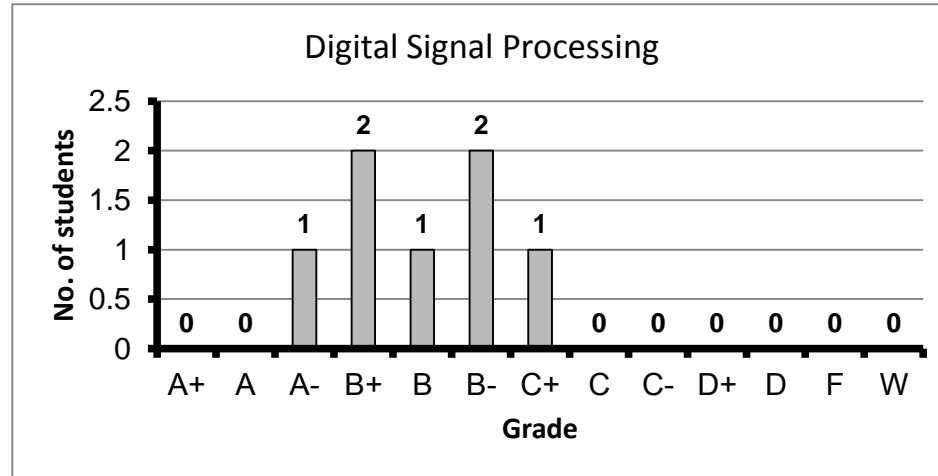
Course: Communications-1 Analogue Communications  
 Programs: CCE  
 Code: ELCN306  
 Student: 65  
 A+ to C: 84%  
 C- to D: 14%  
 F: 1  
 W: 2  
 Average: 3.01  
 Std Dev: 0.98



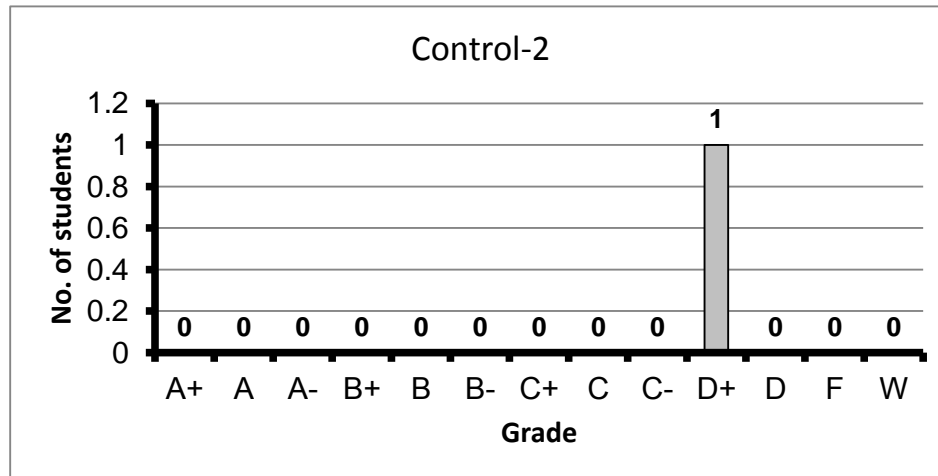
Course: Communications-2  
 Programs: CCE  
 Code: ELCN316  
 Student: 14  
 A+ to C: 79%  
 C- to D: 14%  
 F: 1  
 W: 0  
 Average: 2.91  
 Std Dev: 1.17



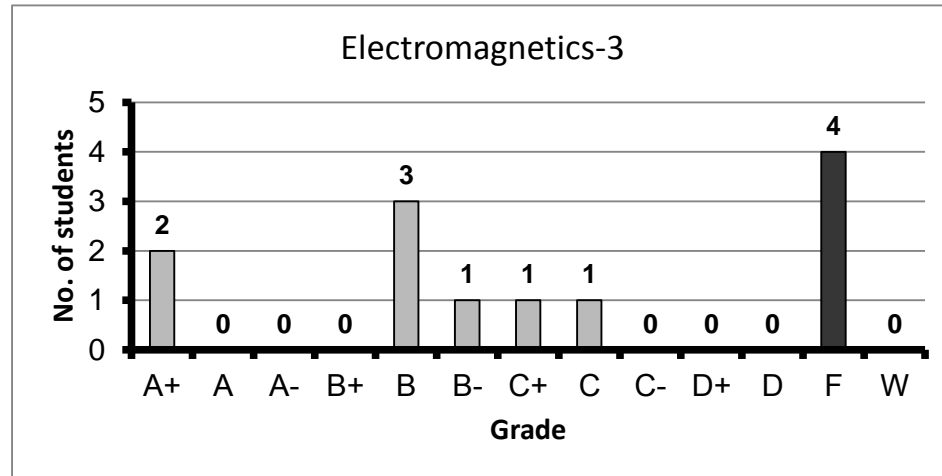
Course: Digital Signal Processing  
 Programs: CCE  
 Code: ELCN323  
 Student: 7  
 A+ to C: 100%  
 C- to D: 0%  
 F: 0  
 W: 0  
 Average: 3.00  
 Std Dev: 0.47



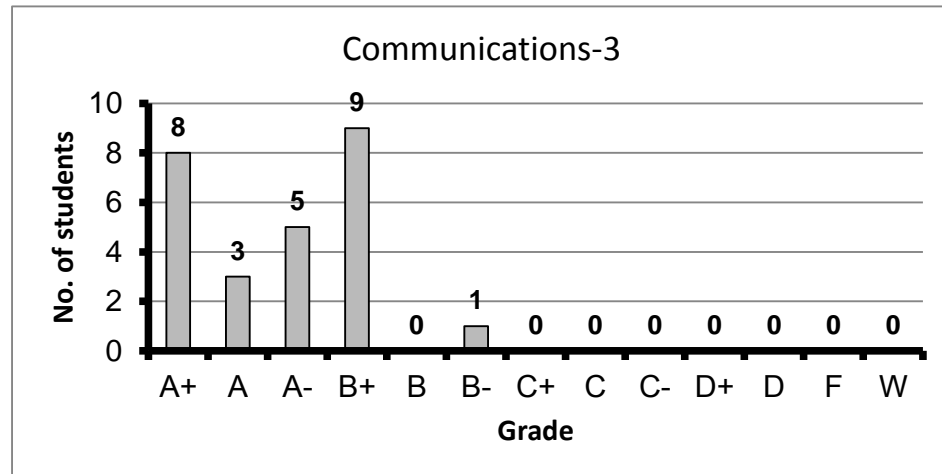
Course: Control-2  
 Programs: CCE  
 Code: ELCN404  
 Student: 1  
 A+ to C: 0%  
 C- to D: 100%  
 F: 0  
 W: 0  
 Average: 1.40  
 Std Dev: #DIV/0!



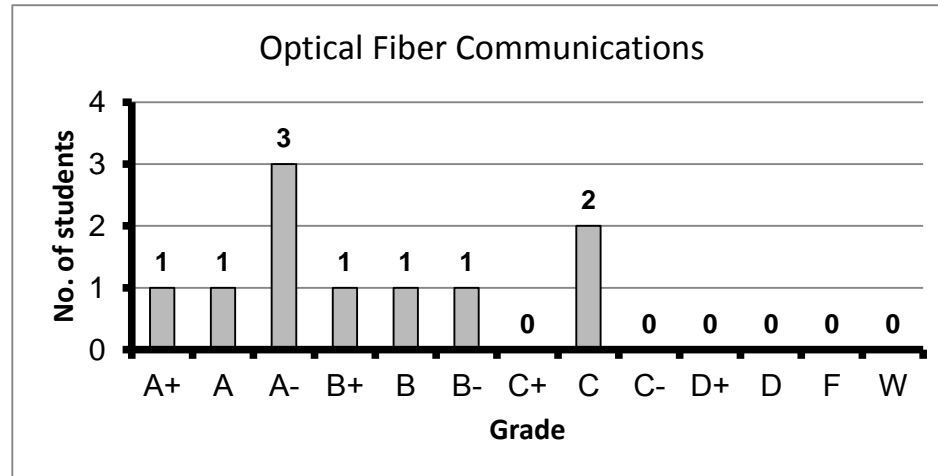
Course: Electromagnetics-3  
 Programs: CCE  
 Code: ELCN405  
 Student: 12  
 A+ to C: 67%  
 C- to D: 0%  
 F: 4  
 W: 0  
 Average: 2.00  
 Std Dev: 1.58



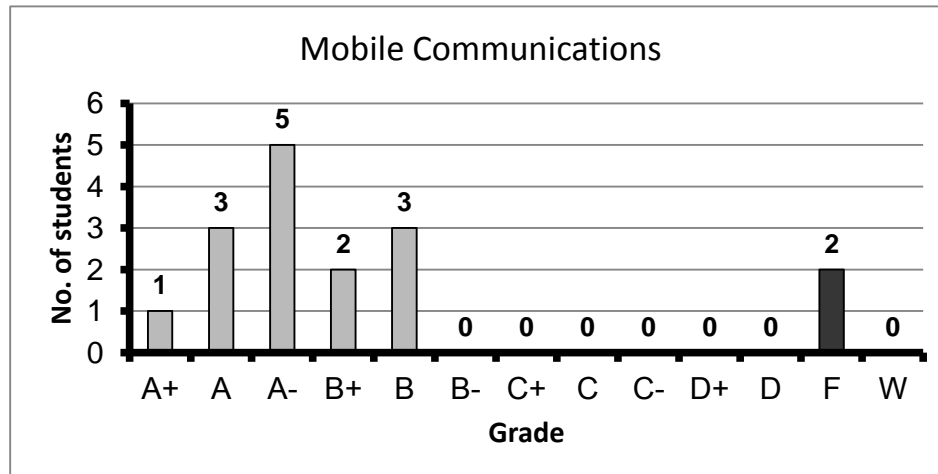
Course: Communications-3  
 Programs: CCE  
 Code: ELCN406  
 Student: 26  
 A+ to C: 100%  
 C- to D: 0%  
 F: 0  
 W: 0  
 Average: 3.65  
 Std Dev: 0.37



Course: Optical Fiber Communications  
 Programs: CCE  
 Code: ELCN426  
 Student: 10  
 A+ to C: 100%  
 C- to D: 0%  
 F: 0  
 W: 0  
 Average: 3.21  
 Std Dev: 0.76

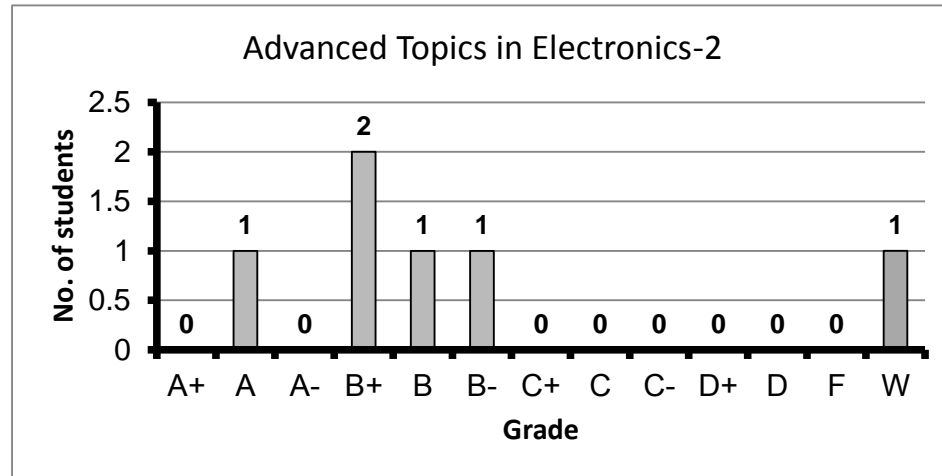


Course: Mobile Communications  
 Programs: CCE  
 Code: ELCN436  
 Student: 16  
 A+ to C: 88%  
 C- to D: 0%  
 F: 2  
 W: 0  
 Average: 3.13  
 Std Dev: 1.27

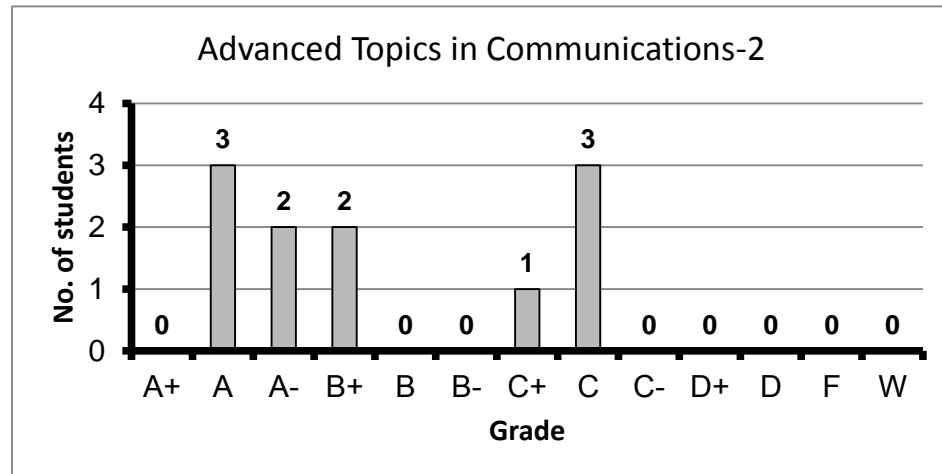




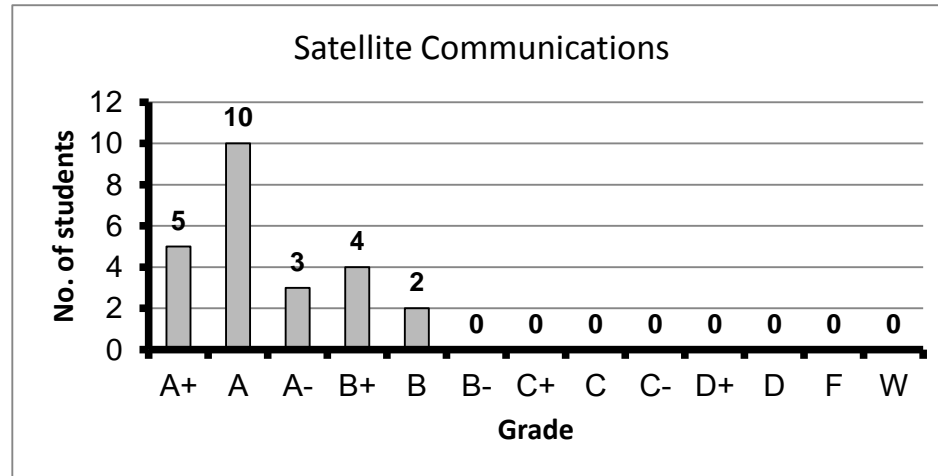
Course: Advanced Topics in Electronics-2  
 Programs: CCE  
 Code: ELCN441  
 Student: 6  
 A+ to C: 100%  
 C- to D: 0%  
 F: 0  
 W: 1  
 Average: 3.26  
 Std Dev: 0.48



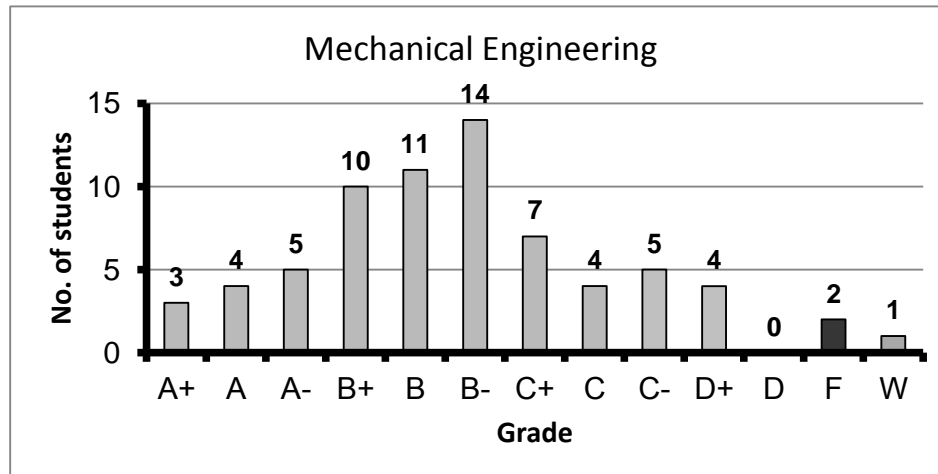
Course: Advanced Topics in Communications-2  
 Programs: CC  
 Code: ELCN456  
 Student: 11  
 A+ to C: 100%  
 C- to D: 0%  
 F: 0  
 W: 0  
 Average: 3.12  
 Std Dev: 0.87



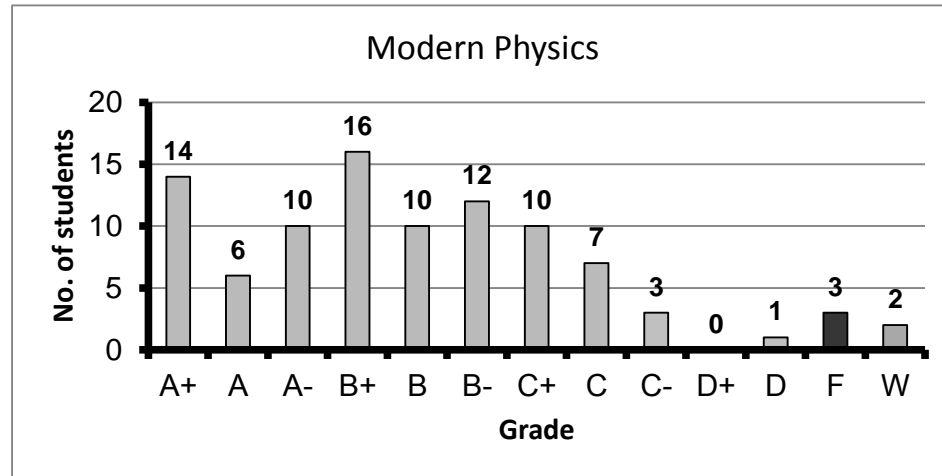
Course: Satellite Communications  
 Programs: CCE  
 Code: ELCN466  
 Student: 24  
 A+ to C: 100%  
 C- to D: 0%  
 F: 0  
 W: 0  
 Average: 3.76  
 Std Dev: 0.35



Course: Mechanical Engineering  
 Programs: CCE  
 Code: INTN125  
 Student: 71  
 A+ to C: 84%  
 C- to D: 13%  
 F: 2  
 W: 1  
 Average: 2.73  
 Std Dev: 0.87



Course: Modern Physics  
 Programs: CCE  
 Code: PHYN102  
 Student: 94  
 A+ to C: 92%  
 C- to D: 4%  
 F: 3  
 W: 2  
 Average: 2.99  
 Std Dev: 0.91



Course: Electromagnetic Fields  
 Programs: CC  
 Code: PHYN211  
 Student: 12  
 A+ to C: 64%  
 C- to D: 27%  
 F: 1  
 W: 1  
 Average: 2.13  
 Std Dev: 1.08

